

# TYRES MADE TO LAST



**TYRES WORTH OWNING**

[www.coopertires.com.au](http://www.coopertires.com.au)

1800 681 298

# COOPER TIRES® HISTORY

OVER 100 YEARS OF AMERICAN HISTORY

1914

The **Cooper** name has a proud and storied heritage that dates back more than 100 years to **1914**, when brothers-in-law John F. Schaefer and Claude E. Hart purchased M and M Manufacturing Company in Akron, which produced tyre patches and repair kits.

1917

The business purchased the Giant Tire & Rubber Company and moved to **Findlay, Ohio**, to manufacture rebuilt tyres.



1970

Terry's family started in the retail business in 1955 and by the 1970s. The business grew from making retreads and importing low-cost tyres to becoming the leading tyre retailer in the **ACT**.



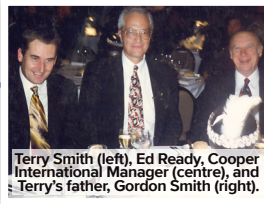
1989

Terry and Susanne secured the total **Australian distribution of Cooper Tires**.



1988

Terry travelled to the USA to find a brand that his family could import, offer through their retail stores, and call their own.



1989-2005

Terry & Susanne's retail store on **Ipswich Road, Moorooka** (owned from 1989 to 2005).

1993

In 1993, **Exclusive Tyre Distribution (ETD)** was established to separate the wholesale business.



2011

In 2011, **ETD expanded to New Zealand** with a head office and warehouse in Auckland, and distribution throughout the country.

















2015

Terry and Susanne renamed their holding company **National Tyre & Wheel (NTAW)**, with **ETD** as its first operating entity, and listed it as a public company in 2017.



Cooper's headquarters in Australia is located in **Hamilton, Queensland**, distributing top-quality tyres across both countries.



	<b>ULTIMATE MUD-TERRAIN</b> S/T PRO™	8	 4WD
	<b>EXTREME ALL-TERRAIN</b> S/T MAXX™	10	
	<b>BEST 4WD TYRE EVER MADE</b> RUGGED TREK®	12	
	<b>HEAVY DUTY ALL-TERRAIN</b> STRONGHOLD® AT	14	
	<b>HIGHEST MILEAGE ALL-TERRAIN</b> AT3 4S™ / AT3 LT™ / AT3 XLT™	16	 SUV
	<b>MOST VERSATILE SUV TYRE</b> ROAD+TRAIL® AT	18	
	<b>SPORTS ALL-TERRAIN</b> LTZ PRO®	20	
	<b>LIFESTYLE SUV</b> ATT®	22	
	<b>ULTIMATE GRIP &amp; MILEAGE TYRE</b> PROCONTROL®	24	 CAR
	<b>BEST VALUE SUV</b> CTT®	26	
	<b>BEST VALUE CAR</b> C5®	28	

CAR

TODAY





TYRES WORTH OWNING

# MILEAGE WARRANTY

Register your Mileage Warranty online



AUSTRALIA WIDE  
**GUARANTEED**  
— TO LAST UP TO —  
**80,000KM**

**6** YEAR  
MANUFACTURER'S  
WARRANTY

**LIFETIME**  
— BUILT TO LAST —  
WARRANTY



## The Cooper Tires® Commitment

### Here's what you need to know about the Mileage Warranty

#### How it works

Cooper Tires® Mileage Warranty is available nationally. Cooper® tyres are guaranteed to last from 50,000-80,000 kms depending on tyre size, tread pattern and subject to your local conditions. Your Cooper Tires® Authorised Stockist has the right to refuse or vary the mileage warranty at their discretion based on the road conditions and geographic influences encountered in your local area or the intended use of the tyres.

The Mileage Warranty is a pro-rata warranty. The amount covered will be determined by multiplying the original purchase price by the percentage of the kilometre shortfall. The kilometre shortfall is the difference between the kilometres guaranteed and the kilometres achieved. You are responsible for all costs associated with making a claim under this warranty including the cost of mounting, balancing and any additional charges or your acceptance of a higher priced replacement tyre.

The mileage warranty does not cover

tyres purchased for vehicles for commercial use (Taxi or Hire Vehicles).

#### To keep your warranty

The regular care and maintenance of your wheel alignment, brakes, suspension and wheels are crucial to the performance and wear of your tyres. For this reason, you must return your vehicle to an Authorised Cooper® Stockist each 10,000 kms for an inspection of these items. During each 10,000 km inspection, the Authorised Cooper® Stockist will perform a free diagnosis to establish whether a tyre service is required. If a tyre service is not required, the retailer will sign your service card at no cost. If a tyre service is

required, a wheel alignment, wheel balance and a routine check will be undertaken on all mechanical parts relevant to the wear and performance of your tyres.

#### To claim

To claim under this Mileage Warranty, you must have proof of purchase and contact a Cooper Tires® Authorised Stockist. To find your nearest Authorised Stockist visit [www.coopertires.com.au/](http://www.coopertires.com.au/) find-a-retailer. For any further questions or dispute resolution, contact the Cooper Tires® team on **1300 COOPER (266 737)**.

For more information regarding Cooper Tires® Mileage Warranty, please visit [coopertires.com.au](http://coopertires.com.au).

# 7 REASONS WHY YOU SHOULD CHOOSE

# COOPER TYRES



# 1

COOPER TYRES ARE MADE TO LAST



# 2

COOPER TYRES HAVE DEEPER TRENDS



# 3

COOPER TYRES ARE TRUSTED AUSTRALIA WIDE



# 4

COOPER TYRES FEATURE THE LARGEST RANGE, LATEST TECHNOLOGY



# 5

COOPER TYRES HAVE THE LATEST TREAD DESIGN, FEATURING FULL DEPTH SIPES



# 6

COOPER TYRES HAVE HIGH QUALITY CARCASS CONSTRUCTION THAT ARE STRONGER



# 7

COOPER TYRES SUPERIOR COMPOUND IMPROVES GRIP WITHOUT SACRIFICING MILEAGE



**MORE TREAD,  
MORE MILES,  
MORE VALUE  
FOR MONEY.**

**GUARANTEED UP TO 80,000 KM**

ON-ROAD. OFF-ROAD. AUSTRALIA WIDE



# ULTIMATE MUD-TERRAIN

## STT PRO™

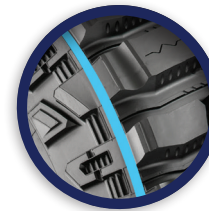
# WANT THE MOST ADVANCED EXTREME OFF-ROAD TYRE?



20% Road & Sand 80% Dirt & Mud

	Tyre Size	Ply Rating	OD (mm)	Load/ Speed Index	Tread Depth (mm)
15	32X11.50R15	6	811	113Q	15.8
	33X12.50R15	6	841	108Q	16.6
	35X12.50R15	6	888	113Q	16.6
16	305/70R16	10	848	124/121Q	15.4
	245/75R16	10	789	120/116Q	14.3
	265/75R16	10	820	123/120Q	14.8
	285/75R16	10	848	126/123Q	15.1
	235/85R16	10	820	120/116Q	14.3
17	265/70R17	10	821	121/118Q	14.8
	285/70R17	10	839	121Q	15.2
	315/70R17	10	888	121/118Q	16.6
18	305/60R18	12	820	126Q	16.6
	275/65R18	10	830	123/120Q	15.1
	285/65R18	10	846	125/122Q	15.1
20	35X12.50R20	10	892	121Q	16.6
	305/55R20	10	851	121Q	16.4

The STT PRO™ is the most advanced extreme off-road tyre Cooper Tires® offers, providing remarkable off-road performance without sacrificing on-road traction. Tested in the tough Australian Outback.



### SMOOTHER RIDE, INCREASED TRACTION

Flex groove technology

### SAFER IN THE WET

Cooper's advanced silica compound allows for Micro Gauge (thinner) sipes to strengthen and grip better while reducing stone damage.

### GRIP THROUGH MUD

With additional air pockets that continuously clear thick mud from the tire.

### DAMAGE PREVENTION FOR LONGER LIFE

Stone Barriers help dislodge stones for less chance of damage.



### 3 PLY ARMOR-TEK SIDEWALL

3 ply sidewall with an 8 degree off set, increasing damage resistance

### ULTIMATE SIDEWALL PROTECTION

Armor-Tek<sup>3</sup> Angle Ply

### CHEMICALLY COUPLED SILICA

Improves wet traction

### ULTIMATE WET GRIP ON-ROAD, LESS TREAD DAMAGE OFF-ROAD

Coupled Silica Compound

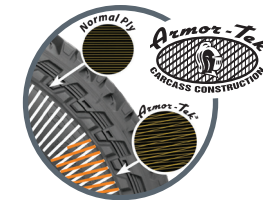
### 1. TREAD



### NO. 1 OFF-ROAD TRACTION

Flex Grooves, Mud Scoops & Stone Ejectors Ribs ensure flexibility while maintaining strength and clear tread to grip the terrain.

### 2. CARCASS



### 2.5X MORE DAMAGE RESISTANCE

Armor-Tek<sup>3</sup> Protective Ply with Angle Ply Technology uses two 90° radial plies and a third at 8°, delivering 50% more impact protection, 2.5x more tear resistance, and enhanced stability—even at lower pressures.

### 3. COMPOUND



### 3-4 TIMES IMPROVED STOPPING

Chemically coupled silica helps reduce cutting and chipping off road while improving wet grip on-road.

# EXTREME ALL-TERRAIN

## S/T MAXX™

# AUSTRALIA'S TYRE OF CHOICE



50% Road & Sand

50% Dirt & Mud

	Tyre Size	Ply Rating	OD (mm)	Load/Speed Index	Tread Depth (mm)	Mileage Warranty (kms)*
16	265/70R16	10	793	121/118Q	14.7	80,000
	225/75R16	10	758	115/112Q	14.7	60,000
	245/75R16	10	788	120/116Q	14.7	60,000
	265/75R16	10	823	123/120Q	14.7	80,000
	285/75R16	10	846	126/123Q	14.7	80,000
	235/85R16	10	822	120/116Q	14.7	60,000
17	255/85R16	10	843	123/120Q	14.7	80,000
	265/65R17	10	775	120Q	14.7	80,000
	245/70R17	10	789	119/116Q	14.7	80,000
	265/70R17	10	809	121/118Q	14.7	80,000
	275/70R17	10	827	121/118Q	14.7	80,000
	285/70R17	10	848	121/118Q	14.7	80,000
18	265/60R18	10	790	119/116Q	14.7	80,000
	265/65R18	10	818	122/119Q	14.7	80,000
	275/65R18	10	828	123/120Q	14.7	70,000
	285/65R18	10	843	125/122Q	14.7	70,000
	275/70R18	10	858	125/122Q	14.7	70,000

The S/T MAXX™ is one of our toughest, most damage resistant radial 4x4 tyres. A hybrid between an all-terrain and a mud-terrain with unique construction for maximum strength and damage resistance.



**IMPROVED SIDEWALL PROTECTION**  
Rugged shoulder protection

**SAFER IN THE WET**  
Cooper's advanced silica compound allows for Micro Gauge (thinner) sipes to strengthen and grip better while reducing stone damage.

**DAMAGE PREVENTION FOR LONGER LIFE**  
Stone barriers

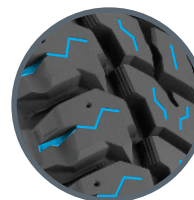
**IMPROVED WET TRACTION**  
Chemically coupled silica, improving wet grip traction.

**ULTIMATE WET GRIP ON-ROAD, LESS TREAD DAMAGE OFF-ROAD**  
Coupled Silica Compound

**ARMOR TEK - 3 PLY SIDEWALL**  
3 ply sidewall for protection against punctures.

**ULTIMATE SIDEWALL PROTECTION**  
Armor-Tek<sup>3</sup> Angle Ply

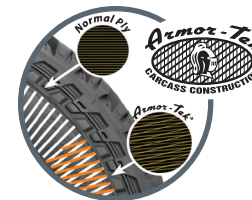
### 1. TREAD



**TRACTION IN ALL CONDITIONS**

**Micro-Gauge Sipes** reduce cutting and chipping whilst improving traction in the wet, giving you enhanced stability and longevity.

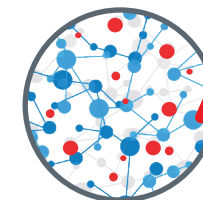
### 2. CARCASS



**2.5X LESS PUNCTURES**

**Armor-Tek3 Protective Ply** with **Angle Ply Technology** uses two 90° radial plies and a third at 8°, delivering 50% more impact protection, 2.5x more tear resistance, and enhanced stability—even at lower pressures.

### 3. COMPOUND



**NEW COMPOUND BUILT FOR AUSTRALIAN CONDITIONS**

**New and Improved** chemically-coupled silica compound engineered for Australian condition.

# COOPER'S BEST 4WD TYRE EVER MADE

# WANT THE BEST ALL-ROUND 4WD TYRE?

RUGGED TREK®



60% Road & Sand 40% Dirt & Mud

	Tyre Size	Ply Rating	OD (mm)	Load/ Speed Index	Tread Depth (mm)	Mileage Wty (km)*
16	245/70R16	10	756	118/115Q	14.7	70,000
	265/70R16	10	784	121/118Q	14.7	80,000
	265/75R16	10	810	123/120Q	14.7	80,000
17	265/65R17	10	782	120/117Q	14.7	80,000
	265/70R17	10	810	121/118Q	14.7	80,000
	285/70R17	10	849	121/118Q	14	80,000
18	265/60R18	10	790	119/116Q	14.7	80,000
	275/65R18	10	782	123/120Q	14	80,000
	275/70R18	10	811	125/122Q	14	80,000
20	35X12.50R20	12	897	125Q	14	80,000
	285/55R20	10	842	122/119Q	14	80,000
	305/55R20	12	859	125/122Q	14	80,000
	275/65R20	10	891	126/123Q	14	80,000

The Rugged Trek® is a stronger two ply tyre built to handle on and off-road. It has a unique rough terrain pattern to handle off-road tracks but also performs well on-road with low tyre noise and enhanced wet grip.



\*Mileage warranty. Terms and conditions apply. XL = Extra load

	Tyre Size	UTQG wear / traction	OD (mm)	Load / Speed Index	Tread Depth (mm)	Mileage Wty (km)*
18	265/60R18 XL	600 A B	790	114T	13	70,000
	265/65R18 XL	600 A B	811	116T	13	70,000
20	265/50R20 XL	600 A B	782	111T	13	70,000
	275/55R20 XL	600 A B	827	117T	13	70,000
	275/60R20	600 A B	858	115T	13	70,000

**COMPOUND FORMULA**  
Advanced Silica Compound provides excellent wet traction and durability.

**EARTH DIGGERS™**  
Large shoulder scoops and lugs that forcefully dig into dirt and mud for enhanced traction.

**HIGH TENSILE BODY PLY**  
20% stronger sidewalls provide enhanced resistance to impact damage while maintaining a comfortable ride. Delivers the strength of a 3-ply with the comfort of a 2-ply ride.

**ADAPTIVE SIDEWALL**  
Provides a strong assertive look. Improved soft surface traction and increased sidewall protection with two distinctive designs: Knife Edge and Mountain Pass.

**STONE BLOCKADES**  
Jutting ridges that dislodge debris and protect the tyre from damage and move traction.

**STABLE TRAC™ TECHNOLOGY**  
Stable Trac™ Technology with omni-directional, micro gauge siping enhances grip on wet roads and less tread damage.

**1. TREAD**



**63% DEEPER TREAD**

Up to 63% Deeper Treads than some competitor tyres, with a whopping 14.7mm tread depth.

**2. CARCASS**



**HIGH TENSILE BODY PLY**

20% stronger than most other brands, giving you enhanced resistance to impact damage when driving off-road.

**3. COMPOUND**



**COMPOUND FORMULA**

30% Chemically Coupled Silica, increasing wet grip performance.

# HEAVY DUTY ALL-TERRAIN STRONGHOLD® AT

## WANT DURABILITY & HIGH MILEAGE?



70% Road & Sand

30% Dirt & Mud

	Tyre Size	Ply Rating	OD (mm)	Load/ Speed Index	Tread Depth (mm)	Mileage Wty (kms)*
16	245/75R16	10	774	120/116S	14.3	80,000
	265/75R16	10	804	123/120S	12.7	80,000
	285/75R16	10	834	126/123R	12.7	80,000
	235/85R16	10	806	120/116R	13.5	80,000
17	245/70R17	10	782	119/116R	13.5	80,000
	265/70R17	10	804	123/120R	13.5	80,000
	285/70R17	10	832	126/123S	13.5	80,000
	315/70R17	10	874	126/123S	13.5	80,000
18	265/60R18	10	775	119/116S	13.5	80,000
	265/65R18	10	801	122/119T	13.5	80,000
	275/65R18	10	815	123/120S	13.5	80,000
	265/70R18	10	843	124/121S	12.7	80,000
	275/70R18	10	843	125/122S	13.5	80,000
20	295/70R18	10	871	129/126S	13.5	80,000
	35X12.50R20	10	877	125R	13.5	80,000
	275/55R20	10	810	120/117S	13.5	80,000
	265/60R20	10	826	121/118S	13.5	80,000
	275/60R20	10	838	123/120S	13.5	80,000
	275/65R20	10	866	126/123S	13.5	80,000

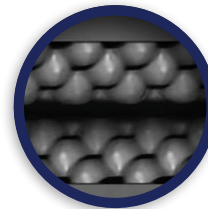
The Stronghold® is designed to bite down on tough terrain, stand up to heavy loads for towing and offer mileage warranty protection for up to 80,000 km. Providing a smooth comfort ride with reliable traction when it's needed most.



SCAN FOR MORE INFO

### STRONG SHOULDER DESIGN

The strong shoulder design, with scooped tread edges, wide grooves, and a sidewall hook pattern, provides lasting grip and traction.



### SOLID TRACTION IN DIRT AND GRAVEL

Wide open grooves in the tread grab and release soft surfaces, while Cooper's 3D-sipe technology helps to provide stability.

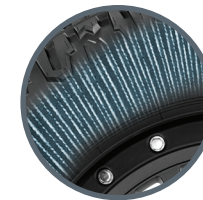
### 1. TREAD



### STRONG SHOULDER DESIGN

Features such as **scooped tread edges**, wide tread grooves and sidewall hook pattern all help provide grip and traction for the life of the tyre.

### 2. CARCASS



### HIGH TENSILE BODY PLY

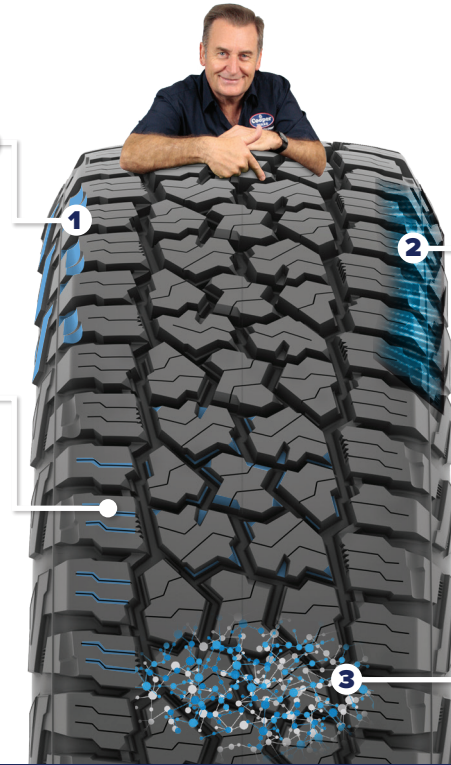
**20% stronger** than most other brands, giving you enhanced resistance to impact damage when driving off-road.

### 3. COMPOUND



### COMPOUND FORMULA

**Chemically Coupled Silica Compound**, provides cut and chip resistance for improved tread life, mileage, grip and safety.



### CARCASS CONSTRUCTION

Super high tensile light truck steel belts offer enhanced strength and durability across the entire tread area, providing better protection against road hazards without a harsh ride.

### CHEMICALLY COUPLED SILICA COMPOUND

The chemically bonded silica compound improves tread life, mileage, grip, and safety.

# HIGHEST MILEAGE ALL-TERRAIN

AT3 - 4S™ / LT™ / XLT™

# WANT HIGHER MILEAGE?



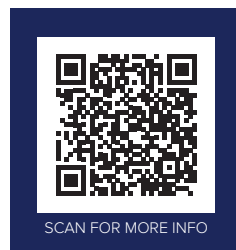
70% Road & Sand

30% Dirt & Mud

		Tyre Size	Ply Rating	OD (mm)	Load/Speed Index	Tread Depth (mm)	Mileage Warranty (kms)*
AT3 4S	16	255/70R16	10	763	111S	11.1	60,000
	20	265/50R20	10	775	111T	9.9	60,000
AT3 LT	16	245/70R16	10	750	118/115R	13.1	80,000
		265/70R16	10	778	121/118R	13.1	80,000
		225/75R16	10	745	115/112R	13.1	80,000
		265/75R16	10	803	123/120R	13.1	80,000
	17	265/65R17	10	775	120/117R	12.7	80,000
		285/65R17	10	802	121/118S	12.7	80,000
		265/70R17	10	804	121/118S	13.1	80,000
		275/70R17	10	817	121/118R	13.1	80,000
	18	265/60R18	10	775	119/116S	12.7	80,000
		265/65R18	10	811	122/119R	12.7	80,000
AT3 XLT	16	285/75R16 LT	10	827	126/123R	13.5	80,000
	17	285/70R17	10	835	121/118S	13.5	80,000
	18	285/65R18	10	826	125/122S	13.1	80,000

These sizes are for light truck construction.

The AT3 LT™ and AT3 4S™ are among Cooper Tires' most popular all-terrain tyres, offering reliability, safety, and durability. Available in passenger and light truck options.



## CARCASS CONSTRUCTION

Next-gen silica compound improves wet grip and extends tread life.

## AQUA VAC CHANNELS

Built to improve the tyre's resistance to hydroplaning by allowing water to evacuate quickly from the tread surface.

## SCALLOPED SHOULDERS

Delivers increased soft-surface off-road traction usually reserved for a more aggressive tread design. Allowing additional traction without compromising on-road tyre performance and safety.



## COMPOUND FORMULA

Advanced silica compound provides excellent wet traction, as well as wear.



AT3 XLT™ SIDEWALL

## WHISPER GROOVE TECHNOLOGY

Whisper Grooves™ Technology provides a sound barrier that makes for a more peaceful, quiet ride.

## MICRO GAUGE™ SIPES

Reduce tread damage.

## 1. TREAD



### DEEP TRENDS

Provides grip in wet, dry, and off-road conditions.

## 2. CARCASS



### HIGH TENSILE BODY PLY

20% stronger than most other brands, giving you enhanced resistance to impact damage when driving off-road.

## 3. COMPOUND



### COUPLED SILICA

Next-Gen Silica Compound provides cut and chip resistance for improved tread life, mileage, grip and safety.

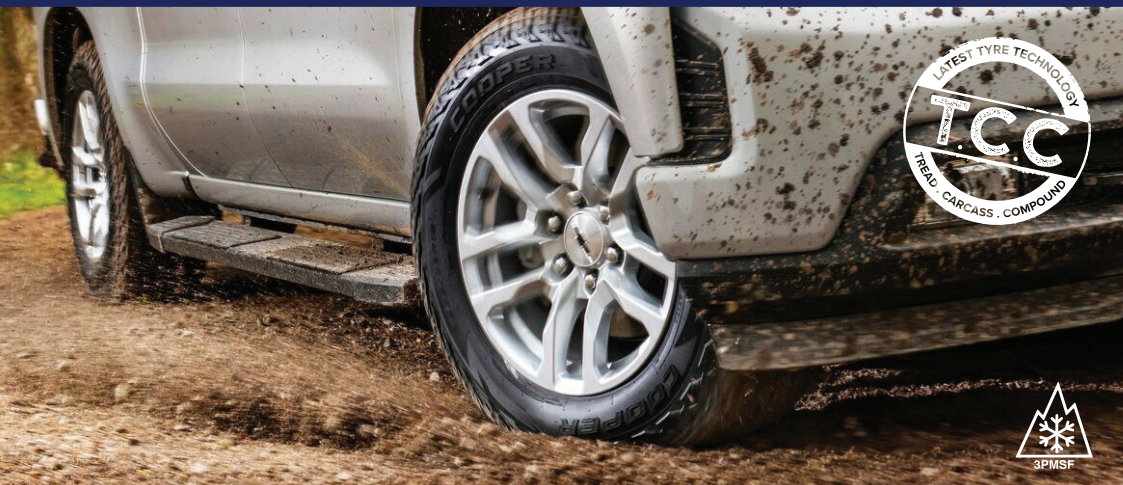
\*Mileage warranty. Terms and conditions apply. LT = Light Truck



# MOST VERSATILE SUV TYRE

ROAD+TRAIL® AT

# BEST ALL SEASON TYRE



70% Road & Sand 30% Dirt & Mud

	Tyre Size	Treadwear & Traction Rating	OD (mm)	Load/ Speed Index	Tread Depth (mm)	Mileage Wty (km)*
15	225/70R15	620 A B	697	100T	10.3	60,000
	235/75R15	620 A B	733	109T	10.3	60,000
16	235/70R16	620 A B	736	106T	10.3	60,000
	245/70R16	620 A B	750	107T	10.3	60,000
	265/70R16	620 A B	778	112T	10.3	60,000
17	235/65R17	620 A B	738	108H	10.3	60,000
	245/65R17	620 A B	750	111T	10.3	60,000
	255/65R17	620 A B	764	110T	10.3	60,000
	265/65R17	620 A B	776	112T	10.3	60,000
	265/70R17	620 A B	801	115T	10.3	60,000
18	225/60R18	620 A B	727	104H	9.5	60,000
	235/60R18	620 A B	739	107H	9.5	60,000
	265/60R18	620 A B	775	114H	9.5	60,000
	265/65R18	620 A B	801	116H	10.3	60,000

The ROAD+TRAIL® AT is one of our most popular all-terrains for drivers seeking reliable and safe performance. Great for weekend getaways and guaranteed to last up to 60,000 KM for real value of money.



SCAN FOR MORE INFO

\*Mileage warranty. Terms and conditions apply.

## ENDURA GUARD DESIGN

A durable internal construction helps the tire keep its shape when driving over rough surfaces, giving you more even wear across the tread.

## THICK, RUGGED TREAD BLOCKS

Interlocking tread blocks help provide the grip and consistent control you need on uneven terrain.

## GRIP TECHNOLOGY

Connected centre tread lugs help provide stability and traction on surfaces.



## TRACTION SHOULDERS

The continuous tread pattern extends over 50% further down the sidewall than its predecessor, and the angled design is twice as thick, providing more surface area to grip soft or uneven terrain.

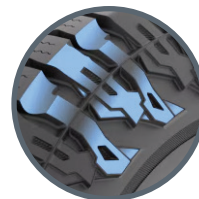
## STRENGTHENED CARCASS

A reinforced carcass improves durability, stability, and puncture resistance, ensuring reliable performance across all terrains.

## SILICA COMPOUND

Provides excellent wet traction and highway handling while lowering rolling resistance, for more grip and better fuel efficiency.

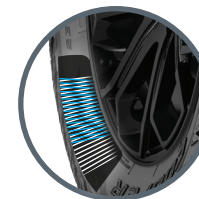
### 1. TREAD



### TRACTION SHOULDERS

The tread pattern extends over 50% farther down the sidewall than before, with a thicker, angled design for better grip on soft or uneven ground.

### 2. CARCASS



### STRENGTHENED CARCASS

Strengthened Carcass enhances durability, stability, and puncture resistance for dependable performance on any terrain.

### 3. COMPOUND



### COUPLED SILICA

Next-Gen Silica Compound provides cut and chip resistance for improved tread life, mileage, grip and safety.

# SPORTS ALL-TERRAIN LTZ PRO®

# WANT A SPORTS UTILITY TYRE THAT LASTS?



70% Road & Sand 30% Dirt & Mud

	Tyre Size	Tread-wear & Traction Rating	OD (mm)	Load/Speed Index	Tread Depth (mm)	Mileage Warranty (kms)*
18	285/60R18	520/A/B	800	120S	11.1	50,000
20	285/50R20 XL	520/A/B	795	116S	11.1	50,000

The LTZ PRO® is a hybrid between an original highway design and an all-terrain tyre. Higher tensile quality materials give more strength, increasing its load-carrying capacity.



\*Mileage warranty. Terms and conditions apply. XL = Extra Load



**ENHANCED BUTTRESS DESIGN**

Designed with the perfect balance between style, rugged-off road looks and performance, giving you enhanced traction and abrasion resistance.

**DUAL 'Z' SHAPED SIPES**

Balances tread element stiffness, giving you excellent tread wear and handling for long, dependable traction in all weather conditions.

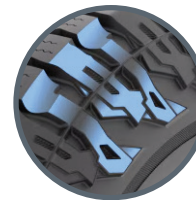
**COMPOUND FORMULA**

The advanced silica compound provides top wet traction, braking, and handling in all conditions.

**SPORTS TRUCK CARCASS CONSTRUCTION**

The Cooper LTZ PRO® combines sports truck and all-terrain construction with stronger steel belts for increased load capacity and damage resistance off-road, without adding weight or fuel consumption.

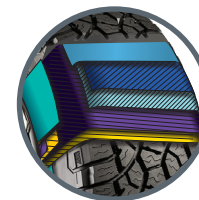
### 1. TREAD



#### TREAD TECHNOLOGY

Enhanced Buttress Design for the perfect balance between style, rugged off-road looks and performance, giving you enhanced traction and abrasion resistance.

### 2. CARCASS



#### SPORTS TRUCK CONSTRUCTION

Has stronger *super tensile* that increase the load carrying capacity and provide better resistance to damage when off-road.

### 3. COMPOUND



#### ADVANCED SILICA COMPOUND

Formulated with the optimum content of *chemically-coupled silica*. This provides excellent wet traction and highway handling while lowering rolling resistance, which gives you more grip and better fuel efficiency.

# LIFESTYLE SUV ATT®



80% Road & Sand

20% Dirt & Mud

	Tyre Size	Treadwear & Traction Rating	OD (mm)	Load/Speed Index	Tread Depth (mm)	Mileage Warranty (kms)*
16	235/60R16 XL	620 A	688	104H	9.3	60,000
	215/65R16 XL	620 A	686	102H	9.3	60,000
	245/70R16 XL	620 A	750	111H	9.3	60,000
	265/70R16 XL	620 A	778	116T	9.3	60,000
	215/55R17 XL	620 A	668	98H	9.3	60,000
17	225/55R17 XL	620 A	680	101H	9.3	60,000
	215/60R17 XL	620 A	690	100H	9.3	60,000
	225/60R17 XL	620 A	702	103H	9.3	60,000
	235/60R17 XL	620 A	714	106H	9.3	60,000
	225/65R17 XL	620 A	724	106H	9.3	60,000
	265/65R17 XL	620 A	776	116H	9.3	60,000
18	225/55R18 XL	620/A	705	102H	9.3	60,000
	235/55R18 XL	620 A	715	104H	9.3	60,000
	255/55R18 XL	620 A	737	109H	9.3	60,000
	245/60R18 XL	620 A	751	109H	9.3	60,000
	265/60R18 XL	620 A	775	114H	9.3	60,000
	285/60R18 XL	620 A	799	120T	9.3	60,000
	235/65R18 XL	620 A	763	110H	9.3	60,000
	255/55R19 XL	620 A	763	111H	9.3	60,000

\*Mileage warranty. Terms and conditions apply.  
XL = Extra Load

The ATT® is designed with SUV drivers in mind and the lifestyle you lead. It delivers safety, reliability, durability, comfort and value for money.



# WANT ALL-TERRAIN PERFORMANCE IN AN SUV TYRE?

## WEAR SQUARE VISUAL INDICATORS

Changes as your tyre wears, making it easy to determine the tread life remaining. Confidence and safety you can see.



## RAISED CURB-BAR DESIGN

Enhances damage resistance by increasing the upper sidewall strength and protecting the tyre from damage.

## WHISPER GROOVES™ SHIELDS

Provide a sound barrier that minimises tyre noise for a quieter ride by reducing the noise created within the tyre cavity.

## COMPOUND FORMULA

Advanced silica improves wet traction, handling, and fuel efficiency.

## STONE EJECTOR LEDGES AND ENGINEERED GROOVE SHAPES

Easily eject stones and gravel, protecting the carcass from stone drilling and maintaining a clear tread for enhanced rough road traction.

## HIGH TENSILE BODY PLY

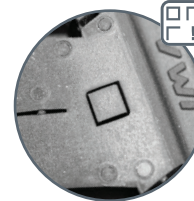
Enhances damage resistance and increases load carrying capacity. **49% stronger** than standard SUV tyres.

## AQUA VAC CHANNELS

Improve the tyre's resistance to hydroplaning by allowing water to evacuate quickly from the tread surface.



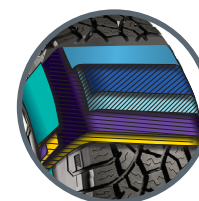
### 1. TREAD



### TREAD TECHNOLOGY

**Wear Square Visual Indicators** change as your tyres wear, making it easy to determine the tread life remaining, giving you confidence and safety you can see.

### 2. CARCASS



### 20% STRONGER THAN STANDARD SUV TYRES

**High Tensile Body Ply** enhances damage resistance and increases load carrying capacity.

### 3. COMPOUND



### COMPOUND FORMULA

**Advanced Silica Compound**, formulated with the optimum content of chemically-coupled silica. This provides excellent wet traction and highway handling while lowering rolling resistance, for more grip and better fuel efficiency.

# ULTIMATE GRIP & MILEAGE TYRE

## PROCONTROL®

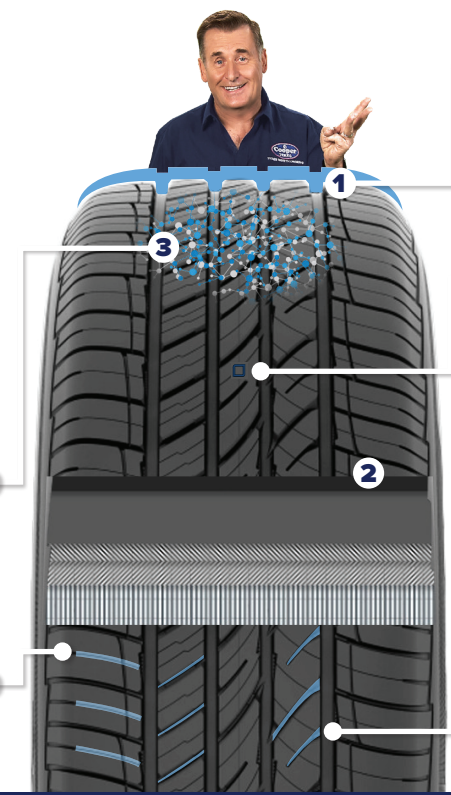
# WANT SAFETY AND MILEAGE?



**HARD WEARING**  
High 740 Treadwear & Traction Rating on most sizes means more mileage. Guaranteed for up to 70,000 km, giving you peace of mind and better value for money.

**WEAR EXTENDING TECHNOLOGY**  
Larger polymers strengthen the compound, supporting increased tread longevity.

**WIDENING SIPING TECHNOLOGY**  
Sipes widen as the tyre wears to help maintain grip on the road allowing water to clear the tread.



**EVEN WEAR ARC TECHNOLOGY**  
Tyre shape engineered to help strategically balance pressure at the tire-to-road contact area.

**WEAR SQUARE VISUAL INDICATORS**  
Change as your tyre wear, making it easy to determine the tread life remaining, giving you confidence and safety you can see.

**ARMOUR BELT TECHNOLOGY**  
Steel belts deliver the stiffness and strength required for precise steering response.

**WATER EVACUATION GROOVES**  
Sweeping grooves that help evacuate water from the tread. This helps improve wet traction.

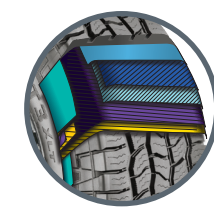
### 1. TREAD



**TREAD TECHNOLOGY**

**Even Wear Arc Technology** is the tyre shape which has been engineered to help strategically balance pressure at the tyre to road contact area.

### 2. CARCASS



**STEEL BELT TECHNOLOGY**

**Steel Belts** within the tread area that help provide stiffness and strength needed for crisp steering response.

### 3. COMPOUND



**WEAR EXTENDING TECHNOLOGY**

**Silica-rich compound** improves braking and grip in wet conditions.

The ProControl® tyre eliminates uncertainties on your journey with excellent wet and snow traction, ensuring confidence through crisp handling and an extended lifespan.



90% Road & Sand 10% Dirt & Mud

	Tyre Size	Treadwear & Traction Rating	OD (mm)	Load/Speed Index	Tread Depth (mm)	Mileage Warranty (kms)*
16	205/55R16	740 A	639	91V	7.9	70,000
	215/60R16	740 A	672	95V	7.9	70,000
17	215/55R17	740 A	676	94V	7.9	70,000
	225/55R17	740 A	688	97V	7.9	70,000
	225/60R17	740 A	710	99V	7.9	70,000
	225/65R17	740 A	732	102H	7.9	70,000
	235/65R17	600 A	747	104H	9.5	70,000
18	245/65R17	740 A	759	107H	9.5	70,000
	265/65R17	740 A	785	112H	9.5	70,000
	245/45R18	740 A	685	100V	7.9	70,000
	225/55R18	740 A	713	98H	7.9	70,000
	235/55R18 XL	740 A	723	104V	8.7	70,000
	225/60R18	740 A	736	100H	7.9	70,000
19	235/60R18 XL	740 A	748	107V	8.7	70,000
	235/65R18	740 A	772	106V	8.7	70,000
	225/55R19	740 A	740	99V	7.9	70,000
20	275/45R20	740 A	765	110V	8.7	70,000
	255/50R20	740 A	773	109V	8.7	70,000
	265/50R20	740 A	783	111V	8.7	70,000

\*Mileage warranty. Terms and conditions apply. XL = Extra Load

# BEST VALUE SUV

CTT®



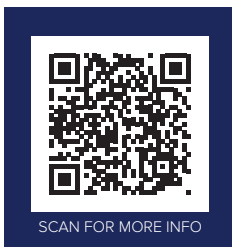
# WANT SAFETY AND VALUE?

90% Road & Sand

10% Dirt & Mud

	Tyre Size	UTQG wear / traction	OD (mm)	Load/Speed Index	Tread Depth (mm)
16	215/65R16	500 A	686	98H	7.9
17	215/60R17	500 A	690	96H	7.9
	225/60R17	440 A	702	99H	7.9
18	215/55R18	500 A	693	55V	7.9
	225/55R18	440 A	705	98V	7.9
	235/55R18	440 A	715	100V	7.9
	225/60R18	440 A	727	100V	7.9
	235/60R18	440 A	727	103V	7.9
19	235/50R19	440 A	719	99V	7.9
	225/55R19	440 A	731	99H	7.9
	235/55R19	440 A	741	105H	7.9
	245/55R19	500 A	753	103V	7.9
20	245/45R20	440 A	728	103V	7.9
	235/55R20	500 A	766	102V	7.9

The Cooper Tires® Evolution CTT is a high-performance tire designed for SUVs, offering low road noise, excellent traction, improved fuel economy, and a next-generation tread compound.



## U-SHAPED FLUID OPTIMISED GROOVES

A unique design that allows water to evacuate from the tread surface, preventing hydroplaning giving you more control on wet roads.

## FOUR LAYER NOISE ISOLATION BARS

Designed to effectively disperse tyre noise, providing quieter operation.



## COMPOUND FORMULA

Anti-skid coupled-silica compound, with four times the silica mixed with anti-skid resin, is designed for excellent wet traction, longer tread wear and reduced rolling resistance.



## SOUND PROOF LAYER

Developed to absorb road noise along with improving ride comfort.

## CHAMFERED SHOULDER DESIGN

Made to improve tread rigidity, handling and braking distance, providing safety and giving you a better feel for the road.

### 1. TREAD



### TREAD TECHNOLOGY

**U-Shaped Fluid Optimised Grooves** are a unique design that allows water to evacuate from the tread surface, preventing hydroplaning and giving you more control on wet roads.

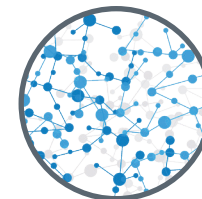
### 2. CARCASS



### CARCASS CONSTRUCTION

**Sound Proof Layer** absorbs road noise for a comfortable, quiet ride.

### 3. COMPOUND



### COMPOUND FORMULA

**Anti-Skid Coupled-Silica Compound** add strength to the compound to help extend tread life.

# BEST VALUE CAR

C5®



# CAR TYRES MADE TO LAST

90% Road & Sand

10% Dirt & Mud

	Tyre Size	UTQG wear / traction	OD (mm)	Load/ Speed Index	Tread Depth (mm)
15	185/60R15	540 A	603	84V	7.8
	195/60R15	540 A	615	88V	7.8
	185/65R15	540 A	621	88V	7.8
	195/65R15	540 A	635	91V	7.8
	205/65R15	540 A	647	94V	7.8
16	205/55R16	540 A	632	91V	7.8
	215/55R16	540 A	668	93V	7.8
	205/60R16	540 A	652	92V	7.8
	215/60R16	540 A	664	95V	7.8
17	215/50R17	540 A	648	91V	7.8
	225/50R17	540 A	658	94V	7.8
	215/55R17	540 A	668	94V	7.8
	225/55R17	540 A	680	97V	7.8
	225/65R17	540 A	724	102V	7.8

The Cooper Tires® Evolution C5™ is the perfect tyre for everyday driving, providing a quieter ride along with safe and comfortable performance.



SCAN FOR MORE INFO

## INTERMEDIATE RIBS

Ensures grip and performance are at a maximum for the life of the tyre.

## SOLID SHOULDER NOISE-SEALING RIBS

Designed to reduce vibrations, absorbing noise to give a more comfortable drive.

## COMPOUND FORMULA

Anti-skid coupled-silica compound, with four times the silica mixed with anti-skid resin, is designed for excellent wet traction, longer treadwear and reduced rolling resistance.

## FOUR WIDE CIRCUMFERENTIAL GROOVES

Effectively channels water out of the tyre to prevent hydroplaning, giving you more control on wet roads.

## HIGH DENSITY SIPES

Creates a more flexible tread to deliver better road traction and safety, especially in the wet.



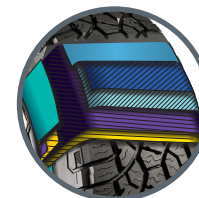
### 1. TREAD



#### TREAD TECHNOLOGY

Intermediate Ribs ensure grip and performance are at a maximum for the life of the tyre.

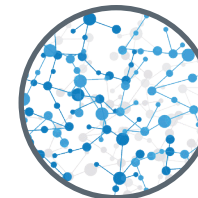
### 2. CARCASS



#### CARCASS CONSTRUCTION

High Tensile Body Ply is 20% stronger than most brands, providing better resistance to rock cuts and impact damage. It also reduces vibrations and absorbs noise for a smoother, quieter drive.

### 3. COMPOUND



#### COMPOUND FORMULA

Anti-Skid Coupled-Silica Compound, with four times the silica mixed with anti-skid resin, is designed for excellent wet traction, longer treadwear and reduced rolling resistance.



# JOIN THE CLUB

Ask In-store



## JOIN THE COOPER TIRES® 100K CLUB.

The Cooper Tires® exclusive 100K club celebrates local drivers that have travelled in excess of 100,000KM on one set of Cooper® tyres. If you have done over 100,000KM on your set of Coopers, scan the QR code, submit your details and tell us about your journey, a little about yourself and your tyres and why you love Coopers, and once qualified we'll send a prize pack your way to celebrate.

new prototypes. Tyres are rigorously tested to research and analyse specific attributes such as grip, strength, and mileage. The test results and feedback from Australia's Cooper® tyre specialists are then sent back to Cooper® in America for further analysis and design improvements, to ensure the tyres can withstand the most extreme conditions you can find in Australia.

Buying tyres from the Cooper Tires® range means that you have bought tyres that are made to last.

Cooper Tires® uses Australia's harsh terrain as a testing ground for its current range of tyres and

It is due to this proven mixture of the latest tyre technology and rigorous testing that we are so confident in Cooper® tyres that we happily reward people who achieve more than our famous 80,000KM warranty.

### Driven 100,000 KM on one set of Cooper® tyres?



### SCAN TO JOIN EVERY MEMBER RECEIVES A FREE GIFT\*



\*Terms and conditions apply. Visit [coopertires.com.au](http://coopertires.com.au) for more information. Gift items may vary.



**TYRES WORTH OWNING**

[www.coopertires.com.au](http://www.coopertires.com.au)

1800 681 298

Your nearest Authorised Cooper Tires Stockist is:

Imported & distributed by:

