

1381 STAYNER

STAYNER, ONTARIO, CANADA

HERITAGE RESTORATIONS

SALES & PRICING

CONTACT - MATTHEW BRANDSTADT 254-230-6900 (MATTB@HERITAGEBARN.S.COM)

CONTACT - CALEB TITTLE 254-716-1013 (CALEB@HERITAGEBARN.S.COM)

CONSTRUCTION & DESIGN

CONTACT - ZAIN DUMONT 254-717-5952 (ZAIN@HERITAGEBARN.S.COM)

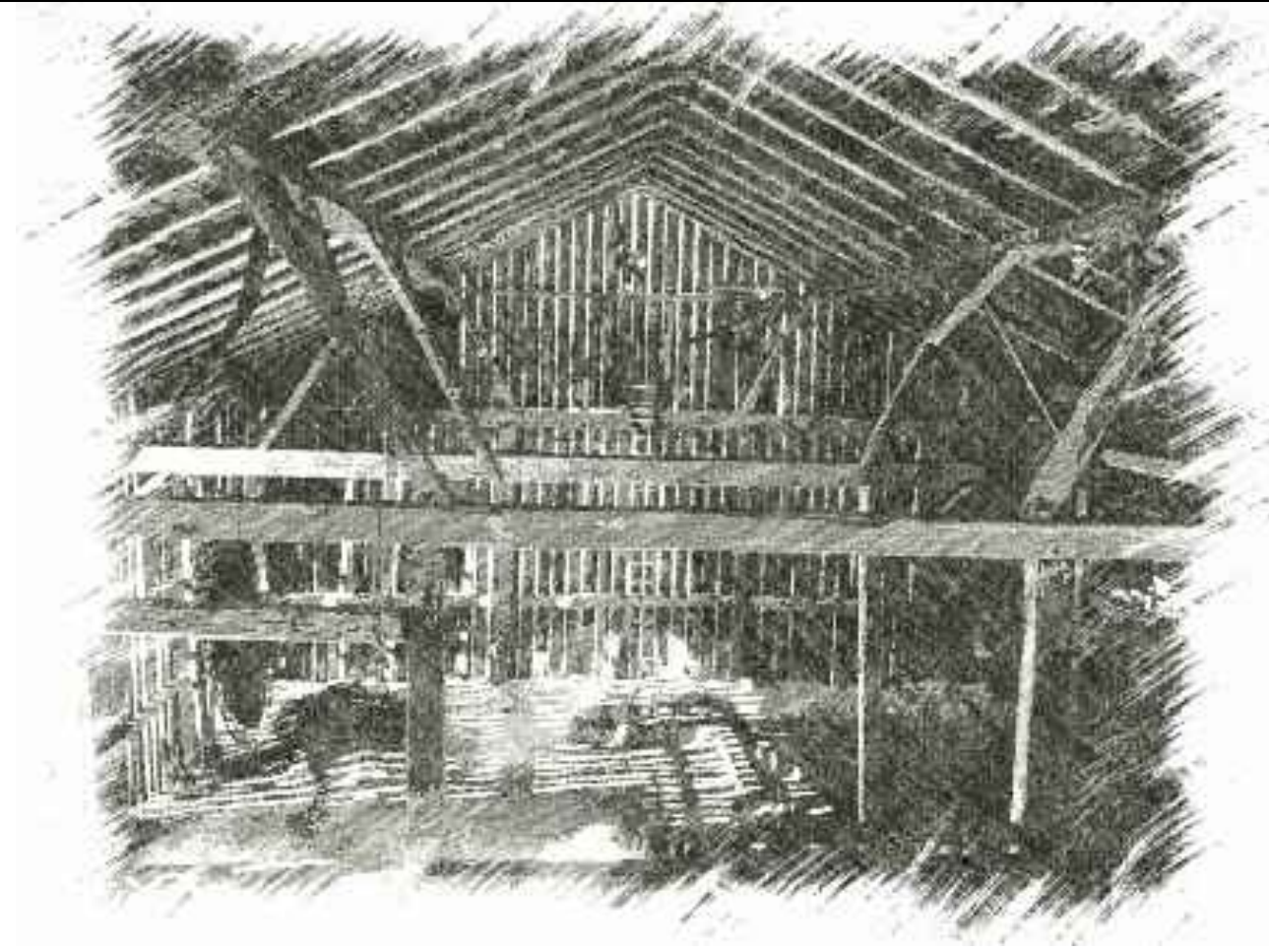
CONTACT - KURT ORTIGO 501-282-8929 (KURT@HERITAGEBARN.S.COM)

DRAWING INDEX:

- CS COVER SHEET
- B100 LEVEL 01 FLOOR PLAN
- B200 BENT A ELEVATION
- B201 BENT B ELEVATION
- B202 BENT C ELEVATION
- B203 BENT D ELEVATION
- B204 BENT E ELEVATION
- B205 SIDEWALL 01 ELEVATION
- B206 SIDEWALL 02 ELEVATION
- B500 TYPICAL TIMBER DIMENSIONS
- B501 TYPICAL JOINERY DETAILS
- B600 JOINERY SCHEMATIC



1381 STAYNER
STAYNER, ONTARIO, CANADA



ABOUT STAYNER

Location: Stayner, Ontario, Canada

Era: Circa 1850

Architecture Style: English

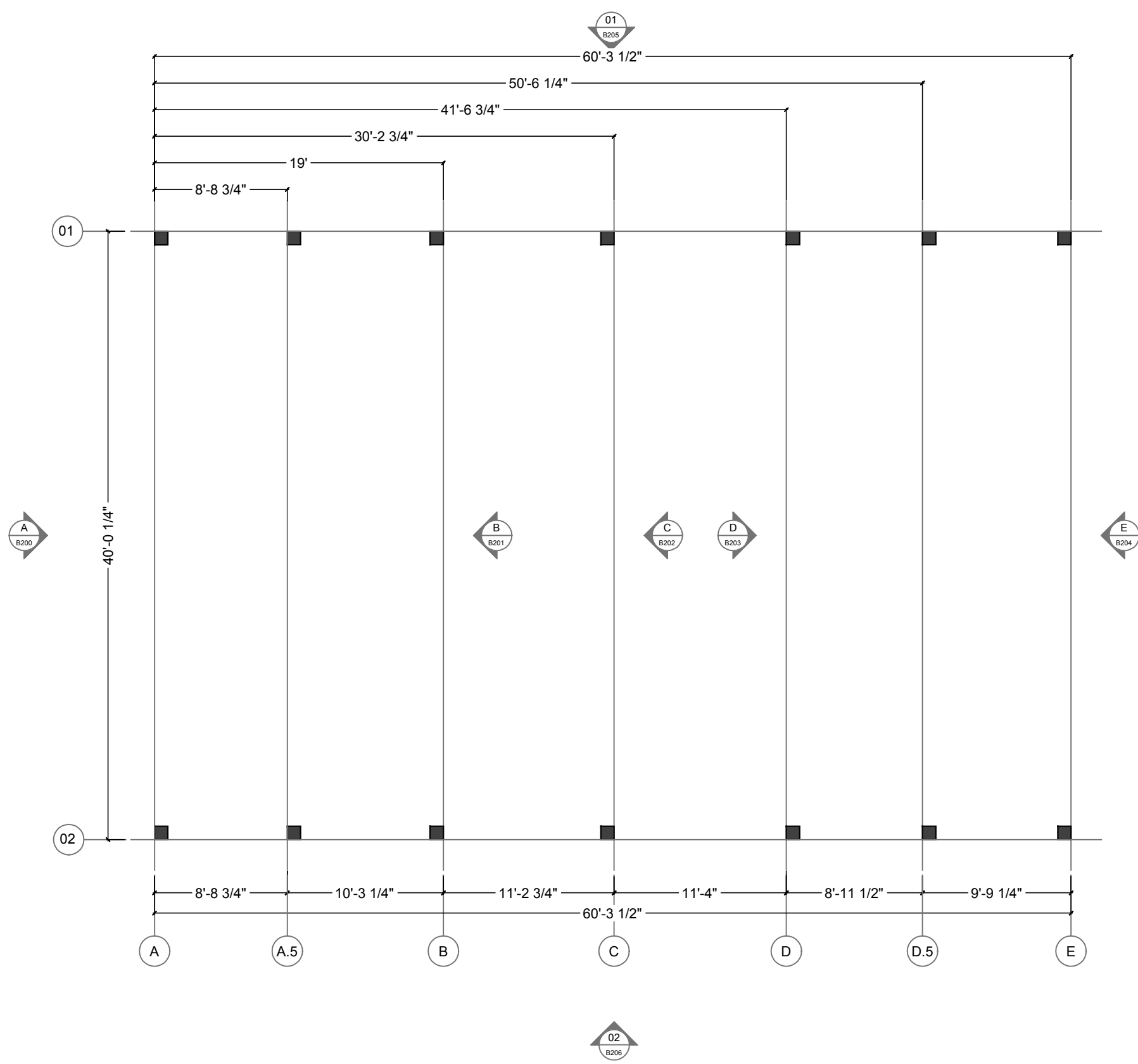
Timber Species: Softwood (Hemlock, Eastern Pine, etc., etc.)

Notable Features: Large Hand-Hewn Timbers, Pole Rafters, Canted Queen Posts

REV.	REVISION DESCRIPTION	DATE

REVISION
01
DATE: 180219

DETAILS
CS
DESIGN BY: JJK
DRAWN BY: KMG

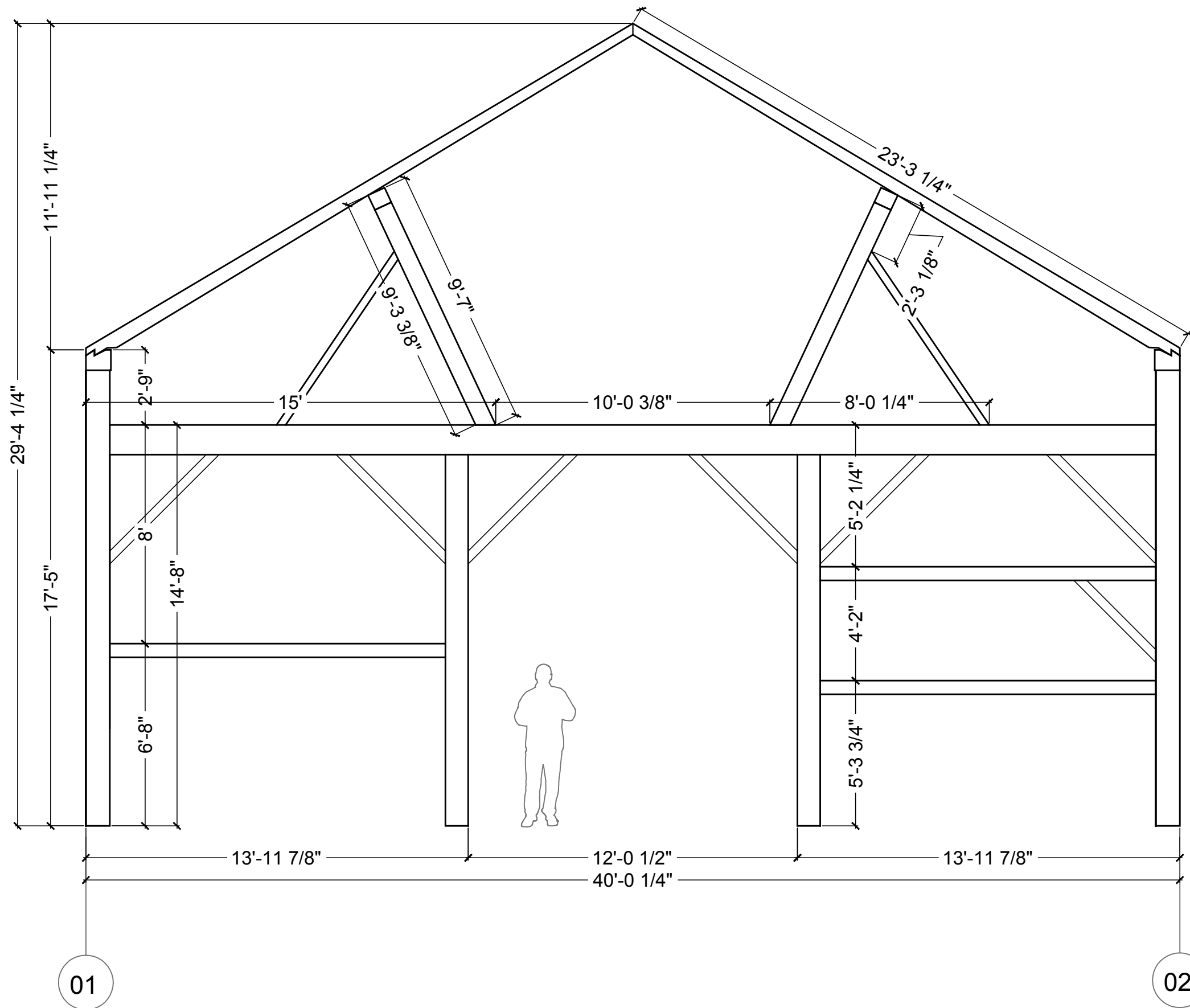


LEVEL 01 FLOOR PLAN
 SCALE: 1/8" = 1'

REV.	REVISION DESCRIPTION	DATE

REVISION
01
DATE: 180226

PLANS
B100
DESIGN BY: JJK
DRAWN BY: KMC



BENT A ELEVATION

SCALE: 1/4" = 1'

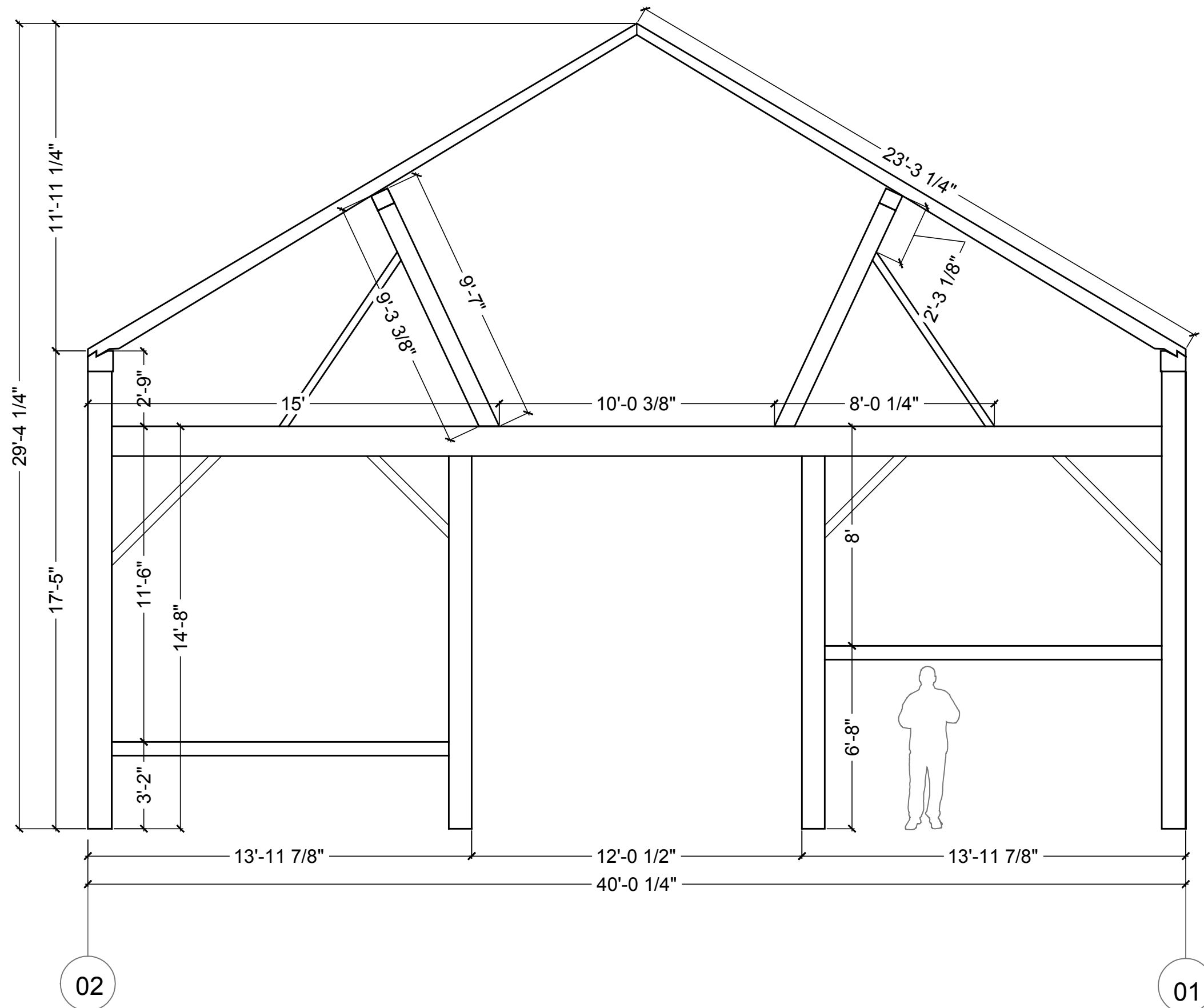
01

02

REV.	REVISION DESCRIPTION	DATE

REVISION
01
DATE: 180226

ELEVATIONS
B200
DESIGN BY: JJK
DRAWN BY: KMG



BENT B ELEVATION
SCALE: 1/4" = 1'

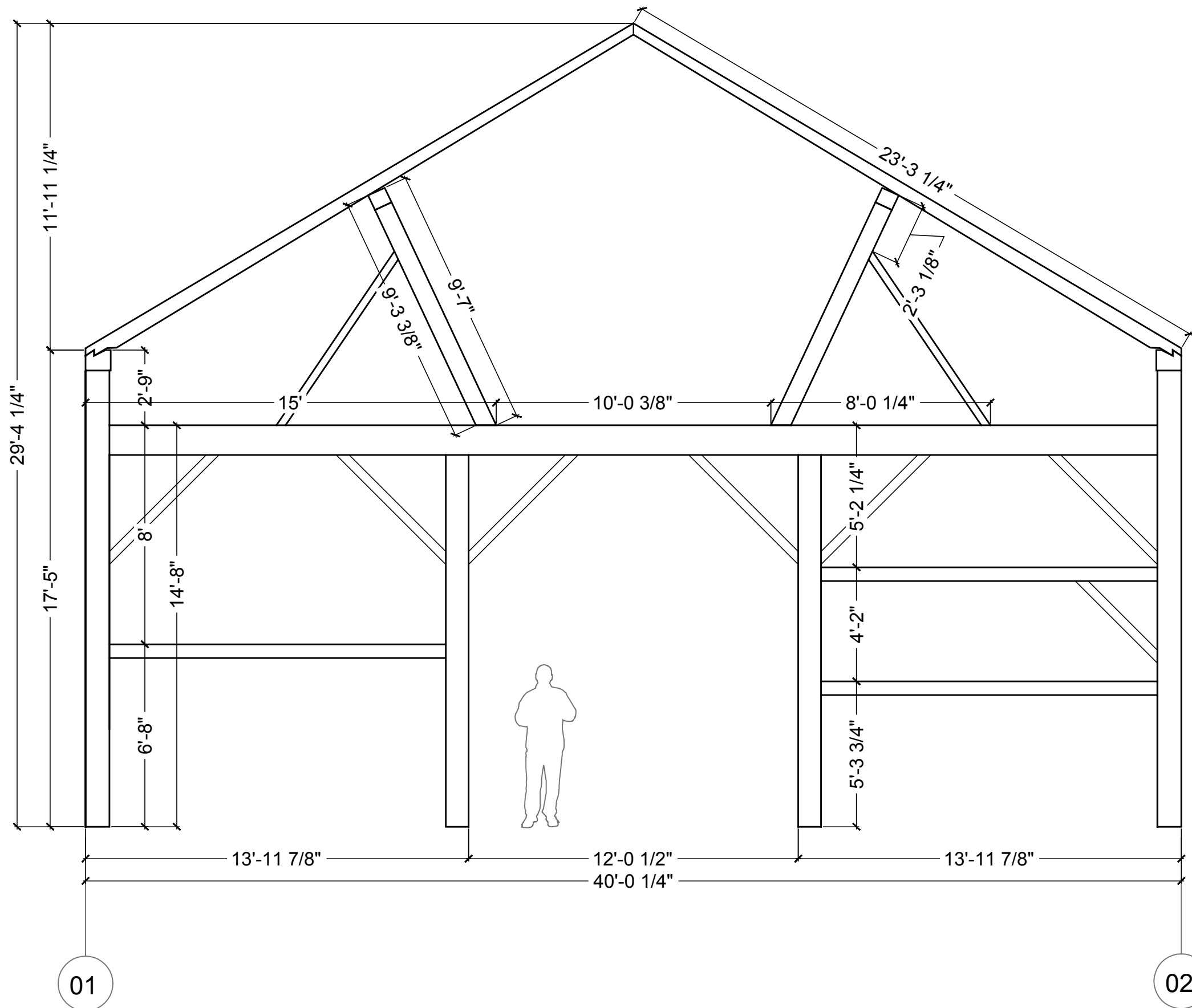
02

01

REV.	REVISION DESCRIPTION	DATE

ELEVATIONS
01
DATE: 180226

SHEET TITLE
B201
DESIGN BY: JJK
DRAWN BY: KMC

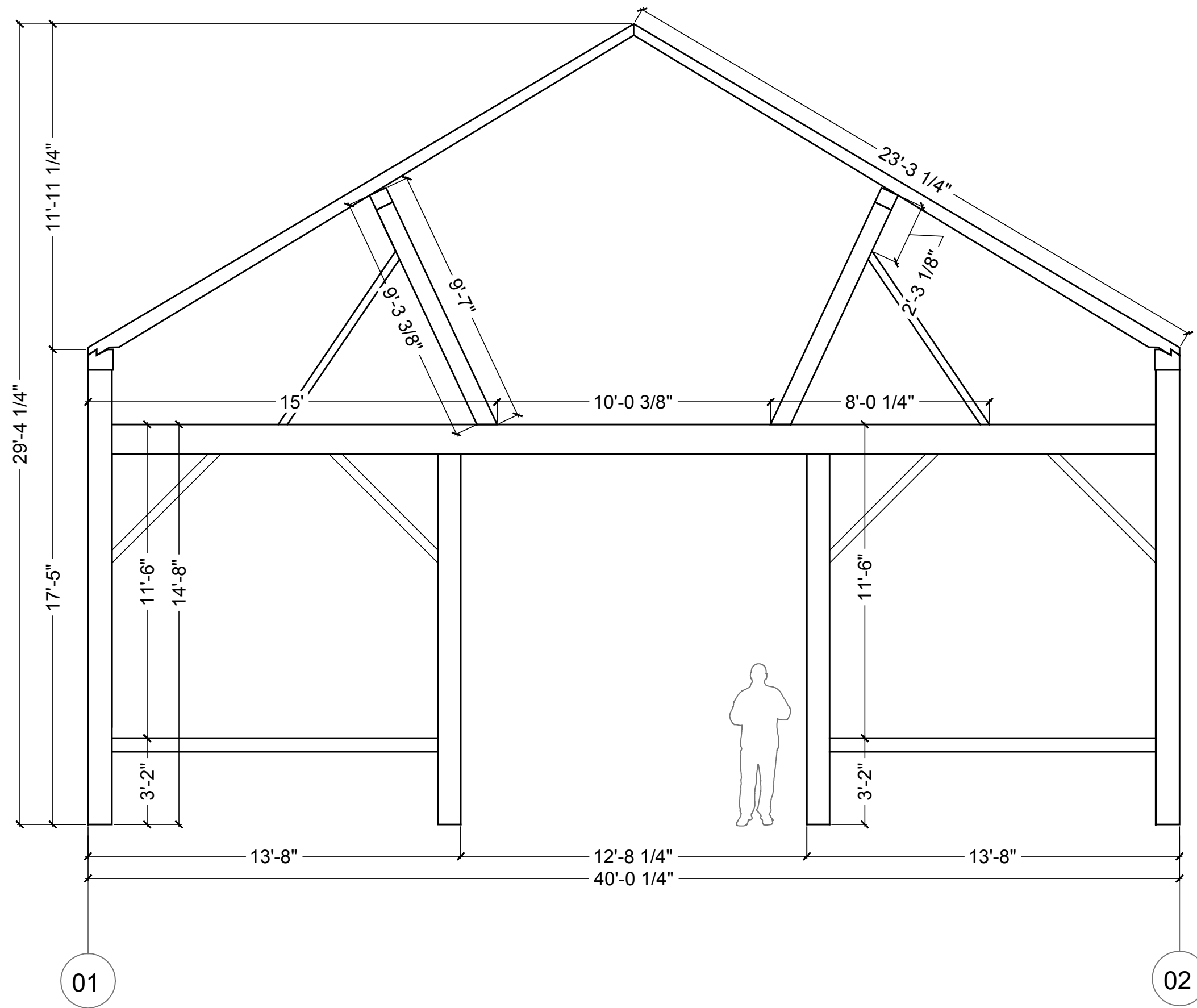


BENT C ELEVATION
SCALE: 1/4" = 1'

REV.	REVISION DESCRIPTION	DATE

REVISION
01
DATE: 180226

ELEVATIONS
B202
DESIGN BY: JJK
DRAWN BY: KMG



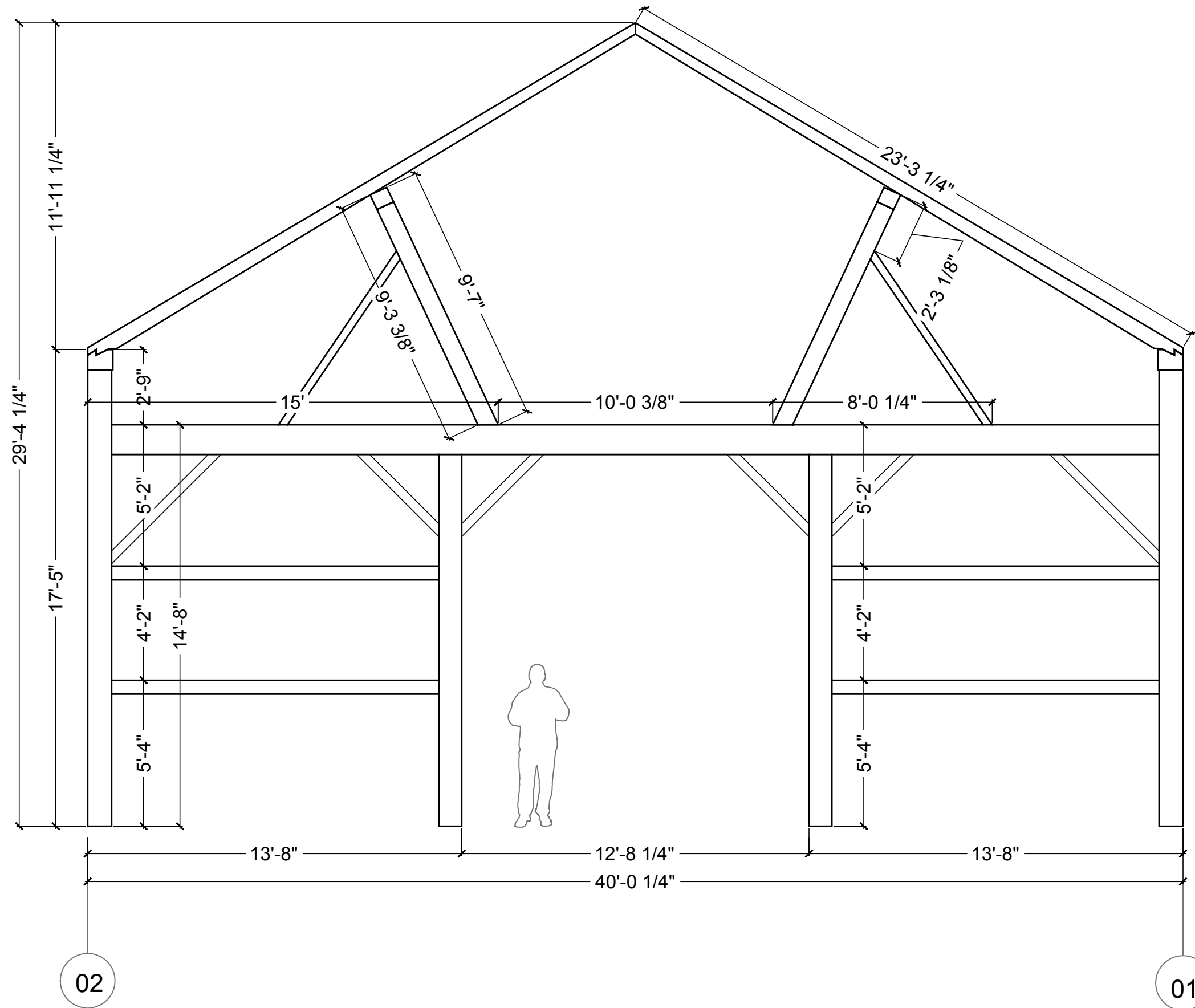
BENT D ELEVATION
SCALE: 1/4" = 1'

1381 STAYNER
STAYNER, ONTARIO, CANADA

REV.	REVISION DESCRIPTION	DATE
-	-	-
-	-	-
-	-	-
-	-	-

REVISION
01
DATE: 180226

ELEVATIONS
B203
DESIGN BY: JJK
DRAWN BY: KMG



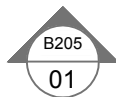
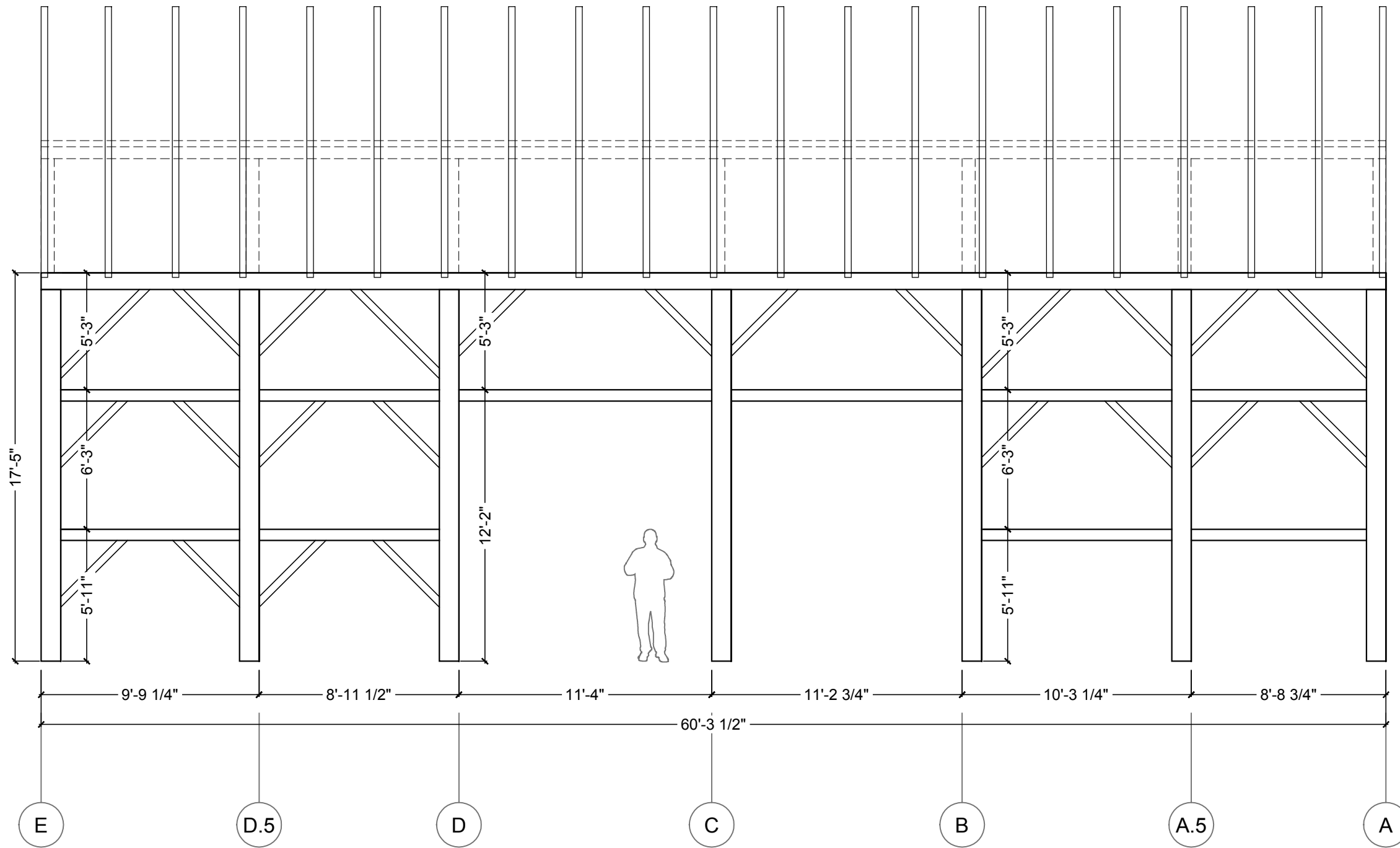
BENT E ELEVATION
SCALE: 1/4" = 1'

1381 STAYNER
STAYNER, ONTARIO, CANADA

REV.	REVISION DESCRIPTION	DATE
-	-	-
-	-	-
-	-	-
-	-	-

REVISION
01
DATE: 180226

ELEVATIONS
B204
DESIGN BY: JJK
DRAWN BY: KMG



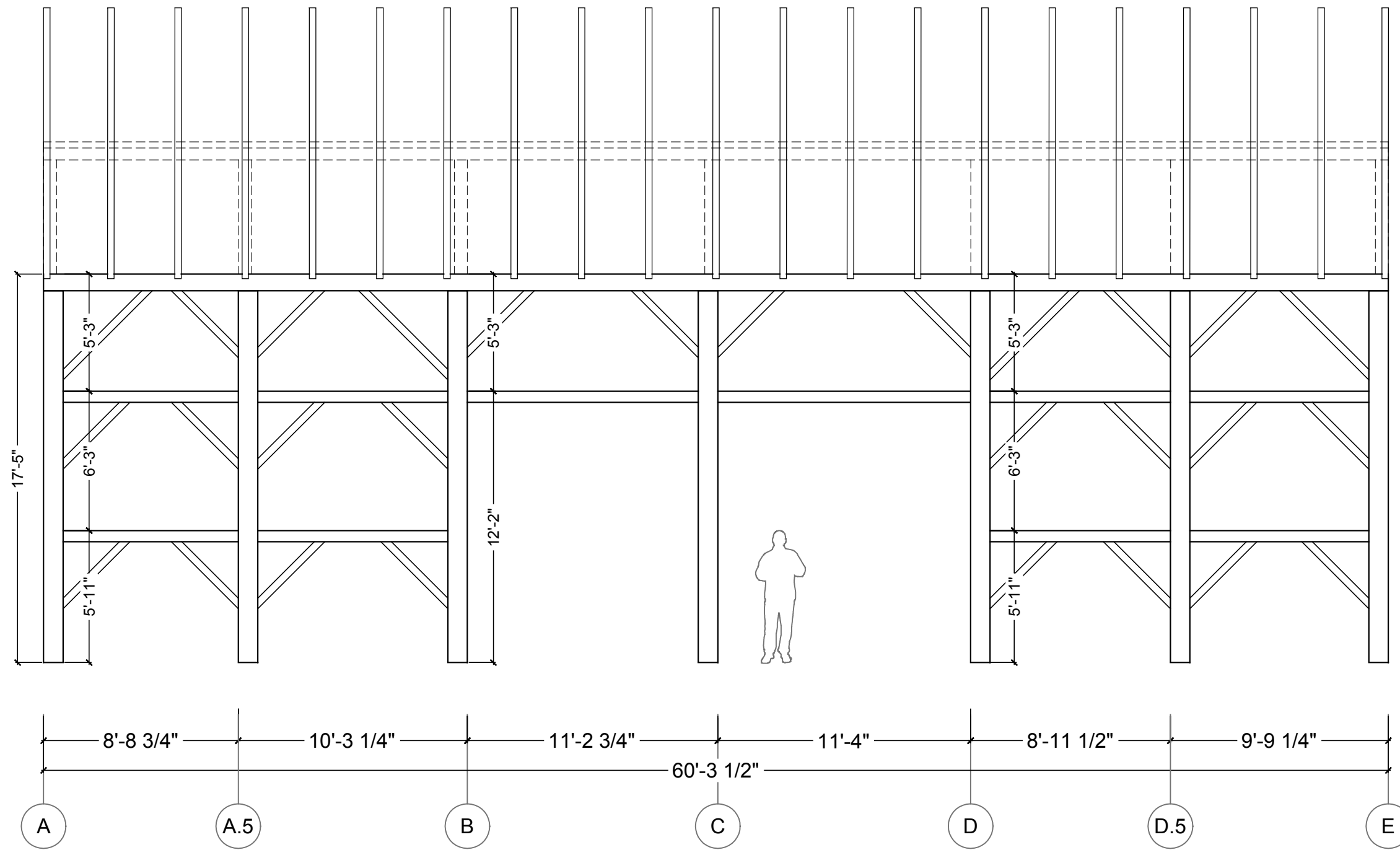
SIDEWALL AT GRID LINE 01 ELEVATION

SCALE: 3/16" = 1'

REV.	REVISION DESCRIPTION	DATE

REVISION
01
DATE: 180226

ELEVATIONS
B205
DESIGN BY: JJK
DRAWN BY: KMG



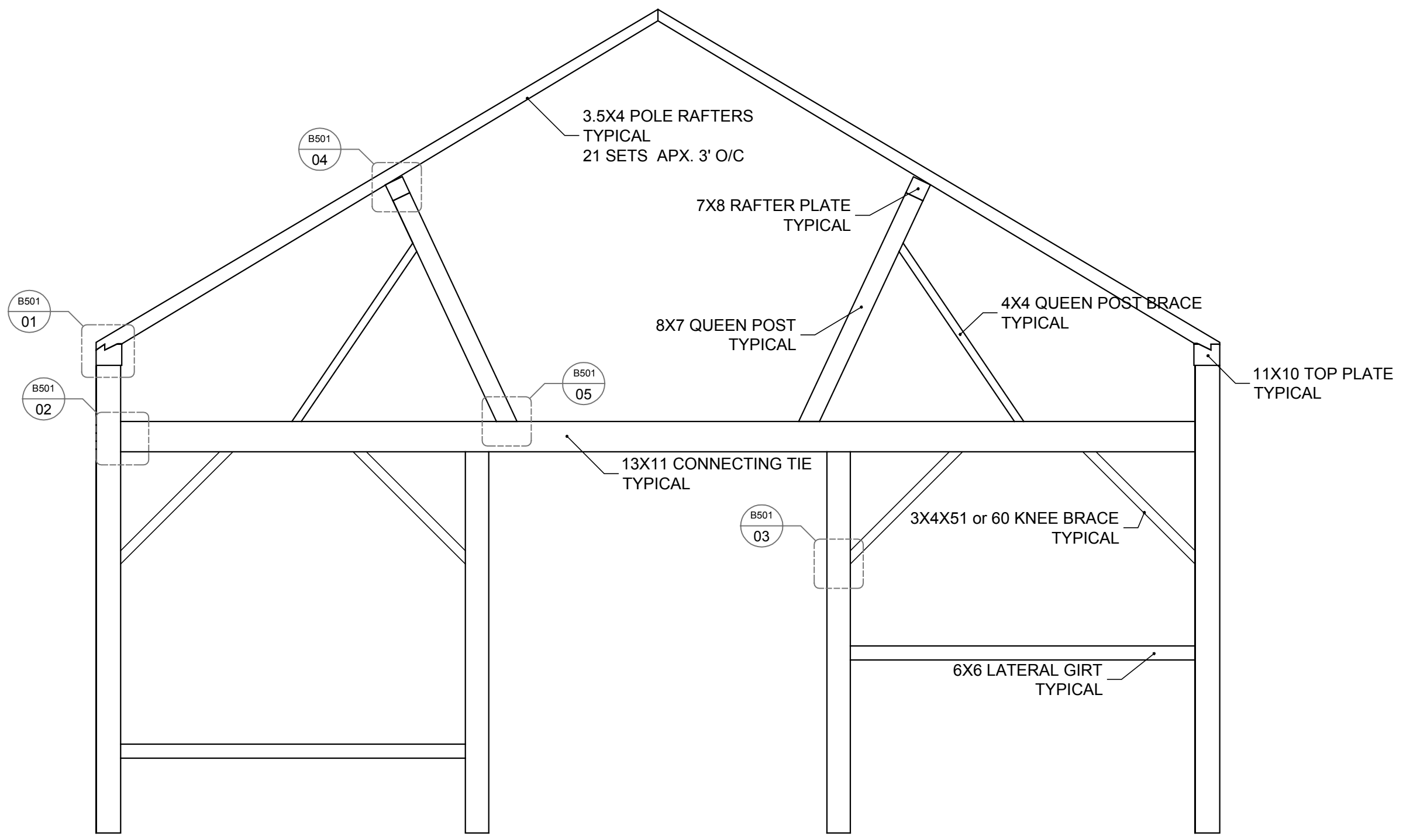
SIDEWALL AT GRID LINE 02 ELEVATION

SCALE: 3/16" = 1'

REV.	REVISION DESCRIPTION	DATE

REVISION
01
DATE: 180226

ELEVATIONS
B206
DESIGN BY: JJK
DRAWN BY: KMC



TYPICAL TIMBER DIMENSIONS
 SCALE: 1/4" = 1'

REV.	REVISION DESCRIPTION	DATE

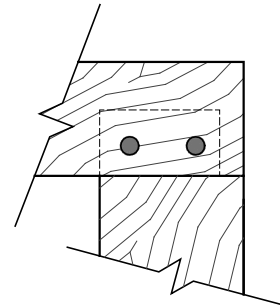
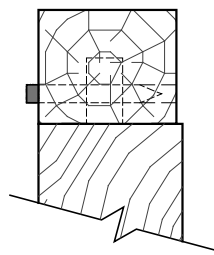
REVISION
01
DATE: 180226

DETAILS
B500
DESIGN BY: JJK
DRAWN BY: KMG

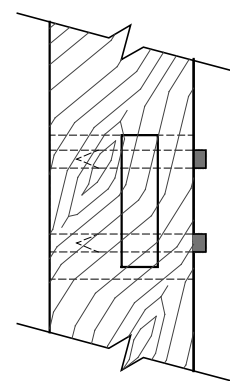
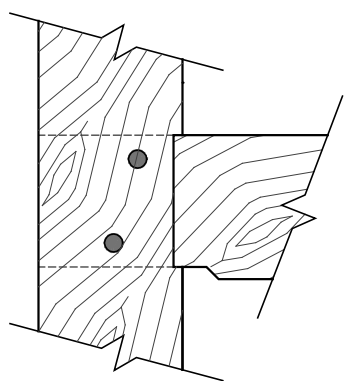
FACING BENT

FACING SIDEWALL

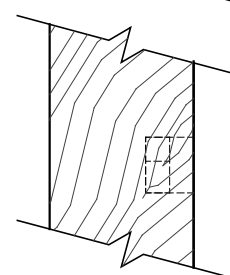
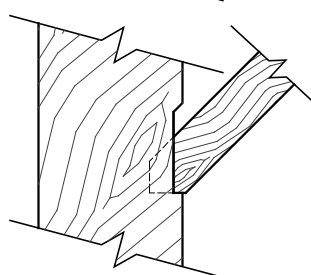
01 WALL POST TO TOP PLATE CONNECTION
 MORTISE AND TENON JOINT
 FASTENED WITH 1 1/2" OAK TRUNNEL
 TYPICAL



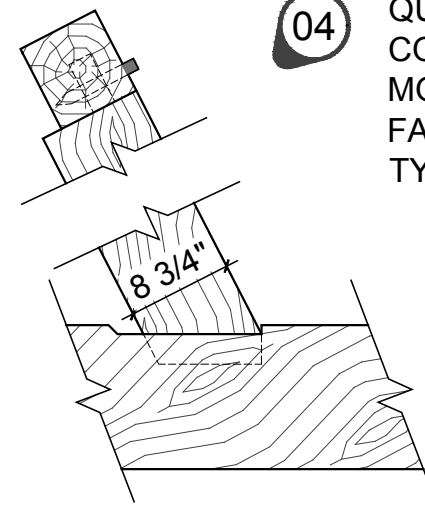
02 CONNECTING TIE TO WALL POST CONNECTION
 MORTISE AND TENON JOINT
 FASTENED WITH 1 1/2" OAK TRUNNEL
 TYPICAL
 SEE SCHEMATIC - B600



03 KNEE BRACE CONNECTION
 MORTISE AND TENON JOINT
 TYPICAL
 SEE SCHEMATIC - B600



04 QUEEN POST TO RAFTER PLATE CONNECTION
 MORTISE AND TENON JOINT
 FASTENED WITH 1" OAK TRUNNEL
 TYPICAL

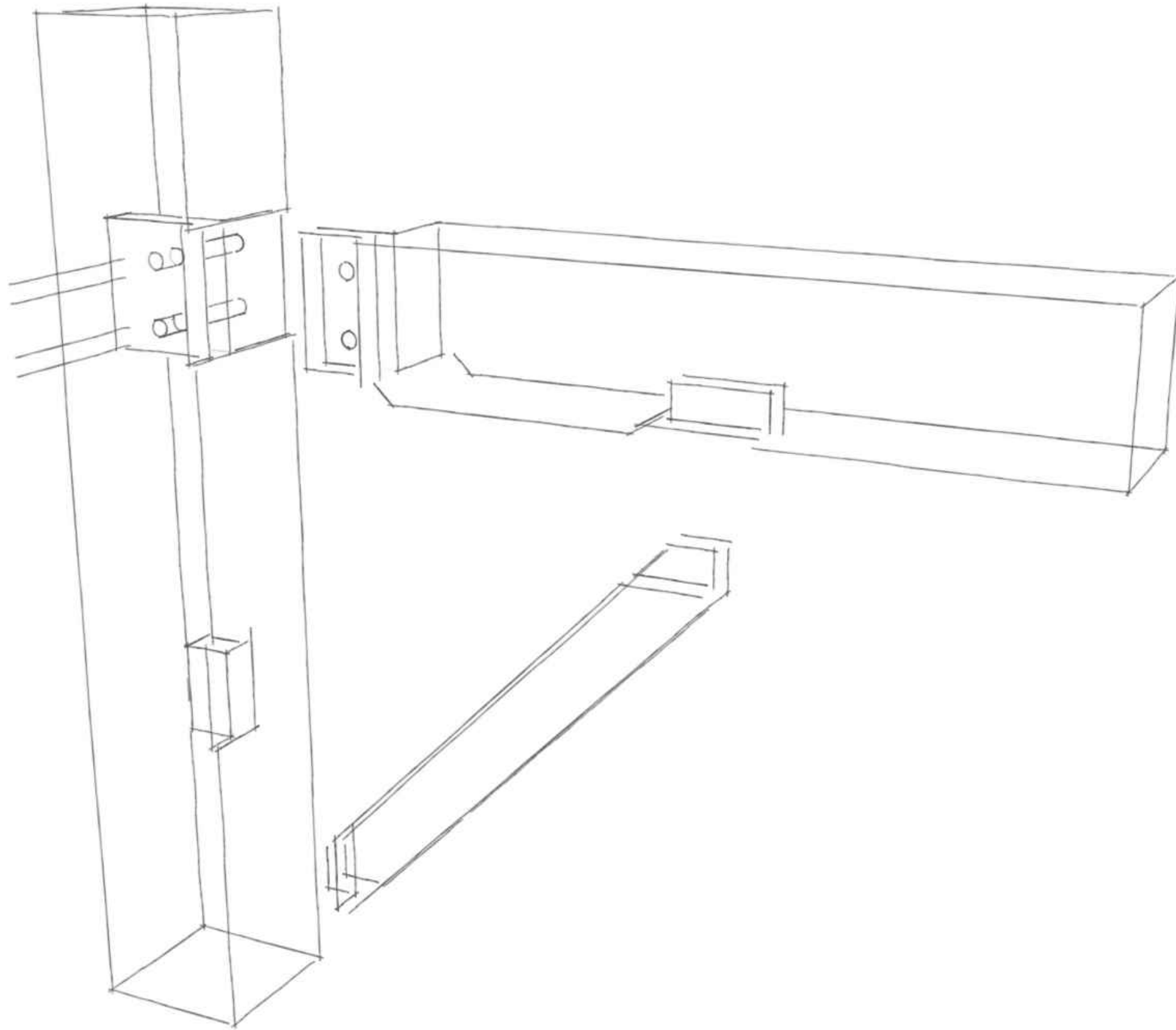


05 QUEEN POST TO CONNECTING TIE CONNECTION
 MORTISE AND TENON JOINT
 TYPICAL

REV.	REVISION DESCRIPTION	DATE

REVISION
01
DATE: 180226

DETAILS
B501
DESIGN BY: JJK
DRAWN BY: KMG



JOINERY SCHEMATIC
NOT TO SCALE

1381 STAYNER
 STAYNER, ONTARIO, CANADA

REV.	REVISION DESCRIPTION	DATE

REVISION
01
 DATE: 180226

SCHEDULES & DIAGRAMS
B600
 DESIGN BY: JJK
 DRAWN BY: KMG