

↑ 88 ft

→ 46 ft

👤 550 lb

Reaching higher
performance in
the safest way with
S³ EVO.

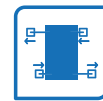
The optimal mix of performance
and simplicity.

CTE TRACCESS 270/88

88 ft of working height and 46 ft of horizontal outreach at full basket capacity (550 lbs).



550 lb
unrestricted
working area



Versatile
outrigger configuration



Doorway
access



CTE Connect
Management
System



Optional
winch with 505 lb
lifting capacity



S³ EVO

TECHNICAL DATA

- » Most versatile boom configuration with telescoping upper boom, articulating jib, and rotating basket
- » Sigma boom articulation
- » 640° non continuous turret rotation
- » Proportional simultaneous controls with smooth acceleration and deceleration
- » Control console in basket with operator safety switch
- » 2.4 GHz remote control with integrated display, home function, stabilization, and start/stop
- » Max gradeability approximately 36% or 16°
- » Aluminum basket available in single (2'6" x 2'3" x 3'7") or double (4'3" x 2'3" x 3'7") personnel sizes
- » Fiberglass bucket upgrade available
- » ± 90° hydraulic basket rotation
- » Hydraulically controlled basket leveling manually adjustable from the remote
- » Track width extends from 2'6" to 4'2"
- » Dual drive speed
- » Load cell consistently measures weight in basket
- » 4 outriggers with sensor contacts and outrigger covers
- » Stabilization management with S³ EVO with 4 independent stabilizers
- » Maneuvering acceleration and deceleration automatically electronically controlled based on working conditions
- » Rise and drive jib functionality - ability to drive with jib raised
- » Can be towed under CDL



watch the video

STRENX™
PERFORMANCE STEEL

IPAF

ANSI
American National Standards Institute

CTE TRACCESS 270/88



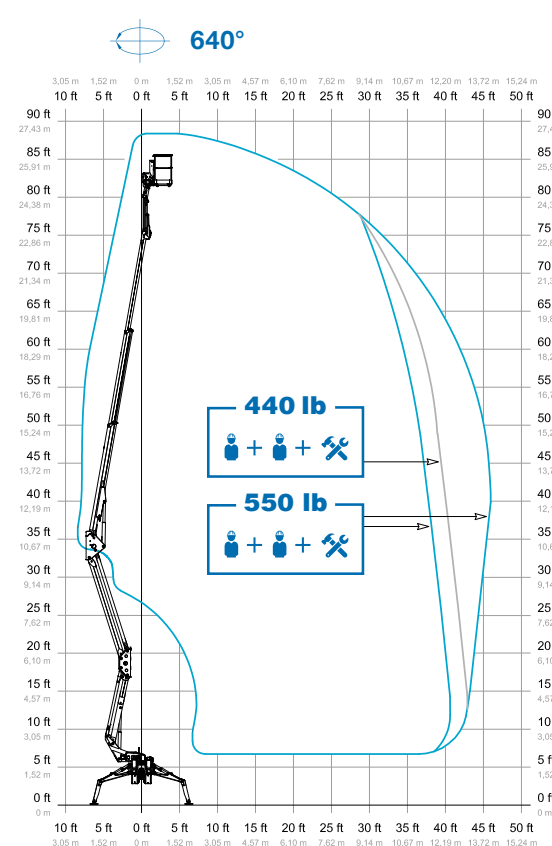
WHEELED,
EASILY REMOVABLE BASKET

48 V BATTERY KIT
FOR HYBRID USE

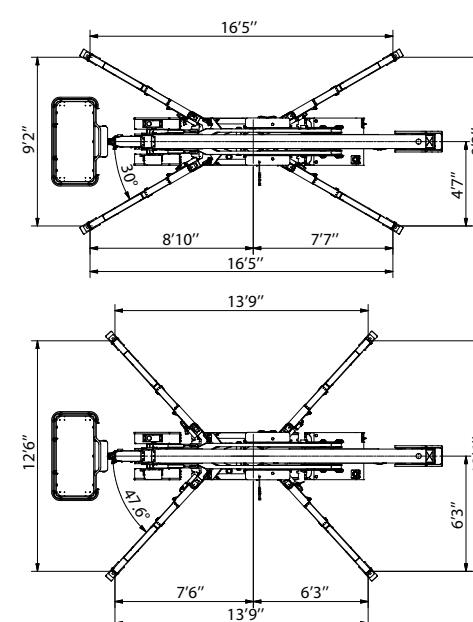
EASIER SELF-LOADING
OPERATIONS

VALVE BLOCK
PROTECTION KIT

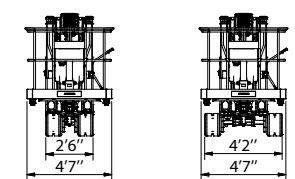
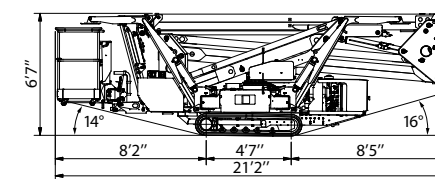
WORKING ENVELOPE



OUTRIGGER FOOTPRINT



DIMENSIONS



88* ft

4'3"x2'6"x3'6"

46* ft

9920 lb

550 lb

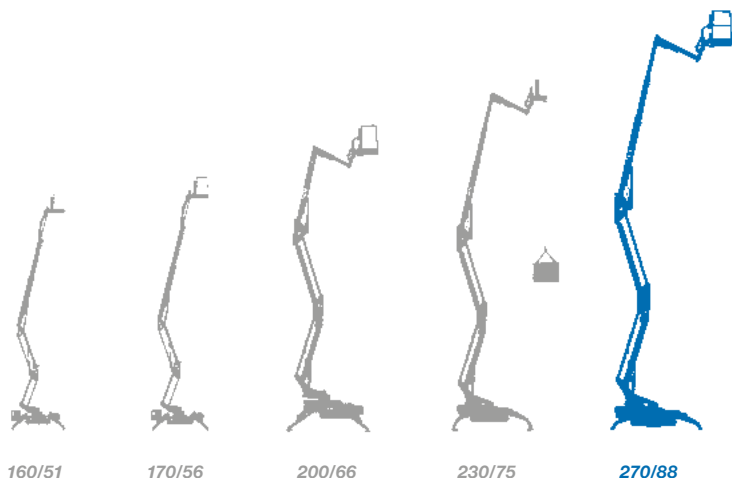
82* ft

* outreach and height max values and repeatability can change within ± 3% due to manufacturing variation and working condition.

CTE TRACCESS 270/88



Track-mounted range from 51 ft to 88 ft



- ★ Most versatile boom configuration
- ★ Most compact machines in class
- ★ Protected electrical & hydraulic systems
- ★ User-friendly, intuitive controls
- ★ Easy maintenance
- ★ Superior boom rigidity during operation
- ★ Choice of engines and options



We are CTE, a leading European equipment manufacturer with over 40 years of experience building high-value aerial products.



**After sales
assistance**



**Service &
spare parts**



**Scheduled
maintenance**



**On-site
assistance**



**Authorized
service centers**

“Work Becomes Easy” with innovative product features, timely assistance, professional guidance, and training. This commitment has been at the core of CTE’s operations since its inception, resulting in the distribution of over 17,000 platforms worldwide.



CTE North America Corporation
16 Tolland Turnpike, Willington, CT 06279
Ph. (860) 656-9077
www.ctelift-na.com - info@ctelift-na.com

CTE North America Corporation is part of
CTE SpA
Via Caproni, 7 - 38068 Rovereto TN - Italy
www.ctelift.com

