

↑ 75 ft

→ 39 ft

👤 440 lb

Versatile.
Compact.
Capable.



CTE TRACCESS 230/75

75 ft of working height and 39 ft of horizontal outreach at full basket capacity (440 lbs).



440 lb
unrestricted
working area



Optional
winch with 505 lb
lifting capacity



Versatile outrigger
configuration



CTE Connect
Management
System

TECHNICAL DATA

- » Most versatile boom configuration with telescoping upper boom, articulating jib, and rotating basket
- » Sigma boom articulation
- » 620° non continuous turret rotation
- » Proportional simultaneous controls with smooth acceleration and deceleration
- » Engine start and stop controls from basket
- » Aluminum basket available in single (2'6" x 2'3" x 3'7") or double (4'3" x 2'3" x 3'7") personnel sizes
- » Fiberglass bucket upgrade available
- » ± 90° hydraulic basket rotation
- » Load cell consistently measures weight in basket
- » Wireless remote control
- » Dual drive speed
- » Narrow outrigger configuration capability
- » Track width extends from 2'7" to 4'2"
- » 120 V electric motor for interior operation available
- » Hydraulic basket auto-leveling
- » 4 hydraulic outriggers with ground pressure sensors
- » Hour meter
- » 120 V AC EC electrical socket in the basket
- » Standard boom colors blue (RAL 5017) or white (RAL 9003)
- » Max gradeability approximately 31% or 16°
- » 4 stabilization areas with hydraulic placement
- » Can be towed under CDL

ENGINES

- » Kubota Z602 (2cyl) diesel engine (standard)
- » 48V 300 Ah Lithium battery



watch the video

STRENX[™]
PERFORMANCE STEEL

IPAF



CTE TRACCESS 230/75



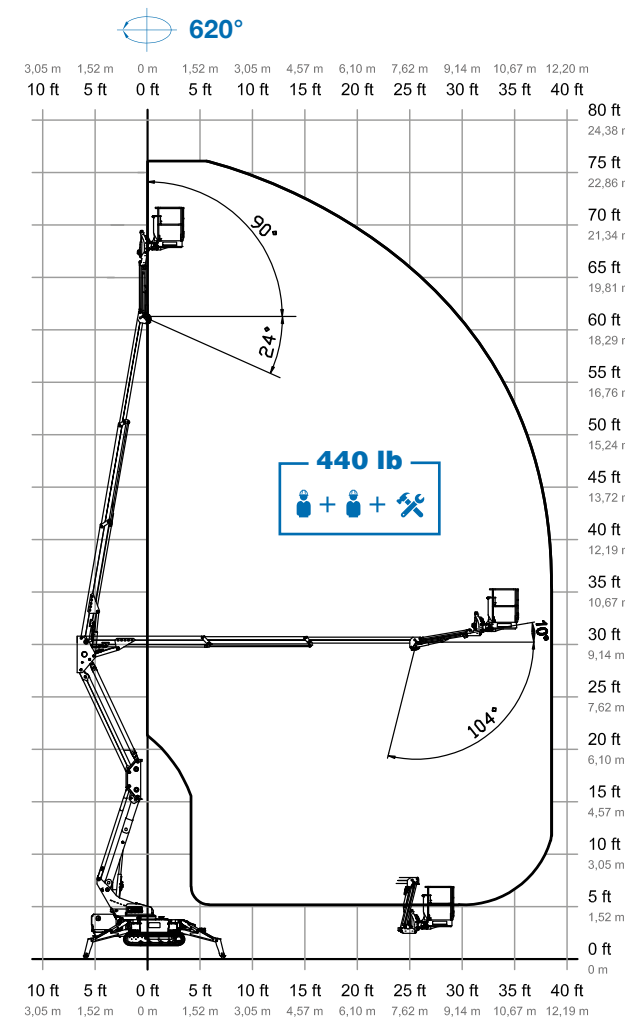
DOORWAY ACCESS

PERSONALIZED
OUTRIGGER PADS

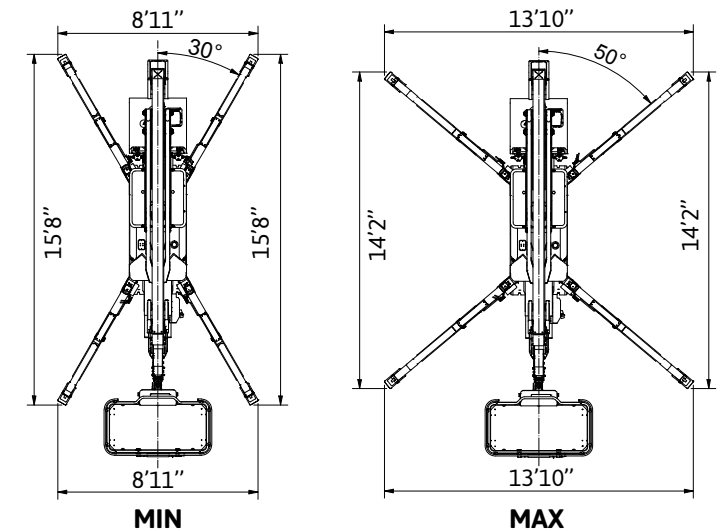
REMOTE CONTROL

ELECTRIC VERSION

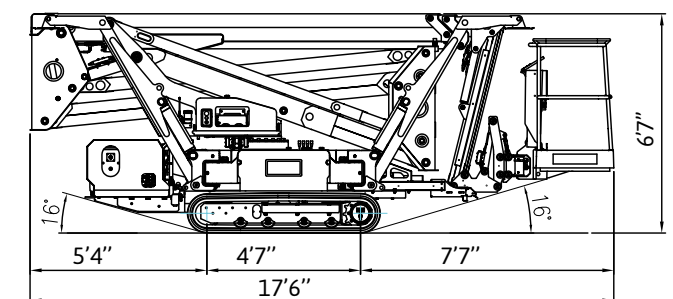
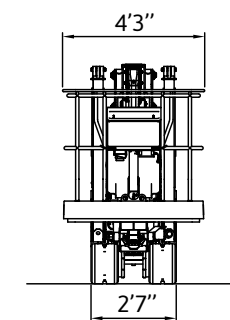
WORKING ENVELOPE



OUTRIGGER FOOTPRINT



DIMENSIONS

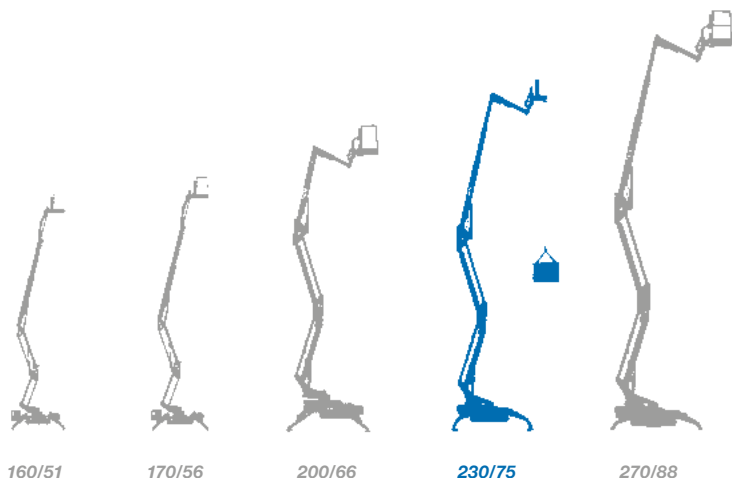


* outreach and height max values and repeatability can change within ± 3% due to manufacturing variation and working condition.

CTE TRACCESS 230/75



Track-mounted range from 51 ft to 88 ft



- ★ Most versatile boom configuration
- ★ Most compact machines in class
- ★ Protected electrical & hydraulic systems
- ★ User-friendly, intuitive controls
- ★ Easy maintenance
- ★ Superior boom rigidity during operation
- ★ Choice of engines and options



We are CTE, a leading European equipment manufacturer with over 40 years of experience building high-value aerial products.



**After sales
assistance**



**Service &
spare parts**



**Scheduled
maintenance**



**On-site
assistance**



**Authorized
service centers**

“Work Becomes Easy” with innovative product features, timely assistance, professional guidance, and training. This commitment has been at the core of CTE’s operations since its inception, resulting in the distribution of over 17,000 platforms worldwide.



CTE North America Corporation
16 Tolland Turnpike, Willington, CT 06279
Ph. (860) 656-9077
www.ctelift-na.com - info@ctelift-na.com

CTE North America Corporation is part of
CTE SpA
Via Caproni, 7 - 38068 Rovereto TN - Italy
www.ctelift.com

