

CTE TRACCESS 160/51

US

↑ 51 ft

→ 24 ft

👤 550 lb

Compact.
Innovative.
Strong.

CTE TRACCESS 160/51

51 ft of working height and 24 ft of horizontal outreach at full basket capacity (550 lbs).



550 lb unrestricted working area



Optional winch with 505 lb lifting capacity



CTE Connect Management System



Different power sources available

TECHNICAL DATA

- » Most versatile boom configuration with telescoping upper boom, articulating jib, and rotating basket
- » Sigma boom articulation
- » 400° non continuous turret rotation
- » Proportional simultaneous controls with smooth acceleration and deceleration
- » 2.4 GHz remote control with integrated display, home function, stabilization and start/stop
- » Aluminum basket available in single (2'6" x 2'3" x 3'7") or double (4'3" x 2'3" x 3'7") personnel sizes
- » Fiberglass bucket upgrade available
- » ± 90° hydraulic basket rotation
- » Basket leveling with electronic adjustment from remote controller
- » Engine start and stop controls from basket
- » Dual drive speed
- » Track width extends from 2'7" to 3'9"
- » CAN BUS electronic management system
- » 12V electric system
- » Load cell consistently measures weight in basket
- » 4 hydraulic outriggers with ground pressure sensors
- » Hour meter
- » 120 V AC EC electrical socket in the basket
- » Standard boom colors blue (RAL 5017) or white (RAL 9003)
- » Max gradeability approximately 25% or 12.7°
- » 120 V electric motor for interior operation available
- » Rise and drive jib functionality - ability to drive with jib raised
- » Automatic stabilization
- » Can be towed under CDL

ENGINES

- » Honda 11 Hp gas engine
- » Lombardini diesel engine (standard)
- » 48V Lithium battery



watch the video

STRENX[™]
PERFORMANCE STEEL

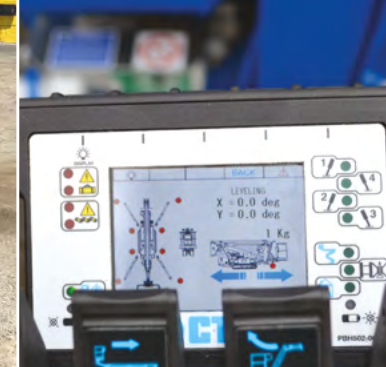
IPAF

ANSI
American National Standards Institute

CTE TRACCESS 160/51



WHEELED,
EASILY REMOVABLE BASKET



GRAPHIC DISPLAY

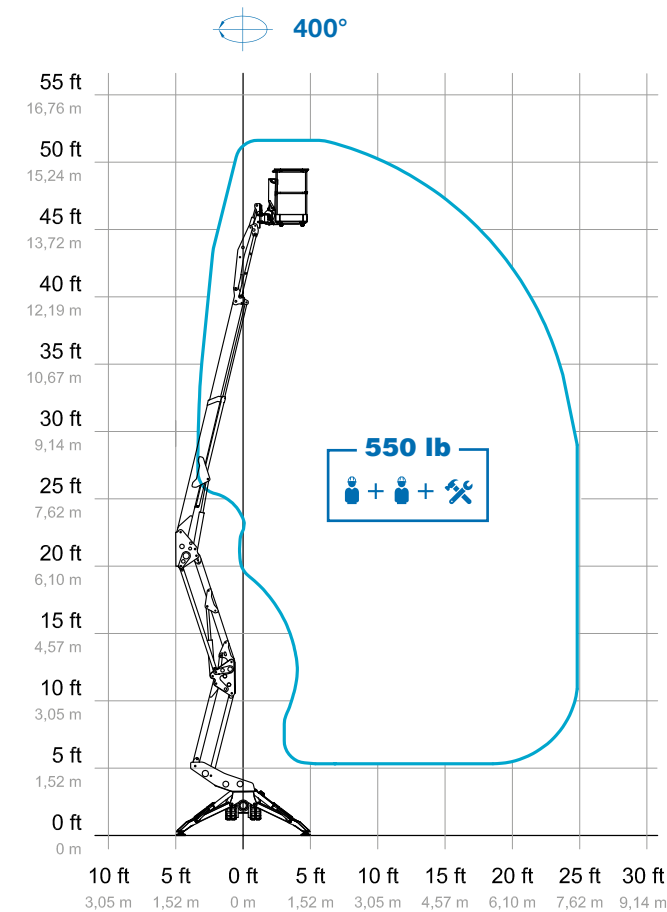


WIRELESS REMOTE CONTROL

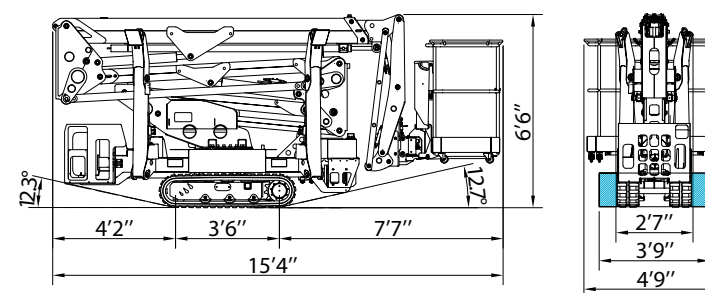


RISE AND DRIVE
JIB FUNCTIONALITY

WORKING ENVELOPE

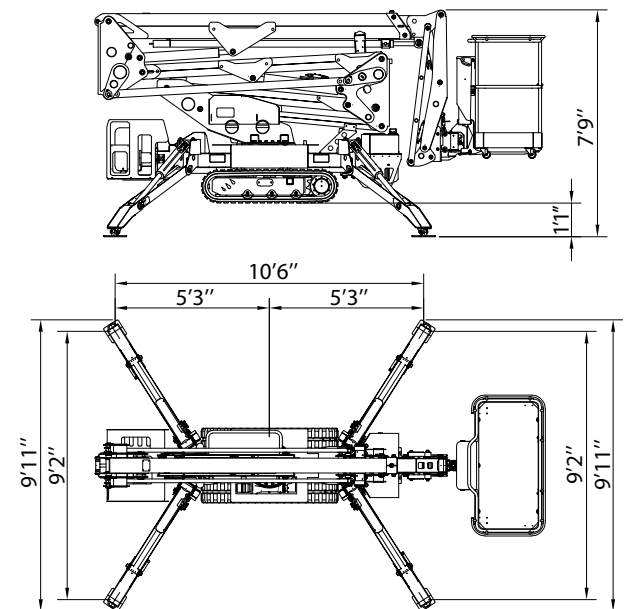


OUTRIGGER FOOTPRINT

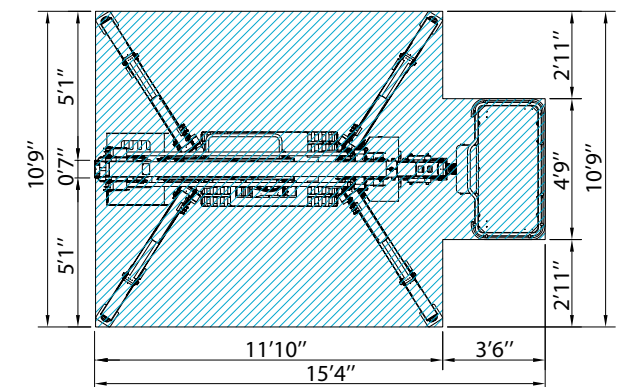


DIMENSIONS

MIN



MAX



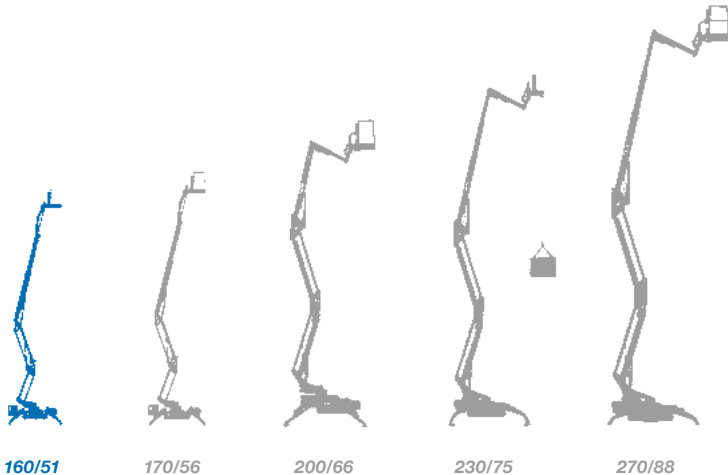
51* ft	4'7"x2'3"x3'7" ft
24* ft	5290 lb
550 lb	45* ft

* outreach and height max values and repeatability can change within ± 3% due to manufacturing variation and working condition.

CTE TRACCESS 160/51



Track-mounted range from 51 ft to 88 ft



- ★ Most versatile boom configuration
- ★ Most compact machines in class
- ★ Protected electrical & hydraulic systems
- ★ User-friendly, intuitive controls
- ★ Easy maintenance
- ★ Superior boom rigidity during operation
- ★ Choice of engines and options



We are CTE, a leading European equipment manufacturer with over 40 years of experience building high-value aerial products.



**After sales
assistance**



**Service &
spare parts**



**Scheduled
maintenance**



**On-site
assistance**



**Authorized
service centers**

“Work Becomes Easy” with innovative product features, timely assistance, professional guidance, and training. This commitment has been at the core of CTE’s operations since its inception, resulting in the distribution of over 17,000 platforms worldwide.



CTE North America Corporation
16 Tolland Turnpike, Willington, CT 06279
Ph. (860) 656-9077
www.ctelift-na.com - info@ctelift-na.com

CTE North America Corporation is part of
CTE SpA
Via Caproni, 7 - 38068 Rovereto TN - Italy
www.ctelift.com

