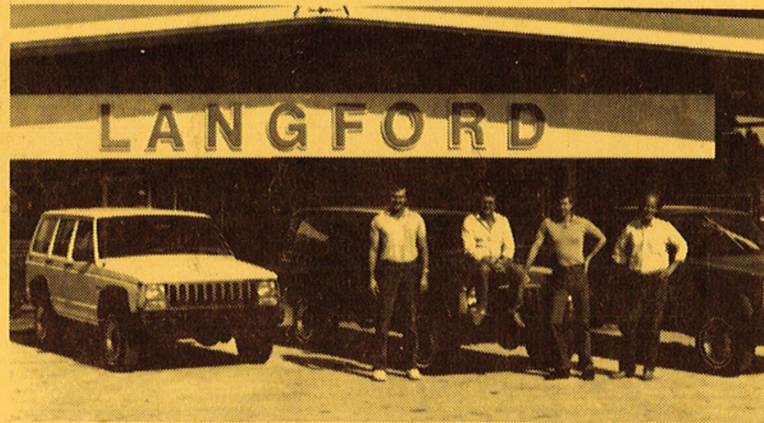




LANGFORD FORD, INC.

- Family Owned -
- Family Operated -



LANGFORD FORD SALES DEPARTMENT

For the lowest prices - due to low overhead -
And service by people who treat you right,
Come to Langford Ford.

Hwy. 29 So. LaBelle
675-1686 or 334-O514

Ya'll come to the

Town Tavern Bar



Open Swamp Cabbage Weekend

7:00 A.M. Til 2:00 A.M.

Liquors & Package

675-2581

Highway 80

1 Block West Of The Courthouse

Open 7 Days A Week

HOWDY PARTNERS!
Ya'all visit us at the
ACE Family Shopping Center!

Remember, **ACE**
is the place for:

- Ace Hardware
- B & J Automotive Supply
- Caloosa Insurance
- Radio Shack
- A-1 Locksmith
- J M Audio/Video



LaBelle ACE Center
350 Hwy. 80 W. LaBelle
675-2672



- Housewares
- Plumbing
- Hardware



Poulan
Chain Saws

- Garden Supply
- Paint
- Tools
- Sporting Goods



(813) 675-3248

**A-1
Locksmith
Service**

Licensed - Bonded - Insured

FRANK L. FOSTER, JR.
Owner

**Caloosa
Insurance
Services, Inc.**

Carl Swope,
Agent
Call
675-0897

Monday - Friday
7:30 - 6:00

Saturdays
8:00 - 5:00

**B & J
Automotive
Supply**

Call Bob at... 675-0229

*For All Your
Jewelry Needs...*

**LABELLE ACE
JEWELRY**

Custom Jewelry and Repairs
675-2672



**J M
Audio/Video**

675-2232



Record Albums
Tapes
Cassettes
T.V.'s - VCR's
Stereo Systems
Compact Disc
Players

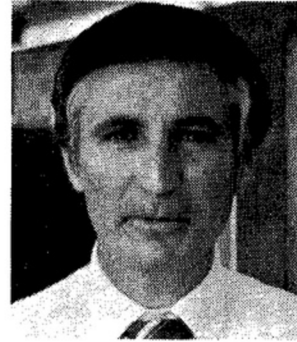
**Radio
Shack**

DEALER

**Computers And
Computer Software
Stereo Systems
Tape Recorders
Radios And Toys
And More. . .**
675-2672

1986

Swamp Cabbage Grand Marshal



A quiet man who diligently and patiently works toward greater community good is leading the 20th Annual Swamp Cabbage Festival Parade as grand marshal.

Darrell Harris, a longtime LaBelle resident, gives of his time and talents to various community service projects and organizations.

Harris has been involved with the LaBelle Little League program for 18 years, serving as league president, board member and coach.

He started the Junior-Pro Basketball program in LaBelle, and has guided it since its inception in the capacities of president, coach and referee. He also referees LaBelle Middle School basketball games.

The grand marshal is a member of the Rotary Club, the Hendry County Farm Bureau and is a guiding influence in the Quarterback Club, a booster organization for LaBelle's sports programs.

He also served two four year terms on the Hendry County School Board, two years as chairman.

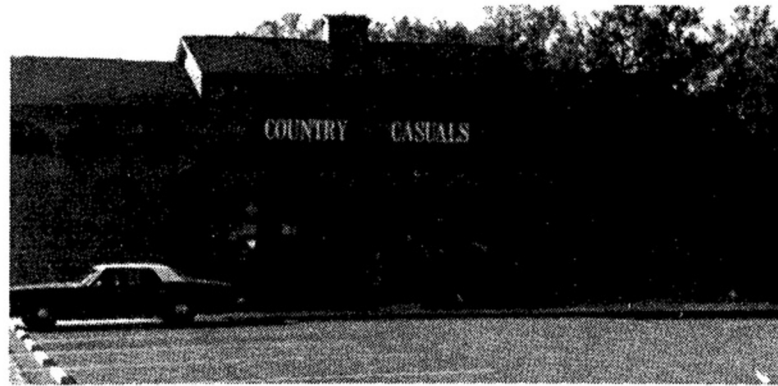
He formerly was a deacon of the First Baptist Church, where he also taught Sunday School for four years. He is now a member of the Church of God.

A LaBelle resident since 1952, Harris attended elementary and high school here, and more than distinguished himself with stellar performances on the basketball court.

A local boy who became a success in adulthood, Harris worked his way from bag boy to manager of the U Save Supermarket, a position he has held for the past 12 years.

In his capacity as manager, he earned the reputation of always being ready to help with community projects. That willingness to help earned him the 1985 Man of the Year Award from the Greater LaBelle Chamber of Commerce.

LaBelle is fortunate to claim such giving and generous citizens as Darrell Harris, and the Swamp Cabbage Festival Committee is proud to honor him as grand marshal.



COUNTRY CASUALS

Highway 80 - 2 Blocks West Of Courthouse

Open Saturday 9 A.M. - 6 P.M.

Complete Line Of Family Clothing

Boots For Everyone

Hundreds of Hand Crafted Country Gifts.

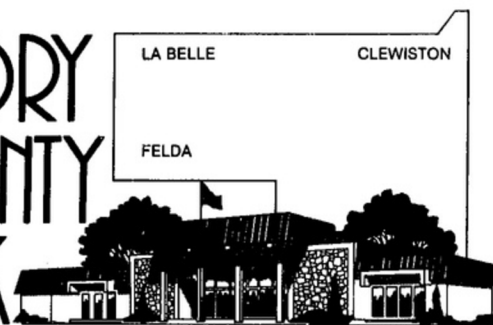
Antiques - Country Collectibles

Swamp Cabbage Headquarters:

*For Swamp Cabbage Skirts, Caps, Bumper Stickers,
Everything you need to make the Swamp Cabbage Festival
really Special!*



HENDRY COUNTY BANK



Customer Service - Priority One

Hendry County Bank was founded in 1963 by local business men, most of which still take an active interest in the administration of the Bank.

We at Hendry County Bank take pride in our community. We strive to keep that small town atmosphere for which LaBelle is noted. We invite you to come and visit us while you are in town to enjoy the festival.

The Directors, Officers and Staff want to welcome you all to LaBelle's 20th Annual Swamp Cabbage Festival. We want you to relax, enjoy yourselves, and take advantage of our hospitality.

*"The Friendly Folks"
At Hendry County Bank*

Main Office
155 Bridge Street
LaBelle, FL 33935
Phone 675-1313

Port LaBelle Office
4060 N.E. Eucalyptus Blvd.
Port LaBelle, FL 33935
Phone 675-4000

Schedule Of Events

SATURDAY, FEBRUARY 15, 1986

9:00 A.M.

SWAMP CABBAGE FESTIVAL GOLF TOURNAMENT - Oxbow Golf Course, Port LaBelle. Entry fee: \$35.00 which includes greens fee and cart.

3:30 P.M.

SCF Golf Tournament Awards Presentation - Oxbow Golf Course, Port LaBelle.

For more information: Skip Brownell, Golf Professional, Oxbow Golf Shop: (813) 675-0846

7:00 P.M.

SWAMP CABBAGE FESTIVAL BEAUTY CONTEST - Sponsored by: LaBelle Jaycees. \$3.00 - Adults; \$2.00 - Students. LaBelle High School Auditorium, Devils Garden Road.

9:00 P.M.

SWAMP CABBAGE FESTIVAL CORONATION BALL - Sponsored by: American Business Women's Association. Entertainment by: Gary Link and the Gary Link Trio. \$10.00 per person. Door prizes and refreshments available. LaBelle Civic Center, 400 Hickpoochee Avenue - Behind City Hall.

FRIDAY, FEBRUARY 21, 1986

8:45 A.M.

LABELLE ELEMENTARY SCHOOL MINI-PARADE - Public is invited to attend. Cub Scouts will provide games for children immediately following the parade. Square dancing and other activities.

7:00 P.M.

LABELLE SHRINE CLUB RODEO - Adults: \$5.00; Children: \$3.50 (Includes admission to dance). LaBelle Rodeo Grounds - Highway 29 South.

9:00 P.M.

LABELLE SHRINE CLUB DANCE - Entertainment provided. Refreshments available. LaBelle Rodeo Grounds - Highway 29 South.

7:30 P.M.

BINGO - Our Lady Queen of Heaven Parish Hall, South Bridge St.

8:00 P.M.

SWAMP CABBAGE FESTIVAL COUNTRY AND WESTERN DANCE - Entertainment by "Dillion Thomas", "Dixie Star", "The South", and more \$10.00 Single; \$20.00 Couple. LaBelle Civic Center, 400 Hickpoochee Avenue - Behind City Hall.

Schedule of events continued

SATURDAY, FEBRUARY 22, 1986

10:00 A.M.

SWAMP CABBAGE FESTIVAL PARADE - Bridge Street.

10:00 A.M.

QUILT SHOW - Sponsored by: LaBelle Community Women's Club
Highway 80 at Florida Street. Refreshments available. Drawing for
quilt at 4:00 p.m. - \$1.00 donation.

11:00 A.M.

CHICKEN AND DUMPLINGS DINNER - Sponsored by: Carlson
Memorial United Methodist Church - Campbell and Riverview St.
Adults: \$4.00; Children 10 and Under: \$2.50.

12:00 P.M.

SWAMP CABBAGE FESTIVAL PARK ACTIVITIES - Barron Park,
Bridge Street. Foods of all varieties; local and Indian arts and crafts;
continuous entertainment featuring dancers and bands. Among those
are: "Dillion Thomas", "Dixie Star", "The South", and more!
Park Dinners include: Quarterback Club Steak Dinner: \$7.00, Roast
Beef Sandwich Plate: \$4.00. Lions Club Rib Dinner: \$6.00. Catholic
Church Chicken Dinner: \$3.50 for 1/4 and \$4.50 for 1/2. Other
foods include hamburgers, hot dogs, sloppy joes, breads, fruits, and
much more.

1:00 P.M.

**SWAMP CABBAGE FESTIVAL AWARDS PRESENTATION AND
INTRODUCTION OF DIGNITARIES** - Gazabo area.

2:00 -

4:00 P.M.

LABELLE HIGH SCHOOL ALUMNI - Classes from 1923 -Present.
Orange juice and coffee served.

7:00 P.M.

GOSPEL SING - Presented by: First Baptist Church. Come hear the
"Journeyman Quartet".

7:00 P.M.

LABELLE SHRINE CLUB RODEO - Adults: \$5.00. Children: \$3.50
(Includes admission to dance). LaBelle Rodeo Grounds - Hwy. 29 S.

9:30 P.M.

LABELLE SHRINE CLUB DANCE - Entertainment provided.

Schedule of events continued

SUNDAY, FEBRUARY 23, 1986

5:45 A.M. OR

SAFE LIGHT -

2:00 P.M.

THIRD ANNUAL SWAMP CABBAGE FESTIVAL BASS TOURNAMENT - Sponsored by: LaBelle Ace Hardware; supervised by: LaBelle Bass Busters. Entry fee: \$40.00 per boat (2 fishermen per boat). Trophies and cash prizes awarded.

11:00 A.M.

CHICKEN DINNER - Sponsored by: LaBelle High School Band. Dinners: \$5.00 Adults and \$3.00 Children. Barron Park B-B-Q area.

12:00 P.M.

SWAMP CABBAGE FESTIVAL PARK ACTIVITIES - Barron Park, Bridge Street. Entertainment, food and fun continued from Saturday.

1:00 P.M.

FOURTH ANNUAL SWAMP STOMP - Sponsored by: LaBelle Branch of the First Bank of Clewiston. 5,000 meter run for men and women 14 and older. Start and finish at Belle Hatchee Marina in Riverbend Estates. Entry fee: \$7.00; T-shirts for all entrees. For additional information: Joe Shivers at (813)675-4242.

1:00 P.M.

LABELLE SHRINE CLUB RODEO - \$3.00 Adults; \$1.00 Children. LaBelle Rodeo Grounds; Highway 29 South.

2:00 P.M.

BABY CONTEST - Sponsored by: LaBelle Jaycees. All children between the ages of six months and four year are invited to compete. \$5.00 sponsor fee by parent or business. Barron Park - South tennis court.

LaBelle Swamp Cabbage Festival

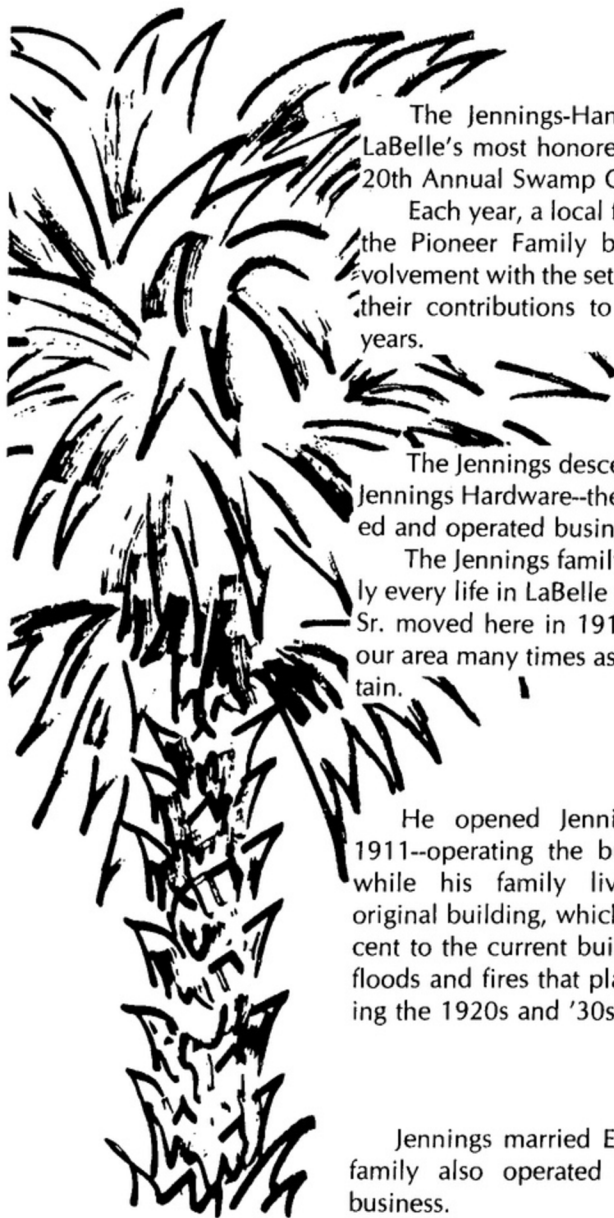
— Committee Members of 1986 —

Mike Power Chairman
Sherri Craichy Vice Chairman
Mary Clement Treasurer
Judy Kennington Corresponding Secretary
Allison Davis Recording Secretary

DIRECTORS

Lee J. Granims
Stan Wegscheid
Martha J. Puletti
Tim Tripp

1986 Pioneer Family. . .



The Jennings-Hand families will be LaBelle's most honored guests during the 20th Annual Swamp Cabbage Festival.

Each year, a local family is honored as the Pioneer Family because of their involvement with the settling of LaBelle, and their contributions to the area over the years.

The Jennings descendants still operate Jennings Hardware--the oldest family owned and operated business in LaBelle.

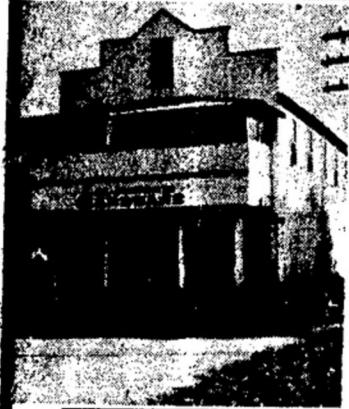
The Jennings family has touched nearly every life in LaBelle since L.M. Jennings Sr. moved here in 1910. Jennings visited our area many times as a dredge boat captain.

He opened Jennings Hardware in 1911--operating the business downstairs while his family lived upstairs. The original building, which was located adjacent to the current building, survived the floods and fires that plagued LaBelle during the 1920s and '30s.

Jennings married Erma Hand, whose family also operated an early LaBelle business.

L.M. Jennings died in 1931, leaving his son, L.M. Jennings Jr., and a son-in-law, in charge of the business. L.M. Jr. and Erma purchased their partner's share of the store in 1940 and opened L.M. Jennings Hardware.

In 1955, a new structure was built next to the old one, which is at the corner of Bridge Street and Fort Thompson Avenue. This time, living quarters were located in the rear of the store. The original hardware store is still used as a dwelling in the LaBelle area.



L.M. Jennings Jr. died in 1962, and the store has been operated by his daughter and son-in-law, Joann and W.G. Woosley, since 1964.

The family operation of the business is guaranteed to continue for years to come, as the Woosley's three sons, Tommy, Larry and Danny, still work in the store.

The Woosley's have three daughters, Patti Whysall, of Ohio; and Sherri Carpenter, of North Carolina. Mara Woosley, the youngest sibling of the family, is a student at LaBelle High School.

The Swamp Cabbage Festival Committee, and the people of LaBelle, are proud to honor the Jennings-Hand-Woosley families for the great contributions they have made for the betterment of our area.

*Our
Congratulations*

to the

City of LaBelle

on the occasion of the

20th

***Swamp Cabbage
Festival***

**Hendry County
Board of
Commissioners**

Chairman: Chuck Hall

Don Davis

Phillip Roland

Bobby McDaniel, Jr

Donald Pratt

Welcome. . .

**One and All to
LaBelle's
20th Annual
Swamp Cabbage
Festival**

We hope visitors during the
Annual Swamp Cabbage
Festival enjoy the hospitality
of our fine residents and the
natural beauty of our town.

**LaBelle City
Commissioners**

T.A. (Tommy) Smith, Mayor

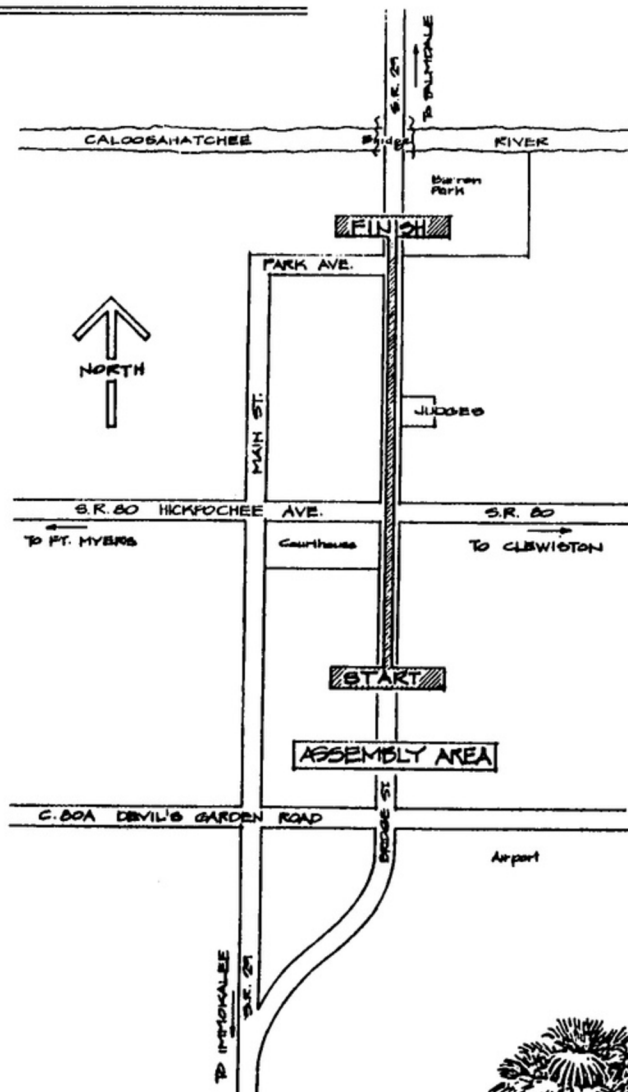
Easton Burchard
Clyde Aiken

Sharon Craichy
Paul Puletti

*Welcome to the 20th
Annual Swamp
Cabbage Festival.
The Hendry County
Sheriff's Department
hopes visitors during the
festival enjoy their stay.
You will find us working
hard to make sure that
residents and visitors alike
enjoy a ''Safe'' festival.
Sheriff Sermon Dyess*

and the
Hendry County's Sheriff's Department

1986 Parade Route



New



WHITE'S
"SERVICE"

is our most important
product

FURNITURE & APPLIANCES

Used



Sales and Appliance Service

- Stereos
- TVs
- Lawn Mowers
- Washers - Dryers
- Refrigerators
- Stoves
- Dining Room
- Living Room
- Bedroom Suites



Factory Authorized Service Center of GE,
Hotpoint, Maytag, Tappan, O'Keefe and Merrit



Where the two 29s meet
Hwy. 29 South LaBelle 675-0717

LABELLE CHRYSLER - PLYMOUTH

Ed Frierson, Owner
South Main Street LaBelle
Telephone: 675-2701
SALES AND SERVICE

CHRYSLER



**CHRYSLER
CORPORATION**
Authorized Dealer

Plymouth

For all your
sporting good needs



TASCO SPORTING GOODS

Team or Individual Needs

Locations in both
Immokalee & LaBelle
LaBelle Shopping Plaza LaBelle 675-1641

Sheltra's



— And —

Video Hunters Paradise

James and Sheila Sheltra, Owners

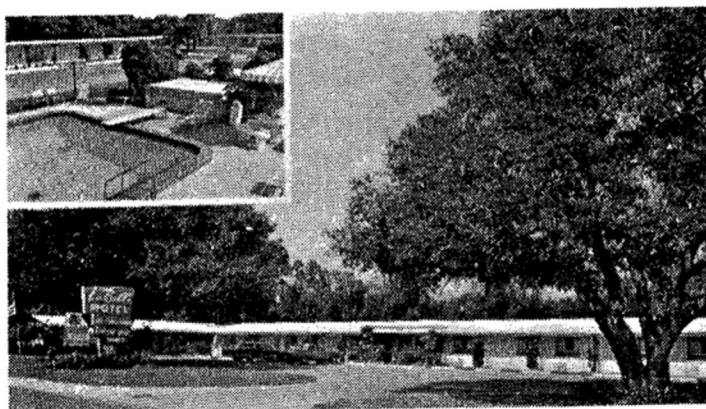
KELLY'S PLACE

233 Bridge Street
*Where Serving You
Is A Pleasure,
With Good Foods!*
Doug and Mavis

**When in LaBelle Enjoy
Our Fine Accomodations**

At the

LaBelle
MOTEL



Heated Pool Color TV
Air Conditioning Electric Heat

**Rent by the
Day, Week or Month
- Efficiencies Available**

**Highway 80 West LaBelle
Call 675-2971 For Reservations**



Sabal Palm

(Common Name)

Cabbage Tree

The Sabal Palm or cabbage tree, is the state tree of Florida. It grows throughout Florida; the tree is not damaged by cold in any part of the state and is well adapted for landscape use.

The cabbage tree attains a maximum height of 80 feet with a trunk diameter of two feet or less. During early life, the trunk is clothed with "boots" remaining from decayed leaf-stalks. As the tree grows older, these fall away, leaving a fairly smooth trunk. The leaves, which are fan-shaped and shiny, dark green in color, reach a maximum length of about five feet and a somewhat wider breadth.

The bud is harvested for food when the tree reaches from 12 to 20 feet. The approximately three-foot bud is swamp cabbage. Because of natural seeding, several cabbage trees will replace each one cut for food. The new trees will yield swamp cabbage in from three to five years.

SWAMP CABBAGE RECIPES

SWAMP CABBAGE WITH WHITE BACON - Rinse four hearts of palm in cold water and slice coarsely into a four-quart pot. Add boiling water to cover, simmer gently 5 to 10 minutes. If the cooking water is bitter, drain and add fresh boiling water. Dice 3 oz. white bacon or salt pork; saute until golden brown. Drain half of the fat and pour the remaining into pot. Cover and simmer until cabbage and pork melt together. Add salt and pepper to taste; then, stir in 1/2 cup evaporated milk and simmer an additional ten minutes. Serve with fish or meat.

MARINATED SWAMP CABBAGE - Slice the raw swamp cabbage and marinate it in your favorite sweet pickle juice.

SWAMP CABBAGE FRITTERS - Take cooked swamp cabbage, form into small patties, dip in flour, onion and egg batter and fry.

SHERRI'S SWAMP CABBAGE COCKTAIL - Mix one cup each orange sections, shredded coconut and diced raw swamp cabbage with one large can of fruit salad. Serve with your favorite fruit salad dressing.

BUTTERED HEARTS OF PALM - Slice two swamp cabbages into medium strips, barely cover with boiling water; add 1/2 tsp. salt and simmer 10 to 15 minutes. Drain water, add 2 tsp. butter and pepper to taste. Reheat and toss to coat with butter and seasoning. Serve with any meat.

RODRIQUEZ SECURITY PATROL

Private Security and Investigative Services

Bilingual Interpreters

STATE LICENSED

Notary Public

AND BONDED



*Investigative services, specializing
in private investigations, private security,
and security spot checks of residential,
business, and agricultural property.*

P.O. Box 152 307 Highway 80 West
Felda, FL 33930 Phone: 675-3511

MACS MALL



Shell Gas

Self Service ★ Diesel

— 28 Flavors Ice Cream —

★ Beer ★ Ice ★ Bread



Highway 29 South LaBelle



HENDRY GROVE SERVICE

A division of Hendry Irrigation, Inc.
P.O. BOX 846, 500 S. MAIN STREET
LABELLE, FLORIDA 33935

*Grove Management, Agronomical
Assistance, Grove Maintenance*



881 Devils Garden Road

LaBelle, FL 33935

813/675-0044

813/675-2734

LaBelle 675-1715 Clewiston 983-5255

ATTORNEY'S TITLE SERVICES, INC.

"Protecting your right to clear title"

**Abstracts - Escrow Service -
Real Estate Closings**

100 Yeomans Avenue LaBelle 675-1715

Cuts
Blowdry
Perms
Color
Highlighting
Braiding



CUTS 'N STUFF

Styling for the entire family

675-5990

571 So. Main LaBelle

**\$2.00
Off**

**COUPON: On any
Service or \$5.00 or
more in merchandise**

Offer expires March 31, 1986

Welcome to
Skeet and Sara's
Open Pit
Log Cabin Bar-B-Q



Highway 80 West
LaBelle, Florida

LaBelle



RIVER BEND ESTATES is a very exclusive subdivision consisting of 46 lots on 50 acres with almost 3,000 feet of lovely river front lots. River Bend Estates has a large recreation center, swimming pool, tennis court, shuffle boards, cookout places, boat landings with ramp and a 50 ft. dock on the river. Enjoy many other community amenities too, when you purchase a lot at River Bend Estates.

**Office Open
7 Days A Week
9 A.M. to 5 P.M.**

River Bend Drive comes in off State Road 29, 1 block north of river bridge and meanders easterly approximately 1 1/4 miles to . .

River Bend Estates

Phone (813) 675-3384 - 1073 River Bend Drive, LaBelle, Fla. 33935

*Congratulations on
Another Fine Festival!*

Judge Broward N. Parsons
Judge of Hendry County Court
and Past Parade Marshal

Serving LaBelle, Fort Myers and Immokalee



**A-1 GAS
SERVICE**

RESIDENTIAL - AGRICULTURAL - COMMERCIAL

Supplying propane for: Home, Business, Farm, Trucks
Service Specialists For:

Hot Water Heaters - Room Heaters - Stoves - Motor Fuel

Highway 29 North — LaBelle — 675-2775

2619 Katherine Street - Fort Myers, FL — 332-7422

The Home Of Good Queens

Harold P. Curtis Honey Co.

Breeders of Three Banded Italian Queens

Honey - Pollination - Bee Supplies



Have a free sample of Honey at our store
at the foot of the bridge, or
stop by our booth in the park.

P.O. Box 1012

LaBelle, FL 33935

Phone: 813-675-2187

*Compliments
of
Dr. & Mrs.
Randall T. Parrish, Jr.
And Staff*

**NOBLES PACKING
COMPANY**

Home of the famous "Keri Pak"

Located in Immokalee

Compliments of the Nobles Family

L.J. and Geraldine Nobles

David and Gaye Murrah

Jay III and Tracy Nobles

Skip and Mary Williams

**Congratulations LaBelle Jaycees and
the Swamp Cabbage Festival Committee**

Dr. Hal Haering

LaBelle Family Dental Practice

Office Hours: Monday - Friday 8:00 - 5:00

Evenings by appointment

Emergency 675-1400

Office 675-0019

Mickey's Pizza

Join us during Swamp Cabbage for. . .

Pizza - Spaghetti - Lasagne - Manicotti
Stuffed Shells - Salads - Soups -
- Sub Sandwiches -



Hours:

Open from 11 A.M. - 1 P.M.

Re-open 5 P.M.

Closed Sunday and Monday

EAT IN - TAKE OUT

551 Devil's Garden Road LaBelle 675-0321

Usave **Super Market**

HOURS:

Monday - Saturday 8:00 A.M. - 10:00 P.M.

Sundays 8:00 A.M. - 8:00 P.M.

Store Manager: Darrell Harris

Meat Manager: Bob Thackray

Produce Manager: Willard Bryant

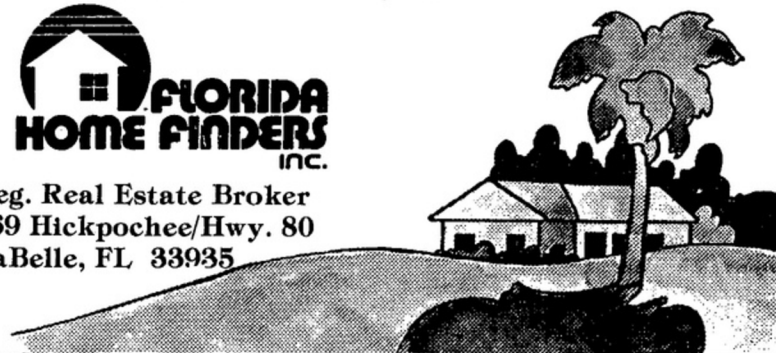
Bridge Street

LaBelle

813-675-3122
YOUR
FLORIDA
CONNECTION



Reg. Real Estate Broker
369 Hickpochee/Hwy. 80
LaBelle, FL 33935



LYONS

Printing
and
Office Supplies



LABELLE —
409 Hwy. 80 West

Serving all of LaBelle and
western Hendry County

CLEWISTON —
532 East Obispo

675-2970

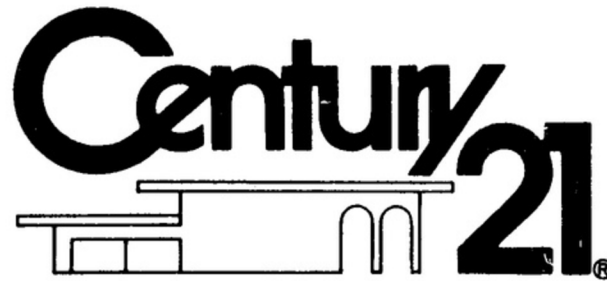
In Clewiston Call
983-6753

Office Supplies

Furniture

Quality Customized

Commercial Printing



BEA CLEAVES REAL ESTATE, INC.
BROKER

Richard T. Pfluge

Dorothy P. Pfluge

BROKER - OWNERS

COMPLETE . . .

REAL ESTATE SERVICE

Acreage, Groves, Homes,
Home Sites, Commercial, Industrial

PROPERTY MANAGEMENT

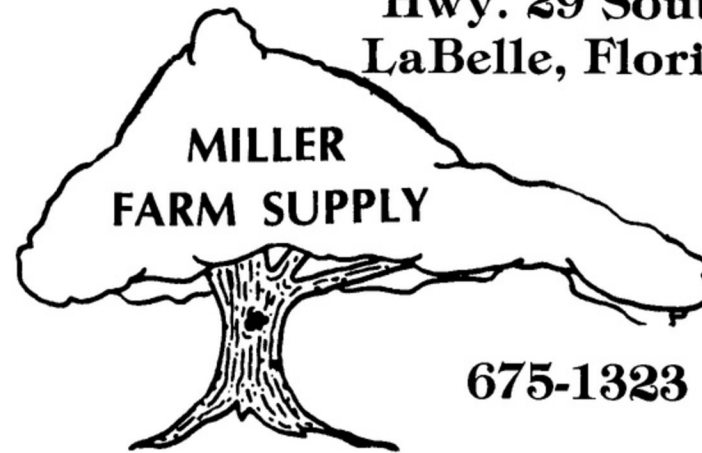
Rentals

Member of Century 21 nationwide referral system

Highway 80 - Next to City Hall
P.O. Box 818, LaBelle, Florida 33935
Phone - 813-675-1616

"Each office is independently owned and operated"

Hwy. 29 South
LaBelle, Florida



675-1323

Come to us for ALL your gardening needs

Seeds ★ Annual Plants ★ Pesticides

Fertilizer ★ Shrubs ★ Interior Foliage

**HOWARD
REALTY**

675-4300

Francis C. Howard, Broker

George Bauer, Associate

Trudy W. Murray, Associate

P.O. Box 40

LaBelle, Florida 33935



Welcome back to the Country

Homesites • Condominiums • Homes

VISIT OUR WELCOME CENTER

Located on Highway 80
3 miles East of LaBelle

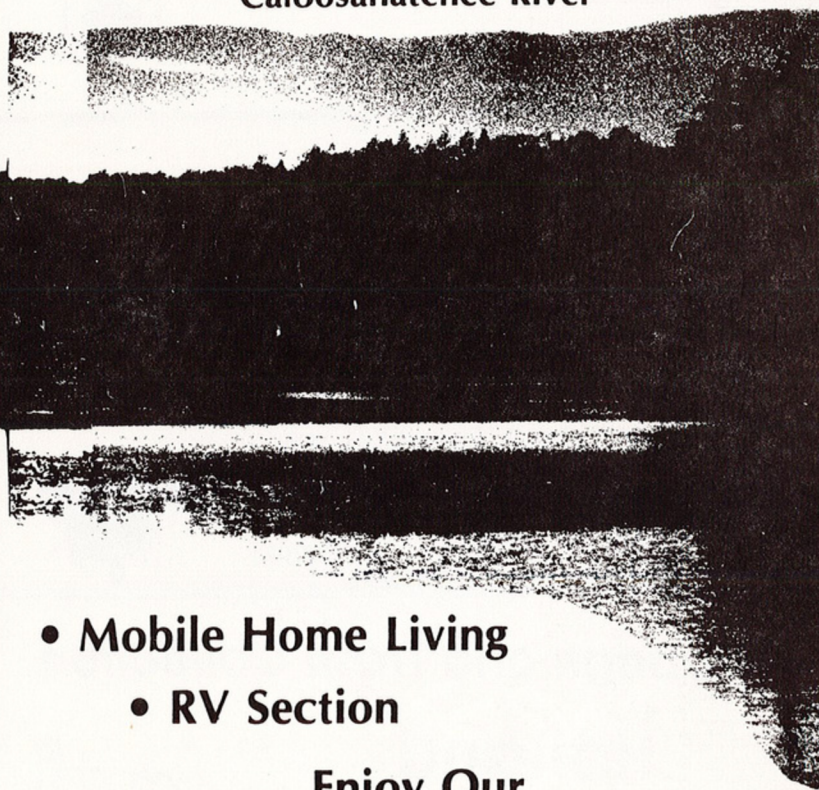


Villages of
Port LaBelle

(813) 675-1151
A General Development
Community



An Adult Mobile Home Community
Located on the Beautiful
Caloosahatchee River



- Mobile Home Living
- RV Section

Enjoy Our

Boat Ramp • Fishing Dock
Shuffle board • Miniature Golf Course

Highway 80 West - LaBelle - 813/675-2331



BILL KNIGHT

AGENT

84 West Hickpochee Avenue

Highway 80

LaBelle, FL 33935

OFFICE: (813) 675-1880

RES.: (813) 675-4941

STATE FARM

INSURANCE COMPANIES



Home Offices: Bloomington, Illinois



*LaBelle's Oldest and Finest
Eating Establishment*

FLORA & ELLA'S RESTAURANT

Owned and Operated by one of
LaBelle's Oldest Pioneer Families. . .
Seven Generations.

Flora, Ella, and Ida invite you to try
"Real Southern Cooking" and
their delicious homemade pies.

Bridge St.
LaBelle

675-2891

Garbage and Trash Collection

Holland Disposal

Office Hours:

8:30 - 12 1 - 5 p.m.

Monday - Friday

Call 675-2481 for service



PORTERFIELD OIL CO., INC.

Chevron Products



Hwy. 29 South • LaBelle • 675-0565



Gary & Mary Murphy, Owners

**G&M
TIRE**
PERSONALIZED SERVICE
SATISFACTION
GUARANTEED



Family Owned ★ Family Operated

★ Cars ★ Trucks ★ Farm ★ RV's

COMPLETE LINE OF TIRES

SEE US FOR: •Mufflers •Custom Exhausts
•Alignments on Motor Homes & Semi Tractors

BRAKES AND ALIGNMENTS

Specializing in Twin -I- Beam and 4X4 Suspensions
Domestic and Foreign Alignments

741 So. Bridge St.

LaBelle

675-3158

REAL ESTATE

- ★ *Acreage*
- ★ *Homesites*
- ★ *Homes*
- ★ *Riverfront*
- ★ *Groves*
- ★ *Commercial Property*
- ★ *Industrial Property*
- ★ *Businesses*

Stan Wegscheid

Reg. Real Estate Broker



Real Estate And Mobile Home Sales



MOBILE HOMES

- Fleetwood* ★
- Palm Harbor* ★
- Skyline* ★
- Redman* ★
- Nobility* ★
- Guerdon* ★

154 North Bridge Street, LaBelle, Florida 33935

(813) 675-2200

Toll Free 800-282-4438 Ext. 840

Saluting the 20th Annual Swamp Cabbage Festival

And Its Theme For 1986,

"LaBelle Our Heart, Florida Our Home, USA Our Honor"

PAST GRAND MARSHALS

1985 Sherri Craichy
1984 Thomas A. Smith
1983 Ida Lofton Kirby
1982 Stan Wegscheid
1981 Gary Lucia
1980 Broward Parsons
1979 Bette Foote
1978 Blitz Wegman
1977 Dr. Elizabeth Brungard
1976 Onley R. Hull
1975 R.E. Burchard
1974 Frankye Cobb Thomas
1973 John W. Ash, Sr.
1972 Jack Patton
1971 Judge R.M. Harris
1970 J.R. (Jack) Spratt
1969 W.T. (Bill) Maddox
1968 W.B. Barron
1967 Robert E. Byrd

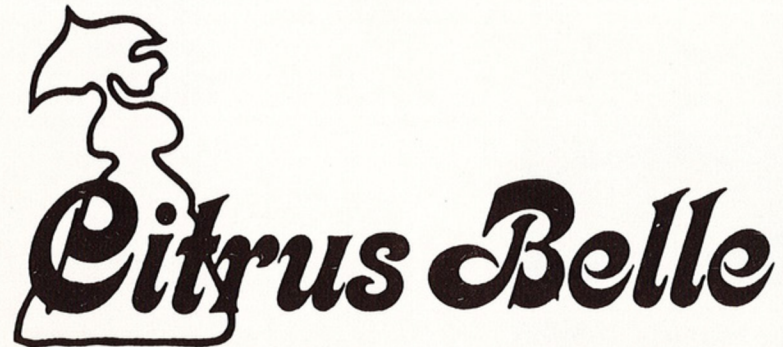
PAST FESTIVAL CHAIRMEN

1985 Tim Tripp
1984 Clinton Anderson
1983 Clinton Anderson
1982 Rodney Murray
1981 Jim Schneider
1980 Bill Sanders
1979 Jim Coddington
1978 Stan Wegscheid
1977 Bill Robinson
1976 Joe Spratt
1975 Thomas A. Smith
1974 Joseph H. Thomas
1973 Joseph H. Thomas
1972 Thomas A. Smith
1971 Thomas A. Smith
1970 Joseph H. Thomas
1969 Dale Small
1968 W.D. Howard
1967 Gary Lucia

PAST PIONEER FAMILIES

1985 The Miller Family
1984 The Daniels Family
1983 The Dyess Family
1982 The Hires Family
1981 Hill - Akin Family
1980 Hans Christian Family
1979 The Blount Family
1978 The Thigpen Family
1977 The Murray Family
1976 The Cason Family
1975 The Magill Family
1974 The Millard F. Yeomans Family
1973 The Francis A. Hendry Family
1972 The Thomas Howard Family
1971 The Washington Hall Family
1970 The W.T. Hull, Sr. Family
1969 Mrs. M.E. Forrey and
The Burke Family

**Compliments
of**



**Frozen Citrus
Concentrates
And Juices
Bulk Livestock Feed**

675-0336

An Equal Opportunity Employer



NO COMPROMISE

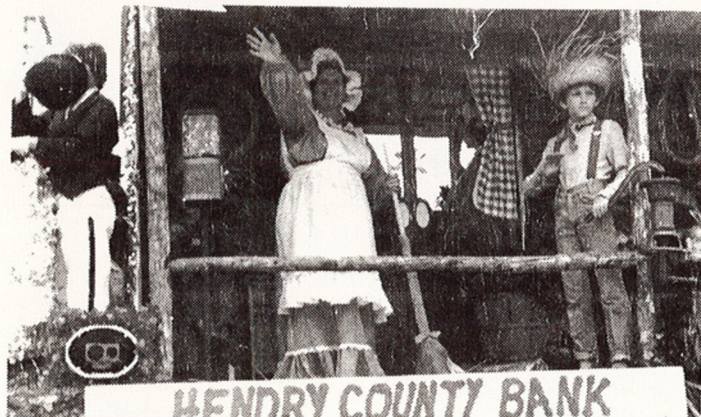
PRESCRIPTION GUARANTEE

There is a priceless ingredient in every prescription we fill. We care enough about every customer, to guarantee that every product we use, even in prescriptions for generic drugs, will be purchased from only BRAND NAME manufacturers of proven quality. Our standards allow no room for compromise.



**LaBelle
Pharmacie
LaBelle Plaza
675-0343**

Compliments of **Barney and Lois Barron**



HENDRY COUNTY BANK

CRACKER HOUSE CRAFTTIQUES



Located in the Log Cabin — Seven miles west of LaBelle on Highway 80
P.O. Box 1318 - LaBelle — (813) 675-1457
Fine Antiques, Collectibles, Glassware and Hand Crafted Items

Office Supplies & Machines • Printing
Rubber Stamps • Pick-up & Delivery

A-1 Office Supplies

Marty & Josie Martin

462 So. Bridge St.
LaBelle, FL 33935

813
675-2225



DON MEISTER
JIM ORLINSKI



Southern Farm Bureau LIFE INSURANCE COMPANY **FLA FARM BUREAU CASUALTY CO.**

Hendry County Bank Building

Auto — Home — Boat — Commercial — Life — Pension — Health

Federal Crop — Flood

Office: 675-2535
Home: 675-1634

P.O. Box 1365
LaBelle, FL 33935

THE ACTION IN LABELLE HAPPENS

AT THE

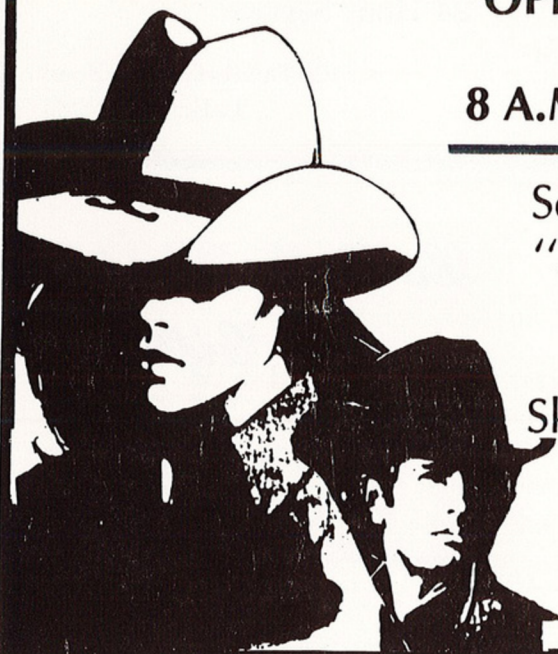
LIVE OAK LOUNGE

- Bar and Package Store
- Drive-In Window Service

OPEN DAILY
From
8 A.M. - 2 A.M.

So. Bridge St.
"Across from
the
LaBelle
Skating Rink"

LaBelle
675-9966



SCOTT WEGSCHEID
Associate

Office: (813) 675-2200



REAL ESTATE &

Licensed Broker

MOBILE HOME SALES

154 North Bridge Street, LaBelle, Florida 33935



Electrical Contracting Pump Service & Repair

Agricultural, Commercial and Residential
LICENSED and INSURED

24 Hour Service

CHUCK STOODT
Contractor

420 Devils Garden Road
LaBelle, Florida
675-4111



LaBelle Florist And Gifts

82 Main Street P.O. Box 866

LaBelle, Florida 33935

813/675-4800 - 334-6447

Luther C. Davis Cecil Akin

Pioneer Bank in the Everglades
Serving Hendry County
Since 1922



First Bank of Clewiston

24 - Hour
Automatic Teller Machine
Hwy. 80 West



LaBelle
675-4242



The LaBelle Branch - First Bank of Clewiston

Martha Lucia
Associate

Office: (813) 675-2200
Evenings: (813) 675-2677



COSTELLO REAL ESTATE

Licensed Broker

154 North Bridge Street, LaBelle, Florida 33935



Helen Williams
Owner

The Hair Hut

8290 Building
Highway 80 West
LaBelle, Florida
813-675-0121



Fine Women's Apparel

Dresses • Pants • Blouses
Skirts • Sweaters • Ship & Shore

LaBelle Dress Shop

80 North Main Street
675-3004

Open: Monday - Saturday - 10 - 5:30
Bobbie Cline and B. S. Cline, Owners

HENDRY COUNTY

Insurance Agency



Susan J. Yeomans, Agent
P.O. Box 400
250 S. Bridge St. - LaBelle, FL 33935
(813) 675-2411

Coleman, Higginbotham and Lindsey
Certified Public Accountants

Offices In:

LaBelle
88 South Main St.
LaBelle, FL 33935
675-3903

Immokalee
1402 New Market Road
Immokalee, FL 33934
657-3644

*Full Accounting Services — Income Tax Preparation
— Computer Applications*



Trading Post Discount Drugs



*Serving The Entire Community
For Better Health*

Medicaid and All Major Insurance Programs Accepted

HOURS: MONDAY - FRIDAY

9:00 A.M. - 6:00 P.M.

SATURDAY

9:00 A.M. - 2:00 P.M.

STORE 675-1111

Emergency 1-693-6988



HENDRY IRRIGATION, INC.
P.O. BOX 846, 500 S. MAIN ST.
LABELLE, FLORIDA 33935
(813) 675-3355

*Computerized Low Volume Irrigation
Design, Installation, Service, Parts*



**HATFIELD
MOBILE HOMES**



We Service What We Sell

Three Locations

LaBelle
675-3111

Clewiston
983-5171

Belle Glade
996-6073

LaBelle Chiropractic Clinic
363 Devils Garden Road
LaBelle, Florida 33935
(813) 675-3427



Serving Your Heavy
Equipment Needs
Since 1933

KELLY

TRACTOR CO.

Your Caterpillar Dealer

Miami - Clewiston
West Palm Beach - Fort Myers
(813) 675-2424



***LaBelle Fine
Catering , Inc.***

*No Party Too Small
Or Too Large*

Millie Halloran

P.O. BOX 1109
LABELLE, FL 33935

675-3594

PHONE (813) 675-2144



TRUCKS

1 AUTO

Sonny Southard
Owner

Route 29, Box 943
LaBelle, FL 33935



J.L. O'Ferrell
And Sons
HONEY Producer
of Package Bees
And Queens
Crop Pollination
(813) 675-0727
Bridge St. P.O. Box 221
LaBelle, Florida 33935



EMORY HOWARD **SEPTIC TANK CO.**

NEW INSTALLATIONS

★ Pump Outs ★ Grease Traps ★ Drain Fields

Call 675-0636 or 675-2061
Two miles West of Highway 29
Howard Road - Highway 78 - LaBelle

AIM

Engineering And Surveying



P.O. Box 195 - 23 Homestead Road
Lehigh Acres, Florida 33936

In LaBelle, Call us at 675-3696

In Lehigh, Call us at 369-7540

In Fort Myers, Call us at 332-4569

Compliments
of
Steve Gillaspie

LaBelle Garden Center



Butch & Evelyn Cooper, Owners

- *Hanging Baskets • Pottery*
- *Plants • Trees • Garden Supplies*
- *Landscaping & Landscape Plants*
- *Sprinkler Systems • Florist*

730 Devils Garden Rd. LaBelle 675-2140

*Hendry County's First Savings
and Loan Association*

FIRST FEDERAL
SAVINGS AND LOAN ASSOCIATION
OF HENDRY COUNTY
"1985 - Our 48th Anniversary of Service"

**Two Hendry County locations
to serve our customers:**

MAIN OFFICE:
205 W.C. Owen Ave.
983-6181



BRANCH OFFICE:
75 Bridge St.
675-0224

ESLIC



*Try our hot Croissant breakfast
and garden fresh salad bar!*

SPECIAL HOURS:
Swamp Cabbage Weekend Only!

Fri., Feb. 21st 6 a.m. - 1 a.m.
Sat., Feb. 22nd 6 a.m. - 1 a.m.
Sun., Feb. 23rd 6 a.m. - 11 p.m.



**COLONY
HELICOPTERS**

Specialists In Aquatic Weed Management

P.O. Box 1589
LaBelle, FL 33935

102 Missouri Street
(813) 675-2047

**GRANDMA'S
GROVE
RV PARK**



Shuffleboard, Fishing Ponds, Bathing & Laundry
*Facilities, all surrounded by
a beautiful orange grove.*

Highway 80

(813) 675-2567

LaBelle, Florida 33935

TWO NAMES YOU CAN TRUST

**Frank
King
Plumbing**

**Richard
Langley
Electric**

CALL 675-2796 or 675-0057



**LaBelle
Building Supply, Inc.
And
Ready-Mix Concrete**

• Lumber • Hardware • Blocks

"All Your Building Needs"

Highway 29 South - 870 South Main Street

P.O. Box 756 - LaBelle, Florida 33935

Phone: 675-0111



**LaBelle
Auto
Parts**

When the name is NAPA,
the standard is quality.

Machine Shop Service

OPEN: Mon. - Fri. 7 A.M. - 5:30 P.M.

Sat. 7 A.M. - 1 P.M.

**860 So. Main St. -
Hwy. 29 So. - LaBelle - 675-0046**

Port LaBelle Inn



LUXURIOUS ROOMS

HBO & Cable TV ■ AM-FM Radio ■ Air Conditioned

OXBOW CHAMPIONSHIP GOLF COURSE

#30 RANKED IN FLORIDA BY FLORIDA
GOLF WEEK MAGAZINE

Pro Shop ■ Practice Range

FINE DINING ■ COCKTAIL LOUNGE GIFT SHOP

TENNIS ■ HORSE BACK RIDING MARINA

Ice, Gas, Diesel, Supplies



Fort Myers Direct Line: 334-3903

One Oxbow Drive, Port LaBelle, FL — 675-4411

Hy. 80 - 30 miles East of Fort Myers

In Fla. 1-800-282-3375

LaBelle - Immokalee
657-3217

Davidson's Cleaners & Men's Formal Wear

A black and white photograph of a man in a tuxedo standing on a checkered floor. The man is wearing a dark tuxedo jacket, a white shirt with a bow tie, and a white boutonniere on his left lapel. He is smiling and looking towards the camera. The floor is made of large, light-colored square tiles. In the background, there is a staircase with a metal railing.

William R. McGill

Contract Janitorial Service
Residential and Commerical

675-2568

Licensed – Bonded – Insured

The City Of LaBelle. . .

The City of LaBelle, located on the banks of the Caloosahatchee River is a rural predominantly agricultural community bordered on the east by Port LaBelle, on the north by North LaBelle, on the west by Fort Denaud, and on the south by South LaBelle and Felda. The city of LaBelle and its surrounding area have a population of some 8,000 people.

LaBelle dates from the late 1800's and is at the intersection of State Roads 29 and 80. The presence of the two State Roads is one of the reasons LaBelle attracts new residents. The road network provides relatively easy access to many major cities in Central and South Florida as well as to points further north.

Perhaps more important than the physical location of LaBelle itself is the esthetic quality of the environment. The City lies on gently sloping land bordering the Caloosahatchee River. Natural land cover in the area is composed of oaks, sabal palms, pine flatwoods, and two small areas of forested wetlands. Much of the land in the community, including many parcels in the developed areas, remains in its natural state.

The Caloosahatchee River and its tributaries, the only local water resources large enough to sustain abundant fish life, contain bass, snook and catfish among others. Land animals include the raccoon, opossum, box turtle, red and grey squirrel. Birdlife consists primarily of the pine warbler, cardinal, mocking bird, screech owl, woodpecker and hawk with seasonal visits by the painted bunting, cedar waxwing and robin.

*Our compliments to the LaBelle Jaycees
and all of LaBelle on another successful
Swamp Cabbage Festival. . .*

GUTWEIN GROVES, INC.

Sears Road 675-1663 LaBelle

Leonard's K-9 Academy, Inc.



Protection Dogs - Schutzhund
Boarding - Training
Importers and Breeders of
Rottweilers and German Shepherds

"Have A Safe And Happy Swamp Cabbage Weekend"
Jeff and Denise Leonard and Staff



675-4304

BIG V RESTAURANT & MOTEL

Don Davis, Owner

Enjoy our motel rooms and efficiencies.
We have Cable TV, Room Phones & Swimming Pool
Our Restaurant has Home-Cooked Food.
Eat in or call for carry-out.

Hwy. 80 and Hall Street

**MOTEL
675-4422**

LaBelle

**RESTAURANT
675-2917**

One of LaBelle's Oldest
and
Most Dependable Businesses

Yeoman's Standard Service

Robt. Yeomans, Jr. - Owner

Located at the corner of
Hwy. 80 and Main

LaBelle

675-2751

Call
"The REAL People"
308 HWY 80 WEST
LABELLE, FLA



675-4330

**Real Estate Associates
of LaBelle, Inc., Broker**

Broker: Dee Scroggins Associates: Joe Thomas
George Swain, Eugene Abernathy, Jerry Cross,
Martha Rae Humphries, Dorothy Poling,
Jean Markley, Mary L. Mobley

Tucker & Williams Real Estate

Lawrence "Bubba" Schneider

ASSOCIATE

(813) 675-0368

P.O. Box 628

LaBelle, Florida 33935

(813) 675-0759 (EVE.)

356 Grant Street

LaBelle, FL 33935

GROVES — ACREAGE — HOMES — INVESTMENTS

**AMUSEMENT MACHINES • PINBALL
JUKE BOXES POOL TABLES**

 **Rogers' Music** 

First with the latest

2270 Prince St.

Ft. Myers, Florida

Phone 334-0472

**ALICO
INC.**

Citrus — Cattle — Timber

640 South Main Street

LaBelle, Florida

675-2966

Coca-Cola

Trade-mark ®

Coke is it!

For the Finest in Gasoline
and Petroleum Products. . .



Shell

Shell products perform

MERIT

PETROLEUM COMPANY

Bulk Deliveries

Farm – Commercial – Industrial

Hwy. 80

LaBelle

675-2301

SHELL SERVICE STATIONS

Jim's Shell	LaBelle	675-1707
Carl's Food Store	LaBelle	675-2538
Mac's Mall	LaBelle	675-0633
Ed's Store	Felda	675-0554
Ortona Country Store	Ortona	675-2754
Gene's Shell	Immokalee	657-2487
Strickland's Shell	Immokalee	657-2430
Lehigh Shell	Lehigh Acres	369-2707
Marco Island Shell	Marco Island	394-5339
Riverdale Shell	Ft. Myers	694-4209
East End Service Mart	Okeechobee	763-7701
Palmdale Shell	Palmdale	675-9958
Super Stop Food Store	Clewiston	983-2791
K & J Food Store	Clewiston	983-5452
Pioneer Shell	Pioneer Plantation	983-5536



Karen's Shoe Corral

"Shoes and
boots for
the entire
family"

573 So. Main
Hwy. 29 S.
LaBelle, FL
675-3550

SERVIS[®]TAR

HARDWARE - LUMBER - HOME CENTERS

We can help.

L.M. JENNINGS HARDWARE

Family Owned And Operated Since
— 1911 —

315 Bridge Street
LaBelle

PH: 675-2311

**FLEX
BON
PAINTS**

Florida Formula

LaBelle. . . French For Beautiful

LaBelle, French for "the beautiful", was named for three of pioneer settler Captain Francis A. Hendry's daughters, Laura, Lee and Belle, all now deceased. With its spreading live oaks and the beauty of the nearby Caloosahatchee River, many...especially those weary of the hustle and bustle of the big city...accept the fable that a French traveler, perhaps Pierre Denaud for whom Fort Denaud was named, saw the area and its natural beauty and exclaimed, "C'est LaBelle!"

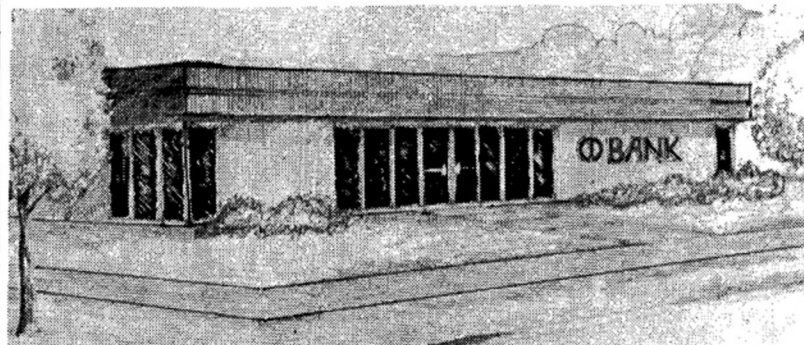
The LaBelle trading area has a population of some 8,000 with more than one quarter in the City of LaBelle. LaBelle operates under the commission form of city government with the five commissioners at large being elected for staggered two year terms.

Port LaBelle, immediately east of LaBelle, may quadruple the local population in less than 20 years. LaBelle and Port LaBelle, aware that much of the area's charm is friendly, warm small-town atmosphere, are planning for a future that retains this relaxed pace yet enjoys the advantages that go with being a more heavily populated area.

The people of LaBelle, native and newcomer alike, are proud of their hometown and the factors which make LaBelle so special. LaBelle, truly the "City Beautiful", invites you to share that unique and deceptively quiet lifestyle known as Southern living.

C.N.B.

LaBelle Banking Center



17 N. Lee St. — 675-2300 — LaBelle

Hendry County's only locally
Owned and Operated National Bank

SERVICES AVAILABLE

- | | |
|--|--|
| ★ Checking Accounts | ★ Automobile Loans |
| ★ Savings Accounts | ★ Tax Depositing Service
For Business |
| ★ Christmas Club | ★ Residential Mortgage Loans |
| ★ Bank-by-Mail | ★ Safe Deposit Boxes |
| ★ Direct Deposit of Social
Security and Retirement Checks | ★ Drive-In-Window Service |
| ★ 24 Hour Night Depository | ★ IN CLUB |
| ★ Personal Money Orders | ★ Wire Transfer |
| ★ Travelers Checks | ★ Collection Service |
| ★ Commercial Loans | ★ Individual Retirement Accounts |
| ★ Commercial Mortgage | ★ Discount Brokerage |
| ★ Collateral Loans | ★ Mastercard and Visa |
| ★ Personal Loans | |

MEMBER FDIC

Equal Housing Lender

VIDEOTECH

51 South Lee Street
LaBelle Plaza
LaBelle, Florida 33935 813/675-4443

*Look For Our Souvenir Issue
February 19, 1986*

Compliments Of

Caloosa Belle

*LaBelle's Hometown Newspaper
Since 1922*

Published each Wednesday
675-2541

P.O. Box 518

LaBelle, Florida 33935

Subscription rate: \$16.00 year/\$9.00 six months

Hendry County Real Estate

Wayne E. Rowlee, Registered Real Estate Broker

For All Your Real Estate Needs

Associates:

Don Davis

Pam Dunmire

Nancy Hingson

Kay Piecuch

Linda Thompson

**Highway 80 West and Hardee St. - LaBelle
(Behind the Log Cabin Restaurant)
(813) 675-2718**

Irvin M. Kennedy, Broker
Carolyn Kennedy, Broker
Sue Denning, Broker

ASSOCIATES:
Bob Chandler
Ken Burkhardt
Barbara O'Bannon
Ina Englebright
Frankie Burke
Sara Maddox

HOMES MOBILE HOMES LOTS ACREAGE
RANCHES GROVES FARMLAND
INVESTMENTS BUSINESSES

KENNEDY

real estate

Of LaBelle, Inc.

411 Highway 80 West - LaBelle
(813) 675-1717

Broadcasting Swamp Cabbage
Festival Activities Live
As They Happen!



WVHG STEREO FM
92.1 MHz

"Your Official Swamp Cabbage
Festival Radio Station"

P.O. Box 399
LaBelle, Florida 33935

Highway 29 South
(813) 675-1881

Valpe's

*Food,
Dancing
& Spirits*

Highway 29
1 Mile N of Bridge
On the County Line

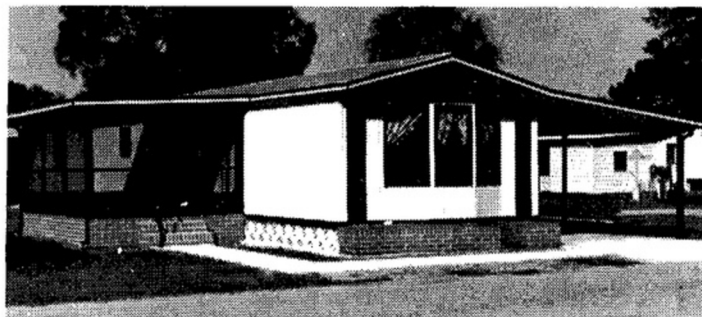
Thursday & Friday
Saturday

11:00 A.M. - Till
8:00 A.M. - Till

Open Seven Days A Week
675-4677

Rhodes Aluminum

Screen Enclosures, Carports, Awnings, Utility Rooms
CONCRETE: Raised Patios, Driveways
Complete Aluminum and Concrete Packages



CURT RHODES
675-4627 Shop
675-3213 After 5 P.M.

FORMER FESTIVAL QUEENS

- 1985 Miss Lori James
- 1984 Mrs. Jeri Carver Merritt
- 1983 Mrs. Leah Ann Langley Williams
- 1982 Miss Kim Dunaway
- 1981 Miss Yvonne McGee
- 1980 Mrs. Rena Ireland Di Pofi
- 1979 Miss Cynthia Mott
- 1978 Mrs. Chris Lehman Robbins
- 1977 Mrs. Sonja Burchard Curtis
- 1976 Miss Sheryl Wooten
- 1975 Miss Danna Thompson
- 1974 Miss Terri Prescott
- 1973 Mrs. Gaye Nobles Murrah
- 1972 Mrs. Cindi Bass Sanders
- 1971 Mrs. Sherri Woosley Carpenter
- 1970 Mrs. Laura Miller Nolte
- 1969 Mrs. Judy Burgess Puletti
- 1968 Mrs. Debra Cordell Maddox
- 1967 Mrs. Linda Stilwell Liddiard

Swamp Cabbage Festival

LaBelle's Swamp Cabbage Festival began as the dream of the newly formed LaBelle Jaycees in 1966. The Jaycees wanted a project during U.S. Jaycee Week that would foster community and encourage community cooperation...a local celebration.

Noticing the area's abundance of Sabal Palms, or as they are called locally "cabbage palms", and remembering the tree's importance to early settlers as both food and building material, the Jaycees decided to promote a festival honoring the Sabal Palm and featuring that local delicacy known as "Hearts of Palm" in gourmet circles. The Jaycees thought that "Swamp Cabbage Festival" would be an intriguing name for LaBelle's community celebration.

LaBelle's Jaycees began planning an old-fashioned pioneer festival honoring Florida's State Tree, the Sabal Palm. The idea caught the community's imagination. Soon, all LaBelle was planning for the first Swamp Cabbage Festival.

The first festival was held during U.S. Jaycee Week in January 1967; it was a success. A permanent Swamp Cabbage Festival Committee headed by the Jaycees was set up with representatives from LaBelle's church, school and community organizations. The committee, which has since been incorporated as LaBelle Swamp Cabbage Festival, Inc., has successfully coordinated the festival activities for over a decade. The committee changed the date of LaBelle's Swamp Cabbage Festival to the last full weekend in February.

The Swamp Cabbage Festival Parade, held on Saturday of the festival weekend, is one of the festival highlights. Most of the floats in the parade are "homegrown" and decorated with Sabal Palm fronds. Community groups, families and individuals vie with each other to see who can build the most unusual and most beautiful floats.

A Country Music Show is one of the popular events during Swamp Cabbage Festival weekend. Some of the popular country music stars who have entertained the festival crowds are Mel Tillis, Jeannie C. Riley, Del Reaves, Charley McCoy and Mickey Gilley.

The Swamp Cabbage Festival Rodeo is also one of the festival's major events. Rodeo performers from all over the country come to LaBelle to compete for prizes. The 4-H Field Day, also held at the Rodeo Arena, draws youth from the area who compete in riding events.

There are so many events taking place in LaBelle during Swamp Cabbage Festival Weekend that it is almost impossible to take them all in. Many people have difficulty in choosing which of the festival events to go to, and they keep coming back to LaBelle year after year and experiencing something new at each Swamp Cabbage Festival.

The Swamp Cabbage Festival Committee and the people of LaBelle would like to thank you for coming to this year's festival and would like to invite you back next year. So, mark the last full weekend in February on your calendar and make a visit to LaBelle's Swamp Cabbage Festival an annual event.

George Briede and Joe Thomas

The Jaycee Creed

We Believe

That faith in God gives meaning
and purpose to human life

That the brotherhood of man transcends
the sovereignty of nations.

That economic justice can best be won
by free men through free enterprise

That government should be of laws
rather than of men.

That earth's great treasure lies in
human personality; and

That service to humanity is the best
work of life.

Red Blum



Own a Piece
of
LaBelle

We know you'll love it!

★ Sharon S. Craichy
Broker/Owner

ASSOCIATES:

- | | |
|------------------------|----------------------------|
| ★ Julie C. Peeples | ★ K.C. Craichy |
| ★ Joan C. Cavanagh | ★ Larry L. Toole |
| ★ Diane M. Ange | ★ G. David Murrah |
| ★ Nancy L. Hendrickson | ★ C. Wesley O'Ferrell |
| ★ John A. Craichy | ★ James (Jimmy) R. Peeples |

(813) 675-2650

Located in Hendry County Bank Building
P.O. Box 636
LaBelle, FL 33935

Swamp Cabbage Weekend:

Open — 8:00 A.M. - 2:00 A.M. Friday and Saturday
Band Hours — 9:00 P.M. - 2:00 A.M.
1:00 - 4:00 P.M. - Saturday Afternoon

Braswell Brothers

*Florida State Country Music Associations
Band Of The Year. . .*



LONG BRANCH BAR

Across from the Hendry County Courthouse
Highway 29 S. - LaBelle - 675-0244 For Reservation

**Congratulations
on the
20th SWAMP CABBAGE FESTIVAL**



**LABELLE
PLANT WORLD
INC.**

"Vegetable Plants for the Pros"

- Cabbage
- Cauliflower
- Celery
- Lettuce
- Onions
- Peppers
- Tomatoes
- Watermelons
- "Hi - Live" Transplant Trays

Intersection of Hwy. 80 & 80A

675-2020

P.O. Box 399

LaBelle