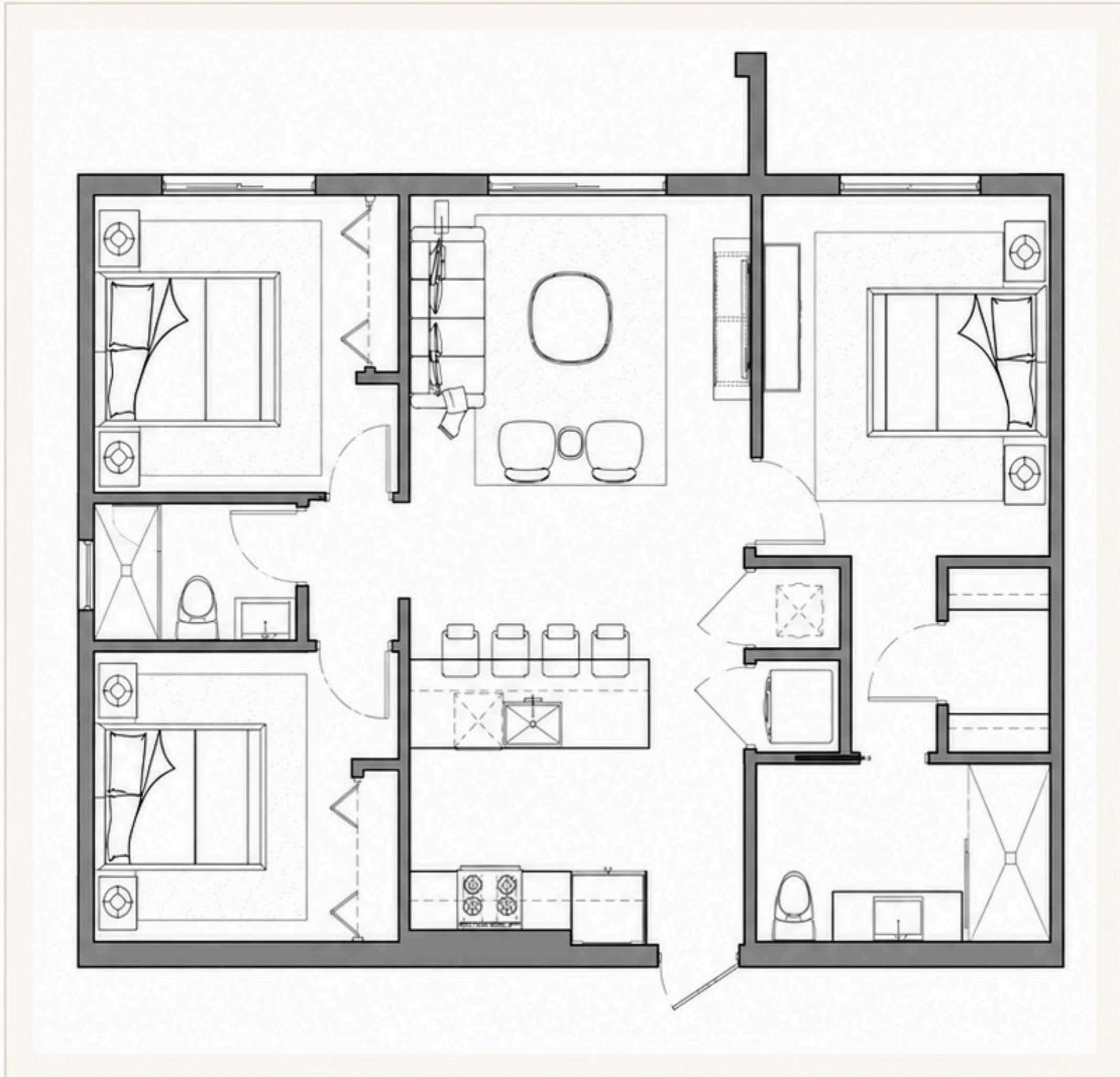


## FLOOR PLAN

**3B Unit**

3 Bedroom · 2 Bath

**1,335 sq ft****From \$3,500 / month****RESIDENCE FEATURES**

- Three-bedroom apartment ideal for families
- Two full spa-inspired bathrooms
- Expansive open-concept living area
- Designer kitchen with chef-inspired island
- Quartz countertops & stainless steel appliances
- Private balconies in every bedroom
- Spacious walk-in closets in select residences
- Freestanding soaking tub (select)
- In-unit washer & dryer, smart entry