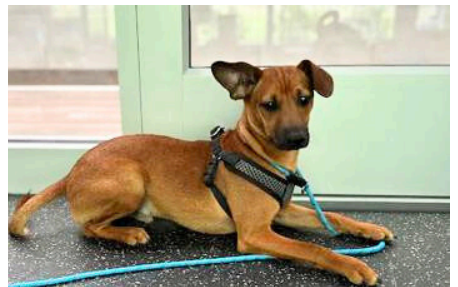
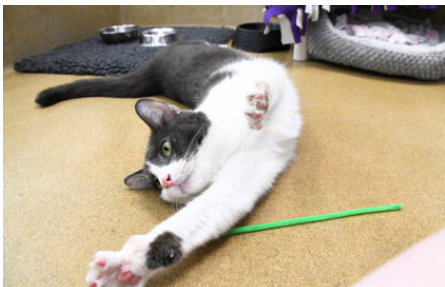


# VOLUNTEER FAQS

THANK YOU FOR YOUR  
INTEREST IN  
VOLUNTEERING, WE  
CAN'T WAIT TO HAVE  
YOU ON THE TEAM!



## Your Support Makes All The Difference

Here at the APF we rely heavily on our volunteers, with volunteer shifts scheduled in 2 hour time slots from 8:00-4:00 daily. Our volunteers help us keep our shelter clean, our facility running efficiently, and our animals happy, socialized, and ready for adoption!

### FOSTER REQUIRMENTS



- View available shifts
- Submit an application
- Schedule a volunteer orientation
- Donate \$25 application processing fee
- Come join us for your first shift!

## OPPORTUNITIES

- ✓ Dog Care Assistance
- ✓ Cat Care Assistance
- ✓ Small Animal Care Assistance
- ✓ Spay/Neuter Clinic Help
- ✓ Event/Shelter Support
- ✓ Foster Program

### OUR VISION

To create a community of volunteers that work together to support the shelter's needs, the animals in our care, and each other!

# Animal Protective Foundation

# VOLUNTEER FAQs



## 1. **How do I become a volunteer?**

The first step is to submit an application on our website. Once your application is received you will be invited to a group volunteer orientation where you will take a tour of the facility and learn about our available volunteer shifts needing sign up.

## 2. **I don't use email, can I still help?**

The most effective way for us to communicate with our volunteers and applicants is through our online Volunteer database and email. For this reason, we require that all volunteers have online access and a current email address they can check for updates on scheduling. (Some exceptions may be considered on a case by case basis; contact the Volunteer Coordinator with questions.)

## 3. **Is there an age requirement to volunteer?**

Yes, at this time we are only able to accept on-site volunteers who are 18 years or older due to our insurance policy. Younger animal lovers can still help through donation drives, reading to animals (with a guardian present), and if their family as a whole would like to foster pets in need.

## 4. **What is the expected time commitment for volunteering?**

The minimum commitment is a recurring 2-hour shift each week for a minimum of 4 months. (We may be able to make exceptions on a case by case basis so reach out to our Volunteer Coordinator with any questions!)

## 5. **Why are applicants asked to make a \$25 donation to volunteer?**

All applicants are asked to pay a \$25 application processing fee. This fee will cover the cost of a volunteer t-shirt (received after 30 days of volunteering), name badge, and educational materials and training upon acceptance into the program. The application fee is non-refundable and requested either at the volunteer orientation or prior to the start of your first scheduled visit.

# Animal Protective Foundation

# VOLUNTEER FAQs

## 6. How often do I need to volunteer?

We rely daily on volunteer help to complete all of the care and upkeep at the shelter. In service of this process we require all volunteers to fill a regularly scheduled 2 hour shift at least once a week. We will welcome you for additional hours as you are able as well!

## 7. Do you offer short-term or summer volunteer opportunities?

Due to limited resources and the training required for each volunteer position, we are not able to offer short term volunteer opportunities at this time. We ask that volunteers make a minimum of a 4 month commitment to participating in our program. If you are unable to make that commitment but would still like to help, you may want to consider signing up to be a foster volunteer, welcoming a pet in need to your home as they await adoption.

## 8. Should I worry about exposing my pets at home to illness?

While we take every precaution to protect our staff and volunteers, the risk of contracting minor infections is present in all animal shelters and facilities with a population of animals. We highly recommend washing your hands and changing out of your volunteer clothes before handling any of your own animals, keeping your pets up to date on vaccines, and consulting with your doctor or vet if you or your animals may be immunocompromised.

