




AuctionsPlus



EASTERN PLAINS ANGUS

ANNUAL BULL SALE

57 ANGUS SIRES

Wednesday 3rd August 2022 at 1PM

Free delivery up to 500kms.

Andrew & Sally White

T: (02) 6779 4237

M: 0477 359 057

E: easternplains@activ8.net.au

www.easternplainsangus.com.au



"Getting you ahead"

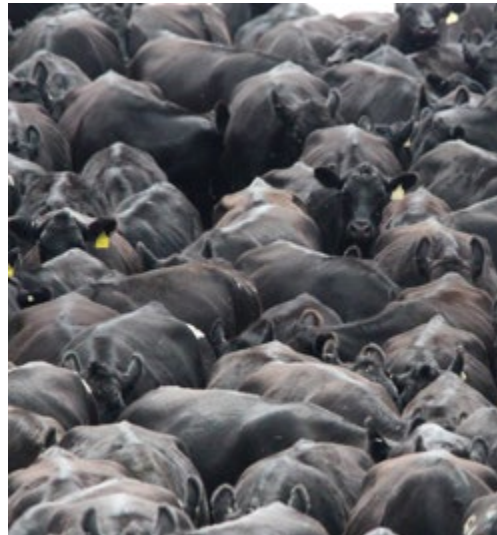
"EASTERN PLAINS" GUYRA NSW



**EASTERN PLAINS
ANGUS**

 @easternplainsangus

 @Eastern Plains Angus





EASTERN PLAINS ANGUS

ANNUAL BULL SALE

Wednesday 3rd August 2022 at 1pm

On property at

“Eastern Plains”, Guyra NSW

Bulls available for inspection from 10am

57 ANGUS SIRES

Andrew & Sally White

Phone: 02 6779 4237

Andrew Mobile: 0477 359 057

Email: easternplains@activ8.net.au

Website: www.easternplainsangus.com.au

*** Free delivery up to 500kms ***

Morning tea & BBQ lunch provided.



Selling Agents: **Elders**

For further details please contact:

Mark Atkin: 0455 310 657

Wayne Jenkyn: 0428 293 556

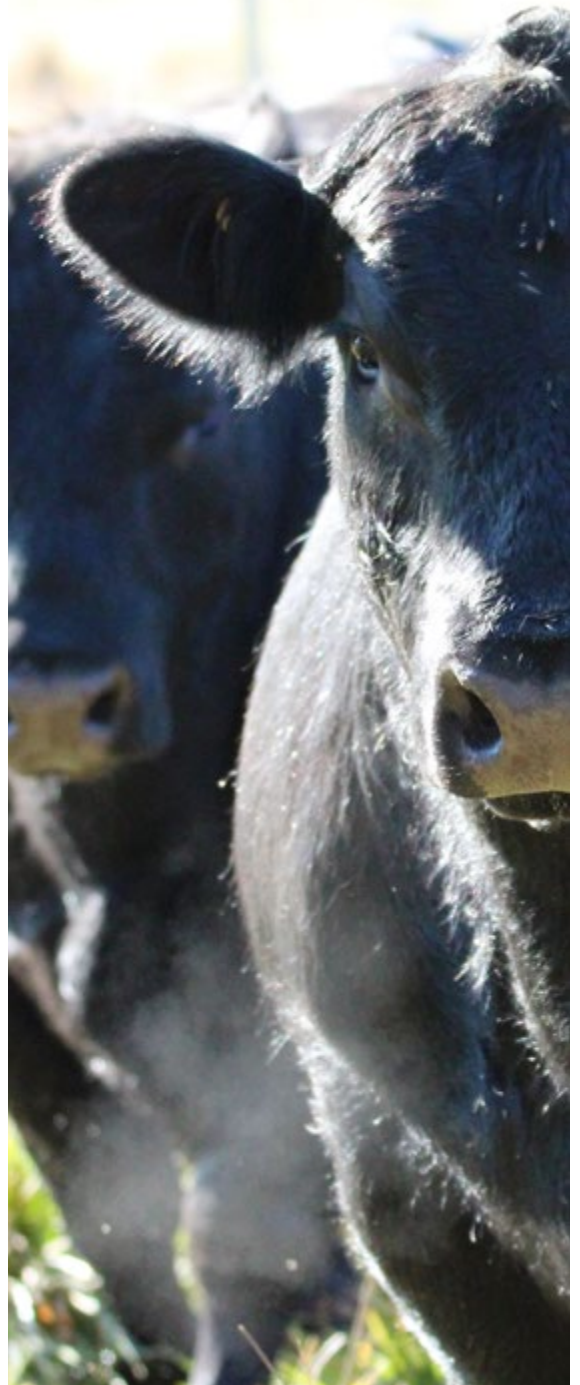
Lincoln McKinlay: 0419 239 963

Brian Kennedy: 0427 844 047

Auctioneer: Paul Dooley - 0458 662 646

Mobile Service at our selling yards is provided via a booster.

**** Please note service can be SLOW & PATCHY ****



 **AuctionsPlus**

The sale will also be interfaced with

Auctions Plus

Auctions Plus Sydney - 02 9262 4222

Paul Harris, Elders - 0428 600 510

www.auctionsplus.com.au



J-BAS8





Eastern Plains Angus Quality Assurance

All Eastern Plains Angus bulls in this catalogue are:

- ✓ Weighed, tagged & scored for calving ease at birth
- ✓ AI dates & joining period for natural matings for their dams recorded & submitted to Angus Australia
- ✓ Weighed at 200D, 400D, 600D
- ✓ Mature Cows Weights for their dams recorded & submitted to Angus Australia
- ✓ Docility scored – crush test at weaning & again at 400D
- ✓ Scrotal circumference measured at 400D
- ✓ Ear notch tested negative for Pestivirus
- ✓ Ultrasound scanned for eye muscle area, rib & rump fat + marbling
- ✓ Sire &/or Parent Verified through DNA testing
- ✓ Independently assessed for structure; feet, legs, sheath, muscle score & temperament
- ✓ Pre-sale veterinary test; BULLCHECK™ including a semen test for both Sperm Motility & Sperm Morphology
- ✓ Vaccinated with 7in1, Vibrovax & Pestigard. Treated with Selovin LA + Cydectin PO
- ✓ Eastern Plains Angus is a J-BAS8 herd with eligibility to enter all States
- ✓ Eastern Plains Angus is accredited with the European Union Cattle Accreditation Scheme



Welcome to Eastern Plains Angus

A good season & tremendously strong cattle market throughout 2022 has been a great plus for cattle producer's. We have been especially pleased to see so many of our clients enjoy strong price premiums for their cattle. A great thrill & congratulations!

Bull selection can be the single, most powerful tool for genetic improvement in your herd. Since they will supply half of the genetics to all the calves they sire, the genetic influence of the bulls you purchase is far reaching & multi-generational. If you breed your replacement heifers, this influence will be compounded & will impact on your profitability for many years to come.

With this in mind, we make a genuine effort to provide comprehensive objective information about the breeding functionality of our bull sale team; their fertility, health status, structure/conformation, pedigree & genetic merit. Amidst all the hype of the Spring bull selling season, we urge buyers to keep in mind that it is objective information which enables you to select bulls best suited to your program & environment. These are the bulls who will actually breed on to improve your profitability.



Above: BULLCHECK™ semen motility testing

We are proud of our record for integrity & credibility in this field. All bulls in this catalogue have passed our comprehensive pre-sale testing program. Those who did not were not catalogued. Please refer to the HEALTH & BULL TESTING INFORMATION pages in this catalogue for more info. Further detail can be found on our website - <https://www.easternplainsangus.com.au/bull-sale>.



Above: Transporting bulls used over commercial cows & heifers

We have a long held practice of testing our seedstock genetics in our own commercial & stud herds. The first 18 lots were used as yearlings in Spring 2021 joinings over commercial cows or heifers, or as back-up bulls in the stud following our Spring 2021 AI program. They will well & truly have calves on the ground by sale day.

A key component of our program is breeding all of our own replacement females in both our stud & commercial herds. Because of this, producing sound, low maintenance & fertile females is very important to us. We are mindful that the heifers we breed, our future breeders, are the counterpart of producing high growth steers. So we directly select for more moderate growth with an emphasis on structural soundness & fertility, particularly Days to Calving.



Please join us for our BULL WALK on Tuesday 26th July, here at "Eastern Plains", from 1pm to 4pm. It's an opportunity to take your time to thoroughly inspect our bull sale team without the pressure of sale day. We'll be around to answer any queries you may have regarding our program & bull preparation etc. At only a week out from our sale day, it's also an opportunity to inspect the bulls & bid with confidence via AuctionsPlus should you be unable to make sale day.

Alternatively, we welcome your inspection of our Bull Sale Team at any time - please call Andrew on mobile 0477 359 057 or landline 02 - 6779 4237 to arrange.

Looking forward to catching up with old clients & meeting some new in the lead up to & on sale day.

Kind regards
Andrew & Sally White





Sale Information

DELIVERY

Eastern Plains Angus is offering free delivery of bulls up to 500kms. Andrew White will co-ordinate delivery – mobile 0477 359 057. Alternatively, we recommend local carrier Peter Kratz - (02) 6772 5597 or 0412 667 320.

INSPECTION

Inspection of bulls prior to sale day is most welcome – please phone Andrew White on 0477 359 057 to arrange. Bulls will be yarded for inspection from 9.30am on the morning of sale day.

INSURANCE

A representative from Elders Insurance Agencies will be in attendance at the sale to assist with all enquiries. We recommend that purchasers insure their bulls.

STUD TRANSFERS

Ownership transfer of bulls will be registered by the vendor with Angus Australia upon written request of the purchaser or by instruction as noted on the Buyers Instruction Slip in this catalogue.

AIR TRAVEL

The nearest airport is located at Armidale. Please allow approx. 1hr to then to drive to “Eastern Plains” and the sale venue. Qantas Airlines (131313) fly regularly to Armidale. Please contact the selling agents to make arrangements to meet planes and for transport to the sale.

REFRESHMENTS

Morning tea and lunch will be provided with the compliments of Eastern Plains Angus & prepared by the volunteers of the Guyra Can Assist group.

SALE DAY SAFETY

Visitors enter yards & bull pens at their own risk. **Children aged 16yrs & under are NOT permitted to enter the yards & bull pens. Please do NOT take prams or strollers etc into the yards & bull pens.**

MOBILE PHONE SERVICE

Mobile Service at our selling yards provided via a booster. Please note service can be SLOW & PATCHY.

REBATE

A rebate of 2% payable to outside agents who introduce their clients in writing 24hrs prior to sale day.

GST

Bulls will be sold GST exclusive. That is, if a bull is knocked down for \$4,000 you will be invoiced \$4,400.

RECESSIVE GENETIC CONDITIONS

The genetic status for recessive genetic conditions for each bull appears in his Lot Details (look for ‘GENETIC STATUS’). For more information please see the Angus Australia website.

POSSESSION

All bulls in this catalogue are sold with 100% possession including full walking & semen rights.

EUROPEAN UNION CATTLE ACCREDITATION SCHEME (EUCAS)

Eastern Plains Angus is an EU accredited herd.

MEAT STANDARDS AUSTRALIA (MSA)

Eastern Plains has been registered with this scheme since 1999.

AUCTIONS PLUS

The sale will be interfaced with Auctions Plus. Contact Paul Harris from Elders on 0428 600 510, Auctions Plus Sydney on (02) 9262 4222 or www.auctionsplus.com.au.

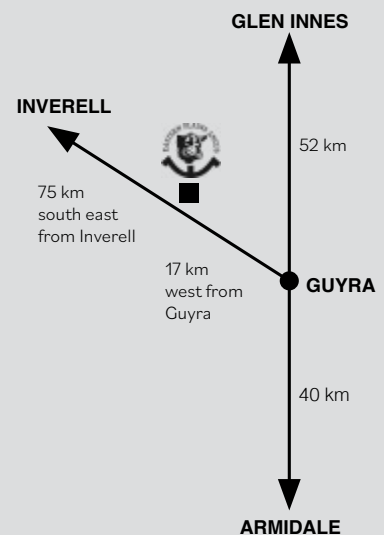


COVID

Our Sale will operate in line with current COVID restrictions. Whilst on-property we ask that you follow these. If you are ill, please refrain from attending & access the sale via AuctionsPlus or through your Agent.

HOW TO GET TO EASTERN PLAINS

“Eastern Plains” is located 18km west of Guyra, and 75km south east of Inverell. When coming from Guyra, the sale yards are an additional 400m further west of the house turn off. The sale yards are marked by a big “Eastern Plains Angus” sign.





AuctionsPlus™

How to Register and Bid on AuctionsPlus

1

Go to www.auctionsplus.com.au to register at least 48 hours before the sale.

2

Select “**Sign Up**” in the top right hand corner.

3

Fill out your name, mobile number, email address and create a password.

4

Go to your emails and confirm the account.

5

Return to AuctionsPlus and log in.

6

Select “**Dashboard**” and then select “**Request Approval to Buy**”.

7

Fill in buyer details and once completed go back to Dashboard.

8

Complete buyer induction module (approx. 30 minutes).

9

AuctionsPlus will email you to let you know that your account has been approved.

10

Log in on sale day and connect to auction.

11

Bid using the two-step process – unlock the bid button and bid at that price.

12

If you are successful, the selling agent will contact you post sale to organise delivery and payment.

For more information please contact us on:

Phone: (02) 9262 4222

Email: info@auctionsplus.com.au



Health & Bull Testing Information

All bulls offered have passed a Veterinary Bull Breeding Soundness Evaluation conducted by Australian Cattle Veterinarians accredited veterinarian, Dr Leisa Brown, Guyra District Veterinary Services as part of BULLCHECK™. Look out for this logo to indicate BULLCHECK™ testing results.



This included:

HEALTH & STRUCTURE

Bulls were examined for structural & gait soundness & freedom from physical & congenital defects. Bulls were inspected for penis health, sheath health & internal sex gland palpation via rectal entry for irregularities & /or infection. All bulls were certified as healthy at the time of veterinary examination.

SCROTAL CIRCUMFERENCE

All bulls presented had two evenly sized, symmetrical testicles of good tone & consistency at the time of veterinary examination. Scrotal circumference was measured as part of BULLCHECK™. All bulls had a scrotal circumference of at least 32cm. Attainment of 32cm or greater at 18 months of age is indicative of early sexual maturity & the ability to produce adequate quantities of high quality semen on a daily basis.

SEMEN TESTING

Semen samples were collected from all bulls in the catalogue as part of BULLCHECK™ and test results are reported for each bull with his Lot Details.

1. **Sperm Motility** is an assessment of the percentage of sperm cells in a semen sample that are observed as ‘moving forward’ (as well as colour). Often referred to as a ‘crush side’ semen test, following collection of a semen sample, a drop is placed on a microscope slide & examined, ‘crush side’, to assess the percentage of sperm cells moving forward. All bulls catalogued exhibited > 50% progressively motile sperm in their sperm sample.

2. **Sperm Morphology** refers to the anatomy or structure of the sperm. It cannot be tested ‘crush side’, requiring a large off-site laboratory microscope to examine a preserved semen sample. Notably, bull sperm morphology is the trait most strongly correlated with calf output & is an important measure of fertility in the bull. It will pick up defects in the sperm that ‘crush side’ testing cannot. A threshold guide for minimum Sperm Morphology is > 70% normal sperm for bulls used in single sire matings or AI & > 50% normal sperm for bulls used in multiple sire matings.

PESTIVIRUS

All bulls have ear notch tested negative to being Persistently Infected (PI) with pestivirus & can therefore be regarded as ‘non-carriers’. Each bull was vaccinated with Pestigard™ on 16/5/22 & 21/6/22. We recommend purchasers maintain an annual booster vaccination program.

VACCINATION & DRENCHING

All bulls were vaccinated with Vibrovax™ & 7in1 on 16/5/22 & 21/6/22. We recommend purchasers maintain an annual booster vaccination program. Bulls received an injection of Selovin™ on 16/5/22. Bulls were drenched with Cydectin PO on 16/5/22.

BOVINE JOHNES DISEASE

Eastern Plains Angus has a Johne’s Beef Assurance Score of 8 (J-BAS8). We continue our involvement in BJD monitoring, testing since 1998.

TICK FEVER VACCINE

By prior arrangement, we offer to vaccinate bulls sold into cattle tick areas at no cost to purchaser’s. We offer to run these bulls on-property until immunity develops prior to delivery. Please discuss with Andrew - 0477 359 057.



BEEFCLASS STRUCTURAL ASSESSMENT SYSTEM

Eastern Plains Angus Sale Bulls have been independently structurally assessed to maximise the quality of stock on offer. Any animals deemed inadequate have been removed from the sale draft. Sale bulls were assessed by Liam Cardile of BEEFXCEL on 4/5/22.

Structural problems in cattle have a substantial effect on both the reproductive & growth performance of a beef herd. It is widely recognised that structural problems in sires have detrimental effects on conception rates, calving patterns & thus profitability. Similarly, females with inadequate structural characteristics are more prone to weaning lighter calves or conceiving later in the breeding season than their more functional counterparts. These structural problems are filtered through the supply chain resulting in reduced income for the producer & feedlot, reducing overall productivity in the Australian Beef Industry.

Over the past decade, use of the BeefClass Structural Assessment System in the seedstock industry has produced a marked improvement in herds who have shown commitment to using the information appropriately. Through these dedicated breeders, there has been a flow on effect of structural improvement throughout all sectors of the beef cattle industry. Liam Cardile of 'BEEFXCEL' structurally assesses many of the leading seedstock herds in Australia. 'BEEFXCEL' is not involved in any genetic marketing or specific breeding advice & therefore has no conflict of interests to influence their stock appraisal.

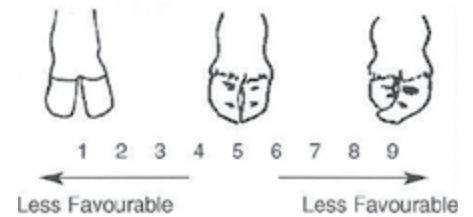
The integrity of the structural data provided by 'BEEFXCEL' is recognised throughout the industry as Liam is a fully INDEPENDENT assessor.

The Beef Class Structural Assessment System uses a 1-9 scoring system:

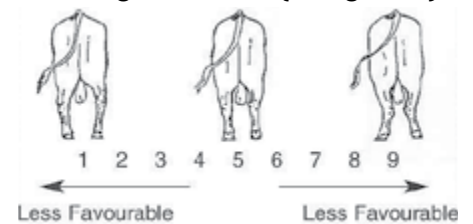
- A score of 5 is ideal (NB - Temperament Score of 1 is preferable).
- A score of 4 or 6 shows slight variation from ideal, but this includes most animals. An animal scoring 4 or 6 would be acceptable in any breeding program.
- A score of 3 or 7 shows greater variation but would be acceptable in most commercial programs. However, seedstock producers should be vigilant & understand that this score indicates greater variation from ideal.
- A score of 2 or 8 are low scoring animals & should be looked closely before purchasing (there are no bulls in this catalogue with these scores).
- A score of 1 or 9 should not be catalogued & are considered culls (no bulls in this catalogue scored 1 or 9).

Please contact Liam Cardile on 0409 572 570 should you wish to discuss the above.

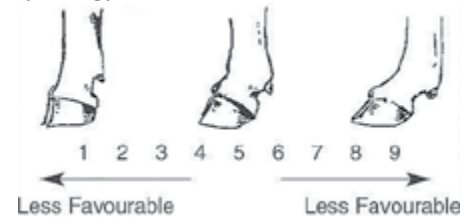
Claw Set



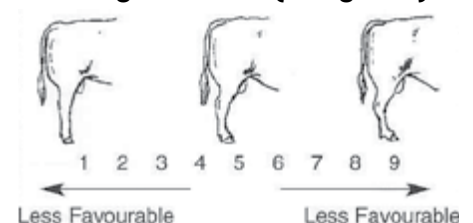
Rear Leg Hind View (R Leg Hind)



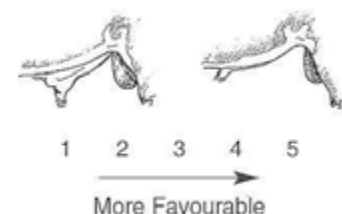
Front (F Ang) & Rear Foot Angle (R Ang)



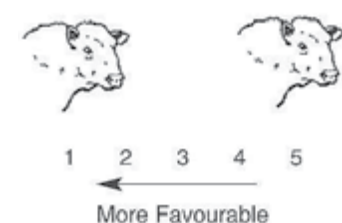
Rear Leg Side View (R Leg Side)



Sheath



Temperament (Temp)





Health & Bull Testing Certification



Guyra District Vet
207 Falconer Street
South Guyra, New South Wales 2365
Ph: 02 6779 1173
Email: reception@guyradistrictvet.com.au
Date: 24-05-2022

This is to certify that, Leisa Brown of Guyra District Veterinary Services carried out a complete breeding soundness evaluation on each bull listed in the 2022 Eastern Plains Angus catalogue.

This included:-

- *A physical examination* - to ensure structural soundness
- *Examination of the reproductive organs* - rectal palpation to examine the secondary sexual organs, measurement of scrotal circumference, palpation of the testicles and full examination of the penis and prepuce
- *Semen collection and assessment of gross motility* - using an electroejaculator and assessment of motility using iSperm technology
- *Semen morphology* - samples were sent for assessment by a UQSMP accredited morphologist at QSML. Semen morphology is an essential part of the veterinary bull breeding soundness evaluation. It is used to assess individual sperm cells for defects that can impact the fertility of the bull.

To achieve optimal fertility in a herd, an individual bull needs to achieve a pregnancy rate of 65% per cycle. The ultimate aim of a bull breeding soundness evaluation is to identify any problems/risk factors that may compromise this. Each bull listed in the 2022 Eastern Plains catalogue has been found to pass the requirements set by the Australian Cattle Vets Association bull breeding soundness examination.

All bulls have also been tested for pestivirus antigen and returned a negative result.

Signed: Leisa Brown Date: 24-05-2022



Understanding the TransTasman Cattle Evaluation (TACE)



What is the TransTasman Angus Cattle Evaluation?

The TransTasman Angus Cattle Evaluation (TACE) is the genetic evaluation program adopted by Angus Australia for Angus and Angus infused beef cattle. TACE uses Best Linear Unbiased Prediction (BLUP) technology to produce Estimated Breeding Values (EBVs) of recorded cattle for a range of important production traits (e.g. weight, carcass, fertility).

TACE includes pedigree, performance and genomic information from the Angus Australia and New Zealand Angus Association databases to evaluate the genetics of animals across Australia and New Zealand.

TACE analyses are conducted by the Agricultural Business Research Institute (ABRI), using beef genetic evaluation software developed by the Animal Genetics and Breeding Unit (AGBU), a joint institute of NSW Agriculture and the University of New England, and Meat and Livestock Australia Limited (MLA).

What is an EBV?

An animal's breeding value can be defined as its genetic merit for each trait. While it is not possible to determine an animal's true breeding value, it is possible to estimate it. These estimates of an animal's true breeding value are called EBVs (Estimated Breeding Values).

EBVs are expressed as the difference between an individual animal's genetics and a historical genetic level (i.e. group of animals) within

the TACE genetic evaluation, and are reported in the units in which the measurements are taken.

Using EBVs to Compare the Genetics of Two Animals

TACE EBVs can be used to estimate the expected difference in the genetics of two animals, with the expected difference equating to half the difference in the EBVs of the animals, all other things being equal (e.g. they are joined to the same animal/s).

For example, a bull with a 200 Day Growth EBV of +60 would be expected to produce progeny that are, on average, 10 kg heavier at 200 days of age than a bull with a 200 Day Growth EBV of +40 kg (i.e. 20 kg difference between the sire's EBVs, then halved as the sire only contributes half the genetics).

Or similarly, a bull with an IMF EBV of +3.0 would be expected to produce progeny with on average, 1% more intramuscular fat in a 400 kg carcass than a bull with an IMF EBV of +1.0 (i.e. 2% difference between the sire's EBVs, then halved as the sire only contributes half the genetics).

Using EBVs to Benchmark an Animal's Genetics with the Breed

EBVs can also be used to benchmark an animal's genetics relative to the genetics of other Angus or Angus infused animals in Australia and New Zealand.

To benchmark an animal's genetics relative to other Angus animals, an animal's EBV can be compared to the EBV reference tables, which

provide the **breed average EBV** and the **percentile bands table**.

The current breed average EBV is listed on the bottom of each page in this publication, while the current EBV reference tables are included at the end of these introductory notes.

For easy reference, the percentile band in which an animal's EBV ranks is also published in association with the EBV.

Considering Accuracy

An accuracy value is published with each EBV, and is usually displayed as a percentage value immediately below the EBV.

The accuracy value provides an indication of the reliability of the EBV in estimating the animal's genetics (or true breeding value), and is an indication of the amount of information that has been used in the calculation of the EBV.

EBVs with accuracy values below 50% should be considered as preliminary or of low accuracy, 50-74% as of medium accuracy, 75-90% of medium to high accuracy, and 90% or greater as high accuracy.

Description of TACE EBVs

EBVs are calculated for a range of traits within TACE, covering calving ease, growth, fertility, maternal performance, carcass merit, feed efficiency and structural soundness. A description of each EBV included in this publication is provided on the following pages.



Understanding TACE Estimated Breeding Values (EBVs)



BIRTH			
Calving Ease Direct (CED)	%	Genetic differences in the ability of a sire's calves to be born unassisted from 2 year old heifers.	Higher EBVs indicate fewer calving difficulties in 2 year old heifers.
Calving Ease Daughters (CEM)	%	Genetic differences in the ability of a sire's daughters to calve unassisted at 2 years of age.	Higher EBVs indicate fewer calving difficulties in 2 year old heifers.
Gestation Length (GL)	days	Genetic differences between animals in the length of time from the date of conception to the birth of the calf.	Lower EBVs indicate shorter gestation length.
Birth Weight (BW)	kg	Genetic differences between animals in calf weight at birth.	Lower EBVs indicate lighter birth weight.
GROWTH & MATERNAL			
200 Day Growth (200)	kg	Genetic differences between animals in live weight at 200 days of age due to genetics for growth.	Higher EBVs indicate heavier live weight.
400 Day Growth (400)	kg	Genetic differences between animals in live weight at 400 days of age.	Higher EBVs indicate heavier live weight.
600 Day Growth (600)	kg	Genetic differences between animals in live weight at 600 days of age.	Higher EBVs indicate heavier live weight.
Mature Cow Weight (MCW)	kg	Genetic differences between animals in live weight of cows at 5 years of age.	Higher EBVs indicate heavier mature weight.
Milk	kg	Genetic differences between animals in live weight at 200 days of age due to the maternal contribution of its dam.	Higher EBVs indicate heavier live weight.
FERTILITY			
Days to Calving (DC)	days	Genetic differences between animals in the time from the start of the joining period (i.e. when the female is introduced to a bull) until subsequent calving.	Lower EBVs indicate shorter time to calving.
Scrotal Size (Scrot)	cm	Genetic differences between animals in scrotal circumference at 400 days of age.	Higher EBVs indicate larger scrotal circumference.
CARCASS			
Carcass Weight (CWT)	kg	Genetic differences between animals in hot standard carcass weight at 750 days of age.	Higher EBVs indicate heavier carcass weight.
Eye Muscle Area (EMA)	cm ²	Genetic differences between animals in eye muscle area at the 12/13th rib site in a 400 kg carcass.	Higher EBVs indicate larger eye muscle area.
Rib Fat (Rib)	mm	Genetic differences between animals in fat depth at the 12/13th rib site in a 400 kg carcass.	Higher EBVs indicate more fat.
Rump Fat (Rump)	mm	Genetic differences between animals in fat depth at the P8 rump site in a 400 kg carcass.	Higher EBVs indicate more fat.
Retail Beef Yield (RBY%)	%	Genetic differences between animals in boned out saleable meat from a 400 kg carcass.	Higher EBVs indicate higher yield.
Intramuscular Fat (IMF%)	%	Genetic differences between animals in intramuscular fat (marbling) at the 12/13th rib site in a 400 kg carcass.	Higher EBVs indicate more intramuscular fat.



FEED EFFICIENCY			
Net Feed Intake Feedlot (NFI-F)	kg/day	Genetic differences between animals in feed intake at a standard weight and rate of weight gain when animals are in a feedlot finishing phase.	Lower EBVs indicate more feed efficiency.
%TEMPERAMENT			
Docity (DOC)	%	Genetic differences between animals in temperament.	Higher EBVs indicate better temperament.
STRUCTURE			
Claw Set (Claw)	Score	Estimates of genetic differences in claw set structure - shape and evenness of claws.	Lower EBVs indicate more desirable claw structure.
Foot Angle (Ang)	Score	Estimates of genetic differences in foot angle - strength of pastern, depth of heel.	Lower EBVs indicate more desirable foot angle.
SELECTION INDEXES			
Angus Breeding Index	\$	Genetic differences between animals in net profitability per cow joined in a typical commercial self replacing herd using Angus bulls. This selection index is not specific to a particular production system or market end-point, but identifies animals that will improve overall profitability in the majority of commercial grass and grain finishing beef production systems.	Higher selection index values indicate greater profitability.
Domestic Index	\$	Genetic differences between animals in net profitability per cow joined in a commercial self replacing herd targeting the domestic supermarket trade.	Higher selection index values indicate greater profitability.
Heavy Grain Index	\$	Genetic differences between animals in net profitability per cow joined in a commercial self replacing herd targeting pasture grown steers with a 200 day feedlot finishing period for the grain fed high quality, highly marbled markets.	Higher selection index values indicate greater profitability.
Heavy Grass Index	\$	Genetic differences between animals in net profitability per cow joined in a commercial self replacing herd targeting pasture finished steers.	Higher selection index values indicate greater profitability.



Angus Australia DNA Parentage Verification

The suffix displayed at the end of each animal's name indicates the DNA parentage verification that has been conducted by Angus Australia.

- PV:** both parents have been verified by DNA
- SV:** the sire has been verified by DNA
- DV:** the dam has been verified by DNA
- #:** DNA verification has not been conducted
- E:** DNA verification has identified that the sire and/or dam may possibly be incorrect, but this cannot be confirmed conclusively.

TransTasman Angus Cattle Evaluations (TACE) - Mid June 2022 Reference Tables

BREED AVERAGE EBVs

Brd Avg	Calving Ease		Birth		Growth			Fertility		Carcass			Other		Structure		Selection Indexes													
	CEDir	CEDirs	GL	BW	200	400	600	MCW	Milk	SS	DTC	CWT	EMA	RIB	P8	RFY	IMF	NFI:F	DOC	Angle	Claw	\$A	\$D	\$GN	\$GS	\$A-L	\$D-L	\$GN-L	\$GS-L	\$PRO
+2.2	+2.5	+4.7	+4.1	+50	+89	+116	+100	+17	+2.1	-4.6	+66	+6.2	+0.0	-0.4	+0.5	+2.1	+0.18	+7	+0.98	+0.85	+194	+160	+255	+178	+335	+400	+376	+141	+179	

* Breed average represents the average EBV of all 2020 drop Australian Angus and Angus-influenced seedstock animals analysed in the Mid June 2022 TransTasman Angus Cattle Evaluation.

PERCENTILE BANDS TABLE

% Band	Calving Ease		Birth		Growth			Fertility		Carcass			Other		Structure		Selection Indexes														
	Less Difficulty	More Difficulty	Shorter Gestation Length	Lighter Birth Weight	200	400	600	MCW	Milk	SS	DTC	CWT	EMA	RIB	P8	RFY	IMF	NFI:F	DOC	Angle	Claw	\$A	\$D	\$GN	\$GS	\$A-L	\$D-L	\$GN-L	\$GS-L	\$PRO	\$T
1%	+11.0	+9.8	-10.6	-0.1	+68	+120	+161	+158	+28	+4.7	-9.9	+93	+12.7	+3.5	+3.6	+2.9	+4.6	-0.57	+36	+0.60	+0.42	+279	+232	+375	+266	+451	+390	+548	+510	+218	+242
5%	+9.1	+8.2	-8.8	+1.2	+62	+110	+146	+138	+25	+3.7	-8.3	+85	+10.6	+2.3	+2.2	+2.1	+3.8	-0.34	+27	+0.72	+0.56	+255	+212	+342	+241	+421	+363	+509	+474	+197	+225
10%	+8.0	+7.2	-7.8	+1.9	+59	+106	+139	+129	+23	+3.3	-7.4	+80	+9.5	+1.8	+1.6	+1.8	+3.4	-0.22	+22	+0.78	+0.62	+243	+200	+324	+228	+403	+348	+487	+455	+185	+216
15%	+7.1	+6.5	-7.2	+2.4	+57	+102	+135	+123	+22	+3.0	-6.9	+78	+8.7	+1.4	+1.2	+1.5	+3.2	-0.14	+20	+0.80	+0.66	+234	+193	+311	+219	+391	+338	+472	+441	+177	+210
20%	+6.4	+5.9	-6.7	+2.7	+56	+100	+131	+119	+21	+2.8	-6.4	+75	+8.2	+1.1	+0.9	+1.3	+2.9	-0.08	+17	+0.84	+0.70	+227	+187	+301	+212	+382	+329	+459	+429	+171	+204
25%	+5.7	+5.3	-6.3	+3.0	+55	+98	+128	+115	+20	+2.7	-6.1	+74	+7.7	+0.9	+0.6	+1.1	+2.8	-0.03	+15	+0.86	+0.72	+221	+182	+293	+206	+373	+322	+449	+420	+165	+200
30%	+5.1	+4.8	-5.9	+3.2	+53	+96	+125	+111	+20	+2.5	-5.8	+72	+7.3	+0.7	+0.4	+1.0	+2.6	+0.02	+14	+0.88	+0.74	+216	+177	+285	+200	+366	+315	+439	+411	+161	+195
35%	+4.5	+4.4	-5.6	+3.5	+52	+94	+123	+108	+19	+2.4	-5.4	+70	+7.0	+0.5	+0.2	+0.9	+2.4	+0.06	+12	+0.92	+0.78	+211	+173	+278	+195	+359	+309	+430	+403	+156	+191
40%	+4.0	+3.9	-5.3	+3.7	+51	+92	+121	+105	+18	+2.3	-5.2	+69	+6.6	+0.3	+0.0	+0.7	+2.3	+0.10	+10	+0.94	+0.80	+206	+169	+271	+190	+352	+304	+421	+395	+152	+188
45%	+3.4	+3.4	-5.0	+3.9	+50	+91	+118	+103	+18	+2.1	-4.9	+68	+6.3	+0.1	-0.2	+0.6	+2.2	+0.14	+9	+0.96	+0.82	+201	+165	+264	+185	+346	+298	+413	+388	+147	+184
50%	+2.8	+3.0	-4.7	+4.1	+50	+89	+116	+100	+17	+2.0	-4.6	+66	+6.0	+0.0	-0.4	+0.5	+2.1	+0.17	+8	+0.96	+0.84	+196	+161	+257	+180	+339	+293	+404	+380	+143	+181
55%	+2.2	+2.5	-4.4	+4.3	+49	+88	+114	+97	+17	+1.9	-4.4	+65	+5.7	-0.2	-0.6	+0.4	+1.9	+0.21	+6	+0.98	+0.86	+192	+158	+250	+175	+333	+287	+396	+373	+139	+177
60%	+1.6	+2.0	-4.1	+4.5	+48	+86	+112	+95	+16	+1.8	-4.1	+64	+5.5	-0.3	-0.8	+0.3	+1.8	+0.25	+4	+1.02	+0.88	+187	+154	+244	+170	+326	+281	+387	+365	+134	+173
65%	+0.9	+1.4	-3.8	+4.7	+47	+85	+110	+92	+16	+1.7	-3.8	+62	+5.2	-0.5	-1.0	+0.2	+1.7	+0.30	+3	+1.04	+0.92	+182	+149	+236	+164	+319	+275	+378	+357	+130	+170
70%	+0.1	+0.8	-3.4	+5.0	+46	+83	+107	+89	+15	+1.6	-3.5	+61	+4.9	-0.7	-1.2	+0.0	+1.6	+0.34	+1	+1.06	+0.94	+176	+145	+229	+159	+311	+268	+368	+348	+125	+165
75%	-0.7	+0.1	-3.1	+5.2	+45	+81	+105	+86	+14	+1.4	-3.2	+59	+4.5	-0.9	-1.4	-0.1	+1.4	+0.39	-1	+1.08	+0.98	+170	+140	+220	+153	+302	+261	+357	+338	+119	+161
80%	-1.7	-0.6	-2.7	+5.5	+43	+79	+102	+82	+14	+1.3	-2.8	+57	+4.1	-1.1	-1.6	-0.3	+1.3	+0.44	-3	+1.10	+1.00	+163	+135	+211	+146	+292	+253	+344	+326	+112	+155
85%	-2.8	-1.5	-2.3	+5.8	+42	+77	+98	+78	+13	+1.1	-2.4	+55	+3.7	-1.4	-1.9	-0.5	+1.1	+0.51	-5	+1.14	+1.04	+154	+128	+200	+137	+280	+242	+329	+313	+104	+149
90%	-4.4	-2.7	-1.7	+6.3	+40	+74	+94	+72	+12	+0.9	-1.8	+52	+3.1	-1.7	-2.3	-0.8	+0.9	+0.59	-8	+1.18	+1.10	+142	+118	+184	+125	+263	+229	+308	+294	+93	+141
95%	-6.9	-4.6	-0.8	+7.0	+37	+69	+87	+63	+10	+0.5	-0.9	+48	+2.2	-2.2	-3.0	-1.2	+0.5	+0.72	-12	+1.26	+1.16	+122	+102	+158	+106	+235	+205	+274	+264	+75	+127
99%	-12.4	-8.7	+1.3	+8.4	+30	+59	+73	+45	+7	-0.2	+1.1	+39	+0.2	-3.3	-4.2	-2.0	-0.1	+0.97	-20	+1.40	+1.32	+80	+69	+104	+67	+169	+151	+196	+191	+38	+95

* The percentile bands represent the distribution of EBVs across the 2020 drop Australian Angus and Angus-influenced seedstock animals analysed in the Mid June 2022 TransTasman Angus Cattle Evaluation.

Eastern Plains Angus EBV Summary for 2022 Sale Bulls cont.



LOT	IDENT	SIRE	CALVING EASE				GROWTH & MATERNAL				FERTILITY				CARCASE						STRUCTURE				SELECTION INDEX VALUES			
			CED	CEM	GL	BWT	200	400	600	MCW	Milk	Scrot	DC	CWT	EMA	RIB	RUMP	RYB	IMF	NFI-F	DOC	ANG	CLAW	ABI	DOM	GRN	GRS	
33	NEPR127	EASTERN PLAINS PITNACREE P110	6.2	2.8	-5.4	2.2	48	85	109	81	22	0.9	-6.4	69	6.3	0.9	0.9	-0.5	2	0.11	-13	1.02	0.88	\$222	\$181	\$290	\$205	
34	NEPR146	EASTERN PLAINS PITNACREE P110	-1.5	-4.2	-3.5	5.2	48	83	103	83	19	1	-7.3	64	7.7	0.4	0.5	0.1	2.5	0.11	2	0.92	0.84	\$206	\$171	\$272	\$187	
35	NEPR68	EASTERN PLAINS PELTON P54	-0.6	-0.5	-4.5	5.7	53	94	123	115	15	2	-2.6	78	7.2	-1.1	-1.1	1.2	1.7	0.13	-15	-	-	\$175	\$146	\$229	\$156	
36	NEPR126	EASTERN PLAINS PITNACREE P110	5.8	1.3	-7.1	2.4	43	82	100	72	23	0.9	-12.8	64	4.9	3.1	4.8	-2.4	2.3	0.42	0	1.24	0.92	\$233	\$197	\$294	\$217	
37	NEPR149	EASTERN PLAINS PITNACREE P110	4.7	1.4	-5	3.3	51	89	118	92	21	1.6	-6.6	74	7.4	1.2	1.1	-0.3	2	0.24	-15	1.12	1.04	\$224	\$181	\$291	\$208	
38	NEPR73	EF COMPLEMENT 8088	3.2	7.2	-3.8	4.4	53	99	132	112	22	1.8	-5.6	80	6.9	0.3	0.7	-0.1	1.9	0.3	9	1.14	0.88	\$212	\$174	\$273	\$196	
39	NEPR90	BALDRIDGE BEAST MODE B074	2.9	5	-3.5	3.4	58	99	121	104	15	3.7	-8.4	73	5.5	-0.4	-0.7	1	1.9	0.28	12	0.78	0.64	\$247	\$216	\$317	\$230	
40	NEPR13	LANDFALL KEYSTONE K132	6.6	9	-7.3	1.6	50	96	124	100	22	1	-5.4	76	4	2	0.5	-0.3	2.1	0.39	15	1.1	0.7	\$223	\$185	\$290	\$206	
41	NEPR96	EASTERN PLAINS PEMBROOKE P55	2.1	9.5	-3.2	2.4	46	86	111	97	20	1.8	-5.4	72	5.9	-0.2	-0.7	0.7	1.1	-0.1	9	0.96	0.88	\$183	\$157	\$231	\$166	
42	NEPR86	EF COMPLEMENT 8088	-0.3	5.8	-3.3	5.7	59	104	137	119	15	2.6	-5.8	77	5.6	1.4	0.8	-0.2	2.2	0.41	10	1.12	0.82	\$218	\$181	\$284	\$202	
43	NEPR140	EASTERN PLAINS PELTON P54	5.2	4.6	-5.1	2.8	45	85	107	82	19	1.7	-5.3	69	8.5	1	1.6	0	1.8	0.35	-7	0.96	0.94	\$205	\$174	\$260	\$190	
44	NEPR128	EASTERN PLAINS PELTON P54	-1.9	0.3	-3.3	5.9	47	84	109	105	17	1.8	-2.7	69	8	-1.1	-0.9	1	1.9	0.11	-20	0.92	0.84	\$152	\$126	\$202	\$133	
45	NEPR12	LD CAPITALIST 316	9.8	9	-6.7	2.6	46	83	104	77	17	2.2	-5.2	61	5.9	1.3	1	0.3	2.2	0.46	3	1.04	1.04	\$220	\$186	\$282	\$204	
46	NEPR143	EASTERN PLAINS PITNACREE P110	0.7	-0.5	-6.8	4.6	56	95	123	99	21	0.4	-8.3	73	6	1.4	2.9	-1.3	1.9	0.19	-1	0.96	0.84	\$229	\$187	\$298	\$210	
47	NEPR100	EASTERN PLAINS PELTON P54	3.9	4.2	-7.1	4.2	49	88	112	97	16	2.3	-5.8	65	5.1	2.4	2.5	-0.8	2	0.23	-7	0.94	0.84	\$198	\$166	\$255	\$181	
48	NEPR89	LD CAPITALIST 316	6.2	6.9	-2.5	3.8	48	87	109	96	17	0.9	-3.5	68	6.5	-0.1	-0.9	0.6	1.6	0.16	-3	1.02	0.96	\$186	\$160	\$240	\$166	
49	NEPR150	EASTERN PLAINS PITNACREE P110	7.7	4.3	-5.7	2	47	84	104	79	23	0.5	-8.6	65	6.4	1.2	2.3	-0.8	2.5	0.17	-10	0.88	0.86	\$239	\$198	\$313	\$222	
50	NEPR144	EASTERN PLAINS PELTON P54	-1.9	0.1	-3.8	5.7	52	87	115	104	12	2.5	-4.8	68	8.4	0	0.7	0.8	1.5	0.19	-15	0.92	0.82	\$184	\$153	\$235	\$167	
51	NEPR25	GAR BONFIRE	3.7	0	-5.1	4.7	59	102	127	118	17	2.4	-6	77	6.4	-2.2	-2.8	1.9	1.8	-0.17	2	0.94	0.86	\$223	\$195	\$290	\$202	
53	NEPR123	EASTERN PLAINS PITNACREE P110	4.6	2.5	-4.3	1.6	37	73	84	65	23	1.5	-8.9	52	4.1	2.6	4.2	-2	2.6	0.19	9	1.06	0.94	\$192	\$164	\$250	\$175	
54	NEPR119	EASTERN PLAINS PITNACREE P110	4.2	1.8	-4.9	2.8	44	83	103	87	22	1.3	-8.9	60	5	2.4	2.9	-1.5	2.4	0.2	7	-	-	\$202	\$169	\$261	\$184	
56	NEPR121	EASTERN PLAINS PEMBROOKE P55	3.3	7.7	-5.6	3	48	82	104	94	15	0.8	-5.8	67	8	0.1	-0.8	1	1.1	-0.02	8	0.76	0.78	\$194	\$168	\$244	\$174	
57	NEPR74	CHILTERN PARK MOE M6	7.9	5.4	-3.1	3.6	53	103	134	98	24	1.4	-3.1	75	6	-1.9	-2	0.8	1.9	0.02	9	0.74	0.7	\$221	\$185	\$286	\$203	



Eastern Plains Angus 2022 Reference Sires

BALDRIDGE 38 SPECIAL ^{PV} (Natural)

HBR

BORN: 13/1/2015 **IDENT:** USA18229487 **GENETIC STATUS:** AMF,CAF,DDF,NHF,MAF,OSF,RGF
EF COMPLEMENT 8088^{PV} STYLES UPGRADE J59[#]

SIRE: EF COMMANDO 1366^{PV} USA17082311 **DAM:** BALDRIDGE ISABEL Y69[#] USA17149410
RIVERBEND YOUNG LUCY W1470[#] BALDRIDGE ISABEL T935[#]

Mid June 2021 Angus Australia Trans-Tasman Angus Cattle Evaluation (TACE)

TACE	CALVING EASE				GROWTH & MATERNAL				FERTILITY			CARCASE						STRUCTURE			
	CED	CEM	GL	BW	200	400	600	MCW	Milk	Scrot	DC	CWT	EMA	RIB	RUMP	RBY%	IMF%	NFI-F	DOC	ANG	CLAW
EBV	8.5	6.5	-5.4	2.8	65	116	148	108	22	2.5	-4.1	77	7.2	0.4	-0.8	-0.1	2.4	0.56	5	0.82	0.62
ACC	81%	63%	99%	98%	97%	97%	96%	87%	83%	96%	52%	85%	87%	87%	84%	82%	85%	68%	96%	99%	99%

SELECTION INDEX VALUES

Ang Breed	Domestic	Hvy Grain	Hvy Grass
\$271	\$224	\$363	\$256

Traits observed: Genomics

BALDRIDGE BEAST MODE B074 ^{PV} (Natural)

HBR

BORN: 7/2/2014 **IDENT:** USA17960722 **GENETIC STATUS:** AMFU,CAF,DDF,NHFU,DWF,MAF,MHF
C R A BEXTOR 872 5205 608[#] STYLES UPGRADE J59[#]

SIRE: G A R PROPHET^{SV} USA16295688 **DAM:** BALDRIDGE ISABEL Y69[#] USA17149410
G A R OBJECTIVE 1885[#] BALDRIDGE ISABEL T935[#]

Mid June 2021 Angus Australia Trans-Tasman Angus Cattle Evaluation (TACE)

TACE	CALVING EASE				GROWTH & MATERNAL				FERTILITY			CARCASE						STRUCTURE			
	CED	CEM	GL	BW	200	400	600	MCW	Milk	Scrot	DC	CWT	EMA	RIB	RUMP	RBY%	IMF%	NFI-F	DOC	ANG	CLAW
EBV	7.1	7.5	-3.6	3.6	76	122	150	120	14	2.7	-5.7	79	5.4	-1.1	-2.4	1.1	2.6	0.07	22	0.54	0.52
ACC	94%	80%	99%	99%	99%	99%	99%	97%	95%	98%	63%	93%	91%	91%	89%	87%	89%	77%	98%	98%	98%

SELECTION INDEX VALUES

Ang Breed	Domestic	Hvy Grain	Hvy Grass
\$312	\$264	\$422	\$294

Traits observed: Genomics

CHILTERN PARK MOE M6 ^{PV} (Natural)

HBR

BORN: 5/3/2016 **IDENT:** GTNM6 **GENETIC STATUS:** AMFU,CAFU,DDF,NHFU
TE MANIA CALAMUS C46^{SV} HIDDEN VALLEY TIMEOUT A45^{SV}

SIRE: TE MANIA FOE F734^{SV} VTMF734 **DAM:** STRATHEWEN TIMEOUT JADE F15^{PV} VSNF15
TE MANIA DANDLOO D700[#] STRATHEWEN 1407 JADE C05^{PV}

Mid June 2021 Angus Australia Trans-Tasman Angus Cattle Evaluation (TACE)

TACE	CALVING EASE				GROWTH & MATERNAL				FERTILITY			CARCASE						STRUCTURE			
	CED	CEM	GL	BW	200	400	600	MCW	Milk	Scrot	DC	CWT	EMA	RIB	RUMP	RBY%	IMF%	NFI-F	DOC	ANG	CLAW
EBV	8.8	4.2	-2.2	2.5	54	103	137	91	27	2	-5.1	68	7.3	-1.1	0	0.3	1.8	0.31	28	0.98	0.7
ACC	88%	70%	99%	99%	97%	97%	96%	90%	87%	96%	60%	89%	88%	89%	87%	83%	87%	80%	96%	93%	93%

SELECTION INDEX VALUES

Ang Breed	Domestic	Hvy Grain	Hvy Grass
\$247	\$203	\$317	\$233

Traits observed: BWT,200WT,Genomics

EASTERN PLAINS PARADISE P28 ^{SV} (AI)

HBR

BORN: 2/7/2018 **IDENT:** NEPP28 **GENETIC STATUS:** AMFU,CAFU,DDFU,NHFU
AYRVALE BARTEL E7^{PV} EASTERN PLAINS RIGHT TIME B113^{PV}

SIRE: BOOROOMOOKA BARTEL K274^{SV} NGMK274 **DAM:** EASTERN PLAINS ABBA D132[#] NEPD132
BOOROOMOOKA VORACIOUS H465[#] EASTERN PLAINS ABBA B134[#]

Mid June 2022 Angus Australia Trans-Tasman Angus Cattle Evaluation (TACE)

TACE	CALVING EASE				GROWTH & MATERNAL				FERTILITY			CARCASE						STRUCTURE			
	CED	CEM	GL	BW	200	400	600	MCW	Milk	Scrot	DC	CWT	EMA	RIB	RUMP	RBY%	IMF%	NFI-F	DOC	ANG	CLAW
EBV	5.4	10.1	-5.9	4.3	60	96	149	145	14	1.9	-4.1	83	7.1	-0.7	-1.3	0.6	1.6	-0.07	-17	1.02	0.84
ACC	62%	53%	85%	78%	76%	77%	78%	76%	70%	73%	48%	71%	68%	74%	71%	70%	68%	57%	61%	76%	75%

SELECTION INDEX VALUES

Ang Breed	Domestic	Hvy Grain	Hvy Grass
\$206	\$149	\$268	\$192

Traits observed: GL,CE,BWT,200WT,400WT,600WT,SC,Scan(EMA,Rib,Rump,IMF),Structure(Claw Set x 1, Foot Angle x 1),Genomics



Eastern Plains Angus 2022 Reference Sires

EASTERN PLAINS PARINGI P32^{SV} (AI)

HBR

BORN: 2/7/2018 **IDENT:** NEPP32 **GENETIC STATUS:** AMFU,CAFU,DDFU,NHFU
 CONNEALY CAPITALIST 028[#] WATTLETOP FRANKLIN G188^{SV}
SIRE: LD CAPITALIST 316^{PV} USA17666102 **DAM:** EASTERN PLAINS EDA M128[#] NEPM128
 LD DIXIE ERICA 2053[#] EASTERN PLAINS EDA K24[#]

Mid June 2022 Angus Australia Trans-Tasman Angus Cattle Evaluation (TACE)

TACE	CALVING EASE				GROWTH & MATERNAL				FERTILITY		CARCASE						STRUCTURE				
	CED	CEM	GL	BW	200	400	600	MCW	Milk	Scrot	DC	CWT	EMA	RIB	RUMP	RBV%	IMF%	NFI-F	DOC	ANG	CLAW
EBV	10.5	9.2	-6.2	3.4	66	110	150	129	20	2.1	-2.1	92	8.2	1.2	0.2	0	1.4	-0.13	-11	1.04	0.92
ACC	66%	57%	84%	79%	77%	78%	80%	76%	68%	77%	48%	72%	69%	73%	71%	70%	69%	60%	67%	80%	79%

SELECTION INDEX VALUES			
Ang Breed	Domestic	Hvy Grain	Hvy Grass
\$239	\$189	\$316	\$222

Traits observed: GL,CE,BWT,200WT,400WT,600WT,SC,Scan(EMA,Rib,Rump,IMF),Structure(Claw Set x 1, Foot Angle x 1),Genomics

EASTERN PLAINS PELTON P54^{SV} (AI)

HBR

BORN: 5/7/2018 **IDENT:** NEPP54 **GENETIC STATUS:** AMFU,CAFU,DDFU,NHFU
 CONNEALY CAPITALIST 028[#] SILVEIRAS CONVERSION 8064[#]
SIRE: LD CAPITALIST 316^{PV} USA17666102 **DAM:** EASTERN PLAINS LACEY M46[#] NEPM46
 LD DIXIE ERICA 2053[#] EASTERN PLAINS LACEY F39[#]

Mid June 2022 Angus Australia Trans-Tasman Angus Cattle Evaluation (TACE)

TACE	CALVING EASE				GROWTH & MATERNAL				FERTILITY		CARCASE						STRUCTURE				
	CED	CEM	GL	BW	200	400	600	MCW	Milk	Scrot	DC	CWT	EMA	RIB	RUMP	RBV%	IMF%	NFI-F	DOC	ANG	CLAW
EBV	-0.6	-1.1	-4.2	6.9	58	99	131	118	14	2.3	-1.6	81	10	0.4	1.6	0.4	2	0.36	-20	1.06	0.96
ACC	67%	58%	84%	83%	79%	80%	82%	77%	69%	80%	49%	73%	70%	74%	72%	70%	69%	60%	74%	81%	81%

SELECTION INDEX VALUES			
Ang Breed	Domestic	Hvy Grain	Hvy Grass
\$195	\$158	\$258	\$178

Traits observed: GL,CE,BWT,200WT,400WT,600WT,SC,Scan(EMA,Rib,Rump,IMF),Structure(Claw Set x 1, Foot Angle x 1),Genomics

EASTERN PLAINS PEMBROOKE P55^{SV} (AI)

HBR

BORN: 5/7/2018 **IDENT:** NEPP55 **GENETIC STATUS:** AMFU,CAFU,DDF,NHFU
 AYRVALE BARTEL E7^{PV} SITZ NEW DESIGN 458N[#]
SIRE: BOOROOMOOKA BARTEL K274^{SV} NGMK274 **DAM:** EASTERN PLAINS ABBA E116[#] NEPE116
 BOOROOMOOKA VORACIOUS H465[#] EASTERN PLAINS ABBA Z142^{PV}

Mid June 2022 Angus Australia Trans-Tasman Angus Cattle Evaluation (TACE)

TACE	CALVING EASE				GROWTH & MATERNAL				FERTILITY		CARCASE						STRUCTURE				
	CED	CEM	GL	BW	200	400	600	MCW	Milk	Scrot	DC	CWT	EMA	RIB	RUMP	RBV%	IMF%	NFI-F	DOC	ANG	CLAW
EBV	3	10.4	-6.7	2.8	54	96	133	128	18	2.9	-4.9	83	7.3	0.8	0.3	0.7	0.8	0.11	10	0.94	1
ACC	66%	57%	85%	84%	81%	82%	84%	79%	71%	79%	51%	74%	72%	76%	74%	72%	72%	60%	73%	81%	80%

SELECTION INDEX VALUES			
Ang Breed	Domestic	Hvy Grain	Hvy Grass
\$189	\$155	\$236	\$174

Traits observed: GL,CE,BWT,200WT,400WT,600WT,SC,Scan(EMA,Rib,Rump,IMF),Structure(Claw Set x 1, Foot Angle x 1),Genomics

EASTERN PLAINS PITNACREE P110^{SV} (Natural)

HBR

BORN: 24/7/2018 **IDENT:** NEPP110 **GENETIC STATUS:** AMFU,CAFU,DDF,NHFU
 SILVEIRAS CONVERSION 8064[#] B/R NEW DAY 454[#]
SIRE: EASTERN PLAINS MANGROVE M51^{SV} NEPM51 **DAM:** EASTERN PLAINS BERTHA J55[#] NEPJ55
 EASTERN PLAINS LACEY G20[#] EASTERN PLAINS BERTHA E44[#]

Mid June 2022 Angus Australia Trans-Tasman Angus Cattle Evaluation (TACE)

TACE	CALVING EASE				GROWTH & MATERNAL				FERTILITY		CARCASE						STRUCTURE				
	CED	CEM	GL	BW	200	400	600	MCW	Milk	Scrot	DC	CWT	EMA	RIB	RUMP	RBV%	IMF%	NFI-F	DOC	ANG	CLAW
EBV	4.9	-4.3	-4.2	3.2	49	89	108	79	25	0.6	-10	69	5.9	2.8	4.4	-2.4	2.8	0.32	-5	1.02	0.9
ACC	61%	52%	72%	82%	79%	80%	83%	77%	67%	80%	46%	72%	69%	74%	71%	70%	68%	57%	73%	81%	81%

SELECTION INDEX VALUES			
Ang Breed	Domestic	Hvy Grain	Hvy Grass
\$237	\$194	\$316	\$220

Traits observed: CE,BWT,200WT,400WT,600WT,SC,Scan(EMA,Rib,Rump,IMF),DOC,Structure(Claw Set x 1, Foot Angle x 1),Genomics



Eastern Plains Angus 2022 Reference Sires

EF COMPLEMENT 8088^{PV} (Natural)

HBR

BORN: 18/1/2008 **IDENT:** USA16198796 **GENETIC STATUS:** AMF,CAF,DDF,NHF,DWF,MAF,MHF,OHF,OSF
 C A FUTURE DIRECTION 5321# BR MIDLAND#
SIRE: BASIN FRANCHISE P142# USA14686137 **DAM:** EF EVERELDA ENTENSE 6117# USA15452880
 BASIN CHLOE 812L# H F EVERELDA ENTENSE 869#

Mid June 2022 Angus Australia Trans-Tasman Angus Cattle Evaluation (TACE)

TACE	CALVING EASE				GROWTH & MATERNAL				FERTILITY			CARCASE						STRUCTURE			
	CED	CEM	GL	BW	200	400	600	MCW	Milk	Scrot	DC	CWT	EMA	RIB	RUMP	RBY%	IMF%	NFI-F	DOC	ANG	CLAW
EBV	6	9.7	-5.4	2.9	52	97	129	96	23	1.2	-4.7	75	8.3	0.9	1.6	-0.2	1.8	0.69	8	1.32	0.96
ACC	98%	92%	99%	99%	99%	99%	99%	98%	99%	99%	88%	97%	97%	97%	97%	96%	96%	93%	99%	99%	99%

SELECTION INDEX VALUES			
Ang Breed	Domestic	Hvy Grain	Hvy Grass
\$233	\$191	\$298	\$218

Traits observed: Genomics

G A R BONFIRE^{PV} (Natural)

HBR

BORN: 14/2/2017 **IDENT:** USA18789776 **GENETIC STATUS:** AMF,CAF,DDF,NHF,MHF,OHF,OSF
 CONNEALY IN SURE 8524# G A R PROPHET^{SV}
SIRE: G A R SURE FIRE^{SV} USA17328461 **DAM:** CHAIR ROCK PROPHET 3054# USA17799512
 CHAIR ROCK 5050 G A R 8086# CHAIR ROCK 5050 G A R 1131#

Mid June 2022 Angus Australia Trans-Tasman Angus Cattle Evaluation (TACE)

TACE	CALVING EASE				GROWTH & MATERNAL				FERTILITY			CARCASE						STRUCTURE			
	CED	CEM	GL	BW	200	400	600	MCW	Milk	Scrot	DC	CWT	EMA	RIB	RUMP	RBY%	IMF%	NFI-F	DOC	ANG	CLAW
EBV	1.5	0.2	-1.1	5.1	74	128	159	140	19	2.8	-6.7	92	4.5	-2.5	-3.3	1.3	3.3	-0.31	13	1.08	1.22
ACC	72%	60%	95%	93%	88%	89%	89%	84%	79%	83%	55%	83%	81%	84%	79%	80%	81%	67%	75%	81%	81%

SELECTION INDEX VALUES			
Ang Breed	Domestic	Hvy Grain	Hvy Grass
\$288	\$243	\$398	\$272

Traits observed: Genomics

LANDFALL KEYSTONE K132^{PV} (AI)

HBR

BORN: 19/7/2014 **IDENT:** TFAK132 **GENETIC STATUS:** AMF,CAF,DDF,NHF,DWF,MAF,MHF,OHF,OSF,RGF
 BOOROOMOOKA UNDERTAKEN Y145^{PV} S A V FRONT RUNNER 0713#
SIRE: RENNYLEA EDMUND E11^{PV} NORE11 **DAM:** LANDFALL ARCHER H807^{SV} TFAH807
 LAWSONS HENRY VIII Y5# LANDFALL ARCHER X9^{PV}

Mid June 2022 Angus Australia Trans-Tasman Angus Cattle Evaluation (TACE)

TACE	CALVING EASE				GROWTH & MATERNAL				FERTILITY			CARCASE						STRUCTURE			
	CED	CEM	GL	BW	200	400	600	MCW	Milk	Scrot	DC	CWT	EMA	RIB	RUMP	RBY%	IMF%	NFI-F	DOC	ANG	CLAW
EBV	4.9	8.4	-8.2	2.2	57	110	145	116	20	0.6	-6.3	97	6.6	1.8	-1.5	0.2	2	0.46	11	1.16	0.84
ACC	94%	81%	99%	99%	98%	98%	98%	96%	95%	98%	67%	92%	91%	92%	91%	88%	89%	78%	98%	96%	96%

SELECTION INDEX VALUES			
Ang Breed	Domestic	Hvy Grain	Hvy Grass
\$247	\$206	\$319	\$232

Traits observed: GL,CE,BWT,200WT,400WT,600WT,SC,Scan(EMA,Rib,Rump,IMF),Genomics

LD CAPITALIST 316^{PV} (Natural)

HBR

BORN: 26/1/2013 **IDENT:** USA17666102 **GENETIC STATUS:** AMF,CAF,DDF,NHF,DWF,MAF,MHF,OHF,OSF,RGF
 S A V FINAL ANSWER 0035# C A FUTURE DIRECTION 5321#
SIRE: CONNEALY CAPITALIST 028# USA16752262 **DAM:** LD DIXIE ERICA 2053# USA14407230
 PRIDES PITA OF CONANGA 8821# LD DIXIE ERICA OAR 0853#

Mid June 2022 Angus Australia Trans-Tasman Angus Cattle Evaluation (TACE)

TACE	CALVING EASE				GROWTH & MATERNAL				FERTILITY			CARCASE						STRUCTURE			
	CED	CEM	GL	BW	200	400	600	MCW	Milk	Scrot	DC	CWT	EMA	RIB	RUMP	RBY%	IMF%	NFI-F	DOC	ANG	CLAW
EBV	12.2	11.8	-4.1	2.1	52	92	114	95	14	1.2	-2.4	74	9	1.2	0.2	0.1	2.1	0.54	-9	0.86	0.84
ACC	96%	84%	99%	99%	99%	99%	99%	98%	97%	98%	72%	95%	94%	94%	94%	92%	93%	83%	98%	99%	99%

SELECTION INDEX VALUES			
Ang Breed	Domestic	Hvy Grain	Hvy Grass
\$219	\$185	\$289	\$202

Traits observed: Genomics



Eastern Plains Angus 2022 Sale Bulls

LOT 1**EASTERN PLAINS RENO R56^{SV} (AI)****APR**

BORN: 30/7/2020 **IDENT:** NEPR56 **GENETIC STATUS:** AMFU,CAFU,DDFU,NHFU
 G A R PROPHET^{SV} CLUDEN NEWRY EQUATOR F10^{SV}
SIRE: BALDRIDGE BEAST MODE B074^{PV} USA17960722 **DAM:** EASTERN PLAINS MISS EDA L80[#] NEPL80
 BALDRIDGE ISABEL Y69[#] EASTERN PLAINS MISS EDA B120[#]

Mid June 2022 Angus Australia Trans-Tasman Angus Cattle Evaluation (TACE)

TACE	CALVING EASE				GROWTH & MATERNAL					FERTILITY		CARCASE						STRUCTURE			
	CED	CEM	GL	BW	200	400	600	MCW	Milk	Scrot	DC	CWT	EMA	RIB	RUMP	RBV%	IMF%	NFI-F	DOC	ANG	CLAW
EBV	3	5.3	-4.9	4.1	63	107	136	118	16	3.6	-6.4	75	4.3	0	-0.9	0.9	2.1	0.15	7	0.7	0.6
ACC	61%	52%	85%	75%	70%	71%	74%	70%	63%	74%	42%	63%	62%	63%	63%	60%	59%	51%	57%	67%	67%

SELECTION INDEX VALUES				BEEFCLASS STRUCTURAL ASSESSMENT SCORES									
Ang Breed	Domestic	Hvy Grain	Hvy Grass	F Claw Set	R Claw Set	F Ang	R Ang	R Leg Side	R Leg Hind	Mus Sc	Temp	Sheath	
\$250	\$212	\$327	\$233	6	5	5	5	5	5	C+	2	4	

Traits observed: GL,BWT,200WT,400WT,600WT,SC,Scan(EMA,Rib,Rump,IMF),DOC, Structure(Claw Set x 1, Foot Angle x 1)

Used as a yearling over Commercial Cows in our Spring 2021 joining program. A high indexing bull ranking in the top 10% of the breed across all indexes. Outstanding genetic merit for structural traits & fertility, along with a moderate birthweight & high growth.



Scrotal Circumference: 41cm
Sperm Motility: 50.0%
Sperm Morphology: 51.0%

Purchaser..... \$.....

LOT 2**EASTERN PLAINS RAYBURN R30^{SV} (AI)****HBR**

BORN: 15/7/2020 **IDENT:** NEPR30 **GENETIC STATUS:** AMFU,CAFU,DDFU,NHFU
 TE MANIA FOE F734^{SV} EF COMPLEMENT 8088^{PV}
SIRE: CHILTERN PARK MOE M6^{PV} GTNM6 **DAM:** EASTERN PLAINS LACEY P151[#] NEPP151
 STRATHEWEN TIMEOUT JADE F15^{PV} EASTERN PLAINS LACEY G20[#]

Mid June 2022 Angus Australia Trans-Tasman Angus Cattle Evaluation (TACE)

TACE	CALVING EASE				GROWTH & MATERNAL					FERTILITY		CARCASE						STRUCTURE			
	CED	CEM	GL	BW	200	400	600	MCW	Milk	Scrot	DC	CWT	EMA	RIB	RUMP	RBV%	IMF%	NFI-F	DOC	ANG	CLAW
EBV	8.9	9	-0.8	3.4	56	107	142	101	28	0.7	-4.7	81	6.6	-1.7	-1.5	0.5	2	0.05	15	0.66	0.7
ACC	61%	53%	84%	74%	72%	71%	73%	70%	65%	72%	45%	67%	65%	70%	66%	66%	65%	59%	58%	75%	74%

SELECTION INDEX VALUES				BEEFCLASS STRUCTURAL ASSESSMENT SCORES									
Ang Breed	Domestic	Hvy Grain	Hvy Grass	F Claw Set	R Claw Set	F Ang	R Ang	R Leg Side	R Leg Hind	Mus Sc	Temp	Sheath	
\$250	\$206	\$325	\$234	7	6	7	6	6	6	C+	2	4	

Traits observed: GL,CE,BWT,200WT,400WT,600WT,SC,Scan(EMA,Rib,Rump,IMF),DOC, Structure(Claw Set x 1, Foot Angle x 1),Genomics

Used as a yearling as a back-up bull over Stud Heifers following our Spring 2021 AI program. Ranks in top 10% of the breed for all maternal indexes. A moderate birthweight, high growth bull with strong genetic merit for structural traits.



Scrotal Circumference: 42cm
Sperm Motility: 65.0%
Sperm Morphology: 69.5%

Purchaser..... \$.....

LOT 3**EASTERN PLAINS RIMBANDA R75^{SV} (AI)****HBR**

BORN: 3/8/2020 **IDENT:** NEPR75 **GENETIC STATUS:** AMFU,CAFU,DDF,NHFU
 G A R PROPHET^{SV} SYDGEN BLACK PEARL 2006^{PV}
SIRE: BALDRIDGE BEAST MODE B074^{PV} USA17960722 **DAM:** EASTERN PLAINS ABBA L70[#] NEPL70
 BALDRIDGE ISABEL Y69[#] EASTERN PLAINS ABBA G42[#]

Mid June 2022 Angus Australia Trans-Tasman Angus Cattle Evaluation (TACE)

TACE	CALVING EASE				GROWTH & MATERNAL					FERTILITY		CARCASE						STRUCTURE			
	CED	CEM	GL	BW	200	400	600	MCW	Milk	Scrot	DC	CWT	EMA	RIB	RUMP	RBV%	IMF%	NFI-F	DOC	ANG	CLAW
EBV	4.9	7.5	-3.9	3.2	63	101	129	98	16	1.6	-4.9	75	6.3	-0.6	-2	1.2	2	0.02	18	0.86	0.78
ACC	62%	53%	85%	75%	70%	71%	74%	70%	63%	73%	43%	63%	62%	63%	63%	60%	59%	52%	58%	67%	67%

SELECTION INDEX VALUES				BEEFCLASS STRUCTURAL ASSESSMENT SCORES									
Ang Breed	Domestic	Hvy Grain	Hvy Grass	F Claw Set	R Claw Set	F Ang	R Ang	R Leg Side	R Leg Hind	Mus Sc	Temp	Sheath	
\$271	\$224	\$358	\$252	6	6	5	5	5	5	C+	2	4	

Traits observed: GL,BWT,200WT,400WT,600WT,SC,Scan(EMA,Rib,Rump,IMF),DOC, Structure(Claw Set x 1, Foot Angle x 1)

A very high indexing bull who offers high growth genetics combined with moderate birthweight & mature cow weight. A very sound bull with strong genetic merit for structural & carcass traits.



Scrotal Circumference: 41.5cm
Sperm Motility: 90.0%
Sperm Morphology: 75.5%

Purchaser..... \$.....



LOT 4 **EASTERN PLAINS RAMAJON R49^{SV} (AI)** **HBR**

BORN: 28/7/2020 **IDENT:** NEPR49 **GENETIC STATUS:** AMFU,CAFU,DDFU,NHFU
TE MANIA FOE F734^{SV} TE MANIA EMPEROR E343^{PV}
SIRE: CHILTERN PARK MOE M6^{PV} GTNM6 **DAM:** EASTERN PLAINS ABBA P107# NEPP107
STRATHEWEN TIMEOUT JADE F15^{PV} EASTERN PLAINS ABBA F89^{SV}

Mid June 2022 Angus Australia Trans-Tasman Angus Cattle Evaluation (TACE)

TACE	CALVING EASE				GROWTH & MATERNAL				FERTILITY			CARCASE						STRUCTURE			
	CED	CEM	GL	BW	200	400	600	MCW	Milk	Scrot	DC	CWT	EMA	RIB	RUMP	RBY%	IMF%	NFI-F	DOC	ANG	CLAW
EBV	2.8	4.3	-6.1	5.7	60	109	147	127	19	2	-6.4	78	7.2	-0.7	-0.8	0.8	1.7	0.17	15	1.22	1.04
ACC	60%	50%	83%	74%	69%	70%	73%	66%	59%	73%	43%	62%	61%	62%	62%	59%	59%	54%	58%	66%	66%

SELECTION INDEX VALUES				BEEFCLASS STRUCTURAL ASSESSMENT SCORES								
Ang Breed	Domestic	Hvy Grain	Hvy Grass	F Claw Set	R Claw Set	F Ang	R Ang	R Leg Side	R Leg Hind	Mus Sc	Temp	Sheath
\$228	\$190	\$288	\$211	7	6	7	6	6	5	C+	2	4

Traits observed: GL,CE,BWT,200WT,400WT,600WT,SC,Scan(EMA,Rib,Rump,IMF),DOC, Structure(Claw Set x 1, Foot Angle x 1)

Used as a yearling over Commercial Cows in our Spring 2021 joining program. Strong genetic merit for fertility & growth. Dam is a first calf heifer.



Scrotal Circumference: 39.5cm
Sperm Motility: TBA
Sperm Morphology: TBA

Purchaser..... \$.....

LOT 5 **EASTERN PLAINS ROCKLEY R81^{SV} (AI)** **HBR**

BORN: 5/8/2020 **IDENT:** NEPR81 **GENETIC STATUS:** AMFU,CAFU,DDFU,NHFU
G A R PROPHET^{SV} CLUDEN NEWRY EQUATOR F10^{SV}
SIRE: BALDRIDGE BEAST MODE B074^{PV} USA17960722 **DAM:** EASTERN PLAINS BERTHA K174# NEPK174
BALDRIDGE ISABEL Y69^F EASTERN PLAINS BERTHA E57^{SV}

Mid June 2022 Angus Australia Trans-Tasman Angus Cattle Evaluation (TACE)

TACE	CALVING EASE				GROWTH & MATERNAL				FERTILITY			CARCASE						STRUCTURE			
	CED	CEM	GL	BW	200	400	600	MCW	Milk	Scrot	DC	CWT	EMA	RIB	RUMP	RBY%	IMF%	NFI-F	DOC	ANG	CLAW
EBV	-2.7	4.4	-1.2	5.8	63	106	139	126	15	1.6	-6	75	6	-1.8	-2.3	1.3	1.8	-0.28	6	0.68	0.52
ACC	63%	55%	84%	74%	73%	72%	74%	72%	69%	73%	45%	68%	66%	70%	67%	67%	66%	56%	59%	76%	76%

SELECTION INDEX VALUES				BEEFCLASS STRUCTURAL ASSESSMENT SCORES								
Ang Breed	Domestic	Hvy Grain	Hvy Grass	F Claw Set	R Claw Set	F Ang	R Ang	R Leg Side	R Leg Hind	Mus Sc	Temp	Sheath
\$224	\$188	\$293	\$204	6	6	6	6	5	6	C+	1	4

Traits observed: GL,BWT,200WT,400WT,600WT,SC,Scan(EMA,Rib,Rump,IMF),DOC, Structure(Claw Set x 1, Foot Angle x 1),Genomics

Used as a yearling as a cover sire & as a back-up bull over Stud Cows for our Spring 2021 joining program. Outstanding genetic merit for both structural traits ranking in the top 5% of the breed. A high growth bull with good fertility.



Scrotal Circumference: 41.5cm
Sperm Motility: 82.0%
Sperm Morphology: 82.0%

Purchaser..... \$.....

LOT 6 **EASTERN PLAINS REDLANDS R45^{SV} (AI)** **HBR**

BORN: 28/7/2020 **IDENT:** NEPR45 **GENETIC STATUS:** AMFU,CAFU,DDFU,NHFU
TE MANIA FOE F734^{SV} TE MANIA EMPEROR E343^{PV}
SIRE: CHILTERN PARK MOE M6^{PV} GTNM6 **DAM:** EASTERN PLAINS ABBA P115# NEPP115
STRATHEWEN TIMEOUT JADE F15^{PV} EASTERN PLAINS ABBA F89^{SV}

Mid June 2022 Angus Australia Trans-Tasman Angus Cattle Evaluation (TACE)

TACE	CALVING EASE				GROWTH & MATERNAL				FERTILITY			CARCASE						STRUCTURE			
	CED	CEM	GL	BW	200	400	600	MCW	Milk	Scrot	DC	CWT	EMA	RIB	RUMP	RBY%	IMF%	NFI-F	DOC	ANG	CLAW
EBV	4.7	3.5	-7.6	4.6	59	110	139	120	25	1.5	-6.4	79	3.2	0	-0.8	0.3	1.4	0.17	14	1.08	0.98
ACC	61%	54%	83%	74%	72%	72%	73%	71%	66%	72%	46%	68%	66%	70%	67%	67%	66%	59%	59%	74%	74%

SELECTION INDEX VALUES				BEEFCLASS STRUCTURAL ASSESSMENT SCORES								
Ang Breed	Domestic	Hvy Grain	Hvy Grass	F Claw Set	R Claw Set	F Ang	R Ang	R Leg Side	R Leg Hind	Mus Sc	Temp	Sheath
\$220	\$192	\$283	\$198	6	6	6	6	5	5	C+	2	4

Traits observed: GL,CE,BWT,200WT,400WT,600WT,SC,Scan(EMA,Rib,Rump,IMF),DOC, Structure(Claw Set x 1, Foot Angle x 1),Genomics

Used as a yearling as a cover sire & as a back-up bull over Stud Cows in our Spring 2021 joining program. A high growth bull out of a first calf heifer.



Scrotal Circumference: 42.5cm
Sperm Motility: 87.0%
Sperm Morphology: 67.0%

Purchaser..... \$.....



Eastern Plains Angus 2022 Sale Bulls

LOT 7

EASTERN PLAINS ROYCE R124^{SV} (Natural)

HBR

BORN: 26/8/2020 **IDENT:** NEPR124 **GENETIC STATUS:** AMFU,CAFU,DDFU,NHFU
 BOOROOMOOKA BARTEL K274^{SV} PRIME JUGGERNAUT J15^{SV}
SIRE: EASTERN PLAINS PEMBROOKE P55^{SV} NEPP55 **DAM:** EASTERN PLAINS LACEY N70[#] NEPN70
 EASTERN PLAINS ABBA E116[#] EASTERN PLAINS LACEY G20[#]

Mid June 2022 Angus Australia Trans-Tasman Angus Cattle Evaluation (TACE)

TACE	CALVING EASE				GROWTH & MATERNAL					FERTILITY		CARCASE						STRUCTURE			
	CED	CEM	GL	BW	200	400	600	MCW	Milk	Scrot	DC	CWT	EMA	RIB	RUMP	RBV%	IMF%	NFI-F	DOC	ANG	CLAW
EBV	-1.1	3.7	-4.5	5.2	55	97	132	123	19	2.2	-5.4	81	6.8	-1	-1.8	1.5	1.3	-0.01	3	0.84	0.88
ACC	52%	45%	64%	72%	67%	68%	72%	66%	55%	69%	39%	58%	57%	59%	59%	55%	54%	45%	50%	63%	61%

SELECTION INDEX VALUES				BEEFCLASS STRUCTURAL ASSESSMENT SCORES									
Ang Breed	Domestic	Hvy Grain	Hvy Grass	F Claw Set	R Claw Set	F Ang	R Ang	R Leg Side	R Leg Hind	Mus Sc	Temp	Sheath	
\$192	\$159	\$245	\$174	6	6	5	6	5	6	C+	2	5	

Traits observed: BWT,200WT,400WT,600WT,SC,Scan(EMA,Rib,Rump,IMF),DOC, Structure(Claw Set x 1, Foot Angle x 1)

Used as a yearling over Commercial Cows in our Spring 2021 joining program. A strong growth bull with good genetic merit for both Days to Calving & Scrotal Size fertility traits.



Scrotal Circumference: 45cm
Sperm Motility: 63.0%
Sperm Morphology: 63.5%

Purchaser..... \$.....

LOT 8

EASTERN PLAINS RAVENSDALE R65^{SV} (AI)

HBR

BORN: 1/8/2020 **IDENT:** NEPR65 **GENETIC STATUS:** AMFU,CAFU,DDFU,NHFU
 EF COMMANDO 1366^{PV} EASTERN PLAINS GARRETT G23^{SV}
SIRE: BALDRIDGE 38 SPECIAL^{PV} USA18229487 **DAM:** EASTERN PLAINS ABBA J135[#] NEPJ135
 BALDRIDGE ISABEL Y69[#] EASTERN PLAINS ABBA F28[#]

Mid June 2022 Angus Australia Trans-Tasman Angus Cattle Evaluation (TACE)

TACE	CALVING EASE				GROWTH & MATERNAL					FERTILITY		CARCASE						STRUCTURE			
	CED	CEM	GL	BW	200	400	600	MCW	Milk	Scrot	DC	CWT	EMA	RIB	RUMP	RBV%	IMF%	NFI-F	DOC	ANG	CLAW
EBV	3.4	3.4	-4.4	3.6	58	101	130	103	19	2.2	-4.4	70	5.3	-0.4	-0.6	0	2.1	0.3	6	0.76	0.7
ACC	56%	45%	84%	75%	70%	71%	74%	67%	59%	73%	38%	60%	60%	61%	61%	57%	56%	46%	56%	66%	66%

SELECTION INDEX VALUES				BEEFCLASS STRUCTURAL ASSESSMENT SCORES									
Ang Breed	Domestic	Hvy Grain	Hvy Grass	F Claw Set	R Claw Set	F Ang	R Ang	R Leg Side	R Leg Hind	Mus Sc	Temp	Sheath	
\$228	\$188	\$302	\$210	7	6	6	7	6	5	C+	2	4	

Traits observed: GL,BWT,200WT,400WT,600WT,SC,Scan(EMA,Rib,Rump,IMF),DOC, Structure(Claw Set x 1, Foot Angle x 1)

A high indexing bull used as a yearling over Commercial Cows in our Spring 2021 joining program. He offers high growth but moderate birthweight & mature cow weight. A very sound bull with outstanding genetic merit for structural traits.



Scrotal Circumference: 39cm
Sperm Motility: 71.0%
Sperm Morphology: 82.0%

Purchaser..... \$.....

LOT 9

EASTERN PLAINS REGATTA R19^{SV} (AI)

HBR

BORN: 10/7/2020 **IDENT:** NEPR19 **GENETIC STATUS:** AMFU,CAFU,DDFU,NHFU
 TE MANIA FOE F734^{SV} EASTERN PLAINS MARAMA M47^{SV}
SIRE: CHILTERN PARK MOE M6^{PV} GTNM6 **DAM:** EASTERN PLAINS ABBA P158[#] NEPP158
 STRATHEWEN TIMEOUT JADE F15^{PV} EASTERN PLAINS ABBA F70[#]

Mid June 2022 Angus Australia Trans-Tasman Angus Cattle Evaluation (TACE)

TACE	CALVING EASE				GROWTH & MATERNAL					FERTILITY		CARCASE						STRUCTURE			
	CED	CEM	GL	BW	200	400	600	MCW	Milk	Scrot	DC	CWT	EMA	RIB	RUMP	RBV%	IMF%	NFI-F	DOC	ANG	CLAW
EBV	7.4	5.3	-5.7	2.8	50	96	124	89	24	2.8	-5.3	73	7	-0.7	-0.6	0.8	1.6	0.22	18	1	0.78
ACC	58%	46%	83%	74%	69%	70%	73%	67%	58%	72%	40%	61%	60%	62%	61%	57%	57%	51%	55%	64%	64%

SELECTION INDEX VALUES				BEEFCLASS STRUCTURAL ASSESSMENT SCORES									
Ang Breed	Domestic	Hvy Grain	Hvy Grass	F Claw Set	R Claw Set	F Ang	R Ang	R Leg Side	R Leg Hind	Mus Sc	Temp	Sheath	
\$224	\$190	\$282	\$208	6	6	5	5	4	5	C+	1	4	

Traits observed: GL,CE,BWT,200WT,400WT,600WT,SC,Scan(EMA,Rib,Rump,IMF),DOC, Structure(Claw Set x 1, Foot Angle x 1)

Used as a yearling over Commercial Heifers in our Spring 2021 joining program. Out of a first calf heifer, he offers good calving ease, low birthweight & high fertility.



Scrotal Circumference: 43cm
Sperm Motility: 68.0%
Sperm Morphology: 74.5%

Purchaser..... \$.....



LOT 10 EASTERN PLAINS ABBA R59^{SV} (AI) HBR

BORN: 31/7/2020 **IDENT:** NEPR59 **GENETIC STATUS:** AMFU,CAFU,DDFU,NHFU
EF COMMANDO 1366^{PV} SYDGEN BLACK PEARL 2006^{PV}
SIRE: BALDRIDGE 38 SPECIAL^{PV} USA18229487 **DAM:** EASTERN PLAINS ABBA L91# NEPL91
BALDRIDGE ISABEL Y69# EASTERN PLAINS ABBA F100#

Mid June 2022 Angus Australia Trans-Tasman Angus Cattle Evaluation (TACE)

TACE	CALVING EASE				GROWTH & MATERNAL				FERTILITY		CARCASE						STRUCTURE				
	CED	CEM	GL	BW	200	400	600	MCW	Milk	Scrot	DC	CWT	EMA	RIB	RUMP	RBY%	IMF%	NFI-F	DOC	ANG	CLAW
EBV	7.2	7.7	-7.7	2.5	52	90	120	93	21	2.1	-4.9	67	6.2	0.1	-1.7	0.1	2.9	0.48	10	0.8	0.8
ACC	60%	51%	85%	75%	73%	73%	74%	71%	66%	73%	43%	67%	66%	70%	67%	66%	65%	56%	58%	76%	75%

SELECTION INDEX VALUES				BEEFCLASS STRUCTURAL ASSESSMENT SCORES								
Ang Breed	Domestic	Hvy Grain	Hvy Grass	F Claw Set	R Claw Set	F Ang	R Ang	R Leg Side	R Leg Hind	Mus Sc	Temp	Sheath
\$228	\$180	\$307	\$212	7	6	5	5	5	5	C+	1	4

Traits observed: GL,BWT,200WT,400WT,600WT,SC,Scan(EMA,Rib,Rump,IMF),DOC, Structure(Claw Set x 1, Foot Angle x 1),Genomics

Used as a yearling as a back-up bull over Stud Heifers following our Spring 2021 AI program. He offers good calving ease, low birthweight & high fertility. Ranks in the top 20% of the breed for IMF with strong genetic merit for structural traits.



Scrotal Circumference: 44cm
Sperm Motility: 87.0%
Sperm Morphology: 70.0%

Purchaser..... \$.....

LOT 11 EASTERN PLAINS REDFERN R64^{SV} (AI) APR

BORN: 1/8/2020 **IDENT:** NEPR64 **GENETIC STATUS:** AMFU,CAFU,DDFU,NHFU
G A R PROPHET^{SV} SYDGEN BLACK PEARL 2006^{PV}
SIRE: BALDRIDGE BEAST MODE B074^{PV} USA17960722 **DAM:** EASTERN PLAINS DAISEY L42# NEPL42
BALDRIDGE ISABEL Y69# EASTERN PLAINS DAISEY F105#

Mid June 2022 Angus Australia Trans-Tasman Angus Cattle Evaluation (TACE)

TACE	CALVING EASE				GROWTH & MATERNAL				FERTILITY		CARCASE						STRUCTURE				
	CED	CEM	GL	BW	200	400	600	MCW	Milk	Scrot	DC	CWT	EMA	RIB	RUMP	RBY%	IMF%	NFI-F	DOC	ANG	CLAW
EBV	5.9	7.5	-4.9	2.4	61	101	125	94	17	2.7	-6.5	76	6.4	-0.1	-1.2	0.9	2.2	0.22	16	0.82	0.64
ACC	62%	53%	85%	75%	70%	71%	74%	69%	63%	73%	44%	63%	62%	63%	63%	60%	59%	52%	59%	67%	67%

SELECTION INDEX VALUES				BEEFCLASS STRUCTURAL ASSESSMENT SCORES								
Ang Breed	Domestic	Hvy Grain	Hvy Grass	F Claw Set	R Claw Set	F Ang	R Ang	R Leg Side	R Leg Hind	Mus Sc	Temp	Sheath
\$276	\$233	\$364	\$260	6	6	6	6	5	5	C+	1	4

Traits observed: GL,BWT,200WT,400WT,600WT,SC,Scan(EMA,Rib,Rump,IMF),DOC, Structure(Claw Set x 1, Foot Angle x 1)

This bull offers outstanding genetic merit across the full range of traits; calving ease, growth, fertility, carcass, structure & temperament. Ranks in the top 5% of the breed for all indexes. High growth genetics but moderate mature cow weight with low birthweight & good calving ease. Superb genetic merit for structural traits & fertility.



Scrotal Circumference: 42cm
Sperm Motility: 84.0%
Sperm Morphology: 76.5%

Purchaser..... \$.....

LOT 12 EASTERN PLAINS READE RADEL R77^{SV} (AI) HBR

BORN: 3/8/2020 **IDENT:** NEPR77 **GENETIC STATUS:** AMFU,CAFU,DDFU,NHFU
G A R PROPHET^{SV} TE MANIA INFINITY 04 379 AB#
SIRE: BALDRIDGE BEAST MODE B074^{PV} USA17960722 **DAM:** EASTERN PLAINS EDA F22# NEPF22
BALDRIDGE ISABEL Y69# EASTERN PLAINS EDA C14#

Mid June 2022 Angus Australia Trans-Tasman Angus Cattle Evaluation (TACE)

TACE	CALVING EASE				GROWTH & MATERNAL				FERTILITY		CARCASE						STRUCTURE				
	CED	CEM	GL	BW	200	400	600	MCW	Milk	Scrot	DC	CWT	EMA	RIB	RUMP	RBY%	IMF%	NFI-F	DOC	ANG	CLAW
EBV	2.7	3.6	-3	3.6	58	101	121	107	11	2.5	-5.6	64	4.2	-2	-2.1	0.6	2.7	0.21	13	0.74	0.64
ACC	62%	54%	85%	75%	71%	72%	75%	70%	65%	75%	45%	64%	63%	64%	64%	61%	60%	53%	60%	68%	68%

SELECTION INDEX VALUES				BEEFCLASS STRUCTURAL ASSESSMENT SCORES								
Ang Breed	Domestic	Hvy Grain	Hvy Grass	F Claw Set	R Claw Set	F Ang	R Ang	R Leg Side	R Leg Hind	Mus Sc	Temp	Sheath
\$230	\$199	\$308	\$211	6	6	6	6	6	6	C+	1	5

Traits observed: GL,BWT,200WT,400WT,600WT,SC,Scan(EMA,Rib,Rump,IMF),DOC, Structure(Claw Set x 1, Foot Angle x 1)

Used as a yearling over Commercial Cows in our Spring 2021 joining program. A high indexing bull who offers good fertility & calving ease + moderate birthweight with high growth. Very strong genetic merit for structural traits.



Scrotal Circumference: 42.5cm
Sperm Motility: 63.0%
Sperm Morphology: 61.0%

Purchaser..... \$.....



Eastern Plains Angus 2022 Sale Bulls

LOT 13**EASTERN PLAINS RAZORBACK R70^{SV} (AI)****HBR****BORN:** 2/8/2020**IDENT:** NEPR70**GENETIC STATUS:** AMFU,CAFU,DDFU,NHFUG A R SURE FIRE^{SV}CARABAR DOCKLANDS D62^{PV}**SIRE:** G A R BONFIRE^{PV} USA18789776**DAM:** EASTERN PLAINS ABBA K41[#] NEPK41CHAIR ROCK PROPHET 3054[#]EASTERN PLAINS ABBA F70[#]**Mid June 2022 Angus Australia Trans-Tasman Angus Cattle Evaluation (TACE)**

TACE	CALVING EASE				GROWTH & MATERNAL					FERTILITY		CARCASE						STRUCTURE			
	CED	CEM	GL	BW	200	400	600	MCW	Milk	Scrot	DC	CWT	EMA	RIB	RUMP	RBV%	IMF%	NFI-F	DOC	ANG	CLAW
EBV	4.2	0.5	-5.2	4.3	62	109	140	117	22	3.5	-7.4	84	6.2	-1.2	-2	1.6	2.2	0.01	-9	1.22	1.14
ACC	55%	47%	85%	74%	69%	70%	73%	68%	59%	71%	43%	61%	60%	62%	62%	60%	58%	49%	51%	63%	63%

SELECTION INDEX VALUES				BEEFCLASS STRUCTURAL ASSESSMENT SCORES									
Ang Breed	Domestic	Hvy Grain	Hvy Grass	F Claw Set	R Claw Set	F Ang	R Ang	R Leg Side	R Leg Hind	Mus Sc	Temp	Sheath	
\$259	\$219	\$338	\$243	6	6	5	6	5	6	C+	2	4	

Traits observed: GL,BWT,200WT,400WT,600WT,SC,Scan(EMA,Rib,Rump,IMF),DOC, Structure(Claw Set x 1, Foot Angle x 1)

A very high indexing bull with tremendous genetic merit for fertility. He offers high growth & good carcass attributes.



Scrotal Circumference: 47cm
Sperm Motility: 67.0%
Sperm Morphology: 69.0%

Purchaser..... \$.....

LOT 14**EASTERN PLAINS RANDWICK R35^{SV} (AI)****HBR****BORN:** 16/7/2020**IDENT:** NEPR35**GENETIC STATUS:** AMFU,CAFU,DDF,NHFUEF COMMANDO 1366^{PV}LAWSONS DINKY-DI Z191^{SV}**SIRE:** BALDRIDGE 38 SPECIAL^{PV} USA18229487**DAM:** EASTERN PLAINS ABBA G76[#] NEPG76BALDRIDGE ISABEL Y69[#]EASTERN PLAINS ABBA A59[#]**Mid June 2022 Angus Australia Trans-Tasman Angus Cattle Evaluation (TACE)**

TACE	CALVING EASE				GROWTH & MATERNAL					FERTILITY		CARCASE						STRUCTURE			
	CED	CEM	GL	BW	200	400	600	MCW	Milk	Scrot	DC	CWT	EMA	RIB	RUMP	RBV%	IMF%	NFI-F	DOC	ANG	CLAW
EBV	6.3	4.8	-2	3.3	52	86	109	81	17	0.9	-4.9	58	3.7	-0.3	-1	-0.2	2.3	0.01	7	0.84	0.7
ACC	58%	48%	85%	76%	71%	72%	74%	68%	61%	73%	42%	62%	62%	62%	63%	58%	58%	49%	58%	67%	66%

SELECTION INDEX VALUES				BEEFCLASS STRUCTURAL ASSESSMENT SCORES									
Ang Breed	Domestic	Hvy Grain	Hvy Grass	F Claw Set	R Claw Set	F Ang	R Ang	R Leg Side	R Leg Hind	Mus Sc	Temp	Sheath	
\$225	\$184	\$301	\$206	6	6	5	6	5	5	C+	1	5	

Traits observed: GL,BWT,200WT,400WT,600WT,SC,Scan(EMA,Rib,Rump,IMF),DOC, Structure(Claw Set x 1, Foot Angle x 1)

Used as a yearling over Commercial Cows in our Spring 2021 joining program. He offers good calving ease with moderate birthweight. Good genetic merit for structural traits & IMF.



Scrotal Circumference: 39cm
Sperm Motility: 75.0%
Sperm Morphology: 60.0%

Purchaser..... \$.....

LOT 15**EASTERN PLAINS RUGBY R39^{SV} (AI)****HBR****BORN:** 23/7/2020**IDENT:** NEPR39**GENETIC STATUS:** AMFU,CAFU,DDFU,NHFUG A R SURE FIRE^{SV}SYDGEN BLACK PEARL 2006^{PV}**SIRE:** G A R BONFIRE^{PV} USA18789776**DAM:** EASTERN PLAINS IDA L120[#] NEPL120CHAIR ROCK PROPHET 3054[#]EASTERN PLAINS IDA E88[#]**Mid June 2022 Angus Australia Trans-Tasman Angus Cattle Evaluation (TACE)**

TACE	CALVING EASE				GROWTH & MATERNAL					FERTILITY		CARCASE						STRUCTURE			
	CED	CEM	GL	BW	200	400	600	MCW	Milk	Scrot	DC	CWT	EMA	RIB	RUMP	RBV%	IMF%	NFI-F	DOC	ANG	CLAW
EBV	-10.4	-0.6	2	8.4	63	108	144	148	19	4.1	-5.6	76	6.2	-0.7	-1.1	1.6	2.3	0.02	-11	1.2	1.18
ACC	57%	51%	84%	74%	71%	71%	73%	70%	65%	71%	44%	67%	64%	69%	66%	67%	65%	56%	51%	74%	73%

SELECTION INDEX VALUES				BEEFCLASS STRUCTURAL ASSESSMENT SCORES									
Ang Breed	Domestic	Hvy Grain	Hvy Grass	F Claw Set	R Claw Set	F Ang	R Ang	R Leg Side	R Leg Hind	Mus Sc	Temp	Sheath	
\$185	\$150	\$251	\$168	6	6	5	5	5	5	C+	2	4	

Traits observed: GL,BWT,200WT,400WT,600WT,SC,Scan(EMA,Rib,Rump,IMF),DOC, Structure(Claw Set x 1, Foot Angle x 1), Genomics

Used as a yearling as a cover sire & as a back-up bull over Stud Cows in our Spring 2021 joining program. A very high growth bull with good carcass attributes & high fertility genetics.



Scrotal Circumference: 44.5cm
Sperm Motility: 64.0%
Sperm Morphology: 72.0%

Purchaser..... \$.....



LOT 16 EASTERN PLAINS ROCHESTER R80 SV (AI) HBR

BORN: 5/8/2020 **IDENT:** NEPR80 **GENETIC STATUS:** AMFU,CAFU,DDFU,NHFU
TE MANIA FOE F734^{SV} LD CAPITALIST 316^{PV}
SIRE: CHILTERN PARK MOE M6^{PV} GTNM6 **DAM:** EASTERN PLAINS EDA P161# NEPP161
STRATHEWEN TIMEOUT JADE F15^{PV} EASTERN PLAINS EDA M115[#]

Mid June 2022 Angus Australia Trans-Tasman Angus Cattle Evaluation (TACE)

TACE	CALVING EASE				GROWTH & MATERNAL				FERTILITY			CARCASE						STRUCTURE			
	CED	CEM	GL	BW	200	400	600	MCW	Milk	Scrot	DC	CWT	EMA	RIB	RUMP	RBY%	IMF%	NFI-F	DOC	ANG	CLAW
EBV	8.1	6.5	-1.2	3.4	55	101	138	104	22	2	-3	74	7.3	-0.9	-1.2	0.7	1.8	0.23	-2	1.16	0.96
ACC	60%	49%	84%	74%	69%	70%	72%	66%	58%	72%	41%	61%	60%	62%	61%	58%	58%	53%	57%	66%	65%

SELECTION INDEX VALUES				BEEFCLASS STRUCTURAL ASSESSMENT SCORES								
Ang Breed	Domestic	Hvy Grain	Hvy Grass	F Claw Set	R Claw Set	F Ang	R Ang	R Leg Side	R Leg Hind	Mus Sc	Temp	Sheath
\$229	\$184	\$297	\$214	8	6	7	6	5	6	C	1	4

Traits observed: GL,CE,BWT,200WT,400WT,600WT,SC,Scan(EMA,Rib,Rump,IMF),DOC, Structure(Claw Set x 1, Foot Angle x 1)

Used as a yearling over Commercial Heifers in our Spring 2021 joining program. Out of a first calf heifer, he offers good calving ease, high growth but with moderate birthweight & mature cow weight.



Scrotal Circumference: 40cm
Sperm Motility: 90.0%
Sperm Morphology: 70.5%

Purchaser..... \$.....

LOT 17 EASTERN PLAINS REDBANK R60 SV (AI) APR

BORN: 31/7/2020 **IDENT:** NEPR60 **GENETIC STATUS:** AMFU,CAFU,DDFU,NHFU
EF COMMANDO 1366^{PV} KAROO A241 EQUATOR E39^{PV}
SIRE: BALDRIDGE 38 SPECIAL^{PV} USA18229487 **DAM:** EASTERN PLAINS DAISEY K138# NEPK138
BALDRIDGE ISABEL Y69[#] EASTERN PLAINS DAISEY G108[#]

Mid June 2022 Angus Australia Trans-Tasman Angus Cattle Evaluation (TACE)

TACE	CALVING EASE				GROWTH & MATERNAL				FERTILITY			CARCASE						STRUCTURE			
	CED	CEM	GL	BW	200	400	600	MCW	Milk	Scrot	DC	CWT	EMA	RIB	RUMP	RBY%	IMF%	NFI-F	DOC	ANG	CLAW
EBV	4	3.7	-5.5	4.4	57	103	129	122	22	2.4	-6	76	4.6	-1.4	-2.1	0.7	2.3	-0.01	-6	0.92	0.68
ACC	57%	45%	85%	75%	71%	71%	74%	68%	60%	73%	39%	61%	61%	61%	62%	57%	57%	47%	57%	67%	66%

SELECTION INDEX VALUES				BEEFCLASS STRUCTURAL ASSESSMENT SCORES								
Ang Breed	Domestic	Hvy Grain	Hvy Grass	F Claw Set	R Claw Set	F Ang	R Ang	R Leg Side	R Leg Hind	Mus Sc	Temp	Sheath
\$213	\$183	\$285	\$194	6	6	6	6	5	5	C+	2	4

Traits observed: GL,BWT,200WT,400WT,600WT,SC,Scan(EMA,Rib,Rump,IMF),DOC, Structure(Claw Set x 1, Foot Angle x 1)

Used as a yearling over Commercial Cows in our Spring 2021 joining program. He offers high growth with good calving ease. Strong genetic merit for fertility & structural traits with good IMF.



Scrotal Circumference: 43cm
Sperm Motility: 75.0%
Sperm Morphology: 84.0%

Purchaser..... \$.....

LOT 18 EASTERN PLAINS REWAN R16 SV (AI) APR

BORN: 9/7/2020 **IDENT:** NEPR16 **GENETIC STATUS:** AMFU,CAFU,DDFU,NHFU
EF COMMANDO 1366^{PV} CLUDEN NEWRY EQUATOR F10^{SV}
SIRE: BALDRIDGE 38 SPECIAL^{PV} USA18229487 **DAM:** EASTERN PLAINS L53# NEPL53
BALDRIDGE ISABEL Y69[#] EASTERN PLAINS E83[#]

Mid June 2022 Angus Australia Trans-Tasman Angus Cattle Evaluation (TACE)

TACE	CALVING EASE				GROWTH & MATERNAL				FERTILITY			CARCASE						STRUCTURE			
	CED	CEM	GL	BW	200	400	600	MCW	Milk	Scrot	DC	CWT	EMA	RIB	RUMP	RBY%	IMF%	NFI-F	DOC	ANG	CLAW
EBV	5.6	5.7	-6.6	2.9	49	89	113	86	19	2.4	-5.6	63	4.9	0.7	0.2	-0.2	2	0.51	1	0.7	0.58
ACC	58%	46%	85%	75%	71%	71%	74%	68%	60%	73%	39%	61%	61%	62%	62%	58%	58%	47%	58%	67%	66%

SELECTION INDEX VALUES				BEEFCLASS STRUCTURAL ASSESSMENT SCORES								
Ang Breed	Domestic	Hvy Grain	Hvy Grass	F Claw Set	R Claw Set	F Ang	R Ang	R Leg Side	R Leg Hind	Mus Sc	Temp	Sheath
\$213	\$178	\$275	\$196	6	6	5	6	5	5	C+	1	4

Traits observed: GL,BWT,200WT,400WT,600WT,SC,Scan(EMA,Rib,Rump,IMF),DOC, Structure(Claw Set x 1, Foot Angle x 1)

A bull offering low birthweight, good calving ease genetics with outstanding genetic merit for structural traits. Strong in both Days to Calving & Scrotal Size fertility traits.



Scrotal Circumference: 44cm
Sperm Motility: 74.0%
Sperm Morphology: 76.0%

Purchaser..... \$.....



Eastern Plains Angus 2022 Sale Bulls

LOT 19 EASTERN PLAINS RAVENSWOOD R38^{SV} (AI) HBR

BORN: 19/7/2020 **IDENT:** NEPR38 **GENETIC STATUS:** AMFU,CAFU,DDFU,NHFU
 G A R SURE FIRE^{SV} ARDROSSAN EQUATOR D19^{SV}
SIRE: G A R BONFIRE^{PV} USA18789776 **DAM:** EASTERN PLAINS BERTHA J142[#] NEPJ142
 CHAIR ROCK PROPHET 3054[#] EASTERN PLAINS BERTHA Y121^{SV}

Mid June 2022 Angus Australia Trans-Tasman Angus Cattle Evaluation (TACE)

TACE	CALVING EASE				GROWTH & MATERNAL					FERTILITY		CARCASE						STRUCTURE			
	CED	CEM	GL	BW	200	400	600	MCW	Milk	Scrot	DC	CWT	EMA	RIB	RUMP	RBV%	IMF%	NFI-F	DOC	ANG	CLAW
EBV	-6	-5.5	0.2	8.1	71	118	154	149	14	2.9	-4.4	89	6.1	-3.9	-5.1	2.8	1.9	-0.38	8	1.06	1.14
ACC	55%	46%	85%	75%	69%	70%	73%	68%	60%	71%	41%	61%	60%	62%	62%	59%	58%	49%	49%	61%	61%

SELECTION INDEX VALUES				BEEFCLASS STRUCTURAL ASSESSMENT SCORES									
Ang Breed	Domestic	Hvy Grain	Hvy Grass	F Claw Set	R Claw Set	F Ang	R Ang	R Leg Side	R Leg Hind	Mus Sc	Temp	Sheath	
\$218	\$184	\$292	\$196	6	5	6	6	5	6	C+	2	5	

Traits observed: GL,BWT,200WT,400WT,600WT,SC,Scan(EMA,Rib,Rump,IMF),DOC,
 Structure(Claw Set x 1, Foot Angle x 1)

A bull with very high growth & carcass weight genetics.



Scrotal Circumference: 42.5cm
Sperm Motility: 80.0%
Sperm Morphology: TBA

Purchaser..... \$.....

LOT 20 EASTERN PLAINS REYNELLA R142^{SV} (Natural) APR

BORN: 2/9/2020 **IDENT:** NEPR142 **GENETIC STATUS:** AMFU,CAFU,DDF,NHFU
 LD CAPITALIST 316^{PV} EASTERN PLAINS EQUATOR K63^{SV}
SIRE: EASTERN PLAINS PELTON P54^{SV} NEPP54 **DAM:** EASTERN PLAINS MISS EDA M188[#] NEPM188
 EASTERN PLAINS LACEY M46[#] EASTERN PLAINS MISS EDA J84[#]

Mid June 2022 Angus Australia Trans-Tasman Angus Cattle Evaluation (TACE)

TACE	CALVING EASE				GROWTH & MATERNAL					FERTILITY		CARCASE						STRUCTURE			
	CED	CEM	GL	BW	200	400	600	MCW	Milk	Scrot	DC	CWT	EMA	RIB	RUMP	RBV%	IMF%	NFI-F	DOC	ANG	CLAW
EBV	-3.5	-2.6	-3.8	7.1	57	99	140	126	17	2	-2.4	79	7.7	-0.3	-0.4	0.8	1.8	0.08	-13	0.76	0.84
ACC	49%	42%	59%	71%	65%	66%	70%	64%	53%	68%	37%	56%	54%	56%	57%	52%	49%	41%	47%	61%	60%

SELECTION INDEX VALUES				BEEFCLASS STRUCTURAL ASSESSMENT SCORES									
Ang Breed	Domestic	Hvy Grain	Hvy Grass	F Claw Set	R Claw Set	F Ang	R Ang	R Leg Side	R Leg Hind	Mus Sc	Temp	Sheath	
\$181	\$138	\$238	\$164	6	6	5	6	5	5	C+	2	3	

Traits observed: BWT,200WT,400WT,600WT,SC,Scan(EMA,Rib,Rump,IMF),DOC,
 Structure(Claw Set x 1, Foot Angle x 1)

A high growth bull along with good carcass & structural traits.



Scrotal Circumference: 41cm
Sperm Motility: 87.0%
Sperm Morphology: 67.5%

Purchaser..... \$.....

LOT 21 EASTERN PLAINS ROBIN R138^{SV} (Natural) HBR

BORN: 2/9/2020 **IDENT:** NEPR138 **GENETIC STATUS:** AMFU,CAFU,DDFU,NHFU
 EASTERN PLAINS MANGROVE M51^{SV} EASTERN PLAINS LIQUOR L23^{SV}
SIRE: EASTERN PLAINS PITNACREE P110^{SV} NEPP110 **DAM:** EASTERN PLAINS BERTHA N205[#] NEPN205
 EASTERN PLAINS BERTHA J55[#] EASTERN PLAINS BERTHA K159[#]

Mid June 2022 Angus Australia Trans-Tasman Angus Cattle Evaluation (TACE)

TACE	CALVING EASE				GROWTH & MATERNAL					FERTILITY		CARCASE						STRUCTURE			
	CED	CEM	GL	BW	200	400	600	MCW	Milk	Scrot	DC	CWT	EMA	RIB	RUMP	RBV%	IMF%	NFI-F	DOC	ANG	CLAW
EBV	3.1	0.9	-5	4	53	95	124	93	22	1.2	-8.3	75	5.9	1.7	2.7	-1.2	2.1	0.23	2	1.04	0.94
ACC	48%	40%	54%	71%	65%	66%	71%	64%	52%	68%	36%	56%	55%	57%	58%	53%	51%	42%	47%	61%	61%

SELECTION INDEX VALUES				BEEFCLASS STRUCTURAL ASSESSMENT SCORES									
Ang Breed	Domestic	Hvy Grain	Hvy Grass	F Claw Set	R Claw Set	F Ang	R Ang	R Leg Side	R Leg Hind	Mus Sc	Temp	Sheath	
\$235	\$192	\$303	\$219	7	6	6	6	5	5	B-	2	4	

Traits observed: BWT,200WT,400WT,600WT,SC,Scan(EMA,Rib,Rump,IMF),DOC,
 Structure(Claw Set x 1, Foot Angle x 1)

A strong indexing bull with good carcass & fertility genetics. He offers high growth but with moderate birthweight & mature cow weight.



Scrotal Circumference: 39.5cm
Sperm Motility: 89.0%
Sperm Morphology: 74.0%

Purchaser..... \$.....



LOT 22 EASTERN PLAINS RAYMONT R84^{SV} (AI) HBR

BORN: 6/8/2020 **IDENT:** NEPR84 **GENETIC STATUS:** AMFU,CAFU,DDFU,NHFU
BASIN FRANCHISE P142# ARDROSSAN HONOUR H255^{PV}
SIRE: EF COMPLEMENT 8088^{PV} USA16198796 **DAM:** EASTERN PLAINS BERTHA P172# NEPP172
EF EVERELDA ENTENSE 6117# EASTERN PLAINS BERTHA J142#

Mid June 2022 Angus Australia Trans-Tasman Angus Cattle Evaluation (TACE)

TACE	CALVING EASE				GROWTH & MATERNAL				FERTILITY			CARCASS						STRUCTURE			
	CED	CEM	GL	BW	200	400	600	MCW	Milk	Scrot	DC	CWT	EMA	RIB	RUMP	RBY%	IMF%	NFI-F	DOC	ANG	CLAW
EBV	-0.3	3.1	-1	5.7	56	97	134	112	17	1.8	-4.2	75	7.8	-0.2	-0.7	1.1	1.6	0.51	-8	1.3	0.82
ACC	64%	58%	84%	74%	70%	71%	74%	70%	64%	73%	53%	64%	64%	64%	65%	63%	62%	58%	59%	67%	66%

SELECTION INDEX VALUES				BEEFCLASS STRUCTURAL ASSESSMENT SCORES								
Ang Breed	Domestic	Hvy Grain	Hvy Grass	F Claw Set	R Claw Set	F Ang	R Ang	R Leg Side	R Leg Hind	Mus Sc	Temp	Sheath
\$208	\$167	\$266	\$191	7	6	6	6	5	6	C+	1	5

Traits observed: GL,CE,BWT,200WT,400WT,600WT,SC,Scan(EMA,Rib,Rump,IMF),DOC,
Structure(Claw Set x 1, Foot Angle x 1)

Dam is a first calf heifer.



Scrotal Circumference: 40cm
Sperm Motility: 69.0%
Sperm Morphology: 81.0%

Purchaser..... \$.....

LOT 23 EASTERN PLAINS RIO GRANDE R46^{SV} (AI) HBR

BORN: 28/7/2020 **IDENT:** NEPR46 **GENETIC STATUS:** AMFU,CAFU,DDF,NHFU
RENNYLEA EDMUND E11^{PV} TE MANIA EMPEROR E343^{PV}
SIRE: LANDFALL KEYSTONE K132^{PV} TFAK132 **DAM:** EASTERN PLAINS EDA P10# NEPP10
LANDFALL ARCHER H807^{SV} EASTERN PLAINS EDA L46#

Mid June 2022 Angus Australia Trans-Tasman Angus Cattle Evaluation (TACE)

TACE	CALVING EASE				GROWTH & MATERNAL				FERTILITY			CARCASS						STRUCTURE			
	CED	CEM	GL	BW	200	400	600	MCW	Milk	Scrot	DC	CWT	EMA	RIB	RUMP	RBY%	IMF%	NFI-F	DOC	ANG	CLAW
EBV	5.6	7.3	-8.8	2.9	54	102	135	104	18	0.6	-7.4	83	6.4	3.4	1.7	-1.1	2	0.45	-6	1.06	0.84
ACC	62%	55%	83%	74%	69%	70%	73%	68%	61%	73%	45%	62%	62%	62%	63%	60%	59%	52%	58%	66%	66%

SELECTION INDEX VALUES				BEEFCLASS STRUCTURAL ASSESSMENT SCORES								
Ang Breed	Domestic	Hvy Grain	Hvy Grass	F Claw Set	R Claw Set	F Ang	R Ang	R Leg Side	R Leg Hind	Mus Sc	Temp	Sheath
\$241	\$199	\$307	\$226	6	6	6	6	5	6	C+	1	5

Traits observed: GL,CE,BWT,200WT,400WT,600WT,SC,Scan(EMA,Rib,Rump,IMF),DOC,
Structure(Claw Set x 1, Foot Angle x 1)

A high indexing bull who offers high growth genetics but with good calving ease & low birthweight. Ranks in the top 10% of the breed for the important fertility trait Days to Calving.



Scrotal Circumference: 38cm
Sperm Motility: 83.0%
Sperm Morphology: 74.0%

Purchaser..... \$.....

LOT 24 EASTERN PLAINS REDAN R113^{SV} (Natural) APR

BORN: 20/8/2020 **IDENT:** NEPR113 **GENETIC STATUS:** AMFU,CAFU,DDFU,NHFU
BOOROOMOOKA BARTEL K274^{SV} CLUNIE RANGE LEGEND L348^{PV}
SIRE: EASTERN PLAINS PARADISE P28^{SV} NEPP28 **DAM:** EASTERN PLAINS P21# NEPP21
EASTERN PLAINS ABBA D132# EASTERN PLAINS L53#

Mid June 2022 Angus Australia Trans-Tasman Angus Cattle Evaluation (TACE)

TACE	CALVING EASE				GROWTH & MATERNAL				FERTILITY			CARCASS						STRUCTURE			
	CED	CEM	GL	BW	200	400	600	MCW	Milk	Scrot	DC	CWT	EMA	RIB	RUMP	RBY%	IMF%	NFI-F	DOC	ANG	CLAW
EBV	3.4	8.1	-7.3	4.7	55	95	136	133	12	1.2	-4	76	4.7	0.1	-1	-0.1	2	0.03	-16	0.92	0.7
ACC	54%	44%	63%	71%	66%	67%	71%	65%	53%	69%	37%	57%	56%	58%	58%	54%	52%	44%	44%	60%	60%

SELECTION INDEX VALUES				BEEFCLASS STRUCTURAL ASSESSMENT SCORES								
Ang Breed	Domestic	Hvy Grain	Hvy Grass	F Claw Set	R Claw Set	F Ang	R Ang	R Leg Side	R Leg Hind	Mus Sc	Temp	Sheath
\$183	\$141	\$241	\$166	7	6	6	6	6	5	C+	2	4

Traits observed: CE,BWT,200WT,400WT,600WT,SC,Scan(EMA,Rib,Rump,IMF),DOC,
Structure(Claw Set x 1, Foot Angle x 1)

Out of a first calf heifer, he offers good structural traits along with calving ease & strong growth genetics.



Scrotal Circumference: 41.5cm
Sperm Motility: 80.0%
Sperm Morphology: 62.5%

Purchaser..... \$.....



Eastern Plains Angus 2022 Sale Bulls

LOT 25**EASTERN PLAINS ROCKAWAY R91^{SV} (Natural)****APR**

BORN: 9/8/2020 **IDENT:** NEPR91 **GENETIC STATUS:** AMFU,CAFU,DDFU,NHFU
 BOOROOMOOKA BARTEL K274^{SV} TE MANIA EMPEROR E343^{PV}
SIRE: EASTERN PLAINS PEMBROOKE P55^{SV} NEPP55 **DAM:** EASTERN PLAINS MISS EDA N34[#] NEPN34
 EASTERN PLAINS ABBA E116[#] EASTERN PLAINS MISS EDA E16[#]

Mid June 2022 Angus Australia Trans-Tasman Angus Cattle Evaluation (TACE)

TACE	CALVING EASE				GROWTH & MATERNAL					FERTILITY		CARCASE						STRUCTURE			
	CED	CEM	GL	BW	200	400	600	MCW	Milk	Scrot	DC	CWT	EMA	RIB	RUMP	RBV%	IMF%	NFI-F	DOC	ANG	CLAW
EBV	0.7	7.5	-6.2	4.6	53	95	132	126	14	1.4	-5.5	76	6.2	1.3	0.3	-0.1	1.4	0.05	2	0.94	0.9
ACC	52%	45%	64%	72%	66%	67%	71%	65%	55%	69%	41%	58%	57%	58%	59%	55%	53%	46%	50%	63%	63%

SELECTION INDEX VALUES				BEEFCLASS STRUCTURAL ASSESSMENT SCORES									
Ang Breed	Domestic	Hvy Grain	Hvy Grass	F Claw Set	R Claw Set	F Ang	R Ang	R Leg Side	R Leg Hind	Mus Sc	Temp	Sheath	
\$180	\$146	\$227	\$163	7	7	6	7	6	6	C+	2	5	

Traits observed: BWT,200WT,400WT,600WT,SC,Scan(EMA,Rib,Rump,IMF),DOC,
 Structure(Claw Set x 1, Foot Angle x 1)



Scrotal Circumference: 39cm
Sperm Motility: 60.0%
Sperm Morphology: 72.0%

Purchaser..... \$.....

LOT 26**EASTERN PLAINS RAMAH R55^{SV} (AI)****HBR**

BORN: 30/7/2020 **IDENT:** NEPR55 **GENETIC STATUS:** AMFU,CAFU,DDFU,NHFU
 TE MANIA FOE F734^{SV} ARDROSSAN HONOUR H255^{PV}
SIRE: CHILTERN PARK MOE M6^{PV} GTNM6 **DAM:** EASTERN PLAINS ABBA P136[#] NEPP136
 STRATHEWEN TIMEOUT JADE F15^{PV} EASTERN PLAINS ABBA L91[#]

Mid June 2022 Angus Australia Trans-Tasman Angus Cattle Evaluation (TACE)

TACE	CALVING EASE				GROWTH & MATERNAL					FERTILITY		CARCASE						STRUCTURE			
	CED	CEM	GL	BW	200	400	600	MCW	Milk	Scrot	DC	CWT	EMA	RIB	RUMP	RBV%	IMF%	NFI-F	DOC	ANG	CLAW
EBV	6.5	4.8	-4.9	3	51	91	124	88	20	1.3	-7.3	67	6.4	1.5	2	-0.7	2.1	0.59	17	1.22	0.92
ACC	60%	49%	84%	74%	70%	70%	73%	68%	59%	72%	42%	62%	61%	63%	62%	59%	59%	54%	57%	66%	65%

SELECTION INDEX VALUES				BEEFCLASS STRUCTURAL ASSESSMENT SCORES									
Ang Breed	Domestic	Hvy Grain	Hvy Grass	F Claw Set	R Claw Set	F Ang	R Ang	R Leg Side	R Leg Hind	Mus Sc	Temp	Sheath	
\$243	\$194	\$311	\$229	6	6	5	6	5	5	C+	1	5	

Traits observed: GL,CE,BWT,200WT,400WT,600WT,SC,Scan(EMA,Rib,Rump,IMF),DOC,
 Structure(Claw Set x 1, Foot Angle x 1)

Out of a first calf heifer. A high indexing bull with good calving ease & low birthweight.



Scrotal Circumference: 40cm
Sperm Motility: 90.0%
Sperm Morphology: 84.0%

Purchaser..... \$.....

LOT 27**EASTERN PLAINS RIPLEY R83^{SV} (AI)****HBR**

BORN: 6/8/2020 **IDENT:** NEPR83 **GENETIC STATUS:** AMFU,CAFU,DDFU,NHFU
 RENNYLEA EDMUND E11^{PV} EASTERN PLAINS MANGROVE M51^{SV}
SIRE: LANDFALL KEYSTONE K132^{PV} TFAK132 **DAM:** EASTERN PLAINS ABBA P63[#] NEPP63
 LANDFALL ARCHER H807^{SV} EASTERN PLAINS ABBA K41[#]

Mid June 2022 Angus Australia Trans-Tasman Angus Cattle Evaluation (TACE)

TACE	CALVING EASE				GROWTH & MATERNAL					FERTILITY		CARCASE						STRUCTURE			
	CED	CEM	GL	BW	200	400	600	MCW	Milk	Scrot	DC	CWT	EMA	RIB	RUMP	RBV%	IMF%	NFI-F	DOC	ANG	CLAW
EBV	1.4	3.1	-5.4	4.6	55	103	132	114	20	2.1	-5.9	87	7.2	-0.1	-1.9	1.4	1.7	0.25	-4	1.04	0.82
ACC	61%	52%	83%	74%	69%	70%	73%	68%	60%	72%	43%	61%	61%	62%	62%	58%	58%	49%	57%	66%	65%

SELECTION INDEX VALUES				BEEFCLASS STRUCTURAL ASSESSMENT SCORES									
Ang Breed	Domestic	Hvy Grain	Hvy Grass	F Claw Set	R Claw Set	F Ang	R Ang	R Leg Side	R Leg Hind	Mus Sc	Temp	Sheath	
\$213	\$185	\$272	\$195	6	6	5	6	5	5	C	1	5	

Traits observed: GL,CE,BWT,200WT,400WT,600WT,SC,Scan(EMA,Rib,Rump,IMF),DOC,
 Structure(Claw Set x 1, Foot Angle x 1)

Out of a first calf heifer, he offers high growth & strong fertility genetics with good carcass attributes.



Scrotal Circumference: 40cm
Sperm Motility: 79.0%
Sperm Morphology: 69.0%

Purchaser..... \$.....



LOT 28 **EASTERN PLAINS ROYAL R130^{SV} (Natural)** **HBR**

BORN: 29/8/2020 **IDENT:** NEPR130 **GENETIC STATUS:** AMFU,CAFU,DDFU,NHFU
LD CAPITALIST 316^{PV} BOOROOMOOKA BARTEL K274^{SV}
SIRE: EASTERN PLAINS PELTON P54^{SV} NEPP54 **DAM:** EASTERN PLAINS EDA N123[#] NEPN123
EASTERN PLAINS LACEY M46[#] EASTERN PLAINS EDA K99[#]

Mid June 2022 Angus Australia Trans-Tasman Angus Cattle Evaluation (TACE)

TACE	CALVING EASE				GROWTH & MATERNAL				FERTILITY			CARCASE						STRUCTURE			
	CED	CEM	GL	BW	200	400	600	MCW	Milk	Scrot	DC	CWT	EMA	RIB	RUMP	RBY%	IMF%	NFI-F	DOC	ANG	CLAW
EBV	2.1	4.3	-5.2	4.9	54	95	128	113	14	1.6	-4.7	77	9.1	0.9	1.6	0.1	1.7	0.31	-17	1.02	1.06
ACC	50%	43%	63%	71%	65%	66%	70%	64%	53%	68%	37%	56%	55%	56%	57%	52%	50%	42%	49%	61%	61%

SELECTION INDEX VALUES				BEEFCLASS STRUCTURAL ASSESSMENT SCORES								
Ang Breed	Domestic	Hvy Grain	Hvy Grass	F Claw Set	R Claw Set	F Ang	R Ang	R Leg Side	R Leg Hind	Mus Sc	Temp	Sheath
\$207	\$169	\$263	\$191	7	7	7	7	6	5	C	1	4

Traits observed: BWT,200WT,400WT,600WT,SC,Scan(EMA,Rib,Rump,IMF),DOC,
Structure(Claw Set x 1, Foot Angle x 1)

Strong carcass genetics with high growth & good calving ease.



Scrotal Circumference: 40cm
Sperm Motility: 83.0%
Sperm Morphology: 82.0%

Purchaser..... \$.....

LOT 29 **EASTERN PLAINS RALEIGH R14^{SV} (AI)** **HBR**

BORN: 9/7/2020 **IDENT:** NEPR14 **GENETIC STATUS:** AMFU,CAFU,DDFU,NHFU
CONNEALY CAPITALIST 028[#] LAWSONS DINKY-DI Z191^{SV}
SIRE: LD CAPITALIST 316^{PV} USA17666102 **DAM:** EASTERN PLAINS EDA G15[#] NEPG15
LD DIXIE ERICA 2053[#] EASTERN PLAINS EDA C14[#]

Mid June 2022 Angus Australia Trans-Tasman Angus Cattle Evaluation (TACE)

TACE	CALVING EASE				GROWTH & MATERNAL				FERTILITY			CARCASE						STRUCTURE			
	CED	CEM	GL	BW	200	400	600	MCW	Milk	Scrot	DC	CWT	EMA	RIB	RUMP	RBY%	IMF%	NFI-F	DOC	ANG	CLAW
EBV	11	9.8	-6.3	2	49	87	110	93	18	1.6	-3.2	66	6.7	-0.8	-2.4	1.1	2.5	0.13	-15	0.88	0.84
ACC	63%	57%	85%	76%	71%	72%	75%	71%	66%	75%	48%	65%	64%	65%	66%	62%	61%	55%	60%	68%	68%

SELECTION INDEX VALUES				BEEFCLASS STRUCTURAL ASSESSMENT SCORES								
Ang Breed	Domestic	Hvy Grain	Hvy Grass	F Claw Set	R Claw Set	F Ang	R Ang	R Leg Side	R Leg Hind	Mus Sc	Temp	Sheath
\$213	\$177	\$286	\$196	6	5	5	5	4	5	C+	1	5

Traits observed: GL,BWT,200WT,400WT,600WT,SC,Scan(EMA,Rib,Rump,IMF),DOC,
Structure(Claw Set x 1, Foot Angle x 1)

A very low birthweight very good calving bull with good structural genetics & IMF.



Scrotal Circumference: 42cm
Sperm Motility: 88.0%
Sperm Morphology: 85.0%

Purchaser..... \$.....

LOT 30 **EASTERN PLAINS RANGERS VALLEY R139^{SV} (Natural)** **HBR**

BORN: 2/9/2020 **IDENT:** NEPR139 **GENETIC STATUS:** AMFU,CAFU,DDFU,NHFU
EASTERN PLAINS MANGROVE M51^{SV} ARDROSSAN EQUATOR D19^{SV}
SIRE: EASTERN PLAINS PITNACREE P110^{SV} NEPP110 **DAM:** EASTERN PLAINS ABBA H37[#] NEPH37
EASTERN PLAINS BERTHA J55[#] EASTERN PLAINS ABBA D66[#]

Mid June 2022 Angus Australia Trans-Tasman Angus Cattle Evaluation (TACE)

TACE	CALVING EASE				GROWTH & MATERNAL				FERTILITY			CARCASE						STRUCTURE			
	CED	CEM	GL	BW	200	400	600	MCW	Milk	Scrot	DC	CWT	EMA	RIB	RUMP	RBY%	IMF%	NFI-F	DOC	ANG	CLAW
EBV	3.3	0	-4.6	3.8	48	83	108	85	20	2	-7.6	67	5.1	0.4	0.8	-0.4	2	0.23	7	1.04	0.78
ACC	51%	43%	62%	72%	67%	68%	72%	66%	56%	70%	37%	58%	57%	59%	59%	55%	53%	45%	48%	63%	61%

SELECTION INDEX VALUES				BEEFCLASS STRUCTURAL ASSESSMENT SCORES								
Ang Breed	Domestic	Hvy Grain	Hvy Grass	F Claw Set	R Claw Set	F Ang	R Ang	R Leg Side	R Leg Hind	Mus Sc	Temp	Sheath
\$206	\$168	\$265	\$188	6	6	5	6	5	5	C+	1	5

Traits observed: BWT,200WT,400WT,600WT,SC,Scan(EMA,Rib,Rump,IMF),DOC,
Structure(Claw Set x 1, Foot Angle x 1)

Strong genetic merit for fertility.



Scrotal Circumference: 40cm
Sperm Motility: 64.0%
Sperm Morphology: 90.0%

Purchaser..... \$.....



Eastern Plains Angus 2022 Sale Bulls

LOT 31 EASTERN PLAINS RADIUM R110^{SV} (Natural) APR

BORN: 18/8/2020 **IDENT:** NEPR110 **GENETIC STATUS:** AMFU,CAFU,DDFU,NHFU
 LD CAPITALIST 316^{PV} CLUNIE RANGE LEGEND L348^{PV}
SIRE: EASTERN PLAINS PARINGI P32^{SV} NEPP32 **DAM:** EASTERN PLAINS DAISEY P18[#] NEPP18
 EASTERN PLAINS EDA M128[#] EASTERN PLAINS DAISEY J49[#]

Mid June 2022 Angus Australia Trans-Tasman Angus Cattle Evaluation (TACE)

TACE	CALVING EASE				GROWTH & MATERNAL					FERTILITY		CARCASE						STRUCTURE			
	CED	CEM	GL	BW	200	400	600	MCW	Milk	Scrot	DC	CWT	EMA	RIB	RUMP	RBV%	IMF%	NFI-F	DOC	ANG	CLAW
EBV	2.2	4.7	-6.9	4.9	65	107	146	143	13	1.1	-3.5	81	5.5	1.8	0.3	-0.5	2	-0.16	-12	0.94	0.78
ACC	55%	45%	63%	70%	65%	66%	70%	63%	52%	69%	36%	56%	56%	57%	58%	53%	52%	44%	46%	61%	61%

SELECTION INDEX VALUES				BEEFCLASS STRUCTURAL ASSESSMENT SCORES									
Ang Breed	Domestic	Hvy Grain	Hvy Grass	F Claw Set	R Claw Set	F Ang	R Ang	R Leg Side	R Leg Hind	Mus Sc	Temp	Sheath	
\$213	\$167	\$288	\$194	6	6	5	6	5	5	C+	2	5	

Traits observed: CE,BWT,200WT,400WT,600WT,SC,Scan(EMA,Rib,Rump,IMF),DOC, Structure(Claw Set x 1, Foot Angle x 1)

Out of a first calf heifer offering high growth genetics with good carcass & structural traits.



Scrotal Circumference: 36cm
Sperm Motility: 81.0%
Sperm Morphology: 56.0%

Purchaser..... \$.....

LOT 32 EASTERN PLAINS RIDGELANDS R129^{SV} (Natural) HBR

BORN: 28/8/2020 **IDENT:** NEPR129 **GENETIC STATUS:** AMFU,CAFU,DDFU,NHFU
 LD CAPITALIST 316^{PV} AYRVALE BARTEL E7^{PV}
SIRE: EASTERN PLAINS PARINGI P32^{SV} NEPP32 **DAM:** EASTERN PLAINS ABBA P27[#] NEPP27
 EASTERN PLAINS EDA M128[#] EASTERN PLAINS ABBA M156[#]

Mid June 2022 Angus Australia Trans-Tasman Angus Cattle Evaluation (TACE)

TACE	CALVING EASE				GROWTH & MATERNAL					FERTILITY		CARCASE						STRUCTURE			
	CED	CEM	GL	BW	200	400	600	MCW	Milk	Scrot	DC	CWT	EMA	RIB	RUMP	RBV%	IMF%	NFI-F	DOC	ANG	CLAW
EBV	9.5	9.1	-6.1	3.2	58	99	129	107	20	2.8	-6.4	82	6.9	1.1	0.7	0.1	2	0.24	-2	1.24	1.12
ACC	51%	45%	63%	60%	63%	65%	69%	62%	51%	69%	39%	56%	56%	57%	58%	53%	52%	45%	45%	61%	61%

SELECTION INDEX VALUES				BEEFCLASS STRUCTURAL ASSESSMENT SCORES									
Ang Breed	Domestic	Hvy Grain	Hvy Grass	F Claw Set	R Claw Set	F Ang	R Ang	R Leg Side	R Leg Hind	Mus Sc	Temp	Sheath	
\$246	\$204	\$319	\$230	6	6	5	5	5	5	C+	2	4	

Traits observed: CE,BWT,200WT,400WT,600WT,SC,Scan(EMA,Rib,Rump,IMF),DOC, Structure(Claw Set x 1, Foot Angle x 1)

A very high indexing bull out of a first calf heifer. He offers good carcass genetics, very good calving ease, low birthweight but with high growth & moderate mature cow weight. Also offers good fertility for both Days to Calving & Scrotal Size traits.



Scrotal Circumference: 43cm
Sperm Motility: 87.0%
Sperm Morphology: 66.5%

Purchaser..... \$.....

LOT 33 EASTERN PLAINS RYAN R127^{SV} (Natural) HBR

BORN: 27/8/2020 **IDENT:** NEPR127 **GENETIC STATUS:** AMFU,CAFU,DDFU,NHFU
 EASTERN PLAINS MANGROVE M51^{SV} SYDGEN BLACK PEARL 2006^{PV}
SIRE: EASTERN PLAINS PITNACREE P110^{SV} NEPP110 **DAM:** EASTERN PLAINS EDA N83[#] NEPN83
 EASTERN PLAINS BERTHA J55[#] EASTERN PLAINS EDA B111^{PV}

Mid June 2022 Angus Australia Trans-Tasman Angus Cattle Evaluation (TACE)

TACE	CALVING EASE				GROWTH & MATERNAL					FERTILITY		CARCASE						STRUCTURE			
	CED	CEM	GL	BW	200	400	600	MCW	Milk	Scrot	DC	CWT	EMA	RIB	RUMP	RBV%	IMF%	NFI-F	DOC	ANG	CLAW
EBV	6.2	2.8	-5.4	2.2	48	85	109	81	22	0.9	-6.4	69	6.3	0.9	0.9	-0.5	2	0.11	-13	1.02	0.88
ACC	50%	44%	55%	71%	65%	67%	70%	65%	54%	69%	39%	58%	57%	58%	59%	55%	53%	45%	51%	63%	63%

SELECTION INDEX VALUES				BEEFCLASS STRUCTURAL ASSESSMENT SCORES									
Ang Breed	Domestic	Hvy Grain	Hvy Grass	F Claw Set	R Claw Set	F Ang	R Ang	R Leg Side	R Leg Hind	Mus Sc	Temp	Sheath	
\$222	\$181	\$290	\$205	6	5	5	6	5	5	C+	1	4	

Traits observed: BWT,200WT,400WT,600WT,SC,Scan(EMA,Rib,Rump,IMF),DOC, Structure(Claw Set x 1, Foot Angle x 1)

A bull offering good calving ease low birthweight genetics.



Scrotal Circumference: 39cm
Sperm Motility: 76.0%
Sperm Morphology: 66.0%

Purchaser..... \$.....



LOT 34 **EASTERN PLAINS RAMBO R146^{SV} (Natural)** **HBR**

BORN: 5/9/2020 **IDENT:** NEPR146 **GENETIC STATUS:** AMFU,CAFU,DDC,NHFU
EASTERN PLAINS MANGROVE M51^{SV} PRIME JUGGERNAUT J15^{SV}
SIRE: EASTERN PLAINS PITNACREE P110^{SV} NEPP110 **DAM:** EASTERN PLAINS ABBA N69# NEPN69
EASTERN PLAINS BERTHA J55# EASTERN PLAINS ABBA F92#

Mid June 2022 Angus Australia Trans-Tasman Angus Cattle Evaluation (TACE)

TACE	CALVING EASE				GROWTH & MATERNAL				FERTILITY			CARCASE						STRUCTURE			
	CED	CEM	GL	BW	200	400	600	MCW	Milk	Scrot	DC	CWT	EMA	RIB	RUMP	RBY%	IMF%	NFI-F	DOC	ANG	CLAW
EBV	-1.5	-4.2	-3.5	5.2	48	83	103	83	19	1	-7.3	64	7.7	0.4	0.5	0.1	2.5	0.11	2	0.92	0.84
ACC	50%	42%	60%	71%	66%	67%	71%	64%	53%	69%	37%	57%	56%	58%	58%	54%	52%	44%	49%	61%	61%

SELECTION INDEX VALUES				BEEFCLASS STRUCTURAL ASSESSMENT SCORES								
Ang Breed	Domestic	Hvy Grain	Hvy Grass	F Claw Set	R Claw Set	F Ang	R Ang	R Leg Side	R Leg Hind	Mus Sc	Temp	Sheath
\$206	\$171	\$272	\$187	6	6	5	6	4	5	C+	2	5

Traits observed: BWT,200WT,400WT,600WT,SC,Scan(EMA,Rib,Rump,IMF),DOC, Structure(Claw Set x 1, Foot Angle x 1)



Scrotal Circumference: 39cm
Sperm Motility: 66.0%
Sperm Morphology: 85.0%

Purchaser..... \$.....

LOT 35 **EASTERN PLAINS RANGARI R68^{SV} (Natural)** **HBR**

BORN: 2/8/2020 **IDENT:** NEPR68 **GENETIC STATUS:** AMFU,CAFU,DDF,NHFU
LD CAPITALIST 316^{PV} ARDROSSAN EQUATOR A241^{PV}
SIRE: EASTERN PLAINS PELTON P54^{SV} NEPP54 **DAM:** EASTERN PLAINS BIRTHA F13# NEPF13
EASTERN PLAINS LACEY M46# EASTERN PLAINS BERTHA Y139#

Mid June 2022 Angus Australia Trans-Tasman Angus Cattle Evaluation (TACE)

TACE	CALVING EASE				GROWTH & MATERNAL				FERTILITY			CARCASE						STRUCTURE			
	CED	CEM	GL	BW	200	400	600	MCW	Milk	Scrot	DC	CWT	EMA	RIB	RUMP	RBY%	IMF%	NFI-F	DOC	ANG	CLAW
EBV	-0.6	-0.5	-4.5	5.7	53	94	123	115	15	2	-2.6	78	7.2	-1.1	-1.1	1.2	1.7	0.13	-15	-	-
ACC	51%	46%	64%	68%	63%	64%	67%	63%	57%	65%	40%	56%	54%	57%	56%	54%	53%	46%	51%	-	-

SELECTION INDEX VALUES				BEEFCLASS STRUCTURAL ASSESSMENT SCORES								
Ang Breed	Domestic	Hvy Grain	Hvy Grass	F Claw Set	R Claw Set	F Ang	R Ang	R Leg Side	R Leg Hind	Mus Sc	Temp	Sheath
\$175	\$146	\$229	\$156	6	6	6	6	4	5	C+	2	5

Traits observed: BWT,200WT,400WT,600WT,SC,Scan(EMA,Rib,Rump,IMF),DOC



Scrotal Circumference: 39.5cm
Sperm Motility: 72.0%
Sperm Morphology: 73.0%

Purchaser..... \$.....

LOT 36 **EASTERN PLAINS RAWSON R126^{SV} (Natural)** **HBR**

BORN: 26/8/2020 **IDENT:** NEPR126 **GENETIC STATUS:** AMFU,CAFU,DDFU,NHFU
EASTERN PLAINS MANGROVE M51^{SV} CARABAR DOCKLANDS D62^{PV}
SIRE: EASTERN PLAINS PITNACREE P110^{SV} NEPP110 **DAM:** EASTERN PLAINS ABBA M6# NEPM6
EASTERN PLAINS BERTHA J55# EASTERN PLAINS ABBA F100#

Mid June 2022 Angus Australia Trans-Tasman Angus Cattle Evaluation (TACE)

TACE	CALVING EASE				GROWTH & MATERNAL				FERTILITY			CARCASE						STRUCTURE			
	CED	CEM	GL	BW	200	400	600	MCW	Milk	Scrot	DC	CWT	EMA	RIB	RUMP	RBY%	IMF%	NFI-F	DOC	ANG	CLAW
EBV	5.8	1.3	-7.1	2.4	43	82	100	72	23	0.9	-12.8	64	4.9	3.1	4.8	-2.4	2.3	0.42	0	1.24	0.92
ACC	50%	44%	60%	71%	66%	67%	71%	65%	54%	69%	40%	57%	56%	58%	59%	54%	52%	45%	50%	63%	63%

SELECTION INDEX VALUES				BEEFCLASS STRUCTURAL ASSESSMENT SCORES								
Ang Breed	Domestic	Hvy Grain	Hvy Grass	F Claw Set	R Claw Set	F Ang	R Ang	R Leg Side	R Leg Hind	Mus Sc	Temp	Sheath
\$233	\$197	\$294	\$217	6	6	6	7	5	6	C+	1	4

Traits observed: BWT,200WT,400WT,600WT,SC,Scan(EMA,Rib,Rump,IMF),DOC, Structure(Claw Set x 1, Foot Angle x 1)

A high indexing bull with low birthweight & good calving ease genetics. He is a trait leader for the important fertility trait Days to Calving to help breed female progeny who will trend to earlier joining in the breeding season.



Scrotal Circumference: 46cm
Sperm Motility: 72.0%
Sperm Morphology: 78.0%

Purchaser..... \$.....



Eastern Plains Angus 2022 Sale Bulls

LOT 37**EASTERN PLAINS RUTHERGLEN R149^{SV} (Natural)****HBR****BORN:** 8/9/2020 **IDENT:** NEPR149 **GENETIC STATUS:** AMFU,CAFU,DDFU,NHFUEASTERN PLAINS MANGROVE M51^{SV}SYDGEN BLACK PEARL 2006^{PV}**SIRE:** EASTERN PLAINS PITNACREE P110^{SV} NEPP110**DAM:** EASTERN PLAINS EDA N92[#] NEPN92EASTERN PLAINS BERTHA J55[#]EASTERN PLAINS EDA B111^{PV}**Mid June 2022 Angus Australia Trans-Tasman Angus Cattle Evaluation (TACE)**

TACE	CALVING EASE				GROWTH & MATERNAL					FERTILITY		CARCASE						STRUCTURE			
	CED	CEM	GL	BW	200	400	600	MCW	Milk	Scrot	DC	CWT	EMA	RIB	RUMP	RBV%	IMF%	NFI-F	DOC	ANG	CLAW
EBV	4.7	1.4	-5	3.3	51	89	118	92	21	1.6	-6.6	74	7.4	1.2	1.1	-0.3	2	0.24	-15	1.12	1.04
ACC	50%	44%	55%	71%	65%	65%	68%	63%	54%	65%	39%	57%	54%	57%	55%	55%	53%	46%	51%	59%	59%

SELECTION INDEX VALUES				BEEFCLASS STRUCTURAL ASSESSMENT SCORES									
Ang Breed	Domestic	Hvy Grain	Hvy Grass	F Claw Set	R Claw Set	F Ang	R Ang	R Leg Side	R Leg Hind	Mus Sc	Temp	Sheath	
\$224	\$181	\$291	\$208	5	5	6	6	5	5	C+	2	5	

Traits observed: BWT,200WT,400WT,600WT,SC,Scan(EMA,Rib,Rump,IMF),DOC,
Structure(Claw Set x 1, Foot Angle x 1)

A good indexing bull who offers moderate birthweight with good fertility & carcass genetics.



Scrotal Circumference: 39.5cm
Sperm Motility: 91.0%
Sperm Morphology: 73.0%

Purchaser..... \$.....

LOT 38**EASTERN PLAINS ROCKWELL R73^{SV} (AI)****APR****BORN:** 3/8/2020 **IDENT:** NEPR73 **GENETIC STATUS:** AMFU,CAFU,DDF,NHFUBASIN FRANCHISE P142[#]EASTERN PLAINS MARAMA M47^{SV}**SIRE:** EF COMPLEMENT 8088^{PV} USA16198796**DAM:** EASTERN PLAINS MISS EDA P101[#] NEPP101EF EVERELDA ENTENSE 6117[#]EASTERN PLAINS MISS EDA K68[#]**Mid June 2022 Angus Australia Trans-Tasman Angus Cattle Evaluation (TACE)**

TACE	CALVING EASE				GROWTH & MATERNAL					FERTILITY		CARCASE						STRUCTURE			
	CED	CEM	GL	BW	200	400	600	MCW	Milk	Scrot	DC	CWT	EMA	RIB	RUMP	RBV%	IMF%	NFI-F	DOC	ANG	CLAW
EBV	3.2	7.2	-3.8	4.4	53	99	132	112	22	1.8	-5.6	80	6.9	0.3	0.7	-0.1	1.9	0.3	9	1.14	0.88
ACC	61%	56%	83%	74%	70%	70%	74%	70%	62%	72%	51%	63%	62%	63%	64%	61%	60%	56%	56%	66%	65%

SELECTION INDEX VALUES				BEEFCLASS STRUCTURAL ASSESSMENT SCORES									
Ang Breed	Domestic	Hvy Grain	Hvy Grass	F Claw Set	R Claw Set	F Ang	R Ang	R Leg Side	R Leg Hind	Mus Sc	Temp	Sheath	
\$212	\$174	\$273	\$196	6	6	5	6	5	5	C+	2	5	

Traits observed: GL,CE,BWT,200WT,400WT,600WT,SC,Scan(EMA,Rib,Rump,IMF),DOC,
Structure(Claw Set x 1, Foot Angle x 1)

A good indexing bull out of a first calf heifer. High growth genetics with good carcass, particularly carcass weight.



Scrotal Circumference: 39cm
Sperm Motility: 74.0%
Sperm Morphology: 78.0%

Purchaser..... \$.....

LOT 39**EASTERN PLAINS RAMSGATE R90^{SV} (AI)****APR****BORN:** 8/8/2020 **IDENT:** NEPR90 **GENETIC STATUS:** AMFU,CAFU,DDFU,NHFUG A R PROPHET^{SV}ARDROSSAN EQUATOR A241^{PV}**SIRE:** BALDRIDGE BEAST MODE B074^{PV} USA17960722**DAM:** EASTERN PLAINS DAISEY G37[#] NEPG37BALDRIDGE ISABEL Y69[#]EASTERN PLAINS DAISEY W44[#]**Mid June 2022 Angus Australia Trans-Tasman Angus Cattle Evaluation (TACE)**

TACE	CALVING EASE				GROWTH & MATERNAL					FERTILITY		CARCASE						STRUCTURE			
	CED	CEM	GL	BW	200	400	600	MCW	Milk	Scrot	DC	CWT	EMA	RIB	RUMP	RBV%	IMF%	NFI-F	DOC	ANG	CLAW
EBV	2.9	5	-3.5	3.4	58	99	121	104	15	3.7	-8.4	73	5.5	-0.4	-0.7	1	1.9	0.28	12	0.78	0.64
ACC	62%	54%	85%	75%	71%	72%	74%	70%	65%	74%	45%	64%	63%	63%	64%	60%	60%	52%	58%	67%	67%

SELECTION INDEX VALUES				BEEFCLASS STRUCTURAL ASSESSMENT SCORES									
Ang Breed	Domestic	Hvy Grain	Hvy Grass	F Claw Set	R Claw Set	F Ang	R Ang	R Leg Side	R Leg Hind	Mus Sc	Temp	Sheath	
\$247	\$216	\$317	\$230	7	6	6	6	5	5	C	2	4	

Traits observed: GL,BWT,200WT,400WT,600WT,SC,Scan(EMA,Rib,Rump,IMF),DOC,
Structure(Claw Set x 1, Foot Angle x 1)

A very high indexing bull with tremendous genetic merit for fertility & structural traits. He also offers high growth but moderate birthweight & good calving ease genetics.



Scrotal Circumference: 43cm
Sperm Motility: TBA
Sperm Morphology: TBA

Purchaser..... \$.....



LOT 40 EASTERN PLAINS RALMARDEL R13^{SV} (AI) HBR

BORN: 9/7/2020 **IDENT:** NEPR13 **GENETIC STATUS:** AMFU,CAFU,DDF,NHFU
RENNYLEA EDMUND E11^{PV} EF COMPLEMENT 8088^{PV}
SIRE: LANDFALL KEYSTONE K132^{PV} TFAK132 **DAM:** EASTERN PLAINS ABBA P123# NEPP123
LANDFALL ARCHER H807^{SV} EASTERN PLAINS ABBA G114[#]

Mid June 2022 Angus Australia Trans-Tasman Angus Cattle Evaluation (TACE)

TACE	CALVING EASE				GROWTH & MATERNAL				FERTILITY			CARCASE						STRUCTURE			
	CED	CEM	GL	BW	200	400	600	MCW	Milk	Scrot	DC	CWT	EMA	RIB	RUMP	RBY%	IMF%	NFI-F	DOC	ANG	CLAW
EBV	6.6	9	-7.3	1.6	50	96	124	100	22	1	-5.4	76	4	2	0.5	-0.3	2.1	0.39	15	1.1	0.7
ACC	61%	54%	68%	74%	70%	71%	74%	68%	62%	73%	44%	62%	62%	62%	63%	60%	59%	52%	57%	66%	66%

SELECTION INDEX VALUES				BEEFCLASS STRUCTURAL ASSESSMENT SCORES								
Ang Breed	Domestic	Hvy Grain	Hvy Grass	F Claw Set	R Claw Set	F Ang	R Ang	R Leg Side	R Leg Hind	Mus Sc	Temp	Sheath
\$223	\$185	\$290	\$206	7	7	6	6	5	5	C+	2	4

Traits observed: CE,BWT,200WT,400WT,600WT,SC,Scan(EMA,Rib,Rump,IMF),DOC, Structure(Claw Set x 1, Foot Angle x 1)

A high indexing bull out of a first calf heifer. Very low birthweight, very good calving ease genetics combined with good growth but moderate mature cow weight.



Scrotal Circumference: 39cm
Sperm Motility: 87.0%
Sperm Morphology: 78.0%

Purchaser..... \$.....

LOT 41 EASTERN PLAINS RIVERVIEW R96^{SV} (Natural) HBR

BORN: 12/8/2020 **IDENT:** NEPR96 **GENETIC STATUS:** AMFU,CAFU,DDFU,NHFU
BOOROOMOOKA BARTEL K274^{SV} CONNEALY REVENUE 7392[#]
SIRE: EASTERN PLAINS PEMBROOKE P55^{SV} NEPP55 **DAM:** EASTERN PLAINS EDA M161# NEPM161
EASTERN PLAINS ABBA E116[#] EASTERN PLAINS EDA H96[#]

Mid June 2022 Angus Australia Trans-Tasman Angus Cattle Evaluation (TACE)

TACE	CALVING EASE				GROWTH & MATERNAL				FERTILITY			CARCASE						STRUCTURE			
	CED	CEM	GL	BW	200	400	600	MCW	Milk	Scrot	DC	CWT	EMA	RIB	RUMP	RBY%	IMF%	NFI-F	DOC	ANG	CLAW
EBV	2.1	9.5	-3.2	2.4	46	86	111	97	20	1.8	-5.4	72	5.9	-0.2	-0.7	0.7	1.1	-0.1	9	0.96	0.88
ACC	51%	44%	64%	72%	67%	68%	71%	66%	55%	69%	39%	58%	57%	58%	59%	55%	53%	45%	48%	63%	61%

SELECTION INDEX VALUES				BEEFCLASS STRUCTURAL ASSESSMENT SCORES								
Ang Breed	Domestic	Hvy Grain	Hvy Grass	F Claw Set	R Claw Set	F Ang	R Ang	R Leg Side	R Leg Hind	Mus Sc	Temp	Sheath
\$183	\$157	\$231	\$166	5	6	5	6	5	5	C+	1	4

Traits observed: BWT,200WT,400WT,600WT,SC,Scan(EMA,Rib,Rump,IMF),DOC, Structure(Claw Set x 1, Foot Angle x 1)



Scrotal Circumference: 39cm
Sperm Motility: 90.0%
Sperm Morphology: 78.0%

Purchaser..... \$.....

LOT 42 EASTERN PLAINS RIVERLEA R86^{SV} (AI) HBR

BORN: 7/8/2020 **IDENT:** NEPR86 **GENETIC STATUS:** AMFU,CAFU,DDFU,NHFU
BASIN FRANCHISE P142[#] CLUNIE RANGE LEGEND L348^{PV}
SIRE: EF COMPLEMENT 8088^{PV} USA16198796 **DAM:** EASTERN PLAINS BERTHA P31# NEPP31
EF EVERELDA ENTENSE 6117[#] EASTERN PLAINS BERTHA G34[#]

Mid June 2022 Angus Australia Trans-Tasman Angus Cattle Evaluation (TACE)

TACE	CALVING EASE				GROWTH & MATERNAL				FERTILITY			CARCASE						STRUCTURE			
	CED	CEM	GL	BW	200	400	600	MCW	Milk	Scrot	DC	CWT	EMA	RIB	RUMP	RBY%	IMF%	NFI-F	DOC	ANG	CLAW
EBV	-0.3	5.8	-3.3	5.7	59	104	137	119	15	2.6	-5.8	77	5.6	1.4	0.8	-0.2	2.2	0.41	10	1.12	0.82
ACC	63%	58%	84%	74%	70%	71%	74%	69%	63%	73%	52%	64%	63%	64%	65%	62%	61%	57%	58%	67%	67%

SELECTION INDEX VALUES				BEEFCLASS STRUCTURAL ASSESSMENT SCORES								
Ang Breed	Domestic	Hvy Grain	Hvy Grass	F Claw Set	R Claw Set	F Ang	R Ang	R Leg Side	R Leg Hind	Mus Sc	Temp	Sheath
\$218	\$181	\$284	\$202	6	6	6	6	5	6	C+	2	4

Traits observed: GL,CE,BWT,200WT,400WT,600WT,SC,Scan(EMA,Rib,Rump,IMF),DOC, Structure(Claw Set x 1, Foot Angle x 1)

A good indexing bull out of a first calf heifer who offers very good fertility genetics & high growth.



Scrotal Circumference: 42.5cm
Sperm Motility: 67.0%
Sperm Morphology: 61.0%

Purchaser..... \$.....



Eastern Plains Angus 2022 Sale Bulls

LOT 43

EASTERN PLAINS RIBBENBAH R140^{SV} (Natural)

HBR

BORN: 2/9/2020

IDENT: NEPR140

GENETIC STATUS: AMFU,CAFU,DDFU,NHFU

LD CAPITALIST 316^{PV}

EASTERN PLAINS EQUATOR K63^{SV}

SIRE: EASTERN PLAINS PELTON P54^{SV} NEPP54

DAM: EASTERN PLAINS GAY M168[#] NEPM168

EASTERN PLAINS LACEY M46[#]

EASTERN PLAINS GAY K125[#]

Mid June 2022 Angus Australia Trans-Tasman Angus Cattle Evaluation (TACE)

TACE	CALVING EASE				GROWTH & MATERNAL					FERTILITY		CARCASE						STRUCTURE			
	CED	CEM	GL	BW	200	400	600	MCW	Milk	Scrot	DC	CWT	EMA	RIB	RUMP	RBV%	IMF%	NFI-F	DOC	ANG	CLAW
EBV	5.2	4.6	-5.1	2.8	45	85	107	82	19	1.7	-5.3	69	8.5	1	1.6	0	1.8	0.35	-7	0.96	0.94
ACC	49%	41%	58%	71%	65%	66%	70%	64%	53%	68%	37%	56%	54%	56%	57%	51%	49%	40%	47%	60%	60%

SELECTION INDEX VALUES				BEEFCLASS STRUCTURAL ASSESSMENT SCORES									
Ang Breed	Domestic	Hvy Grain	Hvy Grass	F Claw Set	R Claw Set	F Ang	R Ang	R Leg Side	R Leg Hind	Mus Sc	Temp	Sheath	
\$205	\$174	\$260	\$190	7	6	6	6	5	5	B-	2	4	

Traits observed: BWT,200WT,400WT,600WT,SC,Scan(EMA,Rib,Rump,IMF),DOC, Structure(Claw Set x 1, Foot Angle x 1)

A low birthweight good calving ease bull.



Scrotal Circumference: 43cm
Sperm Motility: 69.0%
Sperm Morphology: 82.0%

Purchaser..... \$.....

LOT 44

EASTERN PLAINS REX R128^{SV} (Natural)

HBR

BORN: 27/8/2020

IDENT: NEPR128

GENETIC STATUS: AMFU,CAFU,DDFU,NHFU

LD CAPITALIST 316^{PV}

EASTERN PLAINS JACKES J51^{SV}

SIRE: EASTERN PLAINS PELTON P54^{SV} NEPP54

DAM: EASTERN PLAINS IDA L137[#] NEPL137

EASTERN PLAINS LACEY M46[#]

EASTERN PLAINS IDA H146[#]

Mid June 2022 Angus Australia Trans-Tasman Angus Cattle Evaluation (TACE)

TACE	CALVING EASE				GROWTH & MATERNAL					FERTILITY		CARCASE						STRUCTURE			
	CED	CEM	GL	BW	200	400	600	MCW	Milk	Scrot	DC	CWT	EMA	RIB	RUMP	RBV%	IMF%	NFI-F	DOC	ANG	CLAW
EBV	-1.9	0.3	-3.3	5.9	47	84	109	105	17	1.8	-2.7	69	8	-1.1	-0.9	1	1.9	0.11	-20	0.92	0.84
ACC	50%	42%	60%	71%	65%	66%	70%	64%	53%	68%	34%	56%	53%	54%	56%	50%	48%	41%	47%	61%	60%

SELECTION INDEX VALUES				BEEFCLASS STRUCTURAL ASSESSMENT SCORES									
Ang Breed	Domestic	Hvy Grain	Hvy Grass	F Claw Set	R Claw Set	F Ang	R Ang	R Leg Side	R Leg Hind	Mus Sc	Temp	Sheath	
\$152	\$126	\$202	\$133	6	6	6	6	5	5	C+	1	5	

Traits observed: BWT,200WT,400WT,600WT,SC,Scan(EMA,Rib,Rump,IMF),DOC, Structure(Claw Set x 1, Foot Angle x 1)



Scrotal Circumference: 38cm
Sperm Motility: 88.0%
Sperm Morphology: 70.0%

Purchaser..... \$.....

LOT 45

EASTERN PLAINS BERTHA R12^{SV} (AI)

HBR

BORN: 8/7/2020

IDENT: NEPR12

GENETIC STATUS: AMFU,CAFU,DDFU,NHFU

CONNEALY CAPITALIST 028[#]

NICHOLS EXTRA K205[#]

SIRE: LD CAPITALIST 316^{PV} USA17666102

DAM: EASTERN PLAINS BERTHA G34[#] NEPG34

LD DIXIE ERICA 2053[#]

EASTERN PLAINS BERTHA E44[#]

Mid June 2022 Angus Australia Trans-Tasman Angus Cattle Evaluation (TACE)

TACE	CALVING EASE				GROWTH & MATERNAL					FERTILITY		CARCASE						STRUCTURE			
	CED	CEM	GL	BW	200	400	600	MCW	Milk	Scrot	DC	CWT	EMA	RIB	RUMP	RBV%	IMF%	NFI-F	DOC	ANG	CLAW
EBV	9.8	9	-6.7	2.6	46	83	104	77	17	2.2	-5.2	61	5.9	1.3	1	0.3	2.2	0.46	3	1.04	1.04
ACC	63%	56%	85%	75%	71%	72%	75%	71%	66%	74%	48%	65%	64%	65%	65%	62%	61%	54%	59%	68%	68%

SELECTION INDEX VALUES				BEEFCLASS STRUCTURAL ASSESSMENT SCORES									
Ang Breed	Domestic	Hvy Grain	Hvy Grass	F Claw Set	R Claw Set	F Ang	R Ang	R Leg Side	R Leg Hind	Mus Sc	Temp	Sheath	
\$220	\$186	\$282	\$204	6	6	5	5	5	5	C+	2	5	

Traits observed: GL,BWT,200WT,400WT,600WT,SC,Scan(EMA,Rib,Rump,IMF),DOC, Structure(Claw Set x 1, Foot Angle x 1)

A good all-round indexing bull with low birthweight & good calving ease genetics. Positive for fat with good fertility.



Scrotal Circumference: 42cm
Sperm Motility: 90.0%
Sperm Morphology: 70.5%

Purchaser..... \$.....



LOT 46 EASTERN PLAINS RIMROCK R143^{SV} (Natural) HBR

BORN: 2/9/2020 **IDENT:** NEPR143 **GENETIC STATUS:** AMFU,CAFU,DDFU,NHFU
EASTERN PLAINS MANGROVE M51^{SV} MUSGRAVE BIG SKY^{PV}
SIRE: EASTERN PLAINS PITNACREE P110^{SV} NEPP110 **DAM:** EASTERN PLAINS IDA M101[#] NEPM101
EASTERN PLAINS BERTHA J55[#] EASTERN PLAINS IDA K4[#]

Mid June 2022 Angus Australia Trans-Tasman Angus Cattle Evaluation (TACE)

TACE	CALVING EASE				GROWTH & MATERNAL				FERTILITY			CARCASE						STRUCTURE			
	CED	CEM	GL	BW	200	400	600	MCW	Milk	Scrot	DC	CWT	EMA	RIB	RUMP	RBY%	IMF%	NFI-F	DOC	ANG	CLAW
EBV	0.7	-0.5	-6.8	4.6	56	95	123	99	21	0.4	-8.3	73	6	1.4	2.9	-1.3	1.9	0.19	-1	0.96	0.84
ACC	50%	42%	60%	71%	66%	67%	71%	65%	53%	69%	38%	57%	56%	58%	58%	54%	52%	44%	48%	63%	63%

SELECTION INDEX VALUES				BEEFCLASS STRUCTURAL ASSESSMENT SCORES								
Ang Breed	Domestic	Hvy Grain	Hvy Grass	F Claw Set	R Claw Set	F Ang	R Ang	R Leg Side	R Leg Hind	Mus Sc	Temp	Sheath
\$229	\$187	\$298	\$210	5	6	6	6	5	6	C+	1	4

Traits observed: BWT,200WT,400WT,600WT,SC,Scan(EMA,Rib,Rump,IMF),DOC, Structure(Claw Set x 1, Foot Angle x 1)

A high indexing bull with very good growth but moderate mature cow weight. Ranks in top 5% of the breed for the important fertility trait Days to Calving.



Scrotal Circumference: 39cm
Sperm Motility: 80.0%
Sperm Morphology: 65.0%

Purchaser..... \$.....

LOT 47 EASTERN PLAINS RUSSELL R100^{SV} (Natural) HBR

BORN: 14/8/2020 **IDENT:** NEPR100 **GENETIC STATUS:** AMFU,CAFU,DDF,NHFU
LD CAPITALIST 316^{PV} TE MANIA EMPEROR E343^{PV}
SIRE: EASTERN PLAINS PELTON P54^{SV} NEPP54 **DAM:** EASTERN PLAINS EDA N102[#] NEPN102
EASTERN PLAINS LACEY M46[#] EASTERN PLAINS EDA H101[#]

Mid June 2022 Angus Australia Trans-Tasman Angus Cattle Evaluation (TACE)

TACE	CALVING EASE				GROWTH & MATERNAL				FERTILITY			CARCASE						STRUCTURE			
	CED	CEM	GL	BW	200	400	600	MCW	Milk	Scrot	DC	CWT	EMA	RIB	RUMP	RBY%	IMF%	NFI-F	DOC	ANG	CLAW
EBV	3.9	4.2	-7.1	4.2	49	88	112	97	16	2.3	-5.8	65	5.1	2.4	2.5	-0.8	2	0.23	-7	0.94	0.84
ACC	52%	46%	63%	72%	66%	67%	71%	65%	53%	68%	39%	57%	56%	57%	58%	54%	52%	45%	50%	63%	61%

SELECTION INDEX VALUES				BEEFCLASS STRUCTURAL ASSESSMENT SCORES								
Ang Breed	Domestic	Hvy Grain	Hvy Grass	F Claw Set	R Claw Set	F Ang	R Ang	R Leg Side	R Leg Hind	Mus Sc	Temp	Sheath
\$198	\$166	\$255	\$181	6	6	6	6	6	6	C+	2	5

Traits observed: BWT,200WT,400WT,600WT,SC,Scan(EMA,Rib,Rump,IMF),DOC, Structure(Claw Set x 1, Foot Angle x 1)

A good calving ease bull with good genetic merit for structure & fertility traits.



Scrotal Circumference: 41.5cm
Sperm Motility: 75.0%
Sperm Morphology: 83.0%

Purchaser..... \$.....

LOT 48 EASTERN PLAINS RAMORNIE R89^{SV} (AI) APR

BORN: 8/8/2020 **IDENT:** NEPR89 **GENETIC STATUS:** AMFU,CAFU,DDC,NHFU
CONNEALY CAPITALIST 028[#] NICHOLS EXTRA K205[#]
SIRE: LD CAPITALIST 316^{PV} USA17666102 **DAM:** EASTERN PLAINS MISS EDA F56[#] NEPF56
LD DIXIE ERICA 2053[#] EASTERN PLAINS MISSEDA Z63[#]

Mid June 2022 Angus Australia Trans-Tasman Angus Cattle Evaluation (TACE)

TACE	CALVING EASE				GROWTH & MATERNAL				FERTILITY			CARCASE						STRUCTURE			
	CED	CEM	GL	BW	200	400	600	MCW	Milk	Scrot	DC	CWT	EMA	RIB	RUMP	RBY%	IMF%	NFI-F	DOC	ANG	CLAW
EBV	6.2	6.9	-2.5	3.8	48	87	109	96	17	0.9	-3.5	68	6.5	-0.1	-0.9	0.6	1.6	0.16	-3	1.02	0.96
ACC	62%	55%	85%	75%	71%	72%	75%	70%	66%	74%	48%	65%	63%	64%	65%	61%	61%	53%	58%	67%	66%

SELECTION INDEX VALUES				BEEFCLASS STRUCTURAL ASSESSMENT SCORES								
Ang Breed	Domestic	Hvy Grain	Hvy Grass	F Claw Set	R Claw Set	F Ang	R Ang	R Leg Side	R Leg Hind	Mus Sc	Temp	Sheath
\$186	\$160	\$240	\$166	6	5	6	6	5	5	C+	2	5

Traits observed: GL,BWT,200WT,400WT,600WT,SC,Scan(EMA,Rib,Rump,IMF),DOC, Structure(Claw Set x 1, Foot Angle x 1)

A moderate birthweight good calving ease bull.



Scrotal Circumference: 42cm
Sperm Motility: 83.0%
Sperm Morphology: 69.0%

Purchaser..... \$.....



Eastern Plains Angus 2022 Sale Bulls

LOT 49 EASTERN PLAINS RIVERDEN R150^{SV} (Natural) HBR

BORN: 9/9/2020 **IDENT:** NEPR150 **GENETIC STATUS:** AMFU,CAFU,DDFU,NHFU
 EASTERN PLAINS MANGROVE M51^{SV} AYRVALE BARTEL E7^{PV}
SIRE: EASTERN PLAINS PITNACREE P110^{SV} NEPP110 **DAM:** EASTERN PLAINS EDA N115[#] NEPN115
 EASTERN PLAINS BERTHA J55[#] EASTERN PLAINS EDA G49^{PV}

Mid June 2022 Angus Australia Trans-Tasman Angus Cattle Evaluation (TACE)

TACE	CALVING EASE				GROWTH & MATERNAL					FERTILITY		CARCASE						STRUCTURE			
	CED	CEM	GL	BW	200	400	600	MCW	Milk	Scrot	DC	CWT	EMA	RIB	RUMP	RBV%	IMF%	NFI-F	DOC	ANG	CLAW
EBV	7.7	4.3	-5.7	2	47	84	104	79	23	0.5	-8.6	65	6.4	1.2	2.3	-0.8	2.5	0.17	-10	0.88	0.86
ACC	50%	45%	60%	71%	66%	65%	68%	64%	54%	65%	39%	57%	54%	58%	56%	56%	54%	47%	50%	59%	59%

SELECTION INDEX VALUES				BEEFCLASS STRUCTURAL ASSESSMENT SCORES									
Ang Breed	Domestic	Hvy Grain	Hvy Grass	F Claw Set	R Claw Set	F Ang	R Ang	R Leg Side	R Leg Hind	Mus Sc	Temp	Sheath	
\$239	\$198	\$313	\$222	6	6	5	6	4	5	C+	1	5	

Traits observed: BWT,200WT,400WT,600WT,SC,Scan(EMA,Rib,Rump,IMF),DOC, Structure(Claw Set x 1, Foot Angle x 1)

A high indexing, very low birthweight bull with good calving ease genetics. Strong for IMF. Ranks in the top 4% of the breed for the important fertility trait Days to Calving.



Scrotal Circumference: 39.5cm
Sperm Motility: 60.0%
Sperm Morphology: 73.0%

Purchaser..... \$.....

LOT 50 EASTERN PLAINS RENROW R144^{SV} (Natural) HBR

BORN: 3/9/2020 **IDENT:** NEPR144 **GENETIC STATUS:** AMFU,CAFU,DDFU,NHFU
 LD CAPITALIST 316^{PV} EASTERN PLAINS LIGNUM L44^{SV}
SIRE: EASTERN PLAINS PELTON P54^{SV} NEPP54 **DAM:** EASTERN PLAINS IDA N61[#] NEPN61
 EASTERN PLAINS LACEY M46[#] EASTERN PLAINS IDA H146[#]

Mid June 2022 Angus Australia Trans-Tasman Angus Cattle Evaluation (TACE)

TACE	CALVING EASE				GROWTH & MATERNAL					FERTILITY		CARCASE						STRUCTURE			
	CED	CEM	GL	BW	200	400	600	MCW	Milk	Scrot	DC	CWT	EMA	RIB	RUMP	RBV%	IMF%	NFI-F	DOC	ANG	CLAW
EBV	-1.9	0.1	-3.8	5.7	52	87	115	104	12	2.5	-4.8	68	8.4	0	0.7	0.8	1.5	0.19	-15	0.92	0.82
ACC	49%	42%	57%	71%	65%	66%	70%	64%	53%	68%	37%	56%	54%	56%	57%	52%	50%	42%	49%	61%	60%

SELECTION INDEX VALUES				BEEFCLASS STRUCTURAL ASSESSMENT SCORES									
Ang Breed	Domestic	Hvy Grain	Hvy Grass	F Claw Set	R Claw Set	F Ang	R Ang	R Leg Side	R Leg Hind	Mus Sc	Temp	Sheath	
\$184	\$153	\$235	\$167	6	6	6	6	5	6	C+	1	4	

Traits observed: BWT,200WT,400WT,600WT,SC,Scan(EMA,Rib,Rump,IMF),DOC, Structure(Claw Set x 1, Foot Angle x 1)



Scrotal Circumference: 42cm
Sperm Motility: 86.0%
Sperm Morphology: 64.0%

Purchaser..... \$.....

LOT 51 EASTERN PLAINS RATHMINES R25^{SV} (AI) HBR

BORN: 12/7/2020 **IDENT:** NEPR25 **GENETIC STATUS:** AMFU,CAFU,DDFU,NHFU
 G A R SURE FIRE^{SV} ARDROSSAN EQUATOR D19^{SV}
SIRE: G A R BONFIRE^{PV} USA18789776 **DAM:** EASTERN PLAINS IDA J35[#] NEPJ35
 CHAIR ROCK PROPHET 3054[#] EASTERN PLAINS IDA E78[#]

Mid June 2022 Angus Australia Trans-Tasman Angus Cattle Evaluation (TACE)

TACE	CALVING EASE				GROWTH & MATERNAL					FERTILITY		CARCASE						STRUCTURE			
	CED	CEM	GL	BW	200	400	600	MCW	Milk	Scrot	DC	CWT	EMA	RIB	RUMP	RBV%	IMF%	NFI-F	DOC	ANG	CLAW
EBV	3.7	0	-5.1	4.7	59	102	127	118	17	2.4	-6	77	6.4	-2.2	-2.8	1.9	1.8	-0.17	2	0.94	0.86
ACC	55%	46%	85%	75%	69%	70%	73%	68%	60%	71%	41%	61%	60%	62%	62%	59%	58%	49%	50%	61%	61%

SELECTION INDEX VALUES				BEEFCLASS STRUCTURAL ASSESSMENT SCORES									
Ang Breed	Domestic	Hvy Grain	Hvy Grass	F Claw Set	R Claw Set	F Ang	R Ang	R Leg Side	R Leg Hind	Mus Sc	Temp	Sheath	
\$223	\$195	\$290	\$202	6	6	5	6	5	6	C+	1	5	

Traits observed: GL,BWT,200WT,400WT,600WT,SC,Scan(EMA,Rib,Rump,IMF),DOC, Structure(Claw Set x 1, Foot Angle x 1)

A good indexing, high growth bull with good fertility & carcass genetics.



Scrotal Circumference: 41cm
Sperm Motility: 80.0%
Sperm Morphology: 71.5%

Purchaser..... \$.....



LOT 52 EASTERN PLAINS REDHILL R109^{SV} (Natural) HBR

BORN: 18/8/2020 **IDENT:** NEPR109 **GENETIC STATUS:** AMFU,CAFU,DDFU,NHFU
LD CAPITALIST 316^{PV} TE MANIA EMPEROR E343^{PV}
SIRE: EASTERN PLAINS PARINGI P32^{SV} NEPP32 **DAM:** EASTERN PLAINS EDA P116[#] NEPP116
EASTERN PLAINS EDA M128[#] EASTERN PLAINS EDA C100[#]

Mid June 2022 Angus Australia Trans-Tasman Angus Cattle Evaluation (TACE)

TACE	CALVING EASE				GROWTH & MATERNAL				FERTILITY				CARCASS						STRUCTURE		
	CED	CEM	GL	BW	200	400	600	MCW	Milk	Scrot	DC	CWT	EMA	RIB	RUMP	RBY%	IMF%	NFI-F	DOC	ANG	CLAW
EBV	7.1	2.5	-4.3	1.6	57	73	84	65	23	1.5	-8.9	78	6.0	2.6	4.2	0.7	2.6	0.19	9	1.06	1.08
ACC	55%	42%	59%	72%	65%	68%	72%	66%	56%	69%	37%	57%	56%	59%	59%	54%	52%	43%	46%	61%	61%

WITHDRAWN

Traits observed: CE,BWT,200WT,400WT,600WT,SC,Scan(EMA,Rib,Rump,IMF),DOC, Structure(Claw Set x 1, Foot Angle x 1)

A good indexing bull out of a first calf heifer. Good calving ease with high growth genetics & good carcass attributes.



Scrotal Circumference: 42cm
Sperm Motility: 86.0%
Sperm Morphology: 76.0%

Purchaser..... \$.....

LOT 53 EASTERN PLAINS RANNOCK R123^{SV} (Natural) HBR

BORN: 26/8/2020 **IDENT:** NEPR123 **GENETIC STATUS:** AMFU,CAFU,DDC,NHFU
EASTERN PLAINS MANGROVE M51^{SV} EASTERN PLAINS NEW DESIGN E145^{PV}
SIRE: EASTERN PLAINS PITNACREE P110^{SV} NEPP110 **DAM:** EASTERN PLAINS ABBA G114[#] NEPG114
EASTERN PLAINS BERTHA J55[#] EASTERN PLAINS ABBA A7[#]

Mid June 2022 Angus Australia Trans-Tasman Angus Cattle Evaluation (TACE)

TACE	CALVING EASE				GROWTH & MATERNAL				FERTILITY				CARCASS						STRUCTURE		
	CED	CEM	GL	BW	200	400	600	MCW	Milk	Scrot	DC	CWT	EMA	RIB	RUMP	RBY%	IMF%	NFI-F	DOC	ANG	CLAW
EBV	4.6	2.5	-4.3	1.6	37	73	84	65	23	1.5	-8.9	52	4.1	2.6	4.2	-2	2.6	0.19	9	1.06	0.94
ACC	49%	42%	59%	72%	66%	68%	72%	66%	56%	69%	37%	57%	56%	59%	59%	54%	52%	43%	47%	61%	61%

Traits observed: BWT,200WT,400WT,600WT,SC,Scan(EMA,Rib,Rump,IMF),DOC, Structure(Claw Set x 1, Foot Angle x 1)



Scrotal Circumference: 43cm
Sperm Motility: 84.0%
Sperm Morphology: 78.0%

Purchaser..... \$.....

LOT 54 EASTERN PLAINS RAMSAY R119^{SV} (Natural) HBR

BORN: 23/8/2020 **IDENT:** NEPR119 **GENETIC STATUS:** AMFU,CAFU,DDF,NHFU
EASTERN PLAINS MANGROVE M51^{SV} TE MANIA EMPEROR E343^{PV}
SIRE: EASTERN PLAINS PITNACREE P110^{SV} NEPP110 **DAM:** EASTERN PLAINS ABBA N25[#] NEPN25
EASTERN PLAINS BERTHA J55[#] EASTERN PLAINS ABBA G114[#]

Mid June 2022 Angus Australia Trans-Tasman Angus Cattle Evaluation (TACE)

TACE	CALVING EASE				GROWTH & MATERNAL				FERTILITY				CARCASS						STRUCTURE		
	CED	CEM	GL	BW	200	400	600	MCW	Milk	Scrot	DC	CWT	EMA	RIB	RUMP	RBY%	IMF%	NFI-F	DOC	ANG	CLAW
EBV	4.2	1.8	-4.9	2.8	44	83	103	87	22	1.3	-8.9	60	5	2.4	2.9	-1.5	2.4	0.2	7	-	-
ACC	48%	43%	60%	67%	62%	63%	66%	62%	53%	63%	39%	55%	53%	58%	56%	55%	53%	46%	50%	-	-

Traits observed: BWT,200WT,400WT,600WT,SC,Scan(EMA,Rib,Rump,IMF),DOC

A low birthweight bull who ranks in the top 3% of the breed for the important fertility trait Days to Calving. Good IMF.



Scrotal Circumference: 38cm
Sperm Motility: 68.0%
Sperm Morphology: 64.5%

Purchaser..... \$.....



Eastern Plains Angus 2022 Sale Bulls

LOT 55 EASTERN PLAINS RAGLAN R111^{SV} (Natural) HBR

BORN: 19/8/2020 **IDENT:** NEPR111 **GENETIC STATUS:** AMFU,CAFU,DDFU,NHFU

LD CAPITALIST 316^{PV}

SITZ NEW DESIGN 458N[#]

SIRE: EASTERN PLAINS PELTON P54^{SV} NEPP54
EASTERN PLAINS LACEY M46[#]

DAM: EASTERN PLAINS ABBA F85[#] NEPF85
EASTERN PLAINS ABBA X119[#]

Mid June 2022 Angus Australia Trans-Tasman Angus Cattle Evaluation (TACE)

TACE	CALVING EASE				GROWTH & MATERNAL					FERTILITY		CARCASE						STRUCTURE			
	CE	CM	GL	BW	200	400	600	MCW	Milk	Scrot	DC	CWT	EMA	RIB	RUMP	RBV%	IMF%	NFI-F	DOC	ANG	CLAW
EBV	-5.1	-1.5	-1.7	3	50	110	102	92	15	0.8	-2.6	69	7.2	-1	8	0.9	2	-0.1	8	0.98	0.94
ACC	53%	56%	57%	72%	67%	71%	65%	5%	6%	40%	58%	56%	58%	59%	54%	54%	45%	50%	61%	63%	

SELECTION INDEX VALUES				BEEFCLASS STRUCTURAL ASSESSMENT SCORES									
Ang Breed	Domestic	Hvy Grain	Hvy Grass	F Claw Set	R Claw Set	F Ang	R Ang	R Leg Side	R Leg Hind	Mus Sc	Temp	Sheath	
\$155	\$134	\$208	\$134	6	6	5	6	5	5	C+	2	4	

Traits observed: BWT,200WT,400WT,600WT,SC,Scan(EMA,Rib,Rump,IMF),DOC, Structure(Claw Set x 1, Foot Angle x 1)



Scrotal Circumference: 40cm
Sperm Motility: 86.0%
Sperm Morphology: TBA

Purchaser..... \$.....

LOT 56 EASTERN PLAINS ROB ROY R121^{SV} (Natural) HBR

BORN: 23/8/2020 **IDENT:** NEPR121 **GENETIC STATUS:** AMFU,CAFU,DDFU,NHFU

BOOROOMOOKA BARTEL K274^{SV}

PRIME JUGGERNAUT J15^{SV}

SIRE: EASTERN PLAINS PEMBROKE P55^{SV} NEPP55
EASTERN PLAINS ABBA E116[#]

DAM: EASTERN PLAINS ABBA N17[#] NEPN17
EASTERN PLAINS ABBA H23[#]

Mid June 2022 Angus Australia Trans-Tasman Angus Cattle Evaluation (TACE)

TACE	CALVING EASE				GROWTH & MATERNAL					FERTILITY		CARCASE						STRUCTURE			
	CE	CM	GL	BW	200	400	600	MCW	Milk	Scrot	DC	CWT	EMA	RIB	RUMP	RBV%	IMF%	NFI-F	DOC	ANG	CLAW
EBV	3.3	7.7	-5.6	3	48	82	104	94	15	0.8	-5.8	67	8	0.1	-0.8	1	1.1	-0.02	8	0.76	0.78
ACC	51%	44%	64%	72%	67%	68%	71%	66%	55%	69%	39%	58%	57%	59%	59%	55%	54%	45%	49%	61%	61%

SELECTION INDEX VALUES				BEEFCLASS STRUCTURAL ASSESSMENT SCORES									
Ang Breed	Domestic	Hvy Grain	Hvy Grass	F Claw Set	R Claw Set	F Ang	R Ang	R Leg Side	R Leg Hind	Mus Sc	Temp	Sheath	
\$194	\$168	\$244	\$174	5	6	5	6	5	5	C	1	5	

Traits observed: BWT,200WT,400WT,600WT,SC,Scan(EMA,Rib,Rump,IMF),DOC, Structure(Claw Set x 1, Foot Angle x 1)

A low birthweight good calving ease bull. Strong genetic merit for structural traits.



Scrotal Circumference: 38cm
Sperm Motility: 84.0%
Sperm Morphology: 92.0%

Purchaser..... \$.....

LOT 57 EASTERN PLAINS RAIN TREE R74^{SV} (AI) APR

BORN: 3/8/2020 **IDENT:** NEPR74 **GENETIC STATUS:** AMFU,CAFU,DDF,NHFU

TE MANIA FOE F734^{SV}

LD CAPITALIST 316^{PV}

SIRE: CHILTERN PARK MOE M6^{PV} GTNM6
STRATHEWEN TIMEOUT JADE F15^{PV}

DAM: EASTERN PLAINS MISS EDA P137[#] NEPP137
EASTERN PLAINS MISS EDA M188[#]

Mid June 2022 Angus Australia Trans-Tasman Angus Cattle Evaluation (TACE)

TACE	CALVING EASE				GROWTH & MATERNAL					FERTILITY		CARCASE						STRUCTURE			
	CE	CM	GL	BW	200	400	600	MCW	Milk	Scrot	DC	CWT	EMA	RIB	RUMP	RBV%	IMF%	NFI-F	DOC	ANG	CLAW
EBV	7.9	5.4	-3.1	3.6	53	103	134	98	24	1.4	-3.1	75	6	-1.9	-2	0.8	1.9	0.02	9	0.74	0.7
ACC	60%	48%	84%	74%	70%	70%	73%	68%	58%	72%	41%	61%	61%	62%	62%	58%	58%	52%	57%	65%	65%

SELECTION INDEX VALUES				BEEFCLASS STRUCTURAL ASSESSMENT SCORES									
Ang Breed	Domestic	Hvy Grain	Hvy Grass	F Claw Set	R Claw Set	F Ang	R Ang	R Leg Side	R Leg Hind	Mus Sc	Temp	Sheath	
\$221	\$185	\$286	\$203	6	6	5	6	6	6	C+	2	4	

Traits observed: GL,CE,BWT,200WT,400WT,600WT,SC,Scan(EMA,Rib,Rump,IMF),DOC, Structure (Claw Set x 1, Foot Angle x 1)

A good indexing bull out of a first calf heifer. A great combination of moderate birthweight, good calving ease with high growth & moderate mature cow weight genetics. Strong genetic merit for structural traits.



Scrotal Circumference: 40.5cm
Sperm Motility: 89.0%
Sperm Morphology: 69.0%

Purchaser..... \$.....

DISCLAIMER AND PRIVACY INFORMATION

Attention Buyer

Animal details included in this catalogue, including but not limited to pedigree, DNA information, Estimated Breeding Values (EBVs) and Index values, are based on information provided by the breeder or owner of the animal. Whilst all reasonable care has been taken to ensure that the information provided in this catalogue was correct at the time of publication, Angus Australia will assume no responsibility for the accuracy or completeness of the information, nor for the outcome (including consequential loss) of any action taken based on this information.

Parent Verification Suffixes

The animals listed within this catalogue including its pedigree, are displaying a Parent Verification Suffix which indicates the DNA parent verification status that has been conducted on the animal. The Parent Verification Suffixes that will appear at the end of each animal's name.

The suffix displayed at the end of each animal's name indicates the DNA parentage verification that has been conducted by Angus Australia.

PV : both parents have been verified by DNA.

SV : the sire has been verified by DNA.

DV : the dam has been verified by DNA.

: DNA verification has not been conducted.

E : DNA verification has identified that the sire and/or dam may possibly be incorrect, but this cannot be confirmed conclusively.

Privacy Information

In order for Angus Australia to process the transfer of a registered animal in this catalogue, the vendor will need to provide certain information to Angus Australia and the buyer consents to the collection and disclosure of that information by Angus Australia in certain circumstances. If the buyer does not wish for his or her information to be stored and disclosed by Angus Australia, the buyer must complete the form included below and forward it to Angus Australia. If the form is not completed, the buyer will be taken to have consented to the disclosure of such information.

BUYERS OPTION TO OPT OUT OF DISCLOSING PERSONAL INFORMATION TO ANGUS AUSTRALIA

If you do not complete this form, you will be taken to have consented to Angus Australia using your name, address and phone number for the purposes of effecting a change of registration of the animal(s) that you have purchased, maintaining its database and disclosing that information to its members on its website.

I, the buyer of animals with the following ids.....

.....(name) do not consent to Angus Australia using my name, address and phone number for the purposes of effecting a change of registration of the animals I have mentioned above that I have purchased, maintaining its database and disclosing that information to its members on its website.

Name: Signature:

Date:

Please forward this completed consent form to Angus Australia, 86 Glen Innes Road, Armidale NSW 2350.



If you have any questions or queries regarding any of the above, please contact Angus Australia on (02) 6773 4600 or email office@angusaustralia.com.au



Notes

A series of horizontal dotted lines for writing notes, starting below a solid horizontal line and extending across the width of the page.

**BID CARD
NUMBER**

Buyers Instruction Slip

Eastern Plains Angus Bull Sale Wednesday 3rd August 2022

** No verbal instructions can be accepted.*

Name:

Address:

Phone:

Email:

Purchaser Property Identification Code (PIC):

BILLING DETAILS

Please send the account direct to me.

Please send the account to my agent, who is:

LOTS PURCHASED:

Transfer of Bull Registration/s Required

Yes

No

TRANSPORT ARRANGEMENTS:

INSURANCE

12 months

6 months

3 months

SIGNATURE OF PURCHASER OR AGENT

Name:

Phone:

Signature

Date:

SPECIAL NOTE TO BUYERS

In the interest of buyers, and to prevent the occurrence of mistakes, all instructions concerning the delivery and trucking of stock must be given in writing and signed by the buyer or their representative.



Lot 3: EASTERN PLAINS RIMBANDA R75
Sire: BALDRIDGE BEAST MODE B074



Lot 4: EASTERN PLAINS RAMAJON R49
Sire: CHILTERN PARK MOE M6



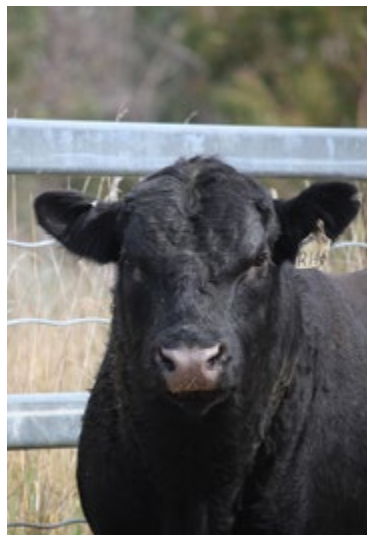
Lot 8: EASTERN PLAINS RAVENSDALE R65
Sire: BALDRIDGE 38 SPECIAL



Lot 5: EASTERN PLAINS ROCKLEY R81
Sire: BALDRIDGE BEAST MODE B074



Lot 6: EASTERN PLAINS REDLANDS R45
Sire: CHILTERN PARK MOE M6



Eastern Plains Angus

Meet the sale team!

Individual lot photos at www.easternplainsangus.com.au/gallery



EASTERN PLAINS ANGUS **BULL WALK**

TUESDAY 26 JULY 2022 FROM 1PM-3PM

Join us to inspect our sale bulls.

Andrew & Sally White

T: (02) 6779 4237

M: 0477 359 057

E: easternplains@activ8.net.au

www.easternplainsangus.com.au



“Getting you ahead”

“EASTERN PLAINS” GUYRA NSW