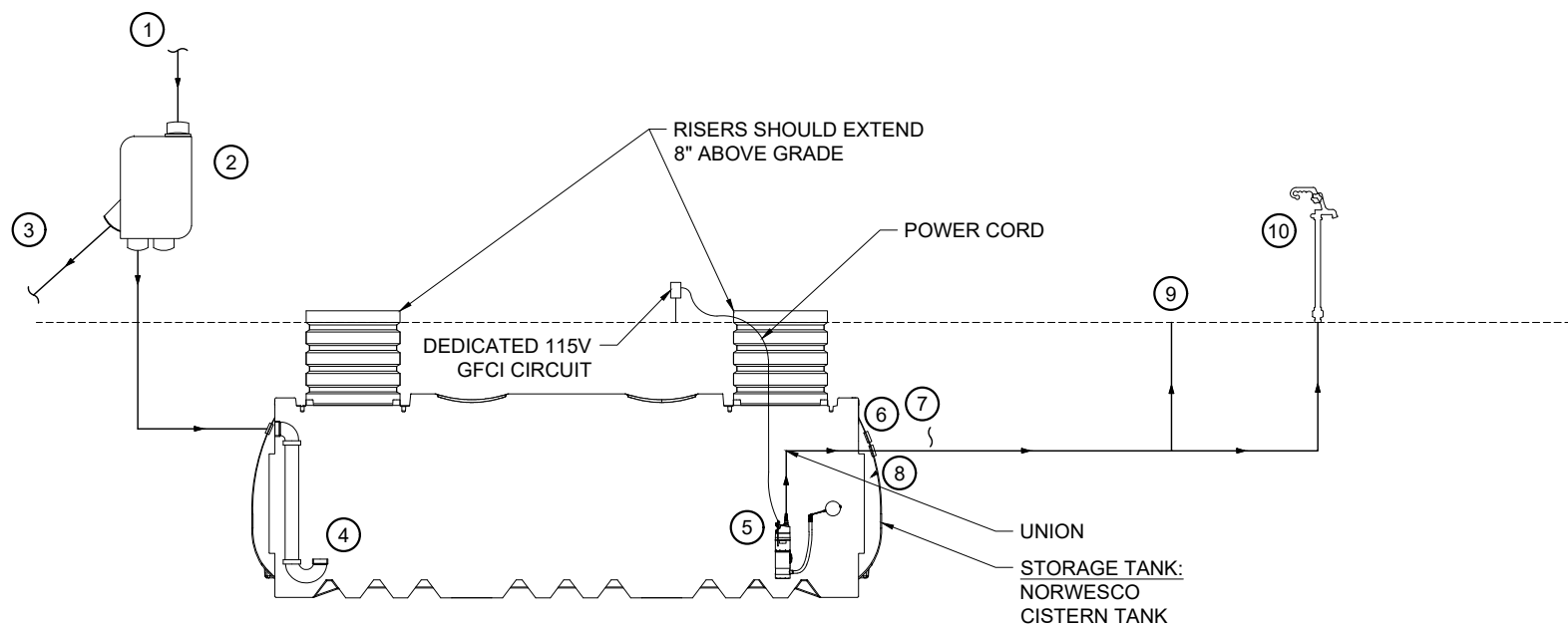


- | | |
|--|---|
| ① WATERLINE FROM WELL | ⑦ NORMALLY OPEN FLOAT SWITCH |
| ② ELECTRIC TO WELL | ⑧ FRANKLIN C1 OR SPRINGER SERIES SUBMERSIBLE CISTERN PUMP |
| ③ ELECTRIC FROM PANEL | ⑨ TANK PENETRATION GASKET |
| ④ PUMP SAVER | ⑩ PRESSURE TANK PUMP CONTROL/TANK TEE KIT |
| ⑤ TANK PENETRATION GASKET | ⑪ END USE |
| ⑥ NORMALLY CLOSED FLOAT SWITCH WITH WEIGHT | |



www.rainbrothers.com

For illustrative purposes only. Please consult engineer and local building codes before proceeding with installation.

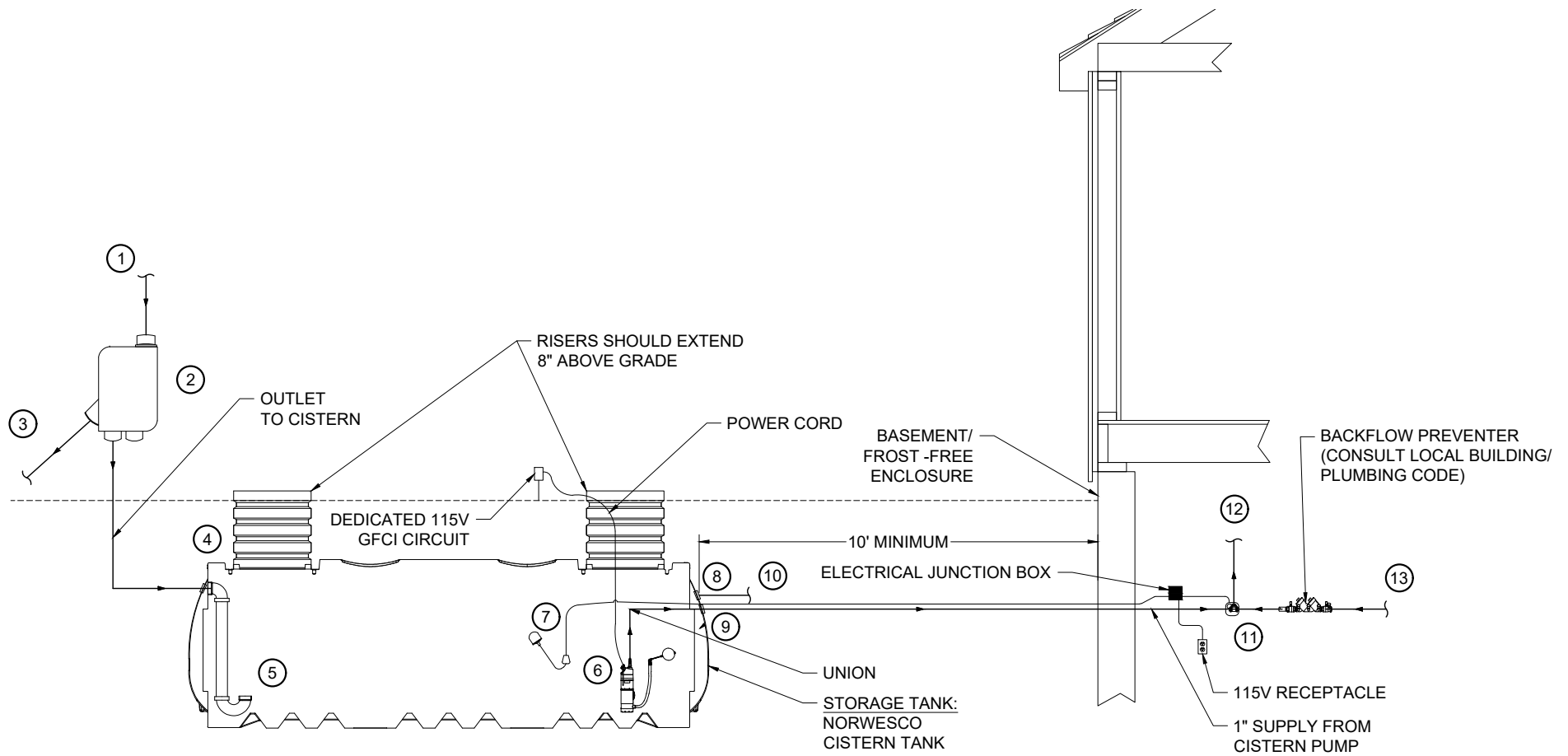


- | | |
|---|-----------------------------------|
| ① RAINWATER COLLECTION POINT (ROOF DRAINS, GUTTERS, ETC.) | ⑥ 4" TANK PENETRATION GASKET |
| ② MONJOLIN FILTER | ⑦ OVERFLOW (DAYLIGHT) |
| ③ FIRST FLUSH AND EXCESS WATER OUTLET | ⑧ 1" TANK PENETRATION GASKET |
| ④ CALMING INLET | ⑨ IRRIGATION STUB-OUT (IF NEEDED) |
| ⑤ STROM BSP OR SPRINGER SERIES AUTOMATIC SUBMERSIBLE PUMP WITH FLOATING INTAKE FILTER | ⑩ FROST-FREE HYDRANT |



www.rainbrothers.com

For illustrative purposes only. Please consult engineer and local building codes before proceeding with installation.

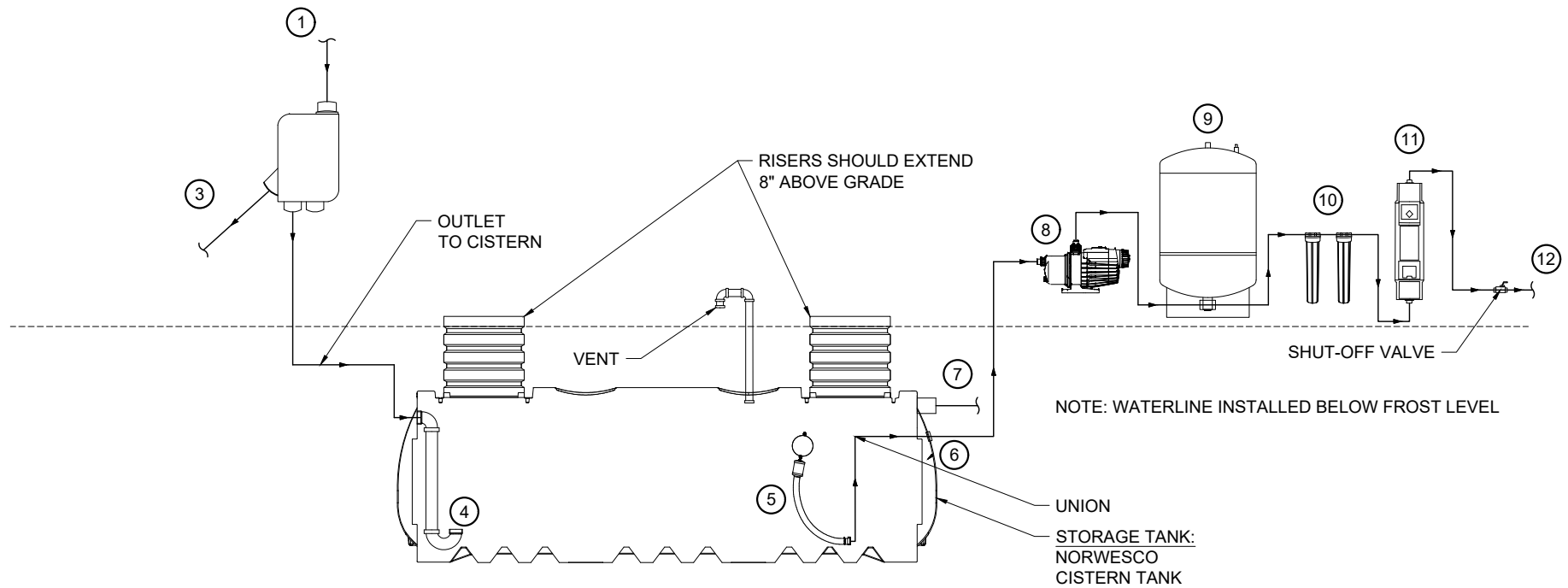


- | | |
|---|------------------------------|
| ① RAINWATER COLLECTION POINT (ROOF DRAINS, GUTTERS, ETC.) | ⑧ 4" TANK PENETRATION GASKET |
| ② MONJOLIN FILTER | ⑨ 1" TANK PENETRATION GASKET |
| ③ FIRST FLUSH AND EXCESS WATER OUTLET | ⑩ OVERFLOW (DAYLIGHT) |
| ④ 4" TANK PENETRATION GASKET | ⑪ MOTORIZED 3-WAY VALVE |
| ⑤ CALMING INLET | ⑫ END USE |
| ⑥ STROM BSP OR SPRINGER SERIES AUTOMATIC SUBMERSIBLE PUMP WITH FLOATING INTAKE FILTER | ⑬ BACK-UP WATER SUPPLY |
| ⑦ TWO-WAY FLOAT SWITCH WITH WEIGHT | |



www.rainbrothers.com

For illustrative purposes only. Please consult engineer and local building codes before proceeding with installation.



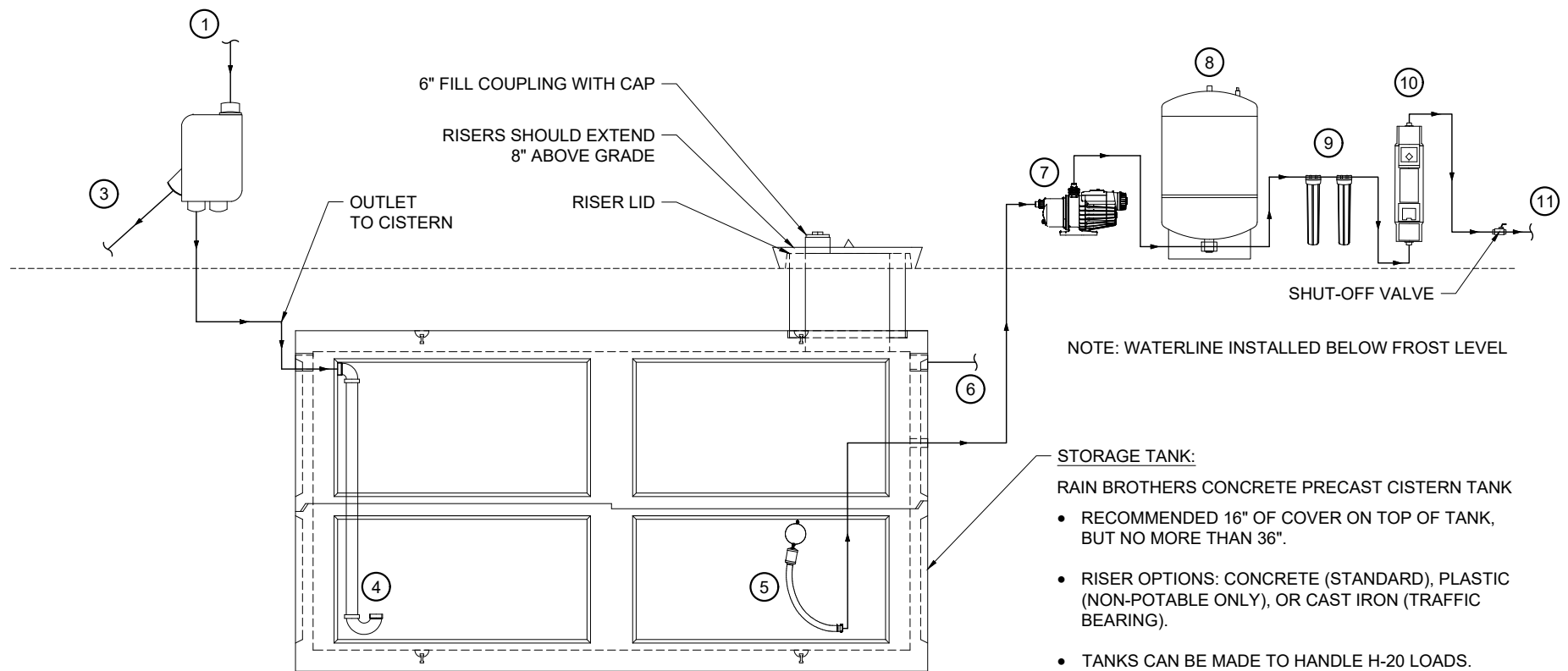
- ① RAINWATER COLLECTION POINT (ROOF DRAINS, GUTTERS, ETC.)
- ② MONJOLIN FILTER
- ③ FIRST FLUSH AND EXCESS WATER OUTLET
- ④ CALMING INLET
- ⑤ FLOATING STAINLESS STEEL SUCTION FILTER WITH CHECK VALVE
- ⑥ RB TANK PENETRATION GASKET

- ⑦ OVERFLOW
- ⑧ FRANKLIN JET PUMP OR EQUIVALENT
- ⑨ PRESSURE TANK PUMP CONTROL/TANK TEE KIT
- ⑩ TWO SIDE-BY-SIDE SEDIMENT FILTERS
- ⑪ UV STERILIZER
- ⑫ END USE



www.rainbrothers.com

For illustrative purposes only. Please consult engineer and local building codes before proceeding with installation.



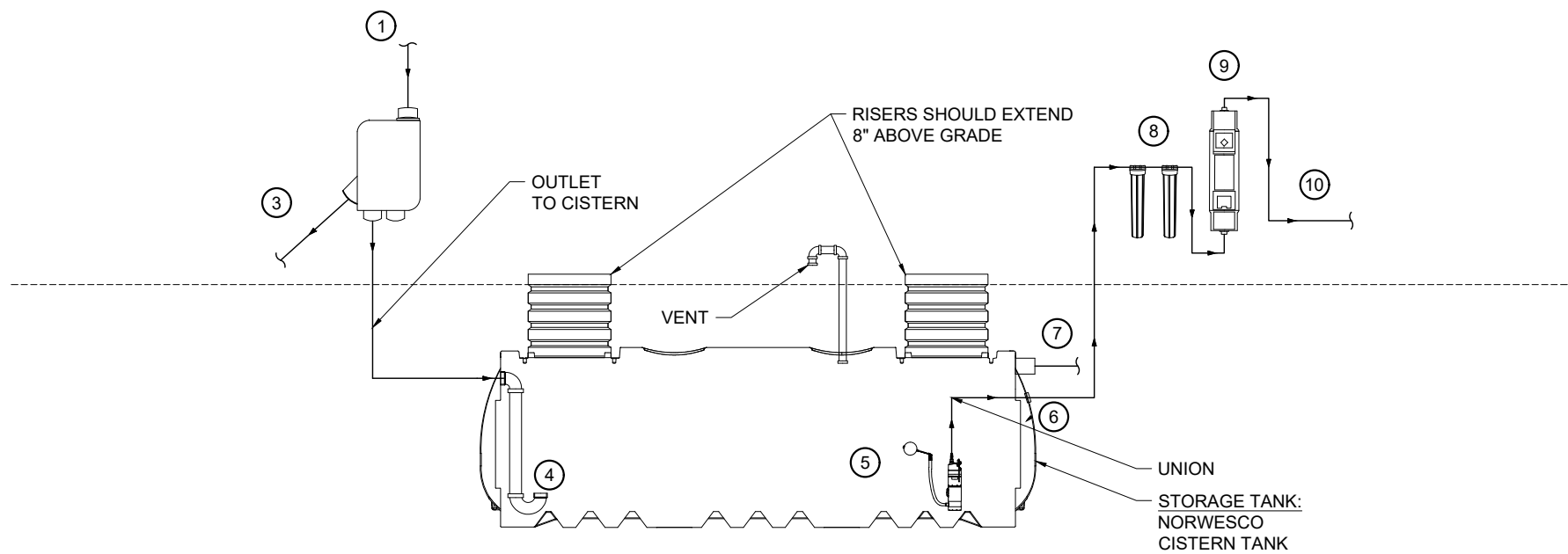
- ① RAINWATER COLLECTION POINT (ROOF DRAINS, GUTTERS, ETC.)
- ② MONJOLIN FILTER
- ③ FIRST FLUSH AND EXCESS WATER OUTLET
- ④ CALMING INLET
- ⑤ FLOATING STAINLESS STEEL SUCTION FILTER WITH CHECK VALVE
- ⑥ OVERFLOW

- ⑦ FRANKLIN JET PUMP OR EQUIVALENT
- ⑧ PRESSURE TANK PUMP CONTROL/TANK TEE KIT
- ⑨ TWO SIDE-BY-SIDE SEDIMENT FILTERS
- ⑩ UV STERILIZER
- ⑪ END USE



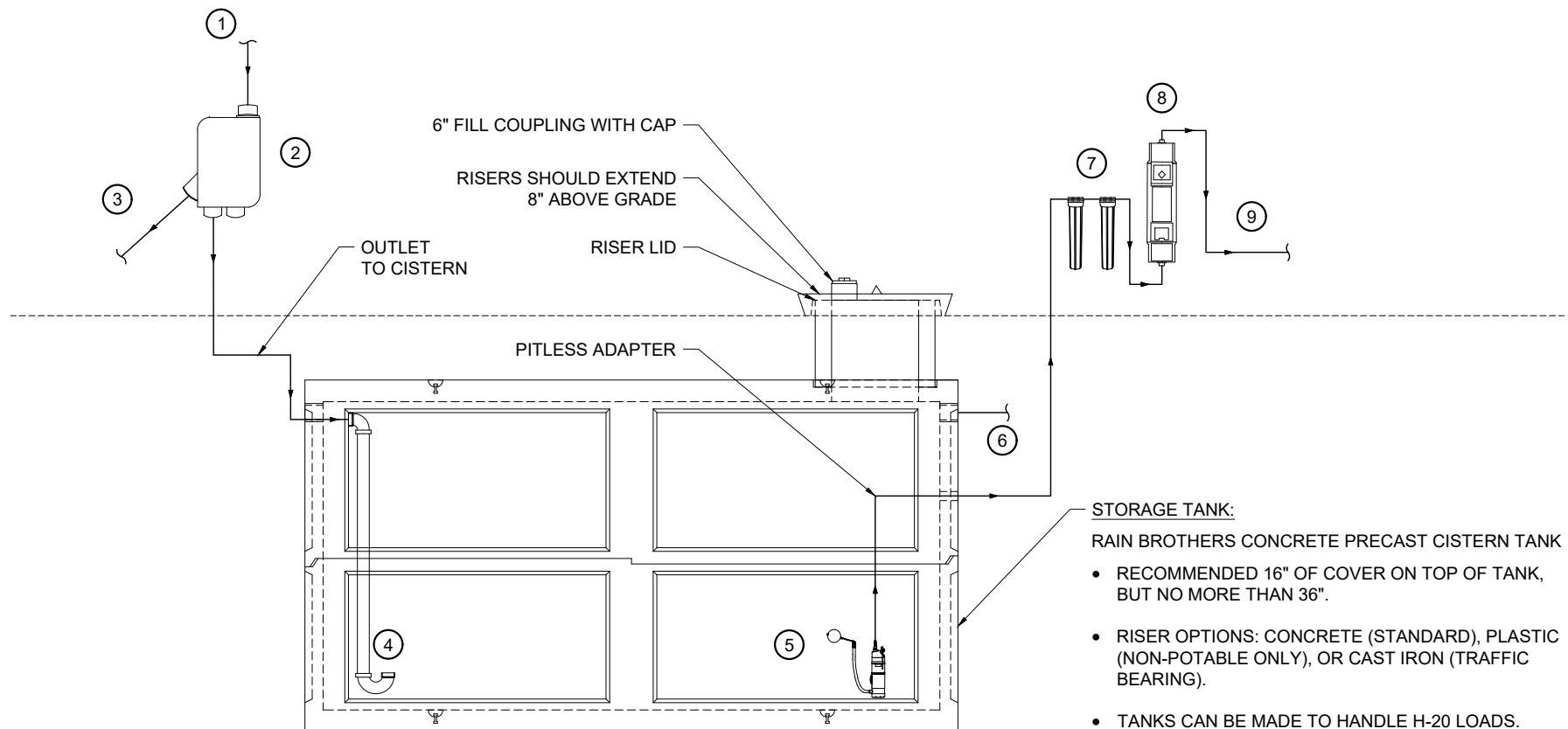
www.rainbrothers.com

For illustrative purposes only. Please consult engineer and local building codes before proceeding with installation.



www.rainbrothers.com

For illustrative purposes only. Please consult engineer and local building codes before proceeding with installation.



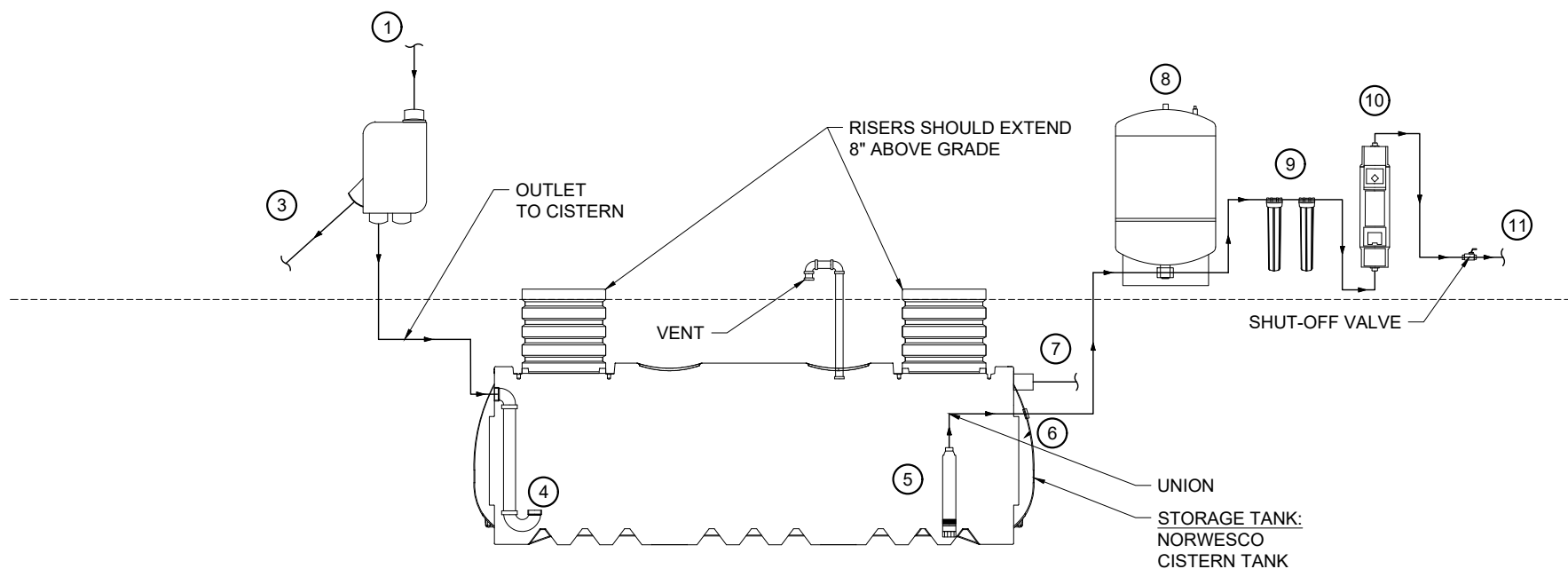
- ① RAINWATER COLLECTION POINT (ROOF DRAINS, GUTTERS, ETC.)
- ② MONJOLIN FILTER
- ③ FIRST FLUSH AND EXCESS WATER OUTLET
- ④ CALMING INLET
- ⑤ STROM BSP OR SPRINGER SERIES AUTOMATIC SUBMERSIBLE PUMP WITH FLOATING INTAKE FILTER

- ⑥ OVERFLOW
- ⑦ TWO SIDE-BY-SIDE SEDIMENT FILTERS
- ⑧ UV STERILIZER
- ⑨ END USE



www.rainbrothers.com

For illustrative purposes only. Please consult engineer and local building codes before proceeding with installation.



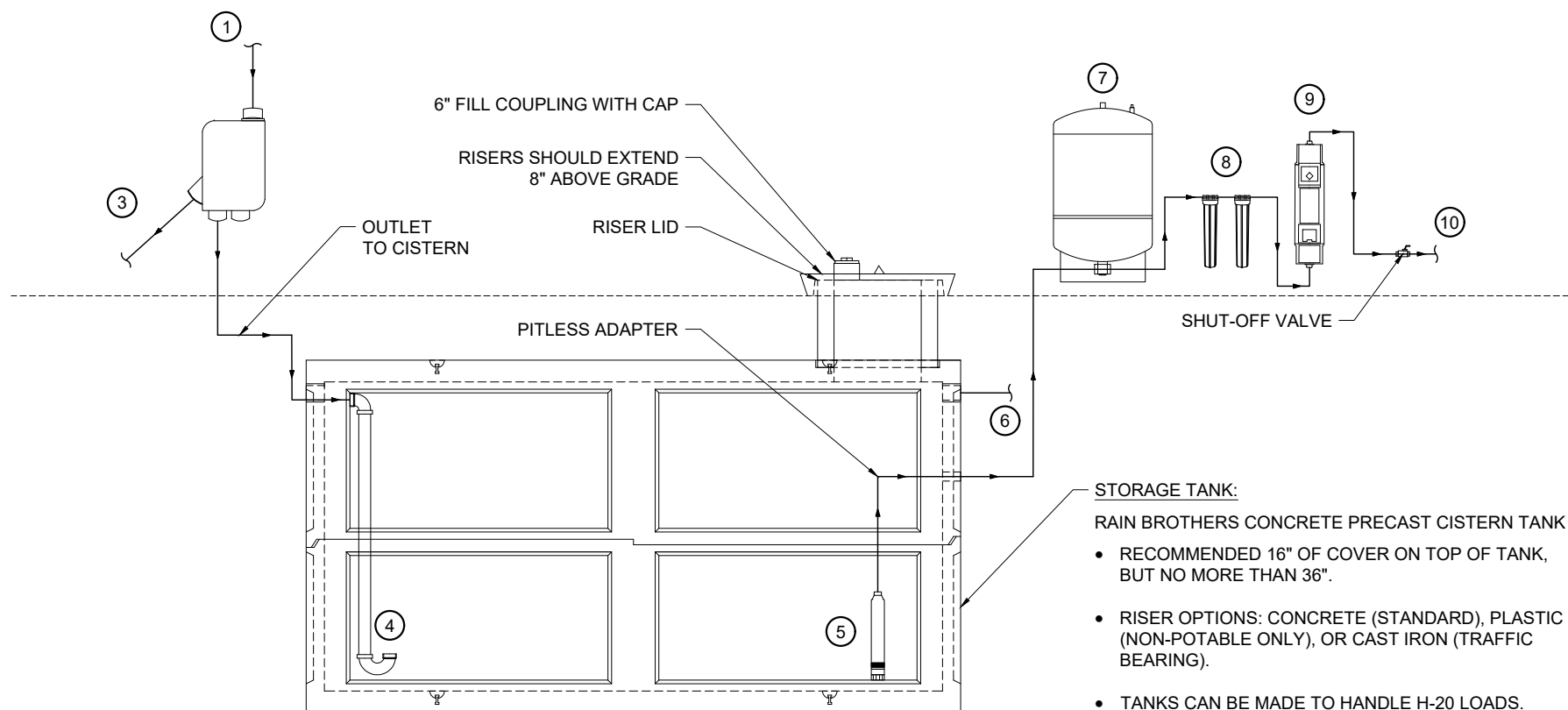
- ① RAINWATER COLLECTION POINT (ROOF DRAINS, GUTTERS, ETC.)
- ② MONJOLIN FILTER
- ③ FIRST FLUSH AND EXCESS WATER OUTLET
- ④ CALMING INLET
- ⑤ FRANKLIN C1 OR SPRINGER SERIES SUBMERSIBLE CISTERN PUMP
- ⑥ RB TANK PENETRATION GASKET

- ⑦ OVERFLOW
- ⑧ PRESSURE TANK PUMP CONTROL/TANK TEE KIT
- ⑨ TWO SIDE-BY-SIDE SEDIMENT FILTERS
- ⑩ UV STERILIZER
- ⑪ END USE



www.rainbrothers.com

For illustrative purposes only. Please consult engineer and local building codes before proceeding with installation.



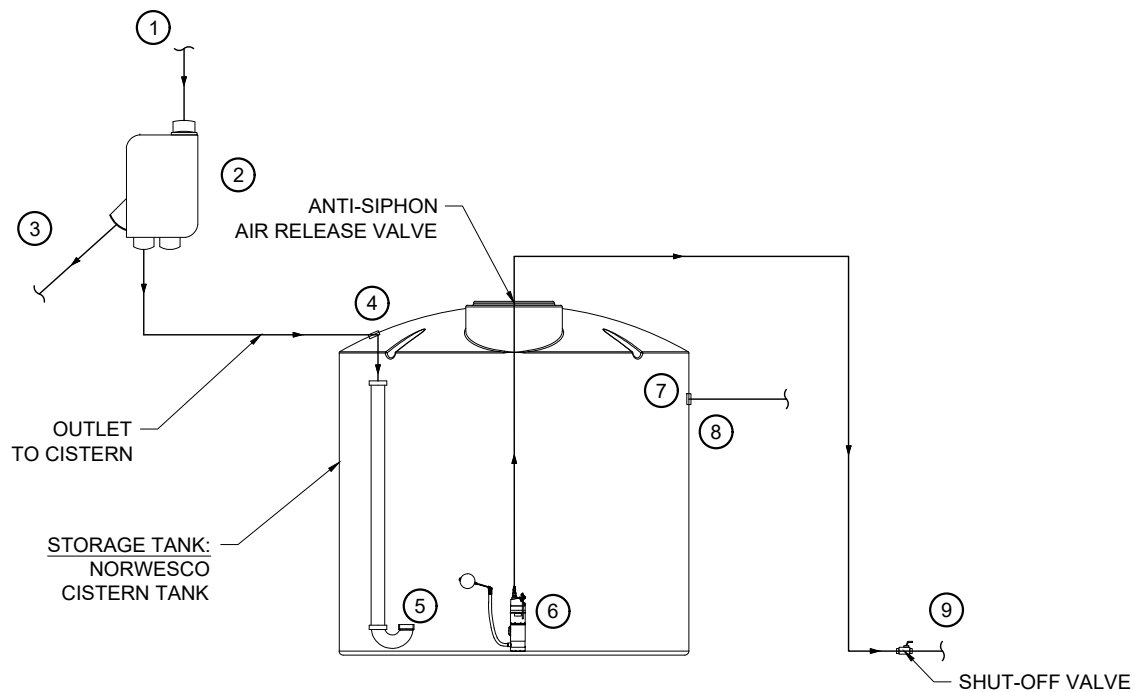
- ① RAINWATER COLLECTION POINT (ROOF DRAINS, GUTTERS, ETC.)
- ② MONJOLIN FILTER
- ③ FIRST FLUSH AND EXCESS WATER OUTLET
- ④ CALMING INLET
- ⑤ FRANKLIN C1 OR SPRINGER SERIES SUBMERSIBLE CISTERN PUMP

- ⑥ OVERFLOW
- ⑦ PRESSURE TANK PUMP CONTROL/TANK TEE KIT
- ⑧ TWO SIDE-BY-SIDE SEDIMENT FILTERS
- ⑨ UV STERILIZER
- ⑩ END USE



www.rainbrothers.com

For illustrative purposes only. Please consult engineer and local building codes before proceeding with installation.



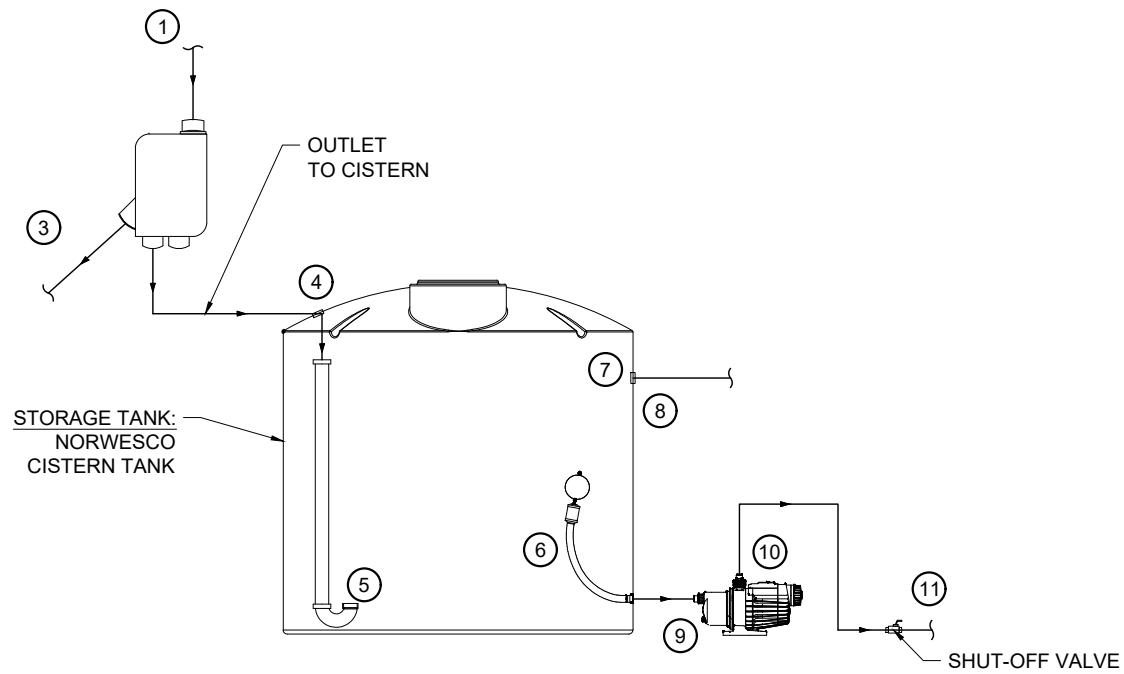
- ① RAINWATER COLLECTION POINT (ROOF DRAINS, GUTTERS, ETC.)
- ② MONJOLIN FILTER
- ③ FIRST FLUSH AND EXCESS WATER OUTLET
- ④ TANK PENETRATION GASKET
- ⑤ CALMING INLET

- ⑥ STROM BSP OR SPRINGER SERIES AUTOMATIC SUBMERSIBLE PUMP WITH FLOATING INTAKE FILTER
- ⑦ TANK PENETRATION GASKET
- ⑧ OVERFLOW
- ⑨ END USE



www.rainbrothers.com

For illustrative purposes only. Please consult engineer and local building codes before proceeding with installation.



- | | |
|--|--|
| ① RAINWATER COLLECTION POINT (ROOF DRAINS, GUTTERS, ETC.) | ⑦ TANK PENETRATION GASKET |
| ② MONJOLIN FILTER | ⑧ OVERFLOW |
| ③ FIRST FLUSH AND EXCESS WATER OUTLET | ⑨ FRANKLIN JET PUMP PUMP OR EQUIVALENT |
| ④ TANK PENETRATION GASKET | ⑩ WEATHERTITE PUMP COVER |
| ⑤ CALMING INLET | ⑪ END USE |
| ⑥ FLOATING STAINLESS STEEL SUCTION FILTER WITH CHECK VALVE | |



www.rainbrothers.com

For illustrative purposes only. Please consult engineer and local building codes before proceeding with installation.