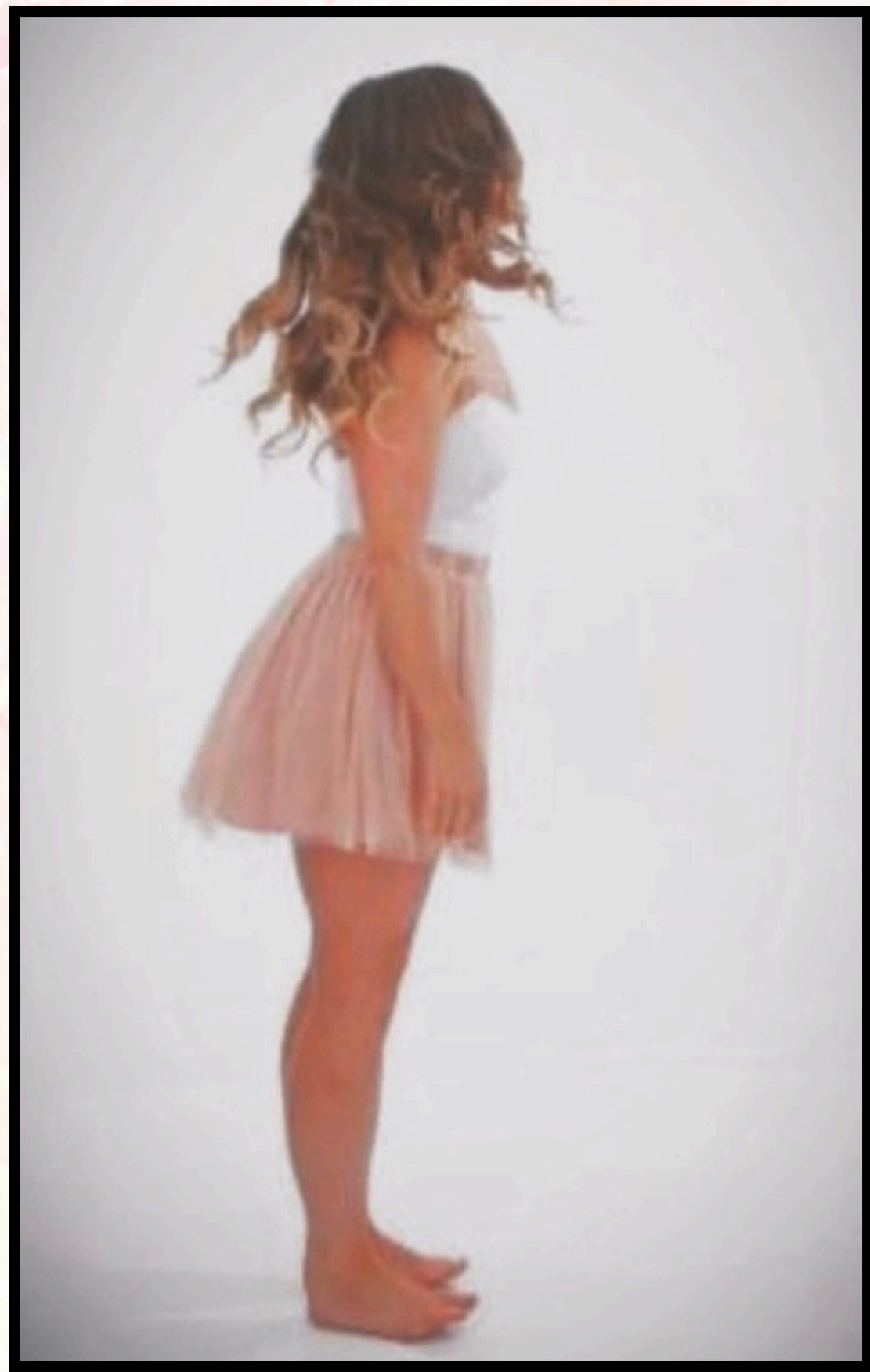


Ballet Dress Code



During the school year, Ballet Levels A–D follow a dress code that helps teachers best support each dancer's growth by clearly seeing alignment and technique. It also creates a neat, uniform class environment and encourages focus and discipline. Thank you for helping us maintain these standards by following the dress code for each class!

*We loved the Mariia leotards we used the last few years, but Discount Dance has gone out of business, and discontinued Mariia! :(

We plan to use **Corps Dancewear** for years to come (their quality/value/customer service is really great) so we'd love to build an inventory of leotards for a swap rack. So, please feel free to donate any leotards your dancer outgrows, and check the rack for your dancer, too.

Please be sure to use this coupon code to receive discounted Nutmeg's pricing: *KD_NDTC860*

All Ballet Levels: Hair should be in a clean, tight bun, or twist. If your dancer has shorter hair, we ask that they please wear a hair band to keep hair out of their face.

Pink tights and pink split-sole ballet shoes, please.

Gents: Black pants/joggers, white t-shirt or tank top, black ballet shoes.

Ballet skirts, wrap sweaters, and leg warmers are the only approved cover-ups. Thank you!

Ballet A

Color: **Aquamarine**

Cap Sleeve Leotard

Tank Leotard

Camisole Leotard

Ballet B

Color: **Hibiscus**

Cap Sleeve Leotard – Child Size

Cap Sleeve Leotard – Adult Size

Tank Leotard – Child Size

Tank Leotard – Adult Size

Camisole Leotard – Child Size

Camisole Leotard – Adult Size

Ballet C

Color: **Royal Blue**

Cap Sleeve Leotard – Child Size

Cap Sleeve Leotard – Adult Size

Tank Leotard – Child Size

Tank Leotard – Adult Size

Camisole Princess Seams – Child Size

Camisole Princess Seams – Adult Size

Ballet D

Color: **Lilac**

Cap Sleeve Leotard – Adult Size

Tank Leotard – Adult Size

Camisole Princess Seams – Adult Size