

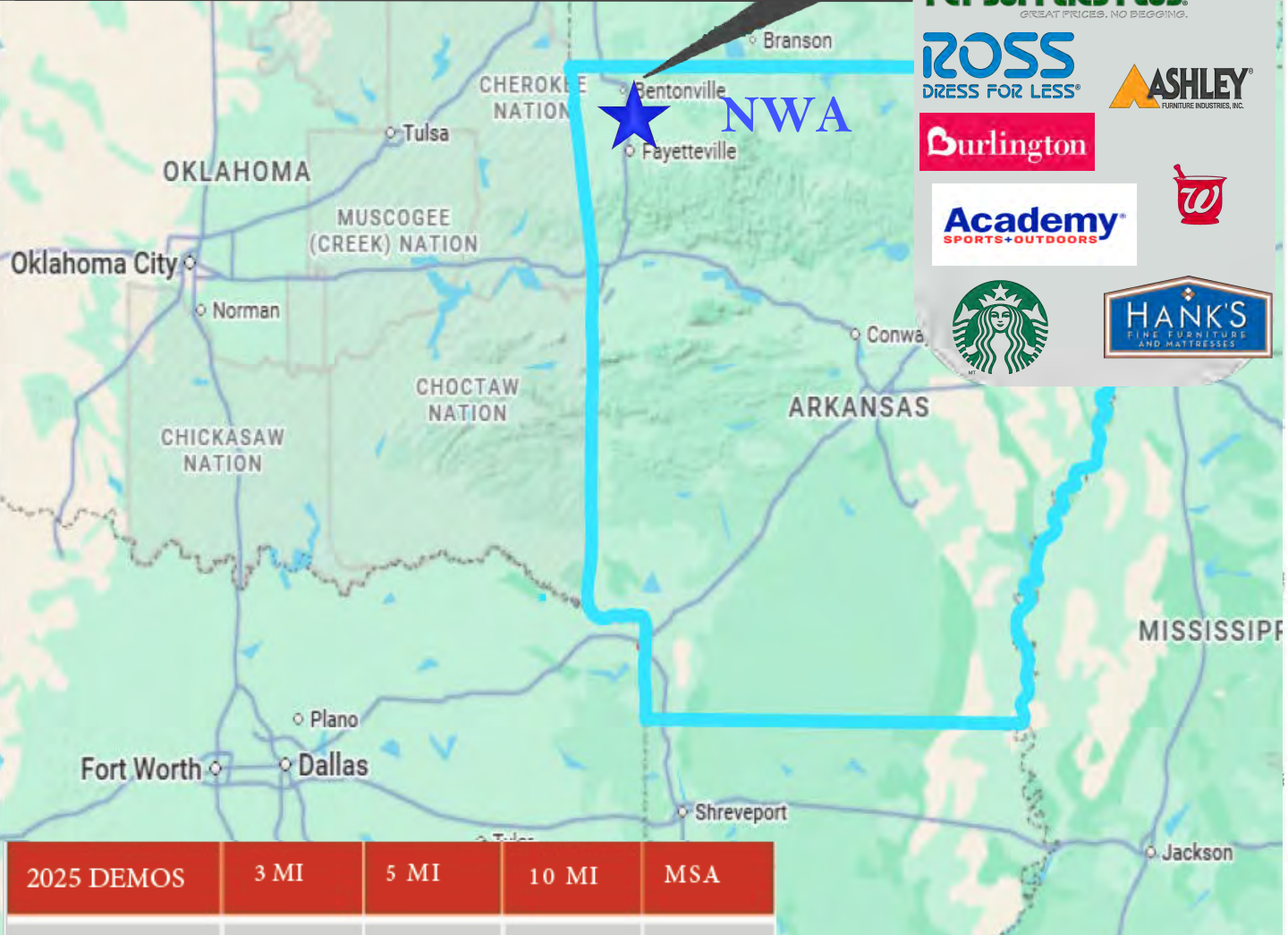
PLEASANT CROSSING COMMONS

Pleasant Crossing RD & I-49 | Rogers Arkansas

+ Highlights

- Home to the world headquarters of Walmart, Tyson Foods, J.B. Hunt Transport, Sam's Club, and Daisy BB Guns, along with many other multinational corporations and regional retailers.
- One of the fastest-growing metropolitan areas in the nation.
- Features a high-volume Walmart Supercenter.

+A thriving business community
-come join us!



2025 DEMOS	3 MI	5 MI	10 MI	MSA
POPULATION	45,055	106,491	301,345	605,615
AVE HH INCOME	\$131,742	\$124,847	\$123,293	\$97,000
HOUSEHOLDS	16,204	38,627	108,453	224,357

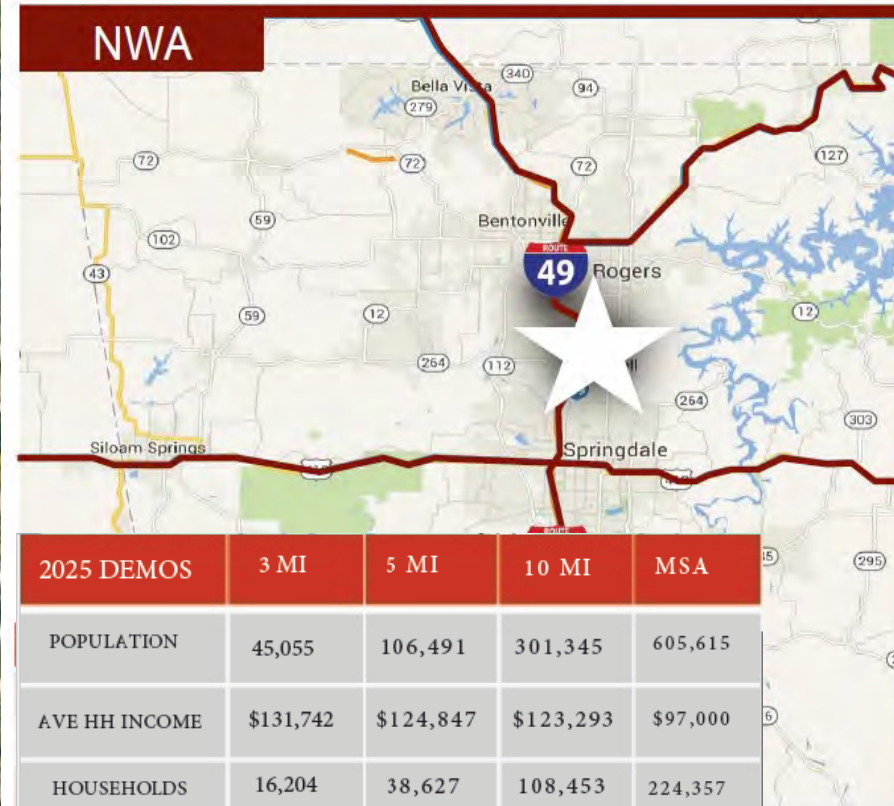


SITTON GROUP
DEVELOPMENT



LOCAL MAP

PLEASANT CROSSING RD & I-49 | ROGERS ARKANSAS



+ JOIN THE FASTEST GROWING REGION IN FOUR-STATE.

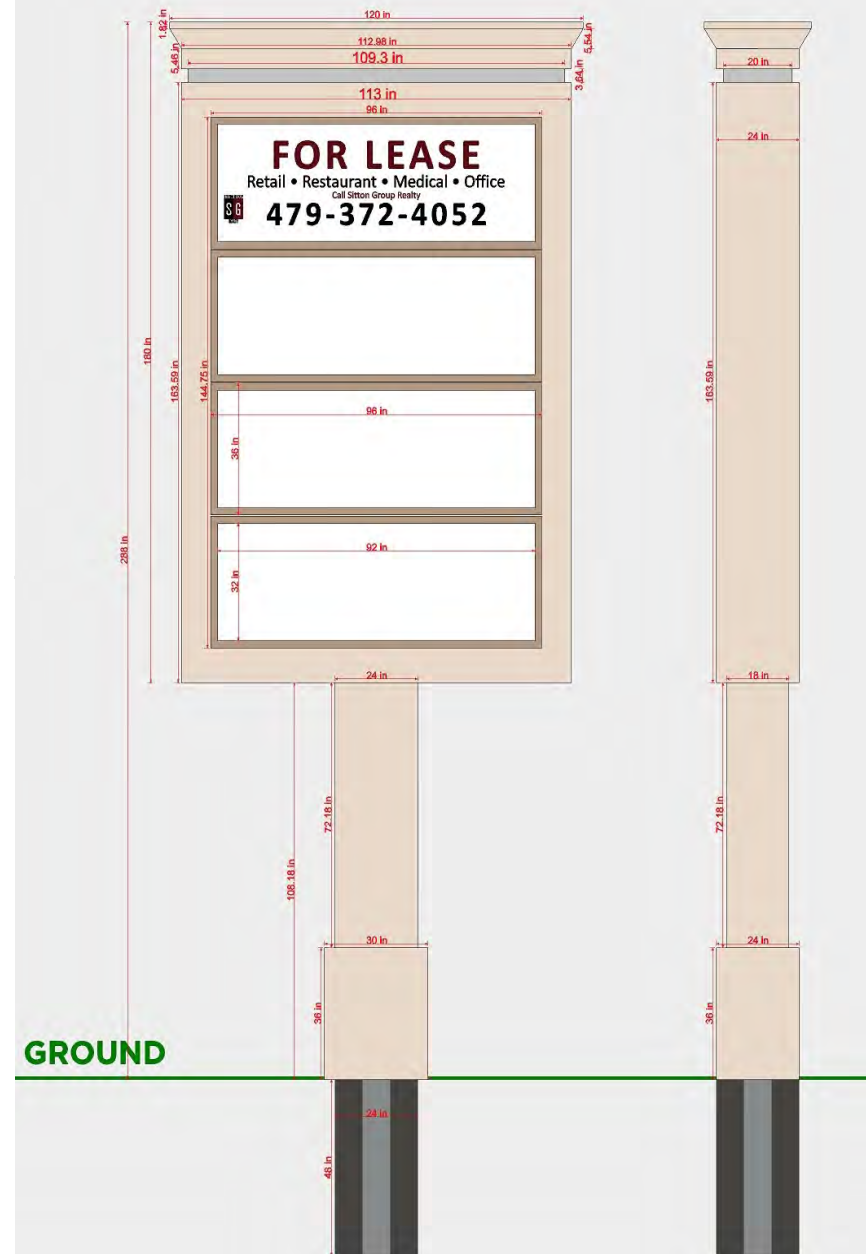
- 1 SCOTTSDALE CENTER
- 2 PINNACLE HILLS PROMENADE

3 PLEASANT CROSSING COMMONS





Pylon C



ADDRESS: S PLEASANT CROSSING BLVD
ZONED: C2-CU

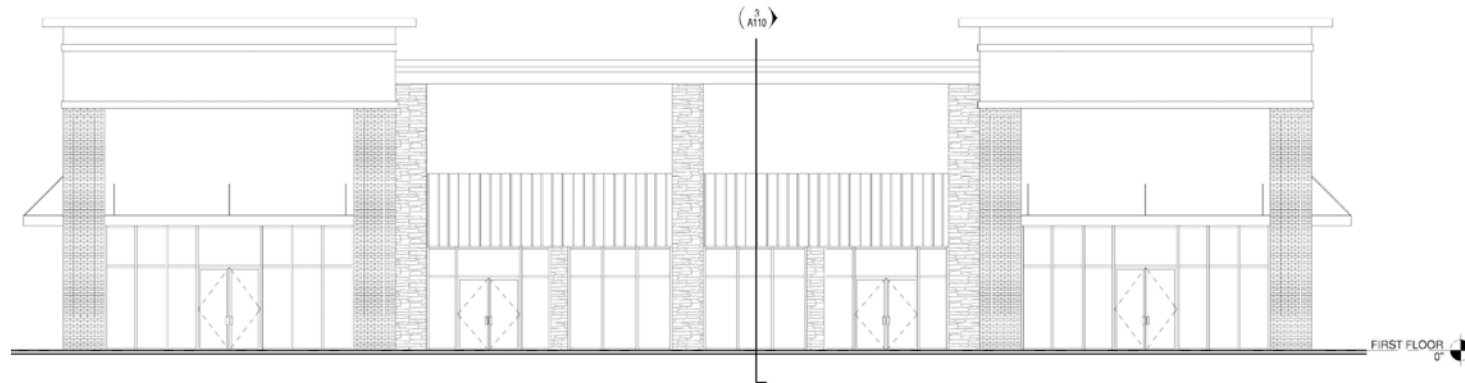


AVAILABLE
1800 to 7650
SF

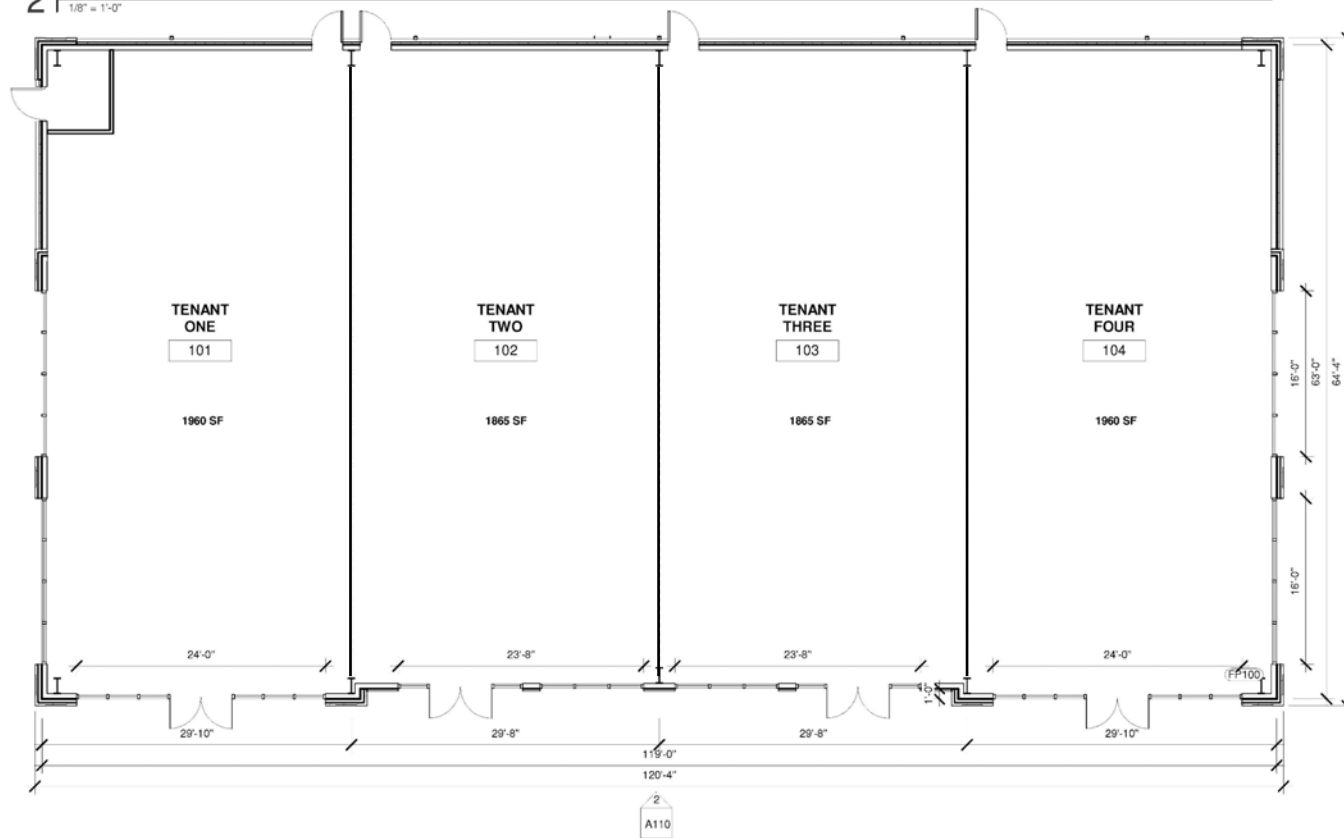


Pylon C

S PLEASANT CROSSING BLVD



2 SOUTH ELEVATION
1/8" = 1'-0"



1 FIRST FLOOR PLAN
1/8" = 1'-0"

