



You, Too, Can Keep Southfield Beautiful!

The beauty and charm of our neighborhoods are among Southfield's most precious assets. We can all do our part to keep Southfield a wonderful place in which to live and work. By keeping your house or business maintained, frequently painted and nicely landscaped, you not only display your pride in the community, but also add to the property values of the entire area.

Working together, we can help to keep Southfield beautiful. By adhering to City ordinances and community appearance standards, we can avoid common property maintenance problems. Among the most important property rules are:

- Weeds and grass must be cut on a regular basis.
- Unlicensed or inoperable vehicles may not be parked outside of the garage.
- Outside storage is not permitted, except in industrial zones. "Outside storage" constitutes anything placed outside that is not in immediate use.
- Outside storage of recreational vehicles, snowmobiles, boats, travel trailers and mobile homes exceeding 20 feet in length, is not permitted and must be stored offsite. Recreational vehicles, boats and travel trailers, **less than 20 feet in length** may be stored in the backyard only.
- Buildings must be maintained according to code regulations, including painting, repair of roofs, cracked or broken glass, fallen gutters and other maintenance items.
- Repairing of vehicles (cars, trucks, etc.) is not permitted on residential property.
- Operation of businesses in residential areas is not permitted.
- Snow must be cleared from sidewalks in front of homes and businesses as soon as possible after a snowfall.

By working together, we can all help to keep Southfield beautiful!

For more information, contact the City's Code Enforcement Division, 796-4140

REQUIREMENTS FOR REFUSE DISPOSAL

1. Place containers and bundles at the curb or at the roadside edge of the shoulder of the roadway, separate from yard waste and recyclables, not earlier than 4:00 p.m. the day before collection day or by 7:00 a.m. the day of pick-up. The empty containers must be removed from the street no later than noon the day after collection.
2. The weight limit for each container or plastic bag must not exceed 60 lbs. All trash placed at the curb has to be limited to a size and weight that a single person can manage.
3. Garbage must be kept in rigid, lead-proof containers of either plastic or metal, up to 32-gallon capacity with tight fitting covers; or in up to 32-gallon capacity garbage bags which are securely fastened.
4. Tree branches, 2 to 8 inches in diameter and brush may be placed at the curb with your regular rubbish spring through fall. (Contact Public Works (248) 796-4860 for start and ending dates of yard waste pickup.) The branches should be placed at the curb with the cut ends facing toward the curb. Bushes and root balls must be clean and without dirt.
5. Yard waste (grass clippings, weeds, etc.) must be placed in up to 32-gallon paper bags and separated from the regular trash. Yard waste in plastic bags will not be collected. (The City of Southfield recommends grass cycling (leaving clippings on lawns), mulching and composting.)
6. Bulk items (furniture, appliances, etc.) must be placed at the curb no later than 7:00 a.m. the day of pick up. Carpeting must be no longer than 4 ft., tied and bundled and not weigh more than 60 lbs.
7. Put recyclables in your recycle bin and place at the curb on your regular refuse pick up day. Call the Recycling Authority at (248) 208-2270 for recycling details.
8. Building materials including: aluminum siding, shingles, concrete, doors, windows, drywall and plaster are limited to two containers of no more than 60 lbs. each. (siding may be bundled in lengths up to 4 ft. and doors and windows cannot exceed 60 lbs. or 3 ft. by 4 ft. whichever is less)
9. Landscaping materials including dirt, soil, stone, gravel, chipped marble, and brick are limited to two containers of no more than 60 lbs. each. Cut fence and fence posts cannot exceed 60 lbs. and 3 ft. by 4 ft. whichever is less. Cut railroad ties cannot exceed 60 lbs. and 4 ft. whichever is less.
10. Cleaning fluids, paint thinner, turpentine, tires, logs, stumps, commercial waste, kitchen cabinets are not accepted. Large volume items such as kitchen cabinets, fences and large quantities of building materials, landscape supplies and large, commercial appliances require the resident to contract with the rubbish collection contractor or other independent contractor.

HOLIDAY SCHEDULE

Rubbish pick up will be delayed one day following major holidays. Those holidays are New Year's Day, Memorial Day, 4th of July, Labor Day, Thanksgiving Day and Christmas Day.

For questions about your pickup, contact the Department of Public Works at (248) 796-4860 or the City's contractor Rizzo Environmental Services at (866) 772-8900.

RRRASOC FREE DROP OFF RECYCLING SITES

Open to RRRASOC Member Communities: Farmington, Farmington Hills, Milford, Milford Township, Novi, South Lyon, Southfield, Walled Lake, Wixom



Paper Drink Cartons



File folders, office paper & gift wrapping paper

#1-#2 and #4-#7 Plastic containers (no Styrofoam)



Aluminum & Metal Cans

Newspapers, Magazines, Brochures & Inserts



Paperboard boxes (cereal, pasta, & tissue)

Corrugated cardboard & Paper bags



Household scrap metal

NO NEED TO REMOVE:

Paper clips, stamps, address labels, staples, metal fasteners, cellophane address windows, rubber bands, spiral bindings, plastic tabs

For all cardboard boxes, please flatten and cut down to 2' x 2' pieces. Empty and rinse all containers.

WONDERING IF SOMETHING CAN BE RECYCLED?

Visit www.rrrasoc.org

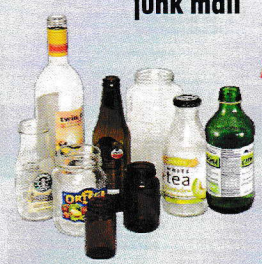
Call us at 248-208-2270

Download the "Recycling Authority" mobile app for iPhone and Android



Phonebooks

Greeting cards, regular & junk mail



Glass bottles & jars (all colors)



Bulky Rigid Plastic (buckets, chairs, toys)

NO

- Plastic Bags
- Styrofoam containers
- Wire hangers
- Window panes, mirrors, ceramics & Pyrex dishware
- Organic material and food waste
- Electronic waste (batteries, cell phones, computers, etc.)
- Paint, pesticides, oil & cleaners
- Waxed cardboard
- Needles or syringes
- Hazardous waste

RECYCLING DROP-OFF LOCATIONS:
SOUTHFIELD: 20000 W. 8 Mile Road
NOVI: 26300 Lee Begole Drive
OPEN DURING DAYLIGHT HOURS
7 DAYS A WEEK



Keep Southfield Beautiful!

Every resident and business owner has a vested interest in maintaining property values by keeping Southfield clean and attractive. The City of Southfield is committed to working with residents and businesses to keep Southfield beautiful. Let's each do our part to recycle, maintain our homes and neighborhoods, and keep Southfield and the environment clean, green and beautiful!

Are you aware that most items, if prepared properly, may be placed at the curb for disposal on your regularly scheduled rubbish collection day? This brochure outlines everything you need to know to ensure that everything you put at the curb gets collected.

For more information, contact Southfield Public Works at (248) 796-4860, or visit www.cityofsouthfield.com.



Please recycle to keep Southfield and the environment clean and green!

Rubbish collection guidelines apply only to refuse generated by single-family homes. Commercial or excessive amounts of any material(s) may require a special pickup at the homeowner's expense.

SPECIAL CITY HOTLINE:

(248) 796-EYES

Every Southfield resident can do their part to keep our community clean and attractive. If you see a potential blight or code issue, call the City's special hotline at (248) 796-EYES (3937) to report it.

Together, we can keep Southfield beautiful!

City of Southfield
Department of Public Works
P.O. Box 2055 • 26000 Evergreen Rd.
Southfield, MI 48037-2055
(248) 796-4860
www.cityofsouthfield.com

Southfield
the center of it all™

CITY OF SOUTHFIELD

Rubbish Collection Guidelines

Public Works Department
(248) 796-4860

Southfield
the center of it all™

Do Your Part to Keep Southfield Beautiful!

CITY OF SOUTHFIELD WEEKLY RUBBISH COLLECTION GUIDELINES

Items accepted for weekly curbside collection

| Rubbish | Preparation | Limit |
|---|--|-------------------------------------|
| Aluminum siding | Not to exceed 60 lbs. and cut to 4 ft. lengths | Two containers, or tied and bundled |
| Carpeting | Cut into 4 ft. lengths, tied and bundled, not to exceed 60 lbs. | None |
| Concrete | Not to exceed 60 lbs. and placed in a 32 gal. container | Two containers |
| Dirt, soil, stone, gravel, clay, chipped marble and brick | Not to exceed 60 lbs. and placed in a 32 gal. container | Two containers |
| Doors and windows | Not to exceed 60 lbs. or 3 ft. X 4 ft. | Two doors or windows |
| Drywall and plaster | Not to exceed 60 lbs. and placed in a 32 gal. container | Two containers |
| Fences or fence posts | Cut, not to exceed 60 lbs. max, or 3 ft. X 4 ft., whichever is less | Fence repair, NOT replacement |
| Railroad ties | Cut, not to exceed 60 lbs. max or 4 ft., whichever is less | Two railroad ties |
| Root ball, bush | Clean, without dirt | Two root balls or bushes |
| Shingles | Not to exceed 60 lbs. and placed in a 32 gal. container | Two containers |
| Tree Trimmings | 4 ft. lengths, 2 in. diameter max, not to exceed 60 lbs. tied in bundles | None |
| Branch Removal | 2 to 8 in. diameter, no longer than 6 to 8 ft. in length, placed at road with cut end(s) to road | None |

Rules for Rubbish Collection

- Trash cannot be placed at the curb before 4 p.m. the evening prior to your scheduled collection.
- Refuse is limited to 60 pounds of material contained within a 32-gallon container or plastic bag(s).
- All containers (and recycle bins) must be removed no later than noon the day following trash collection.
- Yard waste must be placed in approved paper yard waste bags or in a rigid container clearly marked 'Yard Waste.' Yard waste in plastic bags will not be accepted. Yard waste is collected from mid-April through the end of November.
- Recyclable materials must be contained within a recycle bin and placed at the curb on your scheduled collection day. Items must be rinsed and paper must be placed inside a paper bag.
- Appliances and furniture ("white goods") **do not** require a special pickup; however, doors must be removed and items should be placed at the curb no later than 7:00 a.m. on your regular collection day.

Items NOT Accepted!

- Drywall in bulk; 2 X 4 studs in bulk; firewood; kitchen cabinets in bulk; tires; entire remodels or excessive amounts of any material(s) will not be accepted.
- All Hazardous Waste Products such as cleaning fluids, paint thinner or turpentine will not be accepted. Hazardous items should be dropped off at the Household Hazardous Waste Days.

QUESTIONS?

**CALL SOUTHFIELD PUBLIC WORKS
AT (248) 796-4860.**