

OUR LADY OF THE ASSUMPTION - ST. ANN BY THE SEA

Marshfield, Ma., April 19, 2026

3RD

SUNDAY OF EASTER

THE APPEARANCE ON THE ROAD TO EMMAUS

While he was with them at table, he took bread, said the blessing, broke it, and gave it to them. With that their eyes were opened and they recognized him.

Luke 24:30-31



Collaborative Mass Schedule

Weekends: Saturday Vigil

4:00PM St. Ann by the Sea

Sunday

7:30AM, 9:30AM—St. Ann by the Sea

8:30AM, 10:30AM, 5:30PM—Our Lady of the Assumption

Weekdays

Monday—Saturday

8:00AM @ Our Lady of the Assumption

Confessions

Saturday

OLA : 8:30AM—9:15AM

St. Ann: 2:30PM—3:15PM

Telephone.....781-834-6252

Website.....www.olarmarshfield.org

Parish Office.....Rosemary Haviland, ext. 100

Pastoral Associate.....Catherine Rein, ext. 105

Office Administration.....Claudette Berrio, ext. 102

Business Manager.....Steve Strug, ext. 104

Faith Formation Office.....781-834-3425

Elementary Faith Formation.....Tarah Valin, ext. 201

Middle School Faith Formation & Youth Ministry

.....Noah Hackendorf, ext. 202

Music DirectorEzekiel 'Zeke' Lewis, ext. 200

Pastor.....Fr. Paul Aveni, ext. 108

Parochial Vicar.....Fr. Jiwon Yoon

Permanent Deacon.....Deacon Walter Seamon

Weekend Assistant.....Fr. Gerard Petringa

Collaborative Pastoral Council Vice-Chair

Jack Hanratty - Melinda Campbell

Finance Council Chairperson

Bill Bowers

Musicians/Cantors

....Gale McCarthy, Thomas Young, OLA Organists

....Joel Davidson, Joe Kodzis, St. Ann Keyboardist

....Frank Piekut, Colleen Balboni, Christina Dimitri, Rosemary Madden

....Matthew Kimble, 5:30 PM Mass, Contemporary Musician

Adoration of the Blessed Sacrament

Friday Morning following the 8:00AM Daily Mass until 9:00AM

Baptisms

St. Ann - 1st Sunday of the Month at 11am

OLA - 2nd Sunday of the Month at 12pm

Parents/Guardians please contact the Collaborative Office as soon as possible (at least 1 month prior) to make arrangements

Marriage

Couples are asked to contact the Collaborative Office at least 6 months before your wedding to make arrangements.

Pastoral Care for the Sick

Please call the Collaborative Office to arrange for a pastoral visit or Sacramental care for the sick

New parishioners are welcomed and invited to register by calling the office or online at olarmarshfield.org

Handicapped Accessible † Air-Conditioned

MASS INTENTIONS

Saturday, April 18, 2026

8:00

4:00 For the People

Third Sunday of Easter, April 19

7:30 For our military and first responders

8:30 Doreen Meehan RIP

9:30 James Murphy RIP

10:30 John & Dorothy Cullen RIP

5:30 Paul Murphy RIP, 1st Anniversary

Monday, April 20: Patriots Day

8:00

Tuesday, April 21

8:00 Fr. Donald Clifford, RIP Birthday

Wednesday, April 22

8:00 Josephine & Alfred Cabral RIP

Thursday, April 23

8:00

Friday, April 24

8:00

Saturday, April 25

8:00

4:00 For the People

Fourth Sunday of Easter, April 26

7:30

8:30 Anne Dillon—Healing

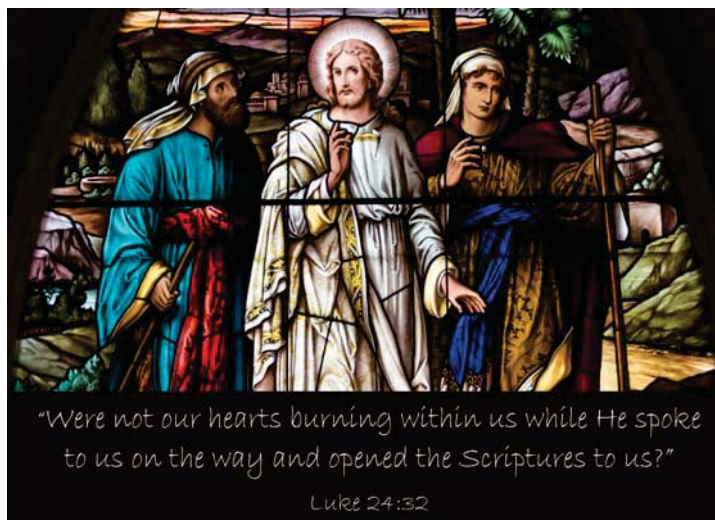
9:30 For our military & first responders

10:30 Month's Mind: James Murphy, Robert F. DeGust,
Elizabeth Mizzoni, Thomas Flynn, Helen Palmieri

5:30 Edward H. Russell RIP

(Red) St. Ann by the Sea Church

(Blue) Our Lady of the Assumption Church



Weekly Offertory— April 12, 2026

OLA: \$4153. O/L: \$2748. Total: \$6901.
SAS: \$5807. O/L: \$1095. Total: \$6902.

Thank you for your generous support.



OLA - ONLINE GIVING

Click on the Online Giving picture to go directly to the online giving webpage, or visit <https://www.osvhub.com/olamarshfiel>.



ST. ANN - ONLINE GIVING

Click on the Online Giving picture or go directly to the online webpage or visit [Sign In / OSV Hub](#)



Just Like the disciples on the way to Emmaus, we too don't always recognize Jesus either.

CORI FORMS... All Volunteers!

The Commonwealth of Massachusetts requires all volunteers at OLA to fill out an annual CORI Form covering the year July 2025 through June 2026. All volunteers should be filling out their form. Please take a moment and fill yours out. You may come to the office and fill it out, take one from the sacristy and have Father sign to verify, or call and we will mail one to you. Thank you !

Please check the sacristy to see if there is a form with your name. Please!

The Church Offices will be closed on Monday, April 20th in observance of Patriots Day.



REST IN PEACE...

Remember in your prayers the soul of Martin Conley, and Rose O'Brien, whose funerals took place this past week.

*"No eye has seen, nor ear heard,
Nor heart conceived, what the Lord has prepared for those who love Him."*



"And behold, I am with you always, even to the end of the age."

Please leave cellphones in your car, out of reverence for Mass. Thank you.



Blessings and Gratitude to Deb Conlon as she Retires

On Thursday, April 9, 2026, Our Lady of the Assumption and Saint Ann by the Sea parishes bid farewell and thank you to Deb Conlon as she retired from working to enjoy her family.

Deb has served as the Operations and Project Manager of our parishes, since we came together in July of 2023. With her background in project management in Verizon going back to the time of New England Telephone, Deb has been instrumental in streamlining and organizing the staff, systems and procedures of our two parishes, to efficiently use our combined resources. I appreciate her professional gifts, her friendship and most importantly her strong faith that she brought to her work with us. Deb and her family remain in Marshfield and in our collaborative of parishes while they prepare to setup their new home in a warmer climate.

Thank you, Deb, for your years of service!!!!

You will learn more from your friends than you ever will from books. Choose your friends wisely and make Jesus the first.

Our friends have a tremendous influence on the people we become. It's not that God is not speaking... The problem is ... we are not listening. Sit with the Lord and say... these are the circumstances... What do you think I should do?

Explain the problem as clearly and completely as you can... and then listen... Yes, listen. Follow the inspirations of your prayer.

Peace is the proof that God is present in your plans. Tell him about your plans, your dreams, your friends and family, travels and anything that is weighing on your heart and mind.

Ask Him to point out your mistakes and faults. Most important—speak about decisions you need to make.

End with a resolution, ask for strength and grace to live it. Check in all day long. Prayer is about living in the Presence of the Lord.

Recognize "God is With Us" before we begin each task. Our lives become one continuous road to Emmaus.

Ten minutes a day in prayer can change your life more radically than you could ever imagine.

Together We Are One



Thank you to all who have already donated to the 2026 Catholic Appeal.

To date St. Ann has reached 83% of their goal, (\$28,697.76) taking in \$25,875 from 108 donors.

Our Lady of the Assumption has reached 65% of their goal, (27,838.44) taking in \$20,7882 from 103 donors.

To make an online pledge, please visit www.bostoncatholicappeal.org



Thank you for your support!

The **Roses For Life Mother's Day Drive** will take place on May 3rd this year. Roses are handed out to parishioners for a small donation. We are seeking volunteers for each Mass to help out! If interested, please call the Church Office. *For your life-giving donation to the MCFL Rose Drive... THANK YOU!*



APRIL IS CHILD ABUSE PREVENTION MONTH

Since formal programs have been available to the Archdiocese, Our Lady of the Assumption has been implementing child safety programs for adults and children.

All volunteers in the parish must submit an annual CORI form.

All adults who work with children participate in a 3 hour workshop on keeping children safe.

Each year safety lessons for children in grades K-8 are incorporated into their Religious Ed. Curriculum.

Resources for parents are available to be borrowed from the Religious Education Office.

For more information on any of the above, contact the Church Office or the Faith Formation Office.



SURVIVING LOSS ~ A JOURNEY TO HEALING

Have you had a loss such as, the loss of a spouse, a parent, a family member, a friend, a child, a job, financial loss, health challenges? You are invited to come for sharing and healing in a prayerful small group setting at Our Lady of Assumption, Meetings held once monthly on Wednesday's from 1-2pm at OLA's parish hall. They meet on the first Wednesday of every month. **Next meeting is May 6th.**

Facilitators of the group are Catherine Rein (rein@olamarshfield.org) and Pamela Hulme (pamhulme@hotmail.com) for questions.

Choir Rehearsals take place on Tuesday evenings from 630-8pm at St. Ann by the Sea. The choir sings at the 9:30 Mass at St. Ann.

Bring a friend !



"We are the Easter people and Alleluia is our Song."

Pope John Paul II

WHAT: St. Joseph Men's Group

WHO: All men ages 18+

WHEN: Weekly meetings 6:30-7:30p.m. Tues.

WHERE: St. Ann's Parish Hall

WHY: We are a brotherhood committed to modeling our lives after the great Saint Joseph. Sign up by emailing info@olamarshfield.org or join us.

Save the Date....

Vacation Bible School

July 13th-17th

9am-12pm each day

Volunteers needed, email Tarah Valin.



SAVE THE DATE...

CRAFT FAIR July 11th, from 9-2pm.

St. Ann Parish Hall

Contact: Catherine Rein at rein@OLAMarshfield.org for more info or to request a space at the Fair!

You have no idea how important you are, Christian.

"God has entrusted the best news ever to you. Through your words and your actions he's counting on you to share it with the world."

Real Life Catholic

Rosary in the Park - Saturday, May 9th at noon, Marshfield Police Station



SMALL GROUPS MEETING- OLA

" Women at the Well", facilitated by Pam Hulme, Scripture and Faith sharing groups.

"Donuts with Jesus"

facilitated by Deacon Walter Seamon, meets April 25th, following the 8am Mass.

New members welcome...

Marshfield Food Pantry: You may bring your donations/or receive aid at the Food Pantry at Library Plaza on Tuesdays and Fridays from 10am to 12 noon and Weds. evening from 6:30 to 8:30pm.

Monetary donations may be sent to PO Box 1097, Marshfield, MA. 02050. Thank you!

Our Churches continue to accept non-perishable items at the doors of the church.



Sowing Seeds is in need of spring/summer clothing for children and adults. Underwear is needed in all sizes, along with socks. Open for Take-In or Drop-Off: Thursday & Saturday, 10-12noon. Located on corner of Rte. 139 and School Street. Open to all Marshfield residents.

For more information, please call 781-837-3337.



Journey OF Faith

3RD SUNDAY OF EASTER

HE WAS MADE
KNOWN TO THEM
IN THE BREAKING
OF THE

Bread

LUKE 24:35

In Word & Deed

The experience of the disciples on the road to Emmaus differs from that of Thomas.

He had spent time alone, away from the Apostles and found himself doubting the Resurrection of Jesus. The disciples spent time together, discussing the events of the day as they struggled to understand what had happened. When Jesus joins them, they are open and willing to hear His words and are led to a deeper faith.

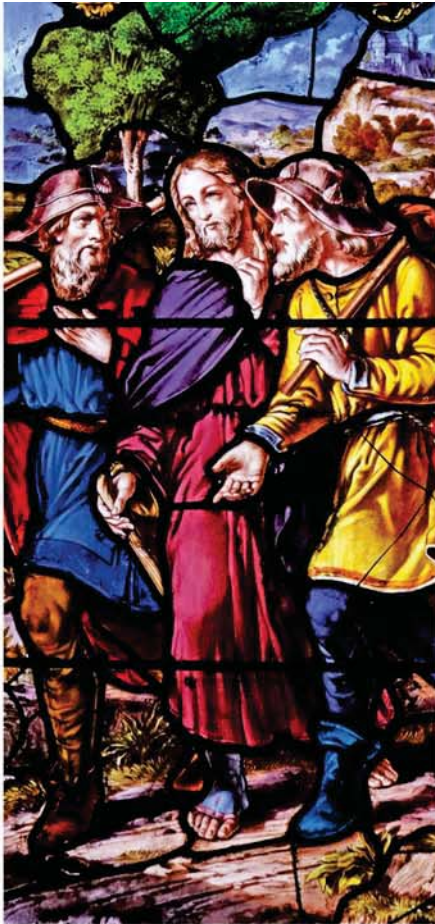
Jesus once said that where two or three are gathered in His Name, He is present with them. His Presence leads them to trust and faith as they share their experiences and insights into God's grace and work in their lives. Faith is strengthened when the Church, the Body of Christ, is called together.

(continued on back)

Father Fields *your questions* by Father Jim Field

Q. *Why does Easter keep going on and on?
The lilies are looking pretty tired at my church!*

(continued on back)



FAMILY LIFE:

TO WALK AS ONE



Doubt is part of life. We often question things, wondering how accurate our perception is, or whether something is true, or if we made the right choice or decision. As the old saying goes, nothing in life is certain except taxes and death.

Even the most religious person has questions about faith. It is almost inevitable. The mysteries of God are so profound that our minds wonder how and why God acts the way He does. Pondering the idea of infinity, or eternity, or creation or the complexity of life, any thinking mind wonders how it is all possible. Try as we may, there are no easy explanations or simple ways to explain. Many saints

have prayed to God, asking for wisdom and knowledge to understand His ways and be strengthened in faith.

Doubt is a normal part of faith. When our minds cannot explain something, we wonder if it is real and knowable. Sometimes other will offer good explanations. Scripture is full of stories of holy men and women who wanted to know more. Like Thomas, we need the help and support of others to deepen our knowledge and understanding of faith.

-Jim Gaffney

Father Fields *your questions*

(continued from front)

As long as your “alleluias” are ringing out loud and clear, don’t worry. It’s not about the lilies – and by now maybe they can be replanted out in the parish garden so they can bloom again in late summer. Easter began as a single day, the Pasch, which later grew into three days, the Triduum. It took a few centuries for forty days to be tacked on before it, and fifty days behind it. But, technically, the fifty days of Easter are looked upon as one great day that rolls on and on. It just has fifty sunrises and fifty sunsets - on the liturgical calendar it is treated as one great day of the Lord. The fifty days have their roots in the fifty days between Jewish Passover and the great feast of Pentecost, and that fits well with the way Luke describes the encounters of the Risen Lord with the disciples. For forty days they experienced his presence in a profoundly intimate way, for ten days they had to deal with his leaving, and then at Pentecost a rush

of insight erupted into the church that Jesus’s promise of “I will be with you always” could be trusted. It is often true, though, that the parish works so hard to prepare and celebrate the Triduum that it’s hard to pump much Easter energy into the next seven weeks. It’s also true that in the United States, we’re very good at preparing for holidays, but we’re not so good at extending the celebration. Christmas is packed away very quickly, and Easter evaporates even faster at the mall and elsewhere. Yet, there are ways of extending Easter joy. One of the great works of the season is called “mystagogy,” which means “reflection on the mysteries.” We help the newly baptized assimilate their new life, and so we can take plenty of time to celebrate what God has done for us in Christ. It’s not about the lilies – you’re the one who’s going to live forever!!

In Word & Deed

(continued from front)

We sometimes are critical of our local parish. People may not always get along, and some might be more difficult to get along with than others. But it is our community; each person is there to witness to God’s love and grace in their life. There is much to be learned, and discussed and experienced together. In that parish, in that person and in our life, the Lord dwells. Recognize and know Him.

-Jim Gaffney

Jacuzzi | Bath Remodel

**Safety. Style.
Stress-Free
Installation.**

CALL NOW 1.833.791.9968

SPECIAL OFFER

**Waiving All
Installation
Costs!**

Add'l terms apply. Offer subject to change and vary by dealer.
Expires 12/27/26.






**RENEWAL
by ANDERSEN**
FULL-SERVICE WINDOW & DOOR REPLACEMENT

**BUY 1, GET 1
40% OFF***

PLUS

**\$200 OFF
Your Entire Purchase***

MINIMUM PURCHASE OF 4

OFFER ENDS JUNE 30

TOLL FREE 866-931-0908



**Albuquerque
Balloon Fiesta &
Southwestern Tour**

**10 DAYS STARTING AT
\$2,749 ~~\$2,499*~~**

BASED ON SEP 25, 2026
DEPARTURE

MUST BOOK BY 6/30

CALL US: 1-844-958-3699

*Per person based on double occupancy & includes tax service/gov't fees. Ask your Travel Consultant for terms & conditions. Add-on airfare with transfers available for most major gateways.

"God is Love" 1 John 4:8

A Program That Can Change Your Marriage

Every Marriage Goes Through Seasons.
If your marriage needs renewal —our program can help.

During the initial weekend phase you will:

- Learn a powerful communication method
- Share honestly in a safe and private environment
- Rediscover hope for your relationship



This is not group therapy and you will never be asked to share publicly.
Thousands of couples have found healing through this 4 phase program.

Your Marriage is Worth Fighting For.

MarriageHelpNewEngland.org
Text or Call 508-271-7155




MacDonald Funeral & Cremation Care Services

Proud to be Family Owned and Operated

1755 Ocean Street, P.O. Box 84 Marshfield, MA 02050

(781) 834-7320

Funeral Directors

Mark W. CFSP • Steven P. • Robert E.

PRE-NEED COUNSELING & PLANNING

Family Owned and Operated Est. 1984



Custom Screen Printing & Embroidery

sales@rocklandathletics.com
781-878-6481
www.rocklandathletics.com

AD SPACE AVAILABLE

617-779-3771

Galvin & Galvin, PC

Attorneys and Counselors at Law

EXPERIENCED, INVESTED & RELIABLE ADVICE

- Real Estate
- Municipal & Zoning Law
- Estates, Wills & Trusts
- Divorce & Family Matters
- Corporate & Business Law
- Landlord & Tenant Law
- Personal Injury Law
- Criminal & Civil Litigation

Robert W. Galvin, Esq.

Robert E. Galvin, Esq. 1931-2020

10 Enterprise Street Suite 3, Duxbury, MA 02332

Tel: (781) 934-5678 / (781) 834-4224

Facsimile: (781) 837-1030

BEFORE YOU RENEW, LET US REVIEW

We'll check your current policy and see if you're overpaying - at no cost to you.

Local. Independent. On Your Side.

CONTACT US
(781) 857-1941
www.abcctcinsurance.com

GLOBAL GREEN LAWN CARE INC.

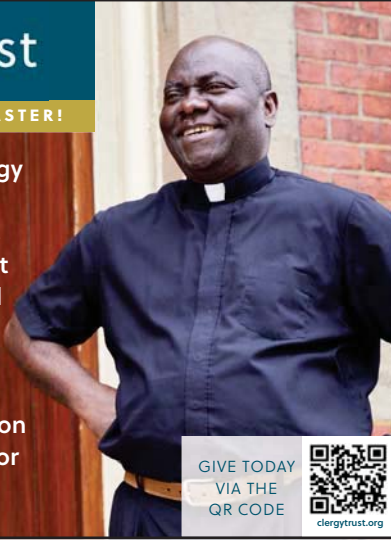
781-886-7068
www.globalgreenlawn.com



SUPPORT OUR PRIESTS THIS EASTER!

Your support for the Clergy Trust parish collections provides for the health, wellness, and retirement needs of our active and senior priests.

Thank you for your generosity to this collection and for helping us care for those who care for us.



GIVE TODAY VIA THE QR CODE



clergytrust.org

AD SPACE AVAILABLE

617-779-3771

TOP AUTO & TRUCK

2054 Ocean Street, Marshfield, MA

- Diagnostics
- Routine Maintenance
- Engine & Transmission Repairs
- Brake Services

Your Top Choice for Precision and Performance
Call 781-400-0292
cell 978-335-1850
www.topautoandrepair.com

"He has risen." Matt 28:6



Up the Gutter
Roofing & Gutters

781-204-1248
www.upthegutter.com

"God is Love" 1 John 4:8

LUMBERJACKS & SONS
TREE & LANDSCAPE

781-834-7977

Green Harbor General Store
Coldest Beer on the Planet & Famous Chicken Salad!

"The Genny" Your Neighborhood Country Store!

Open 7 Days a week!

Mon-Thurs 6:30am-8pm
Fri & Sat 6:30am-9pm, Sun 7am-8pm

Friendly service and more...

40 Marginal St, Marshfield • 781-837-3995
www.greenharbargeneralstore.com

AD SPACE AVAILABLE

617-779-3771

PRIME ROOFING

IS YOUR ROOF PREPARED FOR THIS WINTER?

- SCHEDULE AN ESTIMATE WITH US:
- 10 Year Labor Warranty
 - Shingles That Will Last You a Lifetime
 - \$1000 OFF a Complete Roofing Job

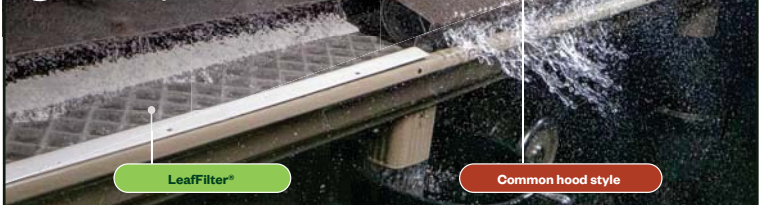
781-561-5361
primeroofingma.com

Jaquies's Cleaning Service

10 Years Experience
Weekly & Biweekly
Move-Ins / Move Outs

774-327-5603

Tested and proven gutter protection.



LeafFilter®

Common hood style

We install year-round - Exp. 6/30/26

Schedule your **free** inspection and estimate today!
1-844-320-4506 Promo Code: 285

Special offer - Save up to*

25% off
LeafFilter Gutter Protection

*Promotional offer includes 15% off plus an additional 10% off for qualified veterans and/or seniors. Cannot be combined with any other offers. One coupon per household. No obligation estimate valid for 1 year. See representative for full warranty details. AR 366920925, AZ ROC 344027, CA 1035795, CT HIC0671520, DC 420223E+11, FL CBC056678, IA C127230, ID ROE-51604, LA 559544, MA 213292, MD MHIC11225, HIC164488, MI 262300331, 262300330, 262300329, 262300328, 262300318, 262300173, MN IR1810524, MT 2661922, ND 47304, NE 50145-24, 50145-23, NJ 13VH13285000, NM 408693, NV 86990, OR 218294, PA PA179643, RI GC-41354, TN 10981, UT 10783658-5501, VA 2705169445, VT 1740000871, WA LEAFLLH-763PG, WI No. 537-DCFRR WV WV056912.






**BUY 1, GET 1
40% OFF***

PLUS

\$200 OFF
Your Entire Purchase*

MINIMUM PURCHASE OF 4

OFFER ENDS JUNE 30

TOLL FREE 866-931-0908

A Program That Can Change Your Marriage

Every Marriage Goes Through Seasons.
If your marriage needs renewal —our program can help.

During the initial weekend phase you will:

- Learn a powerful communication method
- Share honestly in a safe and private environment
- Rediscover hope for your relationship



This is not group therapy and you will never be asked to share publicly.
Thousands of couples have found healing through this 4 phase program.

Your Marriage is Worth Fighting For.

MarriageHelpNewEngland.org
Text or Call 508-271-7155





Albuquerque Balloon Fiesta & Southwestern Tour

10 DAYS STARTING AT \$2,749 \$2,499*

MUST BOOK BY 6/30

BASED ON SEP 25, 2026 DEPARTURE

CALL US: 1-844-958-3699

*Per person based on double occupancy & includes tax service/gov't fees. Ask your Travel Consultant for terms & conditions. Add-on airfare with transfers available for most major gateways.

"He has risen." Matt 28:6



inogen

Portable Oxygen Concentrators

Leave the tanks at home and convert the air around you into medical-grade oxygen.

CALL US NOW AT 1-888-485-5350

SM250015_EN_EX_USA | Rx Only. © 2024 Inogen, Inc. 859 Ward Drive, Suite 200, Goleta, CA 93111 Inogen® is a trademark of Inogen, Inc. The usage of any Inogen, Inc. trademark is strictly forbidden without the prior consent of Inogen, Inc. All other trademarks are trademarks of their respective owners or holders.



Discover the Beauty & Durability of PuroStone



CALL NOW (844) 300-2419

\$1500 OFF*
PLUS
ZERO Interest,
ZERO Payments
Financing for 12 Months**

Military & Senior Discounts Available

*Includes labor and product; bathtub, shower or walk-in tub and wall surround. This promotion cannot be combined with any other offer. Other restrictions may apply. This offer expires 6/30/2026. Each dealership is independently owned and operated. **Third party financing is available for those customers who qualify/Participating dealers only. See your dealer for details. ©2026 Bath Concepts Industries, LLC.

Veronica's Sweetcakes
Cakes for all Occasions

1849 Ocean St.
Marshfield, MA
781-834-7470



Memorial Ads
Available

617-779-3771



Catholic Cruises and Tours

Take your
**FAITH ON A
JOURNEY**

Catholic Cruises and Tours
and The Apostleship of The Sea
of the United States of America
Catholic Cruises and Tours
to Worldwide Destinations



Call us today at 860-399-1785 or email
Janet@CatholicCruisesandTours.com
www.CatholicCruisesandTours.com

Since 2015



We've been providing top-tier tree removal and
pruning services with safety, cutting-edge
technology, and 24/7 emergency support

781-640-0377 • Stoughton, MA
www.walnuttreeservice.com/contact-us



tinnyandsons.com
781.826.6163

575 Washington Street Pembroke, MA 02359

Galvin & Galvin, PC

Attorneys and Counselors at Law
EXPERIENCED, INVESTED & RELIABLE ADVICE

- Real Estate
- Municipal & Zoning Law
- Estates, Wills & Trusts
- Divorce & Family Matters
- Corporate & Business Law
- Landlord & Tenant Law
- Personal Injury Law
- Criminal & Civil Litigation

Robert W. Galvin, Esq. 10 Enterprise Street Suite 3, Duxbury, MA 02332
Robert E. Galvin, Esq. 1931-2020 Tel: (781) 934-5678 / (781) 834-4224
Facsimile: (781) 837-1030

**AD SPACE
AVAILABLE**
617-779-3771

**Better Shelves.
Custom Solutions.**

Say goodbye to clutter and frustration—wherever it lives.
From kitchens and pantries to bathrooms and laundry rooms,
ShelfGenie® custom pull-out shelves bring smart, accessible
storage to every space in your home.

FREE EXPERT
DESIGN CONSULTATION

A **\$250** VALUE

ShelfGenie®
EVERYTHING WITHIN REACH™
a neighborly company



Schedule Now by Calling
1-855-625-9032



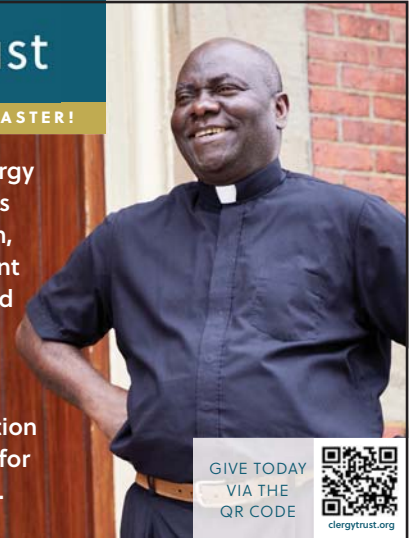
© 2025 ShelfGenie SPC LLC. All rights reserved. Locally owned and operated franchise. Offer valid at participating locations only. Limit one offer per household. *Applies to Classic and Designer line. EXP 3/30/2026.



SUPPORT OUR PRIESTS THIS EASTER!

Your support for the Clergy
Trust parish collections
provides for the health,
wellness, and retirement
needs of our active and
senior priests.

Thank you for your
generosity to this collection
and for helping us care for
those who care for us.

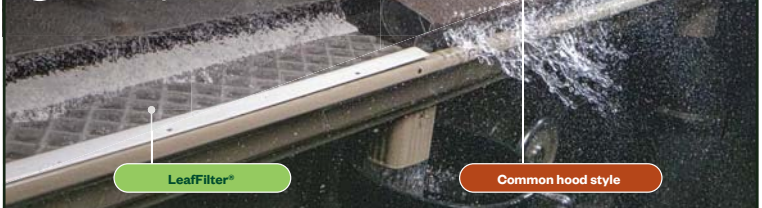


GIVE TODAY
VIA THE
QR CODE



clergytrust.org

Tested and proven
gutter protection.



We install year-round - Exp: 6/30/26

Schedule your **free** inspection and estimate today!
1-844-320-4506 Promo Code: 285

Special offer—Save up to*

25% off
LeafFilter Gutter Protection

*Promotional offer includes 15% off plus an additional 10% off for qualified veterans and/or seniors. Cannot be combined with any other offers. One coupon per household. No obligation estimate valid for 1 year. See representative for full warranty details. AR 366920925, AZ ROC 344027, CA 1035795, CT HIC0671520, DC 4.20223E+11, FL CBC056678, IA C127230, ID ROE-51604, LA 559544, MA 213292, MD MHIC11225, HIC164488, MI 262300331, 262300330, 262300329, 262300328, 262300318, 262300173, MN IR810524, MT 2661922, ND 47304, NE 50145-24, 50145-23, NJ 13VH3285000, NM 408693, NV 86990, OR 218294, PA PA179643, RI GC-41354, TN 10981, UT 10783658-5501, VA 2705169445, VT 174.0000871, WA LEAFFLH-763PG, WI No. 537-DCFRR WV WVO56912.

"God is Love" 1 John 4:8



GARAGE FLOORING & ORGANIZATION
BostonGarage.com

**MacDonald Funeral & Cremation
Care Services**

Proud to be Family Owned and Operated

1755 Ocean Street, P.O. Box 84 Marshfield, MA 02050

(781) 834-7320

Funeral Directors

Mark W. CFSP • Steven P. • Robert E.

PRE-NEED COUNSELING & PLANNING

