

 3DMAKERPRO

*Metreo*  
*a better solution*

*www.metreo.solutions*

# Raven

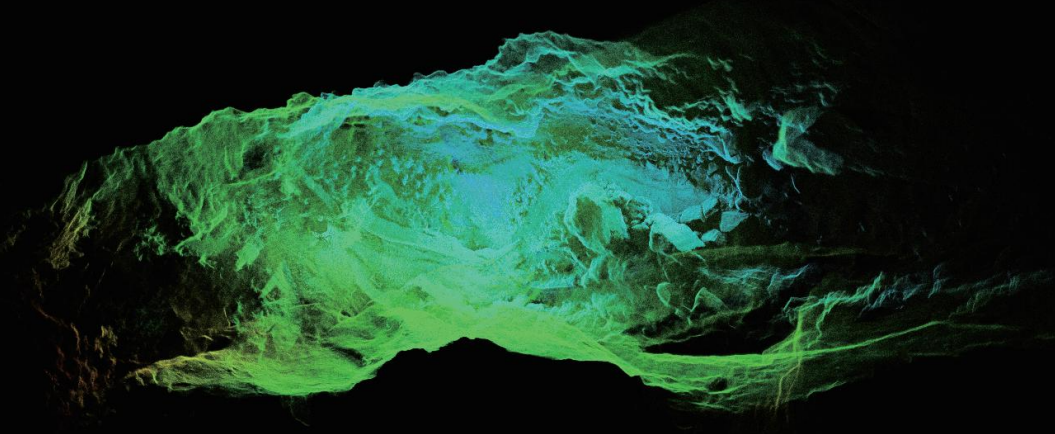
LIDAR SPATIAL SCANNER



YOUR PERSONAL LIDAR SPATIAL SCANNER

[store.3dmakerpro.com](https://store.3dmakerpro.com)

# NATURAL CAVE DATA COLLECTION AND MEASUREMENT



- ① Raven achieves more accurate point cloud collection, solves the problem of collecting physical data in large spaces, and supports RTK positioning to improve the switching and comparison between space scanned objects and real scenes.



**Precise Point Cloud**



**Up to 2cm Accuracy**



**RTK Ready**

EXPANSION SUPPORT:  
RTK Expansion kit

# LARGE SCALE REAL-LIFE ONLINE 3D INTERACTIVE CASE



- ! Large scale real-time data collection, quickly forming online 3D interaction, 360 degree free shuttle, experience and discover the secrets of the most real physical space.



**Fusion Splatting Engine**



**AMOLED Screen**



**Instant Web Publisher**



**Fast Charging Battery**

EXPANSION SUPPORT:  
insta360 X4/X5 Expansion kit



## 3DMAKERPRO

Raven



Raven<sup>Max</sup>

### Performance Parameters:

Accuracy	2cm 10 meters, 3cm 20 meters, 5cm 40 meters
Scan radius	40m @ 10% reflectivity 50m @ 80% reflectivity
Scan range	80-100 meters
Scan angle	Horizontal 360°, Vertical 40°
Point cloud frequency	150,000 points/second
Laser light source	905 nm
Eye safety level	Class 1 (IEC60825-1:2014) Eye safe
Color texture	12MP 1-camera/2-camera system
HDR mode	No
Data interface	USB-TypeC*1
Power delivery	USB-TypeC*1
Network support	Wi-Fi 5
Screen	3.9" AMOLED
Expansion support	RTK Expansion kit      insta360 X4/X5 Expansion kit Various Accessories
Output format	3D Color Point Cloud PLY      3D Gaussian Splatting PLY 3D Colored Polygonal Model OBJ
Volume	148*288*98mm
Built-in battery	12000mah, supports 2 hours of work, supports external power supply while charging
Weight	1.1 kg
Configuration	8 Cores 2.4GHz 32GB (Supports TF card expansion)