

HomeTown Primary Care



INSURANCE-BASED HEALTHCARE VS. DIRECT PRIMARY CARE GUIDE

Cost Comparison



THE COST BREAKDOWN YOU NEED TO KNOW

Are you tired of getting hit with surprise medical bills?

Let's break down the REAL cost difference between traditional insurance-based healthcare and the Direct Primary Care (DPC) model, like what we offer at Hometown Primary Care!

INSURANCE-BASED HEALTHCARE

Monthly Premiums: \$400-\$1,200
Copays for Office Visits: \$25-\$50 per visit
Specialist Visits: \$50-\$100+
High Deductibles: \$2,000-\$10,000
Surprise Bills: Wait my flu test was not covered?!?!
My MRI was how much?!?!

DIRECT PRIMARY CARE (DPC) AT HOMETOWN PRIMARY CARE

Monthly Membership: \$80-165 (flat rate, no surprises)
Office Visits: \$0 (that's right, FREE)
Access to Your Provider: Text, Call, or Visit anytime
(no waiting weeks for an appointment)
Discounted Labs, Imaging, & Meds: Save up to 80%
No Copays, No Deductibles: Just simple, direct care

THE REAL SAVINGS

What You Get With Direct Primary Care:

- Unlimited visits
- Discounts on Lab/Imaging & Meds
- Shorter wait times
- Direct access to your provider
- Transparent pricing

All for a fraction of the cost:

- No hidden fees
- No insurance headaches
- No more "sticker shock" on your healthcare bills!

COST & TIME COMPARISON

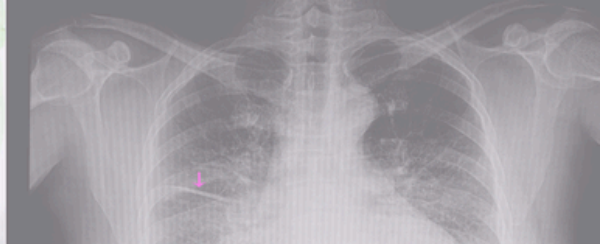
TRADITIONAL INSURANCE-BASED

VS.

DIRECT PRIMARY CARE

****Does not include your payroll deductions***

Services	Traditional Insurance Office	DPC at Hometown Primary Care
Office Visits (medicine refills/disease)	\$25-\$50 (each visit)*	\$0 (included)
Sick/Urgent Care Vist	\$40-\$50 (each visit)*	\$0 (included)
Wait Time for Appt	2-4 weeks	Same Day/Next Day
Time In Waiting Room	30 minutes	5-10 minutes
Injections	\$50-\$100*	\$25
In clinic Testing/procedures (flu, strep, sutures, staples,	\$15-\$200	\$0 (included)
Basic Labs (cbc, lipid, etc)	\$100 (+ lab fee)*	\$0 (included x 1 per year)
Time to Lab Results Review	3-7 days	1-2 day
Average Annual Cost	\$900-\$1500* (4-6 Visits a year)	\$960-\$1080 (unlimited visits)



IMAGING & LAB WORK COST COMPARISON

TRADITIONAL INSURANCE-BASED OFFICE

vs.

DIRECT PRIMARY CARE

Service	Traditional Insurance (with deductible)	Cash/DPC Pricing	SAVINGS
Xray	\$200-\$400	\$35-\$100	\$100-\$300
CT Scan	\$265-\$4500	\$130-\$500	\$135-\$4000
MRI	\$450-\$4000	\$265-\$1000	\$185-\$3000
US	\$300-\$600	\$115-\$450	\$150-\$185
CBC	\$15-\$35	\$4	\$11-\$31
A1C	\$16-\$50	\$8	\$8-\$42
Lipid Panel	\$25-\$41	\$5	\$20-\$36
Vitamin D level	\$150-\$300	\$25	\$125-\$275

Ready To Take Control of Your Care and Budget?

Become a Member
of the
Hometown Primary Care Family

JOIN OUR
FAMILY TODAY



Hometown Primary Care
13511 NE 23rd Street, #140, Choctaw, OK
73020
405-591-3584
thehometownprimarycare@gmail.com

Hometown Primary Care

