

- +
 - • Embedding Virtual Care into Everyday Homecare Practice



1. Welcome & Purpose



Virtual Care is coming into homecare at pace



Providers are critical to making it work in practice



Today is about *co-design*, not decisions already made

Outline of the Session



What do we mean by Virtual Care?



Tabletop Exercise 1:
Current Reality

Feedback



Tabletop Exercise 2:
Can Virtual Care Help

Feedback



Tabletop Exercise 3:
Design Principles

Feedback



End: Closing the Loop

Quick hands up



Who is already using any form of Virtual Care?



Who is curious but unsure?



Who is sceptical?

What do we mean by Virtual Care?



Remote monitoring (e.g. falls, vitals, sensors)



Video check-ins/virtual welfare checks



Digital tools supporting visits (not replacing care)



Table Exercise 1: Current Reality (10 min)

- On your table – Please discuss and write down
 1. Where does care *currently* feel under pressure?
 - Time, travel, staffing, admin, risk
 2. What tasks feel *least* value-adding for carers?
 3. Where do you already use technology (formal or informal)?
- You will be asked to select one answer per question during feedback.

Feedback

Can each table
share one Answer
to each question





Table Exercise 2: Where Virtual Care Could Help (10 min)

- Which parts of care *might* benefit from added digital support?
- What would *never* be appropriate for Virtual Care?
- Where could Virtual Care:
 - Support carers?
 - Improve safety?
 - Reduce unnecessary visits?

Feedback

Can each table
share one Answer
to each question



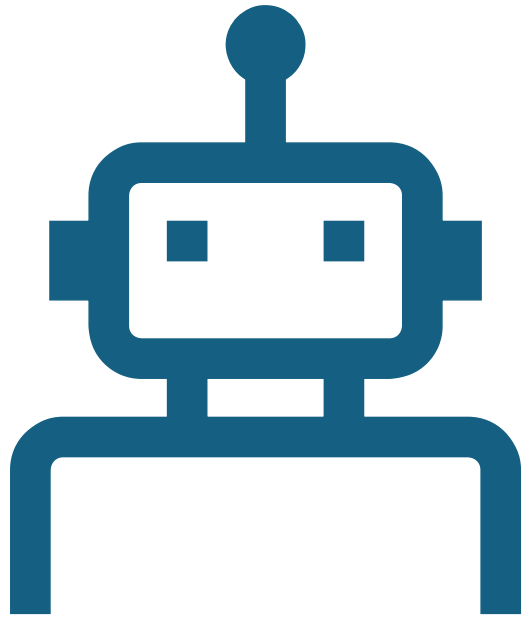


Table Exercise 3 – Design Principles (5 min)

- Each table completes the sentence:
- “Virtual Care should **always**...”
- “Virtual Care should **never**...”
- “We would support Virtual Care if...”

Feedback

Can each table
share one Answer
to each question





Closing the Loop – What Happens Next

- What will be done with today's feedback
- When providers will see it reflected
- How they'll stay involved