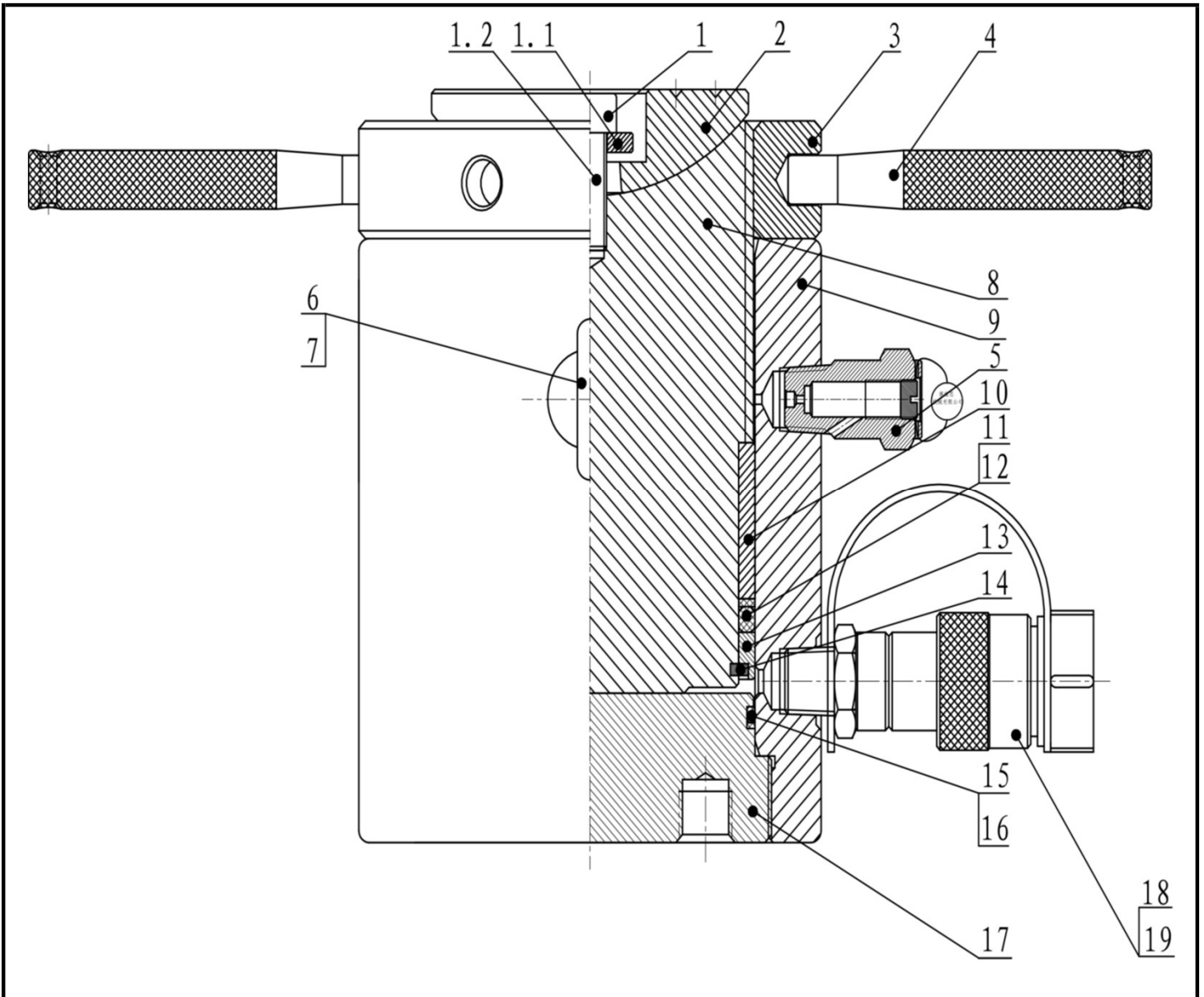


Single-Acting High Tonnage Lock-Nut Cylinders - SHTL

Doc. : L1051A Date : 2019/01



| Item NO. | Description | Qty | Part NO. | | | |
|----------|---|-----|---------------------------|-------------|-------------|-------------|
| | | | SHTL100-50 | SHTL100-100 | SHTL100-150 | SHTL100-200 |
| 1 | Screw components | 1 | - | | | |
| 2 | Lifting head (Item #1 included) | 1 | 2.001.02718 | | | |
| 3 | Lock ring | 1 | 2.001.00397 | | | |
| 4 | Handle | 2 | 2.001.02649 | | | |
| 5 | Trip Limit valve | 1 | 2.008.00050 | | | |
| 6 | Lifting bolt (Item #7 included) | 2 | 1.3.009.00005 | | | |
| 7 | Hexagon nut | 2 | - | | | |
| 8 | Piston rod | 1 | 2.001.00405 (SHTL100-50) | | | |
| | | 1 | 2.001.03357 (SHTL100-100) | | | |
| | | 1 | 2.001.00367 (SHTL100-150) | | | |
| | | 1 | 2.001.00399 (SHTL100-200) | | | |
| 9 | Oil cylinder | 1 | 2.001.00406 (SHTL100-50) | | | |
| | | 1 | 2.001.03358 (SHTL100-100) | | | |
| | | 1 | 2.001.00375 (SHTL100-150) | | | |
| | | 1 | 2.001.00400 (SHTL100-200) | | | |
| 10 | Front guide sleeve | 1 | 2.001.00401 | | | |
| 11 | Backup Washer | 1 | ● | | | |
| 12 | O-ring | 1 | ● | | | |
| 13 | Back guide sleeve | 1 | 2.001.00139 | | | |
| 14 | Semi-ring | 1 | 2.001.00009 | | | |
| 15 | Backup Washer | 1 | ● | | | |
| 16 | O-ring | 1 | ● | | | |
| 17 | Bottom cap | 1 | 2.001.00403 | | | |
| 18 | Female connector | 1 | 1.3.025.00004 | | | |
| 19 | Connector protective jacket for NPT3/8" | 1 | 1.3.097.00002 | | | |
| ● | Repair kit | 1 | SHTL100-RK | | | |