



B I A

T O O L S

Hand Pump

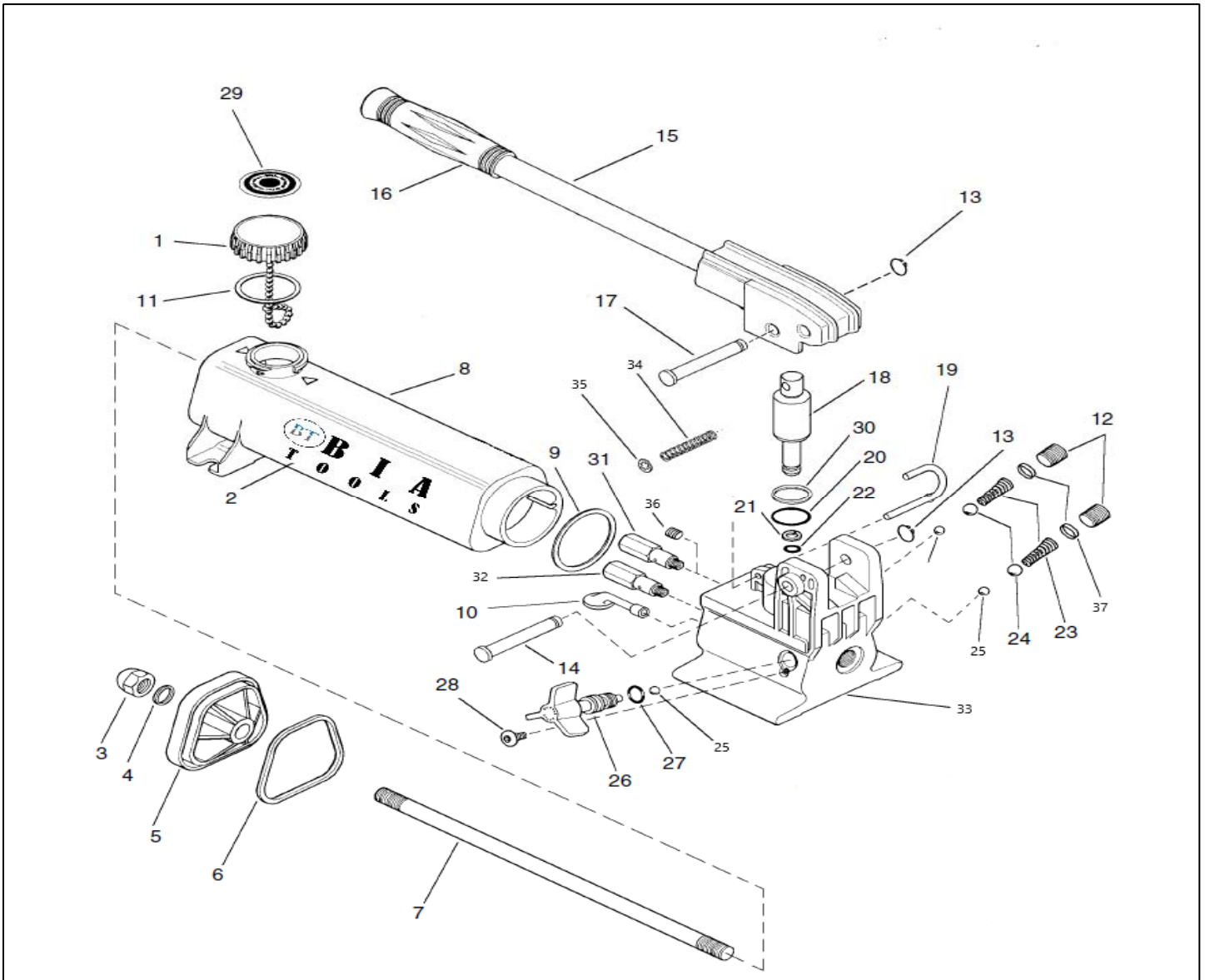
MODEL: HPL-392

Form. #

sales@bia-tools.com www.bia-tools.com

Not all components of cylinder are replacement items, but are illustrated as a convenient reference of location and position in the assembly sequence.

PARTS ILLUSTRATION





B I A
T O O L S

Hand Pump

MODEL: HPL-392

Form. #

sales@bia-tools.com www.bia-tools.com

PARTS LIST

ITEM	DESCRIPTION	QTY	HPL-392
1	Vent Cap Assembly	1	BT-HPL392-01
2	Decal	2	*
3	Acorn Nut	1	BT-HPL392-03
4	Gasket	1	*
5	End Cap (Included #6)	1	BT-HPL392-05
6	Gasket O-Ring	1	-
7	Tie Rod	1	BT-HPL392-07
8	Reservoir	1	BT-HPL392-08
9	Gasket	1	*
10	Oil Filter	1	BT-HPL392-10
11	Gasket	1	*
12	Pipe Plug	2	BT-HPL392-12
13	Retaining Ring	2	-
14	Beam Pin (Included #13)	1	BT-HPL392-14
15	Beam And Handle Assembly	1	BT-HPL392-15
16	Handle Grip	1	BT-HPL392-16
17	Cross Pin (Included #13)	1	BT-HPL392-17
18	Plunger Assembly	1	BT-HPL392-18
19	Locking Pin (Included #34 and #35)	1	BT-HPL392-19
20	O-Ring	1	*
21	Back-Up Ring	1	*
22	O-Ring	1	*
23	Spring	2	*
24	Ball	2	*
25	Ball	3	*



B I A
T O O L S

REGULAR SINGLE ACTING

MODEL: HPL-392

Form. #

sales@bia-tools.com www.bia-tools.com

PARTS LIST

ITEM	DESCRIPTION	QTY	HPL-392
26	Spindle Assembly	1	BT-HPL392-26
27	O-Ring	1	*
28	Screw	1	*
29	Vent Cap Decal	1	-
30	Back-Up Washer	1	*
31	Bypass Valve	1	BT-HPL392-31
32	Relief Valve	1	BT-HPL392-32
33	Base	1	BT-HPL392-33
34	Spring	1	-
35	Retaining Ring	1	-
36	Pipe Plug	1	*
37	Spring Cap	2	*
*	Included in Repair Kit	1	BT-HPL392-RK