



Hand Pump

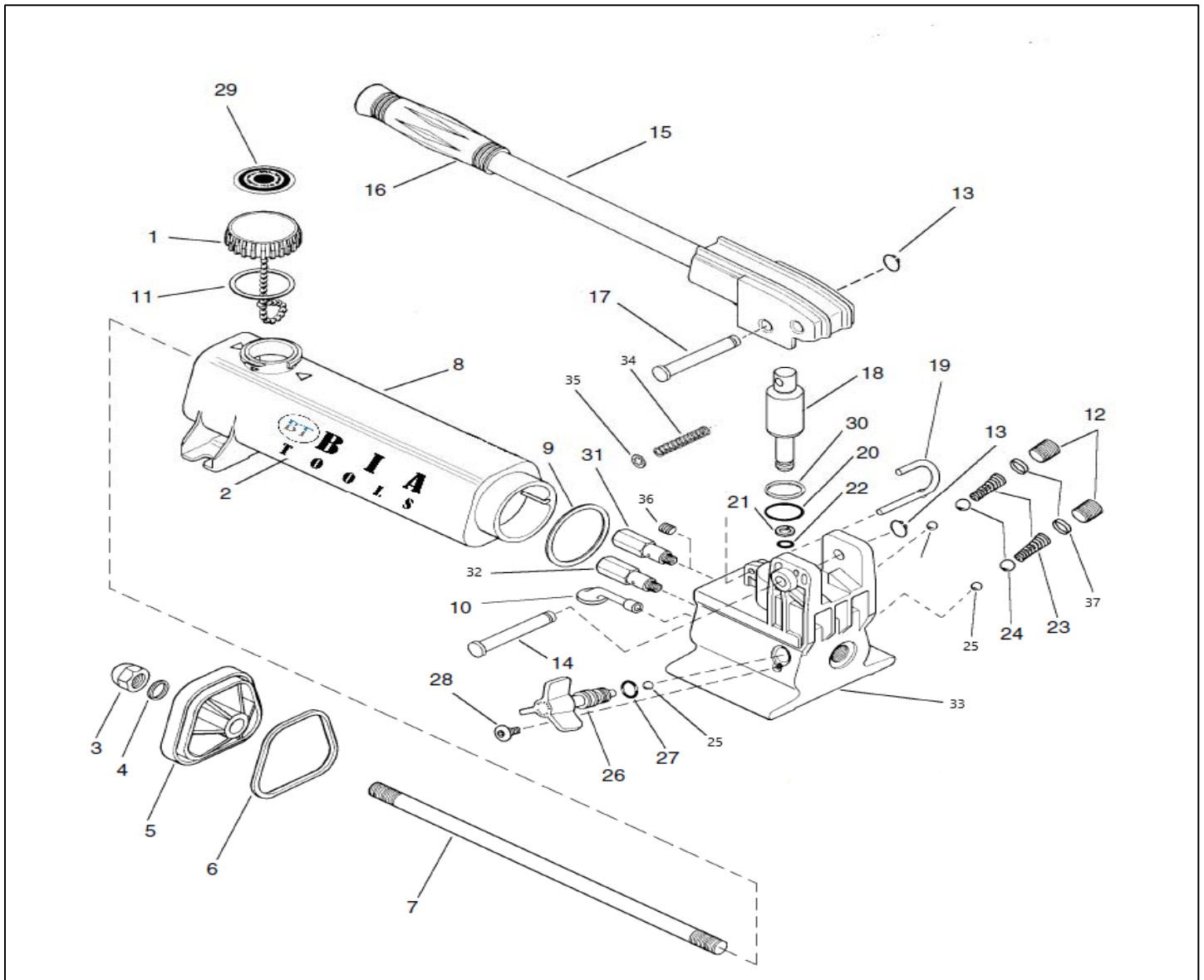
MODEL: HPL-142

Form. #

sales@bia-tools.com www.bia-tools.com

Not all components of cylinder are replacement items, but are illustrated as a convenient reference of location and position in the assembly sequence.

PARTS ILLUSTRATION





B I A
T O O L S

Hand Pump

MODEL: HPL-142

Form. #

sales@bia-tools.com www.bia-tools.com

PARTS LIST

ITEM	DESCRIPTION	QTY	HPL-142
1	Vent Cap Assembly	1	BT-HPL142-01
2	Decal	2	*
3	Acorn Nut	1	BT-HPL142-03
4	Gasket	1	*
5	End Cap	1	BT-HPL142-05
6	Gasket O-Ring	1	-
7	Tie Rod	1	BT-HPL142-07
8	Reservoir	1	BT-HPL142-08
9	Gasket	1	*
10	Oil Filter	1	BT-HPL142-10
11	Gasket	1	*
12	Pipe Plug	2	BT-HPL142-12
13	Retaining Ring	2	-
14	Beam Pin (Include #13)	1	BT-HPL142-14
15	Beam And Handle Assembly	1	BT-HPL142-15
16	Handle Grip	1	BT-HPL142-16
17	Cross Pin (Include #13)	1	BT-HPL142-17
18	Plunger	1	BT-HPL142-18
19	Locking Pin (Include #34 and #35)	1	BT-HPL142-19
20	O-Ring	1	*
21	Back-Up Ring	1	*
22	O-Ring	1	*
23	Spring	2	*
24	Ball	2	*
25	Ball	3	*



B I A
T O O L S

REGULAR SINGLE ACTING

MODEL: HPL-142

Form. #






sales@bia-tools.com www.bia-tools.com

PARTS LIST

ITEM	DESCRIPTION	QTY	HPL-142
26	Spindle Assembly	1	BT-HPL142-26
27	O-Ring	1	*
28	Screw	1	*
29	Vent Cap Decal	1	-
30	Back-Up Washer	1	*
31	Bypass Valve	1	BT-HPL142-31
32	Relief Valve	1	BT-HPL142-32
33	Base	1	BT-HPL142-33
34	Spring	1	-
35	Retaining Ring	1	-
36	Pipe Plug	1	*
37	Spring Cap	2	*
*	Repair Kit	1	BT-HPL142-RK

MODEL : HPL-142

ITEM	DESCRIPTION	HPL-142
1	Vent Cap Assembly	
2	Decal	
3	Acorn Nut	
5	End Cap	
6	Gasket O-Ring	
7	Tie Rod	
8	Reservoir	
14	Beam Pin (Include #13)	
15	Beam And Handle Assembly	
16	Handle Grip	
17	Cross Pin (Include #13)	
18	Plunger	
19	Locking Oin (Include #34 And #35)	
21	Back-Up Ring	
26	Spindle Assembly	
28	Screw	

29	Vent Cap Decal	
31	Bypass Valve	
32	Relief Valve	
33	Base	
36	Pipe Plug	

ITEM	INCLUDE IN REPAIR KIT	ITEM	INCLUDE IN REPAIR KIT
4	Gasket	23	Spring
9	Gasket	24	Ball
10	Oil Filter	25	Ball
11	Gasket	27	O-Ring
12	Pipe Plug	30	Back-Up Washer
20	O-Ring	37	Spring Cap
22	O-Ring	*	