



# B I A T O O L S

## REGULAR SINGLE ACTING

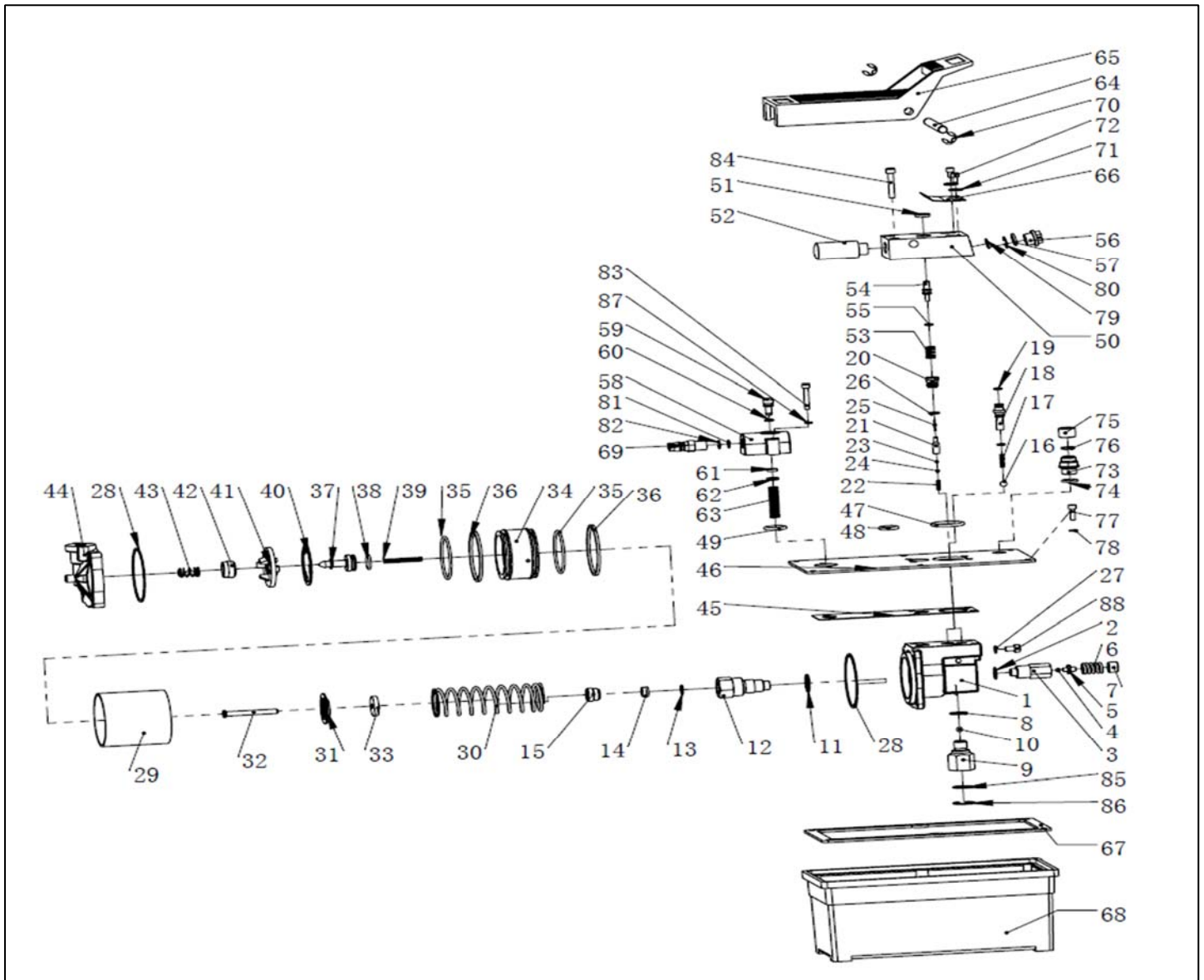
MODEL: AFP-1, AFP-2, AFP-3, AFP-4, AFP-5

Form. #

sales@bia-tools.com www.bia-tools.com

Not all components of cylinder are replacement items, but are illustrated as a convenient reference of location and position in the assembly sequence.

### PARTS ILLUSTRATION





**B I A**  
**T O O L S**

REGULAR SINGLE ACTING

MODEL: AFP-1, AFP-2, AFP-3, AFP-4, AFP-5

Form. #

sales@bia-tools.com www.bia-tools.com

PARTS LIST

ITEM	DESCRIPTION	QTY	AFP-1	AFP-2	AFP-3	AFP-4	AFP-5
1	Plunger Pump Body	1	BT-AFP-01	BT-AFP-01	BT-AFP-01	BT-AFP-01	BT-AFP-01
2	Overflow Washer	1	BT-AFP-02	BT-AFP-02	BT-AFP-02	BT-AFP-02	BT-AFP-02
3	Overflow Valve Body	1	BT-AFP-03	BT-AFP-03	BT-AFP-03	BT-AFP-03	BT-AFP-03
4	Overflow One-Way Valve	1	*	*	*	*	*
5	Overflow Ball Holder	1	BT-AFP-05	BT-AFP-05	BT-AFP-05	BT-AFP-05	BT-AFP-05
6	Overflow Spring	1	*	*	*	*	*
7	Adjust Plug	1	BT-AFP-07	BT-AFP-07	BT-AFP-07	BT-AFP-07	BT-AFP-07
8	Copper Washer	1	BT-AFP-08	BT-AFP-08	BT-AFP-08	BT-AFP-08	BT-AFP-08
9	Oil Absorption Filter	1	BT-AFP-09	BT-AFP-09	BT-AFP-09	BT-AFP-09	BT-AFP-09
10	Oil Absorption One-Way Valve	1	*	*	*	*	*
11	Copper Washer	1	BT-AFP-11	BT-AFP-11	BT-AFP-11	BT-AFP-11	BT-AFP-11
12	Plunger Body	1	BT-AFP-12	BT-AFP-12	BT-AFP-12	BT-AFP-12	BT-AFP-12
13	Plunger Seal Washer	1	*	*	*	*	*
14	Plunger Seal Washer	1	*	*	*	*	*
15	Front Cover	1	BT-AFP-15	BT-AFP-15	BT-AFP-15	BT-AFP-15	BT-AFP-15
16	Oil Outlet One-Way Valve	1	*	*	*	*	*
17	Oil-Stop Spring	1	*	*	*	*	*
18	High Pressure Oil Connecting Body	1	BT-AFP-18	BT-AFP-18	BT-AFP-18	BT-AFP-18	BT-AFP-18
19	High Pressure Nozzle O-Ring	2	*	*	*	*	*
20	Oil Drain Valve	1	BT-AFP-20	BT-AFP-20	BT-AFP-20	BT-AFP-20	BT-AFP-20
21	Oil Drain Valve Spool	2	BT-AFP-21	BT-AFP-21	BT-AFP-21	BT-AFP-21	BT-AFP-21
22	Oil Drain Valve Spring	1	*	*	*	*	*
23	Oil Drain One-Way Valve	1	*	*	*	*	*
24	Oil Drain Ball Holder	1	*	*	*	*	*
25	Oil Drain Thimble	1	*	*	*	*	*
26	Oil Drain Valve O-Ring	1	*	*	*	*	*
27	Cooper Washer	1	BT-AFP-27	BT-AFP-27	BT-AFP-27	BT-AFP-27	BT-AFP-27
28	Air Cylinder Seal Ring	2	*	*	*	*	*
29	Cylinder Bore	1	BT-AFP-29	BT-AFP-29	BT-AFP-29	BT-AFP-29	BT-AFP-29



# B I A T O O L S

## REGULAR SINGLE ACTING

MODEL: AFP-1, AFP-2, AFP-3, AFP-4, AFP-5

Form. #

sales@bia-tools.com www.bia-tools.com

### PARTS LIST

ITEM	DESCRIPTION	QTY	AFP-1	AFP-2	AFP-3	AFP-4	AFP-5
30	Plunger Return Spring	1	*	*	*	*	*
31	Plunger Stop Plate	1	BT-AFP-31	BT-AFP-31	BT-AFP-31	BT-AFP-31	BT-AFP-31
32	Plunger	1	BT-AFP-32	BT-AFP-32	BT-AFP-32	BT-AFP-32	BT-AFP-32
33	Plunger Anti-Hiting Washer	1	*	*	*	*	*
34	Big Piston	1	BT-AFP-34	BT-AFP-34	BT-AFP-34	BT-AFP-34	BT-AFP-34
35	Big Piston O-Ring	2	*	*	*	*	*
36	Piston Ring	2	*	*	*	*	*
37	Small Piston	1	BT-AFP-37	BT-AFP-37	BT-AFP-37	BT-AFP-37	BT-AFP-37
38	Small Piston O-Ring	1	*	*	*	*	*
39	Small Piston Return Spring	1	*	*	*	*	*
40	Big Piston Seal Washer	1	*	*	*	*	*
41	Big Piston Cover	1	BT-AFP-41	BT-AFP-41	BT-AFP-41	BT-AFP-41	BT-AFP-41
42	Small Piston Seal Washer	1	*	*	*	*	*
43	Cylinder Head Spring	1	*	*	*	*	*
44	Back Cover	1	BT-AFP-44	BT-AFP-44	BT-AFP-44	BT-AFP-44	BT-AFP-44
45	Pump Cover Seal Washer	1	*	*	*	*	*
46	Reservoir Cover	1	BT-AFP-46	BT-AFP-46	BT-AFP-46	BT-AFP-46	BT-AFP-46
47	Oil Outlet O-Ring	1	*	*	*	*	*
48	Air Vent O-Ring	1	*	*	*	*	*
49	Air Intlet O-Ring	1	*	*	*	*	*
50	Oil Outlet Valve Block	1	BT-AFP-50	BT-AFP-50	BT-AFP-50	BT-AFP-50	BT-AFP-50
51	Anti-Dust Ring	1	BT-AFP-51	BT-AFP-51	BT-AFP-51	BT-AFP-51	BT-AFP-51
52	Muffler	1	BT-AFP-52	BT-AFP-52	BT-AFP-52	BT-AFP-52	BT-AFP-52
53	Oil Drain Spring	1	*	*	*	*	*
54	Oil Drain Switch	1	BT-APF-54	BT-APF-54	BT-APF-54	BT-APF-54	BT-APF-54
55	Oil Drain Pressure Bar O-Ring	1	*	*	*	*	*
56	Oil Port End Cap	1	BT-AFP-56	BT-AFP-56	BT-AFP-56	BT-AFP-56	BT-AFP-56
57	Oil Port End Cap O-Ring	1	BT-AFP-57	BT-AFP-57	BT-AFP-57	BT-AFP-57	BT-AFP-57
58	Air Intlet Valve Body	1	BT-AFP-58	BT-AFP-58	BT-AFP-58	BT-AFP-58	BT-AFP-58
59	Air Intlet Switch	1	BT-AFP-59	BT-AFP-59	BT-AFP-59	BT-AFP-59	BT-AFP-59
60	Air Intlet Switch O-Ring	1	*	*	*	*	*



# B I A T O O L S

## REGULAR SINGLE ACTING

MODEL: AFP-1, AFP-2, AFP-3, AFP-4, AFP-5

Form. #

sales@bia-tools.com www.bia-tools.com

### PARTS LIST





ITEM	DESCRIPTION	QTY	AFP-1	AFP-2	AFP-3	AFP-4	AFP-5
61	Air Intlet Switch Seal Washer	1	*	*	*	*	*
62	Air Intlet Seal Washer Cap	1	BT-AFP-62	BT-AFP-62	BT-AFP-62	BT-AFP-62	BT-AFP-62
63	Air Intlet Spring	1	*	*	*	*	*
64	Pin	1	BT-AFP-64	BT-AFP-64	BT-AFP-64	BT-AFP-64	BT-AFP-64
65	Foot Pedal	1	BT-AFP-65	BT-AFP-65	BT-AFP-65	BT-AFP-65	BT-AFP-65
66	Return Spring	1	BT-AFP-66	BT-AFP-66	BT-AFP-66	BT-AFP-66	BT-AFP-66
67	Reservoir Seal Washer	1	*	*	*	*	*
68	Reservoir	1	BT-AFP1-68	BT-AFP2-68	BT-AFP3-68	BT-AFP4-68	BT-AFP5-68
69	Air Intlet Connector	1	BT-AFP-69	BT-AFP-69	BT-AFP-69	BT-AFP-69	BT-AFP-69
70	Snap Ring	2	BT-AFP-70	BT-AFP-70	BT-AFP-70	BT-AFP-70	BT-AFP-70
71	Washer	2	BT-AFP-71	BT-AFP-71	BT-AFP-71	BT-AFP-71	BT-AFP-71
72	Bolt	2	BT-AFP-72	BT-AFP-72	BT-AFP-72	BT-AFP-72	BT-AFP-72
73	Breathing Valve (Include #75)	1	BT-AFP-73	BT-AFP-73	BT-AFP-73	BT-AFP-73	BT-AFP-73
74	O-Ring	1	BT-AFP-74	BT-AFP-74	BT-AFP-74	BT-AFP-74	BT-AFP-74
75	Breathing Cap	1	-	-	-	-	-
76	Seal	1	BT-AFP-76	BT-AFP-76	BT-AFP-76	BT-AFP-76	BT-AFP-76
77	Bolt	4	BT-AFP-77	BT-AFP-77	BT-AFP-77	BT-AFP-77	BT-AFP-77
78	Nylon Washer	4	BT-AFP-78	BT-AFP-78	BT-AFP-78	BT-AFP-78	BT-AFP-78
79	Oil Return Filter	1	*	*	*	*	*
80	Snap Ring	1	BT-AFP-80	BT-AFP-80	BT-AFP-80	BT-AFP-80	BT-AFP-80
81	Air Intlet Filter	1	BT-AFP-81	BT-AFP-81	BT-AFP-81	BT-AFP-81	BT-AFP-81
82	Snap Ring	1	BT-AFP-82	BT-AFP-82	BT-AFP-82	BT-AFP-82	BT-AFP-82
83	Bolt	2	BT-AFP-83	BT-AFP-83	BT-AFP-83	BT-AFP-83	BT-AFP-83
84	Bolt	4	BT-AFP-84	BT-AFP-84	BT-AFP-84	BT-AFP-84	BT-AFP-84
85	Filter	1	BT-AFP-85	BT-AFP-85	BT-AFP-85	BT-AFP-85	BT-AFP-85
86	Snap Ring	1	BT-AFP-86	BT-AFP-86	BT-AFP-86	BT-AFP-86	BT-AFP-86
87	Spring Washer	2	BT-AFP-87	BT-AFP-87	BT-AFP-87	BT-AFP-87	BT-AFP-87
88	Bolt	1	BT-AFP-88	BT-AFP-88	BT-AFP-88	BT-AFP-88	BT-AFP-88
*	Included In Repair Kit	1	BT-AFP-RK	BT-AFP-RK	BT-AFP-RK	BT-AFP-RK	BT-AFP-RK

MODEL : AFP-1, AFP-2, AFP-3, AFP-4, AFP-5

ITEM	DESCRIPTION	AFP-1, AFP-2, AFP-3, AFP-4, AFP-5
1	Plunger Pump Body	
2	Overflow Washer	
3	Overflow Valve Body	
5	Overflow Ball Holder	
7	Adjust Plug	
8	Copper Washer	
9	Oil Absorption Filter	
11	Copper Washer	
12	Plunger Body	
15	Front Cover	
18	High Pressure Oil Connecting Body	
20	Oil Drain Valve	
21	Oil Drain Valve Spool	
27	Cooper Washer	
29	Cylinder Bore	

31	Plunger Stop Plate	
32	Plunger	
34	Big Piston	
37	Small Piston	
41	Big Piston Cover	
44	Back Cover	
46	Reservoir Cover	
50	Oil Outlet Valve Block	
51	Anti-Dust Ring	
52	Muffler	
54	Oil Drain Switch	
56	Oil Port End Cap	
57	Oil Port End Cap O-Ring	
58	Air Intlet Valve Body	
59	Air Intlet Switch	
62	Air Intlet Seal Washer Cap	
64	Pin	

65	Foot Pedal	
66	Return Spring	
68	Reservoir	
69	Air Intlet Connector	
70	Snap Ring	
71	Washer	
72	Bolt	
73	Breathing Valve (Include #75)	
74	O-Ring	
76	Seal	
77	Bolt	
78	Nylon Wahser	
80	Snap Ring	
81	Air Intlet Filter	
82	Snap Ring	
83	Bolt	
84	Bolt	

85	Filter	
86	Snap Ring	
87	Spring Washer	
88	Bolt	

ITEM	INCLUDE IN REPAIR KIT	ITEM	INCLUDE IN REPAIR KIT
4	Overflow One-Way Valve	38	Small Piston O-Ring
6	Overflow Spring	39	Small Piston Return Spring
10	Oil Absorption One-Way Valve	40	Big Piston Seal Washer
13	Plunger Seal Washer	42	Small Piston Seal Washer
14	Plunger Seal Washer	43	Cylinder Head Spring
16	Oil Outlet One-Way Valve	45	Pump Cover Seal Washer
17	Oil-Stop Spring	47	Oil Outlet O-Ring
19	High Pressure Nozzle O-Ring	48	Air Vent O-Ring
22	Oil Drain Valve Spring	49	Air Intlet O-Ring
23	Oil Drain One-Way Valve	53	Oil Drain Spring
24	Oil Drain Ball Holder	55	Oil Drain Pressure Bar O-Ring
25	Oil Drain Thimble	60	Air Intlet Switch O-Ring

ITEM	INCLUDE IN REPAIR KIT
26	Oil Drain Valve O-Ring
28	Air Cylinder Seal Ring
30	Plunger Return Spring
33	Plunger Anti-Hiting Washer
35	Big Piston O-Ring
36	Piston Ring

ITEM	INCLUDE IN REPAIR KIT
61	Air Intlet Switch Seal Washer
63	Air Intlet Spring
67	Reservoir Seal Washer
79	Oil Return Filter
*	