



VISTA MONTAIRE

RISE ABOVE

A New Perspective Awaits



Elevated Living at **VISTA MONTAIRE**

Perched above Bakersfield, Vista Montaire offers a rare collection of hilltop homesites designed to capture sweeping views.

Open space, quiet surroundings, and thoughtful design create a setting where life takes on a new perspective.

WHY CHOOSE

Vista Montaire?



Panoramic Hilltop Views

Homesites positioned to capture sweeping vistas across the surrounding hills, where golden sunsets and open skies become part of everyday life.



Private Gated Community

A gated neighborhood creates a secure environment and a welcoming sense of privacy for residents and their families.



Conveniently Located

Enjoy the best of both worlds, an elevated neighborhood setting just minutes from shopping, dining, schools, and everyday conveniences.





The Vista Montaire Lifestyle



A Quiet Setting

Vista Montaire offers a peaceful neighborhood atmosphere where evenings are calmer and life moves at a more relaxed pace.



Nature at Your Doorstep

Morning walks, afternoons on the lake, and weekends exploring the mountains become part of everyday living.



Outdoor Living

Generous backyards create space for outdoor living, entertaining, and the pool you've always imagined.

**Where moments
*become memories.***



The Shasta

2,578 Sq.Ft. | 4 Bedrooms | 3 Baths | 3-Car Garage

SHASTA

The Gathering Place

The Shasta is thoughtfully designed to balance connection, privacy, and flexibility.

Gathering spaces bring the kitchen, dining, and family areas together while maintaining a sense of purpose for each. A distinctive split-wing layout places the primary suite privately apart from the secondary bedrooms. An optional FlexSuite, with the ability to add a private entrance, offers adaptable space for extended family, guests, or future rental opportunities.

❖ Central Gathering Kitchen

A spacious kitchen anchors the home and keeps everyone connected during everyday moments.

❖ Indoor-Outdoor Living

Covered patio extends the home's gathering spaces outdoors.

❖ Distinctive Split-Wing Design

Primary suite privately set apart from the secondary bedrooms.

❖ FlexSuite Option

Create a private living space ideal for guests, extended family, or rental flexibility.



TV CABINET OPTION IN FAMILY ROOM

HIGHLIGHTS

- 2,578 - 2,614 Sq.Ft.
- 3 - 4 Bedrooms
- 3 Baths
- 3-Car Garage

AVAILABLE ELEVATIONS



FARMHOUSE



SPANISH



CONTEMPORARY

SHASTA FLOORPLAN

SPLIT-WING DESIGN

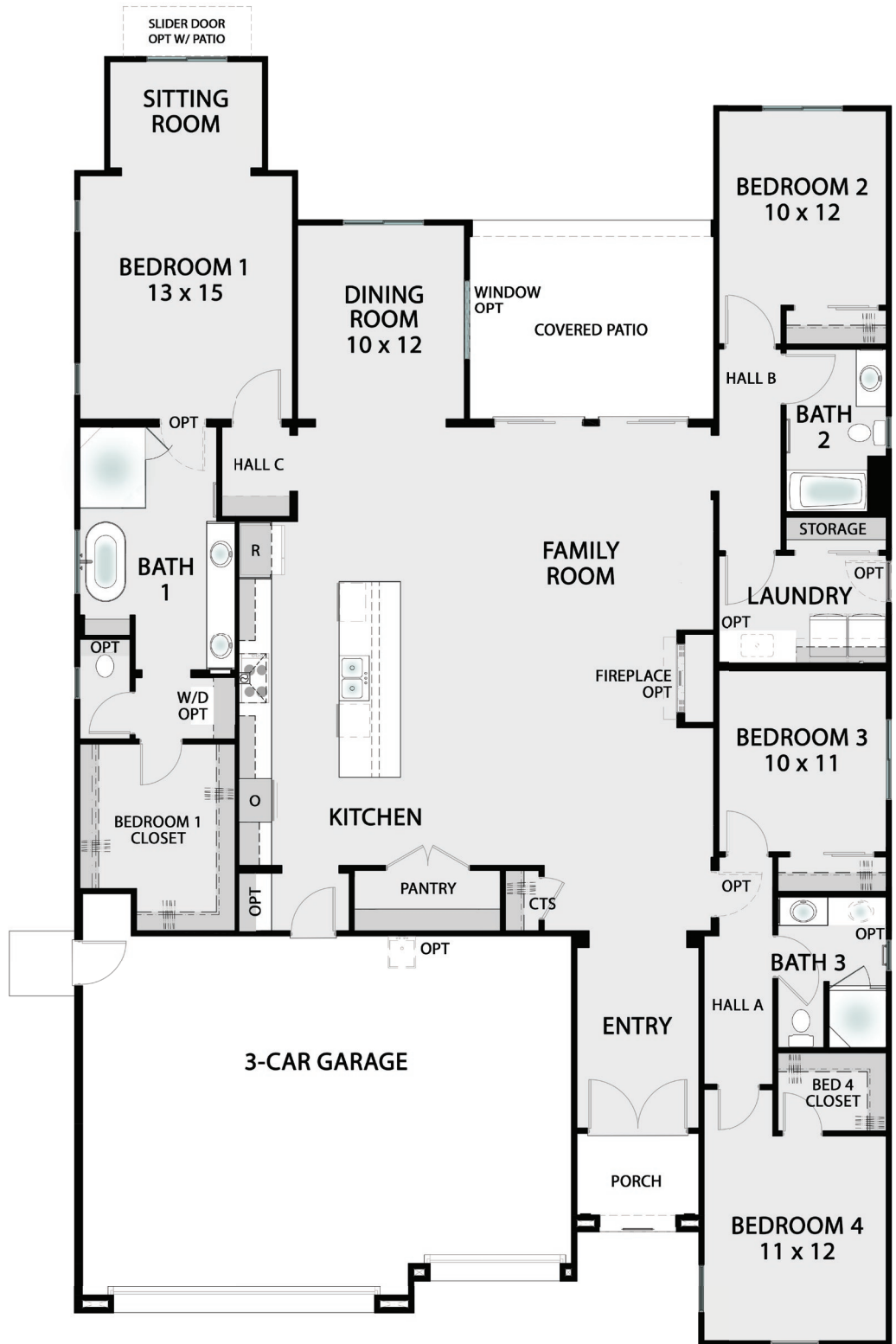
The primary suite is set apart from the secondary bedrooms, creating a quiet retreat while maintaining easy connection to the home's main living spaces.



DINING ROOM
W/ WINDOW OPT



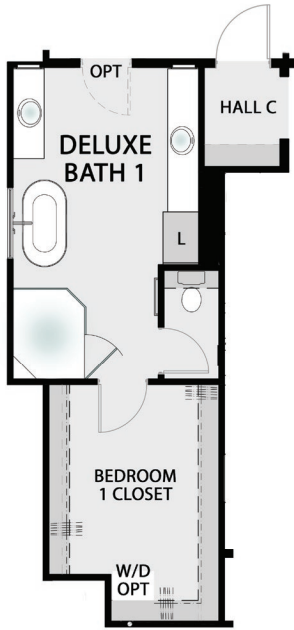
FAMILY ROOM



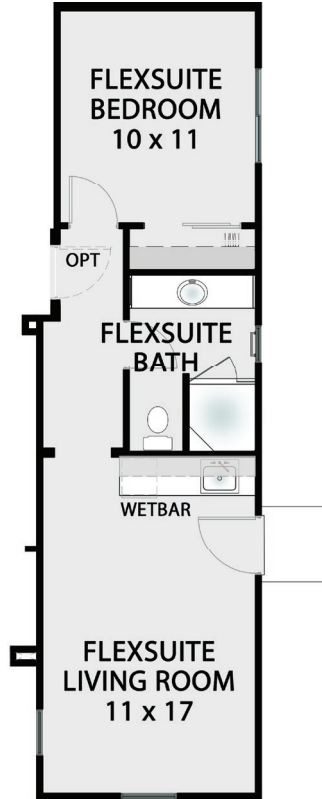
2,578 SQ.FT. | 4 BEDROOMS | 3 BATHS | 3-CAR GARAGE

Designed for Connection

Customize Your Shasta



DELUXE BATH 1
[+36 SQ.FT.]



FLEXSUITE OPT
IN LIEU OF
BEDROOMS 3 & 4 AND
BATH 3



SHOWER OPT
IN BATH 2

Virtual Walkthrough



Popular Options



WETBAR OPTION IN FLEXSUITE



FLEXSUITE BEDROOM

BUILDER RESERVES THE RIGHT TO MODIFY PLANS, ELEVATIONS, FEATURES AND SPECIFICATIONS WITHOUT NOTICE. ALL FLOORPLAN DIMENSIONS ARE ESTIMATES.

Where legacies *are made.*



The Heirloom

2,715 Sq.Ft. | 4 Bedrooms | 3 Baths | 3-Car Garage

HEIRLOOM

The Legacy Builder

The Heirloom blends thoughtful design with long-term adaptability. A spacious great room and covered patio create inviting spaces for everyday living and entertaining.

With the option to add a private attached ADU in place of one garage, the Heirloom offers a rare opportunity for rental income, extended family living, or long-term investment flexibility, all while maintaining the comfort and functionality of the primary home.

❖ **Optional ADU or Deluxe ADU**

Separate living space ideal for rental income, guests, or multigenerational living.

❖ **Optional 4-Car Garage**

Expanded garage configuration provides room for vehicles, storage, hobbies, or gear.

❖ **Covered Outdoor Living**

A generous patio extends the home outdoors for relaxed evenings and entertaining.

❖ **Spacious Great Room**

A large central gathering space designed for everyday connection.



FAMILY ROOM W/ POCKET PATIO DOOR OPT

HIGHLIGHTS

- 2,715 - 3,013 Sq.Ft.
- 4 - 5 Bedrooms
- 3 - 4 Baths
- 2 - 4-Car Garage

AVAILABLE ELEVATIONS



FARMHOUSE



SPANISH



CONTEMPORARY

HEIRLOOM FLOORPLAN



**Live in one,
rent the other.**

With options like ADU and Deluxe ADU configurations, the Heirloom creates opportunities for rental income, multigenerational living, or long-term property value.



KITCHEN

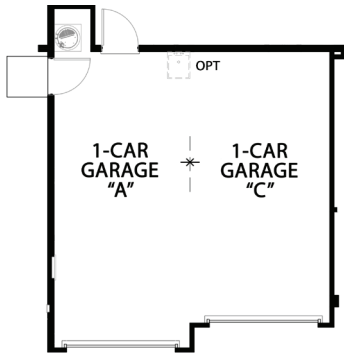


BATH 1

2,715 SQ.FT. | 4 BEDROOMS | 3 BATHS | 3-CAR GARAGE

Designed for Possibility

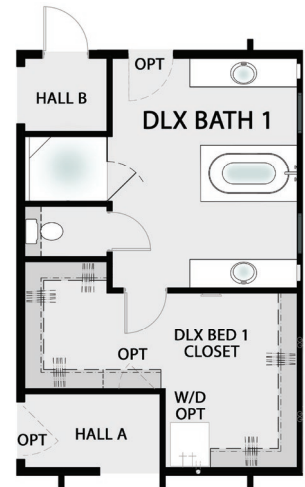
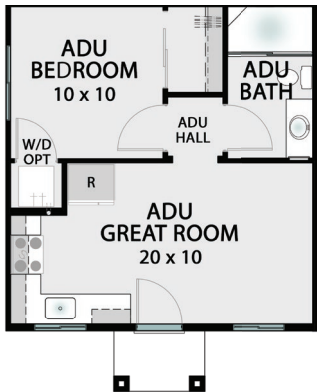
Customize Your Heirloom



**POCKET PATIO DOOR OPT
IN FAMILY ROOM**

**SHOWER OPT
IN BATH 2**

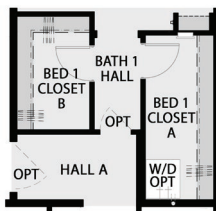
**GARAGE "C" OPT
IN LIEU OF OFFICE
[-215 SQ.FT.]**



**ADU OPT + GARAGE "C"
IN LIEU OF GARAGE B
[+220 SQ.FT.]**

**DLX ADU OPT + GARAGE "C"
IN LIEU OF GARAGE B,
BED 4, BATH 3
[+220 SQ.FT.]**

**DELUXE BATH 1
[+78 SQ.FT.]**



**A/B CLOSET OPT
IN LIEU OF BED 1
CLOSET**

Virtual Walkthrough



**Where traditions
*live on.***



The Sonoma

2,892 Sq.Ft. | 4 Bedrooms | 3 Baths | 3-Car Garage

SONOMA

The Story Keeper

The Sonoma was designed for generations to gather, grow, and create the moments that become a family's tradition. Thoughtfully designed with flexible living spaces and adaptable room configurations, the Sonoma can expand to up to six bedrooms.

With the option to convert the family room into a second primary suite, Sonoma creates a rare opportunity for true multi-generational living under one roof.

❖ **Optional Private Suite**

Convert the family room into a private suite designed for multi-generational living.

❖ **Family Room with Optional Wet Bar**

A relaxed secondary living space ideal for entertaining or movie nights.

❖ **Formal Dining & Casual Breakfast Nook**

Dedicated dining spaces for both everyday meals and memorable gatherings.

❖ **Flexible Living Spaces**

Convert the dining room into another bedroom or the breakfast nook into a work room.



LIVING ROOM W/ FIREPLACE & CABINET OPT

HIGHLIGHTS

- 2,892 - 3,031 Sq.Ft.
- 4 - 6 Bedrooms
- 3 - 4 Baths
- 3-Car Garage

AVAILABLE ELEVATIONS



FARMHOUSE

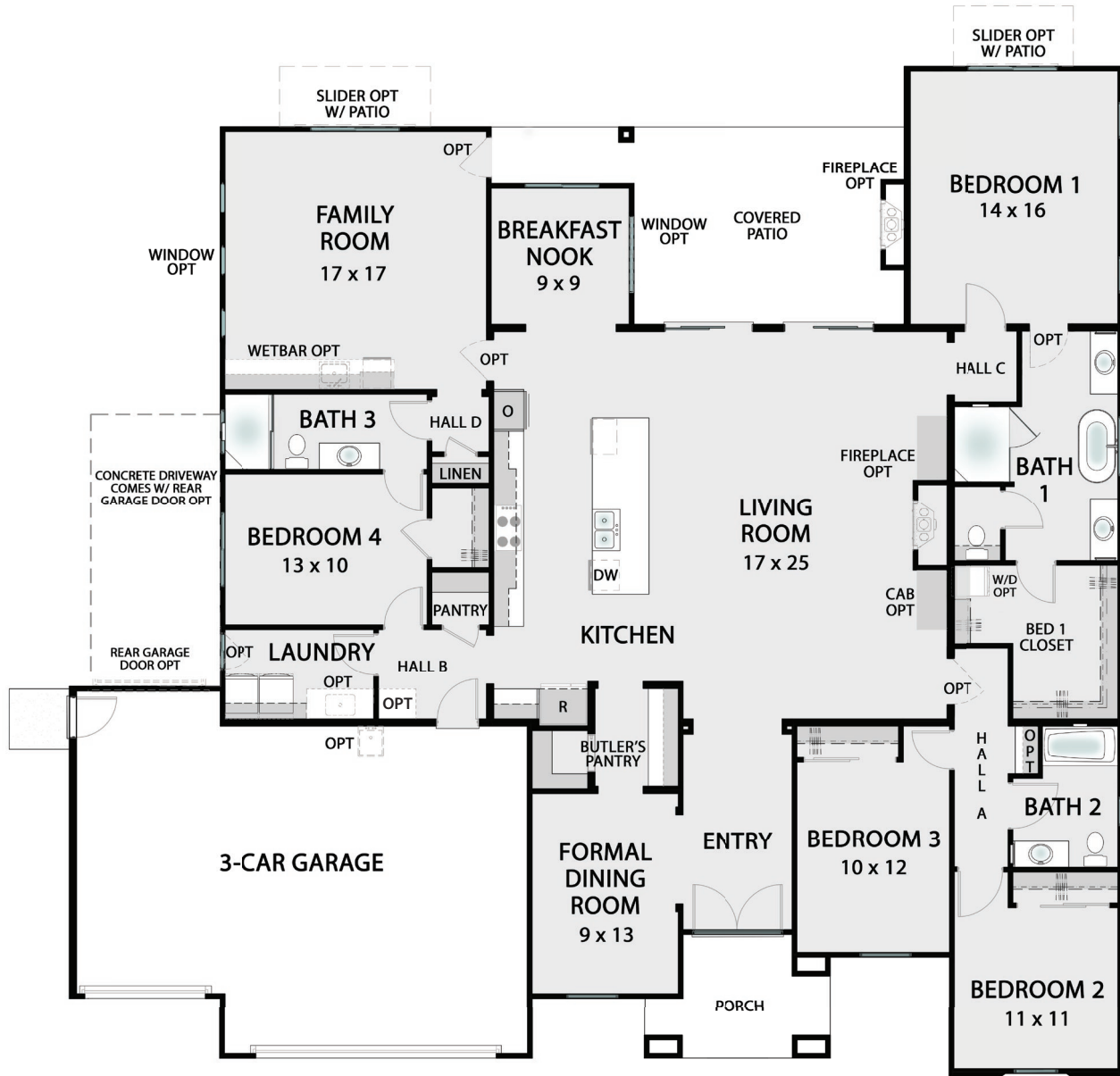


SPANISH



CONTEMPORARY

SONOMA FLOORPLAN



Flexible Spaces

With adaptable rooms and layout options, Sonoma can expand to up to 6 bedrooms, creating space for growing families.



KITCHEN

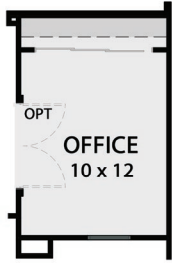


FAMILY ROOM W/ WETBAR

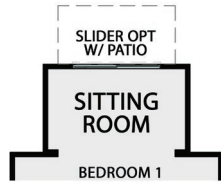
2,892 SQ.FT. | 4 BEDROOMS | 3 BATHS | 3-CAR GARAGE

Designed for Generations

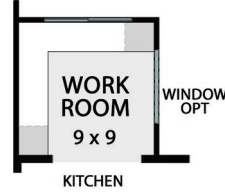
Customize Your Sonoma



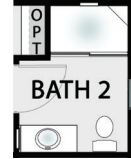
OFFICE OPT
IN LIEU OF
BEDROOM 3



SITTING ROOM OPT
IN BEDROOM 1
[+60 SQ.FT.]



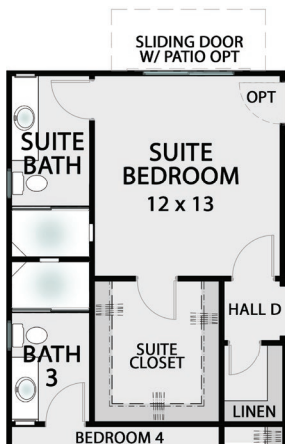
WORK ROOM OPT
IN LIEU OF
BREAKFAST NOOK



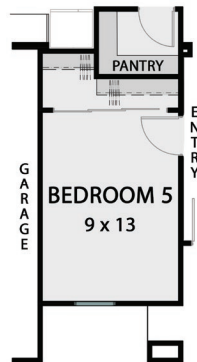
SHOWER OPT
IN BATH 2



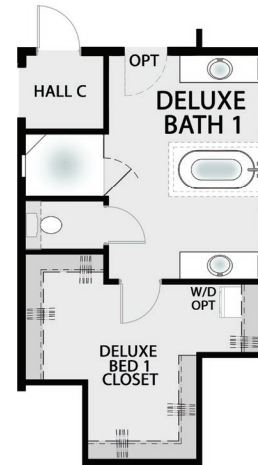
POCKET PATIO DOOR OPT
AT FAMILY ROOM



SUITE BEDROOM OPT
IN LIEU OF FAMILY ROOM



BEDROOM 5 OPT
IN LIEU OF FORMAL
DINING ROOM AND
BUTLER'S PANTRY



DELUXE BATH 1
[+79 SQ.FT.]



SITTING ROOM OPTION

Virtual Walkthrough



BUILDER RESERVES THE RIGHT TO MODIFY PLANS, ELEVATIONS, FEATURES AND SPECIFICATIONS WITHOUT NOTICE. ALL FLOORPLAN DIMENSIONS ARE ESTIMATES.

**Where everyone
comes together.**



The Tacoma

3,064 Sq.Ft. | 4 Bedrooms | 3 Baths | 3-Car Garage

TACOMA

The Family Estate

The Tacoma is the largest and most luxurious home in the Vista Montaire collection. Designed to capture the surrounding hilltop views, expansive living spaces and outdoor entertaining areas make the most of the community's elevated setting.

With the widest range of customization options including a pool bath, wet bar, and additional living spaces, the Tacoma offers a home that truly reflects everything you've worked for.

❖ **Designed for the Views**

Living spaces and outdoor patios positioned to capture sweeping hilltop vistas.

❖ **Entertainer's Kitchen & Wet Bar**

A chef-inspired kitchen and optional wet bar create the perfect setting for hosting.

❖ **Expansive Indoor-Outdoor Living**

Patios and gathering spaces extend the home outdoors for entertaining and relaxation.

❖ **Ultimate Flexibility**

Options for a fifth bedroom, bonus room, or work room allow the home to adapt to your lifestyle.



HIGHLIGHTS

- 3,064 - 3,395 Sq.Ft.
- 3 - 5 Bedrooms
- 3 - 5 Baths
- 3-Car Garage

AVAILABLE ELEVATIONS



FARMHOUSE

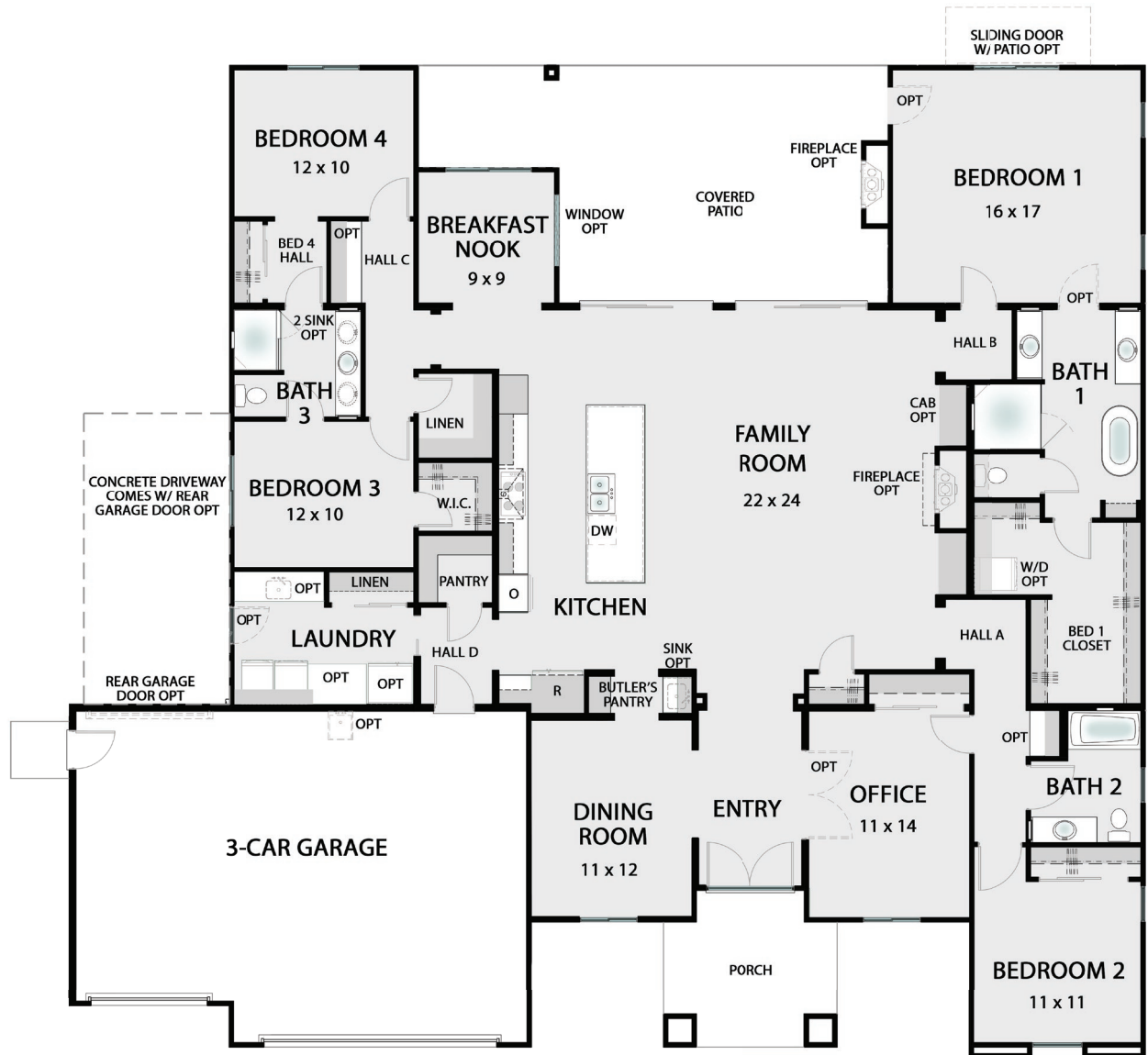


SPANISH



CONTEMPORARY

TACOMA FLOORPLAN



OPEN-AIR LIVING

Expansive gathering spaces connect effortlessly to outdoor living areas designed for relaxed entertaining.



KITCHEN



BEDROOM 1

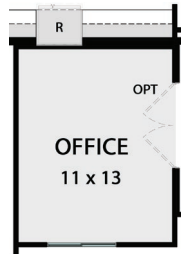
3,064 SQ.FT. | 4 BEDROOMS | 3 BATHS | 3-CAR GARAGE

Designed for Luxury

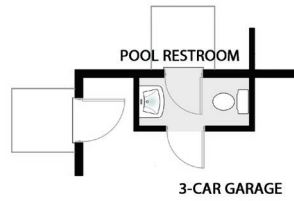
Customize Your Tacoma



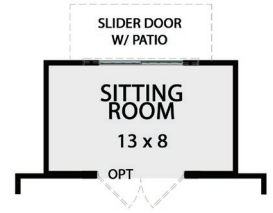
BEDROOM 5 OPT
IN LIEU OF
OFFICE



OFFICE OPT
IN LIEU OF
DINING ROOM



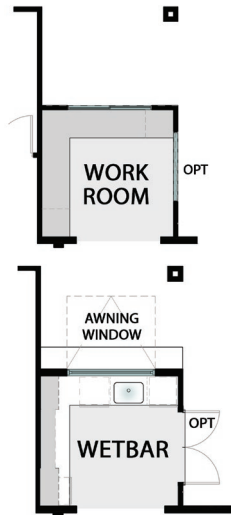
**POOL
RESTROOM OPT**
[+29 SQ.FT.]



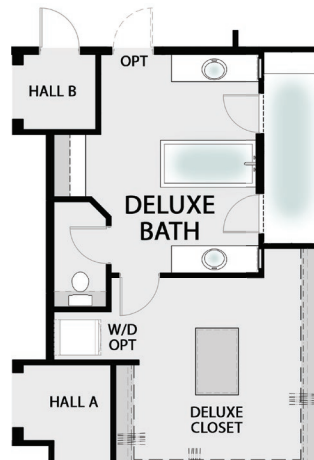
SITTING ROOM OPT
IN BEDROOM 1
[+109 SQ.FT.]



BONUS ROOM OPT
IN LIEU OF BED 4 &
BREAKFAST NOOK
[+68 SQ.FT.]



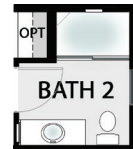
**WORK ROOM OR
WETBAR OPT**
IN LIEU OF
BREAKFAST NOOK



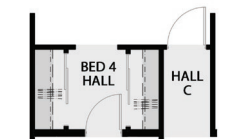
DELUXE BATH OPT
[+154 SQ.FT.]



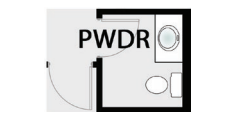
**POCKET PATIO
DOOR OPT**
IN FAMILY ROOM



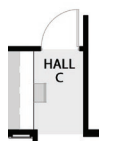
SHOWER OPT
IN BATH 2



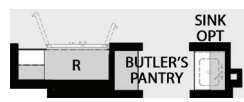
CLOSET OPT
AT BEDROOM 4



POWDER OPT
IN LIEU OF LINEN



DESK OPT
AT HALL C



**42" REFRIGERATOR
OPT**

Virtual Walkthrough



Signature Features

Architectural Exteriors

- Distinctive exterior elevations
- Designer-coordinated color palettes
- Durable concrete tile roofing
- Covered entry porches
- Professionally landscaped front yards with irrigation

Interior Design

- Spacious and thoughtfully designed floor plans
- Volume or raised ceilings
- Specially tailored interior finishes
- Modern flat baseboards and designer doors
- Hand-textured drywall with square corners

Chef's Kitchen

- Oversized island with seating
- Quartz countertops
- Factory-finished cabinetry with concealed hinges
- Walk-in pantry or generous pantry storage
- Decorative hood with tiled backsplash
- Optional double oven

Deluxe Primary Bath

- Quartz countertops with matching backsplash
- Designer vanity cabinetry with concealed hinges
- Fully tiled spa-style showers
- Curated bath fixtures and hardware

Connected Living

- Media outlets throughout main living spaces
- Hardwired smoke and carbon monoxide detectors
- Optional security alarm system

Energy Efficiency

- Dual-pane windows and sliding doors with Low-E glass
- High-efficiency electric heating and air conditioning
- Energy Efficient Appliances
- Solar energy system
- Prewired for electric vehicle charger

Looking for something more?

A variety of options and upgrades are available to personalize your home. Ask your Vista Montaire representative for details.

Every Home Tells a Story

You contribute to that story with the memories you make each day. From the pictures you hang on the walls to the marks left on the floors, your home becomes a reflection of who you are; your values, your traditions, and the moments that shape your family's life. Your home becomes the place where generations gather, legacies grow, and stories live on.

Vista Montaire is where your next chapter begins.

As the builder of your home, it is our honor to play a part in that story. From the first sketch to the colors on the walls, your home was created by our team, our family, who share a genuine passion for thoughtful design and truly livable spaces.

The rest of the story belongs to you.

Our Story

Since 1985, S&S Homes has helped thousands of families build homes designed for the way they live. As a family-owned and operated company, we take pride in creating homes that combine thoughtful design, quality craftsmanship, and lasting value.

Our commitment to service begins before you purchase and continues long after you move in. From construction to customer care, our team works together like one family, and when you purchase a home with S&S, you become part of that family.

Welcome to the S&S family.

Welcome home.



VISTA MONTAIRE

RISE ABOVE



*Contact Us to Schedule
A Private Tour*

661-466-4263

vistamontaire@sshomes.net

www.sshomes.net



License #507396




RESOCO
DRE# 02133568