

MSP STAR NEWS

Winter 2026
Edition

COACH UPDATE

In this year we have had some hardships that are closer to home. Our MSP Stars family has truly stepped up to the plate to help all players, coaches and families and it shows.

In October 2025, Coach Sarah's husband Andrew fell incredibly ill. At one point, Sarah, Meredith and Olivia thought that they were going to lose Andrew. It was touch and go for a long time. Happy to report Andrew is now home, but still has a long recovery ahead. Coach Sara has this to add to our Stars Family.

To my incredible Stars family, I don't even know how to put into words what your prayers, support, and well wishes have meant to me, Andrew, Olivia and Stinger. These past several weeks have been overwhelming in ways I never expected, but your love has been one of the strongest lights guiding me through. I've tried to finish this message so many times, but every time I start, the emotions hit me all over again – that's how much your kindness has meant to me.

Every message, every call, every thought – I have felt each one deeply. Your support has wrapped around me in the moments I needed it most, and I am truly, completely overwhelmed with gratitude. You've reminded me that this team is so much more than players on a field and families on the sidelines... we are a family. A real, rare kind of family that lifts each other up, stands shoulder to shoulder, and shows up with a kind of love that is hard to find anywhere else.

There is something so special about us – the way we grow together, fight for one another, and become one heartbeat. I am humbled by the way you've carried me with your strength, your compassion, and your unwavering support for our family and our girls who have remained incredibly strong during this crushing time.

Thank you, from the deepest part of my heart, for being there for me. I am so incredibly blessed to have each and every one of you in my life.-Coach Sarah

Again October 2025, Karen, Coach Eric's (Head Coach of 13U Black) right hand was diagnosed with breast cancer. Coach Eric and Karen have two players in our program, Elyse (13U Black) and Kiera (12U Orange). As a family they are fighting cancer head on. After chemo, Karen has rang the bell on March 16, 2026. Karen is a force to be reckoned that is for sure. While Karen has been in chemo she has still been going to games, recording games and was one of our MC for trivia night. Cancer is not slowing her down and she is fighting with a smile on her face.

In honor of Karen, Coach Rich Willix has stickers that our entire program will place on our helmets saying #KL Strong. Karen is one heck of a fighter and keep battling on. Karen and the entire Beck family your Stars family is behind you 1,000%!!!

In February 2026 Coach Alexis, our head 13/14U White team starting to have severe headaches. After our midnight Round Robin, Alexis ended up in the hospital after losing consciousness. Right now she has been on a high does of steroids as there is pressure build up behind her eyes. Towards the end of April they are hoping the swelling does decrease, if not they may need to try other treatments that may require surgery. Coach Kyle has stepped up for 13/14U White in Coach Alexis absence. We are supporting coach Alexis and keeping in our prayers for a quick recovery as we do miss her dearly.

Coach Katie Korner

It has been too long since our last newsletter. Sorry have been behind, but putting in work with all our players have been worth it. January and February we were getting our High Schoolers ready for this Spring season with overnights at the dome. Players played some tough competition coming out strong right out the gate. We have 40 players that are playing High School Ball. With the weather becoming nice it would be awesome to see our players in action. Schools schedules are on their website or can be found in Game Changer. Be sure to take pictures and post, especially if players play each other! Nice to see all our players in action. High Schools are players are playing for are as followed;

**Bartlett * Glenbard North * Naperville North
Batavia * Hampshire * South Elgin * Lake Park
Benet *Wheaton Academy * St Charles East
Dundee Crown * Leyden * St. Charles North * York
Glenbard East * Meta Valley * St. Francis
Wheaton North * West Chicago
Wheaton Warrenville South**

Team Updates

11U White

The girls played a scrimmage game at Bison and showed what they have been working on this Winter. Coach Joe and Coach Matt have implemented pitching calls along with bunt coverages so players are working with the rest of our program. Pitching has been on point and solid bats to help score runs. As a team they attended a Camp at DTA for the girls. 3-hour camp with a lot of reps and making up for some missed winter practices due to scheduling. Their first outdoor game will be home this Saturday, April 11, 2026 at 10am.

12U Black

The girls have been working hard on footwork and simple mechanics when it comes to the game. Practices have been a little lite due to other sports, injuries, but the players that have showed up consistently you can see the progress. Coach Katie has seen arm strength from these girls that can really help win some ball games. 12U Black will be competing in Carol Stream Spring League that starts toward the end of April. They play this weekend in two Round Robins. We are all excited to get playing and pray the weather holds up.

12U Orange

We are trying to build a team environment. Coach Rich is having them talk as one unit and be a great teammate to each other. As for the game itself, the team is really working on the fundamentals of in fielding and the outfield. We like to modify the 4-corner drill with sundown's, and different commands, like reverse, cross, flip only, ground ball only, etc. It keeps the kids on their toes in hopes to help them not misfire during an intense bang band play. As for hitting, we have a lot of sweepers, as I call it. They drop their shoulders and sweep the floor with their bat. We have been using the surf boards, I don't know what they are called. As well as a few other drills too. Make sure each kid is not dropping their shoulder. You can see each player has been improving and hitting harder and more accurate hits.



13U White

Tough to have a lot of girls due to multi-sport athletes and church conflicts. Working on trusting their skills rather than thinking too much about it. Having confidence in making their own calls and then discussing mistakes or different plays. Winter team outing at TopGolf was fun for the girls. Went over 9 players goals from Fall to now and shows promise for the months ahead. With all 9 of the girls biggest thing to discuss ways to trust each other off the field. The team wants to congratulate their three high school players for making their high school teams. We will be rooting for you for sure! With Coach Alexis out, Coach Kyle has stepped into play. The first game was not in the win column like we wanted, but shows what work needs to be done. Subbing opportunities with 13U Black have helped fill some void in spots needed.

13U Black

Went outside before our April 1st practice. Was nice to see the growth from the winter despite players missing from other sports. Footwork was key, arms were strong and trusting the process was for sure felt from that day. 13U Black will be competing in the Southwest Suburban League this Spring and Summer. We are really needing full team to be there to get practice and games under way efficiently. We are asking that players send in birth certificates to Coach Eric so he can upload on the website. The team has been showing more bats in hitting on Thursdays as well. Making contact each at bat is critical to seeing the ball and providing more power throughout the swing. Coach Eric is itching to get outside and show what we have worked on all Winter long!

MSP Stars Spring/Summer Store

This will be our last store for the 2025-2026 season. There are Spring and Summer items to choose from. Order your swag TODAY!

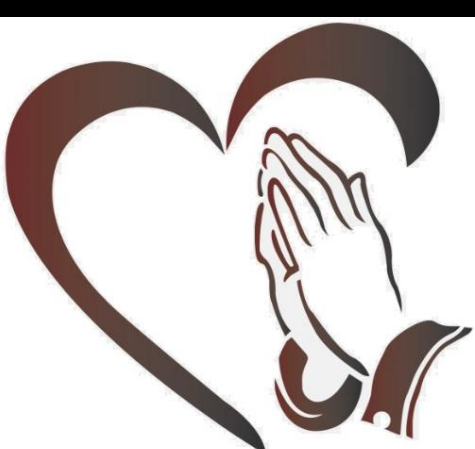
AD CRAFT
CUSTOM APPAREL & MERCH

MSP STARS
SOFTBALL

MSP STARS SOFTBALL
SPRING 2026

STORE OPENS APR. 8TH » **STORE CLOSSES APR. 15TH** » **EST. SHIP MAY. 4TH**

www.adcraftwebstores.com/MSS526



SUPER BOWL SQUARES



Thank you to everyone that sold squares. Our pins have been ordered and this year they will not disappoint. The picture of the pin is on the left. The Star logo is a spinner as well, which will be a great addition in the pin trading. For those of you that are new this year, pins are traded when we are in Nationals. The first day is usually a skills competition and the girls exchange pins in between each skill. Gives the girls a great chance to talk and see who has the best pins!

MSP STARS TRIVIA NIGHT

This trivia night DID NOT disappoint. Thank you

11U White - Kristin Syoen 12U Black - Val Cohn 12U Orange - Laura Bothwell
 13U Black - Erin Kolak 13/14U White - Kayla Larson 14U Orange - Amanda Vihnanek
 16U - Barb McHaley, Laura Robinson, Sheila Pradzinski
 Silent Action - Rich Willix

MC for the evening - Eric Beck and Karen Lapa

THANK YOU to all the parents and friends who came out, had a blast and raised money for MSP Stars. This was a night that was fun, entertaining and mingled with parents from all different teams. Thank you again for your support!

April 2026 Schedule

Below are the schedules that are in Playmetrics for the month of April. Hitting practices may change for games so please ensure you are reviewing Playmetrics for those changes. Fielding practice will be at Reed Keppler. We typically have fields 1, 2, 3 and 4. When players come to practice please use one dugout, place bags on the back of the dugout and this get ready to go. If a player is running late, no worries, just text the coach and let them know. 5pm start time is rough, but for the month of April daylight savings time is not on our side.

If you ever have any questions about practice due to this link.

<https://rainoutline.com/search/dnis/6302257876>. The park district has stated they will update the link by 3pm that day.

MSP Hitting Schedule

SUNDAY	MONDAY	TUESDAY	WEDNESDAY	THURSDAY	FRIDAY	SATURDAY
			1	2 13U Black 6-7pm 13U White 7-8pm	3 12U Black 7-8pm	4
5	6 12U Orange 5:30-6:30pm 6:30-7:30pm	7 11U White 5-6pm 6-7pm 12U Black 7-8pm	8	9 13U Black 6-7pm 13U White 7-8pm	10	11
12	13 12U Orange 5:30-6:30pm 6:30-7:30pm 12U Black 6:30-7:30pm	14 11U White 5-6pm 6-7pm	15	16 13U Black 6-7pm 13U White 7-8pm	17	18
19	20 12U Orange 5:30-6:30pm 6:30-7:30pm 12U Black 6:30-7:30pm	21 11U White 5-6pm 6-7pm	22	23 13U Black 6-7pm 13U White 7-8pm	24	25
26	27 12U Orange 5:30-6:30pm 6:30-7:30pm	28 11U White 5-6pm 6-7pm	29	30 12U Black 5-6pm 13U Black 6-7pm 13U White 7-8pm		

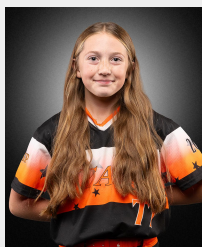
MSP Fielding Schedule

SUNDAY	MONDAY	TUESDAY	WEDNESDAY	THURSDAY	FRIDAY	SATURDAY
			1 11U White 12U Black 12U Orange 13U Black 13U White Reed Keppler 5-7pm Fields 1-4	2	3	4
5	6	7	8 11U White 12U Black 12U Orange 13U Black 13U White Reed Keppler 5-7pm Fields 1-4	9	10	11
12	13	14	15 11U White 12U Black 12U Orange 13U Black 13U White Reed Keppler 5-7pm Fields 1-4	16	17	18
19	20	21	22 11U White 12U Black 12U Orange 13U Black 13U White Reed Keppler 5-7pm Fields 1-4	23	24	25
26	27	28	29 11U White 12U Black 12U Orange 13U Black 13U White Reed Keppler 5-7pm Fields 1-4	30		

MSP STARS OF THE WINTER

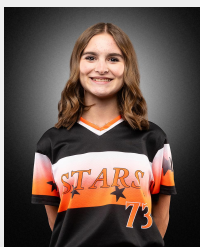
Every month, all the coaches meet for our monthly coaches meeting. We go over games, practices, team activities etc. The biggest item to talk about is the MSP Star of the Month. These players are not always the ones that hit the game winning runs, pitch the most strikes or even throw the hardest. These players are the ones that stand out with their attitude, effort and team spirit. We honor these players each and every month. Each STAR of the Month will receive a STAR necklace for the month. As I have fallen behind on the newsletter we have decided to post MSP STARS of Winter. They are as followed.

MSP STAR
Player of WINTER
RUBY FULTON
TEAM: 11U White
POSITION: Infielder
GRAD YEAR: 2032



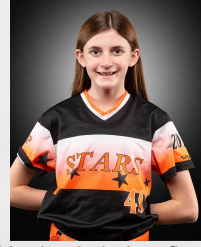
REASON FOR PofM: Ruby is in her second year as an MSP Star. According to Coach Joe and Coach Matt, Ruby works her butt off every practice to get better and better. She is super competitive and encourages and is a great teammate. For these reasons and so much more, Ruby is awarded MSP Star, player of the WINTER!

MSP STAR
Player of WINTER
MALIA SALIS
TEAM: 12U Black
POSITION: Utility
GRAD YEAR: 2031



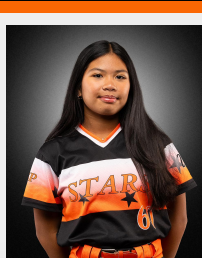
REASON FOR PofM: Malia is in her first year as an MSP Star. According to Coach Katie, Malia has made some tremendous progress with the team. She is stepping up to be our first basemen and is starting to open up her teammates. For these reasons and so much more, Malia is awarded MSP Star, player of the WINTER!

MSP STAR
Player of WINTER
HAYLEY BUSCH
TEAM: 12U Orange
POSITION: Utility
GRAD YEAR: 2031



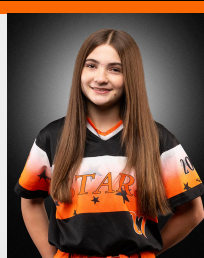
REASON FOR PofM: Hayley is in her first year as an MSP Star. According to Coach Rich, Hayley shows up and committed to her team. She has made just about all fielding and hitting practices throughout Winter and working hard to improve every time. For these reasons and so much more, Hayley is awarded MSP Star, player of the WINTER!

Honorable Mention STARS OF WINTER:
 Andie Robinson (16U)
 Morgan Kersbergen (12U Black)



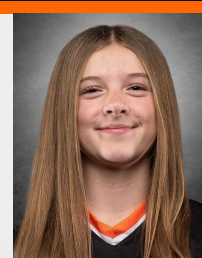
MSP STAR
Player of WINTER
JAZ RABACCA
TEAM: 13U White
POSITION: Infielder
GRAD YEAR: 2030

REASON FOR PofM: Jaz is in her first year as an MSP Star. According to Coach Kyle, Jaz shows great knowledge of the game. Working on being a captain and taking leadership of the team. Her stick and glove help the team shine. She is a great teammate and liked by all. For these reasons and so much more, Jaz is awarded MSP Star, player of the WINTER!



MSP STAR
Player of WINTER
ASHLYN KOLAK
TEAM: 13U Black
POSITION: Pitcher
GRAD YEAR: 2030

REASON FOR PofM: Ashlyn is in her second year as an MSP Star. According to Coach Eric, Ashlyn shows up for practices, works hard to improve and asks questions to improve her craft. She is willing to step in for her team where ever she is needed. For these reasons and so much more, Ashlyn is awarded MSP Star, player of the WINTER!



MSP STAR
Player of WINTER
MAGGIE VOLK
TEAM: 14U Orange
POSITION: Utility
GRAD YEAR: 2030

REASON FOR PofM: Maggie is in her fourth year as an MSP Star. According to Coach Bree and Coach Nate, Maggie just lightens up a team. Her whit, laugh and smile calms all her players down. Don't let the smile fool you as she means business to win, but with fun! For these reasons and so much more, Maggie is awarded MSP Star, player of the WINTER!