

PROJECT II AT STAGECOACH

A SUBDIVISION OF A PORTION OF PROJECT I
AT STAGECOACH
ROUTT COUNTY, COLORADO

NELSON, HALEY, PATTERSON & QUIRK
ENGINEERING CONSULTANTS

CERTIFICATE OF DEDICATION AND OWNERSHIP

KNOW ALL MEN BY THESE PRESENTS THAT THE WOODMOOR CORPORATION, DALE D. WHEELER, VICE-PRESIDENT AND JOHN J. WILKINSON, SECRETARY, MOUNTAIN AIR COMPANY, BURDETTE A. OGLE, PRESIDENT, AL SATERDAL, SECRETARY AND S.L. PIEPER, HOLDER OF DEED OF TRUST, BEING THE OWNERS OF CERTAIN LANDS IN ROUTT COUNTY, STATE OF COLORADO DESCRIBED AS FOLLOWS:
BEGINNING AT THE SOUTHEAST CORNER OF SECTION 1, TOWNSHIP 3 NORTH, RANGE 85 WEST OF THE 6TH PRINCIPAL MERIDIAN AND CONSIDERING THE SOUTH LINE OF SAID SECTION 1 TO BEAR NORTH 00°00'00" WEST AND WITH ALL OTHER BEARINGS CONTAINED HEREIN BEING RELATIVE THERETO:

THENCE NORTH 80°00'00" WEST ALONG THE SOUTH LINE OF SAID SECTION 1, 330 FEET;
THENCE NORTH 00°00'00" EAST, 910.00 FEET;
THENCE NORTH 90°00'00" EAST, 324.99 FEET;
THENCE SOUTH 00°00'00" WEST, 407.63 FEET;
THENCE NORTH 90°00'00" EAST, 640.40 FEET;
THENCE SOUTH 00°00'00" WEST, 400.00 FEET;
THENCE SOUTH 76°00'00" WEST, ALONG THE SOUTH LINE OF SECTION 6, TOWNSHIP 3 NORTH, RANGE 84 WEST OF THE 6TH PRINCIPAL MERIDIAN, 660.00 FEET TO THE POINT OF BEGINNING;

AND CONTAINING 13.041 ACRES MORE OR LESS, HAVE BY THESE PRESENTS LAID OUT, PLATTED AND SUBDIVIDED THE SAME INTO LOTS AND BLOCKS AS SHOWN ON THIS PLAT, UNDER THE NAME AND STYLE OF PROJECT II AT STAGECOACH, AND DO HEREBY GRANT TO THE COUNTY OF ROUTT, STATE OF COLORADO, FOR THE USE OF THE PUBLIC, THE AVENUES, STREETS, DRIVES, COURTS AND PLACES HEREON SHOWN, ALSO THE EASEMENTS ARE RESERVED AS SHOWN FOR PUBLIC UTILITY PURPOSES AND DRAINAGE.

EXECUTED THIS 14th DAY OF March, A.D. 1972

THE WOODMOOR CORPORATION
DALE D. WHEELER, VICE-PRESIDENT
JOHN J. WILKINSON, SECRETARY

MOUNTAIN AIR COMPANY (LIMITED PARTNERSHIP BY OGLE CORP)
AL SATERDAL, SECRETARY
BURDETTE A. OGLE, PRESIDENT

ATTEST:
S.L. PIEPER, HOLDER OF DEED OF TRUST

STATE OF COLORADO
COUNTY OF EL PASO
THE FOREGOING DEDICATION WAS ACKNOWLEDGED BEFORE ME THIS 15 DAY OF March, A.D. 1972 BY THE WOODMOOR CORPORATION, DALE D. WHEELER, VICE-PRESIDENT AND JOHN J. WILKINSON, SECRETARY, MOUNTAIN AIR COMPANY, BURDETTE A. OGLE, PRESIDENT, AL SATERDAL, SECRETARY AND S.L. PIEPER, HOLDERS OF DEED OF TRUST.
WITNESS MY HAND AND OFFICIAL SEAL
MY COMMISSION EXPIRES: October 21, 1975

Notary Public Seal: Brett A. Brock

SURVEYOR'S CERTIFICATE

I, Gerald B. McRae, A REGISTERED LAND SURVEYOR IN THE STATE OF COLORADO, DO HEREBY CERTIFY THAT THERE ARE NO ROADS, PIPELINES, IRRIGATION DITCHES OR OTHER EASEMENTS IN EVIDENCE OR KNOWN TO ME TO EXIST ON OR ACROSS SAID PROPERTY EXCEPT AS SHOWN ON THIS PLAT. I CERTIFY THAT I HAVE MADE THE SURVEY REPRESENTED BY THIS PLAT AND THAT THIS PLAT ACCURATELY REPRESENTS SAID SURVEY. STEEL PINS WERE SET AT ALL BOUNDARY CORNERS.

Gerald B. McRae
Gerald B. McRae Registered Land Surveyor and
Professional Engineer, Colorado Reg. No. 6616

APPROVAL OF PLANNING COMMISSION

APPROVED BY THE ROUTT COUNTY PLANNING COMMISSION THIS 16th DAY OF March, A.D. 1972 BY
Chairman

APPROVAL BY BOARD OF COUNTY COMMISSIONERS

THE WITHIN PLAT OF PROJECT II AT STAGECOACH IS APPROVED FOR FILING THIS 3rd DAY OF April, A.D. 1972. THE DEDICATION OF THE PUBLIC WAYS SHOWN HEREON ARE ACCEPTED BY THE COUNTY OF ROUTT, STATE OF COLORADO SUBJECT TO THE CONDITION THAT SAID COUNTY SHALL UNDERTAKE THE MAINTENANCE OF SAID PUBLIC WAYS ONLY AFTER CONSTRUCTION OF SAID PUBLIC WAYS HAS BEEN SATISFACTORILY COMPLETED TO THE SPECIFICATIONS BY THE SUBDIVIDER AND A RESOLUTION OF THE BOARD OF COUNTY COMMISSIONERS OF ROUTT COUNTY, COLORADO, ACCEPTING THE SAME HAS BEEN ADOPTED AND PLACED ON RECORD.

ATTEST: County Clerk
BY: Chairman
BOARD OF COUNTY COMMISSIONERS
ROUTT COUNTY, COLORADO

RECORDER'S CERTIFICATE

THIS PLAT WAS FILED FOR RECORD IN THE OFFICE OF THE COUNTY CLERK AND RECORDER OF ROUTT COUNTY, AT STAGECOACH ON THE 4th DAY OF April, A.D. 1972, IN CASE NO. DRAWER NO. RECEPTION NO.

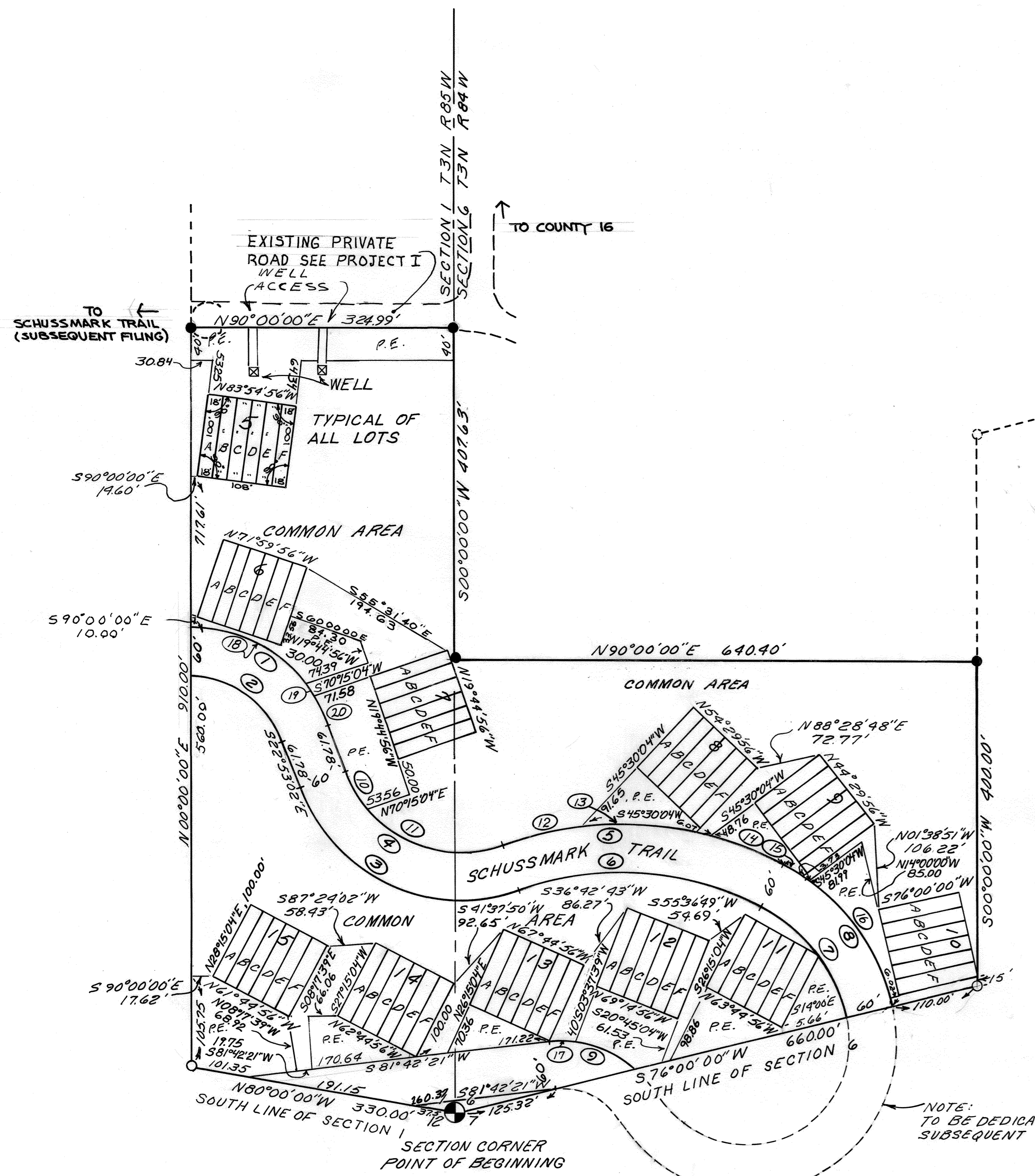
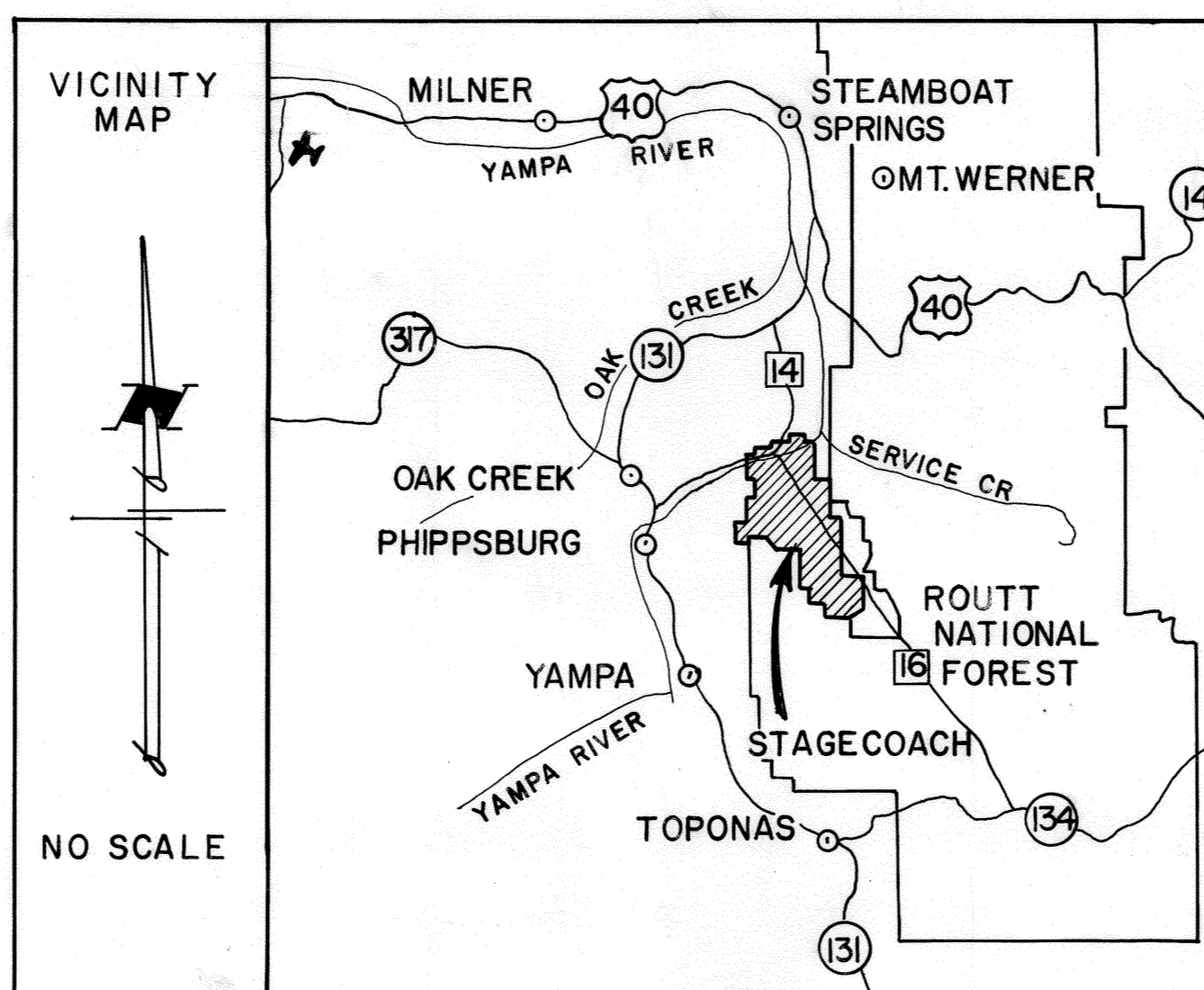
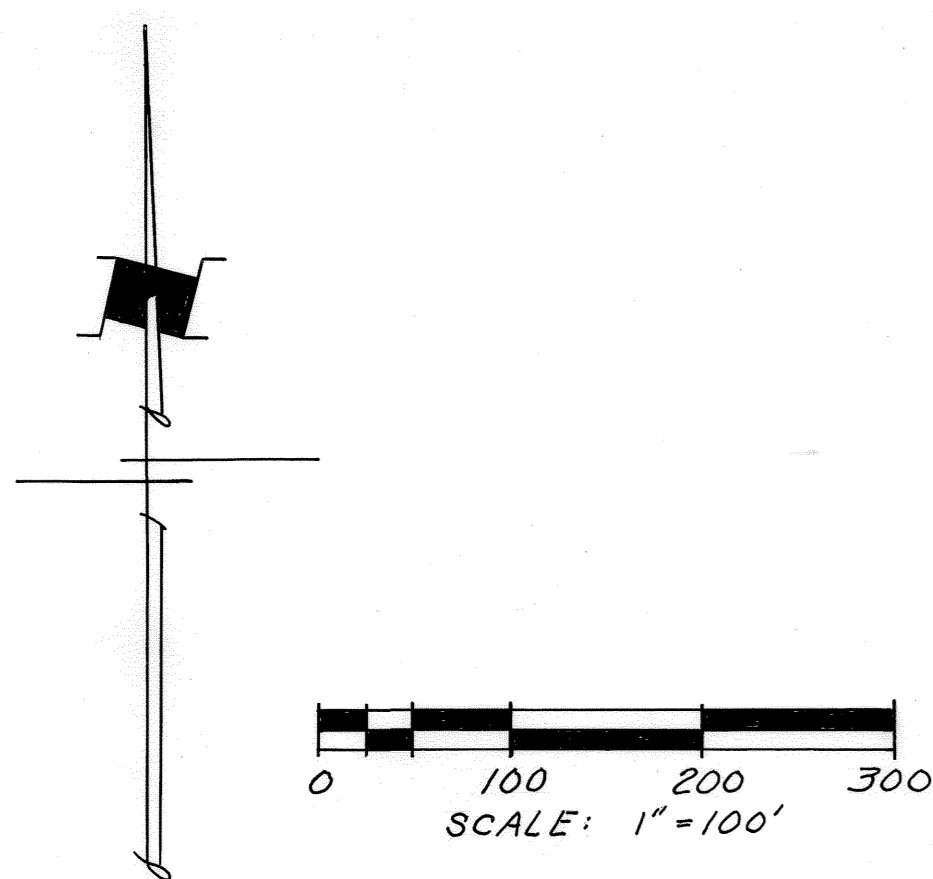
COUNTY CLERK AND RECORDER

ATTORNEY'S CERTIFICATE

I, JOHN S. WILKINSON, AN ATTORNEY-AT-LAW, DULY LICENSED IN THE STATE OF COLORADO, DO HEREBY CERTIFY THAT I HAVE EXAMINED THE TITLE OF ALL LAND HEREIN ABOVE PLATTED AND SHOWN UPON THE WRITTEN PLAT AND THAT TITLE TO SUCH LAND IS IN THE DEDICATORS.

DATED THIS 15th DAY OF March, A.D. 1972

Attorney-at-Law Seal: John S. Wilkinson



ARC L	DELTA	RADIUS
1	219.91	70'00"00"
2	146.61	70'00"00"
3	329.87	90'00"00"
4	235.62	90'00"00"
5	356.98	97'30"00"
6	306.74	97'30"00"
7	177.76	48'30"00"
8	228.55	48'30"00"
9	120.45	16'07"08"
10	55.51	21'12"04"
11	180.12	68'47'56"
12	106.60	14'12'14"
13	122.38	16'18'25"
14	69.50	09'15'40"
15	49.84	10'34'36"
16	178.71	37'55'24"
17	29.31	11'55'18"
18	160.42	51'03'46"
19	11.38	03'37'26"
20	38.42	12'13'46"

NOTE: TO BE DEDICATED IN SUBSEQUENT FILING.
NOTE: P. E. = PARKING EASEMENT AND ACCESS