

Applied Science CTEC

Course overview

How are microorganisms used to make products for everyday life? How would you set about designing a new lab? Is it better to use technology or traditional lab methods for quantitative analysis? How would you test a new product to ensure it meets legislative requirements?

The World of science careers is one that asks all sorts of questions, and through the Applied science extended certificate, you will develop skills and knowledge to think about the big questions that STEM professionals tackle every day.

Exam / Coursework

Students complete 5 units, 2 exam based and 3 internally assessed through practicals.

Qualification gained

An Extended Certificate in Applied Science Level 3 after 2 years of study.

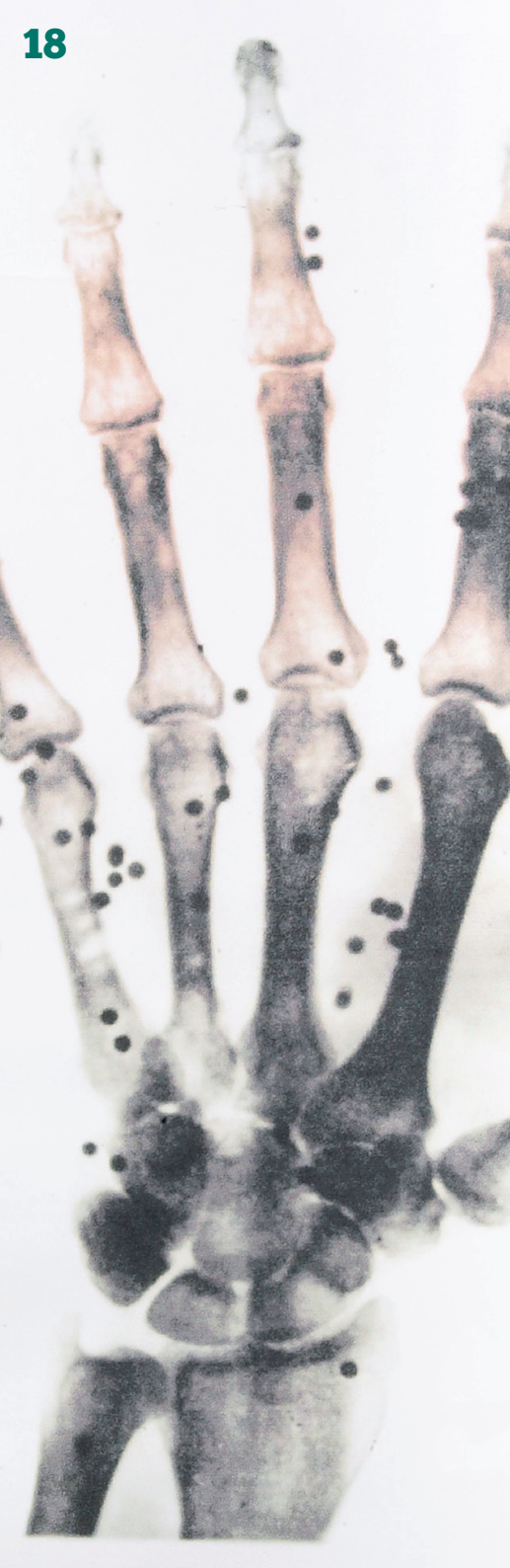
EDEXCEL - www.edexcel.com

Entry requirements

5 GCSE subjects at a grade 4 or above, which must include a GCSE in a Science.

Career opportunities

This course can lead to careers such as midwifery, radiography, nursing, engineering, forensic science and veterinary assistant. It also provides the skill set needed to make a success in higher education.



Biology

Course overview

The biology course we offer provides a wonderful overview that prepares students for taking biology to the next academic level. The course covers a range of topics from the micro, such as cell structure, genetics and immunology, to the macro where we will critically look at world-renowned concepts such as the theory of evolution. The course will challenge students on every level, whether it is a matter of problem-solving and practical application, or whether it is about developing your skills as a communicator of science. If you want to understand the origins of life and where life might be heading, biology is the perfect choice for you.

Exam info

Three 2 hour exams. You also have to show competency in practical skills, fulfilling the CPAC criteria.

Qualification gained

A-Level in Biology
AQA - www.aqa.org.uk

Entry requirements

5 x 4-9 grades at GCSE including 2 x 6 grades in combined science or biology and one other science and a 6 grade in maths.

Career opportunities

Medicine | Dentistry | Veterinary Science
| Physiotherapy | Pharmacology |
Optometry | Nursing | Midwifery | Marine
Biology | Forensic Science | Scientific
Journalism | Teaching

Chemistry

Course overview

If you loved chemistry at GCSE, then this course is for you. You will get real in-depth knowledge of this fascinating subject, preparing you for further education or giving you the credentials to enhance your job options straight away. Chemists have greatly improved the quality of life for the majority of people. Our A-Level course is underpinned by the practical skills that we call 'How Science Works'. You also find out how chemists are real innovators, designing solutions to the problems that affect modern life.

Exam info

A-Level: three 2 hour written papers.

Qualification gained

A-Level in Chemistry
AQA - www.aqa.org.uk

Entry requirements

5 x 4-9 grades at GCSE including 2 x 5 (6 preferred) grades in combined science or chemistry and one other science and a 5 (6 preferred) grade in maths.

Career opportunities

Industrial Chemistry | Medicine | Dentistry | Veterinary Science | Chemical Engineer | Pharmacology | Nursing | Midwifery | Marine Biology | Forensic Science | Scientific Journalism | Teaching

"It has been a very interesting year for me and the chemistry lessons have most certainly changed my approach to chemistry. I am convinced the knowledge I have gained will prove very useful in the future."

First Year Student

Health & Social Care

Course overview

The Cambridge Technicals in Health and Social Care has been developed to meet the changing needs of the sector, and prepare students for the challenges they'll face in higher education or employment. Designed in collaboration with experts spanning the breadth of the sector, the Cambridge Technicals in Health and Social Care focuses on the skills, knowledge and understanding that today's universities and employers demand.

Exam / Coursework

3 exams and 3 pieces of coursework over the two years.

Qualification gained

Cambridge Technical Level 3 Extended Certificate in Health and Social Care.

OCR - www.ocr.org.uk

Entry requirements

5 GCSE's at grade 4 or above to include Science and English.

Career opportunities

Studying this course can lead to a variety of pathways including further education at university or moving on to an apprenticeship. This course can also lead to a variety of jobs in the sector including nursing, care work, social services and child care to name a few.



Tourism

Course overview

This course gives students a general theoretical background to the Travel and Tourism industry in the UK and abroad. The externally examined unit in the first year focusses on tourism appeal, marketing, employment and tourism management. The internal controlled assessment in year one looks in more detail at one long haul and one short haul destination in terms of transport, appeal and marketing, with students producing advertising campaigns among other activities. In year two students take a more global approach to tourism management as well as looking in detail at how environmental awareness is changing tourism worldwide.

Exam / Coursework

The course is split 50:50 exam and coursework, with a similar split between year one and year two. The majority of time is spent preparing for internal

assessment, with two lessons a week devoted to theoretical knowledge in preparation for the examined units.

Qualification gained

Level 3 Applied Diploma in Tourism
WJEC - www.wjec.co.uk

Entry requirements

5 GCSE's at a grade 4 or higher including level 4 or higher in English and Maths.

Career opportunities

Many tourism students go on to study event management, tourism management or hospitality at university. Some students move into cabin crew training, or apprenticeships within Travel agents or Tour operators.

Business

Course overview

The course is designed to show the interrelated nature of business using business models, theories and techniques to support analysis of real life businesses and the situations they face. The HP6 A-Level Business content is designed to engage students through topics and issues that are relevant in today's society – you will study key contemporary developments such as digital technology and business ethics, globalisation and economic decision making amongst others.

In the first year you will study several areas. These are: What is Business?, Managers, Leaders and Decision Making, Decision Making to improve Market Performance, Decision Making to improve Operational Performance, Decision Making to improve Financial Performance and Decision Making to improve Human Resource Performance. In the second year you will go on to study the various elements of strategy in business including analysing the strategic position of a business, choosing strategic direction, how to pursue strategies and

managing strategic change. All of these are assessed through examinations at the end of the two year course.

Qualification gained

A-Level GCE in Business

AQA - www.aqa.org.uk

Entry requirements

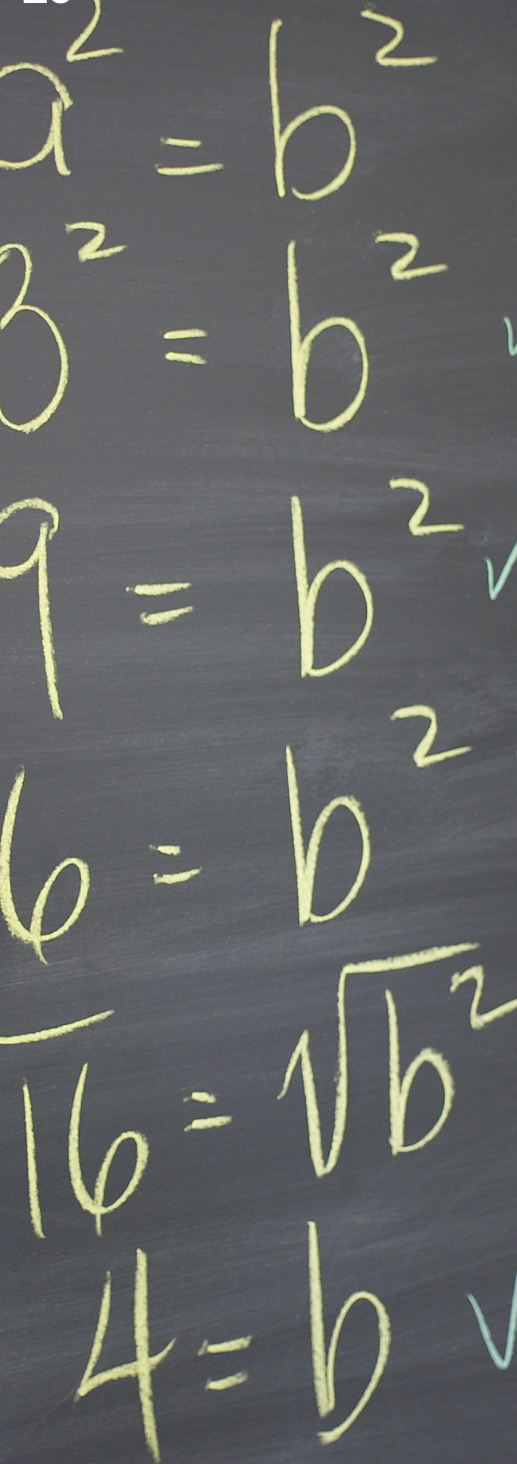
Grade 4 or above in 5 GCSE's
(preferably including English and Maths)

Career opportunities

Students will develop the knowledge and skills needed to analyse data, think critically about issues and make informed decisions – all skills that are needed for further study and employment.

Students who have A Level Business have gone on to succeed in a wide range of business activities such as: Sales and Marketing, Human Resources, Finance, Event Management, Catering and Hospitality, Banking and Investment as well as many others.





Maths - Core

Course overview

Core Maths will be suitable for students who are taking A-Levels in non-maths subjects. Core Maths will prepare you for professional training or higher education courses, or equip you to apply for employment or higher apprenticeships in a wide range of industry sectors. The course will focus on applying mathematical knowledge to practical situations. Please note this is a 1 year course.

Exam / Coursework

This course will be assessed through two 1 hour 30 minute examinations that will take place at the end of the year. Paper 1 covers financial mathematics and analysis of data, Paper 2 focusses on statistical techniques.

Qualification gained

AQA Certificate Level 3 Mathematical Studies

AQA - www.aqa.org.uk

Entry requirements

A minimum of a grade 5 Maths GCSE from the higher tier of entry.

Career opportunities

Core Maths is likely to be particularly valuable for students progressing to higher education courses with a distinct mathematical or statistical element such as psychology, geography, business and management or for any student aiming for a career in a professional, creative or technical field.

Sport & Physical Activity

Course overview

The qualification aims to develop students' knowledge, understanding and skills of the principles of Sport and Physical Activity. Students will gain an insight into the sector as they investigate opportunities for delivering sport and physical activity to a wide range of participants, whether it is to mobilise sedentary people to improve their health and wellbeing or to support regular participants to improve their performance and fitness, all done in a safe and professional environment. In doing so, students will also gain core skills required for employment or further study in the sector such as communication, analysis, organisation and adaptation.

Exam / Coursework

3 mandatory units and 2 optional units make up this course.

Qualification gained

Cambridge Technical Level 3 Extended Certificate in Sport and Physical Activity.

OCR - www.ocr.org.uk

Entry requirements

5 GCSE's at grade 4 or above. A P.E. or sports qualification at level 2 is also desirable but not a must. A passion for the subject.

Career opportunities

Studying this course can lead to a variety of pathways including further education at university or moving on to an apprenticeship. This course can also lead to a variety of jobs in the sector including personal trainer, sports physiotherapist, sports coach, and athlete to name a few.



Psychology

Course overview

Psychology is the scientific study of the mind and behaviour. This fascinating subject has a range of topics to explore and includes studying diverse subjects such as: how early attachment experiences can influence personality; how our memory is unreliable and the origins of mental illness.

Students are often interested in social psychology and this is an important area in the first year of study. We will discuss some of the most interesting pieces of research in the history of psychology including Milgram's famous obedience research and Zimbardo's controversial prison study.

Exam / Coursework

100% Exam - There are three exams taken at the end of two years for the full A-Level.

Qualification gained

A-Level in Psychology

AQA - www.aqa.org.uk

Entry requirements

5 GCSEs grade 4 to 9 including English and Maths.

Career opportunities

Psychologists work in many areas such as clinical psychology, occupational psychology and forensics. Psychology is a great basis for people wanting to work in medical professions, teaching and law.



Computer Science

Course overview

Advances in computing are transforming the way we work and this course gives students everything they need to know about computing. The computer science course gives a broad study of computing and looks at a wide variety of areas including programming, data structures, problem solving, networking, algorithms to name a few. The course focuses on the skills needed to progress to higher education or thrive in the workplace.

Exam / Coursework

80% of the course is assessed through 2 exam papers both lasting 2 hours 30 minutes in which the knowledge the student has gained will be assessed. 20% of the assessment comes from a task set by the exam board that will assess the students ability to solve or investigate a practical problem.

Qualification gained

A-Level in computer science
OCR - www.ocr.org.uk

Entry requirements

5 GCSE's at a grade 4 or higher, including a grade 6 or above in Mathematics. Computer Science or Creative Media, or a related IT course at level 5 or above, is essential.

Career opportunities

Career links to IT technical support, software development, software engineering, app and website construction, engineering, cyber security, data analyst, networks and telecommunications. The course provides opportunities to develop a variety of highly transferrable skills: problem solving, analytics, perseverance, algorithmic thinking, all highly regarded across higher educational institutes and employers.

"I chose this subject because I enjoyed it at GCSE level. Computer Science is widely used in lots of different jobs so I chose it to keep my options open."

First Year Student



Graphic Communication

Course overview

A-Level Art and Design courses provide students with opportunities to develop personal responses to ideas, observations, experiences, environments and cultures in practical, critical and contextual forms. We offer one endorsement for this qualification: Graphic Communication.

Candidates should produce practical and critical/contextual work in a variety of areas using a wide range of different medium. Areas of focus are illustration, advertising, packaging design, design for print, communication graphics, computer aided graphics, multimedia, animation as well as other areas within a graphic communication remit.

Exam / Coursework

There are two externally set tasks, Unit 1 Coursework is 60% and Unit 2 a practical examination accounts for the remaining 40% of the final grade. The tasks are

set by the exam board, AQA, and are marked both internally and externally.

Qualification gained

A-Level in Graphic Communication after 2 years of study

AQA - www.aqa.org.uk

Entry requirements

5 GCSE subjects at a grade 4 or above, which should ideally include a GCSE in a Design Technology subject area or an Arts related equivalent.

Career opportunities

Career opportunities include interior designer, web designer, industrial designer, product designer, teacher, architect, games industry, transport designer, advertising to name just a few career paths.



Digital Media

Course overview

Designed to offer students a broad range of centre-assessed units with practical and wider project-based assessment opportunities, as well as examined units on:

- Media products and audiences
- Pre-production and planning
- Social media and globalisation
- Research for product development

The students will develop professional and social skills through interactions with performers, clients and peers as well as theoretical and technical knowledge and understanding to underpin these skills. This will allow creativity and flair to be harnessed in the design and production of media products used in the industry. Students will be given opportunities to develop conceptual ideas, and visualise these all the way through the production cycle.

Students will also gain an understanding of how different businesses and organisations in the media sector work. For progression and / or employment, students will learn about the variety of opportunities available to them, and the roles and responsibilities of media businesses and organisations within the sector.

Exam / Coursework

Students complete a combination of practical and exam based assessments which will develop a range of digital media production skills.

Qualification gained

Level 3 Certificate, equivalent to A Level, or Level 2 also available (1 year option), GCSE equivalent.

OCR - www.ocr.org.uk

Entry requirements

5 GCSEs at grade 4, including English and Maths, and a either experience of or a qualification in a digital technology subject; Computer Science, Creative iMedia, Photography.

Career opportunities

Career or higher education links to; Digital graphic design and production, film or animation production, web design and development, software development, game design and production, graphics, special effects, e-learning, multi-media, digital solutions: apps, branding, social media management.



Maths

Course overview

A-Level Mathematics builds on and extends the learning of students from GCSE. It develops essential skills of logic, application of reason, method and problem solving. It challenges students at the highest end of intellectual capacity and, as such, is highly regarded in both the workplace and in education.

Exam / Coursework

All assessment is exam based.

The course consists of approximately two thirds pure mathematics and one third applied mathematics (mechanics and statistics).

The pure mathematics content continues the algebra that you will have learned at GCSE, introduces you to calculus (the most significant topic which distinguishes between GCSE and A-Level mathematics), extends your knowledge of trigonometry, and introduces other concepts such as logarithms.

The applied mathematics content covers mechanics (maths applied to problems of forces and motion) and statistics (probability and the analysis of data).

Qualification gained

A-Level in Mathematics, following the Edexcel specification

Edexcel - www.edexcel.com

Entry requirements

A minimum of a grade 6 in Maths GCSE and four other subjects at grade 5 or above. Student will also be expected to sit an entry test

Career opportunities

Careers include: engineering (mechanical, civil or aeronautical) science, academia, finance and computer technology.



Physics

Course overview

How does the universe work? What is everything made of? How do matter and the fundamental forces behave? If you are interested in these questions then Physics is the course for you. This is a gateway course for careers as varied as architecture, engineering and medicine, telecommunications and sound engineer.

The AQA A-Level course covers all of topics central to an understanding of physics, and a grounding for further education. These range from classical mechanics, electricity, waves, and radioactivity, to particle physics and quantum theory. In the second year, students will choose an area of study which includes astrophysics, engineering, electronics and medical physics. They will also learn essential research and practical skills.

Exam / Coursework

The course consists of 8 core units;

- 1: Measurements and their errors
- 2: Particles and radiation
- 3: Waves & optics
- 4: Mechanics and materials
- 5: Electricity
- 6: Further mechanics and thermal physics

7: Fields and their consequences

8: Nuclear physics

The A-Level course is examined by three papers of 2 hours, assessing units 1-8, the optional unit, and written practical skills.

There is also ongoing practical assessment, which results in a standalone "pass/fail" qualification, in addition to the A-Level.

Qualification gained

A-Level in Physics

AQA - www.aqa.org.uk

Entry requirements

5 x 4-9 grades at GCSE including 2 x 6 grades in combined science or physics and one other science and a 6 grade in maths.

Career opportunities

Ranging from scientific careers, such as astrophysicist and nuclear physicist, to related disciplines such as energy management and electrical / mechanical engineering, to more tangential careers such as lawyer and surgeon.

"Hove Park Sixth Form teachers cater to students' individual needs; they understand that education doesn't come in a one size fits all."

First Year Student

English Literature

Course overview

During the course, you will have the opportunity to study a wide range of novels, plays and poetry. In the first year, you will be introduced to conventions of the Tragedy genre, studying 3 texts related to this. You will also study critical theories through a selection of poetry by one poet. In the second year you will study a range of unseen crime extracts and three set texts.

Exam / Coursework

The course is split 80% exam with 20% coursework. There are 2 exam papers taken at the end of the second year worth 40% each. These will ask you to answer questions on the various aspects of tragedy and elements of crime writing you have studied throughout the course. For the coursework you will write two essays. The first will be about two of the poems you have studied and the second will ask you to write about your novel or short-story collection.

Qualification gained

A-Level in English Literature
AQA - www.aqa.org.uk

Entry requirements

GCSE at least grade 6 in English Language and (preferably) grade 5 in English Literature.

Career opportunities

Career links to law, journalism, copywriting and advertising, media and teaching at any level.

"After studying History at GCSE, I chose to continue into A Level as I find it intriguing learning about what people did so long ago."

Second Year Student

History

Course overview

History is an academic A-Level, one of the most respected by universities and colleges, but it is also so much more. History A-Level opens your eyes to the world around you. Students find it enjoyable, interesting and are fully supported to get the very best out of their studies.

Exam / Coursework

A two year course with exams at the end of Year 12 and Year 13 for Units 1 and 2.

Unit 1: 'The making of a Superpower' USA 1865-1975 (40%)

Unit 2: "Royal Authority and the Angevin Kings, 1154-1216" (40%)

Unit 3: Historical investigation - 'Japan, China and the West' (20%) – Coursework unit

Qualification gained

A-Level in History

AQA - www.aqa.org.uk

Entry requirements

Students should have five GCSEs 4-9 including English and History.

Career opportunities

History graduates have gone on to great careers in business, finance, government, literature and the arts, media, teaching, law and public relations. This is because History graduates have skills and qualities that many employers want. They will have built up the ability to work independently, gather and use information, explain an argument and present their opinions.

Law

Course overview

Law affects many aspects of our daily lives, yet many people have little knowledge of how the legal system operates and how laws come to be made. This course enables students to gain an understanding of the role of Law in today's society while raising awareness of the rights and responsibilities of individuals. Students will also learn about legal rules and principles and how to apply these to real life situations. At the same time, students will develop their analytical and problem solving skills. In short students will begin to think like legal professionals.

Exam / Coursework

At HP6 we follow the OCR syllabus. The course is offered over two years. Students will then take three 2 hour papers each worth a third of the overall marks for the full A-Level. There are no coursework components.

Qualification gained

A-Level in Law

OCR - www.ocr.org.uk

Entry requirements

5 GCSE subjects at a grade 4 or above, which should include a GCSE in English Language or Literature at grade 4 or above.

Career opportunities

Studying Law is useful for a broad range of degree subjects including, but not limited to, law, media, education, journalism, business management, criminology, social work and politics.





Photography

Course overview

Students will be introduced to a variety of experiences exploring a range of photographic media, techniques and processes. They will explore relevant images, artefacts and resources relating to Photography and students responses to these examples will be shown through practical and critical activities which demonstrate understanding of different styles, genres and traditions. Students will use sketchbooks, workbooks and journals to underpin their work where appropriate and may use traditional methods and/or digital techniques to produce images.

Exam / Coursework

The course is currently 100% coursework. Students will develop a photographic portfolio supported by a written element including between 1000-3000 words.

Qualification gained

A-Level in Photography

AQA - www.aqa.co.uk

Entry requirements

5 grade 4 GCSE's including art and design
GCSE grade 4 or above.

Career opportunities

This specification lays an appropriate foundation for further study of Art and Design or related subjects in higher education or careers related to the art and photography industry.

Sociology

Course overview

A-Level sociology is a two-year course studying a range of in-depth sociological topics in the modern world. Candidates will look at perceptions of crime and criminal behaviour, the role of education in the UK, and diverse concepts such as families, culture, and the economic and political divides within our society. Candidates will develop skills in research techniques and essay writing and draw upon psychology, politics, law and history in their studies for sociology.

Exam / Coursework

There are three externally marked exams at the end of the two years, each worth 33% of the final grade.

Qualification gained

A-Level in Sociology after two completed years of study.

AQA - www.aqa.co.uk

Entry requirements

The entry requirements for Sociology are 5 GCSE subjects at a grade 4 or higher. One of these qualifications must be GCSE English Literature or Language.

Career opportunities

Many students use A-Level Sociology to build careers in journalism and media, publishing, health care, education and social services. Some students have used their qualification to study Sociology at degree level at University.

