



**ORDER ONLINE AT
INSIDEAVERITT.COM/UNIFORMS
OR CALL 1-800-211-0314**

Your User ID and Password are the same as in 2021.
If you haven't ordered uniforms before, follow these four steps:

1. Under "Sign In," enter your User ID, which is AVR plus the last six digits of your Social Security number followed by the first three letters of your last name (for example, AVR123456SMI).
2. Leave the "Password" field blank.
3. Click on "Sign In" (NOT "Register").
4. You will be prompted to create a password, then you will be brought back to the login page to enter your User ID and new password.

**YOU CAN ALSO CALL 1-800-211-0314 TO PLACE YOUR ORDER
OVER THE PHONE OR IF YOU NEED TO RESET YOUR PASSWORD.**

For questions regarding the uniform
program, send an email to
uniforms@AverittExpress.com.

DESIGN COLLECTIVE®
by **CINTAS**

**In order to both simplify the ordering process and reduce paper waste,
there is no mail-in order form in this year's catalog. Please order online
at InsideAveritt.com/uniforms or call CINTAS at 1-800-211-0314 to
place your order.**



**Spend your entire uniform allotment and you could
WIN a gift card for up to \$500.**

See details on page 9.



AVERITT®
22



TABLE OF CONTENTS

04	WHAT'S NEXT	25	ALLOTMENT
06	PROFESSIONAL IMAGE	26	UNIFORM CARE
08	REFLECTIVITY	28	STAIN TIPS
09	20% DISCOUNT	29	REPAIR OR RECYCLE
10	MENSWEAR	30	FOOTWEAR
12	WOMENSWEAR	31	MEASUREMENTS
14	DOCKWEAR	32	SAFETY
16	OUTERWEAR	33	ADDITIONAL LOGOS
18	ACCESSORIES	34	EXCHANGE PROGRAM
20	ON TOUR LOGISTICS	35	PEOPLE LIKE YOU
22	MERCEDES	36	ORDERING INSTRUCTIONS
24	ESSENTIALS		



For 50-plus years, we've stayed focused on doing things the right way so we can secure our future together. And one important way we secure our future is our uniforms.

Our uniforms set us apart in the transportation industry. They let our customers know they're partnering with professionals. Because of our sharp image, our customers know we'll be there for the long haul. They know we'll be ready for whatever comes next.

Much has changed since we began our journey in 1971. And during the next 50 years, more things will continue to change. Whatever we face together, some things will always stay the same – that includes our focus on people, and our focus on professionalism.

As you proudly wear the Averitt red, you're helping us stay strong for whatever comes our way. I'm proud of our past, and I'm even more excited about our future. And I can't wait to see what's next.

Gary D. Sasser

Our Driving Force Is People

WHAT'S NEXT



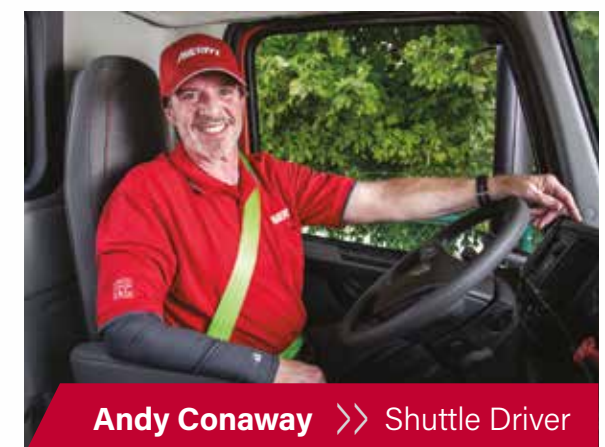
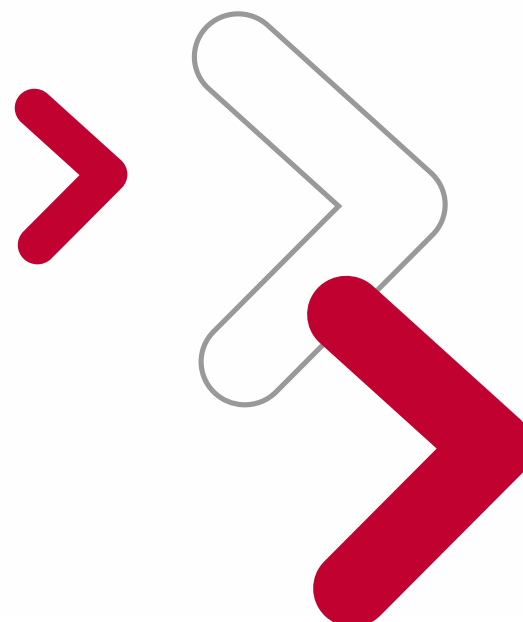
After 50 years of driving business forward for customers around the world, we've learned one inescapable fact: no one has any idea what tomorrow holds.

We can never be certain what's around the next turn, or what new technology will next transform life as we know it.

The only thing we know for certain is that whatever opportunities present themselves, we'll meet them with the same passion and enthusiasm that have propelled us to where we are today. And we'll do it with the added momentum we've gained from 50 years of steady, forward progress.

We'll meet what's next with energy, with drive, and with each other – confident that as a team there's nothing we can't accomplish.

Together we'll transform what's next... into what's best.



Andy Conaway >> Shuttle Driver

THANK YOU to the Knoxville Service Center for hosting our 2022 Uniformity photo shoot.

LET'S GREET TOMORROW IN STYLE

Whatever comes next will have at least one thing in common with what came before: namely, the polished, professional appearance of our associates. Here are a few guidelines to help ensure that we all stay looking sharp well into the future.



HATS

Associates should wear only Averitt-approved headwear. No hats or other clothing with another company's logo. Please wear your Averitt hat with the bill facing forward.



SHIRTS

All driver shirts should be tucked in and buttoned, except for Averitt-approved no-tuck shirts and women's shirts with side slits in the lower hem.

Clothing should be neat, clean, and in good repair. *For tips on how to remove several common stains, see page 28.*



PANTS

Approved pants and shorts should fit properly, rest on the hips, and be worn with a black belt. Shorts should not be higher than 3 inches above the knee.



SHOES

Shoes should be solid black, clean, and in good repair. *For safety, some shoes are also available with steel toes. See page 19 for all options.*



ACCESSORIES

Belt buckles should not be oversized or feature excessive designs.

Black or gray socks only – no white or multicolored.

Please remove any visible body piercings (including tongue piercings) while working.

No excessive jewelry or accessories such as pins or buttons should be worn.

Women may wear earrings, but hoops and dangling earrings may not be worn while handling freight.



GROOMING / APPEARANCE

Please keep yourself well-groomed and free from offensive body odors.

Men's hair should not extend beyond the earlobe in the front, or below the collar in the back. Ladies should pull their hair back.

Hair must be a natural color. No green, purple, etc.

Due to possible allergies or sensitivities, associates should not wear personal fragrance products with a noticeable scent.

Facial hair should be groomed according to handbook guidelines.

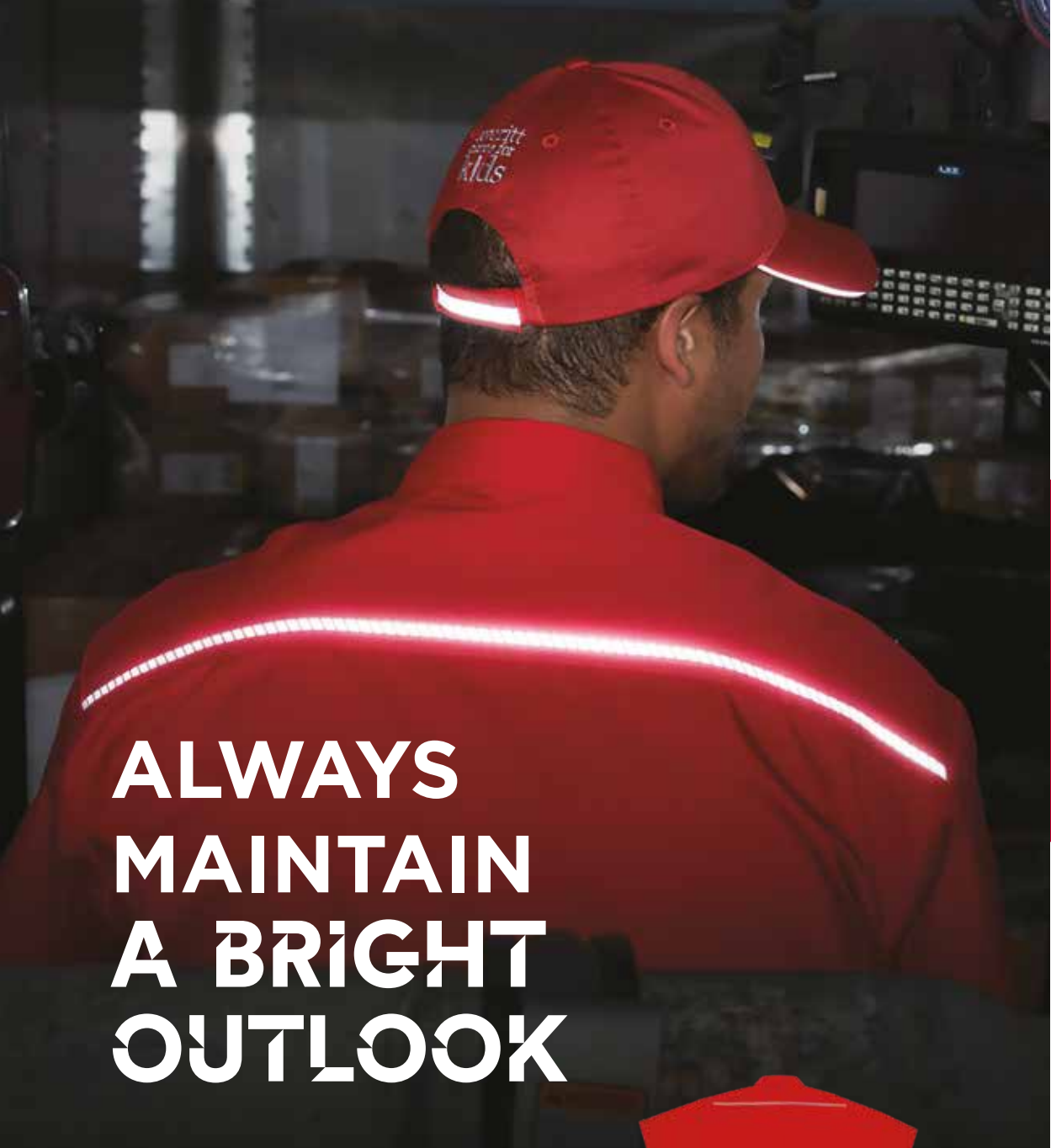
All tattoos should be either covered or inconspicuous. No offensive or disturbing tattoos are allowed. *See page 17 for a sleeve option that provides a covering for tattoos.*



ALSO...

Your garments and hats should always remain their original Averitt Red. If it's starting to fade or fray, it's time to replace it. See page 29 for tips on deciding whether to repair or recycle your Averitt gear.

Visit InsideAveritt.com/image for additional image and uniform guidelines.



ALWAYS MAINTAIN A BRIGHT OUTLOOK

Select from several shirts and outerwear items with pre-equipped reflective elements - and add an extra touch of safety to your already glowing performance.



We see savings in your future.

20%

OFF ALL
UNIFORMITY
GEAR*

Order at [InsideAveritt.com/uniforms](https://www.insideaveritt.com/uniforms)
or by calling 1-800-211-0314.

Visit page 25 to see if you're eligible
for a uniform allotment.

*Must order by March 31 to be eligible
for 20% savings.

- > Spend your allotment by January 31
and be entered to **WIN a \$500 gift card.**
- > Spend it by February 28 and be
entered to **WIN a \$250 gift card.**
- > Spend it by March 31 and be
entered to **WIN a \$100 gift card.**



Ty Moore >> Frontline Leader



Mike LaRue >> City Driver

SOME LOOKS WILL
NEVER GO OUT
OF STYLE



MENSWEAR



SHORT-SLEEVE
POLO SHIRT*

WITH POCKET
\$17.30 (116282-151)

WITHOUT POCKET
\$16.79 (116283-151)
100% polyester



ACTION BACK
NO-TUCK SHIRT*

\$17.92 (116918-151)
Cotton/polyester



KENTON MALE SHIRT*

SHORT-SLEEVE
\$17.61 (117782-150)

LONG-SLEEVE
\$18.64 (117783-151)
Cotton/polyester



NO-TUCK SHIRT*

SHORT-SLEEVE
\$17.61 (89518-15)

LONG-SLEEVE
\$18.64 (64241-15)
Cotton/polyester



MEN'S
WAFFLE POLO*

\$26.84 (116915-151)
100% polyester



While Supplies Last
MOISTURE
MANAGEMENT
POLO

\$26.84 (71424-15)
Includes reflective
piping on front
and back



MEN'S
CORE POLO

SHORT-SLEEVE
\$21.84 (118098-150)

LONG-SLEEVE
\$28.39 (71425-16)
Cotton/polyester



ULTIMATE CARGO
PANTS/SHORTS

PANTS
\$32.08 (115630-33)

SHORTS
\$30.88 (115631-33)
100% polyester



CARGO PANTS/
SHORTS

PANTS
\$20.39 (270-33)

SHORTS
\$16.39 (370-33)
Cotton/polyester



COMFORT PANTS

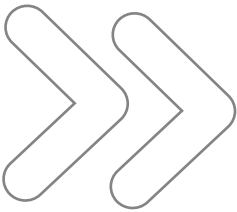
FLAT
\$18.39 (945-33)

PLEATED
\$18.90 (865-33)
Cotton/polyester



Lisa Ketsdever >> Team Shuttle

**THE FUTURE IS
BRIGHT (RED)**



WOMENSWEAR

Many of the items shown here are produced specifically in ladies' sizes. Ultimate cargo shorts/pants and action back no-tuck are available only in men's sizes. Women can also choose from any items in the men's section.



**MOISTURE
MANAGEMENT
POLO**

SHORT-SLEEVE
\$17.39 (61582-15)
100% polyester micro



**ACTION BACK
NO-TUCK SHIRT**

\$17.92 (116918-151)
Cotton/polyester
Talls Available



**WOMEN'S
WAFFLE POLO**

\$25.39 (116916-151)
Cotton/polyester



**WOMEN'S
CORE POLO**

SHORT-SLEEVE
\$26.84 (118099-150)

LONG-SLEEVE
\$28.39 (71426-15)
100% polyester



**WOMEN'S BUTTON
DOWN SHIRT**

SHORT-SLEEVE
\$33.39 (92434)

LONG-SLEEVE
\$33.39 (92433)
Cotton/polyester



**ULTIMATE CARGO
PANTS/SHORTS**

PANTS
\$32.08 (115630-33)

SHORTS
\$30.88 (115631-33)
100% polyester



**CARGO
PANTS/SHORTS**

PANTS
\$20.39 (270-33)

SHORTS
\$16.39 (370-33)
Cotton/polyester



**CATHY-FIT
WORK PANTS**

\$21.53 (395-33)
Cotton/polyester

Narrower through waist,
fuller hip & thigh to fit
curvier figure



**SUSAN-FIT
WORK PANTS**

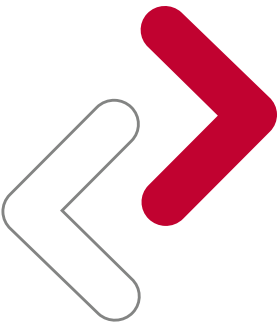
\$19.52 (390-33)
Cotton/polyester

Fuller through waist,
narrower hip & thigh
to fit slim figure



Alex Bethune >> Dock Associate

INBOUND... OUTBOUND...
FUTUREBOUND



DOCKWEAR

The items on these pages are designed specifically for the unique needs of dock associates. They can also choose from any other items available throughout this catalog.



T-SHIRT WITH POCKET
(Dock Associates Only)
\$7.57 (291-15)
Preshrunk 100% cotton



DRI-BALANCE/ZORRELL DOCK T-SHIRT
(Dock Associates Only)
WITH POCKET
\$14.57 (68669-15)
WITHOUT POCKET
\$14.06 (117781-151)
Cotton exterior, moisture-wicking polyester interior



CREWNECK SWEATSHIRT
(Dock Associates Only)
\$20.38 (63292-15)
100% cotton



HOODED PULLOVER SWEATSHIRT
(Dock Associates Only)
\$19.26 (69814-15)
Heavyweight 50/50 cotton/polyester with spandex



AVERITT 1971 REFLECTIVE T-SHIRT
(Dock Associates Only)
SHORT-SLEEVE
\$14.34 (64243-15)
LONG-SLEEVE
\$15.34 (64242-15)
100% cotton
Reflective heat seal



COVERALLS
(Dock Associates and Flatbed Drivers Only)
NON-INSULATED
\$25.60 (912-33)
INSULATED
\$44.96 (914-33)
Tough polyester/cotton twill
Twill shell, quilted inner lining



Mike Hornback >> Truckload Driver

Mike LaRue >> City Driver

BE READY
FOR WHATEVER
MOTHER NATURE
DISHES OUT NEXT



OUTERWEAR



SOFT SHELL JACKET

\$46.34 (64240-15)
100% polyester microfleece lining
100% polyester woven shell bonded to a water-resistant film insert



STADIUM JACKET

\$24.57 (80600-15)
100% polyester
Lightweight jacket with fold-away lined hood



QUARTER-ZIP FLEECE PULLOVER

\$27.09 (63289-15)
100% polyester fleece



CLASSIC FLEECE VEST

\$23.64 (63291-15)
100% polyester fleece



WINDBREAKER

\$60.49 (5337-15)
100% polyester



LEVEL II SEASONAL JACKET

\$40.02 (117784-15)
Wind- and water-resistant nylon with reflective trim; zips together with Tundra System Outer Parka



TUNDRA SYSTEM OUTER PARKA

\$47.64 (80178-15)
Wind- and water-resistant nylon with reflective trim; zips together with the Level II Seasonal Jacket



WOODSMAN HEAVYWEIGHT PARKA

\$82.88 (92175-15)
100% polyester
Wind- and water-resistant



REFLECTIVE PONCHO

\$36.39 (64244-15)
100% poly taffeta
Reflective heat seal logo
One Size Fits All



HI VIS TEAR AWAY SAFETY VEST

\$15.89 (074361)
100% polyester
Breakaway with zip-n-rip closure



ARM SLEEVE

\$8.39 (116587-320)
Spandex/polyester



Michael White >> Shuttle Driver

THE FUTURE IS
ALL ABOUT THOSE
**EXTRA LITTLE
TOUCHES**



ACCESSORIES



**REFLECTIVE
MESH HAT**
\$10.84 (116947-150)
Cotton/polyester twill
Vented mesh material
with reflective strap



FLEX FIT CAP
\$8.38 (71423-15)
Cotton/polyester twill
Reflective strap



**HAT WITH
REFLECTIVE TRIM**
\$6.89 (62970-15)
Cotton/polyester
Additional logo options
available; see page 33



**TWILL/MESH
BALL CAP**
\$7.57 (128-12)
High profile, adjustable
Vented mesh material



**FLEECE
KNIT CAP**
\$9.32 (85412-15)
100% polyester fleece



KNIT CAP
\$9.01 (131-15)
100% acrylic



**TIMBERLAND®
FEMALE WORK
BOOTS**
\$113.88 (83688-35)



**LADIES
ROCKPORT®
SLIP ON**
\$100.88 (73163-35)



**REEBOK® SOFT
TOE SHOES**
\$75.88 (73162-35)
Slip-resistant



**WOLVERINE
FLOORHAND
STEEL TOE BOOTS**
\$95.88 (73169-35)
Leather



**SCRATCHLESS
BUCKLE BELT**
\$11.59 (137-35)
Leather



REFLECTIVE BELT
\$25.88 (115675)
Leather



**DRIVING
& WORK
GLOVES**
\$15.89 (74034-35)
Breathable poly mesh



**PRO FEET®
3-PACK**
CREW SOCKS
\$14.27 (83868-33)
ANKLE SOCKS
\$14.27 (83869-33)



**CLASSIC
UNIVERSAL
BACK SUPPORT**
\$21.84 (90581-35)

Our On Tour Logistics teams specialize in providing customized solutions for the production and entertainment industries - whether it's moving sensitive lighting rigs for a local event, or managing the logistical needs for a recording artist's worldwide stadium tour.

THIS UNIFORM IS IN PERFECT HARMONY WITH ITS ENVIRONMENT



WIND-SHIRT
\$20.84 (73040-35)
100% polyester



THREE-SEASON JACKET
\$47.37 (80843-35)
100% polyester



HOODED PULLOVER
\$19.26 (69814-35)
Cotton/polyester with spandex



While Supplies Last
QUARTER-ZIP FLEECE PULLOVER
\$26.88 (069819-35)
100% polyester



LEVEL II SEASONAL JACKET
\$40.02 (80177-35)
100% polyester fleece with 100% taslan nylon shell



TUNDRA SYSTEM OUTER PARKA
\$47.64 (80178-35)
100% taslan nylon



WEATHERPROOF SOFT SHELL JACKET
\$30.84 (060734-35)
95% polyester/5% spandex

In addition to the items on these pages, OTL associates can also choose from our selection of shoes, gloves and other accessories found on pages 17 and 19.

ON TOUR LOGISTICS

In the process of supporting artists on stage, our On Tour Logistics (OTL) associates need to be virtually invisible. The items on these pages are designed specifically for their needs.



CARGO PANTS/ SHORTS
PANTS
\$20.39 (270)
SHORTS
\$16.39 (370)
65% polyester/35% cotton



COMFORT PANTS
FLAT
\$18.39 (945)
PLEATED
\$18.90 (865)
65% polyester/35% cotton



SCREEN PRINT T-SHIRT
SHORT-SLEEVE
\$18.79 (65158)
LONG-SLEEVE
\$21.99 (65159)
100% cotton



PEAK PERFORMANCE MALE POLO
\$26.88 (67306)
67% cotton/33% polyester



BLENDED MALE POLO
\$20.38 (67146)
60% cotton/40% polyester



KENTON MALE SHIRT
SHORT-SLEEVE
\$24.36 (65107-351)
LONG-SLEEVE
\$24.36 (65107-350)
65% polyester/35% cotton



POCKET KNIT POLO
\$19.88 (62157)
100% polyester micro



WOMEN'S MOISTURE MANAGEMENT POLO
\$17.39 (61582)
100% polyester micro



CATHY-FIT WORK PANTS
\$21.53 (395)
65% polyester/35% cotton



SUSAN-FIT WORK PANTS
\$19.52 (390)
65% polyester/35% cotton



FLEECE KNIT CAP
\$8.82 (85412-35)
100% polyester



KNIT CAP
\$9.39 (085433-35)
100% acrylic



MOISTURE MANAGEMENT BALL CAP
\$12.38 (62160-35)
100% polyester mesh

AVERITT[®]

MERCEDES

THE PERFECT BLEND OF STYLE AND PERFORMANCE (AND THE CARS ARE PRETTY NICE TOO)



**ZIP-OFF SLEEVE
SOFT SHELL JACKET**

\$59.99 (70899)
Stretch polyester



**REFLECTIVE
PERFORMANCE
POLO**

\$23.00 (60279)
100% polyester

In addition to the items on these pages, associates on the Mercedes account can also choose from our selection of shoes, gloves and other accessories found on page 19, as well as all approved gray pants and shorts throughout the catalog.

MERCEDES

The items on these pages are designed specifically for associates working on the Mercedes-Benz account in Vance, Alabama.



**POCKET KNIT
POLO**

\$19.88 (62157)
100% polyester micro



**SPORT TEK
SPORT WICK
POLO**

\$20.88 (91863-201)
100% polyester



**MEN'S MOISTURE
MANAGEMENT
POLO**

\$18.88 (61581)
100% polyester pique

Talls Available



**ACTION BACK
LONG-SLEEVE SHIRT**

\$19.88 (116931)
65% polyester/35% cotton



**ACTION BACK
SHORT-SLEEVE SHIRT**

\$18.88 (116930)
65% polyester/35% cotton



**WOMEN'S
SUPERPRO TWILL
LONG-SLEEVE
SHIRT**

\$32.00 (118506-320)
3.4-ounce, 55/45 cotton/poly



**WOMEN'S
SUPERPRO TWILL
SHORT-SLEEVE
SHIRT**

\$31.00 (118507-321)
3.4-ounce, 55/45 cotton/poly



KNIT CAP

\$8.12 (131)
100% acrylic



**CONTEMPORARY
PROFILE CAP**

\$8.99 (85332)
Low profile



REFLECTIVE HAT

\$9.95 (118495-35)
65% polyester/35% cotton

PREPAREDNESS IS ESSENTIAL

There's an old adage that says "proper planning prevents poor performance." That's as true for your uniform as it is for any other aspect of your job. To make sure you're ready for what the future throws your way, please make sure you always have the following items on hand:



5 SHIRTS



1 PAIR OF SOLID BLACK SHOES



5 PAIRS OF PANTS



1 PACK OF BLACK OR GRAY SOCKS



2 HATS



1 BLACK BELT



1 OUTERWEAR ITEM



1 PAIR OF GLOVES



WE CAN ALL USE A LITTLE HELP LOOKING OUR BEST

To make it easier to keep the right items on hand, associates are eligible to receive an annual uniform allotment* on January 1 of the calendar year after they've been hired.

ELIGIBLE ASSOCIATES INCLUDE:

- > Full-time and part-time drivers (Uniform Required)
- > Full-time and part-time dock associates (Uniform Required)
- > Frontline leaders
- > Operations managers
- > Field OS&D associates
- > Field W&R associates
- > Driver support specialists
- > Maintenance frontline leaders who are NOT on the rental program

**This allotment can only be used for uniform items through CINTAS.*





A LITTLE EXTRA **CARE** WILL HELP YOUR UNIFORM SEE MANY MORE TOMORROWS

A big part of maintaining a sharp, professional image is keeping your uniform in tip-top shape. By following these few simple steps, you can make sure your clothes always look their best.



LOOK FOR STAINS. Look over your clothes after each use to see if there are any obvious stains. If you notice any, get things in the wash right away. The longer a stain sits, the harder it is to remove.



STICK WITH LIQUID. Whenever possible, avoid using powdered detergents when washing your uniform. Many contain corrosive chemicals that can break down fabric over time and can even cause the colors to run.



KEEP THINGS COOL. Washing your clothes in cool water gets them just as clean as using warmer water. It will also help preserve colors and avoid shrinkage.



WASH ITEMS SEPARATELY. Washing shirts along with heavier items like jeans and pants not only increases the amount of wrinkling, but it can also shorten the life of the garment. Whenever possible, wash heavier items separately.



AIR IT OUT. All clothes dryers can damage fabrics over time. So whenever possible, try to use a clothesline or a drying rack instead. If a clothes dryer is a must, remove your clothes while still slightly damp to avoid shrinking.

Sica Dingui >> Dedicated Driver

FOLKS ON THE MOVE TEND TO GET MESSY

Let's face it. Stains are a natural part of the job. But that doesn't mean they have to slow you down.

DIESEL FUEL

First, hang the garment outside to avoid having the odors spread. If there's a significant amount of fuel, hose the garment off, wring it out (wearing rubber gloves) and let it hang outside for at least 24 hours. Once the smell is gone, it's safe to put it in the washing machine. Set the machine for the largest possible load, and use the hottest water the garment will tolerate. Add 1/4 cup of ammonia and a little extra laundry detergent, and wash as usual. Only after the smell or stain is completely gone is it safe to put the garment in the dryer.

> **TIP: You could also use 2 cups of vinegar to help eliminate the odor.**

OIL & GREASE

There are a few approaches that work well for removing these stubborn stains. One solution is to coat the area with cornstarch, let it soak between 30 minutes and an hour, then launder with heavy-duty detergent. Another approach is to spray some WD-40 on the stain and let it sit for about 30 minutes. Then rub a little dish soap on the area and wash as normal.

BLOOD

If you have a bloodstain that's only 10 to 15 minutes old, rinse it under a lot of cold water, rubbing the fabric against itself. Then wash as normal. If it's an older stain, first drench it in cold water, then soak it in a bucket with water and an enzyme-based stain remover like OxiClean.

COFFEE & SODA

Presoak the garment in a solution of liquid laundry detergent and cool water (about 2 tablespoons of detergent to 1 gallon of water) for at least 30 minutes. Then launder in warm or hot water. After soaking for another 10 minutes or so, wash as normal in cold water.

REPAIR OR RECYCLE

Even the-best-cared-for uniforms will someday come to the end of the road. Learn to recognize the signs that it's time to part ways.



STAINED COLLAR

Try pretreating the collar with shampoo. Keep it from happening again by wearing it only once between washes.

STAINS UNDER THE ARM

Dissolve a few denture-cleansing tablets in a bowl of warm water, or try OxiClean.

MISSING BUTTONS

Easy peasy – all it takes is a needle and thread and you're back in business.



FRAYED COLLAR

Generally speaking, it's not worth the time or money to have a collar repaired.

FRAYED CUFFS

Getting the cuffs replaced is just as expensive as getting a new shirt. So go ahead and exchange the whole thing.

FADED COLOR

It's called Averitt Red – not Averitt pink. If your shirt has faded through use or sun, it's time to move on.



See page 34 for our uniform exchange program.

YOU CAN'T STEP INTO THE FUTURE IN SHODDY SHOES

The right footwear is an important part of your uniform. Not only does it contribute to a professional overall appearance, it improves your safety and comfort as well.

PUT A CLEAN FOOT FORWARD

As you saw in the Grooming Guide on page 6, shoes should be black, clean, and in good repair. They don't need to be polished to a mirror shine, but they should be kept clean and free from debris and scuffs. The goal is to present a professional, uniform image at all times.

STYLE DOES MATTER

While you don't have to buy your work shoes through Averitt, there are still certain parameters.

➤ **Note: No cowboy boots, loafers or sneakers.**



MAKE SURE EVERYTHING MEASURES UP

It's easy to take sizing for granted. But styles, fabrics, and even bodies can change from one year to the next. In order to make sure you get the best fit possible, take a few minutes to get a proper measurement.

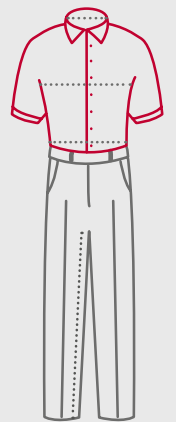
MEN

Neck. Measure around the base of the neck, where a collared shirt would fit.

Chest. Measure across the fullest part of the chest, under the arms and across the back.

Waist. Measure over the shirt at the waistline, where pants are normally worn. Tighten the tape as snug as you prefer your pants to fit.

Inseam. After adjusting pants to the position they're normally worn, measure from the inseam to the top of the shoe (or desired length).



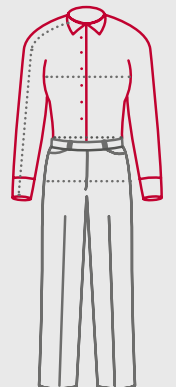
WOMEN

Bust. Measure under the arms and around the fullest part of the bust.

Waist. Measure around the narrowest part of the natural waistline (just above the hip bones).

Hips. Measure around the fullest part of the hips (normally 7" to 8" below the natural waistline).

Sleeve length. Measure from the center of the outside collar over the shoulder, around the elbow, to the point where the sleeve should end (usually the bottom of the wrist bone).



DON'T JUST LOOK AHEAD, LOOK AROUND

Safety requires both focus and foresight. It can't be a "part time" thing – it requires constant attention, every single day. Since the beginning, it's been our driving concern here at Averitt. And it will remain so for all the days yet to come. So stay alert, stay sharp, and keep an eye out for yourself and for each other.




Princess Bates >> City Driver

>>> **THINK TWICE.**
THINK SAFE. <<<



STITCH YOUR HISTORY

Give your uniform a personal touch by adding one or more of the additional logo options below. All are available at no cost, and you can choose any combination of two.

U.S. VETERAN	If you're a current or former member of the United States military, you can showcase your pride and patriotism with the U.S. Veteran logo.
	It was one of the first associate-driven charities in the United States. And it grows stronger every year. If you participate in Averitt Cares For Kids, you can have the logo stitched on everything from shirts, to outerwear, to hats. If you're not a member and would like to join, visit InsideAveritt.com/ACFK .
<div> <div>20 YEAR TEAM</div> <div>30 YEAR TEAM ★★★</div> <div>40 YEAR TEAM ★★★★</div> </div>	We're forever grateful to the associates who choose to stay with Averitt for the long haul. So if you're a current member of the 20, 30, or 40 Year Team, show off your experience by having the logo embroidered on your garments.
DRIVER TRAINER	If you're one of the exceptional trainers who are helping shape the future of Averitt by teaching the next generation of drivers, you can have the Driver Trainer logo added to your garments.

GIVE YOUR OLD SHIRTS A PROMISING TOMORROW

If you're a uniform allotment eligible associate with Averitt shirts you no longer wear, don't throw them out. Send five of them back to us and we'll send you a brand new one. We've partnered with a charity that repurposes the shirts you exchange in order to help those in need. So let your old or unworn shirts make a difference in someone's future.

Since 2018 we've recycled over 16,000 garments.



STEP 1: FILL IT OUT

Complete the form online at InsideAveritt.com/uniformexchange.



STEP 2: SEND THEM IN

Send back five old uniform shirts by truckmail to CSC - Attention: Marketing and Communications.



STEP 3: WEAR IT WITH PRIDE!

Receive a new shirt!



WITH ANY LUCK, WHAT'S NEXT FOR AVERITT IS MORE PEOPLE LIKE YOU

Our associates have always been the motor that keeps this company moving. You're a very special breed - and we're hoping you know some other folks who are cut from the same cloth. You know the type: people who fit our culture and values. People who would fit right in with The Averitt Way. Your referrals are our best path toward a bright, successful future. (And a great way for you to make some extra cash.) So keep those referrals coming!

To see a complete list of available opportunities, and learn more about how you can receive rewards for every person you refer, visit InsideAveritt.com/PeopleLikeYou.

**PEOPLE
LIKE YOU**
Referral Program

CHECKLIST

- > Strong work ethic
- > Team-focused
- > Safety-minded
- > Good listener
- > Embraces challenges