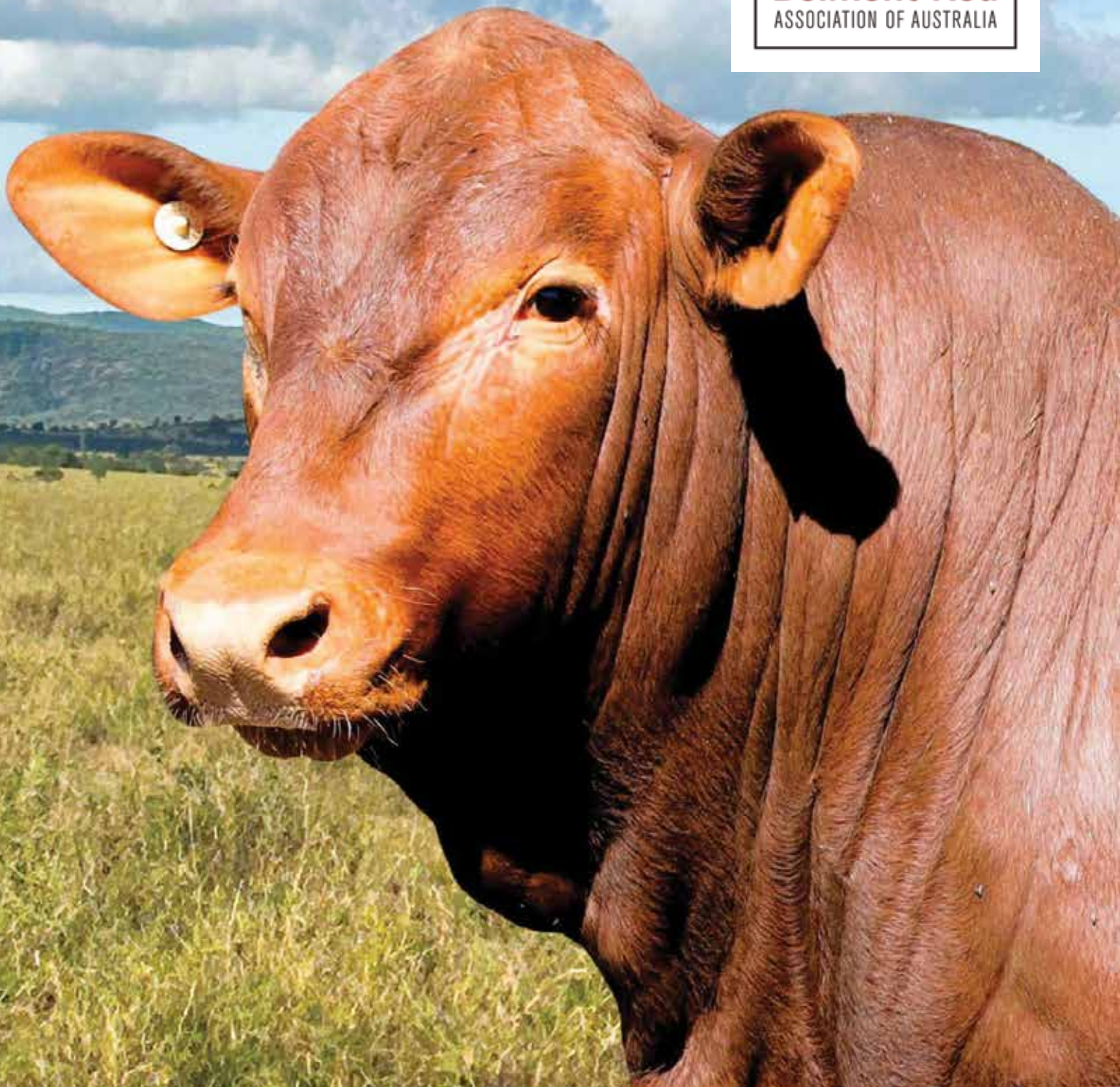


BELMONT RED ASSOCIATION OF AUSTRALIA

BULL & FEMALE SALE

- 46 LOTS -

CQLX Gracemere selling complex,
Capricorn Highway.
Monday 1st September 2025, at 11am.





A NUTRIEN AG SOLUTIONS PARTNER

Josh Heck 0409 732 676

joshua.heck@gdlrural.com.au

Georgie Connor 0428 347 550

georgie.connor@gdlrural.com.au



***We would like to thank the
following sponsors:***



DLF Seeds is the largest forage seed company in Australia, with over 80 years' experience supplying Australian farmers with the widest range of forage seed varieties.

info@dlfseeds.com.au

www.dlfseeds.com.au

Peter Tame - 0428 405 181

Southern QLD & Northern Rivers NSW



Livestock Intelligence™
MSD Animal Health Intelligence

BELMONT RED ASSOCIATION OF AUSTRALA PRESENTS

BULL SALE 2025

Bulls

WAHROONGA BELMONT REDS – LOTS 1-6

GREENHILLS BELMONT REDS - LOTS 7-12

WAHROONGA BELMONT REDS – LOTS 13 – 37

Heifers

WAHROONGA BELMONT REDS – LOTS 38 – 46

WITH VENDORS:

Wahroonga Belmont Reds

Robert and Jane Sherry

admin@wahroongabelmontreds.com.au | Robert 0407 589 453

Greenhills Belmont Reds

Paul and Julie Watson

julie.19watson@icloud.com | Julie 0429 230 005



INTRODUCING WAHROONGA BELMONT'S REDS

Jane and I would like to welcome you to the 2025 edition of the Belmont Red Association of Australia annual bull and this year female sale. We thank you for taking the time to read through the catalogue and hope to see you on the 1st of September.

Ten years can sound like a long time and yet it can be just a blink of an eye. A decade ago, we started on the journey of breeding Belmont Red Seedstock and marketing those genetics. The foundation females we purchased were from the Belmont research herd at Belmont Station and the first of Paul and Copland Schmidt's Corymbia herd the following year, and the first sires we purchased have now all gone.

As I sat down to write the notes on the bulls for this catalogue, I was looking back through their pedigree, many of those foundation animals are now a generation or two back in most cases. It is only now that we can assess terms like longevity, it's pleasing to see cows that calved as two-year-olds and are still producing a decade on and then be able to see on the Belmont Red database that their mums did the same thing. We were in the right place at the right time to purchase them. It is our hope that in a decade from now that the purchasers of these bulls and heifers can reflect on these animals and say they were a good buy, that they have taken our herd forward. The bulls purchased this year will influence the direction of your herd for possibly the next decade, so it is important to get it right.

We aim to provide you with as much information as possible to assist you in your choice. A full suite of EBV data with observed traits for weight, Scrotal Size, carcass scan data, Day's to Calving of the mother, her age at first calving, how many calves she has had and an Inter-Calving Interval, and her Mature Cow weight. We aim to record Flight Times on every group of calves we produce, this group never had a Flight time recorded as the recorder wasn't available at weaning time. We believe in presenting bulls that are inherently quiet and docile, even though we don't have a number beside their name this year, we generally have a good idea which ones are the flightiest and they are culled. We also give them a score at weaning in a round yard, a score of one means we can walk around them and they stand alone in the round yard, out to a score of five, where you can't get in the yard with them. We cull anything over a score of two. Quiet cattle are easy.

Belmont Reds have had a policy of all sale bulls must be DNA sire verified and have a horn/poll test. This year BREEDPLAN have added to their module for our breed allowing DNA data (Genomics) to be evaluated into the EBV's. We offer the raw data that has been submitted to BREEDPLAN as some prefer to work with that. A semen morphology test has been carried out on all bulls, collected by Stabler and Howlett Vet services Mackay and evaluated by Insight Repro, Emerald. I have added these results in the write up on each lot.

We decided from the start to try to provide some different genetics to the bull buyer, this means bringing in sires outside of the Belmont Red Association. This can be a risk as they are evaluated under the Tropical Composite register, their figures can change remarkably when they are entered onto our database, even with some linkage. After they have progeny recorded we tend to see the true picture, sometimes it works and sometimes it doesn't.

We have 11 sires represented in our draft this year, four are from outside studs and seven are home bred Sires. RJS210125 has three powerful entries in lots, 1,2,13 all with a strong suite of EBV's and match it with appearance. Another home sire RJS190065 is well represented by six of his sons, lots 3,5,14,21,22,30. All bulls have his stamp in appearance and in the EBV charts, large scrotal Size, good Carcass attributes, length and growth. RJS220045 was used for one year and sold, we got some good calves from this mating Lot 3 the standout.

Outside Sires have a good representation, SEI190229 has one son in this sale LOT 6, he is in the top 10% for Days to Calving with -7.3 so he's going to breed some fertile daughters.

TRE210675 came to our herd with some great credentials a high 400-day morphology at a light weight, high IMF with only average subcutaneous fat and he was in the top 1% for Day to Calving on the Tropical Composite database. LOT 17,19 and 31 are three of his better ones, they have high morphologies and nice clean polled head with favorable negative Day's to Calving.

MTE190074 has five sons in the sale team, Lots 27 and 28 are in the ring together, both are top 5% for retail Beef Yield and when you see them you will know why. Other bulls are Lot 16, 36 and 37.

This group of bulls have been prepared as we usually do with the help of Williams Stockfeeds pellets, this starts early in the year in self-feeders in a 40-hectare paddock of Buffel grass. They are out exercising and being normal animals most years we wean them off pellets before the sale making it easier when they travel to Gracemere and then onto their new home. We are happy with the condition the bulls are presented at the sale; their coats have a nice shine they are fit and sound in the joints and only a little cover. We ask for reports from previous purchasers as to how the bulls hold their condition from sale time to

joining, also in the following years semen testing results and libido, we always get a favorable reply. We believe the pellets eaten during their preparation have no detrimental effect on their health and longevity.

This year we are also offering 10 PTIC heifers from our yearling mated group. They will calve out towards the rear of our preferred window, we don't want to truck heavy heifers to Gracemere and then onto their destination, also the different feed in their final Trimester that can be quite a shock. They will be presented in paddock condition, fed Buffel grass and supplemented with Wilmar's Suplaflo. We offer a range of genetics with some ranking highly on the Self-Replacing Index, all are polled and five are homozygous polled.

Since 2017 we have been a provider herd of data to the QAFFI project led by Dr Ben Hayes, developing Genomic Breeding Values (GBV's) producing figures across breeds and herds. We have continued to provide data for the project; this program has recently been taken over by Base Pair Genomics. We have had GBV's generated for our heifers since the start and for our bulls for the last three years. The data we contribute from our heifers is DNA, hip height, weight, start of ovulation and accessing the first wet rebreed. This evaluation ranks our herd to other herds.

We will have GBV data available for our bulls and heifers again this year. We are hosting Elsie Vincent, Head of Genomics at Base Pair Genomics at our open day here at Wahroonga on the 18th of August. Our bulls and the PTIC heifers will be available for inspection. We also have Ian McLean from Bush Agri Business discussing business and Kai Blair, Blair Agri Advisors and Williams Stockfeeds talking about nutrition.

We are offering a \$5000.00 credit to one lucky person; you must be registered and there on the day to claim it. If you can't make it to the sale this is an opportunity to view the sale team before the day, also if you cannot make the sale, we can assist you by arranging someone to help you on the day. If you have any questions, please contact myself, and I will be only too willing to help.

Thank you. *Robert and Jane.*



INTRODUCING GREENHILLS BELMONT RED STUD

SUSTAINABLE REDS FOR GREENER PASTURES

Greenhills Belmont Reds has been breeding Belmont Red cattle successfully since the 1980s. After my parents retired, Paul and I acquired the remaining female cattle, which have since become the foundation of our stud herd. The descendants of these cows continue to thrive in our herd, consistently producing excellent calves.

We prioritize the traits that the Belmonts are known for: fertility, temperament, and tick resistance. These qualities are crucial for maximizing profitability in any cattle operation.

Our herd maintains a pregnancy rate of over 90% in all conditions. Our cows consistently produce calves yearly and often remain in our herd until they are 13 years old. This is a testament to the fertility and longevity of the breed.

Our animals have been expertly handled with horses, dogs, and quads. They are naturally well-tempered and intelligent, taking everything in their stride. Being born and bred in the lantana country in the Brisbane Valley, they have naturally acquired tick resistance from continual exposure to cattle ticks. With minimal dipping, we significantly save on chemical costs and workload.

This year, we proudly present 6 exceptional Belmont Red bulls, by 2 different sires, for the highly anticipated Belmont Red National Sale. These bulls embody 40 years of superior genetics, boasting impressive size, weight, temperament, and EBVs (Estimated Breeding Values) to support their quality. Meticulously prepared for sale on a rotation of improved pastures, these bulls began their preparation in April, grazing on the Mekong pasture and enjoying a strip-grazed Oats crop, supplemented with a protein lick. This thorough preparation ensures a seamless transition from seller to purchaser, guaranteeing that our bulls can seamlessly transition into their new roles and consistently deliver exceptional performance for many years to come!

We strive to breed highly versatile, low-maintenance, and feed-efficient animals that reduce costs and maximize profits and are incredibly easy to handle. Our track record speaks for itself - we have successfully sold vealers straight from the cow, steers to feedlots, and succeeded in carcass competitions and prime cattle shows, all with pure and crossbred Belmont Red cattle.



Please remember this: "Belmont Red bulls excel when combined with any other breed of cattle, bringing outstanding traits with them. Buy from us confidently, as our animals undergo rigorous testing, and only the best are offered for sale."

Thank You

Paul and Julie Watson



Steps To Register



Using your chosen device visit www.stocklive.com.au.



Click **BID** located next to the sale you wish to participate in.



New Users

To create an account click **REGISTER**. Fill in your details, then click **CREATE BIDDER REGISTRATION**.



You will receive an email prompting you to confirm your account, create a password, accept Bidder Account T&C's & Privacy Policy.



Congratulations! Your StockLive account has been created.

Existing Users



LOGIN & find the sale you wish to bid on, click **Request to bid** & **Accept terms to bid**.



Notified via email when your agent has approved you for bidding.

On Sale Day



Visit www.stocklive.com.au, when the sale is flashing **LIVE**, click **BID** to watch, listen & purchase.



Invoicing & delivery will be carried out as per your registration & account details by the respective selling agents.



1300 259 742

support@stocklive.com.au

www.stocklive.com.au



SALE INFORMATION

BULL SELECTION PROCESS.

All bulls in this sale must comply to the breed regulations relating to the Belmont Red Breed Standards and have observed traits for 200-day and 400-day or 600-day weights, Scrotal Size and live carcase scan recorded and analyzed through BREEDPLAN. DNA Sire verification is compulsory. Each bull must have passed a semen morphology test.

BREEDING SOUNDNESS/ SEMEN TESTING.

Each stud selling Bulls in the sale guarantees at the time of sale, their bulls are breeding and physically sound. As are part of the requirements all bulls must have passed a semen morphology and motility test. With respect to % normal morphology, as set by the ACV (Australian Cattle Vets).

- Motility Thresholds.
- Green Tick, greater than 60%
- Qualified Pass, between 40% and 59%
- Fail, less than 39%
- Morphology Thresholds.
- Green Tick, greater than 70%. Bulls with a Green Tick are recommended for single sire joining
- Qualified Pass, between 50% and 69%. Bulls with a Qualified Pass are recommended for multi-sire joining.
- Fail, below 50%

SUPPLEMENTARY SHEETS.

Supplementary sheets will be available on sale day or by request from the vendors or selling agent the week before the sale. They will include sale weight, scrotal size, semen test results and live carcase scan data.

HEALTH / VACCINATIONS.

The vendors of this sale will guarantee the bulls are fit and healthy at the time of the sale. We recommend asking each vendor for their vaccination history, they will differ slightly.

GUARANTEE.

Any bulls and females sold in this sale are guaranteed to be fertile and sound. If any issues arise, please get in touch with the agent or individual vendor and they will be only too willing to work towards a quick and acceptable resolution.

PREPERATION.

Each vendor prepares their bulls differently and this must be considered when viewing. All vendors in this sale agree that this isn't a feeding competition and we aim to offer fit bulls that are prepared for a long working life and not only prepared for sale day.

It is only the genetic merit of the animal that is heritable, not the food they eat. There is plenty of data available for purchasers to make informed decisions on the genetic merit of each animal.

OUTSIDE AGENT REBATE. (4%)

To be eligible to claim the Outside Agents Buying Rebate,

agents must:

- a. Supply written introductions to be received by the selling agent by 5:00pm Thursday 28th of August.
- b. Accompany their introduced clients to the sale.
- c. Nominate on the sale Buyers Instruction that the invoice be forwarded to them.
- d. Make settlement for purchases within 14 days of the sale.

Note: Outside Agent Buyer's Rebate will not be allowed for purchases.

- a. online through Stocklive.

These conditions will be strictly adhered to.

INSURANCE.

Agents will be present on sale day for you to arrange insurance if you choose.

REGISTRATION TRANSFER.

Upon request by the purchaser the vendor is happy to transfer the Belmont Australia registration at their cost.

PERSONAL SAFETY.

All people who attend the sale do so at their own risk and the vendors assume no liability or responsibility, legal or otherwise, for any accident or injury which may occur. It is not recommended that you enter the pens with the bulls, please talk to the respective vendors prior to entering. The bulls in this sale aren't pampered and scratched, they are taught to move off pressure so please don't expect to be able to pat any and that is never recommended in a yard full of bulls.

INSPECTION.

Bulls will be penned up by 7:30 am on sale day for inspection or prior to sale by appointment with the relevant vendor. All Bulls will be at CQLX over the weekend in larger pens.

DELIVERY.

Each vendor at the sale will work with the sale agent and purchaser of their stock to coordinate the best possible delivery option of your new purchase. It may not be to your door but we will do our best to get them to the closest convenient location.

The vendors of this sale recommend that when your new purchase arrives that he is unloaded to a yard with some other stock. This is highly recommended if you have only made one purchase and he has travelled on his own.

If you have purchased bulls from different vendors, please be aware that the bulls may not have been in the same yard until they are dropped off at their destination so a period of familiarization will be needed.

DISCLAIMER.

While all due care and attention has been paid to the accuracy in the compilation of this catalogue, neither the Vendors nor the Selling Agents or representative(s) thereof assume any responsibility whatsoever for the correctness, use of interpretation of the information on animals included in this catalogue.

PERCENTILE BANDS for 2023 BORN CALVES

PERCENTILE BAND	GL	BW	200 WT	400 WT	600 WT	MC WT	MILK	SS	DC	C WT	EMA	RIB	RUMP	RBV	IMF	SRI \$	TI \$	FT	SF
TOP VALUE	-6.1	-3.4	+37	+51	+79	+116	+20	+5.8	-12.4	+56	+6.5	+2.3	+5.3	+1.8	+1.0	+115	+77	+0.57	-0.43
TOP 1%	-3.5	-1.3	+32	+43	+66	+96	+18	+4.1	-9.7	+47	+5.2	+1.4	+3.5	+1.2	+0.7	+95	+64	+0.41	-0.27
TOP 5%	-3.0	-0.2	+29	+37	+56	+76	+16	+3.4	-7.4	+40	+4.3	+0.9	+2.6	+1.0	+0.5	+75	+53	+0.29	-0.16
TOP 10%	-2.4	+0.4	+26	+33	+50	+66	+15	+3.0	-6.3	+37	+3.9	+0.6	+2.1	+0.9	+0.4	+68	+48	+0.21	-0.12
TOP 15%	-2.1	+0.8	+25	+31	+46	+59	+14	+2.7	-5.5	+34	+3.6	+0.4	+1.8	+0.8	+0.4	+61	+44	+0.18	-0.09
TOP 20%	-1.8	+1.1	+23	+29	+44	+54	+13	+2.5	-4.9	+32	+3.4	+0.3	+1.6	+0.8	+0.4	+58	+42	+0.15	-0.06
TOP 25%	-1.7	+1.3	+22	+27	+41	+51	+13	+2.3	-4.4	+30	+3.3	+0.2	+1.3	+0.7	+0.3	+54	+40	+0.12	-0.04
TOP 30%	-1.5	+1.6	+21	+26	+39	+48	+12	+2.2	-3.8	+28	+3.1	+0.1	+1.1	+0.7	+0.3	+51	+38	+0.10	-0.03
TOP 35%	-1.4	+1.8	+20	+24	+37	+45	+11	+2.1	-3.4	+27	+2.9	-0.1	+1.0	+0.7	+0.3	+49	+36	+0.08	-0.01
TOP 40%	-1.3	+2.0	+19	+23	+36	+42	+11	+1.9	-3.0	+26	+2.8	-0.2	+0.8	+0.6	+0.2	+47	+35	+0.07	+0.01
TOP 45%	-1.2	+2.1	+19	+22	+33	+39	+10	+1.8	-2.7	+24	+2.7	-0.3	+0.7	+0.6	+0.2	+45	+33	+0.05	+0.02
TOP 50%	-1.1	+2.3	+18	+21	+32	+36	+10	+1.7	-2.4	+23	+2.5	-0.3	+0.6	+0.5	+0.2	+43	+32	+0.03	+0.04
TOP 55%	-1.0	+2.5	+17	+19	+30	+34	+9	+1.6	-2.0	+21	+2.4	-0.4	+0.5	+0.5	+0.2	+41	+30	+0.02	+0.06
TOP 60%	-0.9	+2.7	+16	+18	+28	+31	+9	+1.5	-1.7	+20	+2.3	-0.5	+0.3	+0.5	+0.1	+38	+29	+0.00	+0.07
TOP 65%	-0.8	+2.9	+15	+17	+27	+28	+8	+1.4	-1.3	+19	+2.1	-0.6	+0.2	+0.4	+0.1	+36	+28	-0.02	+0.09
TOP 70%	-0.7	+3.0	+14	+16	+25	+25	+8	+1.2	-1.1	+18	+2.0	-0.6	+0.1	+0.4	+0.1	+34	+26	-0.04	+0.11
TOP 75%	-0.6	+3.3	+13	+15	+23	+22	+7	+1.1	-0.7	+16	+1.8	-0.7	+0.0	+0.3	+0.1	+31	+24	-0.06	+0.13
TOP 80%	-0.4	+3.5	+12	+13	+20	+18	+6	+1.0	-0.2	+15	+1.7	-0.8	-0.2	+0.3	+0.0	+29	+22	-0.08	+0.15
TOP 85%	-0.2	+3.8	+11	+12	+17	+13	+6	+0.8	+0.3	+12	+1.5	-0.9	-0.4	+0.2	+0.0	+26	+20	-0.10	+0.18
TOP 90%	+0.1	+4.2	+9	+10	+14	+8	+5	+0.5	+0.9	+10	+1.2	-1.0	-0.6	+0.1	-0.1	+22	+18	-0.13	+0.21
TOP 95%	+0.6	+4.6	+7	+6	+10	-1	+4	+0.1	+2.4	+7	+0.9	-1.2	-0.9	+0.0	-0.2	+15	+14	-0.17	+0.29
TOP 99%	+1.7	+5.6	+3	-2	-1	-21	+2	-0.6	+5.1	+0	+0.1	-1.7	-1.7	-0.3	-0.3	-6	+6	-0.23	+0.37
LOW VALUE	+3.0	+6.5	-3	-10	-13	-43	-2	-1.5	+10.8	-8	-1.4	-2.1	-2.4	-0.5	-0.5	-19	-3	-0.30	+0.53

GL Gestation Length (days) BW Birth Wt (kg) 200 WT 200 Day Wt (kg) 400 WT 400 Day Wt (kg) 600 WT 600 Day Wt (kg) MC WT Mat Cow Wt (kg) MILK Milk (kg) SS Scrotal Size (cm) DC Days to Calving (days)
C WT Carcase Wt (kg) EMA Eye Muscle Area (sq cm) RIB Rib Fat (mm) RUMP Rump Fat (mm) RBV Rib Fat (mm) IMF IMF (%) SRI \$ Self Replacing Index (\$) TI \$ Terminal Index (\$) FT Flight Time (secs) SF Shear Force (kgs)

SELECTION INDICES

Belmont Red selection indices relate to a typical Belmont Red herd running cattle in a sub-tropical environment.

Index values are reported as EBVs, in units of relative earning capacity (\$'s) for a given market. They reflect both the short-term profit generated by a sire through the sale of his progeny, and the longer-term profit generated by his daughters in a

self-replacing cow herd. A selection index combines the EBVs with economic information (costs and returns) for specific market and production systems to rank animals based on relative profit values. Note that different types of animals can give similar profit values, so consideration should be given to both the index and the component EBVs when selecting animals for a particular production system.

TBTS Self Replacing IMF Index



The assessed target trait importance for breeding

The target trait importance for breeding, assessed for the commercial production system described



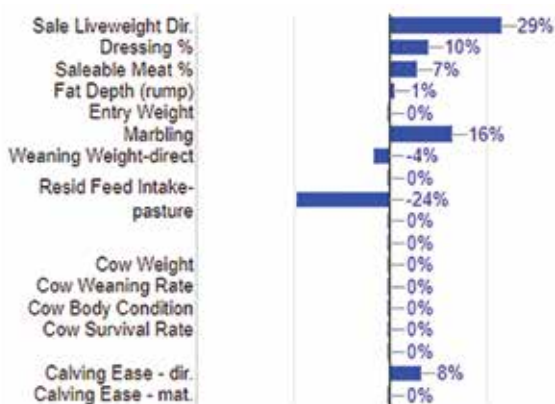
The EBV composition of the index

The % emphases on EBVs that is best for your targeted trait importance

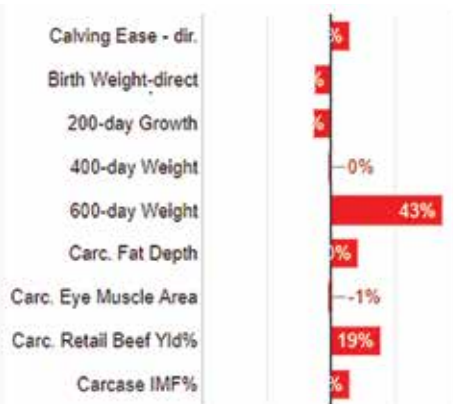
Self Replacing Index (\$) - Estimates the genetic differences between animals in net profitability per cow joined for an example self-replacing commercial herd (run in sub-tropical environment). This index assumes that

the steer progeny are pasture grown and finished while targeting 600 kg live weight (320 kg HSCW and 10 mm P8 fat depth) at 30 months of age. Maternal traits are of importance as selected daughters are retained for breeding.

TBTS Terminal Index



Terminal Index (\$) - Estimates the genetic differences between animals in net profitability per cow joined for an example Bos indicus commercial herd (run in a sub-tropical environment) using Belmont Red bulls as terminal sires. This index assumes that all progeny are pasture grown and finished. Steers target 600 kg live weight (320 kg HSCW



and 10 mm P8 fat depth) at 29 months of age, and heifers target 520 kg live weight (270 kg HSCW and 12 mm P8 fat depth) at 27 months of age.

Note that \$Index Values for individual animals are sensitive to the assumptions used in the BreedObject analysis used to calculate the selection index.

**LOT
1**

WAHROONGA 240117

ID: RJS240117

TATTOO: 117

HORN: POLL

DOB: 31/10/2023

REGO STATUS: REGISTERED

GRADE: PURE BR

POLL TEST: HP



SEI090377 SEIFERT TEDSTAR
SEI130061 SEIFERT BELMONT REDS 130061
SEI080322 SEIFERT 08 0322

SIRE: RJS210125 WAHROONGA 210125

COR19 CORYMBIA GENERIC BR BULL
COR110017 CORYMBIA 110017
COR18 CORYMBIA GENERIC COW

ANIMAL: RJS240117 WAHROONGA 0117

RJSMS01 TRE090103 TRE100039

DAM: RJS150084 WAHROONGA 150084

RJSCSIRO28 WAHROONGA CSIRO 28

NOTES: A deep thick, dark red bull with sire potential. 117 has excellent fertility, powerful in the flesh and powerful data to back him up, he is in the top 5% of the breed for the Self-Replacing Index. He is out of a trusted cow that goes back to the CSIRO herd at Belmont Research station, she had nine calves in a row on a 358-day interval. His sire RJS210125 passed on all that is good about him to this one. 117 had a morphology result of 86% normal.

June 2024 Belmont Red GROUP BREEDPLAN

	GL	BW	200	400	600	MC	Milk	SS	DC	CW	EMA	Rib	Rump	RBY	IMF	FL	\$ Index Value	
																	SRI	TI
EBV		2.9	21	25	48	56	9	3.7	-5.7	32	3.5	-0.8	0.8	0.5	0.2	0.14	+78	+47
Acc	%	53%	71%	71%	74%	67%	49%	71%	39%	57%	51%	52%	50%	40%	46%	46		
Rank			30	35	15	20		3	15	20	20		40		40	25	4	15

Breed Avg. EBVs for 2023 Born Calves

EBV	-1.1	+2.3	+18	+21	+32	+37	+10	+1.7	-2.5	+23	+2.6	-0.3	+0.7	+0.5	+0.2	+0.04	+44	+32
-----	------	------	-----	-----	-----	-----	-----	------	------	-----	------	------	------	------	------	-------	-----	-----

Traits Observed: 200WT,400WT,600WT,SS,FAT,EMA,IMF

Purchaser:

\$

**LOT
2**

WAHROONGA 240109

ID: RJS240109

TATTOO: 109

HORN: POLL

DOB: 06/11/2023

REGO STATUS: REGISTERED

GRADE: PURE BR

POLL TEST: HP



SEI090377 SEIFERT TEDSTAR
SEI130061 SEIFERT BELMONT REDS 130061
SEI080322 SEIFERT 08 0322

SIRE: RJS210125 WAHROONGA 210125

COR19 CORYMBIA GENERIC BR BULL
COR110017 CORYMBIA 110017
COR18 CORYMBIA GENERIC COW

ANIMAL: RJS240109 WAHROONGA 240109

RJSMS01 TRE090103 TRE100039

DAM: RJS150082 WAHROONGA 150082

RJSCSIRO27 WAHROONGA CSIRO 27

NOTES: Solid and powerful just like his sire RJS210125, high fertility figures and from a strong dam that had nine calves at a 355-day interval, most of those days were in dry times. A solid set of EBV's rank him in the top 20% of the breed on the Self-Replacing Index. 109 had a morphology result of 78% normal.

June 2024 Belmont Red GROUP BREEDPLAN

	GL	BW	200	400	600	MC	Milk	SS	DC	CW	EMA	Rib	Rump	RBY	IMF	FL	\$ Index Value	
																	SRI	TI
EBV		3.4	23	29	49	63	10	4.1	-3.3	34	2.7	-1.1	0.4	0.6	0.1	0.13	+63	+46
Acc	%	53%	70%	71%	73%	67%	47%	70%	36%	56%	49%	51%	49%	39%	44%	45		
Rank			20	20	15	15		1	40	15			40			25	15	15
Breed Avg. EBVs for 2023 Born Calves																		
EBV	-1.1	+2.3	+18	+21	+32	+37	+10	+1.7	-2.5	+23	+2.6	-0.3	+0.7	+0.5	+0.2	+0.04	+44	+32

Traits Observed: 200WT,400WT,600WT,SS,FAT,EMA,IMF

Purchaser:

\$

**LOT
3**

WAHROONGA 240199

ID: RJS240199

TATTOO: 199

HORN: SCURR

DOB: 04/12/2023

REGO STATUS: REGISTERED

GRADE: PURE BR

POLL TEST: HP



SEI090377 SEIFERT TEDSTAR
SEI130061 SEIFERT BELMONT REDS 130061
SEI080322 SEIFERT 08 0322

SIRE: RJS190065 WAHROONGA 190065

RJSMS01 TRE090103 TRE100039
RJS150088 WAHROONGA 150088
RJSCSIRO30 WAHROONGA CSIRO 30

ANIMAL: RJS240199 WAHROONGA 0199

SEI120051 SEIFERT 120051
SEI140171 SEIFERT 140171
SEI080214 SEIFERT 08 0214

DAM: RJS190160 WAHROONGA 190160

COR19 CORYMBIA GENERIC BR BULL
COR110013 CORYMBIA 110013
COR18 CORYMBIA GENERIC COW

NOTES: A stylish scurred son of RJS190065 that carries plenty of flesh. His indices are in the top 15% for the Self Replacing and top 10% for the Terminal Index. 199's dam has given us four calves at 405 days due to calving out of season and held to sync with the herd, she is PTIC. A great Morphology test result of 93% normal.

June 2024 Belmont Red GROUP BREEDPLAN

	GL	BW	200	400	600	MC	Milk	SS	DC	CW	EMA	Rib	Rump	RBY	IMF	FL	\$ Index Value	
																	SRI	TI
EBV	-1.6	3.9	24	28	52	66	16	3.6	-2.5	37	4.8	-0.4	0.7	0.9	0.2	0.11	+62	+50
Acc	28%	55%	71%	72%	75%	68%	51%	72%	44%	59%	56%	59%	58%	46%	53%	52		
Rank	30		20	25	8	10	3	4		10	2			9	40	30	15	8

Breed Avg. EBVs for 2023 Born Calves

EBV	-1.1	+2.3	+18	+21	+32	+37	+10	+1.7	-2.5	+23	+2.6	-0.3	+0.7	+0.5	+0.2	+0.04	+44	+32
------------	------	------	-----	-----	-----	-----	-----	------	------	-----	------	------	------	------	------	-------	-----	-----

Traits Observed: 200WT,400WT,600WT,SS,FAT,EMA,IMF

Purchaser:

\$

**LOT
4**

WAHROONGA 240033

ID: RJS240033

TATTOO: 33

HORN: POLL

DOB: 25/10/2023

REGO STATUS: REGISTERED

GRADE: PURE BR

POLL TEST: HP



SEI090377 SEIFERT TEDSTAR
SEI130061 SEIFERT BELMONT REDS 130061
SEI080322 SEIFERT 08 0322

SIRE: RJS220045 WAHROONGA 220045

COR19 CORYMBIA GENERIC BR BULL
COR130002 CORYMBIA 130002
COR18 CORYMBIA GENERIC COW

ANIMAL: RJS240033 WAHROONGA 240033

SEI130539 SEIFERT 130539
SEI150143 SEIFERT BELMONT 150143
MON020060 MONTPELLIER 02-60

DAM: RJS220158 WAHROONGA 220158

RJSGENSIRE WAHROONGA MT EUGENE GENERIC SIRE
RJS170100 WAHROONGA 0100
COR060009 CORYMBIA 060009

NOTES: A strong polled bull that was a heifers first calf, she has had two and is PTIC, the sire RJS220045 we used as a yearling. 33's index values are very impressive with both sitting inside the top 10% for the breed. He will be a big bull when he is fully grown and has a morphology test result of 88%. We intend to retain semen from 33 for in herd use.

June 2024 Belmont Red GROUP BREEDPLAN

	GL	BW	200	400	600	MC	Milk	SS	DC	CW	EMA	Rib	Rump	RBY	IMF	FL	\$ Index Value	
																	SRI	TI
EBV	-1.8	3.4	23	31	53	62	11	2.8	-3.8	40	3.7	-1.2	-0.4	0.8	0.2	0.09	+72	+52
Acc	27%	52%	68%	68%	72%	64%	44%	69%	39%	55%	51%	52%	51%	41%	47%	45		
Rank	20		20	15	8	15	35	15	30	5	15			15	40	35	7	6

Breed Avg. EBVs for 2023 Born Calves

EBV	-1.1	+2.3	+18	+21	+32	+37	+10	+1.7	-2.5	+23	+2.6	-0.3	+0.7	+0.5	+0.2	+0.04	+44	+32
------------	------	------	-----	-----	-----	-----	-----	------	------	-----	------	------	------	------	------	-------	-----	-----

Traits Observed: 200WT,400WT,600WT,SS,FAT,EMA,IMF

Purchaser:

\$

**LOT
5**

WAHROONGA 240209

ID: RJS240209

TATTOO: 209

HORN: SCURR

DOB: 04/11/2023

REGO STATUS: REGISTERED

GRADE: PURE BR

POLL TEST: HP



SEI090377 SEIFERT TEDSTAR
SEI130061 SEIFERT BELMONT REDS 130061
SEI080322 SEIFERT 08 0322

SIRE: RJS190065 WAHROONGA 190065

RJSMS01 TRE090103 TRE100039
RJS150088 WAHROONGA 150088
RJSCSIRO30 WAHROONGA CSIRO 30

ANIMAL: RJS240209 WAHROONGA 0209

SEI120051 SEIFERT 120051
SEI140171 SEIFERT 140171
SEI080214 SEIFERT 08 0214

DAM: RJS190162 WAHROONGA 190162

COR19 CORYMBIA GENERIC BR BULL
COR110023 CORYMBIA 110023
COR18 CORYMBIA GENERIC COW

NOTES: Another RJS190065 calf that ranks highly for fertility and carcase attributes, his low birthweight EBV means 209 is well suited for heifers. The dam is an honest breeder, like a few dams in this catalogue she calved out of season in 2021, her Inter-Calving Interval has suffered, it sits at 422 days for the 4 calves to date and she is PTIC. 209 gave an excellent sample in May recording a morphology of 93% normal.

June 2024 Belmont Red GROUP BREEDPLAN

	GL	BW	200	400	600	MC	Milk	SS	DC	CW	EMA	Rib	Rump	RBY	IMF	FL	\$ Index Value	
																	SRI	TI
EBV	-1.4	1.7	14	18	26	38	15	3.4	-4.4	24	5	-0.2	0.7	0.9	0.2	0.09	+49	+32
Acc	28%	56%	72%	72%	75%	69%	52%	73%	45%	59%	57%	60%	58%	46%	53%	51		
Rank	35	35					6	5	25		2	40		9	40	35	35	

Breed Avg. EBVs for 2023 Born Calves

EBV	-1.1	+2.3	+18	+21	+32	+37	+10	+1.7	-2.5	+23	+2.6	-0.3	+0.7	+0.5	+0.2	+0.04	+44	+32
------------	------	------	-----	-----	-----	-----	-----	------	------	-----	------	------	------	------	------	-------	-----	-----

Traits Observed: 200WT,400WT,600WT,SS,FAT,EMA,IMF

Purchaser:

\$

**LOT
6**

WAHROONGA 240075

ID: RJS240075

TATTOO: 75

HORN: SCURR

DOB: 14/11/2023

REGO STATUS: REGISTERED

GRADE: PURE BR

POLL TEST: HP



SEI130061 SEIFERT BELMONT REDS 130061
SEI170105 SEIFERT BELMONT REDS 170105
SEI120184 SEIFERT 120184

SIRE: SEI190229 SEIFERT BELMONT 190229

MON030017 MONTPELLIER 03-17
MON090040 MONTPELLIER 09-40
MON060216 MONTPELLIER 06-30

ANIMAL: RJS240075 WAHROONGA 240075

SEI090377 SEIFERT TEDSTAR
SEI130061 SEIFERT BELMONT REDS 130061
SEI080322 SEIFERT 08 0322

DAM: RJS210048 WAHROONGA 210048

COR19 CORYMBIA GENERIC BR BULL
COR110025 CORYMBIA 110025
COR18 CORYMBIA GENERIC COW

NOTES: A scurred bull with great fertility and fat cover data. A SEI190229 son, 75 ranks in the top 25% of the breed and top 10% for Days to Calving with -7.3. His dam wasn't mated as a yearling but has now had two on the trot and is PTIC. He is suitable to use over yearling heifers and gave a sample a near perfect sample in late May of 96% normal.

June 2024 Belmont Red GROUP BREEDPLAN

	GL	BW	200	400	600	MC	Milk	SS	DC	CW	EMA	Rib	Rump	RBY	IMF	FL	\$ Index Value	
																	SRI	TI
EBV	-1.1	2.7	20	24	30	31	15	1.7	-7.3	25	2.3	0.4	2	0.5	0.5	0.08	+65	+34
Acc	31%	56%	72%	72%	75%	68%	53%	73%	46%	60%	57%	59%	57%	47%	53%	56		
Rank			35	35			6		6			15	15		4	35	15	

Breed Avg. EBVs for 2023 Born Calves

EBV	-1.1	+2.3	+18	+21	+32	+37	+10	+1.7	-2.5	+23	+2.6	-0.3	+0.7	+0.5	+0.2	+0.04	+44	+32
------------	------	------	-----	-----	-----	-----	-----	------	------	-----	------	------	------	------	------	-------	-----	-----

Traits Observed: 200WT,400WT,600WT,SS,FAT,EMA,IMF

Purchaser:

\$

**LOT
7**

GREENHILLS 240002

ID: GRH240002

PP

TATTOO: 2

HORN: POLL

DOB: 16/07/2023

REGO STATUS: REGISTERED

GRADE: PURE BR

POLL TEST: PP



TRE100173 TREMERE 100173

MTE15B131 MT EUGENE 15B131

BEL100340 BELMONT 100340

SIRE: MTE200398 MT EUGENE 200398

MTE070240 MT EUGENE 07-240

MTE140623 MT EUGENE 140623

MTE040617 MT EUGENE 04-617

ANIMAL: GRH240002 GREENHILLS 240002

SEI120021 SEIFERT GERONIMO

SEI170145 SEIFERT BELMONT 170145

SEI140408 SEIFERT 140408

DAM: GRH200010 GREENHILLS 200010

5ST040968 FIVE STAR GOVERNOR

LYN080063 LYNFIELD AKI

LYN050609 LYNFIELD ISSY 6

NOTES: This dark red, homozygous polled bull demonstrates exceptional body length, a well-balanced frame, a clean underline, and an excellent temperament. His EBV's rank him in the top 6% for 200-day growth, top 20% for 400-day growth, and top 8% for 600-day growth. Additionally, he is within the top 20% for carcass weight, the top 25% for retail beef yield, and ranks in the top 20% on the Terminal Index. He is out of a high-quality young cow known for consistently producing good weaners each year. We think a lot of this bull, and he was exhibited at Farmfest this year.

June 2024 Belmont Red GROUP BREEDPLAN

	GL	BW	200	400	600	MC	Milk	SS	DC	CW	EMA	Rib	Rump	RBY	IMF	FL	\$ Index Value	
																	SRI	TI
EBV	-1.1	4.2	28	29	52	55	9	1.5	3.3	33	1.9	-0.6	-0.1	0.7	0	--	+29	+43
Acc	40%	74%	70%	69%	73%	65%	34%	68%	31%	57%	50%	54%	52%	40%	45%			
Rank			6	20	8	20				20				25				20

Breed Avg. EBVs for 2023 Born Calves

EBV	-1.1	+2.3	+18	+21	+32	+37	+10	+1.7	-2.5	+23	+2.6	-0.3	+0.7	+0.5	+0.2	+0.04	+44	+32
------------	------	------	-----	-----	-----	-----	-----	------	------	-----	------	------	------	------	------	-------	-----	-----

Traits Observed: BWT,200WT(x2),400WT(x2),600WT(x2),SS,FAT,EMA,IMF

Purchaser:

\$

**LOT
8**

GREENHILLS 240004

ID: GRH240004

TATTOO: 4

HORN: POLL

DOB: 24/07/2023

REGO STATUS: REGISTERED

GRADE: PURE BR

POLL TEST: HP



TRE100173 TREMERE 100173

MTE15B131 MT EUGENE 15B131

BEL100340 BELMONT 100340

SIRE: MTE200398 MT EUGENE 200398

MTE070240 MT EUGENE 07-240

MTE140623 MT EUGENE 140623

MTE040617 MT EUGENE 04-617

ANIMAL: GRH240004 GREENHILLS 240004

COR040030 CORYMBIA 04-30

SEI080251 SEIFERT 08 0251SEI

COR030030 CORYMBIA 0030

DAM: GRH110023 GREENHILLS 110023

TRE010553 TREMERE 010553

HAP050111 HAPPY HILL 05-111

HAP020050 HAPPY HILL 02-50

NOTES: A dark red, sleek-coated, polled bull, displaying notable presence and excellent conformation alongside exceptional carcass attributes. He ranks within the top 15% for 200-day growth and is in the top 7% for both 400-day and 600-day growth, as well as the top 15% for Carcase Weight and Retail Beef Yield, placing him among the top 10% on the Terminal Index.

He is out of one of our premier cows, who is currently in calf with her thirteenth calf and has consistently produced a calf every year since the age of two. His recent semen evaluation was exceptional, recording 80% motility and 88% morphology, underscoring his outstanding fertility.

June 2024 Belmont Red GROUP BREEDPLAN

	GL	BW	200	400	600	MC	Milk	SS	DC	CW	EMA	Rib	Rump	RBY	IMF	FL	\$ Index Value	
																	SRI	TI
EBV	-0.9	4	25	35	55	74	8	0.8	2.7	36	2.2	-0.8	-0.5	0.7	0	--	+35	+46
Acc	41%	75%	70%	69%	73%	65%	42%	69%	34%	57%	49%	52%	50%	39%	44%			
Rank			15	7	6	6				15				25				15

Breed Avg. EBVs for 2023 Born Calves

EBV	-1.1	+2.3	+18	+21	+32	+37	+10	+1.7	-2.5	+23	+2.6	-0.3	+0.7	+0.5	+0.2	+0.04	+44	+32
------------	------	------	-----	-----	-----	-----	-----	------	------	-----	------	------	------	------	------	-------	-----	-----

Traits Observed: BWT,200WT(x2),400WT(x2),600WT(x2),SS,FAT,EMA,IMF

Purchaser:

\$

**LOT
9**

GREENHILLS 240017

ID: GRH240017

TATTOO: 17

HORN: POLL

DOB: 29/08/2023

REGO STATUS: REGISTERED

GRADE: PURE BR

POLL TEST: HP



TRE100173 TREMERE 100173

MTE15B131 MT EUGENE 15B131

BEL100340 BELMONT 100340

SIRE: MTE200398 MT EUGENE 200398

MTE070240 MT EUGENE 07-240

MTE140623 MT EUGENE 140623

MTE040617 MT EUGENE 04-617

ANIMAL: GRH240017 GREENHILLS 240017

VAL90V626 VALINOR 626

GRN930029 GREENHILLS 93-29

CUN790409 CUNNINGHAM B409

DAM: GRH190004 GREENHILLS 190004 (AI)

TRE010553 TREMERE 010553

HAP070181 HAPPY HILL 07-181

HAP030063 HAPPY HILL 03-63

NOTES: This outstanding young sire is well-suited for breeders seeking increased size, bone, and weight, with a level topline. He features a sleek coat, excellent conformation, an impeccable temperament, and is extremely fertile, with a 400-day scrotal measurement of 39cm, and he semen tested crushside at 80% motility and morphology of 91%.

He ranks within the top 1% of the breed for 200- and 600-day growth, top 2% for 400-day growth and Carcase Weight, and top 9% for Retail Beef Yield, placing him in the top 5% on the Terminal Index.

Weaned at seven and a half months with a weight of 320 kg directly off his dam, he reached 524 kg by 400 days of age, recording 6 mm rib fat and 9 mm rump fat on grass alone.

He descends from an exceptional cow line tracing back to Greenhill Generator and is sired by a Mt Eugene bull recognised for superior carcass traits.

June 2024 Belmont Red GROUP BREEDPLAN

	GL	BW	200	400	600	MC	Milk	SS	DC	CW	EMA	Rib	Rump	RBY	IMF	FL	\$ Index Value	
																	SRI	TI
EBV	-0.7	5.9	33	42	70	89	7	2.3	4.6	45	2.5	-0.9	-0.6	0.9	0	--	+36	+53
Acc	40%	74%	70%	69%	73%	65%	35%	67%	32%	57%	48%	51%	48%	38%	42%			
Rank			1	2	1	2		25		2				9				5

Breed Avg. EBVs for 2023 Born Calves

EBV	-1.1	+2.3	+18	+21	+32	+37	+10	+1.7	-2.5	+23	+2.6	-0.3	+0.7	+0.5	+0.2	+0.04	+44	+32
-----	------	------	-----	-----	-----	-----	-----	------	------	-----	------	------	------	------	------	-------	-----	-----

Traits Observed: BWT,200WT(x2),400WT(x2),600WT(x2),SS,FAT,EMA,IMF

Purchaser:

\$

**LOT
10**

GREENHILLS 240012

ID: GRH240012

TATTOO: 12

HORN: POLL

DOB: 11/08/2023

REGO STATUS: REGISTERED

GRADE: PURE BR

POLL TEST: HP



TRE100173 TREMERE 100173

MTE15B131 MT EUGENE 15B131

BEL100340 BELMONT 100340

SIRE: MTE200398 MT EUGENE 200398

MTE070240 MT EUGENE 07-240

MTE140623 MT EUGENE 140623

MTE040617 MT EUGENE 04-617

ANIMAL: GRH240012 GREENHILLS 240012

COR090014 CORYMBIA 090014

COR150019 CORYMBIA SEIFERT 150019

COR090003 CORYMBIA 090003

DAM: RJS190106 WAHROONGA 190106

COR17 CORYMBIA GENERIC BR BULL

COR140043 CORYMBIA 140043

COR16 CORYMBIA GENERIC BR DAM

NOTES: GRH240012 is a dark red, heavy-boned bull who stands out for his commanding frame, structural soundness, and notably clean underline. Distinguished by his exceptional growth trajectory, he ranks comfortably in the top 10% of the breed for both 200- and 400-day growth EBVs, and soars into the elite top 4% for 600-day growth, making him a standout performer for those seeking to increase growth and scale in their herds. This sire promises to impart significant size and weight to his progeny, while also bringing the invaluable benefits of tick resistance and enhanced fertility, crucial attributes for herds in demanding environments. Bred from a high-performing Wahrenonga cow and sired by a renowned Mt Eugene bull, GRH240012 is the product of a thoughtful and powerful genetic cross, delivering both maternal reliability and superior carcass merit.

June 2024 Belmont Red GROUP BREEDPLAN

	GL	BW	200	400	600	MC	Milk	SS	DC	CW	EMA	Rib	Rump	RBY	IMF	FL	\$ Index Value	
																	SRI	TI
EBV	-1.3	3.4	27	36	59	66	9	1.6	4.5	33	1.9	-1.4	-0.7	0.8	-0.1	-0.04	+33	+53
Acc	38%	73%	70%	69%	72%	65%	37%	68%	34%	57%	49%	52%	50%	39%	44%	28		
Rank	40		8	6	4	10				20				15				5

Breed Avg. EBVs for 2023 Born Calves

EBV	-1.1	+2.3	+18	+21	+32	+37	+10	+1.7	-2.5	+23	+2.6	-0.3	+0.7	+0.5	+0.2	+0.04	+44	+32
------------	------	------	-----	-----	-----	-----	-----	------	------	-----	------	------	------	------	------	-------	-----	-----

Traits Observed: BWT,200WT(x2),400WT(x2),600WT(x2),SS,FAT,EMA,IMF

Purchaser:

\$

**LOT
11**

GREENHILLS 240023

ID: GRH240023

TATTOO: 23

HORN: POLL

DOB: 09/09/2023

REGO STATUS: REGISTERED

GRADE: PURE BR

POLL TEST: HP



TRE100173 TREMERE 100173

MTE15B131 MT EUGENE 15B131

BEL100340 BELMONT 100340

SIRE: MTE200398 MT EUGENE 200398

MTE070240 MT EUGENE 07-240

MTE140623 MT EUGENE 140623

MTE040617 MT EUGENE 04-617

ANIMAL: GRH240023 GREENHILLS 240023

5ST020815 FIVE STAR BRANDON

LYN090006 LYNFIELD BRYN

LYN050614 LYNFIELD NELL 6

DAM: GRH140052 GREENHILLS 0052

TRE010553 TREMERE 010553

HAP060160 HAPPY HILL 06-160

HAP030064 HAPPY HILL 03-64

NOTES: This impressive young sire stands out for his striking presence and impeccable conformation, complemented by a glossy, sleek coat. Not only is he visually appealing, but he is also exceptionally quiet-natured, making him a pleasure to handle. His dam has proven herself year after year, consistently producing quality weaners and demonstrating outstanding maternal reliability—several of her daughters have been retained in the breeding herd for their merit. He demonstrates robust early growth, ranking within the top 25% for 200-day growth and an even more impressive top 15% for 600-day growth. With additional strengths in carcass traits, he sits inside the top 30% for carcass weight and top 25% for retail beef yield, and his terminal index places him among the breed's top 30%. This is a bull bred to deliver eye appeal, temperament, and performance—an ideal selection for herds seeking genetic progress across multiple fronts, with the added assurance of a proven maternal line.

June 2024 Belmont Red GROUP BREEDPLAN

	GL	BW	200	400	600	MC	Milk	SS	DC	CW	EMA	Rib	Rump	RBY	IMF	FL	\$ Index Value	
																	SRI	TI
EBV	-0.7	3.4	22	22	46	46	9	1.1	4.1	28	1.8	-1.3	-1.2	0.7	0	--	+20	+39
Acc	41%	74%	70%	69%	73%	66%	39%	68%	33%	58%	48%	52%	49%	39%	43%			
Rank			25		15	35				30				25				30

Breed Avg. EBVs for 2023 Born Calves

EBV	-1.1	+2.3	+18	+21	+32	+37	+10	+1.7	-2.5	+23	+2.6	-0.3	+0.7	+0.5	+0.2	+0.04	+44	+32
-----	------	------	-----	-----	-----	-----	-----	------	------	-----	------	------	------	------	------	-------	-----	-----

Traits Observed: BWT,200WT(x2),400WT(x2),600WT(x2),SS,FAT,EMA,IMF

Purchaser:

\$

**LOT
12**

GREENHILLS 240015

ID: GRH240015

TATTOO: 15

HORN: POLL

DOB: 20/08/2023

PP

REGO STATUS: REGISTERED

GRADE: PURE BR

POLL TEST: PP



GRH160013 GREENHILLS 160013
GRH180019 GREENHILLS 180019
GRH140045 GREENHILLS 0045

SIRE: GRH210039 GREENHILLS 210039

GRN930029 GREENHILLS 93-29
GRH190010 GREENHILLS 190010
GRH110023 GREENHILLS 110023

ANIMAL: GRH240015 GREENHILLS 240015

SEI120021 SEIFERT GERONIMO
SEI170145 SEIFERT BELMONT 170145
SEI140408 SEIFERT 140408

DAM: GRH210044 GREENHILLS 210044

LYN090006 LYNFIELD BRYN
GRH140052 GREENHILLS 0052
HAP060160 HAPPY HILL 06-160

NOTES: This stylish, homozygous polled bull impresses with his calm temperament and is complemented by a well-balanced frame and tidy underline. He stands in the top 20% of the breed for 200-day growth, having weighed an impressive 282kg at just 7 months old out of a first-calf heiferóda testament to his early vigour and genetic potential. He boasts a top 30% milk EBV, offering valuable maternal traits for those aiming to strengthen their herd's productivity. Further adding to his appeal, he records above-average results for both scrotal circumference and retail beef yieldómarkers of fertility and carcass quality. Sired by GRH210039 and out of a promising young dam now heavy with her third calf, GRH24 0015 represents an outcross opportunity for other studs seeking to inject fresh genetic

June 2024 Belmont Red GROUP BREEDPLAN

	GL	BW	200	400	600	MC	Milk	SS	DC	CW	EMA	Rib	Rump	RBY	IMF	FL	\$ Index Value	
																	SRI	TI
EBV	-0.4	3.8	23	16	33	29	12	1.9	1.6	22	1.9	-0.6	-0.2	0.6	0	--	+12	+23
Acc	39%	72%	69%	69%	73%	65%	35%	68%	34%	58%	51%	55%	53%	41%	46%			
Rank			20				30	40						40				

Breed Avg. EBVs for 2023 Born Calves

EBV	-1.1	+2.3	+18	+21	+32	+37	+10	+1.7	-2.5	+23	+2.6	-0.3	+0.7	+0.5	+0.2	+0.04	+44	+32
------------	------	------	-----	-----	-----	-----	-----	------	------	-----	------	------	------	------	------	-------	-----	-----

Traits Observed: BWT,200WT(x2),400WT(x2),600WT(x2),SS,FAT,EMA,IMF

Purchaser:

\$

**LOT
13**

WAHROONGA 240249

ID: RJS240249

TATTOO: 249

HORN: POLL

DOB: 13/11/2023

REGO STATUS: REGISTERED

GRADE: 3RD CROSS

POLL TEST: HP



SEI090377 SEIFERT TEDSTAR
SEI130061 SEIFERT BELMONT REDS 130061
SEI080322 SEIFERT 08 0322

SIRE: RJS210125 WAHROONGA 210125

COR19 CORYMBIA GENERIC BR BULL
COR110017 CORYMBIA 110017
COR18 CORYMBIA GENERIC COW

ANIMAL: RJS240249 WAHROONGA 0249

LSC050004 MIANDETTA 05-4 (AI) (ET)
TRE100039 TREMERE 100039
TRE040202 TREMERE 040202

DAM: RJS170012 WAHROONGA 0012

TRE090103 TREMERE 090103
RJS140030 WAHROONGA 140030
RJSCHAR19 WAHROONGA CHARBRAY COW 19

NOTES: Another one of the very good RJS210125 calves in the draft, this one is probably the most stylish of them all. He has plenty of length and depth, he's soft with a strong polled head. A bit of a curve bender in growth with a big EMA. His dam RJS170012 had five calves on a 366-day interval before she fell out of the system. She did save her best for the last one. 249 had a 39cm scrotal and gave an 84% normal morphology result.

June 2024 Belmont Red GROUP BREEDPLAN

	GL	BW	200	400	600	MC	Milk	SS	DC	CW	EMA	Rib	Rump	RBY	IMF	FL	\$ Index Value	
																	SRI	TI
EBV	0	3.7	23	25	49	46	10	3.6	-0.8	36	5.5	-0.4	0.4	0.7	0	0.17	+50	+43
Acc	27%	55%	71%	71%	74%	68%	47%	71%	39%	58%	52%	54%	52%	42%	47%	47		
Rank			20	35	15	35		4		15	1			25		20	35	20

Breed Avg. EBVs for 2023 Born Calves

EBV	-1.1	+2.3	+18	+21	+32	+37	+10	+1.7	-2.5	+23	+2.6	-0.3	+0.7	+0.5	+0.2	+0.04	+44	+32
-----	------	------	-----	-----	-----	-----	-----	------	------	-----	------	------	------	------	------	-------	-----	-----

Traits Observed: 200WT,400WT,600WT,SS,FAT,EMA,IMF

Purchaser:

\$

**LOT
14**

WAHROONGA 240219

ID: RJS240219

TATTOO: 219

HORN: POLL

DOB: 01/12/2023

REGO STATUS: REGISTERED

GRADE: PURE BR

POLL TEST: HP



SEI090377 SEIFERT TEDSTAR
SEI130061 SEIFERT BELMONT REDS 130061
SEI080322 SEIFERT 08 0322

SIRE: RJS190065 WAHROONGA 190065

RJSMS01 TRE090103 TRE100039
RJS150088 WAHROONGA 150088
RJSCSIRO30 WAHROONGA CSIRO 30

ANIMAL: RJS240219 WAHROONGA 220219

COR100014 CORYMBIA 100014
COR150027
COR060016

DAM: RJS190200

RJSGENSIRE WAHROONGA MT EUGENE GENERIC SIRE
RJS170088
COR100016

NOTES: A long deep red polled bull that makes you look twice. His dam RJS190200 calved out of season, she was held over to bring her into line with the rest of the herd so has a calving interval of 421 days for her four calves and is PTIC. The sire RJS190065 has been a consistent breeder and put his stamp on 219, high growth and fertility ranks him in the top 25% for both indices. A morphology result of 84% normal.

June 2024 Belmont Red GROUP BREEDPLAN

	GL	BW	200	400	600	MC	Milk	SS	DC	CW	EMA	Rib	Rump	RBY	IMF	FL	\$ Index Value	
																	SRI	TI
EBV	-2.1	3.6	26	33	56	64	15	3.7	-0.3	35	2.8	-1.6	-0.7	0.8	0	0.09	+47	+47
Acc	27%	54%	71%	71%	74%	68%	51%	71%	43%	58%	54%	58%	56%	44%	51%	49		
Rank	15		10	10	5	15	6	3		15	40			15		35	40	15

Breed Avg. EBVs for 2023 Born Calves

EBV	-1.1	+2.3	+18	+21	+32	+37	+10	+1.7	-2.5	+23	+2.6	-0.3	+0.7	+0.5	+0.2	+0.04	+44	+32
-----	------	------	-----	-----	-----	-----	-----	------	------	-----	------	------	------	------	------	-------	-----	-----

Traits Observed: 200WT,400WT,600WT,SS,FAT,EMA,IMF

Purchaser:

\$

**LOT
15**

WAHROONGA 240187

ID: RJS240187

TATTOO: 187

HORN: POLL

DOB: 30/10/2023

PP

REGO STATUS: REGISTERED

GRADE: PURE BR

POLL TEST: PP



BEL870458 BELMONT 87-458
MTE930249 MT EUGENE 93-249
MTE900312 MT EUGENE 90-312

SIRE: MTE190700 MT EUGENE 190700 (AI)

MTEGENS62 MT EUGENE GENS62
MTE110062 MT EUGENE 110062
MTEGEND62 MT EUGENE GENDAM62

ANIMAL: RJS240187 WAHROONGA 0187

SEI090377 SEIFERT TEDSTAR
SEI130061 SEIFERT BELMONT REDS 130061
SEI080322 SEIFERT 08 0322

DAM: RJS190098 WAHROONGA 190098

SEI120211 SEIFERT 120211
RJS160002 WAHROONGA 160002
COR120001 CORYMBIA 120001

NOTES: A homozygous polled bull with good muscle and great carcase attributes. 187 had the highest EMA of his cohort at 106 sq cm and an IMF of 5.2% at 497 kg when measured in early May. His dam has had five calves on a 353-day interval and is PTIC, all her male calves have been sold as bulls. 187's sire MTE190700 had loads of muscle and good Days to Calving, two traits he passed on. 187 still needs a semen test at this point, he was one of four set aside to join our herd to use over heifers. We intend to retain semen for our in-herd use.

June 2024 Belmont Red GROUP BREEDPLAN

	GL	BW	200	400	600	MC	Milk	SS	DC	CW	EMA	Rib	Rump	RBY	IMF	FL	\$ Index Value	
																	SRI	TI
EBV	-1.2	2.5	17	19	19	24	6	1.5	-3.2	22	4.2	0.2	0.6	0.9	0.4	0.02	+38	+22
Acc	30%	56%	72%	72%	75%	68%	46%	73%	43%	59%	56%	58%	56%	45%	52%	53		
Rank									40		6	25		9	10			

Breed Avg. EBVs for 2023 Born Calves

EBV	-1.1	+2.3	+18	+21	+32	+37	+10	+1.7	-2.5	+23	+2.6	-0.3	+0.7	+0.5	+0.2	+0.04	+44	+32
-----	------	------	-----	-----	-----	-----	-----	------	------	-----	------	------	------	------	------	-------	-----	-----

Traits Observed: 200WT,400WT,600WT,SS,FAT,EMA,IMF

Purchaser:

\$

**LOT
16**

WAHROONGA 240269

ID: RJS240269

TATTOO: 269

HORN: POLL

DOB: 13/11/2023

PP

REGO STATUS: REGISTERED

GRADE: PURE BR

POLL TEST: PP



5ST080965 FIVE STAR 08-965
MTE110686 MT EUGENE 11-686
MTE000113 MT EUGENE 00-113 (AI)
SIRE: MTE190074 MT EUGENE 190074
MTE060740 MT EUGENE 06-740
BEL120378 BELMONT 120378
BEL030403 BELMONT 03-0403

ANIMAL: RJS240269 WAHROONGA 0269

NOTES: A long lighter coloured homozygous polled bull with plenty of style. His dam COR130032 has a long list of good calves born on a 371-day calving interval. The sire MTE190074 was purchased for his carcase style. Strong growth, scrotal and IMF. He has solid indices and is the top10% for the Terminal Index. He still needs to be semen tested as I had him set aside for use in our herd, we intend to retain semen for use in our herd.

COR17 CORYMBIA GENERIC BR BULL

DAM: COR130032 CORYMBIA 130032

COR16 CORYMBIA GENERIC BR DAM

June 2024 Belmont Red GROUP BREEDPLAN

	GL	BW	200	400	600	MC	Milk	SS	DC	CW	EMA	Rib	Rump	RBV	IMF	FL	\$ Index Value	
																	SRI	TI
EBV		3.8	28	28	53	63	7	3.9	-0.2	36	2	-1.2	-0.3	1	0.4	0.03	+55	+50
Acc	%	53%	70%	70%	74%	66%	44%	72%	33%	55%	52%	54%	52%	39%	47%	48		
Rank			6	25	8	15		2		15				5	10		25	8
Breed Avg. EBVs for 2023 Born Calves																		
EBV	-1.1	+2.3	+18	+21	+32	+37	+10	+1.7	-2.5	+23	+2.6	-0.3	+0.7	+0.5	+0.2	+0.04	+44	+32

Traits Observed: 200WT,400WT,600WT,SS,FAT,EMA,IMF

Purchaser:

\$

**LOT
17**

WAHROONGA 240259

ID: RJS240259

TATTOO: 259

HORN: POLL

DOB: 10/11/2023

PP

REGO STATUS: REGISTERED

GRADE: PURE BR

POLL TEST: PP



TRE120165 TREMERE 120165

TRE160051 TREMERE 160051

TRE080458 TREMERE 080458

SIRE: TRE210675 TREMERE 210675

TRE010567 TREMERE 010567

TRE090190 TREMERE 090190

TRE030356 TREMERE 0356

ANIMAL: RJS240259 WAHROONGA 0259

COR17 CORYMBIA GENERIC BR BULL

DAM: COR140010 CORYMBIA 140010

COR16 CORYMBIA GENERIC BR DAM

NOTES: A homozygous polled dark red bull with appeal. His dam was a consistent breeder in the herd having eight calves on a 366-day interval before being culled. First calves by a sire TRE210675 that was in the top 1% for Days to Calving and IMF on the Tropical Composite register, he also gave a great semen test at 400 days, when purchased in 2022. 259 is a quiet bull that has some strong EBV's that place him in the top 25% on the Self Replacing Index. His morphology result was 89% normal when tested in May.

June 2024 Belmont Red GROUP BREEDPLAN

	GL	BW	200	400	600	MC	Milk	SS	DC	CW	EMA	Rib	Rump	RBV	IMF	FL	\$ Index Value	
																	SRI	TI
EBV		2.8	19	22	41	47	9	2	-2.7	25	1.2	-0.4	1.3	0.2	0.4	0.02	+53	+40
Acc	%	49%	68%	68%	72%	63%	41%	69%	30%	53%	48%	50%	48%	36%	42%	27		
Rank			40		25	35		40					25		10		30	25
Breed Avg. EBVs for 2023 Born Calves																		
EBV	-1.1	+2.3	+18	+21	+32	+37	+10	+1.7	-2.5	+23	+2.6	-0.3	+0.7	+0.5	+0.2	+0.04	+44	+32

Traits Observed: 200WT,400WT,600WT,SS,FAT,EMA,IMF

Purchaser:

\$

**LOT
18**

WAHROONGA 240095

ID: RJS240095

TATTOO: 95

HORN: POLL

DOB: 17/10/2023

PP

REGO STATUS: REGISTERED

GRADE: PURE BR

POLL TEST: PP



SEI130061 SEIFERT BELMONT REDS 130061
SEI170105 SEIFERT BELMONT REDS 170105
SEI120184 SEIFERT 120184

SIRE: SEI190229 SEIFERT BELMONT 190229

MON030017 MONTPELLIER 03-17
MON090040 MONTPELLIER 09-40
MON060216 MONTPELLIER 06-30

ANIMAL: RJS240095 WAHROONGA 240095

TRE140173 TREMERE 140173
RJS190035 WAHROONGA 190035
BEL100167 BELMONT 100167

DAM: RJS210056 WAHROONGA 210056

COR150016 CORYMBIA 150016
RJS180118 WAHROONGA 180118
RJS160008 WAHROONGA 160008

NOTES: An appealing homozygous polled bull with plenty of length. The dam has given four calves on a good interval of 349 days and is PTIC. The sire SE190229 matured into a big bull and his EBV's continued to rise with his progeny recorded. 95 has a Self-Replacing Index in the top 25% of the breed. While his Scrotal size is down the bottom end of the breed his morphology result was near perfect and the highest off the group with 96% normal.

June 2024 Belmont Red GROUP BREEDPLAN

	GL	BW	200	400	600	MC	Milk	SS	DC	CW	EMA	Rib	Rump	RBY	IMF	FL	\$ Index Value	
																	SRI	TI
EBV	-0.9	3.8	26	27	43	40	13	1.4	-4.8	30	1.9	-0.2	0.9	0.7	0.4	-0.06	+64	+40
Acc	25%	55%	71%	71%	74%	67%	51%	72%	44%	59%	56%	58%	56%	45%	52%	55		
Rank			10	25	25		20		25	25		40	40	25	10		15	25

Breed Avg. EBVs for 2023 Born Calves

EBV	-1.1	+2.3	+18	+21	+32	+37	+10	+1.7	-2.5	+23	+2.6	-0.3	+0.7	+0.5	+0.2	+0.04	+44	+32
------------	------	------	-----	-----	-----	-----	-----	------	------	-----	------	------	------	------	------	-------	-----	-----

Traits Observed: 200WT,400WT,600WT,SS,FAT,EMA,IMF

Purchaser:

\$

**LOT
19**

WAHROONGA 240063

ID: RJS240063

TATTOO: 63

HORN: POLL

DOB: 06/11/2023

REGO STATUS: REGISTERED

GRADE: PURE BR

POLL TEST: HP



TRE120165 TREMERE 120165

TRE160051 TREMERE 160051

TRE080458 TREMERE 080458

SIRE: TRE210675 TREMERE 210675

TRE010567 TREMERE 010567

TRE090190 TREMERE 090190

TRE030356 TREMERE 0356

ANIMAL: RJS240063 WAHROONGA 240063

SEI090377 SEIFERT TEDSTAR

SEI130061 SEIFERT BELMONT REDS 130061

SEI080322 SEIFERT 08 0322

DAM: RJS210144 WAHROONGA 210144

COR19 CORYMBIA GENERIC BR BULL

COR130002 CORYMBIA 130002

COR18 CORYMBIA GENERIC COW

NOTES: A long homozygous polled bull sired by TRE210675. His dam has had three calves in a row and is PTIC, she goes back to SEI130061 which has been the most influential sires in our herd to date. 63 ranks in the top 25% of the breed on the Self-Replacing Index. Like all the 675 calves a high morphology is a given, 63 scored 90% normal.

June 2024 Belmont Red GROUP BREEDPLAN

	GL	BW	200	400	600	MC	Milk	SS	DC	CW	EMA	Rib	Rump	RBY	IMF	FL	\$ Index Value	
																	SRI	TI
EBV	-0.6	3.8	21	32	43	57	10	3.2	-4	33	2.7	-0.8	0.1	0.8	0.1	-0.01	+58	+38
Acc	27%	52%	69%	69%	72%	64%	38%	70%	36%	55%	51%	53%	51%	41%	46%	36		
Rank			30	15	25	20		7	30	20				15			20	30

Breed Avg. EBVs for 2023 Born Calves

EBV	-1.1	+2.3	+18	+21	+32	+37	+10	+1.7	-2.5	+23	+2.6	-0.3	+0.7	+0.5	+0.2	+0.04	+44	+32
------------	------	------	-----	-----	-----	-----	-----	------	------	-----	------	------	------	------	------	-------	-----	-----

Traits Observed: 200WT,400WT,600WT,SS,FAT,EMA,IMF

Purchaser:

\$

**LOT
20**

WAHROONGA 240065

ID: RJS240065

TATTOO: 65

HORN: POLL

DOB: 06/01/2024

PP

REGO STATUS: REGISTERED

GRADE: PURE BR

POLL TEST: PP



SEI090377 SEIFERT TEDSTAR
SEI130061 SEIFERT BELMONT REDS 130061
SEI080322 SEIFERT 08 0322

SIRE: RJS220045 WAHROONGA 220045

COR19 CORYMBIA GENERIC BR BULL
COR130002 CORYMBIA 130002
COR18 CORYMBIA GENERIC COW

ANIMAL: RJS240065 WAHROONGA 240065

RJS170073 WAHROONGA 0073
RJS200011 WAHROONGA 200011
COR180026 CORYMBIA 180026

DAM: RJS220100 WAHROONGA 220100

COR150016 CORYMBIA 150016
RJS200086 WAHROONGA 200086
RJS170020 WAHROONGA 0020

NOTES: The second youngest bull in our draft, he is a homozygous polled Son of RJS220045 with great growth and carcase figures, he sits in the top 25% of the breed for both indices. His dams first calf, she calved as a two-year-old and is now PTIC with her third. When tested in May this bull passed a morphology test with 72% normal.

June 2024 Belmont Red GROUP BREEDPLAN

	GL	BW	200	400	600	MC	Milk	SS	DC	CW	EMA	Rib	Rump	RBY	IMF	FL	\$ Index Value	
																	SRI	TI
EBV		4.6	30	31	53	58	13	4	-0.6	41	4.5	-0.6	0.4	1	0.1	0.14	+49	+45
Acc	%	50%	66%	67%	69%	62%	41%	67%	35%	53%	47%	49%	47%	38%	43%	42		
Rank			3	15	8	20	20	2		4	4			5		25	35	15
Breed Avg. EBVs for 2023 Born Calves																		
EBV	-1.1	+2.3	+18	+21	+32	+37	+10	+1.7	-2.5	+23	+2.6	-0.3	+0.7	+0.5	+0.2	+0.04	+44	+32

Traits Observed: 200WT,400WT,600WT,SS,FAT,EMA,IMF

Purchaser:

\$

**LOT
21**

WAHROONGA 240211

ID: RJS240211

TATTOO: 211

HORN: POLL

DOB: 01/12/2023

PP

REGO STATUS: REGISTERED

GRADE: PURE BR

POLL TEST: PP



SEI090377 SEIFERT TEDSTAR
SEI130061 SEIFERT BELMONT REDS 130061
SEI080322 SEIFERT 08 0322

SIRE: RJS190065 WAHROONGA 190065

RJSMS01 TRE090103 TRE100039
RJS150088 WAHROONGA 150088
RJSCSIRO30 WAHROONGA CSIRO 30

ANIMAL: RJS240211 WAHROONGA 0211

SEI150103 SEIFERT BELMONT 150103
SEI170321 SEIFERT BELMONT 170321
SEI140422 SEIFERT 140422

DAM: RJS190208 WAHROONGA 190208

RJSGENSIRE WAHROONGA MT EUGENE GENERIC SIRE
RJS170072 WAHROONGA 0072
COR120003 CORYMBIA 120003

NOTES: A nice moderate sized homozygous polled bull that would suit heifers, he has excellent fertility figures. We think he will produce a great line of females. His dam has had four calves since having her first calf out of season, she calved late in the season but is PTIC with her fifth. Her inter-calving interval is 440 days considering she was held back to fall into line with the herd. 211 had a 37cm scrotal and a morphology result of 85% normal when tested in late May.

June 2024 Belmont Red GROUP BREEDPLAN

	GL	BW	200	400	600	MC	Milk	SS	DC	CW	EMA	Rib	Rump	RBY	IMF	FL	\$ Index Value	
																	SRI	TI
EBV	-1.7	2.7	18	21	26	29	14	4.1	-2.3	19	1	-1.7	-0.8	0.6	0.1	0.22	+23	+19
Acc	27%	55%	71%	71%	75%	68%	50%	72%	43%	58%	55%	58%	57%	45%	52%	50		
Rank	25						15	1						40		9		

Breed Avg. EBVs for 2023 Born Calves

EBV	-1.1	+2.3	+18	+21	+32	+37	+10	+1.7	-2.5	+23	+2.6	-0.3	+0.7	+0.5	+0.2	+0.04	+44	+32
-----	------	------	-----	-----	-----	-----	-----	------	------	-----	------	------	------	------	------	-------	-----	-----

Traits Observed: 200WT,400WT,600WT,SS,FAT,EMA,IMF

Purchaser:

\$

**LOT
22**

WAHROONGA 240223

ID: RJS240223

TATTOO: 223

HORN: POLL

DOB: 01/12/2023

REGO STATUS: REGISTERED

GRADE: PURE BR

POLL TEST: HP



SEI090377 SEIFERT TEDSTAR

SEI130061 SEIFERT BELMONT REDS 130061

SEI080322 SEIFERT 08 0322

SIRE: RJS190065 WAHROONGA 190065

RJSMS01 TRE090103 TRE100039

RJS150088 WAHROONGA 150088

RJSCSIRO30 WAHROONGA CSIRO 30

ANIMAL: RJS240223 WAHROONGA 0223

SEI120051 SEIFERT 120051

SEI140171 SEIFERT 140171

SEI080214 SEIFERT 08 0214

DAM: RJS190012 WAHROONGA 190012

COR19 CORYMBIA GENERIC BR BULL

COR110038 CORYMBIA 110038

COR18 CORYMBIA GENERIC COW

NOTES: A nice soft docile type with good length and a strong polled head, he has good fertility and carcase EBV's, he is placed in the top 20% of the breed for the Self-Replacing Index. 223 would be suited for use on yearling heifers. His dam has had three calves before going missing, she turned up with a small calf well out of season. The sire RJS190065 left his stamp on the calf. 223 gave a qualified pass when tested in late May, he will be retested.

June 2024 Belmont Red GROUP BREEDPLAN

	GL	BW	200	400	600	MC	Milk	SS	DC	CW	EMA	Rib	Rump	RBY	IMF	FL	\$ Index Value	
																	SRI	TI
EBV	-1.3	2.6	18	22	38	49	14	3.5	-2.6	31	5.4	-0.4	0.4	1	0.1	0.08	+51	+39
Acc	28%	56%	72%	72%	75%	69%	52%	72%	45%	59%	56%	59%	58%	46%	53%	53		
Rank	40				35	30	15	4		25	1			5		35	30	30

Breed Avg. EBVs for 2023 Born Calves

EBV	-1.1	+2.3	+18	+21	+32	+37	+10	+1.7	-2.5	+23	+2.6	-0.3	+0.7	+0.5	+0.2	+0.04	+44	+32
------------	------	------	-----	-----	-----	-----	-----	------	------	-----	------	------	------	------	------	-------	-----	-----

Traits Observed: 200WT,400WT,600WT,SS,FAT,EMA,IMF

Purchaser:

\$

**LOT
23**

WAHROONGA 240103

ID: RJS240103

TATTOO: 103

HORN: SCURR

DOB: 25/10/2023

REGO STATUS: REGISTERED

GRADE: 3RD CROSS

POLL TEST: HP



TRE140173 TREMERE 140173
RJS190035 WAHROONGA 190035
BEL100167 BELMONT 100167
SIRE: RJS210171 WAHROONGA 210171
SE1130061 SEIFERT BELMONT REDS 130061
RJS180064 WAHROONGA 180064
COR130009 CORYMBIA 130009

ANIMAL: RJS240103 WAHROONGA 240103

RJSGENSIRE WAHROONGA MT EUGENE GENERIC SIRE

DAM: RJS170100 WAHROONGA 0100
COR19 CORYMBIA GENERIC BR BULL
COR060009 CORYMBIA 060009
COR18 CORYMBIA GENERIC COW

NOTES: A scurred bull with plenty of scale and presence. Sired by RJS210171, he passed on fat cover to his progeny, all three of his sons in this draft average 1-2mm more than the group. 103's dam goes back to where we started, out of a Corymbia cow and from a Mt Eugene bull used in 2016, she has had seven calves on a 361 interval and is PTIC. 103 has solid growth with good fat cover, add fertility and he ranks in the top 25% for both Indices. He passed a morphology test with 77% normal.

June 2024 Belmont Red GROUP BREEDPLAN

	GL	BW	200	400	600	MC	Milk	SS	DC	CW	EMA	Rib	Rump	RBY	IMF	FL	\$ Index Value	
																	SRI	TI
EBV		3.2	20	31	42	51	10	1.2	-3.9	27	1.9	-0.1	1.6	0.3	0.1	-0.07	+59	+40
Acc	%	53%	70%	71%	73%	67%	46%	71%	38%	57%	50%	52%	50%	40%	45%	44		
Rank			35	15	25	25			30	35		35	20				20	25

Breed Avg. EBVs for 2023 Born Calves

EBV	-1.1	+2.3	+18	+21	+32	+37	+10	+1.7	-2.5	+23	+2.6	-0.3	+0.7	+0.5	+0.2	+0.04	+44	+32
-----	------	------	-----	-----	-----	-----	-----	------	------	-----	------	------	------	------	------	-------	-----	-----

Traits Observed: 200WT,400WT,600WT,SS,FAT,EMA,IMF

Purchaser:

\$

**LOT
24**

WAHROONGA 240151

ID: RJS240151

TATTOO: 151

HORN: SCURR

DOB: 04/11/2023

REGO STATUS: REGISTERED

GRADE: PURE BR

POLL TEST: HP



SEI120051 SEIFERT 120051

SEI140171 SEIFERT 140171

SEI080214 SEIFERT 08 0214

SIRE: RJS200107 WAHROONGA 200107

RJSMS01 TRE090103 TRE100039

RJS150088 WAHROONGA 150088

RJSCSIRO30 WAHROONGA CSIRO 30

ANIMAL: RJS240151 WAHROONGA 0151

LSC050004 MIANDETTA 05-4 (AI) (ET)

TRE140173 TREMERE 140173

TRE100084 TREMERE 100084

DAM: RJS200066 WAHROONGA 200066

COR19 CORYMBIA GENERIC BR BULL

COR090015 CORYMBIA 090015

COR18 CORYMBIA GENERIC COW

NOTES: A son of RJS200107, this scurred bull has plenty of length and carcass. A good allrounder is a good way to describe him, he sits on the breed average for the Self-Replacing Index. 151's dam has had four calves in a row on a 353-day interval, she is PTIC. In late May 151 had a morphology of 81% normal. Suitable for heifers.

June 2024 Belmont Red GROUP BREEDPLAN

	GL	BW	200	400	600	MC	Milk	SS	DC	CW	EMA	Rib	Rump	RBY	IMF	FL	\$ Index Value	
																	SRI	TI
EBV		2.4	17	19	35	41	16	2.9	-3.5	26	3.5	-0.3	0.7	0.8	0.3	-0.09	+54	+41
Acc	%	54%	70%	71%	74%	68%	46%	71%	41%	58%	54%	56%	54%	43%	49%	49		
Rank							3	15	35	40	20			15	25		25	25

Breed Avg. EBVs for 2023 Born Calves

EBV	-1.1	+2.3	+18	+21	+32	+37	+10	+1.7	-2.5	+23	+2.6	-0.3	+0.7	+0.5	+0.2	+0.04	+44	+32
-----	------	------	-----	-----	-----	-----	-----	------	------	-----	------	------	------	------	------	-------	-----	-----

Traits Observed: 200WT,400WT,600WT,SS,FAT,EMA,IMF

Purchaser:

\$

**LOT
25**

WAHROONGA 240043

ID: RJS240043

TATTOO: 43

HORN: SCURR

DOB: 30/09/2023

REGO STATUS: REGISTERED

GRADE: 3RD CROSS

POLL TEST: HP



RJSGENSIRE WAHROONGA MT EUGENE GENERIC SIRE

SIRE: RJS170073 WAHROONGA 0073

COR19 CORYMBIA GENERIC BR BULL

COR060021 CORYMBIA 060021

COR18 CORYMBIA GENERIC COW

ANIMAL: RJS240043 WAHROONGA 240043

SEI150143 SEIFERT BELMONT 150143

SEI190559 SEIFERT BELMONT 190559

SEI160424 SEIFERT BELMONT 160424

DAM: RJS210232 WAHROONGA 210232

COR150027 CORYMBIA 150027

RJS190192 WAHROONGA 190192

RJS170082 WAHROONGA 0082

NOTES: Sired by an older bull RJS170073, 43 has grown into an impressive long and deep bull. His dam is a young breeder that has had two on a longer Interval of 390 days and is PTIC. He had a morphology of 78% normal when tested in late May.

June 2024 Belmont Red GROUP BREEDPLAN

	GL	BW	200	400	600	MC	Milk	SS	DC	CW	EMA	Rib	Rump	RBV	IMF	FL	\$ Index Value	
																	SRI	TI
EBV		2.3	20	17	30	25	13	3.3	-0.7	27	3.3	-0.9	0.2	0.8	0.3	0.11	+33	+34
Acc	%	47%	61%	62%	59%	57%	47%	62%	33%	49%	37%	39%	38%	32%	35%	35		
Rank			35				20	6		35	25			15	25	30		

Breed Avg. EBVs for 2023 Born Calves

EBV	-1.1	+2.3	+18	+21	+32	+37	+10	+1.7	-2.5	+23	+2.6	-0.3	+0.7	+0.5	+0.2	+0.04	+44	+32
-----	------	------	-----	-----	-----	-----	-----	------	------	-----	------	------	------	------	------	-------	-----	-----

Traits Observed: 200WT,400WT,600WT,SS,FAT,EMA,IMF

Purchaser:

\$

**LOT
26**

WAHROONGA 240125

ID: RJS240125

TATTOO: 125

HORN: SCURR

DOB: 31/10/2023

REGO STATUS: REGISTERED

GRADE: PURE BR

POLL TEST: HP



TRE140173 TREMERE 140173
RJS190035 WAHROONGA 190035
BEL100167 BELMONT 100167
SIRE: RJS210171 WAHROONGA 210171
SEI130061 SEIFERT BELMONT REDS 130061
RJS180064 WAHROONGA 180064
COR130009 CORYMBIA 130009

ANIMAL: RJS240125 WAHROONGA 0125
SEI120051 SEIFERT 120051
SEI140171 SEIFERT 140171
SEI080214 SEIFERT 08 0214
DAM: RJS180042 WAHROONGA 180042
TRE070425 TREMERE 07-425
BEL110143 BELMONT 110143
BEL010194 BELMONT 01-0194 (COM)

NOTES: This bull is long, deep and has some great carcase attributes. Another calf by RJS210171, his raw scan data was 102 sqcm EMA with 7mm and 9mm cover and had a 5.4% IMF score at 514 kg. His Carcase EBV's rank him in the top 10% and his indices are top 25%. 125's dam has calved six times in a row and is PTIC on a 358-day interval. He scored a qualified pass at 67% normal.

June 2024 Belmont Red GROUP BREEDPLAN

	GL	BW	200	400	600	MC	Milk	SS	DC	CW	EMA	Rib	Rump	RBY	IMF	FL	\$ Index Value	
																	SRI	TI
EBV		2.7	16	28	35	46	10	1.8	-3	26	4.1	0.9	2.1	0.6	0.4	-0.03	+55	+40
Acc	%	55%	71%	71%	74%	68%	46%	71%	40%	58%	52%	54%	52%	42%	47%	48		
Rank				25		35			40	40	7	5	10	40	10		25	25
Breed Avg. EBVs for 2023 Born Calves																		
EBV	-1.1	+2.3	+18	+21	+32	+37	+10	+1.7	-2.5	+23	+2.6	-0.3	+0.7	+0.5	+0.2	+0.04	+44	+32

Traits Observed: 200WT,400WT,600WT,SS,FAT,EMA,IMF

Purchaser:

\$

**LOT
27**

WAHROONGA 240257

ID: RJS240257

TATTOO: 257

HORN: SCURR

DOB: 31/10/2023

REGO STATUS: REGISTERED

GRADE: PURE BR

POLL TEST: HP



5ST080965 FIVE STAR 08-965
MTE110686 MT EUGENE 11-686
MTE000113 MT EUGENE 00-113 (AI)

SIRE: MTE190074 MT EUGENE 190074

MTE060740 MT EUGENE 06-740
BEL120378 BELMONT 120378
BEL030403 BELMONT 03-0403

ANIMAL: RJS240257 WAHROONGA 0257

NOTES: I have loved the shape of this scurred bull since he was a calf, his thickness, his length and he moves freely. He weighed 305kg at weaning last year. His sire MTE190074 has added some punch to all his progeny, 257 had an EMA of 100sqcm at 450 Kg. The dam is an ever-reliable Corymbia Cow that has had eight calves for us every 364 days. 257 had a morphology of 73% normal.

COR17 CORYMBIA GENERIC BR BULL

DAM: COR140025 CORYMBIA 140025

COR16 CORYMBIA GENERIC BR DAM

June 2024 Belmont Red GROUP BREEDPLAN

	GL	BW	200	400	600	MC	Milk	SS	DC	CW	EMA	Rib	Rump	RBY	IMF	FL	\$ Index Value	
																	SRI	TI
EBV		2.1	18	14	18	18	12	2.3	1.6	21	3.1	-0.7	-0.4	1.1	0.1	0.03	+7	+20
Acc	%	51%	70%	70%	73%	65%	43%	71%	32%	54%	51%	53%	50%	38%	45%	47		
Rank							30	25			30			3				

Breed Avg. EBVs for 2023 Born Calves

EBV	-1.1	+2.3	+18	+21	+32	+37	+10	+1.7	-2.5	+23	+2.6	-0.3	+0.7	+0.5	+0.2	+0.04	+44	+32
------------	------	------	-----	-----	-----	-----	-----	------	------	-----	------	------	------	------	------	-------	-----	-----

Traits Observed: 200WT,400WT,600WT,SS,FAT,EMA,IMF

Purchaser:

\$

**LOT
28**

WAHROONGA 240085

ID: RJS240085

TATTOO: 85

HORN: POLL

DOB: 23/10/2023

PP

REGO STATUS: REGISTERED

GRADE: PURE BR

POLL TEST: PP



5ST080965 FIVE STAR 08-965
MTE110686 MT EUGENE 11-686
MTE000113 MT EUGENE 00-113 (AI)

SIRE: MTE190074 MT EUGENE 190074

MTE060740 MT EUGENE 06-740
BEL120378 BELMONT 120378
BEL030403 BELMONT 03-0403

ANIMAL: RJS240085 WAHROONGA 240085

SEI140171 SEIFERT 140171
RJS190017 WAHROONGA 190017
COR090015 CORYMBIA 090015

DAM: RJS210154 WAHROONGA 210154

COR17 CORYMBIA GENERIC BR BULL
COR140003 CORYMBIA 140003
COR16 CORYMBIA GENERIC BR DAM

NOTES: A bull that I kept catching my eye as a weaner, he is a well put together package. A broad homozygous polled head and thick body, it's no surprise he ranks in the top 10% for Retail Beef Yield. He is another MTE190074 son, from a good young cow now set in our herd having weaned three calves on a 350-day Interval, she is PTIC. 85's morphology result was 90%.

June 2024 Belmont Red GROUP BREEDPLAN

	GL	BW	200	400	600	MC	Milk	SS	DC	CW	EMA	Rib	Rump	RBV	IMF	FL	\$ Index Value	
																	SRI	TI
EBV		1.2	11	13	10	15	9	2.3	-2.8	16	3.3	-0.8	-0.7	1.1	0.1	-0.04	+26	+15
Acc	%	53%	70%	70%	73%	65%	38%	71%	34%	56%	52%	53%	51%	40%	46%	51		
Rank		25						25			25			3				

Breed Avg. EBVs for 2023 Born Calves

EBV	-1.1	+2.3	+18	+21	+32	+37	+10	+1.7	-2.5	+23	+2.6	-0.3	+0.7	+0.5	+0.2	+0.04	+44	+32
------------	------	------	-----	-----	-----	-----	-----	------	------	-----	------	------	------	------	------	-------	-----	-----

Traits Observed: 200WT,400WT,600WT,SS,FAT,EMA,IMF

Purchaser:

\$

**LOT
29**

WAHROONGA 240205

ID: RJS240205

TATTOO: 205

HORN: POLL

DOB: 14/01/2024

PP

REGO STATUS: REGISTERED

GRADE: PURE BR

POLL TEST: PP



SEI090377 SEIFERT TEDSTAR
SEI130061 SEIFERT BELMONT REDS 130061
SEI080322 SEIFERT 08 0322

SIRE: RJS220045 WAHROONGA 220045

COR19 CORYMBIA GENERIC BR BULL
COR130002 CORYMBIA 130002
COR18 CORYMBIA GENERIC COW

ANIMAL: RJS240205 WAHROONGA 0205

SEI090377 SEIFERT TEDSTAR
SEI130061 SEIFERT BELMONT REDS 130061
SEI080322 SEIFERT 08 0322

DAM: RJS220248 WAHROONGA 220248

COR19 CORYMBIA GENERIC BR BULL
COR090015 CORYMBIA 090015
COR18 CORYMBIA GENERIC COW

NOTES: A compact fleshy homozygous polled bull with the best Days to Calving EBV -7.6 in our draft. A heifers first calf, she has had another and is PTIC. Sired by RJS220045, 205 is a chip off the block for carcase shape, he had an EMA of 100 sq cm weighing 450 kg. He is suitable for young heifers and has a morphology of 79% normal rounds out this impressive young bull.

June 2024 Belmont Red GROUP BREEDPLAN

	GL	BW	200	400	600	MC	Milk	SS	DC	CW	EMA	Rib	Rump	RBY	IMF	FL	\$ Index Value	
																	SRI	TI
EBV	-1.1	1	12	10	19	13	13	2.8	-7.6	17	2.6	-0.3	1.2	0.3	0.4	0.17	+58	+26
Acc	32%	45%	55%	55%	53%	52%	46%	51%	37%	47%	40%	41%	40%	37%	39%	47		
Rank		20					20	15	5				30		10	20	20	

Breed Avg. EBVs for 2023 Born Calves

EBV	-1.1	+2.3	+18	+21	+32	+37	+10	+1.7	-2.5	+23	+2.6	-0.3	+0.7	+0.5	+0.2	+0.04	+44	+32
------------	------	------	-----	-----	-----	-----	-----	------	------	-----	------	------	------	------	------	-------	-----	-----

Traits Observed: 200WT,400WT,600WT,SS,FAT,EMA,IMF

Purchaser:

\$

**LOT
30**

WAHROONGA 240047

ID: RJS240047

TATTOO: 47

HORN: POLL

DOB: 29/11/2023

PP

REGO STATUS: REGISTERED

GRADE: PURE BR

POLL TEST: PP



SEI090377 SEIFERT TEDSTAR
SEI130061 SEIFERT BELMONT REDS 130061
SEI080322 SEIFERT 08 0322

SIRE: RJS190065 WAHROONGA 190065

RJSMS01 TRE090103 TRE100039
RJS150088 WAHROONGA 150088
RJSCSIRO30 WAHROONGA CSIRO 30

ANIMAL: RJS240047 WAHROONGA 240047

SEI150103 SEIFERT BELMONT 150103
SEI170321 SEIFERT BELMONT 170321
SEI140422 SEIFERT 140422

DAM: RJS190210 WAHROONGA 190210

TRE140173 TREMERE 140173
RJS170124 WAHROONGA 0124
RJS150086 WAHROONGA 150086

NOTES: A strong and quiet homozygous polled bull, with good length and dark points from his mother RJS190210. Since calving out of season at two and a half years of age she has had four calves on a 420-day interval and is PTIC. His sire RJS190065 has given 47 good growth and fertility, he has above average index values. A 79% normal morphology result

June 2024 Belmont Red GROUP BREEDPLAN

	GL	BW	200	400	600	MC	Milk	SS	DC	CW	EMA	Rib	Rump	RBY	IMF	FL	\$ Index Value	
																	SRI	TI
EBV	-0.9	4.2	22	32	53	71	15	3.6	-0.6	34	2.7	-0.8	0.5	0.5	0.1	0.18	+46	+46
Acc	26%	55%	71%	71%	75%	68%	51%	72%	44%	59%	56%	59%	57%	46%	52%	51		
Rank			25	15	8	8	6	4		15						15		15

Breed Avg. EBVs for 2023 Born Calves

EBV	-1.1	+2.3	+18	+21	+32	+37	+10	+1.7	-2.5	+23	+2.6	-0.3	+0.7	+0.5	+0.2	+0.04	+44	+32
------------	------	------	-----	-----	-----	-----	-----	------	------	-----	------	------	------	------	------	-------	-----	-----

Traits Observed: 200WT,400WT,600WT,SS,FAT,EMA,IMF

Purchaser:

\$

**LOT
31**

WAHROONGA 240157

ID: RJS240157

TATTOO: 157

HORN: POLL

DOB: 13/11/2023

PP

REGO STATUS: REGISTERED

GRADE: PURE BR

POLL TEST: PP



TRE120165 TREMERE 120165

TRE160051 TREMERE 160051

TRE080458 TREMERE 080458

SIRE: TRE210675 TREMERE 210675

TRE010567 TREMERE 010567

TRE090190 TREMERE 090190

TRE030356 TREMERE 0356

ANIMAL: RJS240157 WAHROONGA 240157

NOTES: A long bull with a nice homozygous polled head, he is sired by TRE210675 and a great choice for yearling heifers with his low birthweight EBV. His dam is a reliable Corymbia cow with negative Days to Calving, she has had nine calves with an Inter-calving Interval of 367 days. 157 had a high morphology result with 91% normal.

COR17 CORYMBIA GENERIC BR BULL

DAM: COR140003 CORYMBIA 140003

COR16 CORYMBIA GENERIC BR DAM

June 2024 Belmont Red GROUP BREEDPLAN

	GL	BW	200	400	600	MC	Milk	SS	DC	CW	EMA	Rib	Rump	RBY	IMF	FL	\$ Index Value	
																	SRI	TI
EBV		1.8	12	12	14	18	7	1.7	-3.3	18	2.7	-0.7	-0.1	0.7	0	0.02	+29	+13
Acc	%	49%	68%	68%	72%	64%	41%	69%	29%	53%	49%	51%	48%	36%	43%	28		
Rank		35							40					25				
Breed Avg. EBVs for 2023 Born Calves																		
EBV	-1.1	+2.3	+18	+21	+32	+37	+10	+1.7	-2.5	+23	+2.6	-0.3	+0.7	+0.5	+0.2	+0.04	+44	+32

Traits Observed: 200WT,400WT,600WT,SS,FAT,EMA,IMF

Purchaser:

\$

**LOT
32**

WAHROONGA 240135

ID: RJS240135

TATTOO: 135

HORN: POLL

DOB: 21/11/2023

PP

REGO STATUS: REGISTERED

GRADE: PURE BR

POLL TEST: PP



TRE140173 TREMERE 140173
RJS190035 WAHROONGA 190035
BEL100167 BELMONT 100167
SIRE: RJS210171 WAHROONGA 210171
SEI130061 SEIFERT BELMONT REDS 130061
RJS180064 WAHROONGA 180064
COR130009 CORYMBIA 130009

ANIMAL: RJS240135 WAHROONGA 0135

SEI120051 SEIFERT 120051
SEI140171 SEIFERT 140171
SEI080214 SEIFERT 08 0214

DAM: RJS170034 WAHROONGA 0034

MTE060086 MT EUGENE 06-86
BEL110081 BELMONT 110081
BEL020310 BELMONT 02-0310 (COM)

NOTES: A long and lighter coloured homozygous polled son of RJS210171, only when you look at his EBV's closely you see nearly all his traits land on the right side of the graph, he sits inside the top 25% for both Indexes. His dam goes back to the CSIRO herd cows we purchased in 2013 has had seven calves on a 364-day interval and is PTIC. 135 was a qualified pass in late May but will be retested before sale day.

June 2024 Belmont Red GROUP BREEDPLAN

	GL	BW	200	400	600	MC	Milk	SS	DC	CW	EMA	Rib	Rump	RBY	IMF	FL	\$ Index Value	
																	SRI	TI
EBV	-0.4	2.9	17	26	39	50	10	1.7	-3.3	24	2.3	0.4	1.7	0.4	0.4	-0.06	+57	+41
Acc	26%	55%	71%	71%	74%	67%	46%	71%	41%	58%	53%	55%	53%	43%	48%	48		
Rank				30	30	30			40			15	20		10		25	25

Breed Avg. EBVs for 2023 Born Calves

EBV	-1.1	+2.3	+18	+21	+32	+37	+10	+1.7	-2.5	+23	+2.6	-0.3	+0.7	+0.5	+0.2	+0.04	+44	+32
------------	------	------	-----	-----	-----	-----	-----	------	------	-----	------	------	------	------	------	-------	-----	-----

Traits Observed: 200WT,400WT,600WT,SS,FAT,EMA,IMF

Purchaser:

\$

**LOT
33**

WAHROONGA 240185

ID: RJS240185

TATTOO: 185

HORN: SCURR

DOB: 20/11/2023

REGO STATUS: REGISTERED

GRADE: PURE BR

POLL TEST: HP



SEI120051 SEIFERT 120051

SEI140171 SEIFERT 140171

SEI080214 SEIFERT 08 0214

SIRE: RJS200107 WAHROONGA 200107

RJSMS01 TRE090103 TRE100039

RJS150088 WAHROONGA 150088

RJSCSIRO30 WAHROONGA CSIRO 30

ANIMAL: RJS240185 WAHROONGA 0185

SEI120051 SEIFERT 120051

SEI140171 SEIFERT 140171

SEI080214 SEIFERT 08 0214

DAM: RJS200146 WAHROONGA 200146

TRE090103 TREMERE 090103

RJS160034 WAHROONGA 160034

BEL110019 BELMONT 110019

NOTES: A lighter coloured son of RJS200107, this bull is scurred and has good growth, he is consistent across all traits. His dam has had four calves on a 355-day Inter-Calving Interval. 185 had a morphology of 84% normal.

June 2024 Belmont Red GROUP BREEDPLAN

	GL	BW	200	400	600	MC	Milk	SS	DC	CW	EMA	Rib	Rump	RBY	IMF	FL	\$ Index Value	
																	SRI	TI
EBV		3.1	18	23	42	47	14	2.5	-3.3	21	2.3	-0.2	1	0.5	0.2	-0.12	+56	+41
Acc	%	57%	72%	73%	76%	70%	47%	73%	44%	60%	56%	58%	56%	46%	51%	52		
Rank				40	25	35	15	20	40			40	35		40		25	25

Breed Avg. EBVs for 2023 Born Calves

EBV	-1.1	+2.3	+18	+21	+32	+37	+10	+1.7	-2.5	+23	+2.6	-0.3	+0.7	+0.5	+0.2	+0.04	+44	+32
------------	------	------	-----	-----	-----	-----	-----	------	------	-----	------	------	------	------	------	-------	-----	-----

Traits Observed: 200WT,400WT,600WT,SS,FAT,EMA,IMF

Purchaser:

\$

**LOT
34**

WAHROONGA 240189

ID: RJS240189

TATTOO: 189

HORN: POLL

DOB: 24/10/2023

PP

REGO STATUS: REGISTERED

GRADE: PURE BR

POLL TEST: PP



SEI120051 SEIFERT 120051

SEI140171 SEIFERT 140171

SEI080214 SEIFERT 08 0214

SIRE: RJS200107 WAHROONGA 200107

RJSMS01 TRE090103 TRE100039

RJS150088 WAHROONGA 150088

RJSCSIRO30 WAHROONGA CSIRO 30

ANIMAL: RJS240189 WAHROONGA 0189

RJSGENSIRE WAHROONGA MT EUGENE GENERIC SIRE

RJS170065 WAHROONGA 0065

COR090015 CORYMBIA 090015

DAM: RJS200090 WAHROONGA 200090

COR100014 CORYMBIA 100014

COR180013 CORYMBIA 180013

COR130046 CORYMBIA 130046

NOTES: A homozygous polled bull with plenty of length that he gets from his sire RJS200107. His dam is a consistent cow that has calved four times in a row and is PTIC at a 364-day interval. He is a bull that is suited to join with heifers and his calves should grow to mating weight as yearlings. 189's morphology result was 80%.

June 2024 Belmont Red GROUP BREEDPLAN

	GL	BW	200	400	600	MC	Milk	SS	DC	CW	EMA	Rib	Rump	RBY	IMF	FL	\$ Index Value	
																	SRI	TI
EBV		2.5	18	20	29	34	15	2.9	-3.1	20	1.5	-0.8	0.5	0.6	0.2	-0.04	+36	+27
Acc	%	53%	70%	70%	73%	67%	44%	71%	38%	57%	53%	54%	52%	42%	48%	46		
Rank							6	15	40					40	40			

Breed Avg. EBVs for 2023 Born Calves

EBV	-1.1	+2.3	+18	+21	+32	+37	+10	+1.7	-2.5	+23	+2.6	-0.3	+0.7	+0.5	+0.2	+0.04	+44	+32
------------	------	------	-----	-----	-----	-----	-----	------	------	-----	------	------	------	------	------	-------	-----	-----

Traits Observed: 200WT,400WT,600WT,SS,FAT,EMA,IMF

Purchaser:

\$

**LOT
35**

WAHROONGA 240067

ID: RJS240067

TATTOO: 67

HORN: POLL

DOB: 30/11/2023

PP

REGO STATUS: REGISTERED

GRADE: PURE BR

POLL TEST: PP



SEI090377 SEIFERT TEDSTAR
SEI130061 SEIFERT BELMONT REDS 130061
SEI080322 SEIFERT 08 0322

SIRE: RJS220045 WAHROONGA 220045

COR19 CORYMBIA GENERIC BR BULL
COR130002 CORYMBIA 130002
COR18 CORYMBIA GENERIC COW

ANIMAL: RJS240067 WAHROONGA 240067

SEI170105 SEIFERT BELMONT REDS 170105
SEI190229 SEIFERT BELMONT 190229
MON090040 MONTPELLIER 09-40

DAM: RJS220212 WAHROONGA 220212

RJSMS01 TRE090103 TRE100039
RJS150034 WAHROONGA 150034
RJSCSIRO3 WAHROONGA CSIRO 3

NOTES: A homozygous polled bull from a young sire RJS220045 used as a yearling, his dam had him as a two-year-old and is PTIC with her third calf. Excellent fertility EBV's and solid growth combine to see this bull rank in the top 10% of the breed for the Self Replacing Index, top 25% on the Terminal Index. 67's morphology result of 63% was a qualified pass and will be retested.

June 2024 Belmont Red GROUP BREEDPLAN

	GL	BW	200	400	600	MC	Milk	SS	DC	CW	EMA	Rib	Rump	RBY	IMF	FL	\$ Index Value	
																	SRI	TI
EBV	-1.4	3.4	23	28	45	55	10	3.2	-6.1	31	1.7	-0.8	0.7	0.5	0.3	0.13	+74	+44
Acc	26%	51%	68%	68%	71%	64%	43%	69%	38%	55%	50%	52%	50%	41%	46%	45		
Rank	35		20	25	20	20		7	15	25				25	25	6	15	

Breed Avg. EBVs for 2023 Born Calves

EBV	-1.1	+2.3	+18	+21	+32	+37	+10	+1.7	-2.5	+23	+2.6	-0.3	+0.7	+0.5	+0.2	+0.04	+44	+32
------------	------	------	-----	-----	-----	-----	-----	------	------	-----	------	------	------	------	------	-------	-----	-----

Traits Observed: 200WT,400WT,600WT,SS,FAT,EMA,IMF

Purchaser:

\$

**LOT
36**

WAHROONGA 240235

ID: RJS240235

TATTOO: 235

HORN: POLL

DOB: 11/11/2023

PP

REGO STATUS: REGISTERED

GRADE: PURE BR

POLL TEST: PP



5ST080965 FIVE STAR 08-965
MTE110686 MT EUGENE 11-686
MTE000113 MT EUGENE 00-113 (AI)
SIRE: MTE190074 MT EUGENE 190074
MTE060740 MT EUGENE 06-740
BEL120378 BELMONT 120378
BEL030403 BELMONT 03-0403

ANIMAL: RJS240235 WAHROONGA 0235

COR19 CORYMBIA GENERIC BR BULL

DAM: COR130017 CORYMBIA 130017

COR18 CORYMBIA GENERIC COW

NOTES: Another calf by MTE190074 they all have the same high yielding shape about them. 235 is homozygous polled and has a low birthweight and suitable for young heifers. The dam is one of the original Corymbia heifers I purchased, she has had 10 calves and is PTIC. 235 had a morphology of 94%.

June 2024 Belmont Red GROUP BREEDPLAN

	GL	BW	200	400	600	MC	Milk	SS	DC	CW	EMA	Rib	Rump	RBY	IMF	FL	\$ Index Value	
																	SRI	TI
EBV		1.2	14	11	20	17	9	1.2	0.3	11	0.9	-0.8	0	0.5	0.1	-0.08	+17	+22
Acc	%	51%	70%	70%	73%	65%	43%	71%	33%	55%	51%	53%	50%	38%	45%	47		
Rank		25																
Breed Avg. EBVs for 2023 Born Calves																		
EBV	-1.1	+2.3	+18	+21	+32	+37	+10	+1.7	-2.5	+23	+2.6	-0.3	+0.7	+0.5	+0.2	+0.04	+44	+32

Traits Observed: 200WT,400WT,600WT,SS,FAT,EMA,IMF

Purchaser:

\$

**LOT
37**

WAHROONGA 240241

ID: RJS240241

TATTOO: 241

HORN: POLL

DOB: 14/11/2023

REGO STATUS: REGISTERED

GRADE: PURE BR

POLL TEST: HP



5ST080965 FIVE STAR 08-965
MTE110686 MT EUGENE 11-686
MTE000113 MT EUGENE 00-113 (AI)
SIRE: MTE190074 MT EUGENE 190074
MTE060740 MT EUGENE 06-740
BEL120378 BELMONT 120378
BEL030403 BELMONT 03-0403

ANIMAL: RJS240241 WAHROONGA 0241
5ST060104 FIVE STAR 060104
COR100014 CORYMBIA 100014
COR050032 CORYMBIA 05-32
DAM: COR170016 CORYMBIA 170016
COR17 CORYMBIA GENERIC BR BULL
COR090011 CORYMBIA 090011
COR16 CORYMBIA GENERIC BR DAM

NOTES: Another MTE190074 son, 241 is in the draft for his carcase attributes. He has suffered a bit of a setback but is moving forward again. He had an EMA of 100sqcm when scanned. His dam a Corymbia cow had six in a row but returned empty when he was weaned. 241 was a qualified pass when tested and will be rechecked before sale day.

June 2024 Belmont Red GROUP BREEDPLAN

	GL	BW	200	400	600	MC	Milk	SS	DC	CW	EMA	Rib	Rump	RBY	IMF	FL	\$ Index Value	
																	SRI	TI
EBV		2.9	23	15	31	17	11	2.1	4.5	27	4.1	-0.7	-0.7	1.2	0	-0.04	+6	+29
Acc	%	54%	71%	71%	74%	68%	42%	72%	37%	57%	52%	54%	52%	41%	47%	50		
Rank			20				35	35		35	7			1				

Breed Avg. EBVs for 2023 Born Calves

EBV	-1.1	+2.3	+18	+21	+32	+37	+10	+1.7	-2.5	+23	+2.6	-0.3	+0.7	+0.5	+0.2	+0.04	+44	+32
-----	------	------	-----	-----	-----	-----	-----	------	------	-----	------	------	------	------	------	-------	-----	-----

Traits Observed: 200WT,400WT,600WT,SS,FAT,EMA,IMF

Purchaser:

\$

**LOT
38**

WAHROONGA 240026

ID: RJS240026

TATTOO: 26

HORN: POLL

DOB: 02/12/2023

PP

REGO STATUS: REGISTERED

GRADE: PURE BR

POLL TEST: PP



MTE930249 MT EUGENE 93-249
MTE190700 MT EUGENE 190700 (AI)
MTE110062 MT EUGENE 110062

SIRE: RJS220079 WAHROONGA 220079

SEI140171 SEIFERT 140171
RJS190006 WAHROONGA 190006
COR130016 CORYMBIA 130016

ANIMAL: RJS240026 WAHROONGA 240026

SEI170105 SEIFERT BELMONT REDS 170105
SEI190229 SEIFERT BELMONT 190229
MON090040 MONTPELLIER 09-40

DAM: RJS220242 WAHROONGA 220242

TRE100039 TREMERE 100039
RJS170012 WAHROONGA 0012
RJS140030 WAHROONGA 140030

NOTES: This homozygous polled heifer was 3 months PTIC on the 11th of June and should calve out just before Christmas. 26 has an above average Self Replacing Index of \$46. Her dam is PTIC with her third calf in as many years. She was mated with a Multisire pairing of GRH230008 and RJS230053 in early January.

June 2024 Belmont Red GROUP BREEDPLAN

	GL	BW	200	400	600	MC	Milk	SS	DC	CW	EMA	Rib	Rump	RBY	IMF	FL	\$ Index Value	
																	SRI	TI
EBV		1.8	12	17	21	20	9	1.2	-4.5	17	3.7	-0.1	0.5	0.6	0.3	-0.05	+46	+25
Acc	%	49%	64%	66%	61%	58%	38%	50%	31%	50%	34%	35%	34%	32%	32%	43		
Rank		35							25		15	35		40	25		45	

Breed Avg. EBVs for 2023 Born Calves

EBV	-1.1	+2.3	+18	+21	+32	+37	+10	+1.7	-2.5	+23	+2.6	-0.3	+0.7	+0.5	+0.2	+0.04	+44	+32
------------	------	------	-----	-----	-----	-----	-----	------	------	-----	------	------	------	------	------	-------	-----	-----

Traits Observed: 200WT,400WT

Purchaser:

\$

**LOT
39**

WAHROONGA 240302

ID: RJS240302

TATTOO: 302

HORN: POLL

DOB: 16/11/2023

REGO STATUS: REGISTERED

GRADE: PURE BR

POLL TEST: HP



5ST080965 FIVE STAR 08-965
MTE110686 MT EUGENE 11-686
MTE000113 MT EUGENE 00-113 (AI)
SIRE: MTE190074 MT EUGENE 190074
MTE060740 MT EUGENE 06-740
BEL120378 BELMONT 120378
BEL030403 BELMONT 03-0403

ANIMAL: RJS240302 WAHROONGA 0302

COR17 CORYMBIA GENERIC BR BULL

DAM: COR130014 CORYMBIA 130014

COR16 CORYMBIA GENERIC BR DAM

NOTES: A clean heterozygous polled heifer, she was six weeks in calf on the 11th of June and will calve out in late January. Her dam is a Corymbia cow that had 9 calves for us on a 367-day Interval. She was mated with a Multisire pairing of GRH230008 and RJS230053 in early January.

June 2024 Belmont Red GROUP BREEDPLAN

	GL	BW	200	400	600	MC	Milk	SS	DC	CW	EMA	Rib	Rump	RBY	IMF	FL	\$ Index Value	
																	SRI	TI
EBV		2	16	19	24	31	10	1.9	2.7	23	3.1	-0.7	-0.2	0.9	0.1	0.03	+9	+26
Acc	%	50%	67%	68%	64%	60%	43%	54%	26%	51%	35%	37%	36%	31%	33%	47		
Rank		40						40			30			9				
Breed Avg. EBVs for 2023 Born Calves																		
EBV	-1.1	+2.3	+18	+21	+32	+37	+10	+1.7	-2.5	+23	+2.6	-0.3	+0.7	+0.5	+0.2	+0.04	+44	+32

Traits Observed: 200WT,400WT

Purchaser:

\$

**LOT
40**

WAHROONGA 240118

ID: RJS240118

TATTOO: 118

HORN: POLL

DOB: 24/10/2023

PP

REGO STATUS: REGISTERED

GRADE: PURE BR

POLL TEST: PP



SEI130061 SEIFERT BELMONT REDS 130061
SEI170105 SEIFERT BELMONT REDS 170105
SEI120184 SEIFERT 120184

SIRE: SEI190229 SEIFERT BELMONT 190229

MON030017 MONTPELLIER 03-17
MON090040 MONTPELLIER 09-40
MON060216 MONTPELLIER 06-30

ANIMAL: RJS240118 WAHROONGA 240118

SEI140171 SEIFERT 140171
RJS190017 WAHROONGA 190017
COR090015 CORYMBIA 090015

DAM: RJS210190 WAHROONGA 210190

RJSGENSIRE WAHROONGA MT EUGENE GENERIC SIRE
RJS170074 WAHROONGA 0074
COR110024 CORYMBIA 110024

NOTES: A homozygous polled heifer that ranks in the top 10% on the Self replacing Index and has a Days to Calving EBV of -8.8. She should calve out before Christmas. 118's mother has had three in a row and is PTIC. She was mated with a Multisire pairing of GRH230008 and RJS230053 in early January.

June 2024 Belmont Red GROUP BREEDPLAN

	GL	BW	200	400	600	MC	Milk	SS	DC	CW	EMA	Rib	Rump	RBY	IMF	FL	\$ Index Value	
																	SRI	TI
EBV		1.7	16	16	29	21	11	1.7	-8.8	18	1.6	-0.4	1.1	0.3	0.4	0.02	+75	+32
Acc	%	53%	68%	70%	65%	63%	51%	54%	40%	55%	42%	43%	43%	38%	41%	54		
Rank		35					35		2				30		10		5	

Breed Avg. EBVs for 2023 Born Calves

EBV	-1.1	+2.3	+18	+21	+32	+37	+10	+1.7	-2.5	+23	+2.6	-0.3	+0.7	+0.5	+0.2	+0.04	+44	+32
------------	------	------	-----	-----	-----	-----	-----	------	------	-----	------	------	------	------	------	-------	-----	-----

Traits Observed: 200WT,400WT

Purchaser:

\$

**LOT
41**

WAHROONGA 240140

ID: RJS240140

TATTOO: 140

HORN: POLL

DOB: 09/11/2023

REGO STATUS: REGISTERED

GRADE: PURE BR

POLL TEST: HP



SEI130061 SEIFERT BELMONT REDS 130061
SEI170105 SEIFERT BELMONT REDS 170105
SEI120184 SEIFERT 120184

SIRE: SEI190229 SEIFERT BELMONT 190229

MON030017 MONTPELLIER 03-17
MON090040 MONTPELLIER 09-40
MON060216 MONTPELLIER 06-30

ANIMAL: RJS240140 WAHROONGA 0140

SEI140171 SEIFERT 140171
RJS190017 WAHROONGA 190017
COR090015 CORYMBIA 090015

DAM: RJS210132 WAHROONGA 210132

COR17 CORYMBIA GENERIC BR BULL
COR140031 CORYMBIA 140031
COR16 CORYMBIA GENERIC BR DAM

NOTES: A polled, light coloured heifer with a Self-Replacing Index in the top 10% of the breed at \$74. She was 10 weeks PTIC in June and should calve in early January. Her dam had two and missed in her third season and was culled. She was mated with a Multisire pairing of GRH230008 and RJS230053 in early January.

June 2024 Belmont Red GROUP BREEDPLAN

	GL	BW	200	400	600	MC	Milk	SS	DC	CW	EMA	Rib	Rump	RBY	IMF	FL	\$ Index Value	
																	SRI	TI
EBV		1.4	13	18	26	30	10	1.4	-7.4	18	1.7	-0.5	0.7	0.4	0.4	0.07	+67	+32
Acc	%	52%	68%	69%	65%	62%	50%	54%	38%	54%	41%	43%	42%	38%	40%	53		
Rank		30							5						10	40	15	

Breed Avg. EBVs for 2023 Born Calves

EBV	-1.1	+2.3	+18	+21	+32	+37	+10	+1.7	-2.5	+23	+2.6	-0.3	+0.7	+0.5	+0.2	+0.04	+44	+32
-----	------	------	-----	-----	-----	-----	-----	------	------	-----	------	------	------	------	------	-------	-----	-----

Traits Observed: 200WT,400WT

Purchaser:

\$

**LOT
42**

WAHROONGA 24 0344

ID: RJS240344

TATTOO: 344

HORN: POLL

DOB: 01/11/2023

PP

REGO STATUS: REGISTERED

GRADE: PURE BR

POLL TEST: PP



5ST080965 FIVE STAR 08-965
MTE110686 MT EUGENE 11-686
MTE000113 MT EUGENE 00-113 (AI)

SIRE: MTE190074 MT EUGENE 190074

MTE060740 MT EUGENE 06-740
BEL120378 BELMONT 120378
BEL030403 BELMONT 03-0403

ANIMAL: RJS240344 WAHROONGA 0344

COR100014 CORYMBIA 100014
COR170012 CORYMBIA 170012
COR130032 CORYMBIA 130032

DAM: RJS190112 WAHROONGA 190112

COR100014 CORYMBIA 100014
COR170018 CORYMBIA 170018
COR140004 CORYMBIA 140004

NOTES: A homozygous polled heifer from MTE190074. Her dam is a Corymbia cow that has had five calves in a row and is PTIC. 344 was 8 weeks in calf when Preg tested by Dr Bruce Howlett in mid June and will calve in January next year. She was mated with a Multisire pairing of GRH230008 and RJS230053 in early January.

June 2024 Belmont Red GROUP BREEDPLAN

	GL	BW	200	400	600	MC	Milk	SS	DC	CW	EMA	Rib	Rump	RBY	IMF	FL	\$ Index Value	
																	SRI	TI
EBV		3.6	26	21	37	35	9	2.7	2	27	2.4	-0.8	-0.2	0.9	0.2	0.13	+21	+31
Acc	%	53%	68%	70%	65%	62%	41%	53%	33%	53%	36%	37%	36%	33%	34%	47		
Rank			10		35			15		35				9	40	25		

Breed Avg. EBVs for 2023 Born Calves

EBV	-1.1	+2.3	+18	+21	+32	+37	+10	+1.7	-2.5	+23	+2.6	-0.3	+0.7	+0.5	+0.2	+0.04	+44	+32
------------	------	------	-----	-----	-----	-----	-----	------	------	-----	------	------	------	------	------	-------	-----	-----

Traits Observed: 200WT,400WT

Purchaser:

\$

**LOT
43**

WAHROONGA 240364

ID: RJS240364

TATTOO: 364

HORN: POLL

DOB: 12/11/2023

PP

REGO STATUS: REGISTERED

GRADE: PURE BR

POLL TEST: PP



TRE120165 TREMERE 120165

TRE160051 TREMERE 160051

TRE080458 TREMERE 080458

SIRE: TRE210675 TREMERE 210675

TRE010567 TREMERE 010567

TRE090190 TREMERE 090190

TRE030356 TREMERE 0356

ANIMAL: RJS240364 WAHROONGA 0364

TRE140173 TREMERE 140173

RJS180129 WAHROONGA 180129

RJS150090 WAHROONGA 150090

DAM: RJS210012 WAHROONGA 210012

SEI130061 SEIFERT BELMONT REDS 130061

RJS190072 WAHROONGA 190072

RJS150092 WAHROONGA 150092

NOTES: A nice big homozygous polled heifer that was 3 months PTIC when tested in mid-June, she should calve before Christmas. 364's dam has a faultless record with three calves and is PTIC. She was mated with a Multisire pairing of GRH230008 and RJS230053 in early January.

June 2024 Belmont Red GROUP BREEDPLAN

	GL	BW	200	400	600	MC	Milk	SS	DC	CW	EMA	Rib	Rump	RBY	IMF	FL	\$ Index Value	
																	SRI	TI
EBV		3.4	22	20	33	31	12	2.5	-1.8	27	2.6	-0.2	0.8	0.7	0.2	-0.02	+39	+33
Acc	%	49%	65%	66%	62%	58%	36%	48%	30%	50%	34%	35%	35%	31%	32%	34		
Rank			25				30	20		35		40	40	25	40			

Breed Avg. EBVs for 2023 Born Calves

EBV	-1.1	+2.3	+18	+21	+32	+37	+10	+1.7	-2.5	+23	+2.6	-0.3	+0.7	+0.5	+0.2	+0.04	+44	+32
-----	------	------	-----	-----	-----	-----	-----	------	------	-----	------	------	------	------	------	-------	-----	-----

Traits Observed: 200WT,400WT

Purchaser:

\$

**LOT
44**

WAHROONGA 240338

ID: RJS240338

TATTOO: 338

HORN: POLL

DOB: 01/11/2023

REGO STATUS: REGISTERED

GRADE: PURE BR

POLL TEST: HP



5ST080965 FIVE STAR 08-965
MTE110686 MT EUGENE 11-686
MTE000113 MT EUGENE 00-113 (AI)
SIRE: MTE190074 MT EUGENE 190074
MTE060740 MT EUGENE 06-740
BEL120378 BELMONT 120378
BEL030403 BELMONT 03-0403

ANIMAL: RJS240338 WAHROONGA 0338

COR17 CORYMBIA GENERIC BR BULL

DAM: COR140005 CORYMBIA 140005

COR16 CORYMBIA GENERIC BR DAM

NOTES: A nice polled heifer that was 3 months PTIC when tested in mid-June. She should calve before Christmas Sired by MTE190074 and the dam is a Corymbia cow that had eight calves for us. She was mated with a Multisire pairing of GRH230008 and RJS230053 in early January.

June 2024 Belmont Red GROUP BREEDPLAN

	GL	BW	200	400	600	MC	Milk	SS	DC	CW	EMA	Rib	Rump	RBY	IMF	FL	\$ Index Value	
																	SRI	TI
EBV		3	22	26	40	46	8	2.4	-0.5	29	2.6	-0.8	-0.2	0.9	0.1	-0.11	+42	+38
Acc	%	50%	67%	68%	63%	61%	45%	51%	30%	51%	32%	33%	32%	30%	30%	48		
Rank			25	30	30	35		25		30				9				30
Breed Avg. EBVs for 2023 Born Calves																		
EBV	-1.1	+2.3	+18	+21	+32	+37	+10	+1.7	-2.5	+23	+2.6	-0.3	+0.7	+0.5	+0.2	+0.04	+44	+32

Traits Observed: 200WT,400WT

Purchaser:

\$

**LOT
45**

WAHROONGA 240216

ID: RJS240216

TATTOO: 216

HORN: POLL

DOB: 15/11/2023

REGO STATUS: REGISTERED

GRADE: 3RD CROSS

POLL TEST: HP



TRE140173 TREMERE 140173

RJS190035 WAHROONGA 190035

BEL100167 BELMONT 100167

SIRE: RJS210171 WAHROONGA 210171

SE130061 SEIFERT BELMONT REDS 130061

RJS180064 WAHROONGA 180064

COR130009 CORYMBIA 130009

ANIMAL: RJS240216 WAHROONGA 0216

NOTES: A polled heifer that was 3 months PTIC when tested in June. Her dam has had seven calves in a row and is PTIC. 216 has a Self-Replacing Index of \$53. She was mated with a Multisire pairing of GRH230008 and RJS230053 in early January.

RJSGENSIRE WAHROONGA MT EUGENE GENERIC SIRE

DAM: RJS170082 WAHROONGA 0082

COR19 CORYMBIA GENERIC BR BULL

COR130001 CORYMBIA 130001

COR18 CORYMBIA GENERIC COW

June 2024 Belmont Red GROUP BREEDPLAN

	GL	BW	200	400	600	MC	Milk	SS	DC	CW	EMA	Rib	Rump	RBY	IMF	FL	\$ Index Value	
																	SRI	TI
EBV		2.2	16	21	32	29	11	2	-3.9	21	2.2	-0.1	1.7	0.3	0.3	0.01	+53	+36
Acc	%	51%	67%	69%	64%	63%	46%	52%	35%	54%	36%	39%	38%	34%	35%	43		
Rank							35	40	30			35	20		25		30	35

Breed Avg. EBVs for 2023 Born Calves

EBV	-1.1	+2.3	+18	+21	+32	+37	+10	+1.7	-2.5	+23	+2.6	-0.3	+0.7	+0.5	+0.2	+0.04	+44	+32
------------	------	------	-----	-----	-----	-----	-----	------	------	-----	------	------	------	------	------	-------	-----	-----

Traits Observed: 200WT,400WT

Purchaser:

\$

**LOT
46**

WAHROONGA 240148

ID: RJS240148

TATTOO: 148

HORN: POLL

DOB: 27/10/2023

PP

REGO STATUS: REGISTERED

GRADE: PURE BR

POLL TEST: PP



TRE120165 TREMERE 120165

TRE160051 TREMERE 160051

TRE080458 TREMERE 080458

SIRE: TRE210675 TREMERE 210675

TRE010567 TREMERE 010567

TRE090190 TREMERE 090190

TRE030356 TREMERE 0356

ANIMAL: RJS240148 WAHROONGA 0148

SEI130061 SEIFERT BELMONT REDS 130061

RJS190065 WAHROONGA 190065

RJS150088 WAHROONGA 150088

DAM: RJS210136 WAHROONGA 210136

COR100014 CORYMBIA 100014

COR150028 CORYMBIA 150028

COR16 CORYMBIA GENERIC BR DAM

NOTES: A homozygous polled heifer sired by TRE210675 that was 10 weeks PTIC in Mid-June and should calve early in the new year. She was mated with a Multisire pairing of GRH230008 and RJS230053 in early January.

June 2024 Belmont Red GROUP BREEDPLAN

	GL	BW	200	400	600	MC	Milk	SS	DC	CW	EMA	Rib	Rump	RBY	IMF	FL	\$ Index Value	
																	SRI	TI
EBV		2	14	18	28	28	9	1.8	0.1	21	2.4	-0.7	0.1	0.5	0.1	0.08	+25	+27
Acc	%	49%	65%	67%	62%	59%	37%	49%	30%	50%	34%	35%	34%	31%	32%	35		
Rank		40														35		
Breed Avg. EBVs for 2023 Born Calves																		
EBV	-1.1	+2.3	+18	+21	+32	+37	+10	+1.7	-2.5	+23	+2.6	-0.3	+0.7	+0.5	+0.2	+0.04	+44	+32

Traits Observed: 200WT,400WT

Purchaser:

\$



AUSTRALIAN BASED

GLOBAL ANIMAL SCIENCE CONSULTANCY

ANIMAL SCIENCE RUMINANT NUTRITION MEAT SCIENCE
BIO-TECHNICAL REPRODUCTION

RUMINANT NUTRITION FORMULATIONS and EVALUATIONS
feedlot, TMR, PMR, intensive grazing, pasture & rangeland

VITAMIN, MICRO MINERAL ANALYSIS
FORMULATION and SUPPLY
assured activity, stability and FULL TRACEABILITY

CARCASE and MEAT SCIENCE
marbling, shelf longevity, pigmentation and tenderness

SUPPLEMENTATION PROGRAMS and BACKGROUNDING
dry lick, molasses / liquid and blocks

COMMODITY SOURCING and SUPPLY
protein meals, fibre, by-products and grain

BIO-TECHNICAL REPRODUCTION and FERTILITY
AI, ET, IVF and cloning – supplementation, pregnancy and bull testing

CONTACT US

0417 115 638

kai@blairagri.com.au

KAI BLAIR

*Dip.Ag B.App.Sc GC.Anim.Sc
M.Anim.Sc*

DIRECTOR

Blair Agri Advisors Pty Ltd JARVIS®
Chief Animal Nutritionist

IAN CROFT

*B.Rural.Sc B.V.Bio
B.V.Sc (HONS 1) M.Ag.Sc*

DIRECTOR

Taroom Vet Clinic
(Joint Owner)

MARK ARCHIBALD

DIRECTOR

Valle Grande Feeders, USA JARVIS®
Feedlot President Feed Yard Design
+ Management

MICHAEL BURGIS

Dip.Ag G.Dip.Ag.Economics

Commodities and
Economic / Financial Planning







LIVESTOCK AUCTION TERMS AND CONDITIONS OF SALE

CHAPTER ONE - PRELIMINARY

1. (a) A vendor is bound by these terms and conditions by offering livestock for sale by auction.
- (b) An agent (which includes an auctioneer) is bound by these terms and conditions by conducting an auction sale.
- (c) A buyer is bound by these terms and conditions by bidding at auction.
- (d) Competition and Consumer Act (Cth) 2010
It is unlawful for parties that are, or otherwise would be, in competition with each other to make, or give effect to, a contract, arrangement or understanding that contains a provision relating to:
 - i. price-fixing; or
 - ii. restricting outputs in the production and supply chain; or
 - iii. allocating customers, suppliers or territories; or
 - iv. bid-rigging; or
 - v. collusive bidding.Large fines and other sanctions may be imposed for unlawful conduct.
2. (a) In these terms the expression auctioneer, agent, buyer and vendor respectively includes the servants, contractors and agents of each of them. The auctioneer, agent, buyer and vendor shall be wholly responsible for the acts and omissions of their respective servants, contractors and agents. The term "auctioneer" includes, so far as the law and context permits, the vendor's agent.
- (b) When used in these terms the expressions "companion animals" means all animals originating from the same property on a particular day. Where lots are split and sent to multiple establishments, then all of these animals shall be regarded as companions.
3. The following applies in interpreting these terms and conditions:
 - (a) The following words have the following meanings:

Fees means all levies, charges, fees, costs and other expenses incurred or relating to these terms and conditions and the sale and purchase of livestock including, without limitation, transaction levies, yard and weigh dues, cartage, advertising and rebates, and whether paid for, or incurred, by the agent;

Livestock means animals auctioned pursuant to these terms and conditions; and

Price means the amount at which the lot has been sold to the buyer referred to in clause 7 of these terms and conditions

 - (i) plus any Fees and other expenses incurred in relation to the purchase of livestock that are payable by the buyer; and
 - (ii) plus any GST added in accordance with clause 12.
 - (b) These terms and conditions are subject to legislation or regulation in the State in which the auction is conducted and in the event of any conflict then the legislation or regulation will prevail. The provisions of these terms and conditions are in addition to, and do not derogate from, the duties and rights of vendors, agents and buyers set out in legislation and regulation in the State in which the auction is conducted.

CHAPTER TWO - STANDARD TERMS OF SALE

4. Subject to any reserve price, and to the right, prior to the fall of the hammer, of the vendor to withdraw any lot without declaring the reserve, the highest bidder shall be the buyer.
5. The auctioneer has the right to bid on behalf of the vendor provided that right is notified prior to the commencement of the sale and is subject to State law.

6. A bid cannot be made or accepted after the fall of the hammer unless, in accordance with clause 8, the auctioneer decides to put the lot up again.
7. Prior to the fall of the hammer the auctioneer shall announce the last bid and receive any further bids. The last price called by the auctioneer at the fall of the hammer shall be the amount at which the lot has been sold.
8. In the event of a disputed bid, the auctioneer is the sole arbitrator of the successful bidder or the auctioneer may decide to put the lot up again. The auctioneer's decision is final.
9. The auctioneer may refuse to accept any bid which, in the auctioneer's opinion, is not in the best interest of the vendor and need not give reasons for doing so.
10. A bidder shall be deemed to be a principal unless, prior to bidding, the bidder has given to the auctioneer a copy of written authority to bid for or on behalf of another person.
11. The successful bidder at a livestock auction sale must give to the auctioneer at the fall of the hammer:
 - (a) the purchaser's name; or
 - (b) the bid card number which identifies the purchaser; or
 - (c) the name of the person on whose behalf the successful bid was made; and
 - (d) the Property Identification Code (known as the "PIC") of destination.
12. The auction shall be conducted on the basis that the bid price shall be exclusive of Goods and Services Tax (GST). GST shall be added after the fall of the hammer for those sales subject to GST.
13. The vendor warrants;
 - (a) That the vendor has (or will have) the right to sell the livestock at the time of delivery; and
 - (b) That the purchaser will obtain title on completion of the purchaser's obligations under this contract including payment.
14. If a buyer does not comply with any of these terms and conditions, which includes the requirements of State law, any livestock knocked down to that buyer may be re-sold by public auction or private contract in whatever lots and manner the auctioneer decides. The re-sale may be with or without notice and shall be at the buyer's risk. The buyer is responsible for all loss and expense arising out of a re-sale and is not entitled to any resulting profit.
15. The buyer of livestock must pay the agent the full amount of the purchase price in immediate funds on receipt of a tax invoice. Payment is required prior to delivery unless some other time for payment is specified in an agreement between the buyer and the auctioneer that was made before the fall of the hammer. If, before delivery, payment has not been made then clauses 20 to 23 apply.
16. No person may bid unless, prior to the commencement of the sale, that person has made arrangements satisfactory to the auctioneer for payment for livestock purchased. If bids in breach of this condition are inadvertently accepted, delivery shall not be given until the purchase money is paid and any law, rule or practice to the contrary is accordingly negated as far as possible relationship with the vendor;
17. (a) Cattle sold on a liveweight basis that are weighed pre-sale are at the risk and expense of the buyer upon the fall of the hammer.
- (b) Cattle sold on a liveweight basis that are weighed post-sale are at the risk and expense of the buyer immediately after weighing.
- (c) All livestock other than cattle sold on a liveweight basis are at the risk and expense of the buyer upon the fall of the hammer.
18. (a) Subject to this clause the sale is complete on the fall of the hammer.
- (b) The time for rejection is the time commencing at the fall of the hammer and ending at the first of:
 - (i) delivery is taken by a representative of the buyer;
 - (ii) departure of the animal from the purchaser's delivery pen; or
 - (iii) one hour after the last animal is:
 - a. in the case of pre-sale weighing, sold; or
 - b. in the case of post-sale weighing, weighed.
- (c) During the time for rejection the buyer may reject any animal which is lame, blind or diseased where that condition existed prior to the fall of the hammer but could not be reasonably observed when the animal was in the selling pen.
- (d) If the purchaser rejects an animal during the time for rejection then the sale of that animal is cancelled and the animal is returned to the vendor or sold on such terms as any buyer and the agent may agree, after the agent has disclosed the reason for rejection to that buyer.
- (e) This subclause applies only to cattle which are sold in Queensland at auction for slaughter. The agent has responsibility for the prevention of loss or escape (but not death, sickness or injury) of those cattle from the time of the fall of the hammer, for delivery to and from the scales, to the buyer's delivery pen and onto the buyer's nominated transport. This responsibility ends at the earlier of those cattle boarding the buyer's nominated transport or sunset on the day after the sale. This subclause does not apply if the agent makes an announcement to that effect prior to sale.
19. (a) Subject to the right of rejection in Clause 18, all conditions and warranties expressed or implied by law are hereby excluded from the sale to the extent that the law allows. All lots are open for inspection prior to the commencement of the sale and are sold with all faults, if any. No compensation shall be given for any faults, imperfections, errors of description, number in or of any lots sold or otherwise.
- (b) Any claim or objection arising out of an error or misdescription in the provision of relevant information in terms of legislation or regulation concerning the National Livestock Identification Scheme (NLIS) must be made by 5:00pm on the seventh day after the fall of the hammer. No objection, requisition or claim against the vendor or agent in respect of such error or misdescription can be made after that time.
- (c) Any statements made by the vendor or the auctioneer whether in writing or orally to the effect that any female has been pregnancy tested or scanned positive shall mean and require only that a certificate in writing shall be supplied to the buyer signed by a qualified veterinary surgeon or certified scanner certifying that the said female has been tested or scanned on the date specified in the certificate and that in the opinion of the surgeon or scanner was pregnant on that date.
- (d) For slaughter cattle, the agent undertakes to make every reasonable effort to ensure that any NLIS cattle device number is transferred from the saleyard PIC to the purchaser's PIC on the NLIS database no later than midnight on the day of the sale.
- (e) For other slaughter livestock the agent undertakes to make every reasonable effort to ensure that the NLIS information is transferred from the saleyard PIC to the purchaser's PIC on the NLIS database no later than midnight on the day of the sale.
- (f) Where livestock have a food safety or market eligibility status derived from the National Vendor Declaration (NVD) and/or the NLIS/ERP database, the agent will inform the buyers by presale catalogue and/or announce the status prior to the offering of those lots.
20. If delivery is made to, or possession obtained by, the buyer or its representative before full payment

of the Price, then until full payment is received, the buyer:

- (a) does not acquire title to the livestock;
- (b) holds the livestock as bailee only for the vendor;
- (c) must act in a fiduciary capacity in its relationship with the vendor;
- (d) must store the stock separately or so that they are readily distinguishable from other livestock owned by the buyer;
- (e) is responsible for the safety and well being of the livestock;
- (f) may make a bona fide sale for market value of any or all of the livestock. As between the buyer and the subsequent buyer, the sale shall be made by the buyer in its own name and not as agent for the vendor, however as between the vendor and buyer, the sale shall be made as bailee and agent for the vendor; and
- (g) must keep and account for the proceeds of any subsequent sale separately from its other money and hold those proceeds, together with the benefits of any rights against subsequent buyers, on trust for the vendor.

21. The purchaser agrees that:

- (a) Clause 20 creates a registrable security interest under the Personal Property Securities Act (Cth) 2009 (PPSA);
- (b) the Purchaser acknowledges the rights of the Seller (and/or the Agent if Clause 25 applies) to register a financing statement under the PPSA with respect to the security interest created by this clause;
- (c) the Livestock are collateral for the purposes of the PPSA;
- (d) to the extent permitted, the Purchaser waives any right the Purchaser has under the PPSA to receive notices; and
- (e) the date upon which the security interest created by this clause comes into force is the first date on which livestock are delivered pursuant to this contract

22. The buyer may not make any claim against the vendor for actions by the vendor or its agent under clauses 20 or 21 and indemnifies the vendor and its agent against any loss, damage, costs, expenses, penalties, fines or claims suffered by the vendor, the agent or any person or entity arising from the vendor exercising its rights under clauses 20 or 21.

23.1. Clause 23 applies whenever the agent pays the vendor before being paid by the buyer, which the agent is not bound to do. The agent is then the del credere agent of the vendor at law.

23.2. The vendor hereby gives notice to the buyer of the assignments referred to in clause 23.3.

23.3. When this clause applies, in addition to any rights of the agent that arise by operation of the law, the parties agree that, subject to clause 23.5 the agent is subrogated to all rights of the vendor under these terms and conditions against the buyer.

23.4. The vendor acknowledges that the agent may take enforcement, repossession or other action to recover any livestock for which the buyer has not paid in full, or the Price of such livestock, owing by the buyer under these terms and conditions:

- (a) when this clause does not apply, as agent of the vendor (including by reselling the livestock); and
- (b) when this clause applies, on the agent's own behalf exercising the rights of the vendor by subrogation or assignment under these terms and conditions (whether in the vendor's name or not) and, where title to the livestock has not passed to the agent, by selling the livestock as agent of the vendor without the agent having to account to the vendor for the proceeds of sale.

23.5. The agent may at any time, assign, transfer, securitise or otherwise dispose of all or any of its rights under these terms and conditions and any debts created pursuant to it (including, without limitation, the rights assigned to it under clause 23.3).

23.6. The vendor hereby irrevocably appoints the agent

as the vendor's attorney to:

- (a) do at any time and in any manner as the agent thinks fit all acts necessary or desirable to perfect or improve the rights and interests afforded, or intended to be afforded, to the agent under these terms and conditions; and
- (b) appoint one or more sub-attorneys to do anything that the agent may do as the vendor's attorney.

23.7. These terms and conditions do not render the agent liable to the buyer as vendor nor entitle the buyer to set off against the agent any right the buyer may have against the vendor or otherwise.

23.8. The buyer acknowledges that the provisions of this clause 23 are intended solely for the benefit of the agent (and its assigns) and the vendor. The liabilities and obligations of the buyer will not be in any way affected:

- (a) by this clause 23, other than as it expressly provides; or
- (b) by the failure of the agent or the vendor or either of them to comply with the terms of this clause 23.

23.9. The buyer must pay all amounts payable to the vendor or the agent under these terms and conditions without any deduction, withholding, set off or counterclaim whatsoever, whether the benefit of a deduction, withholding, set off or counterclaim is alleged to exist in favour of the buyer as against the vendor or the agent in any capacity whatsoever or any other person including any assignor of the vendor's or the buyer's interests under these terms and conditions.

24. (a) The agent agrees that he is liable to pay to the vendor the Price, less such commission as is agreed between the vendor and the agent, and in the absence of any agreement such amount as is reasonable, and less the Fees that are payable by the vendor that were incurred by the agent on behalf of the vendor in relation to the sale of the livestock.

- (b) In the event that the buyer pays the Price or part of it direct to the vendor then the agent has no liability to the vendor for the amount of such payment. Further, if the agent pays the vendor any amount which the buyer also pays direct to the vendor in respect of the same livestock, then the vendor must repay the agent that amount and the agent may debit that amount to an account held in the name of the vendor by the agent.

- (c) Regardless of whether or not a sale has occurred the agent may, but is not under obligation so to do, instead of deducting payments owed to it by the vendor, debit the amount of the commission and fees to an account held in the name of the vendor by the agent.

25. (a) The auctioneer has been retained by the vendor as auctioneer for the purpose of selling the livestock comprised in the lots. The terms of engagement between the auctioneer and the vendor do not extend to the provision of advice by the auctioneer to the vendor in relation to the safety or otherwise of the sale ring, the saleyards and the surrounding environments.

- (b) The vendor, the agent and the buyer agree to comply with their several duties under the Australian Animal Welfare Standards and Guidelines for the Land Transport of Livestock and further to consign, manage, receive, transport and handle livestock in accordance with any other or additional requirements of animal welfare legislation specific to the jurisdiction in which livestock are consigned, managed, received, transported and handled in the course of the auction process.

CHAPTER THREE – VENDOR WARRANTY FOR CORRECT PRESENTATION AND DECLARATION

26. This chapter applies only in the case of livestock and their companion animals sold at auction for slaughter when the buyer is the slaughterer and the livestock are transported direct from the sale yard to the meatworks at which they are slaughtered. This chapter does not apply if the buyer is a trader who subsequently resells the livestock to a slaughterer. A slaughterer is any person who pays the AMPC Processor levy.

27. The warranty of a vendor is that livestock and their companion animals offered for sale at auction:

- (a) pass government and other regulatory authority requirements and inspections at the time of slaughter;.
- (b) are of merchantable quality;
- (c) carry an NLIS device in accordance with State law;
- (d) in the case where a representation has been made in the pre-sale catalogue that the livestock have particular characteristics or are fit for a particular purpose or market, and such representations are based on information in any document, the livestock will have those characteristics or will be fit for the particular purpose or market; and
- (e) all information in any document provided by the vendor is true, complete and correct in all material respects.

28. In the event of a breach by the vendor of the vendor's warranty and provided such breach is notified by the buyer to the agent by 5:00pm on the 7th day after the fall of the hammer then the buyer is not liable to pay the portion of the Price of such of the vendor's livestock to which the breach applies.

29. However if the breach by the vendor is such that the livestock are not rejected outright but are instead downgraded then the buyer will pay the value of the livestock at their next highest and best use.

30. In the case of a breach by the vendor of the vendor's warranty then the vendor will also be liable to the buyer for any further losses which the buyer might establish but the buyer will take all reasonable steps in co-operation with the agent and vendor to mitigate both the effect of the breach and the amount of any loss.

31. Where a sentinel animal of a lot tests positive for chemical residue, or foreign material contamination and provided such test is certified and notified as required by these vendor warranty terms, then:

- (a) the buyer will be entitled to delay payment for the price of all livestock in that lot only; or
- (b) the vendor has the option, at the vendor's cost, of collecting the companion animals, if allowed by law; or of having the livestock slaughtered in which event the risk of further condemnations will be that of the vendor. Where product integrity is potentially jeopardised, the Processor has the right to refuse slaughter and send the livestock back to the consigning property at the vendor's cost.

32. The auctioneer is liable to the buyer in respect of any breach of the vendor's warranty arising out of:

- (a) any error, by the auctioneer, of transcription of information from the NVD completed by the vendor to the pre-sale catalogue or the buyers post-sale summary;
- (b) any failure by the auctioneer to notify the buyer, prior to bidding, of any breach by the vendor of the warranty of the vendor if the buyer establishes that the agent knew of such breach prior to the sale; and
- (c) any failure by the auctioneer to announce prior to bidding, or disclose in the pre-sale catalogue, that the vendor has failed to provide a NVD that is complete in all material aspects.

CHAPTER FOUR - OWNERS RISK FOR CONDITION OF CATTLE

33. This chapter applies only in the case of cattle and their companion animals sold at auction for slaughter when the buyer is the slaughterer and the cattle are transported direct from the sale yard to the meatworks at which they are slaughtered. This chapter does not apply if the buyer is a trader who subsequently resells cattle to a slaughterer. A slaughterer is any person who pays the AMPC Processor levy.

34. Owners risk reflects the producer's responsibility to provide slaughter cattle for sale that are fit for human consumption. Cattle are fit for human consumption if they are not condemned as unfit by government. Owners risk applies if the

condemnation is due to a condition in the animal which the buyer establishes, by the relevant government certificate, existed prior to the fall of the hammer.

35. A buyer with the benefit of owners risk protection is not liable to pay the Price of that animal to the vendor. The buyer remains nevertheless liable for all costs incurred after the fall of the hammer in transport, slaughter, testing and disposal of the animal.
36. Owners risk protection is available to the buyer of cattle to which this chapter applies if all of the following are satisfied:
- (a) a certificate is issued by government which states the relevant NLIS RFID tag number and PIC, the date of the certificate, the reason for condemnation and that the reason for condemnation existed prior to the fall of the hammer;
 - (b) the certificate is received by the selling agent either in its original form or by fax or electronic communication in the form of data, text or imaging by 5:00pm on the 7th day after the fall of the hammer; and
 - (c) if the condemnation is due to chemical residue the certificate follows testing in a government approved laboratory which establishes maximum residue limits in excess of the Australian limit.

37. Owners risk does not apply, and the buyer must pay for the cattle, if the reason for condemnation is any of bruising, fever, partial condemnation or emaciation.

CHAPTER FIVE - NOTICES REQUIRED BY LEGISLATION

NSW Property, Stock and Business Agents Act 2002 Warnings

Penalties for collusive practices. It is an offence against the Property, Stock and Business Agents Act 2002 for a person to do any of the following as a result of a collusive practice, or to induce or attempt to induce another person by a collusive practice to do any of the following:

- (i) to abstain from bidding; or
- (ii) to bid to a limited extent only; or
- (iii) to do any other act that might prevent free and open competition.

Severe penalties may be imposed on persons convicted of collusive practices.

The auctioneer has the right to make one bid on behalf of the vendor if the auctioneer clearly and precisely announces that fact prior to the sale.

Tasmania Legislation.

An auctioneer conducting a public auction must not appear to acknowledge the making of a bid if no bid was made. A person must not participate in collusive

practices by way of making or receiving an unlawful promise to abstain from bidding, not to bid except to a limited extent or do any other thing which may prevent free and open competition.

WA Auction Sales Act 1973 s31 NOTICE.

It is an offence to:

- (i) induce or attempt to induce another person to abstain from bidding by means of a promise, expressed or implied, that the other person will have the right to elect to take over as buyer or to toss or draw lots to establish who is to become the owner;
- (ii) abstain or agree to abstain from bidding as a result of such a promise;
- (iii) knowingly enter or permit or cause to be entered in the auctioneer's record any name other than that of the actual successful bidder;
- (iv) enter in the auctioneer's record the name of the buyer other than that of the actual successful bidder; or
- (v) in the case of successful bidder supply wrong information as to the name of the buyer to the auctioneer or to any person, firm or corporation on whose behalf the sale is conducted.

The vendor, or any person on behalf of the vendor, or the auctioneer have the right to make no more than three bids.



© FEBRUARY 2017 Australian Livestock & Property Agents Association Limited All rights reserved.

Unauthorised reproduction in whole or in part is an infringement of copyright.

These Livestock Auction Terms & Conditions of Sale are provided to ALPA members as recommended terms and conditions only.



NOTES

NOTES



BUYER'S INSTRUCTIONS

BID CARD: _____

Sale Name: _____ Date: _____

Trading Name: _____

Contact Name: _____

Telephone No. _____ Mobile No. _____

Email: _____

Address: _____

Lots Purchased: _____

_____ Total Lots/Head _____

Insurance: Yes / No

Dipping: Yes / No

Delivery Address: _____ PIC No: _____

DELIVERY: Carrier / Own Transport / Agent to Arrange

Pick Up Time: _____ Date: ____/____/____

Name of Carrier: _____ Phone No: _____

Transfer of Registration: Yes / No Stud Name: _____

Membership #: _____

Signature of Buyer/Agent: _____ Date: ____/____/____





A NUTRIEN AG SOLUTIONS PARTNER

STUD SALES

LIVE AUCTIONS & ONLINE SALES
BULLS, FEMALES & GENETICS
PRIVATE SALES | COMMERCIAL SALES
FEEDLOT SALES



gdlrural.com.au



Mark Duthie 0448 016 950
Josh Heck 0409 732 676
Corey Evans 0427 233 999

Tammie Robinson 0499 415 061
Georgie Connor 0428 347 550
Simon Kinbacher 0427 735 620

BIG ENOUGH TO COUNT, *small enough to care*



***"Graceveiw "
Home of Greenhills
Belmont Reds, Toogoolawah***