



TAKE ACTION, INVEST AND JOIN US REIMAGINING THE FUTURE OF THE SOUTHERN QUEENSLAND REGION

There are many rewards for investing funds, resources, time and hope in the landscapes and people of Southern Queensland including:

- » recognition from society of corporate or individual investment (social licence) in natural and cultural assets
- » enhanced flows of good quality water to the Murray Darling Basin, the food bowl of Australia
- » carbon sequestration for greenhouse gas offsetting and climate change mitigation
- » coordinated action for real, lasting on ground outcomes by working with the Community, First Nations, Government, Industry and Academia to achieve efficient and effective return on investment

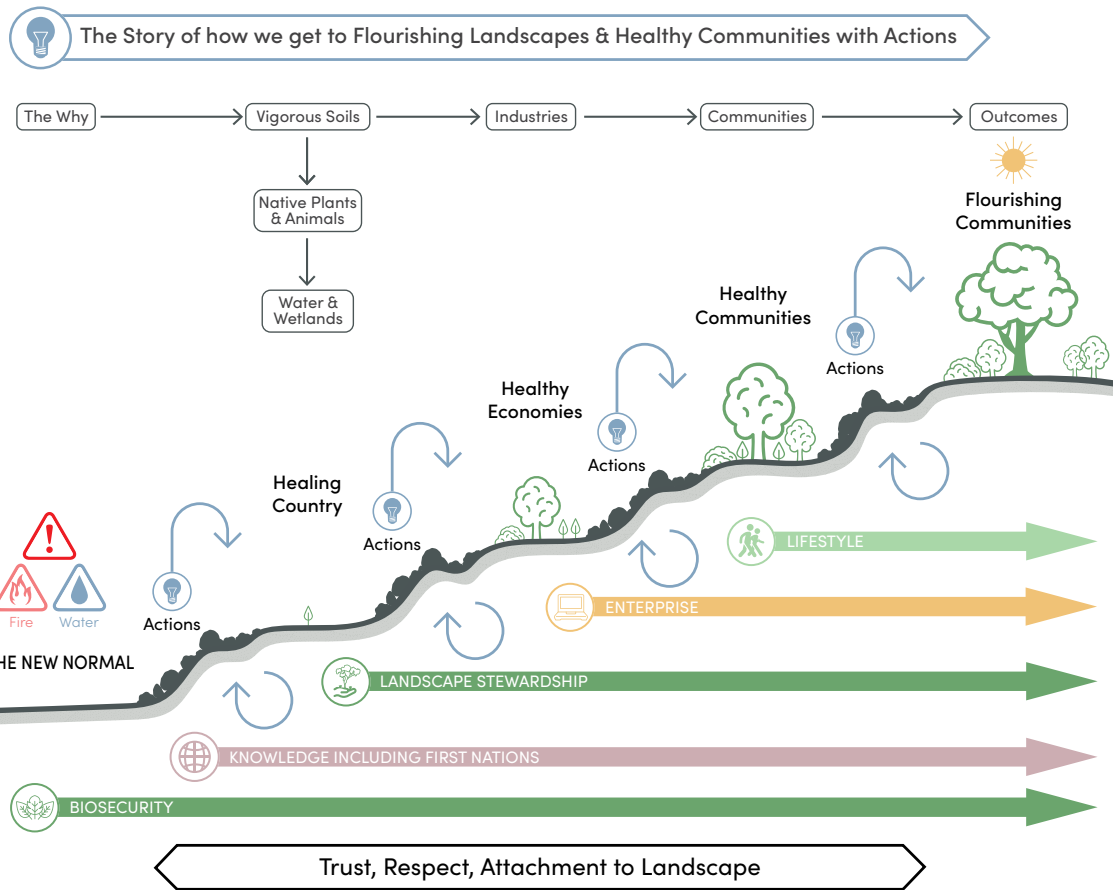


Southern Queensland communities have a special relationship with the Landscape born from a deep connection and a passion to care for the unique and valuable natural and cultural assets of the Region. Regional communities are particularly connected and heavily reliant on each other and the Landscape to provide goods and services, more so than in larger cities to the east.

The Southern Queensland Region is large (a third bigger than the state of Victoria) and diverse (from rangelands to rainforests) linked by relationships between communities, waterways, bushland, First Nation Songlines and stories of the Landscape. The Region is home to approximately 245,480 people with the majority living in greater numbers in the east (around Toowoomba). There are large distances between communities in the west presenting logistical challenges for communication and coordinated action.

Ancestors of the 28 First Nations of Southern Queensland navigated changes in climate as it cycled from wet to dry periods over tens of thousands of years. These landscapes took on great cultural significance as they revealed their stories and were actively cared for to provide food, medicines and fibre. First People continue to play an active role in the ongoing custodianship of the Landscape. A combination of First Nation science and knowledge and other technologies are needed to help heal country.





THE COMMUNITY'S VISION FOR FLOURISHING LANDSCAPES AND HEALTHY COMMUNITIES

Flourishing landscapes with

- ✓ diverse native species,
- ✓ healthy wetlands and other waterways,
- ✓ and vigorous soils,
- ✓ supporting viable, healthy, and connected communities and industries,
- ✓ that value and protect natural and cultural systems.

Pathway to Flourishing Landscapes and Healthy Communities

This Pathway was developed by the community of Southern Queensland to guide action to connect all parts of the Landscape including people. The Pathway starts with Healthy Country as the basis for Healthy Economies and Healthy Communities. Enhancing the relationships between all parts of the Pathway will help achieve Flourishing Landscapes and Healthy Communities.

Building trust and respect for each other and the Landscape is reshaping how the community are working together differently to achieve this Vision. The community are sharing what works based on learnings from the past. A coordinated effort is underway with everyone in the Region playing a part - from the back yard to the paddock.

There is a focus on managing ground cover to avoid long periods of bare ground, increasing the amount of water held in the Landscape and improving the number and connections between native plants and animals and people. This approach will enhance natural and commercial production and offers the best chance of both mitigating the impacts (droughts, flooding, fire etc.) and adapting to changes in the climate and other global shocks such as economic or geopolitical turmoil and global pandemics.

Community vision for Water and Wetlands

– Healthy wetlands and waterways that provide good quality water for plants, animals and people.

Actions:

Restore floodplains, rivers and waterways to improve water quality and soil moisture retention by:

- » managing erosion
- » designing and installing systems for rehydration of floodplains
- » fencing waterways
- » revegetating creek banks
- » restoring wetlands
- » restoring bore drains
- » adopting traditional burning practices
- » managing pest plants and animals
- » reducing nutrient runoff

Restore and reduce threats to the ecological character of Currawinya Lakes, a Wetland of International Importance.

Community vision for Industry

– A diversity of industries based on a circular economy (everything is recycled, reused or repurposed) that integrates renewable energy and rewards land managers for good stewardship.

Actions:

- » Investigate and support the diversification of industry that embraces a circular economy and net zero principles and practices (e.g. alternative energy, tourism, carbon sequestration, waste to energy)
- » Develop systems and programs that recognise good land stewardship
- » Increase the awareness and adoption of land management practices that improve and protect the condition of soil, biodiversity, and vegetation

A vision for Healthy Communities

– First Peoples, Government, community, and industries value and protect natural and cultural systems by sharing knowledge to respect the Landscape as a living breathing entity.

The community is actively Healing Country so that the Landscape and Community can bounce back from economic and extreme events in the near and distant future.

Actions:

Link up all sectors, facilitate conversations and build partnerships across governments, community, academia, industry and First People for natural resource management by:

- » Using the Flourishing Landscape Plan to coordinate planning, investment, action, monitoring and evaluation
- » Investigating and creating a mechanism to share knowledge and science at a local and regional scale
- » Enhancing internet connectivity across the region and linkages in general between country and city

Tracking the Journey

A comprehensive “Tracking the Journey” report will be produced at five yearly intervals as part of a review of the Flourishing Landscapes Plan.

Regular monitoring of progress will occur at a number of scales:

- » Across the whole Southern Queensland Region using spatial data (satellite imagery etc.)
- » At a community level using demographic data (Census etc.)
- » Counting the number and type of knowledge sharing events and engagement activities
- » Measuring the changes in the way Landscapes are managed
- » On ground measures including measuring the change in condition of soil, waterways and vegetation using a number of accepted monitoring tools

For further information on the Flourishing Landscapes Healthy Communities Plan:

- » Email – planning@sqlandscapes.org.au
- » Phone – 07 4620 0111

The complete Flourishing Landscapes Healthy Communities Plan and an interactive StoryMap can be accessed at Southern Queensland Landscapes’ website sqlandscapes.org.au

Factsheets, contacts and other resources to assist the actions above are available in the Plan and/or in the StoryMap.

Acknowledgement of funding

The Flourishing Landscapes Healthy Communities Plan has been developed with and for the community, supported by Southern Queensland Landscapes, through funding from the Australian Government’s National Landcare Program.

