



CATALOG

2A CENTRAL  
NO.430 FRACC.  
SAN FRANCISCO  
ZIP CODE 72,000  
PUEBLA, PUE.  
MEXICO PHONE NO.  
+52 22-22-12-54-88

*El Arte  
Francés*

THE BEST CHANDELIER FACTORY IN  
MEXICO



# *El Arte Francés*

*A* prestigious brand in Mexico, "El Arte Francés" with 80 years of experience, specializes in the manufacture of handcrafted crystal, bronze, brass, and wrought iron chandeliers.

# *Our History*

*With* over eighty years of history since its founding in the city of Puebla, El Arte Francés is a family-owned company that has thrived across generations. We continue to be the leading source of the most beautiful and finely crafted chandeliers made of strass crystal, bronze, brass, and wrought iron, gracing many of the grandest residences in Mexico and abroad. Our pieces also adorn public buildings of architectural significance, museums, churches, and modern luxury hotel spaces.

There's no need to travel abroad to find the latest trends from cities like Miami, New York, Paris, or Milan — you can find it all at “El Arte Francés”

The prestige of our products has been built through years of experience and recognition, both nationally and internationally. This is reflected in awards that honor our quality and service, such as the Gran Premio América and the World Wide Prestige Award.

# *Our Projects*

Among our projects are the Old Basilica of Guadalupe, the Apostolic Nunciature, the residence of Cardinal Norberto Rivera, San Miguel del Milagro, the Basilica of the Virgin of Juquila, as well as various Government Palaces in Puebla, Tlaxcala, Veracruz, Querétaro and Hidalgo. Likewise, we have worked in the Puebla Cathedral, the Shrine of the Lord of the Wonders, the City Theater of Puebla, the Municipal Palace, the Principal Theater, and the Secretariat of Culture of the Government of the City of Puebla. Our trajectory also includes the Old Government Palace —now Salón Candiles—, the Carolino Building, and all the historic houses of the Benemérita Universidad Autónoma de Puebla located in the Historic Center, as well as the Convention Center in Ciudad Universitaria 1 and the Claustro Hall in Ciudad Universitaria 2. In addition, we have manufactured chandeliers for hundreds of municipal palaces, churches, residences, hotels, restaurants and halls throughout Mexico and abroad, whose complete listing would be extensive.

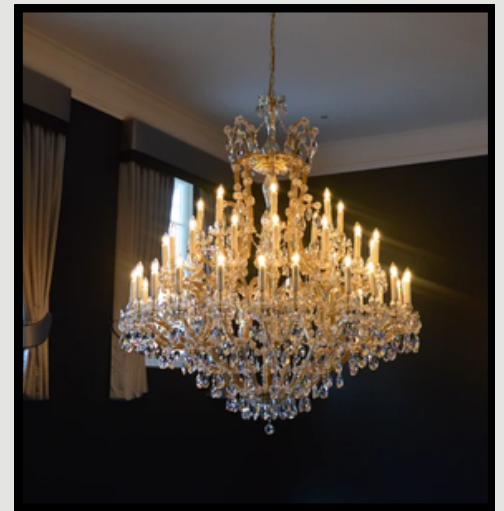
*Contemporary  
Chandeliers*

*El Arte Francés  
80  
Years*

FABRICA DE CANDILES DE PRISMAS

# María Theresa

María Theresa chandeliers are iconic symbols of opulence and grandeur. With a history dating back to the 18th century, these candelabras have become timeless pieces that continue to captivate with their intricate designs and dazzling crystals.



This style of chandelier is recognized as a traditional choice, ideal for classic settings, yet it can also bring an exciting contrast to contemporary and modern spaces.

# Imperial

The elegance and grandeur of the Empire-style chandelier bring an impressive magnificence to any setting. This accessory adds a touch of opulence to any interior décor, whether traditional or contemporary in style.



Each piece radiates light with imperial elegance, creating majestic and refined atmospheres. They are perfect for event halls, hotel lobbies, or interiors seeking to stand out with timeless and classic splendor.

# Bridal Empire



The majesty of the Empire style reaches its highest expression in the Bridal Empire chandeliers. Each piece, adorned with crystal and gold, radiates a romantic and solemn light—perfect for settings where love and beauty are celebrated with grandeur.



# Rococo



Refined and exuberant, the Rococo chandelier is a masterpiece of decorative art. Its curvilinear design, adorned with delicately carved crystals and ornamental details, evokes the splendor of European aristocratic salons. More than just a lighting accessory, it is a timeless declaration of luxury that enhances any space with its sculptural grace and enveloping light.



# Saturn

With its imperial structure in gilded bronze and carved crystals, the Saturn chandelier evokes classical grandeur with a harmonious and majestic design. Ideal for interiors seeking to stand out with distinction, balance, and sophisticated light.



The Saturn chandelier, available in models from 8 to 41 lights, features a classic double- and triple-tier design that provides visual balance and warm, majestic illumination. Ideal for interiors seeking elegance, distinction, and sophistication."

# Milan

The Milan chandelier combines the tradition of the Empire style with a more compact and refined design. Its structure in gilded bronze and finely carved crystals makes it an ideal piece for spaces that require elegance without visual overload. With warm lighting and classic charm, Milan is synonymous with distinction and aesthetic balance



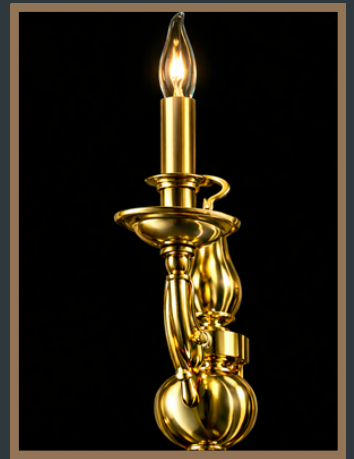
# Mondrian

The Mondrian chandelier blends classic style with a contemporary design featuring clean lines and artistic wrought-iron details. Its shades with decorative filigree cast a soft and welcoming light, ideal for modern spaces that seek to preserve an air of traditional sophistication.



# Londres

The Londres chandelier impresses with its imposing tiered structure and its understated design with clean lines. With a classic gold finish and abundant lighting, this piece evokes the grandeur of ceremonial halls, bringing balance between the majestic and the contemporary.



This style of chandelier is recognized as a traditional option, ideal for classic settings, yet it can also bring an exciting contrast to contemporary and modern spaces."

# Londres with Cristal

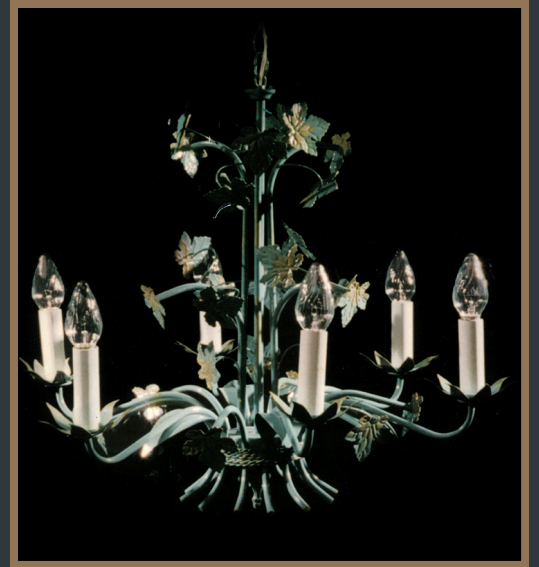


A refined version of the imperial classic, the Londres with Cristal chandelier combines a majestic golden structure with delicate crystal pendants and contemporary details such as decorative shades. Its design balances traditional splendor with modern brilliance, ideal for spaces that seek to stand out with distinction.



# Without Prisms

Chandeliers without prisms stand out for their understated character and strong structural decorative appeal. With metallic finishes, stylized arms, and designs ranging from Baroque to contemporary, these pieces offer a clean and sophisticated aesthetic—ideal for interiors seeking distinction without excessive ornamentation or relying on the sparkle of crystals.



# Forja

Forja chandeliers stand out for their solid structure and artisanal beauty. With curved lines, dark finishes, and a commanding presence, these pieces bring character, warmth, and distinction to any space, offering a truly distinctive touch."



# Florentine

Refined, monumental, and inspired by classical Italian artistry, the Florentine chandeliers pay tribute to the elegance of decorative tradition. With cascading crystal arms, graceful curves, and a warm, enveloping glow, each piece transforms interiors into grand, theatrical spaces.



# Venus

The Venus collection captures the delicate harmony between romance and tradition. Featuring graceful curves, antique finishes, and crystal details, each piece exudes warmth and timeless charm. Ideal for intimate spaces, classic interiors, or venues seeking a soft and elegant glow,



# Victoria

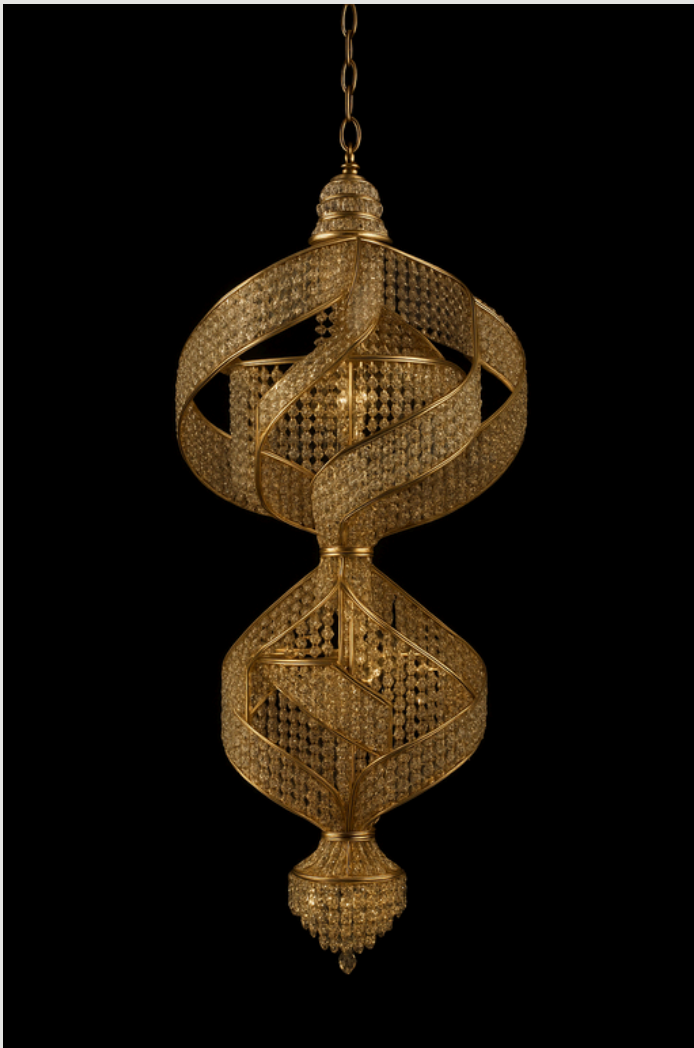
Inspired by the grandeur of the Victorian era, the Victoria collection brings timeless elegance to life. With ornate bronze finishes, candle-style lights, and shimmering crystal drops, each piece evokes the charm of antique craftsmanship.



Ideal for formal dining rooms, historic spaces, or interiors that seek to blend warmth with aristocratic refinement, Victoria chandeliers are a celebration of tradition, romance, and luminous beauty.

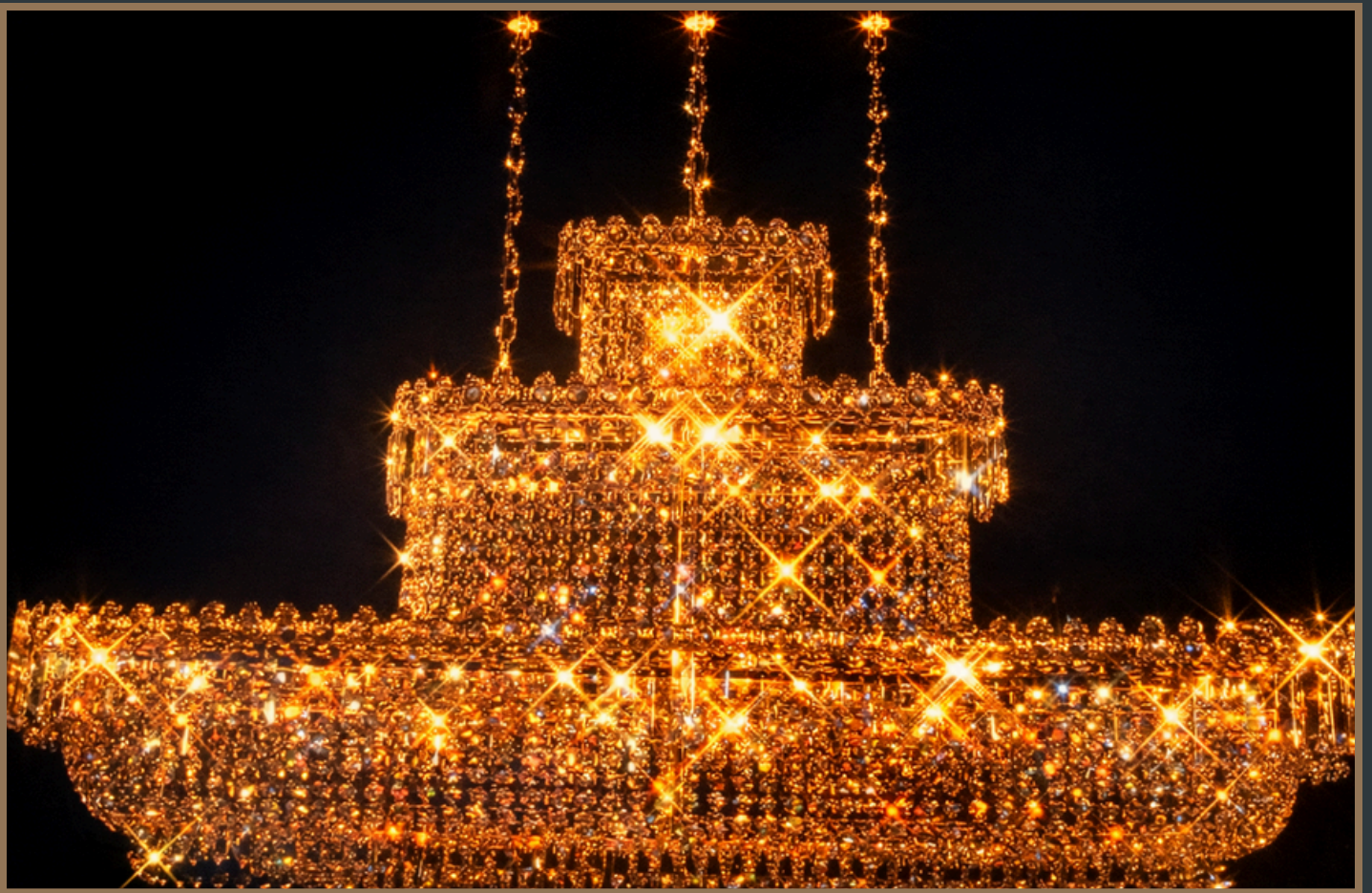
# *Swarovski*

The Swarovski collection captures the brilliance of crystal in its most sculptural form. With bold silhouettes, refined gold finishes, and cascading crystal strands, each chandelier becomes a luminous centerpiece ideal for contemporary interiors seeking timeless elegance with a touch of artistry.



# *Contemporanean Collection*

*This collection embraces bold design and innovative elegance. With sculptural lines, metallic finishes, and artistic glasswork, each chandelier in the Contemporanean Collection blends architectural flair with ambient warmth.*



# *Contemporanean Collection*

*This collection embraces bold design and innovative elegance. With sculptural lines, metallic finishes, and artistic glasswork, each chandelier in the Contemporanean Collection blends architectural flair with ambient warmth.*



# *European Collection*

*Inspired by the elegance of traditional European craftsmanship, this collection blends sculptural brass structures with softly etched glass shades. Each chandelier evokes the grandeur of 19th-century salons, offering a warm, golden glow that enriches any space with history and sophistication.*



*Flush Mount*

*El Arte Francés*  
*80*  
*Years*

FABRICA DE CANDILES DE PRISMAS

# Flush Mount

Flush mount chandeliers offer a refined lighting solution for spaces with lower ceilings, without compromising on luxury. Designed with intricate crystal arrangements and elegant finishes, these fixtures provide a soft, brilliant glow while maintaining a discreet profile.



# Canasta

The chandeliers from the Canastas line stand out for their enveloping shape and harmonious cascade of crystals, evoking movement and delicacy. Models like Lluvia, Caracol, and Argelia offer a versatile take on the Empire style ideal for spaces seeking a focal point with fluid elegance and a contemporary touch.



*Wall Sonce*

*El Arte Francés*  
*80*  
*Years*

FABRICA DE CANDILES DE PRISMAS

# Wall Sconce

Wall sconces complement any collection with their vertical elegance and ornamental details. Whether featuring cut crystal or designer shades, they provide ambient lighting and a sophisticated accent for classic or modern walls.



*Its ornate design not only illuminates, but transforms any space into a visual experience.*

# Wall Sconce

Wall sconces complement any collection with their vertical elegance and ornamental details. Whether featuring cut crystal or designer shades, they provide ambient lighting and a sophisticated accent for classic or modern walls.



More than just a light source, wall sconces are decorative pieces that bring elegance, height, and character to any wall. Their design featuring cut crystals or fine shades creates a sophisticated atmosphere.

*Table Lamps*

*El Arte Francés*  
*80*  
*Years*

FABRICA DE CANDILES DE PRISMAS

# Lamps

Inspired by classic charm, these table lamps combine pleated fabric shades, ornate bases, and a warm light that invites tranquility.



Their timeless design brings sophistication to bedrooms, living rooms, or studies, blending nostalgia and elegance with delicate distinction.

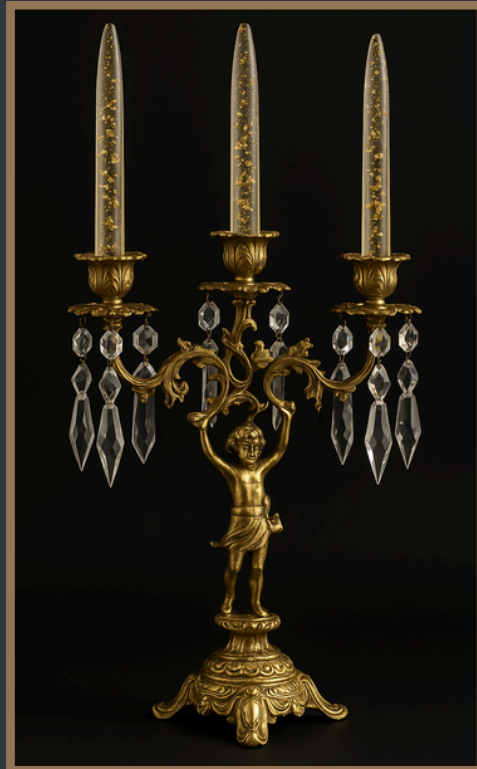


More than just a lamp, it's a decorative piece that brings elegance, nostalgia, and character to any space — from bedrooms to boutique hotels. Perfect for those who seek to illuminate with beauty and distinction.

# Candelabrum

These candelabrum evoke the classical essence of decorative art with metal structures, ornamental arms, and an imposing presence.

With or without crystals, these pieces provide warm lighting and a ceremonial air that enhances both formal spaces and intimate corners with style and tradition.



*21st century*

*El Arte Francés*  
*Years*

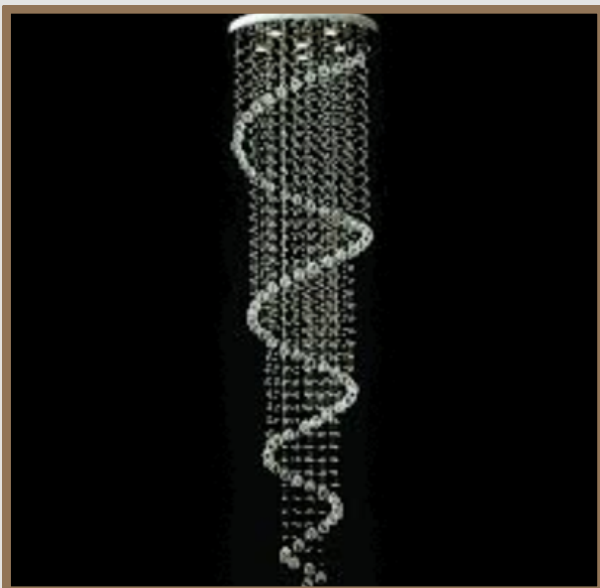
FABRICA DE CANDILES DE PRISMAS

# 21st Century

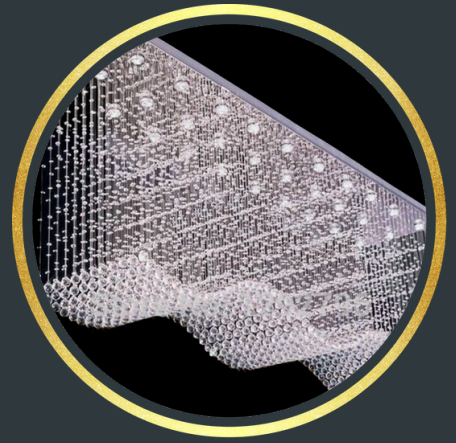
*A*vant garde designs that challenge convention.

The 21st Century Collection stands out with sculptural forms, metallic chains, and fluid drops that transform light into contemporary art.

Perfect for bold spaces, these chandeliers combine innovation, elegance, and character.



# 21<sup>st</sup> Century



The 21st Century Collection is a bold and contemporary proposal where design breaks away from tradition to give way to organic forms, floating structures, metallic chains, and compositions that appear suspended in time.



*Grand Spaces*

*El Arte Francés*  
*80*  
*Years*

FABRICA DE CANDILES DE PRISMAS

# Grand Spaces



When the scale of a space demands grandeur, our chandeliers respond with majesty. Designed to grace iconic venues such as temples, auditoriums, and historic halls, these monumental pieces do more than illuminate — they elevate the architectural experience.

# Grand spaces

## Monumental Chandeliers

*There are pieces that do more than illuminate. . . they command presence, define visual hierarchies, and transform the soul of a space.*



# *Services we Offer*

At El Arte Frances we proudly offer a full range of specialized services for crystal chandeliers.

- Custom manufacturing of bronze-frame crystal chandeliers.
- Tailor-made designs to suit your taste, needs, and budget.
- Professional cleaning and restoration of antique or damaged chandeliers.
- Trade-in options for your existing chandelier toward a new or different model.
- Chandelier, sconce, and candelabrum rentals for special occasions and events.
- Chandelier accessories, including crystal prisms, pendants, octagons, light bulbs, chains, bobaches and more.

What was once a forgotten relic, worn by time and neglect, is now reborn as a radiant masterpiece.

At El Arte Francés, we specialize in breathing new life into antique chandeliers through meticulous, handcrafted restoration.

Each piece is entirely restored by hand — from the bronze structure to the crystal prisms — using traditional techniques passed down through generations. We reshape, polish, and reassemble every element with precision and passion. This is 100% artisanal work, where no detail is overlooked and no machine replaces the human touch.

*El Arte Francés*  
*80*  
*Years*

FABRICA DE CANDILES DE PRISMAS