



# MUNDEN

## FUNERAL HOME

*Family Owned & Operated Since 1955*

# Burial Caskets

### MUNDEN FUNERAL HOME & CREMATORY INC.

2112 Arendell Street, Morehead City, NC 28557 (252) 726-8066  
www.mundenfuneralhome.net info@mundenfuneralhome.net

### MUNDEN FUNERAL HOME & CREMATIONS

908 Lake Road, Havelock, NC 28532 (252) 444-6248  
www.mundenfuneralhome.net havelock@mundenfuneralhome.net

Munden Funeral Home is licensed by the NC Board of Funeral Service, located at 1033 Wade Ave., Ste. 108, Raleigh, NC 27605, Phone 919-733-9380.

You may contact the Board at any time you wish to comment on our services.

This statement of disclosure is provided pursuant to the requirements of North Carolina General Statutes 90-210.25(e).

The goods and services shown are those we can provide to our customers. You may choose only the items you desire. However, any funeral arrangements you select will include a charge for our basic services and overhead. If legal or other requirements mean you must buy any items you did not specifically ask for, we will explain the reason in writing on the statement we provide describing the funeral goods and services selected.

Prices Listed Are Effective As Of October 15, 2025

Metal

## FEATURES:

- Accepts Decorative Casket Panel
- Brown Exterior Color
- Brown Painted Finish
- Brushed Finish
- Champagne Velvet Interior
- Constructed of Copper 32 oz.
- Limited Warranty
- Living Memorial® Program
- Memorial Record® System
- Memory Safe® Drawer
- Semi-precious metal, naturally resistant to rust and corrosion
- Suitable for Burial



Batesville reserves the right to change or update any products (including, without limitation, features, attributes and descriptions) at any time without notice. While Batesville strives to maintain accurate product information and images both digitally and in print, (1) product changes may potentially result in the existence of outdated product information and (2) actual products delivered may contain slight design/color variations. Customers are encouraged to visit [Batesville.com](http://Batesville.com) to obtain the most current product information and specifications needed for purchase decisions.

Y39 884 IDH Aegean Copper  
147935

**\$7,995.00**



## FEATURES:

- 4 Family Choices® Personalization Features Available
- Accepts Decorative Casket Panel
- Antique Hardware
- Basic Series Chromium Stainless Steel
- Blue Exterior Color
- Blue Painted Finish
- Brushed Finish
- Charpente® Interior System
- Constructed of Steel Basic Stainless
- Limited Warranty
- Living Memorial® Program
- Memorial Record® System
- Memory Safe® Drawer
- Silver Velvet Interior
- Suitable for Burial



Batesville reserves the right to change or update any products (including, without limitation, features, attributes and descriptions) at any time without notice. While Batesville strives to maintain accurate product information and images both digitally and in print, (1) product changes may potentially result in the existence of outdated product information and (2) actual products delivered may contain slight design/color variations. Customers are encouraged to visit [Batesville.com](http://Batesville.com) to obtain the most current product information and specifications needed for purchase decisions.

UG1 828 CDH Silver Sapphire  
185491

**\$5,950.00**



## FEATURES:

- Accepts Decorative Casket Panel
- Basic Series Chromium Stainless Steel
- Blue Exterior Color
- Blue Painted Finish
- Brushed Finish
- Constructed of Steel Basic Stainless
- Embroidered Cap Panel Design
- Light Blue Velvet Interior
- Limited Warranty
- Living Memorial® Program
- Memorial Record® System
- Suitable for Burial



Batesville reserves the right to change or update any products (including, without limitation, features, attributes and descriptions) at any time without notice. While Batesville strives to maintain accurate product information and images both digitally and in print, (1) product changes may potentially result in the existence of outdated product information and (2) actual products delivered may contain slight design/color variations. Customers are encouraged to visit [Batesville.com](http://Batesville.com) to obtain the most current product information and specifications needed for purchase decisions.

U04 872 DH Blue Mist  
147903

**\$5,650.00**

## FEATURES:

- Accepts Decorative Casket Panel
- Basic Series Chromium Stainless Steel
- Brushed Finish
- Constructed of Steel Basic Stainless
- Embroidered Overthrow and Cap Panel
- Limited Warranty
- Living Memorial® Program
- Memorial Record® System
- Moss Pink Velvet Interior
- Purple Painted Finish
- Suitable for Burial
- Violet Exterior Color



Batesville reserves the right to change or update any products (including, without limitation, features, attributes and descriptions) at any time without notice. While Batesville strives to maintain accurate product information and images both digitally and in print, (1) product changes may potentially result in the existence of outdated product information and (2) actual products delivered may contain slight design/color variations. Customers are encouraged to visit [Batesville.com](http://Batesville.com) to obtain the most current product information and specifications needed for purchase decisions.

U46 844 NDH Tapestry Rose  
147901

**\$5,650.00**

## FEATURES:

- 1 Family Choices® Personalization Features Available
- Blue Exterior Color
- Blue Painted Finish
- Blue with Silver Trim Velvet Interior
- Constructed of Steel 18 ga. Medium Weight
- Living Memorial® Program
- Memorial Record® System
- Memory Safe® Drawer
- Military Branch Embroidery Emblem, Family Choices LifeSymbols or Display Medallions design feature (1)
- Suitable for Burial



Batesville reserves the right to change or update any products (including, without limitation, features, attributes and descriptions) at any time without notice. While Batesville strives to maintain accurate product information and images both digitally and in print, (1) product changes may potentially result in the existence of outdated product information and (2) actual products delivered may contain slight design/color variations. Customers are encouraged to visit [Batesville.com](http://Batesville.com) to obtain the most current product information and specifications needed for purchase decisions.

N01 8BS H Sydney  
279143

**\$4,350.00**

## FEATURES:

- 1 Family Choices® Personalization Features Available
- Black Exterior Color
- Black Painted Finish
- Black with Gold Trim Velvet Interior
- Constructed of Steel 18 ga. Medium Weight
- Living Memorial® Program
- Memorial Record® System
- Memory Safe® Drawer
- Military Branch Embroidery Emblem, Family Choices LifeSymbols or Display Medallions design feature (1)
- Suitable for Burial



Batesville reserves the right to change or update any products (including, without limitation, features, attributes and descriptions) at any time without notice. While Batesville strives to maintain accurate product information and images both digitally and in print, (1) product changes may potentially result in the existence of outdated product information and (2) actual products delivered may contain slight design/color variations. Customers are encouraged to visit [Batesville.com](http://Batesville.com) to obtain the most current product information and specifications needed for purchase decisions.

N01 8BG H Midnight  
279142

**\$4,350.00**

## FEATURES:

- 1 Family Choices® Personalization Features Available
- Black Exterior Color
- Black Painted Finish
- Black with Red Trim Velvet Interior
- Constructed of Steel 18 ga. Medium Weight
- Living Memorial® Program
- Memorial Record® System
- Memory Safe® Drawer
- Military Branch Embroidery Emblem, Family Choices LifeSymbols or Display Medallions design feature (1)
- Suitable for Burial



Batesville reserves the right to change or update any products (including, without limitation, features, attributes and descriptions) at any time without notice. While Batesville strives to maintain accurate product information and images both digitally and in print, (1) product changes may potentially result in the existence of outdated product information and (2) actual products delivered may contain slight design/color variations. Customers are encouraged to visit [Batesville.com](http://Batesville.com) to obtain the most current product information and specifications needed for purchase decisions.

N01 8MR H Midnight  
279141

**\$4,350.00**



## FEATURES:

- 1 Family Choices® Personalization Features Available
- Blue Exterior Color
- Blue Painted Finish
- Blue with Silver Trim Velvet Interior
- Constructed of Steel 18 ga. Medium Weight
- Living Memorial® Program
- Memorial Record® System
- Memory Safe® Drawer
- Military Branch Embroidery Emblem, Family Choices LifeSymbols or Display Medallions design feature (1)
- Suitable for Burial



Batesville reserves the right to change or update any products (including, without limitation, features, attributes and descriptions) at any time without notice. While Batesville strives to maintain accurate product information and images both digitally and in print, (1) product changes may potentially result in the existence of outdated product information and (2) actual products delivered may contain slight design/color variations. Customers are encouraged to visit [Batesville.com](http://Batesville.com) to obtain the most current product information and specifications needed for purchase decisions.

N01 8BS H Neopolitan  
279144

**\$4,350.00**

## FEATURES:

- 3 Family Choices® Personalization Features Available
- Accepts Decorative Casket Panel
- Champagne Velvet Interior
- Constructed of Steel 18 ga. Medium Weight
- Grey Exterior Color
- Grey Painted Finish
- Limited Warranty
- Living Memorial® Program
- Memorial Record® System
- Memory Safe® Drawer
- Reversible Pillow and Overthrow
- Suitable for Burial



Batesville reserves the right to change or update any products (including, without limitation, features, attributes and descriptions) at any time without notice. While Batesville strives to maintain accurate product information and images both digitally and in print, (1) product changes may potentially result in the existence of outdated product information and (2) actual products delivered may contain slight design/color variations. Customers are encouraged to visit [Batesville.com](http://Batesville.com) to obtain the most current product information and specifications needed for purchase decisions.

O61 8J6 HDH Burnished Silver  
273553

**\$4,295.00**

## FEATURES:

- 3 Family Choices® Personalization Features Available
- Accepts Decorative Casket Panel
- Champagne Velvet Interior
- Constructed of Steel 18 ga. Medium Weight
- Gold Exterior Color
- Gold Painted Finish
- Limited Warranty
- Living Memorial® Program
- Memorial Record® System
- Memory Safe® Drawer
- Reversible Pillow and Overthrow
- Suitable for Burial



Batesville reserves the right to change or update any products (including, without limitation, features, attributes and descriptions) at any time without notice. While Batesville strives to maintain accurate product information and images both digitally and in print, (1) product changes may potentially result in the existence of outdated product information and (2) actual products delivered may contain slight design/color variations. Customers are encouraged to visit [Batesville.com](http://Batesville.com) to obtain the most current product information and specifications needed for purchase decisions.

O61 8J6 HDH Cashmere  
273663

**\$4,295.00**



## FEATURES:

- 3 Family Choices® Personalization Features Available
- Accepts Decorative Casket Panel
- Brushed Finish
- Constructed of Steel 18 ga. Medium Weight
- Ivory Velvet Interior
- Limited Warranty
- Living Memorial® Program
- Memorial Record® System
- Silver Exterior Color
- Silver Painted Finish
- Suitable for Burial



Batesville reserves the right to change or update any products (including, without limitation, features, attributes and descriptions) at any time without notice. While Batesville strives to maintain accurate product information and images both digitally and in print, (1) product changes may potentially result in the existence of outdated product information and (2) actual products delivered may contain slight design/color variations. Customers are encouraged to visit [Batesville.com](http://Batesville.com) to obtain the most current product information and specifications needed for purchase decisions.

OT9 8L7 DH Platinum  
211993

**\$4,095.00**



## FEATURES:

- 3 Family Choices® Personalization Features Available
- Accepts Decorative Casket Panel
- Brushed Finish
- Champagne Velvet Interior
- Constructed of Steel 18 ga. Medium Weight
- Green Exterior Color
- Green Painted Finish
- Limited Warranty
- Living Memorial® Program
- Memorial Record® System
- Suitable for Burial



Batesville reserves the right to change or update any products (including, without limitation, features, attributes and descriptions) at any time without notice. While Batesville strives to maintain accurate product information and images both digitally and in print, (1) product changes may potentially result in the existence of outdated product information and (2) actual products delivered may contain slight design/color variations. Customers are encouraged to visit [Batesville.com](http://Batesville.com) to obtain the most current product information and specifications needed for purchase decisions.

OT9 8L7 DH Huntington Green  
280256

**\$4,095.00**

## FEATURES:

- 1 Family Choices® Personalization Features Available
- Accepts Decorative Casket Panel
- Blue Exterior Color
- Blue Painted Finish
- Constructed of Steel 18 ga. Medium Weight
- Family Choices® Personalization LifeView Decorative Casket Panel
- Ivory Woven Interior
- Limited Warranty
- Living Memorial® Program
- Memorial Record® System
- Suitable for Burial



Batesville reserves the right to change or update any products (including, without limitation, features, attributes and descriptions) at any time without notice. While Batesville strives to maintain accurate product information and images both digitally and in print, (1) product changes may potentially result in the existence of outdated product information and (2) actual products delivered may contain slight design/color variations. Customers are encouraged to visit [Batesville.com](http://Batesville.com) to obtain the most current product information and specifications needed for purchase decisions.

NL1 8K3 H Indigo Blue  
251972

**\$3,995.00**



## FEATURES:

- 1 Family Choices® Personalization Features Available
- Accepts Decorative Casket Panel
- Constructed of Steel 18 ga. Medium Weight
- Dual Overlay (Lace or Tailored) Feature
- Family Choices® Personalization LifeView Decorative Casket Panel
- Limited Warranty
- Living Memorial® Program
- Memorial Record® System
- Moss Pink Velvet Interior
- Purple Painted Finish
- Suitable for Burial
- Violet Exterior Color



Batesville reserves the right to change or update any products (including, without limitation, features, attributes and descriptions) at any time without notice. While Batesville strives to maintain accurate product information and images both digitally and in print, (1) product changes may potentially result in the existence of outdated product information and (2) actual products delivered may contain slight design/color variations. Customers are encouraged to visit [Batesville.com](http://Batesville.com) to obtain the most current product information and specifications needed for purchase decisions.

NL1 8K3 UDH Tuscany  
258113

**\$3,895.00**



## FEATURES:

- 1 Family Choices® Personalization Features Available
- Accepts Decorative Casket Panel
- Blue Exterior Color
- Blue Painted Finish
- Constructed of Steel 18 ga. Medium Weight
- Dual Overlay (Lace or Tailored) Feature
- Family Choices® Personalization LifeView Decorative Casket Panel
- Ivory Woven Interior
- Limited Warranty
- Living Memorial® Program
- Memorial Record® System
- Suitable for Burial



Batesville reserves the right to change or update any products (including, without limitation, features, attributes and descriptions) at any time without notice. While Batesville strives to maintain accurate product information and images both digitally and in print, (1) product changes may potentially result in the existence of outdated product information and (2) actual products delivered may contain slight design/color variations. Customers are encouraged to visit [Batesville.com](http://Batesville.com) to obtain the most current product information and specifications needed for purchase decisions.

OC1 8K3 UH Finch  
280218

**\$3,850.00**



## FEATURES:

- Accepts Decorative Casket Panel
- Blue Exterior Color
- Blue Painted Finish
- Constructed of Steel 18 ga. Medium Weight
- Light Blue Crepe Interior
- Limited Warranty
- Living Memorial® Program
- Memorial Record® System
- Suitable for Burial



Batesville reserves the right to change or update any products (including, without limitation, features, attributes and descriptions) at any time without notice. While Batesville strives to maintain accurate product information and images both digitally and in print, (1) product changes may potentially result in the existence of outdated product information and (2) actual products delivered may contain slight design/color variations. Customers are encouraged to visit [Batesville.com](http://Batesville.com) to obtain the most current product information and specifications needed for purchase decisions.

N84 896 D Antique Blue  
148004

**\$3,795.00**



## FEATURES:

- 1 Family Choices® Personalization Features Available
- Accepts Decorative Casket Panel
- Charpente® Interior System
- Constructed of Steel 18 ga. Medium Weight
- Family Choices® Personalization LifeView Decorative Casket Panel
- Grey Exterior Color
- Grey Painted Finish
- Limited Warranty
- Living Memorial® Program
- Memorial Record® System
- Memory Safe® Drawer
- Rosetan Crepe Interior
- Suitable for Burial



Batesville reserves the right to change or update any products (including, without limitation, features, attributes and descriptions) at any time without notice. While Batesville strives to maintain accurate product information and images both digitally and in print, (1) product changes may potentially result in the existence of outdated product information and (2) actual products delivered may contain slight design/color variations. Customers are encouraged to visit [Batesville.com](http://Batesville.com) to obtain the most current product information and specifications needed for purchase decisions.

N01 8K3 CDH Granite  
239721

**\$3,795.00**

## FEATURES:

- Blue Exterior Color
- Blue Painted Finish
- Brushed Finish
- Constructed of Steel 18 ga. Medium Weight
- Limited Warranty
- Living Memorial® Program
- Optional Decorative Kit Personalization
- Silver Velvet Interior
- Suitable for Burial



Batesville reserves the right to change or update any products (including, without limitation, features, attributes and descriptions) at any time without notice. While Batesville strives to maintain accurate product information and images both digitally and in print, (1) product changes may potentially result in the existence of outdated product information and (2) actual products delivered may contain slight design/color variations. Customers are encouraged to visit [Batesville.com](http://Batesville.com) to obtain the most current product information and specifications needed for purchase decisions.

N18 8K9 D Vega Sapphire  
281895

**\$3,695.00**

## FEATURES:

- Constructed of Steel 18 ga. Medium Weight
- Limited Warranty
- Living Memorial® Program
- Moss Pink Crepe Interior
- Optional Decorative Kit Personalization
- Suitable for Burial
- White Exterior Color
- White Painted Finish



Batesville reserves the right to change or update any products (including, without limitation, features, attributes and descriptions) at any time without notice. While Batesville strives to maintain accurate product information and images both digitally and in print, (1) product changes may potentially result in the existence of outdated product information and (2) actual products delivered may contain slight design/color variations. Customers are encouraged to visit [Batesville.com](http://Batesville.com) to obtain the most current product information and specifications needed for purchase decisions.

N19 8K9 DH Virgo White/Copper  
279134

**\$3,650.00**

## FEATURES:

- 4 Family Choices® Personalization Features Available
- Accepts Decorative Casket Panel
- Burgandy Exterior Color
- Burgundy Painted Finish
- Champagne Velvet Interior
- Charpente® Interior System
- Constructed of Steel 20 ga.
- Limited Warranty
- Living Memorial® Program
- Memorial Record® System
- Suitable for Burial



Batesville reserves the right to change or update any products (including, without limitation, features, attributes and descriptions) at any time without notice. While Batesville strives to maintain accurate product information and images both digitally and in print, (1) product changes may potentially result in the existence of outdated product information and (2) actual products delivered may contain slight design/color variations. Customers are encouraged to visit [Batesville.com](http://Batesville.com) to obtain the most current product information and specifications needed for purchase decisions.

M39 825 CH Auburn  
271815

**\$3,550.00**



## FEATURES:

- Accepts Decorative Casket Panel
- Brown Exterior Color
- Brown Painted Finish
- Constructed of Steel 20 ga.
- Limited Warranty
- Living Memorial® Program
- Memorial Record® System
- Rosetan Crepe Interior
- Suitable for Burial



Batesville reserves the right to change or update any products (including, without limitation, features, attributes and descriptions) at any time without notice. While Batesville strives to maintain accurate product information and images both digitally and in print, (1) product changes may potentially result in the existence of outdated product information and (2) actual products delivered may contain slight design/color variations. Customers are encouraged to visit [Batesville.com](http://Batesville.com) to obtain the most current product information and specifications needed for purchase decisions.

Q88 832 A Roman  
148031

**\$3,250.00**

## FEATURES:

- Constructed of Steel 20 ga.
- Ivory Crepe Interior
- Limited Warranty
- Living Memorial® Program
- Suitable for Burial
- White Exterior Color
- White Painted Finish



Batesville reserves the right to change or update any products (including, without limitation, features, attributes and descriptions) at any time without notice. While Batesville strives to maintain accurate product information and images both digitally and in print, (1) product changes may potentially result in the existence of outdated product information and (2) actual products delivered may contain slight design/color variations. Customers are encouraged to visit [Batesville.com](http://Batesville.com) to obtain the most current product information and specifications needed for purchase decisions.

QD2 8F3 A Pisces White  
257953

**\$2,695.00**

## FEATURES:

- Accepts Decorative Casket Panel
- Constructed of Steel 20 ga.
- Ivory Crepe Interior
- Limited Warranty
- Living Memorial® Program
- Memorial Record® System
- Silver Exterior Color
- Silver Painted Finish
- Suitable for Burial



Batesville reserves the right to change or update any products (including, without limitation, features, attributes and descriptions) at any time without notice. While Batesville strives to maintain accurate product information and images both digitally and in print, (1) product changes may potentially result in the existence of outdated product information and (2) actual products delivered may contain slight design/color variations. Customers are encouraged to visit [Batesville.com](http://Batesville.com) to obtain the most current product information and specifications needed for purchase decisions.

Q98 847 A Antique Silver  
279860

**\$2,350.00**

# Dimensions



## FEATURES:

- 1 Family Choices® Personalization Features Available
- Accepts Decorative Casket Panel
- Constructed of Select Hardwoods and Veneers
- Dark Exterior Color
- Family Choices® Personalization LifeView Decorative Casket Panel
- Living Memorial® Program
- Memorial Record® System
- Pre-Interment Warranty
- Red Painted Finish
- Rosetan Crepe Interior
- Satin Finish
- Select Hardwoods and Veneers
- Suitable for Burial or Cremation
- Victorian Cherry Stain
- Wood Bars



Batesville reserves the right to change or update any products (including, without limitation, features, attributes and descriptions) at any time without notice. While Batesville strives to maintain accurate product information and images both digitally and in print, (1) product changes may potentially result in the existence of outdated product information and (2) actual products delivered may contain slight design/color variations. Customers are encouraged to visit [Batesville.com](http://Batesville.com) to obtain the most current product information and specifications needed for purchase decisions.

4WD 8J5 HD Weldon-27  
245985

**\$4,495.00**



## FEATURES:

- Black Exterior Color
- Black Painted Finish
- Constructed of Steel 20 ga.
- Ivory Crepe Interior
- Limited Warranty
- Living Memorial® Program
- Optional Decorative Kit Personalization
- Oversize Burial Vault Required
- Suitable for Burial



Batesville reserves the right to change or update any products (including, without limitation, features, attributes and descriptions) at any time without notice. While Batesville strives to maintain accurate product information and images both digitally and in print, (1) product changes may potentially result in the existence of outdated product information and (2) actual products delivered may contain slight design/color variations. Customers are encouraged to visit [Batesville.com](http://Batesville.com) to obtain the most current product information and specifications needed for purchase decisions.

CM5 8G0 Hercules Black-32  
265532

**\$3,995.00**



## FEATURES:

- 1 Family Choices® Personalization Features Available
- Accepts Decorative Casket Panel
- Constructed of Steel 20 ga.
- Gold Exterior Color
- Gold Painted Finish
- Limited Warranty
- Living Memorial® Program
- Memorial Record® System
- Rosetan Crepe Interior
- Suitable for Burial



Batesville reserves the right to change or update any products (including, without limitation, features, attributes and descriptions) at any time without notice. While Batesville strives to maintain accurate product information and images both digitally and in print, (1) product changes may potentially result in the existence of outdated product information and (2) actual products delivered may contain slight design/color variations. Customers are encouraged to visit [Batesville.com](http://Batesville.com) to obtain the most current product information and specifications needed for purchase decisions.

OS9 882 D Sand-28  
217392

**\$3,550.00**



## FEATURES:

- 1 Family Choices® Personalization Features Available
- Accepts Decorative Casket Panel
- Blue Exterior Color
- Blue Painted Finish
- Constructed of Steel 20 ga.
- Light Blue Crepe Interior
- Limited Warranty
- Living Memorial® Program
- Memorial Record® System
- Suitable for Burial



Batesville reserves the right to change or update any products (including, without limitation, features, attributes and descriptions) at any time without notice. While Batesville strives to maintain accurate product information and images both digitally and in print, (1) product changes may potentially result in the existence of outdated product information and (2) actual products delivered may contain slight design/color variations. Customers are encouraged to visit [Batesville.com](http://Batesville.com) to obtain the most current product information and specifications needed for purchase decisions.

OS9 825 DH Antique Blue-28  
220682

**\$3,550.00**



## FEATURES:

- Black Exterior Color
- Black Painted Finish
- Constructed of Steel 20 ga.
- Ivory Crepe Interior
- Limited Warranty
- Living Memorial® Program
- Optional Decorative Kit Personalization
- Suitable for Burial



Batesville reserves the right to change or update any products (including, without limitation, features, attributes and descriptions) at any time without notice. While Batesville strives to maintain accurate product information and images both digitally and in print, (1) product changes may potentially result in the existence of outdated product information and (2) actual products delivered may contain slight design/color variations. Customers are encouraged to visit [Batesville.com](http://Batesville.com) to obtain the most current product information and specifications needed for purchase decisions.

CM4 8K9 Hercules Black-28  
265526

**\$3,195.00**

Non-Gasketed



## FEATURES:

- Constructed of Steel Non-Gasketed
- Limited Warranty
- Living Memorial® Program
- Moss Pink Crepe Interior
- Optional Decorative Kit Personalization
- Purple Painted Finish
- Suitable for Burial
- Violet Exterior Color



Batesville reserves the right to change or update any products (including, without limitation, features, attributes and descriptions) at any time without notice. While Batesville strives to maintain accurate product information and images both digitally and in print, (1) product changes may potentially result in the existence of outdated product information and (2) actual products delivered may contain slight design/color variations. Customers are encouraged to visit [Batesville.com](http://Batesville.com) to obtain the most current product information and specifications needed for purchase decisions.

CM3 8K9 Hercules Orchid NGS-28  
265529

**\$2,895.00**

## FEATURES:

- Accepts Decorative Casket Panel
- Brown Exterior Color
- Brown Painted Finish
- Constructed of Steel Non-Gasketed
- Ivory Crepe Interior
- Limited Warranty
- Living Memorial® Program
- Memorial Record® System
- Suitable for Burial



Batesville reserves the right to change or update any products (including, without limitation, features, attributes and descriptions) at any time without notice. While Batesville strives to maintain accurate product information and images both digitally and in print, (1) product changes may potentially result in the existence of outdated product information and (2) actual products delivered may contain slight design/color variations. Customers are encouraged to visit [Batesville.com](http://Batesville.com) to obtain the most current product information and specifications needed for purchase decisions.

Triton Brown  
100153

**\$1,995.00**



## FEATURES:

- Brown Exterior Color
- Brown Painted Finish
- Constructed of Steel Non-Gasketed
- Limited Warranty
- Living Memorial® Program
- Rosetan Crepe Interior
- Suitable for Burial



Batesville reserves the right to change or update any products (including, without limitation, features, attributes and descriptions) at any time without notice. While Batesville strives to maintain accurate product information and images both digitally and in print, (1) product changes may potentially result in the existence of outdated product information and (2) actual products delivered may contain slight design/color variations. Customers are encouraged to visit [Batesville.com](http://Batesville.com) to obtain the most current product information and specifications needed for purchase decisions.

CM1 8F2 A Apollo Copper  
221504

**\$1,695.00**

Wood



## FEATURES:

- 4 Family Choices® Personalization Features Available
- Accepts Decorative Casket Panel
- Antique Hardware
- Champagne Velvet Interior
- Collector's Cherry Stain
- Constructed of Maple Solid
- Dark Exterior Color
- Distinctive Shell Design
- Living Memorial® Program
- Maple Solid
- Memorial Record® System
- Memory Safe® Drawer
- Pre-Interment Warranty
- Red Painted Finish
- Suitable for Burial
- Time-Honored Craftsmanship



Batesville reserves the right to change or update any products (including, without limitation, features, attributes and descriptions) at any time without notice. While Batesville strives to maintain accurate product information and images both digitally and in print, (1) product changes may potentially result in the existence of outdated product information and (2) actual products delivered may contain slight design/color variations. Customers are encouraged to visit [Batesville.com](http://Batesville.com) to obtain the most current product information and specifications needed for purchase decisions.

130 Prominence-Cut Top  
244309

**\$6,550.00**



## FEATURES:

- 3 Family Choices® Personalization Features Available
- Accepts Decorative Casket Panel
- Champagne Velvet Interior
- Charpente® Interior System
- Constructed of Oak Solid
- Dark Exterior Color
- Living Memorial® Program
- Memorial Record® System
- Memory Safe® Drawer
- Oak Solid
- Pre-Interment Warranty
- Red Painted Finish
- Reversible Pillow and Overthrow
- Russet Stain
- Satin Finish
- Suitable for Burial



Batesville reserves the right to change or update any products (including, without limitation, features, attributes and descriptions) at any time without notice. While Batesville strives to maintain accurate product information and images both digitally and in print, (1) product changes may potentially result in the existence of outdated product information and (2) actual products delivered may contain slight design/color variations. Customers are encouraged to visit [Batesville.com](http://Batesville.com) to obtain the most current product information and specifications needed for purchase decisions.

521 8J3 CHD Warren Oak  
239372

**\$5,795.00**



## FEATURES:

- 4 Family Choices® Personalization Features Available
- Accepts Decorative Casket Panel
- Antique Hardware
- Brown Painted Finish
- Champagne Velvet Interior
- Constructed of Pecan Solids and Veneers
- Living Memorial® Program
- Medium Exterior Color
- Memorial Record® System
- Memory Safe® Drawer
- Pecan Solids and Veneers
- Pecan Stain
- Pre-Interment Warranty
- Reversible Pillow and Overthrow
- Satin Finish
- Suitable for Burial or Cremation
- Wood Bars



Batesville reserves the right to change or update any products (including, without limitation, features, attributes and descriptions) at any time without notice. While Batesville strives to maintain accurate product information and images both digitally and in print, (1) product changes may potentially result in the existence of outdated product information and (2) actual products delivered may contain slight design/color variations. Customers are encouraged to visit [Batesville.com](http://Batesville.com) to obtain the most current product information and specifications needed for purchase decisions.

2V1 880 HD Woodhaven Pecan Veneer  
205162

**\$4,995.00**



## FEATURES:

- Accepts Decorative Casket Panel
- Brown Painted Finish
- Champagne Velvet Interior
- Charpente® Interior System
- Chestnut Stain
- Constructed of Oak Solids and Veneers
- Dark Exterior Color
- Family Choices® Personalization LifeView Decorative Casket Panel
- Living Memorial® Program
- Memorial Record® System
- Memory Safe® Drawer
- Oak Solids and Veneers
- Pre-Interment Warranty
- Reversible Pillow and Overthrow
- Satin Finish
- Suitable for Burial
- Wood Bars



Batesville reserves the right to change or update any products (including, without limitation, features, attributes and descriptions) at any time without notice. While Batesville strives to maintain accurate product information and images both digitally and in print, (1) product changes may potentially result in the existence of outdated product information and (2) actual products delivered may contain slight design/color variations. Customers are encouraged to visit [Batesville.com](http://Batesville.com) to obtain the most current product information and specifications needed for purchase decisions.

532 8J5 CHD Brexton Oak  
242572

**\$4,650.00**



## FEATURES:

- Accepts Decorative Casket Panel
- Antique Hardware
- Autumn Oak Stain
- Brown Painted Finish
- Constructed of Oak Solids and Veneers
- Living Memorial® Program
- Medium Exterior Color
- Memorial Record® System
- Memory Safe® Drawer
- Oak Solids and Veneers
- Pre-Interment Warranty
- Rosetan Crepe Interior
- Satin Finish
- Suitable for Burial



Batesville reserves the right to change or update any products (including, without limitation, features, attributes and descriptions) at any time without notice. While Batesville strives to maintain accurate product information and images both digitally and in print, (1) product changes may potentially result in the existence of outdated product information and (2) actual products delivered may contain slight design/color variations. Customers are encouraged to visit [Batesville.com](http://Batesville.com) to obtain the most current product information and specifications needed for purchase decisions.

5VR 825 HD Courtland Oak Veneer  
189095

**\$4,595.00**



## FEATURES:

- 3 Family Choices® Personalization Features Available
- Accent Detailing
- Collector's Cherry Stain
- Constructed of Select Hardwoods and Veneers
- Dark Exterior Color
- Living Memorial® Program
- Memorial Record® System
- Memory Safe® Drawer
- Natural Eyelet Interior
- Pre-Interment Warranty
- Red Painted Finish
- Reversible Pillow and Overthrow
- Select Hardwoods and Veneers
- Suitable for Burial
- Wood Bars



Batesville reserves the right to change or update any products (including, without limitation, features, attributes and descriptions) at any time without notice. While Batesville strives to maintain accurate product information and images both digitally and in print, (1) product changes may potentially result in the existence of outdated product information and (2) actual products delivered may contain slight design/color variations. Customers are encouraged to visit [Batesville.com](http://Batesville.com) to obtain the most current product information and specifications needed for purchase decisions.

495 8J3 H Rosette  
242707

**\$4,450.00**



**FEATURES:**

- Solid Hickory
- Natural Finish
- Trimmed with Hickory Bark
- Ivory Cloth
- Ivory Pillow
- Ivory Overlay

---

Rustic Hickory (Natural)

**\$4,550**



**FEATURES:**

- Solid Hickory
- Natural Finish
- Trimmed with Hickory Bark
- Reversible Duck Cloth
- Reversible Camo Pillow
- Reversible Overlay

---

Rustic Hickory (Camo)

**\$4,550**



## FEATURES:

- 7 Family Choices® Personalization Features Available
- Accepts Decorative Casket Panel
- Brown Painted Finish
- Constructed of Oak Solid
- Living Memorial® Program
- Medium Exterior Color
- Memorial Record® System
- Oak Solid
- Oatmeal Duck Cloth Interior
- Patina Finish (Natural Weathered Wood with Sealer)
- Pre-Interment Warranty
- Rough Sawn Oak
- Satin Finish
- Suitable for Burial or Cremation



Batesville reserves the right to change or update any products (including, without limitation, features, attributes and descriptions) at any time without notice. While Batesville strives to maintain accurate product information and images both digitally and in print, (1) product changes may potentially result in the existence of outdated product information and (2) actual products delivered may contain slight design/color variations. Customers are encouraged to visit [Batesville.com](http://Batesville.com) to obtain the most current product information and specifications needed for purchase decisions.

5BN 8K0 UPH Fireside Oak  
269166

**\$4,395.00**



## FEATURES:

- 5 Family Choices® Personalization Features Available
- Accepts Decorative Casket Panel
- Constructed of Select Hardwood Solid
- Dark Exterior Color
- Distinctive Shell Design
- Ivory Linwood Interior
- Living Memorial® Program
- Memorial Record® System
- Memory Safe® Drawer
- Pre-Interment Warranty
- Red Painted Finish
- Russet Stain
- Satin Finish
- Select Hardwood Solid
- Suitable for Burial or Cremation
- Time-Honored Craftsmanship



Batesville reserves the right to change or update any products (including, without limitation, features, attributes and descriptions) at any time without notice. While Batesville strives to maintain accurate product information and images both digitally and in print, (1) product changes may potentially result in the existence of outdated product information and (2) actual products delivered may contain slight design/color variations. Customers are encouraged to visit [Batesville.com](http://Batesville.com) to obtain the most current product information and specifications needed for purchase decisions.

410 Forever Honored - Blue  
283934

**\$4,350.00**



## FEATURES:

- Constructed of Select Hardwood Solid
- Champagne Velvet Interior
- 4 Family Choices® Personalization Features Available
- Memory Safe® Drawer
- Suitable for Burial or Cremation
- Living Memorial® Program
- Time-Honored Craftsmanship
- Distinctive Shell Design
- Red Painted Finish
- Light Cherry Stain
- Medium Exterior Color
- Accepts Decorative Casket Panel
- Satin Finish
- Memorial Record® System
- Pre-Interment Warranty



Batesville reserves the right to change or update any products (including, without limitation, features, attributes and descriptions) at any time without notice. While Batesville strives to maintain accurate product information and images both digitally and in print, (1) product changes may potentially result in the existence of outdated product information and (2) actual products delivered may contain slight design/color variations. Customers are encouraged to visit [Batesville.com](http://Batesville.com) to obtain the most current product information and specifications needed for purchase decisions.

410 Syracuse-Cut Top  
275548

**\$4,095.00**



## FEATURES:

- 4 Family Choices® Personalization Features Available
- Brown Painted Finish
- Charpente® Interior System
- Constructed of Select Hardwoods and Veneers
- Khaki Linwood Interior
- Living Memorial® Program
- Medium Exterior Color
- Memorial Record® System
- Pecan Stain
- Pre-Interment Warranty
- Satin Finish
- Select Hardwoods and Veneers
- Suitable for Burial or Cremation
- Wood Embossed Bars



Batesville reserves the right to change or update any products (including, without limitation, features, attributes and descriptions) at any time without notice. While Batesville strives to maintain accurate product information and images both digitally and in print, (1) product changes may potentially result in the existence of outdated product information and (2) actual products delivered may contain slight design/color variations. Customers are encouraged to visit [Batesville.com](http://Batesville.com) to obtain the most current product information and specifications needed for purchase decisions.

495 825 CH Bailey  
263781

**\$3,850.00**



## FEATURES:

- 4 Family Choices® Personalization Features Available
- Accepts Decorative Casket Panel
- Charpente® Interior System
- Collector's Cherry Stain
- Constructed of Select Hardwoods and Veneers
- Dark Exterior Color
- Ivory Linwood Interior
- Living Memorial® Program
- Memorial Record® System
- Pre-Interment Warranty
- Red Painted Finish
- Select Hardwoods and Veneers
- Suitable for Burial or Cremation
- Wood Embossed Bars



Batesville reserves the right to change or update any products (including, without limitation, features, attributes and descriptions) at any time without notice. While Batesville strives to maintain accurate product information and images both digitally and in print, (1) product changes may potentially result in the existence of outdated product information and (2) actual products delivered may contain slight design/color variations. Customers are encouraged to visit [Batesville.com](http://Batesville.com) to obtain the most current product information and specifications needed for purchase decisions.

495 825 CH Riley  
263783

**\$3,850.00**



## FEATURES:

- Constructed of Pine Solids and Veneers
- Dark Exterior Color
- Limited Warranty
- Living Memorial® Program
- Pine Solids and Veneers
- Red Painted Finish
- Rosetan Crepe Interior
- Suitable for Burial or Cremation
- Veneer Construction
- Victorian Cherry Stain



Batesville reserves the right to change or update any products (including, without limitation, features, attributes and descriptions) at any time without notice. While Batesville strives to maintain accurate product information and images both digitally and in print, (1) product changes may potentially result in the existence of outdated product information and (2) actual products delivered may contain slight design/color variations. Customers are encouraged to visit [Batesville.com](http://Batesville.com) to obtain the most current product information and specifications needed for purchase decisions.

427 825 DH Libra Harvest Red  
246021

**\$3,550.00**

## FEATURES:

- Accepts Decorative Casket Panel
- Brown Painted Finish
- Constructed of Select Hardwood Solid
- Family Choices® Personalization LifeView Decorative Casket Panel
- Light Exterior Color
- Light Pecan Stain
- Living Memorial® Program
- Memorial Record® System
- Pre-Interment Warranty
- Rosetan Crepe Interior
- Satin Finish
- Select Hardwood Solid
- Suitable for Burial or Cremation
- Wood Bars



Batesville reserves the right to change or update any products (including, without limitation, features, attributes and descriptions) at any time without notice. While Batesville strives to maintain accurate product information and images both digitally and in print, (1) product changes may potentially result in the existence of outdated product information and (2) actual products delivered may contain slight design/color variations. Customers are encouraged to visit [Batesville.com](http://Batesville.com) to obtain the most current product information and specifications needed for purchase decisions.

4C1 8J5 UDH Delray  
146853

**\$3,150.00**

# Cremation Caskets/Containers



## FEATURES:

- 4 Family Choices® Personalization Features Available
- Accepts Decorative Casket Panel
- Charpente® Interior System
- Collector's Cherry Stain
- Constructed of Select Hardwoods and Veneers
- Dark Exterior Color
- Ivory Linwood Interior
- Living Memorial® Program
- Memorial Record® System
- Pre-Interment Warranty
- Red Painted Finish
- Select Hardwoods and Veneers
- Suitable for Burial or Cremation
- Wood Embossed Bars



Batesville reserves the right to change or update any products (including, without limitation, features, attributes and descriptions) at any time without notice. While Batesville strives to maintain accurate product information and images both digitally and in print, (1) product changes may potentially result in the existence of outdated product information and (2) actual products delivered may contain slight design/color variations. Customers are encouraged to visit [Batesville.com](http://Batesville.com) to obtain the most current product information and specifications needed for purchase decisions.

495 825 CH Riley  
263783

**\$3,850.00**

## FEATURES:

- 4 Family Choices® Personalization Features Available
- Accepts Decorative Casket Panel
- Brown Painted Finish
- Constructed of Select Hardwoods and Veneers
- Dark Exterior Color
- Living Memorial® Program
- Memorial Record® System
- Memory Safe® Drawer
- Montgomery Walnut Stain
- Pre-Interment Warranty
- Rosetan Crepe Interior
- Select Hardwoods and Veneers
- Suitable for Burial or Cremation
- Wood Bars



Batesville reserves the right to change or update any products (including, without limitation, features, attributes and descriptions) at any time without notice. While Batesville strives to maintain accurate product information and images both digitally and in print, (1) product changes may potentially result in the existence of outdated product information and (2) actual products delivered may contain slight design/color variations. Customers are encouraged to visit [Batesville.com](http://Batesville.com) to obtain the most current product information and specifications needed for purchase decisions.

4V4 825 HD Montgomery  
249223

**\$3,350.00**

## FEATURES:

- Accepts Decorative Casket Panel
- Brown Painted Finish
- Constructed of Select Hardwood Solid
- Family Choices® Personalization LifeView Decorative Casket Panel
- Light Exterior Color
- Light Pecan Stain
- Living Memorial® Program
- Memorial Record® System
- Pre-Interment Warranty
- Rosetan Crepe Interior
- Satin Finish
- Select Hardwood Solid
- Suitable for Burial or Cremation
- Wood Bars



Batesville reserves the right to change or update any products (including, without limitation, features, attributes and descriptions) at any time without notice. While Batesville strives to maintain accurate product information and images both digitally and in print, (1) product changes may potentially result in the existence of outdated product information and (2) actual products delivered may contain slight design/color variations. Customers are encouraged to visit [Batesville.com](http://Batesville.com) to obtain the most current product information and specifications needed for purchase decisions.

4C1 8J5 UDH Delray  
146853

**\$3,150.00**

## FEATURES:

- 4 Family Choices® Personalization Features Available
- Accepts Decorative Casket Panel
- Charpente® Interior System
- Constructed of Select Hardwoods and Veneers
- Living Memorial® Program
- Medium Exterior Color
- Memorial Record® System
- Pre-Interment Warranty
- Red Painted Finish
- Rosetan Crepe Interior
- Satin Finish
- Select Hardwoods and Veneers
- Suitable for Burial or Cremation
- Victorian Cherry Stain



Batesville reserves the right to change or update any products (including, without limitation, features, attributes and descriptions) at any time without notice. While Batesville strives to maintain accurate product information and images both digitally and in print, (1) product changes may potentially result in the existence of outdated product information and (2) actual products delivered may contain slight design/color variations. Customers are encouraged to visit [Batesville.com](http://Batesville.com) to obtain the most current product information and specifications needed for purchase decisions.

4C1 882 CDH Dryden  
274158

**\$3,150.00**



## FEATURES:

- 1 Family Choices® Personalization Features Available
- Accepts Decorative Casket Panel
- Constructed of Select Hardwood Solid
- Cremation Friendly Perforated Metal LifeStories Panel
- Dark Exterior Color
- Family Choices® Personalization LifeView Decorative Casket Panel
- Living Memorial® Program
- Memorial Record® System
- Pre-Interment Warranty
- Red Painted Finish
- Rosetan Crepe Interior
- Satin Finish
- Select Hardwood Solid
- Suitable for Burial or Cremation
- Victorian Cherry Stain



Batesville reserves the right to change or update any products (including, without limitation, features, attributes and descriptions) at any time without notice. While Batesville strives to maintain accurate product information and images both digitally and in print, (1) product changes may potentially result in the existence of outdated product information and (2) actual products delivered may contain slight design/color variations. Customers are encouraged to visit [Batesville.com](http://Batesville.com) to obtain the most current product information and specifications needed for purchase decisions.

41X 8Q3 UHD Clifton  
263630

**\$2,495.00**

## FEATURES:

- Constructed of Cloth Covered Fiberboard
- Grey Exterior
- Grey Exterior Color
- Ivory Crepe Interior
- Living Memorial® Program
- Memorial Record® System
- Suitable for Burial or Cremation



Batesville reserves the right to change or update any products (including, without limitation, features, attributes and descriptions) at any time without notice. While Batesville strives to maintain accurate product information and images both digitally and in print, (1) product changes may potentially result in the existence of outdated product information and (2) actual products delivered may contain slight design/color variations. Customers are encouraged to visit [Batesville.com](http://Batesville.com) to obtain the most current product information and specifications needed for purchase decisions.

Grey Doeskin Oval Cut Top  
147970

**\$1,750.00**



## FEATURES:

- Constructed of Pine Solids and Veneers
- Light Exterior Color
- Limited Warranty
- Living Memorial® Program
- Natural Painted Finish
- Pine Solids and Veneers
- Rosetan Crepe Interior
- Satin Finish
- Suitable for Burial or Cremation
- Veneer Construction



Batesville reserves the right to change or update any products (including, without limitation, features, attributes and descriptions) at any time without notice. While Batesville strives to maintain accurate product information and images both digitally and in print, (1) product changes may potentially result in the existence of outdated product information and (2) actual products delivered may contain slight design/color variations. Customers are encouraged to visit [Batesville.com](http://Batesville.com) to obtain the most current product information and specifications needed for purchase decisions.

847 D Lyra Natural  
269150

**\$1,750.00**



## FEATURES:

- Accepts Decorative Casket Panel
- Champagne Velvet Interior
- Cherry Solid
- Constructed of Cherry Solid
- Dark Exterior Color
- Designed Specifically for Cremation
- Living Memorial® Program



Batesville reserves the right to change or update any products (including, without limitation, features, attributes and descriptions) at any time without notice. While Batesville strives to maintain accurate product information and images both digitally and in print, (1) product changes may potentially result in the existence of outdated product information and (2) actual products delivered may contain slight design/color variations. Customers are encouraged to visit [Batesville.com](http://Batesville.com) to obtain the most current product information and specifications needed for purchase decisions.

7PM 888 H Beckham 27 Rental  
246589

**\$1,295.00**



## FEATURES:

- Constructed of Wood Composite (MDF)
- Designed Specifically for Cremation
- Ivory Crepe Interior
- Limited Warranty
- Living Memorial® Program
- Medium Exterior Color
- Printed Woodgrain Finish Exterior



Batesville reserves the right to change or update any products (including, without limitation, features, attributes and descriptions) at any time without notice. While Batesville strives to maintain accurate product information and images both digitally and in print, (1) product changes may potentially result in the existence of outdated product information and (2) actual products delivered may contain slight design/color variations. Customers are encouraged to visit [Batesville.com](http://Batesville.com) to obtain the most current product information and specifications needed for purchase decisions.

Hadley Cremation Container  
279185

**\$1,075.00**



## FEATURES:

- Constructed of Wood Composite (MDF)
- Designed Specifically for Cremation
- Ivory Crepe Interior
- Light Exterior Color
- Limited Warranty
- Living Memorial® Program
- Printed Woodgrain Finish Exterior



Batesville reserves the right to change or update any products (including, without limitation, features, attributes and descriptions) at any time without notice. While Batesville strives to maintain accurate product information and images both digitally and in print, (1) product changes may potentially result in the existence of outdated product information and (2) actual products delivered may contain slight design/color variations. Customers are encouraged to visit [Batesville.com](http://Batesville.com) to obtain the most current product information and specifications needed for purchase decisions.

Novato Cremation Container  
279183

**\$875.00**



## FEATURES:

- Brown Exterior Color
- Constructed of Wood Composite (MDF)
- Designed Specifically for Cremation
- Fabric Interior Not Included Interior
- Living Memorial® Program
- Printed Woodgrain Finish Exterior
- Sold in packs of 3



Batesville reserves the right to change or update any products (including, without limitation, features, attributes and descriptions) at any time without notice. While Batesville strives to maintain accurate product information and images both digitally and in print, (1) product changes may potentially result in the existence of outdated product information and (2) actual products delivered may contain slight design/color variations. Customers are encouraged to visit [Batesville.com](http://Batesville.com) to obtain the most current product information and specifications needed for purchase decisions.

The Standard Alternative Cont. Order in Qty of 3 or 6 Pieces  
145232

**\$495.00**

## FEATURES:

- Brown Exterior
- Brown Exterior Color
- Constructed of Cardboard
- Designed Specifically for Cremation
- Fabric Interior Not Included Interior
- Living Memorial® Program
- Sold in packs of 4



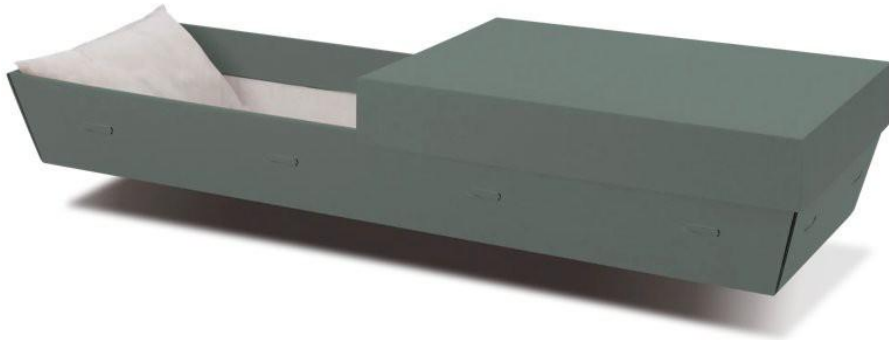
Batesville reserves the right to change or update any products (including, without limitation, features, attributes and descriptions) at any time without notice. While Batesville strives to maintain accurate product information and images both digitally and in print, (1) product changes may potentially result in the existence of outdated product information and (2) actual products delivered may contain slight design/color variations. Customers are encouraged to visit [Batesville.com](http://Batesville.com) to obtain the most current product information and specifications needed for purchase decisions.

Trayview® Alternative Container Order in Quantity of 4 Pieces  
242414

**\$255.00**

## FEATURES:

- Constructed of Cardboard
- Designed Specifically for Cremation
- Fabric Interior Not Included Interior
- Green Exterior
- Green Exterior Color
- Living Memorial® Program
- Sold in packs of 5



Batesville reserves the right to change or update any products (including, without limitation, features, attributes and descriptions) at any time without notice. While Batesville strives to maintain accurate product information and images both digitally and in print, (1) product changes may potentially result in the existence of outdated product information and (2) actual products delivered may contain slight design/color variations. Customers are encouraged to visit [Batesville.com](http://Batesville.com) to obtain the most current product information and specifications needed for purchase decisions.

Baden Alternative Container Order in Quantity of 5 Pieces  
252321

**\$255.00**