



# 2025 National Landcare Conference

Landcare: Nature, Agriculture, Land and People Positive

**Sunday 21 to Wednesday 24** September, 2025

**Gold Coast Convention and Exhibition Centre**

PROUDLY SPONSORED BY



CITY OF  
**GOLDCOAST**™



THANK YOU TO OUR STREAM SPONSOR

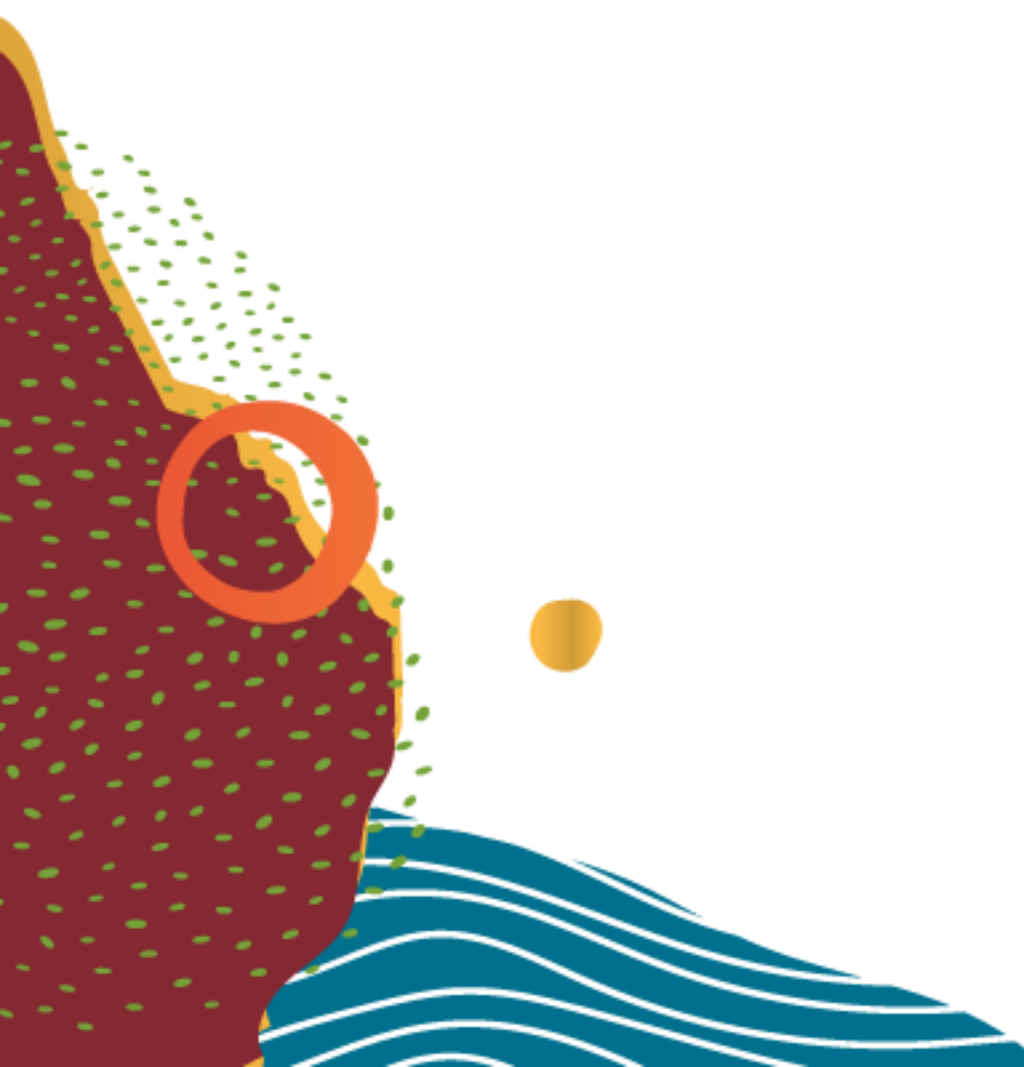


# Southern Queensland Landscapes: Resilient Landscapes

Natural Resource Recovery Program (NRRP) - A  
Holistic Approach to Restoring Landscapes

Presented by Dr. Payel Sinha

**This project is funded by the Queensland  
Government's Natural Resources Recovery  
Program**





# Acknowledgement of country

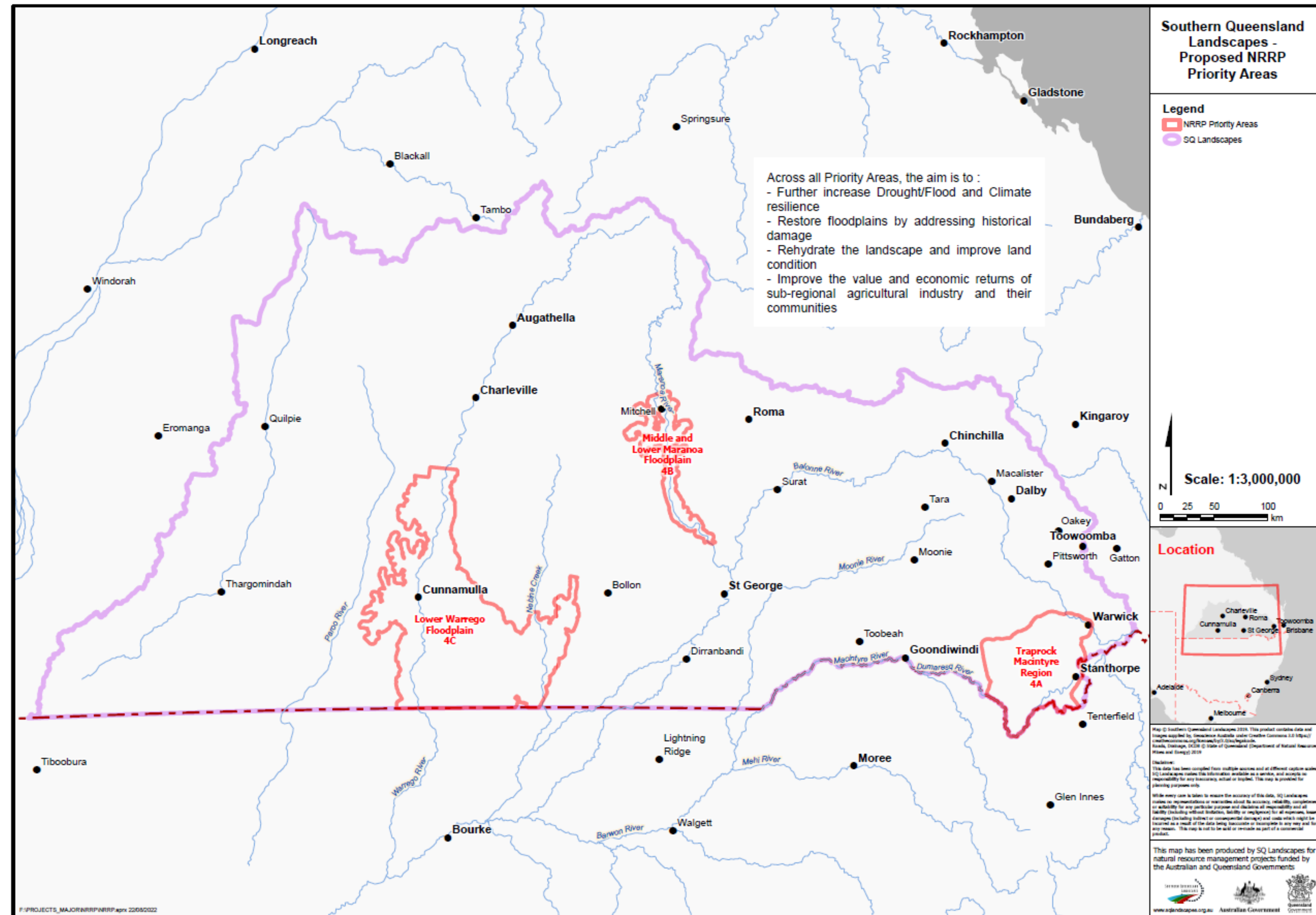
We acknowledge, respect and learn from the First Peoples of the 28 Nations in the Southern Queensland Landscapes area and further afield. We pay our respects to the Elders, past, present and future, for they hold the memories, traditions, culture, science, knowledge and hopes of Aboriginal and Torres Strait Island Peoples across our nation.



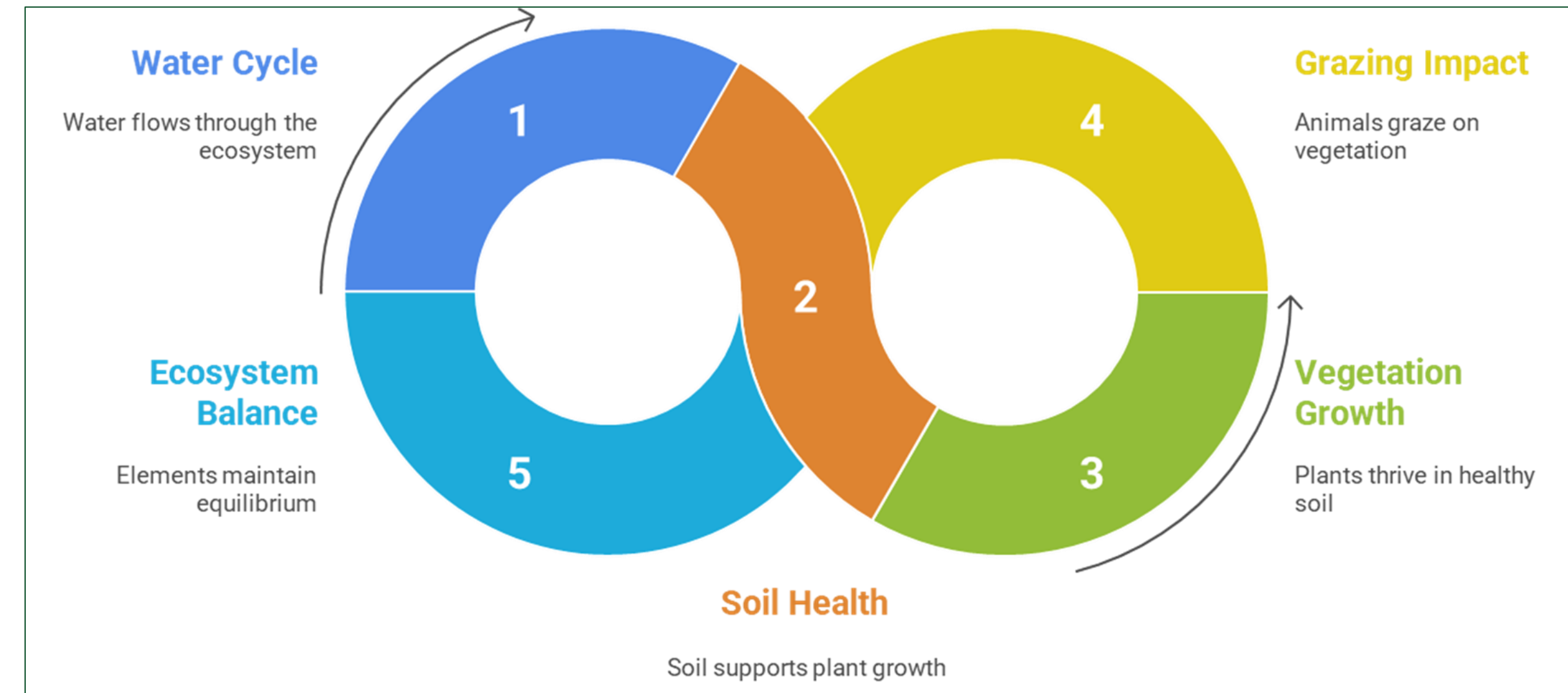
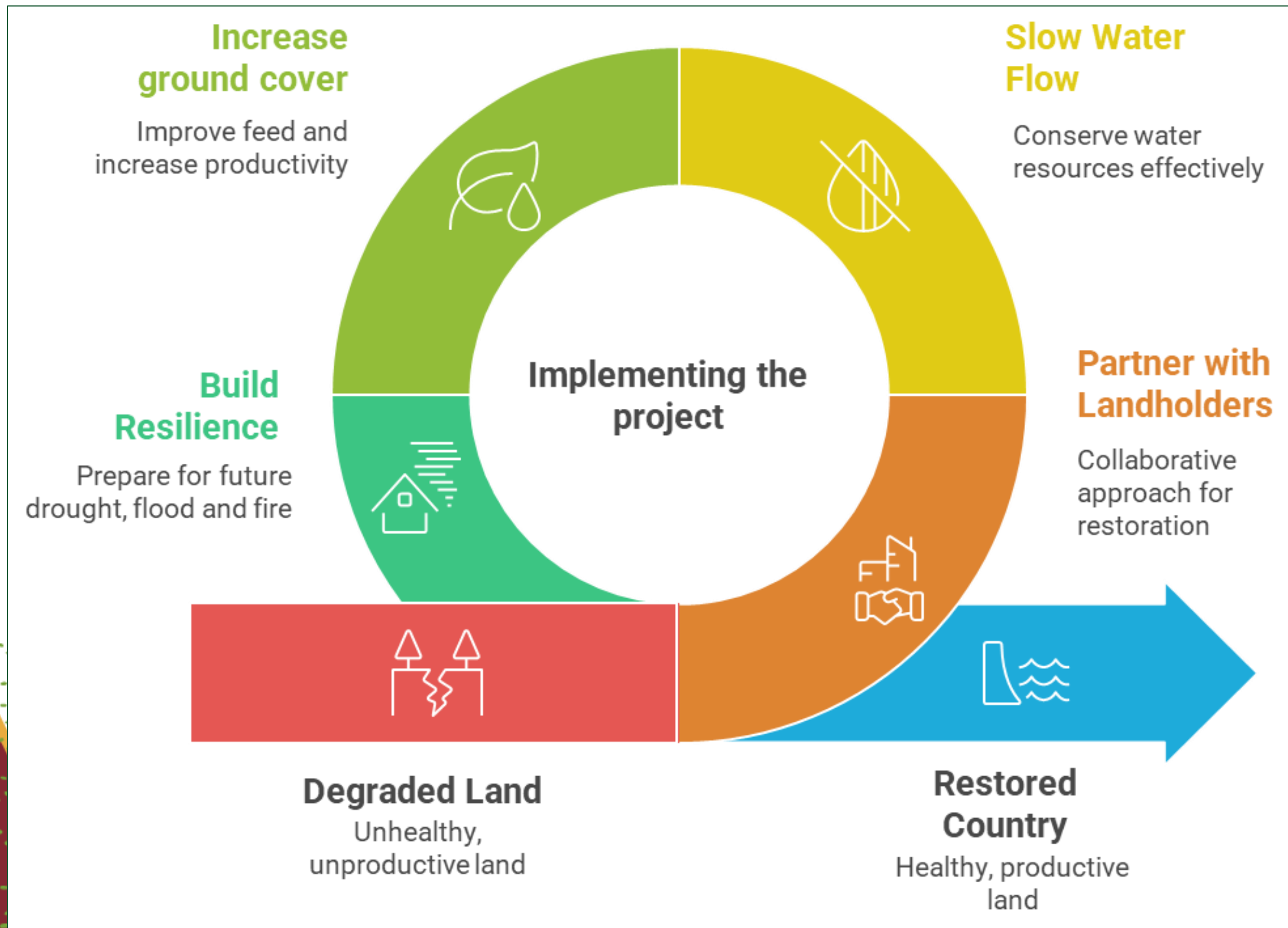


# Project overview

- Lead and scope: Southern Queensland Landscapes; **\$2,144,551; Jan 2023 – June 2024**
- Partners: **36 land managers** implementing on-ground works; partnerships with **AgForce** and **SQNNSW Drought Hub**; **6 First Nations groups engaged** (Gunggari, Kooma, Githabul, Kunja, plus Bidjara, Mardigan).



# Project Interventions: Holistic Approach



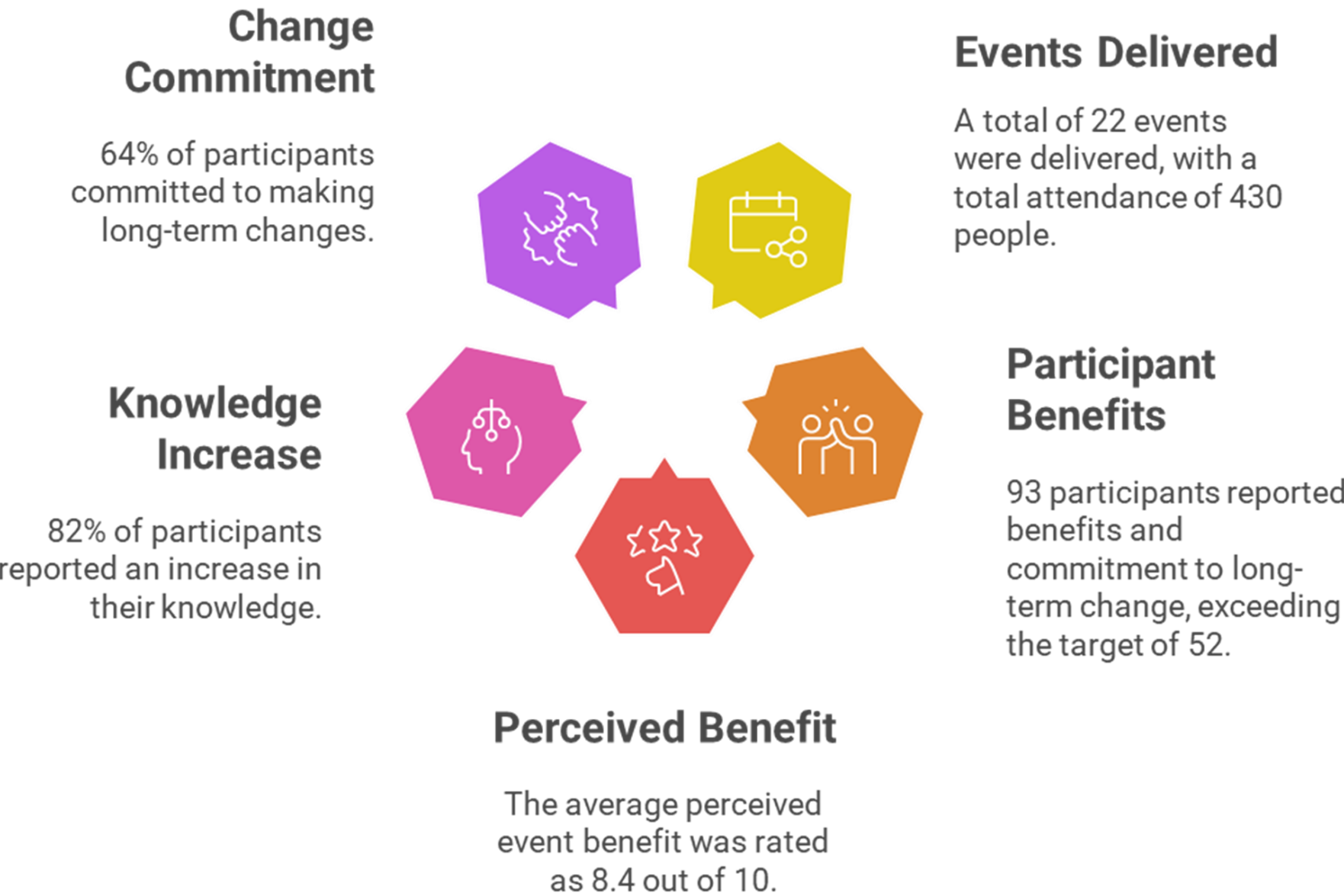
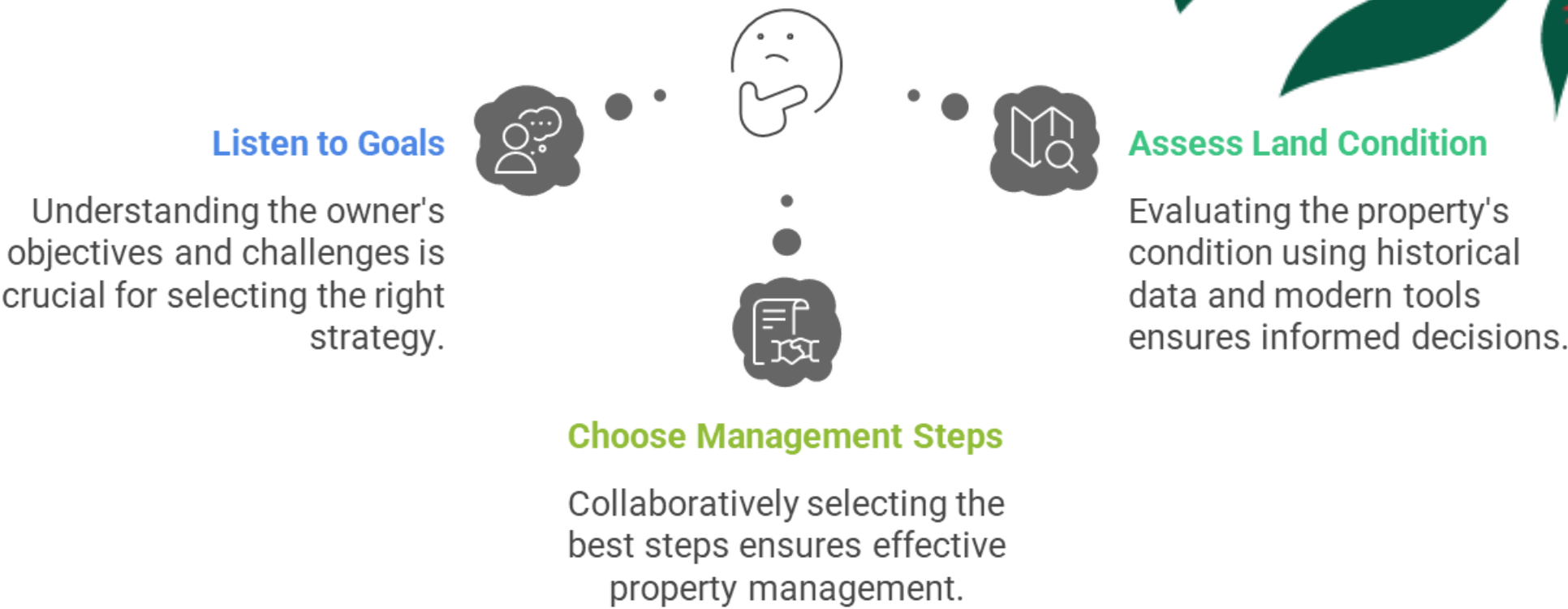


# Project Engagement and Design



SQL staff on landholders' property for initial assessment

What land management strategy should be chosen for the property?



SQL staff, Uncle Tom, Uncle John, Professor Kerrie Wilson at SQL office



# Achieving Sustainable Land Management Outcomes



Metric	Value	Description
Improved Land Condition	66,359 ha	Area with better LCAT measurement
Improved Practices	165,417 ha	Area under sustainable land management methods
Land Managers Implementing	36	Number of managers involved
Event Attendees	430	People participating in events
Landholder Co-Investment	\$1.23M	Investment from landholders
First Nations Engaged	6	Engaged with Cool Burning and Knowledge Sharing



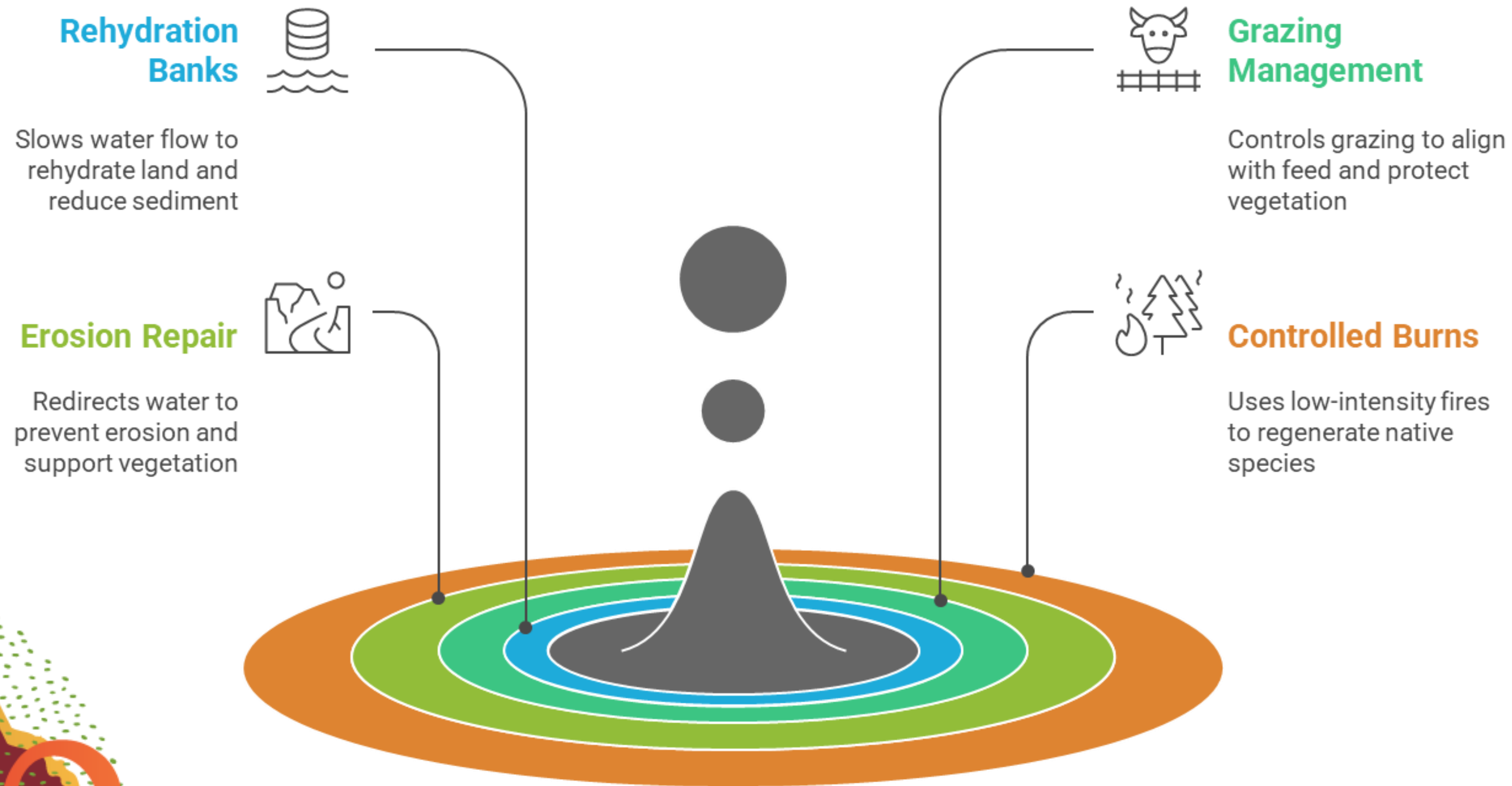


# Building Stronger Community Bonds





# On ground Works





# Project Site photos

## Mitchell Priority Area - Ashmount

Earthworks to address erosion, and bare ground issues were installed at a number of sites on the property to slow and spread damaging overland flows. There has been a significant response to these works following recent rain and the recovery process is clearly evident.

### Before



Bare ground site with high runoff area, time of installation of earthworks, 2023.

### After



Response following rain, the impact of slowing the runoff is evident on both sides of the spreader bank. Stock was managed in this area to allow establishment and double seeding by the grasses to ensure resilience, 2024.



# Project Site photos

## Warrego Priority Area – Waihora/Overshot near Cunnamulla

Thousands of hectares of land is unusable due to the loss of ground cover and soil and the lack of infiltration due to the excessive runoff and the number of abandoned bore drains still draining the country.

### Before



A typical scald where the topsoil is removed and needs to be rebuilt.

### After



Previously, the land manager could access throughout the property after rain as the water ran off very quickly. Now water runs more slowly soaking in and the land manager needs to access his property from the air.



# Project Site photos

## Mitchell Priority Area – Drysdale Ponds

This property is addressing bare ground and uncontrolled grazing through changing grazing practices by fencing to create 10 paddocks where there were initially just two. This will allow rotational grazing, spelling of paddocks for extended periods and overall improvement in soil health and groundcover through increased waters coverage.



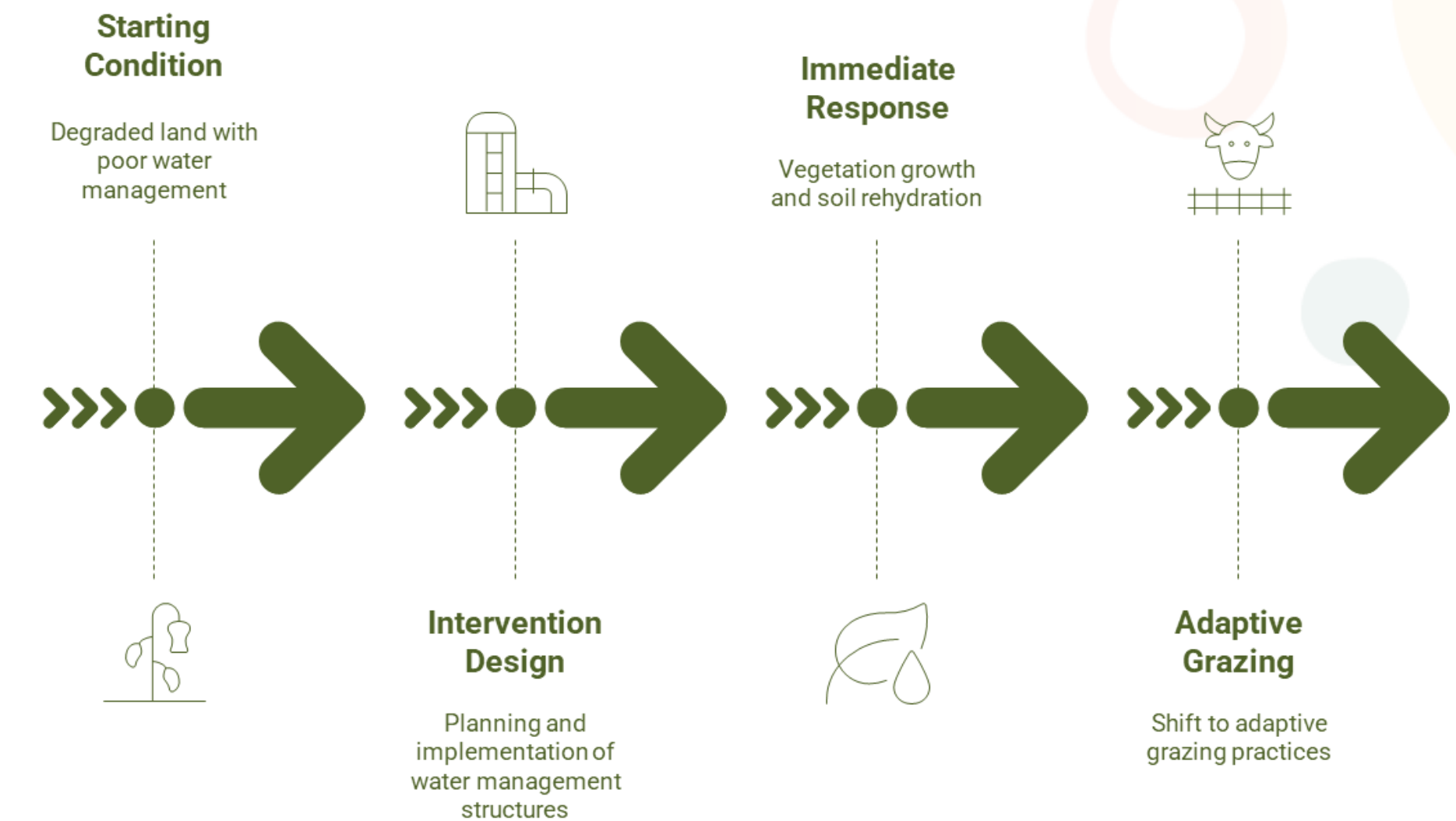


# Case study: From Bare Scalds to Rain-Ready Country

- **Starting condition**  
80,000 ha *across* Waihora and Overshot, Eulo Queensland, with hard, bare ground, low infiltration, and decommissioned bore drains rapidly exporting incident rainfall, limiting germination and feedbase recovery.
- **Intervention (2020–2025)**  
Contour-aligned earth, rock, and timber banks designed with topo mapping and laser level to slow, spread, and sink water; paired with strategic fencing to enable rest-rotation and responsive stocking.
- **Immediate response**  
Vegetation returned on decades-bare floodplains, soils re-hydrated and swelled like a “sponge,” and feed availability improved, enabling a shift from set-stocking to adaptive grazing with productivity benefits.

“ We had the vision of converting every drop of rainfall into actively growing plants, but technical expertise from Southern Queensland Landscapes ensured it was planned and implemented in a cost effective manner. ”

– Ross Campbell





# Team Acknowledgment

Payel Sinha, PhD  
Project Lead | Southern Queensland  
Landscapes

266 Margaret Street, Toowoomba  
Qld 4350

[payel.sinha@sqlandscapes.org.au](mailto:payel.sinha@sqlandscapes.org.au)







# Thank you

PROUDLY SPONSORED BY



CITY OF  
**GOLDCOAST**



THANK YOU TO OUR STREAM SPONSOR

