



# PARENT HANDBOOK

2025-2026





# Table of Contents

<b>Welcome to The NEW School</b>	<b>01</b>
<b>Letter from Founder, Angela Sena</b>	<b>02</b>
<b>NEW Earth Wonders School Mission and Vision</b>	<b>03</b>
<b>The Four Pillars: The Heart of NEW Earth Wonders School</b>	<b>04</b>
<b>The NEW School Educational Philosophy</b>	<b>05</b>
<b>General Information</b>	<b>06</b>
<b>Academic Program &amp; (IB) Program School</b>	<b>07 - 08</b>
<b>Daily and Yearly Routines and School Calendar</b>	<b>09 - 10</b>
<b>Health and Safety Policies &amp; Code of Conduct</b>	<b>11</b>
<b>Family &amp; School Engagement Guidelines</b>	<b>12</b>
<b>Communication Protocols</b>	<b>13</b>
<b>Enrichment Programs and Extra Curricular Activities</b>	<b>14</b>
<b>Our Application Process and Tuition</b>	<b>15</b>
<b>Attendance Policy</b>	<b>16</b>
<b>Safety Policies</b>	<b>17</b>
<b>Frequently Asked Questions</b>	<b>18</b>
<b>The NEW School Charity</b>	<b>19</b>
<b>Closing Message from Angela Sena, Founder and School Visionary and Head</b>	<b>20</b>
<b>Parent Handbook Acknowledgment &amp; Agreement</b>	<b>21</b>
<b>Appendix A - Registration Form</b>	<b>22-36</b>
<b>Appendix B - Referral Incentive Program</b>	
<b>Appendix C - Charitable Donation Form</b>	



## Welcome to The NEW School...

---

The NEW paradigm to education.  
The NEW legacy of learning.  
The NEW path to creative living.  
The NEW school where children thrive.

Doing it the NEW Earth Wonders School Way!

And we are so honoured and excited to welcome YOU.

The NEW School is founded on Four Foundational Pillars that shape our approach to education, community, and spiritual development:

### **Rooted in Balance**

The NEW School believes in nurturing the whole child through a balanced approach to learning. By integrating academics, play, exploration, and physical exercise, we create an environment where students can thrive, discover their unique strengths, and develop a lifelong love for learning.

### **Experience Sustainability**

Committed to fostering a sense of stewardship for God's creation, the NEW School prioritizes sustainability in every aspect of our school life. We strive to be a healthy and toxin free space emphasizing organic and wholesome eating to nourish both body and spirit, while teaching students the importance of living in harmony with the Earth.

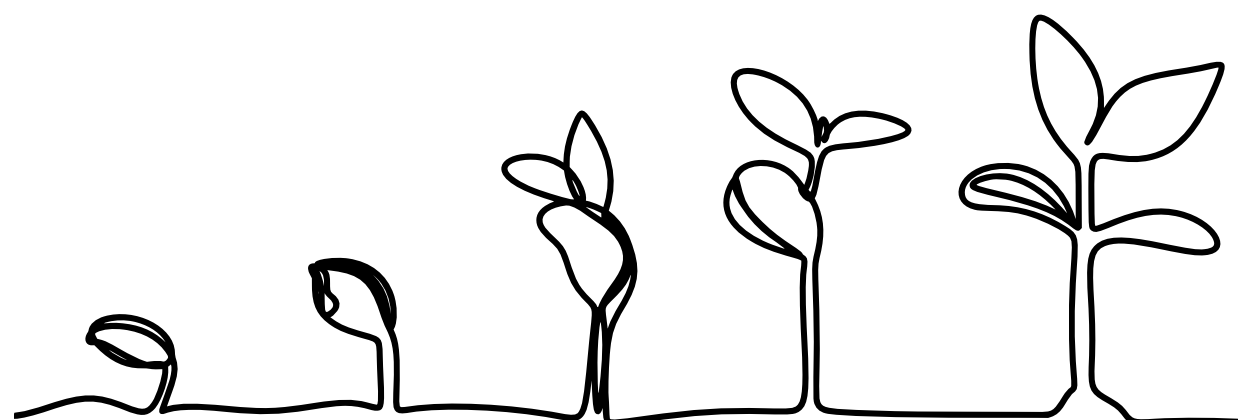
### **Growth Mindset**

The NEW School educators are dedicated to cultivating a growth mindset, inspiring students to embrace challenges, learn from setbacks, and continually strive for personal and academic excellence. By fostering these qualities, we prepare our students to become compassionate global leaders and contributors who seek to make a positive impact in the world.

### **Christ-Centered Living**

At the heart of our school is a Christ-centered philosophy, rooted in truth and way-finding through the teachings of Jesus. Guided by the fruits of the Spirit—love, joy, peace, patience, kindness, goodness, faithfulness, gentleness, and self-control—we aim to instill in our students a sense of purpose and a commitment to walk in God's light.

These pillars guide our mission to create a nurturing, inspiring, and spiritually enriching community that equips students to lead lives of character, love, and service.



*Welcome to our community of trailblazers, forging a new movement in education  
and a way of living that feels inspired, creative, and rooted in truth!*



Dear Parent,

Before we go any further, I want to share my gratitude for \*you\* right now! You are THE reason and inspiration for The NEW School, and it's because of families like yours that I have endless passion and zeal for creating a school that will not only transform your child's learning in creative and wondrous ways but is also igniting a movement in education as we know it! And YOU are a part of that. My heart is full of admiration and awe at your courage and love for your child as you entrust him or her to us and begin together on a journey through academic, spiritual, and creative development.

The vision of The NEW School began in my heart long before its doors opened. As a mother and educator, I saw firsthand how traditional systems of education often failed to nurture the whole child—mind, body, and spirit. I felt deeply that learning should be experiential, relevant, and full of joy, grounded in something much greater than academic success alone. During the pandemic, this calling became undeniable. The mandates and restrictions made me realize I couldn't simply go along with the status quo any longer. I wanted something better for my children and for yours—a Christ-centered, holistic approach to learning, where the truth, love, and goodness of God would be woven into every aspect of education. That vision is what inspired the creation of The NEW School: a place where children can thrive academically, spiritually, and creatively, free from the limitations and pressures of a system that felt increasingly distant from the values I held dear.

The purpose of this handbook is to provide you with all the essential information about our NEW School community, programs, and policies. Whether you are new to The NEW School or a returning family, I hope this guide answers your questions and helps you navigate what our school has to offer.

As a community, we work together to ensure the best experiences and opportunities for your children. While this handbook is a comprehensive starting point, we encourage you to connect with other parents, visit our website at New Earth Wonders School, follow us on Facebook and Instagram, or come by the school for a visit. We would be delighted to show you around, discuss our programs, and address any questions you may have.

You've taken a bold step in choosing a different path for your child's education, and I am so excited for what's to come! In these extraordinary times, you're giving your child an extraordinary holistic learning experience. I can't wait to see them flourish here, where they will grow academically, spiritually, and creatively. Here's to a bright journey ahead!

With gratitude and excitement,

*Angela Anna Maria Sena*

Angela  
Founder & Visionary Director, The NEW School



# NEW Earth Wonders School Mission and Vision

---

## Mission Statement:

At The NEW School, we are committed to nurturing the whole child through a Christ-centered, holistic approach to education. By integrating academics, outdoor play, exploration, and physical activity, we foster a love for truth and a connection to God's purpose. Rooted in stewardship, sustainability, and personal growth, we aim to cultivate compassionate, self-starting leaders who understand their divine calling and champion freedom in all aspects of life.

## Vision Statement:

Our vision is to create a thriving international community where students grow in balance—academically, emotionally, socially, physically, and spiritually. By embracing Christ-centered living, fostering a growth mindset, and instilling a deep respect for God's creation, we envision a future where our students lead with integrity, purpose, and compassion, making a positive impact on the world around them.

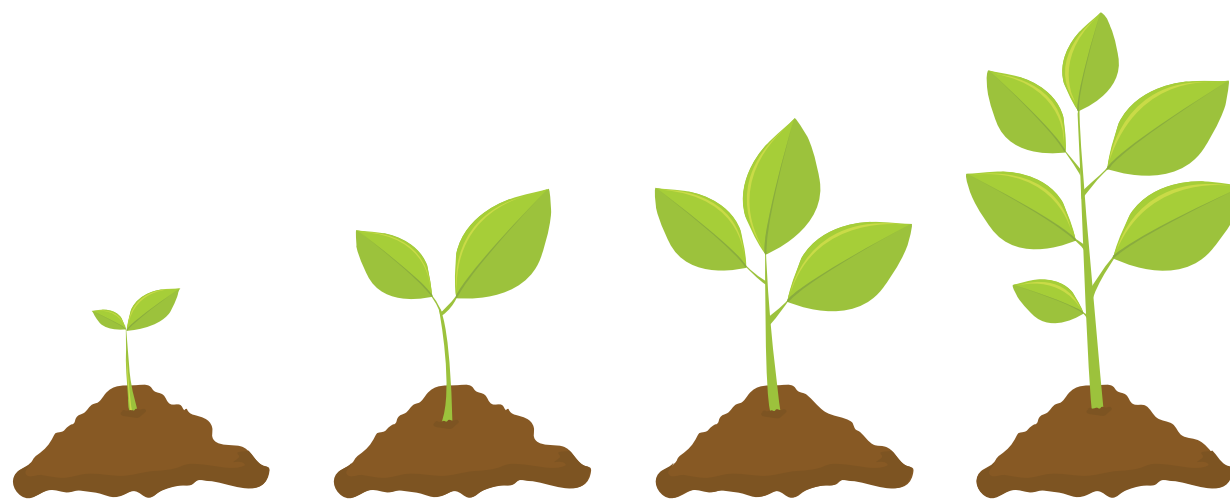




## The Four Pillars: The Heart of NEW Earth Wonders School

At The New School, our four pillars are more than just values—they are the guiding principles that shape every aspect of our community and curriculum. These pillars—Rooted in Balance, Experience Sustainability, Growth Mindset, and Christ-Centered—form the foundation of our approach to education. They inspire us to nurture each child's whole being, to connect deeply with nature, to cultivate resilience and curiosity, and to lead with love and purpose.

Each pillar reflects our commitment to fostering a vibrant learning environment where students thrive academically, emotionally, and spiritually. Together, they create a holistic framework that empowers students to grow with integrity, compassion, and a sense of wonder. These core values are the heart of everything we do, guiding us to prepare students not just for success, but for a life of meaning and joy.



### Rooted in Balance

#### Holistic Development:

Emphasizing social, academic, emotional, physical, and spiritual growth.

#### Continuum Between Home and School:

Fostering a seamless connection between home life and education.

#### Emotional Intelligence Education:

Recognizing the importance of EQ over IQ for success.

### Experience Sustainability

#### Nature-Based Learning:

Utilizing the school's location along the Humber River for direct access to forests and wildlife.

#### Environmental Consciousness:

Emphasizing organic, natural, and unprocessed foods, and minimizing exposure to chemicals.

#### Real-World Skills:

Teaching practical skills and arts to nurture the soul and connect with purpose.

### Growth Mindset

#### Critical Thinking and Problem-Solving:

Encouraging students to develop these essential skills.

#### Outside-the-Box Teaching:

Making learning relevant and bringing education to life.

#### Financial Literacy and Entrepreneurship:

Providing pathways from the beginning of their educational journey.

### Christ-Centered

#### Faith Integration:

Incorporating Christian values into the curriculum.

#### Grace and Spiritual Development:

Strengthening these aspects through education.

#### Purposeful Acts of Service:

Engaging students in community service to build a strong moral compass.



## The NEW School Educational Philosophy

The NEW School is dedicated to nurturing the whole child, offering a well-rounded and balanced curriculum that goes beyond academics. Our philosophy centers on the belief that true education develops not only intellectual abilities but also emotional intelligence, physical wellness, spiritual depth, and a deep respect for nature. Set along the Humber River's lush green landscape, our students learn in an environment that values organic, natural living, environmental sustainability, and minimized exposure to pollutants.

At the heart of our curriculum are the core values inspired by the fruits of the Holy Spirit, guiding students to grow with grace, integrity, and purpose. We emphasize both academic rigor and essential life skills, preparing students to be future leaders and compassionate global citizens. Through our unique real-world experiences and hands-on workshops, students venture into the world to learn practical skills, develop financial literacy, and cultivate entrepreneurial thinking from an early age.

Our approach is holistic and inclusive: we balance structured learning with outdoor exploration, play, creativity, and reflective practices. By focusing on emotional intelligence and fostering high EQ (emotional quotient), we empower students to understand and manage their emotions and build meaningful connections. This foundation enables them to lead with empathy, resilience, and purpose.

The NEW School's educational philosophy inspires each student to flourish academically, emotionally, and spiritually, fostering a generation that values both achievement and the joy of lifelong learning.





# General Information

---

**Contact Information Main Office:** 59 Kingdom Street, Etobicoke, ON, M9P 1W4

**Website:** [www.newearthwonderschool.com](http://www.newearthwonderschool.com)

**Email:** [newearthwonders@gmail.com](mailto:newearthwonders@gmail.com)

**Phone:** 647-525-1789

**Social Media:** @newearthwonderschool

## School Hours:

The school day begins with drop-off between 8:45 and 9:00 AM and ends with pick-up at 3:30 PM. Doors open for drop-off starting at 8:45 AM and will close by 9:05 AM. If students arrive after 9:05, they must wait until 9:30 for outdoor transition time. It is imperative parents ensure children are part of the morning breathwork as this is a critical and sacred part of our day, setting children up for a calm and intentional day of discovery and learning. If parents are not at school prior to 9:30am for outdoor transition **the only other time** to be able to drop the children off will be strictly during the lunch block between 11:45-12:15pm.

Appointments/ pick up's during school hour: We ask that you do your best to schedule any medical or other appointments for your children outside the school hours. The teachers are very hands-on and busy with the groups and will not always be readily available to answer phones or escort children out. If midday pickups cannot be avoided, we ask that they are done during the lunch hour and then the child is kept home for the remainder of the day.

## After-School Programs

Art classes are available on Tuesdays and Thursdays from 3:30 PM to 4:30 PM throughout the school year. Music lessons will be offered on Mondays from 3:30 PM to 4:30 PM, and in weekly blocks. STEM Club will be offered on Wednesdays from 3:30 PM to 4:30 PM in weekly blocks. These programs are designed to enrich students' learning experiences and encourage creativity, exploration, and skill development beyond the standard curriculum.

\*\*\*Note these programs incur an additional fee paid directly to the facilitator of each program. If your child is not attending one of these after school programs they must be picked up at 3:30pm.

## Location and Facilities

The NEW School is located at 59 Kingdom Street, Etobicoke, ON, M9P1W4 offering a serene and inspiring environment for learning. Our facilities are designed to reflect our commitment to nature-based education, featuring dedicated indoor and outdoor learning spaces. Students spend 2 ½ hours daily in nature, exploring our wooded areas, recreational facilities, and outdoor forest and trails. These unique facilities support hands-on, experiential learning and foster a deep connection to the natural world.



# Academic Program

---

## Curriculum Overview

The NEW School's academic program is designed to cultivate a love of learning through a dynamic and holistic curriculum. The core curriculum emphasizes foundational skills in literacy, numeracy, science, and social studies, integrated with enrichment programs that include music, art, french, theater and physical education. Students also participate in sustainability-focused activities and hands-on projects that foster creativity, critical thinking, and collaboration.

## Learning Approaches

Our educational philosophy is rooted in experiential and balanced learning. This includes:

- **Hands-On Experiences:** Students engage in project-based learning, experiments, and creative tasks that bring lessons to life.
- **Outdoor/Nature-Based Education:** With three hours of daily outdoor time, students explore nature, develop environmental awareness, and cultivate physical and mental well-being.
- **Individualized Learning:** Teachers tailor instruction to meet each child's unique needs and learning styles, ensuring every student thrives.

## Specialized Learning Tools

The NEW School is equipped with specialized STEM equipment that ensures students have access to innovative and cutting-edge tools that enhance their learning in science, technology, engineering, and math. Additionally, a full computer lab is available to grade 4+ students for keyboarding and computer familiarization, providing an essential foundation for digital literacy.

## Outdoor/Nature-Based Education

With three hours of daily outdoor time, students explore nature, develop environmental awareness, and cultivate physical and mental well-being. In the spring, The NEW School will be creating an outdoor garden in the back southwest corner of the school parking lot, offering students hands-on experience with gardening, sustainability, and nature.

## Christ-Centered Education

The NEW School's Christ-centered approach is integral to all aspects of the academic program. Values such as love, joy, peace, patience, kindness, and self-control are interwoven into daily lessons and interactions. Through scripture-based discussions, service projects, and character-building activities, students learn to live with purpose, integrity, and compassion. Jesus' life and teachings serve as the foundation for nurturing moral and spiritual growth.

## Growth Mindset in Practice

Fostering a growth mindset is a cornerstone of The NEW School's philosophy. Students are encouraged to:

- Embrace challenges as opportunities for growth.
- Learn from mistakes and setbacks, understanding that effort leads to improvement.
- Develop resilience and perseverance through guided support and encouragement.
- Take ownership of their learning by setting goals and reflecting on progress.

This approach empowers students to develop confidence, adaptability, and a lifelong love for learning.



# International Baccalaureate (IB) Program School

## Our Journey to Becoming an IB World School

### A Vision-Aligned Expansion through the IB Middle Years Programme (MYP)

The NEW School is proud to announce that we are currently a **candidate school** for the International Baccalaureate (IB) **Middle Years Programme (MYP)**. This marks a significant step forward in deepening our commitment to holistic, Christ-centered education that prepares students to become compassionate, globally-minded leaders.

The MYP is designed for students aged 11–16 (grades 6-10) and emphasizes intellectual challenge, encouraging students to make connections between their studies and the real world. As an inquiry-based framework, the MYP perfectly complements The NEW School's pillars of **Rooted in Balance, Experience Sustainability, Growth Mindset, and Christ-Centered Education**.

The International Baccalaureate is a **globally recognized certificate program**, and we are excited to share that we will be offering the IB in **lieu of the Ontario Secondary School Diploma (OSSD)**. As our students progress, we intend to implement the **Diploma Programme (DP)** in the upper years, providing them with a **world-class certification** that opens doors to top universities and institutions worldwide.

## What the MYP Brings to The NEW School

- **Global Perspective & Intercultural Understanding**  
Students develop international-mindedness, empathy, and respect for others as they explore diverse cultures, beliefs, and worldviews.
- **Rigorous, Relevant Curriculum**  
With eight integrated subject areas, students develop strong academic skills across disciplines like science, humanities, arts, design, math, and more, all while applying their learning to real-world problems.
- **Inquiry-Based Learning**  
The program promotes curiosity and independent thinking, empowering students to take ownership of their learning and explore topics through a biblical lens of truth and purpose.
- **Service as Action**  
Community service is a core component, aligning with our Christ-centered mission and encouraging students to put their faith into action.
- **Personal Project**  
In their final year of the program, students engage in a year-long independent project that reflects their passions, values, and learning journey.

## Why This Matters

Becoming an IB World School will enhance our ability to:

- Offer internationally recognized, future-ready education rooted in Christian values.
- Attract mission-aligned families seeking a global, inquiry-based education for their children.
- Equip students with the skills and mindset to thrive academically, emotionally, and spiritually in a rapidly changing world.

As we continue the authorization process, we are committed to maintaining the essence of The NEW School's identity while expanding our academic offerings and deepening our students' learning experience.

We are excited for this next chapter and deeply grateful for your support and partnership as we grow into a globally connected and spiritually grounded learning community.

---

*For more information about the MYP or our IB candidacy journey, please speak to the School Director or visit [ibo.org](http://ibo.org).*



# Daily and Yearly Routines

9am -9:30am	Breathwork/Morning Meditation/Intention Setting/Prayer
9:30- 10:45am	Outdoor STEM Learning/Outdoor Phys. Ed/Tennis
10:45-11:45pm	Focused Learning (Indoors)
11:45-12:00pm	Lunch
12:00-12:15pm	Lunch Continued Or Free Play- Cooperative Games/Montessori Materials For Children Who Are Finished
12:15-1:15pm	French Class/Chess Instructions/Guided Reading/Piano Classes/ Reading Buddies
1:15- 2:15pm	Outdoor Learning (Second Block + Free Play)
2:15-3:15pm	Focused Learning Block Indoors
3:15pm - 3:25pm	Clean Up Chores
3:25-3:30pm	Final Savasana/Reflection



# 2025-2026 School Calendar

PA Days and Holidays	Date
N.E.W. School Start Date	September 3, 2025
PD Day - NO SCHOOL	October 3, 2025
Thanksgiving Monday	October 13, 2025
PD Day - Parent Teacher Interviews	November 14, 2025
Winter Break	December 22 - January 2, 2026
PD Day - NO SCHOOL Interim Report Cards sent home	February 13, 20256
Family Day	February 16, 2026
March Break	March 9-20, 2026
Good Friday - NO SCHOOL	April 3, 2026
Easter Monday - NO SCHOOL	April 7, 2026
PD DAY - Parent-Teacher Interviews - NO SCHOOL	April 17, 2026
Victoria Day	May 18, 2026
Final Report Cards & Last Day of Classes	June 26, 2026
PD Day - Planning 2026/2027 - NO School	June 29th & June 30th, 2026



## Health and Safety Policies

---

### Health Protocols

The health and well-being of our students are of utmost importance. Families are responsible for ensuring their children are healthy when attending school. If a child is visibly ill, they should stay home to rest and recover. Parents must inform the the Educational Director by 8:15am if a child will be absent. Proper hygiene, cleanliness, and preventative measures are emphasized to minimize the spread of illnesses within our close-knit community.

### Emergency Procedures

The NEW School has established comprehensive emergency preparedness protocols to ensure the safety of all students. The school is equipped with up to date fire extinguishers and fire exit signs and lights and staff are trained to handle various emergency scenarios. In case of an actual emergency, parents will be promptly notified through the school's communication channels. Contact information for emergency services and local resources is readily accessible to staff.

### Medication and Allergy Management

To maintain a safe environment, parents must provide detailed information about their child's medical needs and allergies during the registration process. Medications required during school hours must be submitted to the designated staff member with written instructions from a healthcare provider. Teachers and staff are trained to handle allergic reactions and administer emergency care when necessary.

## Code of Conduct and Community Expectations

### Behavioral Expectations

The NEW School fosters a Christ-centered community where respect, kindness, and cooperation are essential. Students are expected to treat others with dignity and compassion, following the school's core values in their daily interactions. Classroom rules are collaboratively created with students at the start of the school year to encourage ownership and accountability. We will have all teachers make some general 3R's rule charts with the children on week 1 of school. All students will sign the rule charts that will be displayed in the classrooms. As the students are participating and agreeing to the school rules, if they are broken/ violated in anyway and teachers deem it necessary for a child to be picked up from school we ask that parents be prepared to keep their child home for the remainder of the school day. We always aim to create safe and loving spaces for all our students, when a child crosses a boundary that impedes this for other students then they will be sent home from school and asked to return only after consulting with the Director.

### Discipline Policy

The school's approach to discipline focuses on respect, reconciliation, and restoration. When conflicts arise, students are guided to reflect on their actions, understand their impact, and seek resolution. In cases of significant boundary violations, parents may be required to pick up their child for the remainder of the day. Reintegration into the classroom will follow a consultation with the school director, ensuring that all students feel safe and supported.



# Family & School Engagement Guidelines

## Parental Involvement and Community Participation

The NEW School thrives on active parent participation. Families are encouraged to engage in their child's education through volunteering, attending events, and supporting school initiatives. Volunteer opportunities include assisting with school events, leading extracurricular activities, and helping with off-site learning experiences. Parental involvement strengthens the school community and enhances the learning experience for all students.



## Drop-Off Policy

Drop-off begins at 8:45 AM with a calming breathwork session to start the day. The director will be present at the door to greet each child as they arrive. To promote independence and foster confidence in every child, parents are kindly asked to drop their children off at the door and refrain from entering the school building during drop-off. Once at the door, students will be warmly welcomed and guided by the director to prepare themselves for the day ahead. This practice empowers children to take ownership of their arrival and start their day with confidence. Thank you for your support in fostering this valuable growth opportunity.

## Dress Code Guidelines

The NEW School promotes a practical dress code to support comfort, safety, and suitability for active, nature-based learning. Students should wear weather-appropriate clothing, including rain boots, mud pants, and windbreakers for outdoor activities. Indoor shoes are required, and all items should be labeled to avoid misplacement. The focus is on functionality rather than formality.

## School Supplies

A list of required school supplies is provided at the start of the academic year. Parents are encouraged to choose sustainable and eco-friendly options, reflecting the school's commitment to environmental stewardship. Essential items include notebooks, writing utensils, yoga mats and reusable water bottles.





# Communication Protocols

## Parent-Teacher Communication

Open communication between parents and teachers is vital to student success. However, communication is restricted to scheduled parent-teacher interviews or meetings arranged in advance. If you have a concern or need to address an issue, you must schedule a time to meet with the teacher or school director. For specific classroom-related concerns, parents are required to contact the classroom teacher first via their NEW school email.

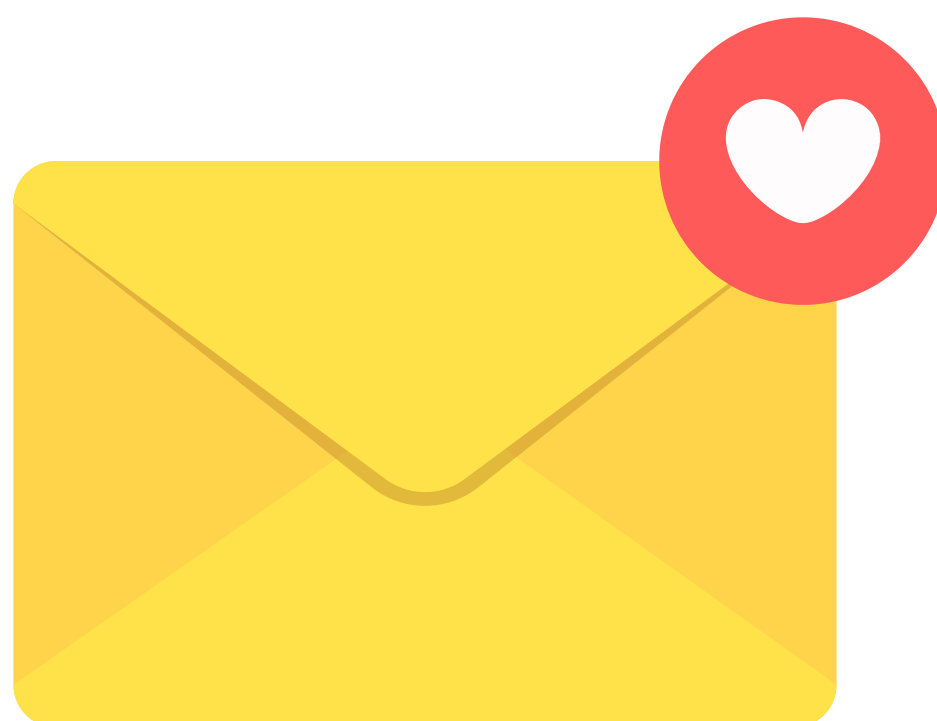
Teachers' privacy and time off are to be respected. They will not be available after school hours, during lunch breaks, or while actively supervising students. Meetings can only occur during designated times while another teacher is present with the students to ensure uninterrupted learning. Parents are not permitted to interrupt classroom learning or contact teachers during school hours unless a prior meeting has been scheduled. For late drop off's or early pick ups please advise the Director the morning of as to make arrangements for your child. Teachers will not have their cell phones available to address any parent tardiness or interruption.

## Updates and Announcements

The school regularly shares updates and announcements through newsletters, emails, and via the School utilized App. Parents are encouraged to stay informed about school events, policies, and student achievements through these channels. **Parents are required to download and use the App that will be used as the main communication tool for the 2025-2026 school year.**

## Feedback Channels

The NEW School values parent feedback as part of its commitment to continuous improvement. Parents can share suggestions, concerns, or ideas through formal surveys, scheduled meetings with school leadership, or the designated communication platform. Private emails to the director should be the first approach to communicating any feedback. Constructive dialogue fosters a strong partnership between families and the school. App chat groups are intended for the purpose of encouraging and admiring kids' learning progress and should not be used to address any concerns.





# Enrichment Programs and Extra Curricular Activities

## After-School Programs

The NEW School offers a diverse range of optional extra curricular and enrichment programs with additional fees (*subject to change*):

- **Art Program:** Offered through The Art Cart. *\*subject to change for September 2025*
- **STEM Club:** Runs periodically in designated blocks throughout the year. Registration is mandatory through the STEM page on the school's website: [www.newearthwonderschool.com/stem](http://www.newearthwonderschool.com/stem)
- **Music Lessons:** Offered by Vladi with various instruments available for instruction. *\*subject to change*
- **Tennis Lessons:** Bi-weekly during the fall and spring seasons at Weston Lions Club.
- **Skating:** Seasonal lessons held at Weston Lions Arena.
- **Chess Lessons:** Provided by the Math and Chess Association of Canada
- **Musical Theatre:** Bi-lingual (French-English) musical theater classed and workshops.

## Field Trips and Specialty Workshops

As part of the school's commitment to growth mindset and hands-on learning, students participate in monthly real-world experiences, which are wide-ranging and designed to expose them to a variety of environments and contexts. These experiences allow students to engage with local communities, environmental initiatives, and apply classroom knowledge to real-world contexts. Additionally, monthly workshops with specialists from various fields provide invaluable learning opportunities that enrich the students' educational journey.

## Community Service and Involvement

Aligned with the school's Christ-centered values, students are directed to engage in community service projects. These opportunities include helping local charities, organizing donation drives, and participating in neighborhood clean-up events. Community involvement teaches students the importance of compassion, generosity, and active citizenship.





# Our Application Process & Tuition

We are delighted that you are considering The NEW School for your family's educational journey! Our application process is designed to ensure we have an opportunity to get to know each other. Our admissions process works as a two-fold opportunity for us to get to know your family and for you to explore what makes our school so unique. Together, we ensure our school's core values and mission match your vision for your child's educational journey. Site visits with the Educational Director must be booked before Registration forms can be accepted.

Our families believe in and honour the educational partnership with the school. Families, visitors, and the whole school team collaborate to create a loving, joyful, innovative learning experience for our students. Once a thorough site visit is completed, the director will schedule some complimentary trial days for your child to attend our school. Registering during this time will give you enrollment priority and secure your spot! We are still accepting applications and have **rolling admissions year-round** based on space availability. Once the trial period is completed and registration forms are filled out and deposit and NEW student fee is paid your child's spot is secured.

## Tuition + Fees

At the New Earth Wonders School, we strive to make our fees affordable and transparent for all families. We believe that our tuition fees represent a sound investment in your child's education and future.

Our conscientious academic program is designed to provide your child with the knowledge, skills, and confidence they need to succeed in life. Our colourful add-on programs like Art Courses, French Classes, Chess Lessons and catering options such as hot lunches and a smoothie/juice bar which complement our program are optional based on family needs.

We are here to help you make the best decision for your child's education. For inquiries about financial aid or sibling discounts please contact us directly to discuss possible options.

*\*Please note that these fees are for one school year and cover the cost of instruction, materials, and some school-related activities. Additional fees such as lunch, extra curricular or specialty programs are not included in these fees.*

**Tuition Fees:** The annual tuition for the 2025-2026 school year is \$13,500. A \$3,500 deposit is due at the time of registration to secure your child's spot. This amount is deducted from the total tuition balance. **All deposits and tuition payments are strictly non-refundable. Early withdrawal from the program will result in the forfeiture of paid deposits and tuition.**

**Upon choosing The NEW School as an educational solution for your child's learning, a full school year commitment is required. A \$444 Non-Refundable NEW Student Fee payable 1 time per new registered student is collected upon receiving the Registration Form.**

### Tuition

\$13,500 annually

### Fees

- NEW student Fee \$444 per student
- IB Matriculation Fee \$1,111 - Begins at grade 6
- Lunch is billed separately based on orders.
- Extracurricular activities are not included.
- Bounced checks or insufficient funds will incur an additional fee.

\*Sibling Discounts available.





# Attendance Policy

---

The NEW School values the role of consistent attendance in fostering a dynamic, Christ-centered, and growth-oriented learning environment. Regular attendance ensures that students benefit fully from our unique educational programs, including outdoor exploration, piano and French lessons, and a balanced, sustainability-focused curriculum. Below are the expectations for attendance, tardiness, and absences:

## Expectations for Attendance

1. **Regular Attendance:** Students are expected to attend school daily, arriving prepared to engage in all activities and learning opportunities. Active participation is essential to their growth and contribution to the school community.
2. **School Hours:** The school day begins with drop off between 8:45 AM and 9:00 AM and concludes at 3:30 PM. Students are encouraged to plan to arrive by 8:45 AM to settle in and prepare for the day's activities.
3. **Outdoor Time:** Our program includes 2 ½ hours of daily outdoor time in nature. Attendance during these hours is crucial as it is a core part of our balanced and experiential learning approach.

## Tardiness

1. **Punctuality:** Arriving on time is a fundamental aspect of respect and responsibility. Students arriving after 9:05 AM will be marked as tardy.
2. If parents are not at school prior to 9:30 AM for outdoor transition, the only other time to drop children off will be strictly during the lunch block between 11:45 AM and 12:15 PM.
3. **Late Arrivals:** If a student will be late, parents must notify the school Director by phone by 8:15 AM. Chronic tardiness disrupts the learning environment and may require a meeting with parents to address the issue.
4. **Morning Transition:** Students arriving late may miss critical morning routines, including breathwork, reflection, and announcements, which set the tone for the day.

## Absences

1. **Reporting Absences:** Parents must inform the school of any planned or unplanned absences by 8:15 AM on the day of the absence. For planned absences, such as vacations, advance notice of at least one week is requested.
2. **Unexpected Absences:** Absences due to illness, family emergencies, or other unavoidable circumstances will be considered excused.

## Make-Up Work

1. **Responsibility for Missed Work:** Students are responsible for completing all assignments and activities missed during their absence. Students should take on the responsibility directly with the teacher to collect materials and plan for make-up work.

## Support for Families

The NEW School understands that unforeseen circumstances can arise. Our staff is committed to working with families to support consistent attendance while accommodating individual needs. Open communication is key to ensuring the success and well-being of every student in our care.



# Safety Policies

## Device-Free School Policy

The use of devices has become a hindrance to mental development in today's day and age, we have a strict no device policy at this school. If children are asked to bring in devices for a specific assignment or project, they will be informed the day before by the teacher-otherwise we ask that children leave all devices at home. No devices are permitted during lunch or break times to encourage conversation and connection, fostering the sense of community we aim to build. Devices include phones, cameras, smart watches and any battery operated or electronic gadgets.



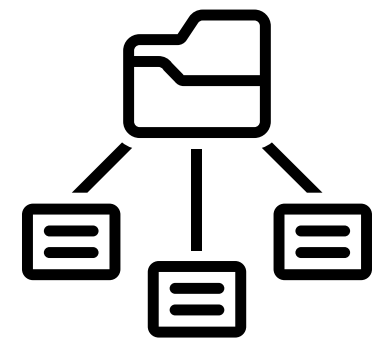
## Privacy Policy

The NEW School is committed to safeguarding the privacy of our students, families, and staff. We operate privately and do not share any personal information with the Ministry of Education.



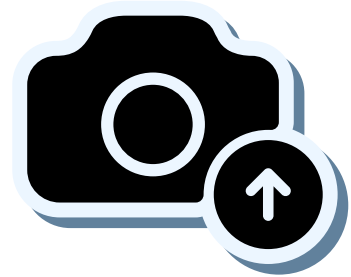
## Use of Information

Personal information collected during registration is used solely for school operations and communication. This includes contact details, emergency information, and any additional data necessary for student safety and learning.



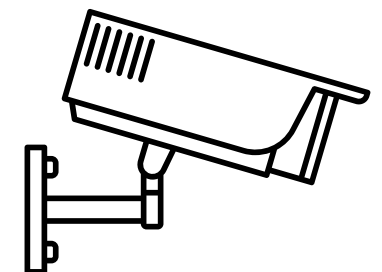
## Photography and Media

Parents can opt in or out of having their child's photos or videos used for school-related purposes, such as newsletters or promotional materials, by indicating their preference on the registration form.



## Camera Footage

For safety purposes, the school uses camera monitoring both indoors and in the parking lot area of the campus.



## Personal Toys And Gadgets Policy

We ask that personal toys and gadgets stay at home during school hours unless indicated by teacher that the personal item is permitted for the day.



## Frequently Asked Questions

Refer to website: <https://newearthwondersschool.com/new-curriculum> (FAQs)

We do have policies in place- Please view our standard policies and procedures in our registration form, which you can [download here](#).

For Our Gender + Race Policy

We Do Not Support Critical Race Theory OR Gender Fluidity.

Instead of teaching students what to think, we teach them how to think.

As our world continues to shift rapidly, we have now found ourselves in a time of more controlled messaging from the media and unprecedented censorship in Canada. The repeated messaging from the media shapes cultural norms and the way we view social and cultural issues. Rather than jump on board with the mass media's storyline, we challenge our students to question, research, analyze and consider issues from multiple perspectives before coming to their own conclusions.

For this reason, as a school, we do not promote or teach Critical Race Theory, Gender Fluidity, or the mainstream narrative surrounding Covid, all hot topics that many schools are now choosing to teach as factual rather than as the theories they are.



# The NEW School Charity

---

## A Christian Alternative To A Broken System.

We know more families than ever are opting to leave the system of institutionalized learning.

The New Earth Wonders School started as a solution to a broken education system. It currently offers a loving and intentional learning space rooted in Christian values that supports students K-8 and their families. Guiding students to embody the fruits of the Spirit; The NEW School is a place where families can thrive and grow- a place that stands for Freedom!

## Our Solution-Driven Mission.

Our mission is to help families seeking ultimate freedom to access this educational community. We aspire to create bursaries for families with financial needs as well as continue to grow and enrich our incredible school and the resources available to our students.

## How You Can Help.

Creating a parallel learning system for our children is a big goal. It requires support from individuals in our community – like you!

## Donate To Our Charity.

Donating to our NEW School Charity will directly impact our goal of expanding our mission to reach more families and children. Contributions will also be used to build a fund to help students access this type of education and also to elevate the educational paradigm for generations to come.

**Note: Charitable tax receipts will be issued for all donations.**

**Please see appendix C for Charitable Donation Form**





Dear Parents and Guardians,

Thank you for choosing The NEW School as the foundation of your child's educational journey. Our mission is not just to educate but to inspire, nurture, and guide every child toward becoming a compassionate, purpose-driven individual. Together, as a community of families, educators, and leaders, we are building a Christ-centered environment where children can grow academically, spiritually, and socially.

I encourage you to connect with us, participate in school events, and share your unique talents and perspectives. Your involvement is invaluable in creating a vibrant, supportive community that enriches the learning experience for everyone.

We are honored to partner with you in your child's growth and look forward to an incredible year ahead.

Blessings,

*Angela Anna Maria Sena*

Angela Sena  
Founder and School Visionary  
The NEW School





# Parent Handbook Acknowledgment & Agreement

---

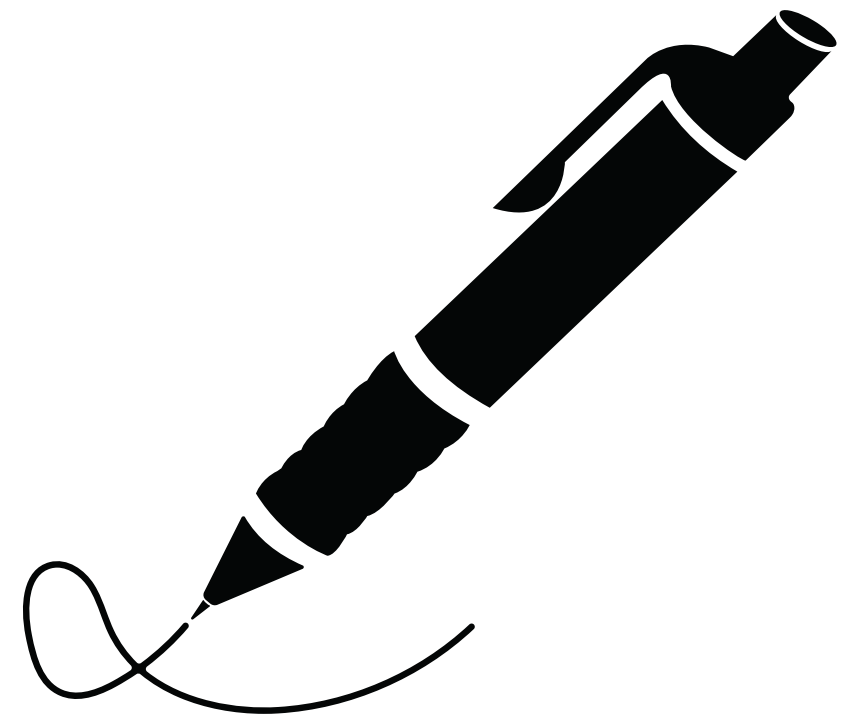
By signing below, I confirm that I have read and understood The NEW School Parent Handbook. I agree to respect and uphold the guidelines, values, and policies outlined within, fostering a Christ-centered, balanced, and growth-oriented learning environment for my child.

Parent Name: (please print) \_\_\_\_\_

Parent Signature: \_\_\_\_\_

Parent Name: (please print) \_\_\_\_\_

Parent Signature: \_\_\_\_\_





**Appendix A**  
**Student Registration Form**

**Appendix B**  
**Referral Incentive Program**

**Appendix C**  
**Charitable Donation Form**



# The NEW School Student Registration Form

Start Date: **September 3, 2025**

Child's Name: \_\_\_\_\_

Age: \_\_\_\_\_ Grade: \_\_\_\_\_

Date of Birth: \_\_\_\_\_

Gender: \_\_\_\_\_

## Parent/Guardian Information:

Parent/Guardian(s) Full Name(s): \_\_\_\_\_

Contact Numbers(s) \_\_\_\_\_

Emails: \_\_\_\_\_

Address: \_\_\_\_\_

Marital Status of Parents: Married, Single/Separated, Divorced, Widowed (Circle one)

Child lives with: Both Parents, Father, Mother, Other

## Emergency Contacts:

Name: \_\_\_\_\_

Phone Number: \_\_\_\_\_

Name: \_\_\_\_\_

Phone Number: \_\_\_\_\_

## Medical Information:

Doctor's Name: \_\_\_\_\_ Phone Number: \_\_\_\_\_

Health Card #: \_\_\_\_\_

Medical Condition/Allergies: \_\_\_\_\_

\_\_\_\_\_





# The NEW School Tuition Schedule & Tuition Agreement

Thank you for choosing The NEW School as your child's educational solution. Below is a detailed explanation of the tuition agreement and tuition schedule to ensure clarity and transparency.

## Enrollment Commitment:

Enrollment at The NEW School requires a full school year commitment. Enrollment is secured by signing this Tuition Contract and submitting all required payments and forms.

## New Student one-time Fee:

A \$444 Non-Refundable **NEW Student Fee** is required for **each new student**. This fee reflects administrative and resource adjustments for new students enrolling. This fee must be submitted along with this form & the deposit to secure your child's registration.

## Payment methods:

- Cash
- Cheque (payable to The NEW School)
- Credit Card (3% processing fee applies; see payment section below for details)

**Tuition Fees:** The annual tuition for the 2025-2026 school year is \$13,500 for students enrolling on or after March 8, 2025. **Deposits and signed forms must be received by to secure enrolment.**

A \$3,500 deposit is due at the time of registration to secure your child's spot. This amount is deducted from the total tuition balance. **All deposits and tuition payments are strictly non-refundable. Early withdrawal from the program will result in the forfeiture of paid deposits and tuition.**

**Tuition Payment Schedule** Initial deposit of \$3500 with registration forms due with forms and the remaining balance of tuition can be paid in one of three ways:

## Monthly Payments:

Ten (10) equal payments of \$1,100 each, due on the 1st of the month from September 1st to June 1st, 2026. (\$100/month fee included; \$1000 total).

## Quarterly Payments:

Three (3) equal payments of \$3500 each, due September 1, 2025, December 1st, 2025, March 1, 2026. (\$500 total fee included)

**Yearly Payment:** One lump-sum payment of \$10,000 due by September 1st, 2025 (no additional fees).

## Discounts:

Families with multiple children enrolled will receive a \$1,000 sibling discount applied to the tuition balance for each additional child.

## Payment Options:

Please select one payment method below by checking the box:

**Credit Card** (3% credit card processing fee applies to all transactions. Must complete the credit card authorization section below).

**Post-Dated Cheques:** (Submit ten (10) post-dated cheques for \$1,100 each, dated January 1st to June 1st, 2025,  
OR (Submit ten (3) post-dated cheques for \$3,500 each, dated September 1, 2025; December 1, 2025, & March 1, 2026  
OR Submit one (1) cheque the yearly tuition balance of \$10,000, dated September 1, 2025. **Cheques must be payable to The NEW School.**

**Please note: Bounced cheques will incur a \$50/transaction charge-back administrative fee.**

**By signing below, I acknowledge and agree to the terms outlined in this Tuition Contract, including the full-year commitment, non-refundable payments, and adherence to the school's policies and protocols on pages 5-7. Review and sign-off of Parent Handbook is required to complete Registration.**

Parent/Guardian Signature: \_\_\_\_\_ Date: \_\_\_\_\_

Thank you for being part of The NEW School community. We look forward to partnering with you in your child's educational journey.



# Credit Card Authorization Form

## Card Type:

Visa

Mastercard

Amex

Credit/Debit Card Number:

Expiry Date:

CVV:

-----

-----

-----

Name as seen on Card:

-----

Signature:

-----

Full address associated with Card:

-----

By signing the above Payment Information Page you are AUTHORIZING your card will be automatically charged the deposit & registration fee amount immediately; and then the 1st of month beginning September 2025 for the tuition amount owed to **The NEW School**.

**Credit Card payments will incur a 3% fee.**

\*\*\*Bounced credit cards will incur a \$50/transaction charge-back administrative fee.



# Vision & Values Agreement

At **The NEW School**, our mission is to nurture children who are inspired by the love of Christ, rooted in balance, committed to sustainable living, and equipped with a growth mindset. We believe education is a transformative journey that shapes the whole child—spiritually, academically, socially, emotionally, and physically. These guiding principles align with our four pillars, creating a framework for a flourishing community of learners and leaders.

## Vision:

We envision an education that goes beyond academics to develop well-rounded individuals who possess:

- Christ-centered** values, cultivating a love for truth, kindness, and self-discipline.
- A **Growth Mindset**, embracing challenges and building confidence in their unique abilities.
- A balanced, **Rooted in Balance** lifestyle, where learning and play coexist harmoniously.
- A deep appreciation for the natural world, reflecting our **Experience Sustainability** pillar.

## Core Values:

**Holistic Development:** Education should integrate academic, emotional, social, physical, and spiritual growth, encouraging children to thrive in all aspects of life.

**Morals and Beliefs:** We prioritize building a foundation of virtues, such as love, joy, peace, and faithfulness, to guide children in making ethical and meaningful decisions.

**Outdoor Learning:** Nature is a classroom full of wonder. Daily outdoor time fosters creativity, practical skills, and an appreciation for God's creation.

**Balance:** A healthy ratio of structured learning, play, and exploration is essential to nurture curiosity, imagination, and well-being.

**Physical Fitness:** Sports and physical activities develop teamwork, resilience, and lifelong habits for physical and emotional health.

**Creative Expression:** Music, art, and mindfulness practices help children express themselves, find calm, and appreciate beauty.

**Inclusive Community:** We cultivate respect, inclusion, and awareness, fostering friendships and mutual understanding across differences.

**Healthy Environment:** We emphasize natural health, organic living, and reducing exposure to harmful environmental factors in our learning spaces.

**Partnership with Families:** Parents and the school work together, aligning values and building a strong, Christ-centered community.

## Parent Commitment Agreement

As a/the parents in The NEW School community, I/we, \_\_\_\_\_, commit to supporting the Vision and Values of this school, as described above.

I/we agree to:

**Model Integrity:** Uphold the school's principles in our home, modeling Christ-centered values for my child.

**Support the Mission:** Actively align with the school's four pillars and core values in our family's approach to education and daily life.

**Foster a Healthy Lifestyle:** Encourage a balanced, sustainable lifestyle at home, consistent with the school's holistic values.

**Collaborate with the School:** Maintain open communication and partner with teachers and staff to nurture my child's growth.

I/we understand that the Vision and Values of The NEW School are foundational to its culture and my child's success. By signing this agreement, I/we affirm our dedication to fostering our child's growth in alignment with the mission and pillars of The NEW School.

Signatures: \_\_\_\_\_

Date: \_\_\_\_\_

By signing this document, I commit to upholding the principles of The NEW School and contributing to a Christ-centered, balanced, and supportive community. Please note signing the last page of the Parent Handbook is also a requirement of enrollment.



# NEW School Protocols & Policies

**1. School Hours:** The Door of the school will open at 8:45am. Please drop your child off between 8:45am and 9am so that they are ready to go promptly at 9am. School begins promptly at 9am and ends at 3:30pm daily. If your child is enrolled in after school activities which run Monday- Thursday pick up will be 4:30pm.

**2. Illness:** Every family is responsible for the health of their own child. We ask that parents use common sense and inform the teachers via chat group if the child will be absent from school. If your child is visibly ill please keep them home to rest and they may return to school at parent's discretion once they feel better. We ask that parents keep in mind that in our close-knit classrooms when one child gets ill it quickly travels throughout the whole school and so if your child is starting to show symptoms of any illness please keep them home to avoid spreading any illness.

**3. Proper Dress:** Please make sure your children come prepared to be outside rain or shine. This will likely include rainboots, mudpants, windbreakers etc. for the Fall months. Extra clothing and extra pairs of socks can be left at the school in your child's bin- PLEASE LABEL EVERYTHING. Indoor shoes are required.

**4. Appointments/ pick up's during school hour:** We ask that you do your best to schedule any medical or other appointments for your children outside the school hours. The teachers will not be using their phones to facilitate midday pickups/ drop-offs. If midday pickups cannot be avoided, we ask that they are done during the lunch hour and then the child is kept home for the remainder of the day.

**5. Behaviour:** We will have all teachers make some general 3R's rule charts with the children on week 1 of school. All students will sign the rule charts that will be displayed in the classrooms. As the students are participating and agreeing to the school rules, if they are broken/ violated in any way and teachers deem it necessary for a child to be picked up from school we ask that parents be prepared to keep their child home for the remainder of the school day. We always aim to create safe and loving spaces for all our students, when a child crosses a boundary that impedes this for other students then they will be sent home from school and asked to return only after consulting with the Director

**6. Food & Snacks:** We ask that as much as possible parents choose healthy, wholesome, nutrient dense lunches and snacks to send to school. Please avoid refined sugar, candy or junk foods. As a school community we aim to educate families on the importance of sustaining a healthy diet for our young learners. Sugar and processed foods will have a direct impact on children's behaviours and moods and so in the spirit of promoting healthy learning, we ask that no sugar drinks or foods be sent to school.

**7. Safety Protocols:** As the children will be out in the Humber River Trails as well as out in the world on our various school excursions, we will go over safety protocols when outside the school with all the students. Our goal is to prepare kids to live and function freely and safely in the world, without fear but with a sense of street smarts where they will be able to detect and deflect any danger coming their way. A sense of surrounding awareness is something we will work on with each group. For any and all urgent communications you will get updates on the chat group, and email follow ups.

**8. No devices permitted in School:** The use of devices has become a hindrance to mental development in today's day and age, we have a strict no device policy at this school. Devices include: phones, tablets, smartwatches and smart devices. No use of devices is permitted during lunch or break times as it interrupts the promotion of conversation and connection which is what we want to establish.

I/We parents of (child/ren's name )\_\_\_\_\_ agree to the following School Protocols. We understand the undertaking that creating an alternative type school entails for all parties involved and we agree to respect and uphold the above noted school policies and protocols.

-----  
Parent Signature

-----  
Date



# Release for Participation in Educational Program and Activities at ‘The New School’ operated by New Earth Wonders Inc.

In exchange for participation in The NEW School (the “Activity”), on the property used by The NEW School at 59 Kingdom Street, Etobicoke, ON, M9P 1W4 and facilitated by Business No. 797899416RR0001 (“Releasee”), I hereby agree as follows:

I and anyone claiming on my behalf release forever discharge Releasee and its affiliates, successors and assigns, officers, employees, representatives partners, agents and anyone claiming through them (collectively, the “Released Parties”), in their individual and/or corporate capacities from causes of action of any nature and kind, known or unknown, which I may have against Releasee or any Released Parties arising out of or relating to any injury, loss or damage to person and property that may have been sustained as a result of participation in the Activity (“Claims”).

I understand that participation on the Activity involves inherent risks, including risk of physical or psychological injury, pain, suffering, illness, disfigurement, temporary or permanent paralysis and/or death, and I assume all related risks and voluntarily participate in the Activity.

I agree to indemnify Releasee against all claims, actions, lawsuits, damages and judgements, including attorney’s fees, arising out of or relating to my participation in the Activity.

This Release for Participation in Event or Activity (“Release”) shall not be in any way construed as an admission by the Releasee that it has acted wrongfully with respect to me or any person, that it admits liability or responsibility at any time for any purpose, or that I have any rights whatsoever against the Releasee.

This Release shall be binding upon the parties and their respective heirs, administrators, personal representatives, executors, successors and assigns. I have the authority to release the Claims and have not assigned or transferred any Claims to any other party. If any provision is held to invalid or unenforceable, it shall not affect the validity or enforceability of any other provision. This Release constitutes or understandings between the parties concerning the subject matter of this Release. The Release may not be altered, amended or modified, except by a written document signed by both parties. The terms of this Release shall be governed by and construed in accordance with the laws of Ontario, Canada.

I have carefully read and fully understand the provisions of this Release and am freely, knowingly and voluntarily entering into this Release and waiving any claims against Canada Corporation No. 1349589-2 (“Releasee”).

## SIGNATURES

-----  
Signature of Releasor

-----  
Date

-----  
Printed Name of Releasor

-----  
Signature of Releasee

-----  
Date

-----  
Printed Name of Releasee



# The NEW School Calendar 2025/2026

We will be following the below Calendar for the 2025/2026 school year.

*\* subject to change*

PA Days and Holidays	Date
N.E.W. School Start Date	September 3, 2025
PD Day - NO SCHOOL	October 3, 2025
Thanksgiving Monday	October 13, 2025
PD Day - Parent Teacher Interviews	November 14, 2025
Winter Break	December 22 - January 2, 2026
PD Day - NO SCHOOL Interim Report Cards sent home	February 13, 2026
Family Day	February 16, 2026
March Break	March 9-20, 2026
Good Friday - NO SCHOOL	April 3, 2026
Easter Monday - NO SCHOOL	April 7, 2026
PD DAY - Parent-Teacher Interviews - NO SCHOOL	April 17, 2026
Victoria Day	May 18, 2026
Final Report Cards & Last Day of Classes	June 26, 2026
PD Day - Planning 2026/2027 - NO School	June 29th & June 30th, 2026



## The NEW School

✉ newearthwonders@gmail.com

📍 59 Kingdom Street, Etobicoke, ON

### Dear NEW School Families & Staff,

At New Earth Wonders School, we are committed to a bold and courageous movement in education, guided by our four foundational pillars: **sustainability**, **balance**, **growth mindset**, and a **Christ-centered philosophy**. We believe in the power of community, contribution, and service to create an environment where children flourish holistically. To help us build this community and share our mission, we're excited to introduce our **NEW Referral Program**, and we invite you to participate!

#### Program Details:

We are offering a **\$2,000 tuition credit** to families and school staff who successfully refer new students to New Earth Wonders School. Here's how it works:

#### 1. Eligibility:

- To qualify for the referral incentive, referred students must not have siblings currently or previously enrolled at New Earth Wonders School. The Referral Program is available to parents or guardians who are paying tuition
- for enrolled students and school staff members.

#### 2. Unlimited Referrals:

- There is no limit to the number of students a family can refer. The more families you bring to our community, the greater the rewards for you!

#### 3. Enrollment Requirements:

- New students must meet our standard enrollment criteria and must be enrolled for a full academic year (or, ten "tuition" months) before the credit is granted. The referring family must also remain enrolled for the entire
- academic year.

#### 4. Tuition Credit Application:

- Tuition credits will be applied as a reduction in tuition or monthly payments, depending on the current payment plan. Families who have paid their tuition in full will receive the credit on the next year's tuition. If the referring
- family is graduating from the school, they will receive an incentive check equivalent to the tuition credit. Teachers and staff (excluding the Principal and office staff) who make referrals will receive either a tuition
- credit or an incentive check if they do not have children enrolled in the school.

## 5. Referral Process:

- Referring families can make a referral to New Earth Wonders School **in person**, or **by email**. You will be asked to complete the New Earth Wonders School Referral Incentive Program Form for the referred family and we'll take care of the rest! To qualify, the referring family must complete the **Referral Incentive Program form**
- before the new family contacts the school. After we receive your referral form, **our team will contact the referred family** to invite them for a school tour, trial experience, and orientation meetings. This process will
- allow the family to get acquainted with our philosophy, meet our educators, and experience the atmosphere at New Earth Wonders School. Newly referred families will be asked to confirm their connection with the referring family during their enrollment interview.
- 

## 6. Late Enrollment:

- For newly referred families who enroll after the start of the school year and re-register for the following academic year, the referral family will have their award applied to the following school year, provided that they remain enrolled for the entire academic year (or, the equivalent of ten "tuitioned" months).

## 7. Important Note:

- Failure to submit a **completed Referral Incentive Program form** will result in the referring family being ineligible for the reward.

## Terms and Conditions:

- The interpretation of program parameters will be at the sole discretion of the Principal and the School's
- Administration. Referral rewards are designed to celebrate and reward our families for their contributions, and we are committed to transparency and fairness in their distribution.

By sharing your experiences with others, you're not only helping us grow but also offering new families the opportunity to be part of a community that supports the holistic growth of their children, nurtures their faith, and encourages sustainability, balance, and a growth mindset.

We are so grateful for your ongoing support and dedication to our shared vision. If you have any questions or are ready to participate in our Referral Program, please contact us at the NEW school - [newearthwonders@gmail.com](mailto:newearthwonders@gmail.com) - or at pick up/drop off!

Thank you for being an essential part of our school's journey and for helping us spread the word about the transformative education offered at New Earth Wonders School.

With gratitude,



**Angela Anna Maria Sena**  
**Founder & Visionary Director**  
**The NEW School**



# The NEW School

## Referral Incentive Program Form

Thank you for your interest in referring a family to New Earth Wonders School! Please complete the form below to participate in our Referral Program and help us build a community of families dedicated to holistic education, rooted in our four pillars of **sustainability, balance, growth mindset**, and a **Christ-centered philosophy**.

---

### Referring Family Information

Full Name of Referring Parent/Guardian:

-----

Email Address:

-----

Phone Number:

-----

Name(s) of Currently Enrolled Student(s):

-----

Relationship to New Earth Wonders School(e.g., parent, teacher, staff):

-----

### Referred Family Information

Full Name of Referred Parent/Guardian:

-----

Email Address of Referred Parent/Guardian:

-----

Phone Number of Referred Parent/Guardian:

-----

Name(s) and Grade(s) of Referred Student(s):

-----



# The NEW School Referral Program Agreement

---

## Participant Acknowledgment and Agreement

By signing below, I \_\_\_\_\_, agree to participate in The NEW School's Referral Program. I understand and acknowledge the following terms and conditions:

- 1. Referral Bonus:** I will receive a \$2,000 referral bonus for each student referred by me who enrolls in The NEW School and remains enrolled for a minimum of one full school year (the equivalent of one full school year, or ten "tuition" months - for example, student enrolls in February and remains in the NEW school until December the following school year).
- 2. Payout Method:** The referral bonus will be applied as a reduction in my tuition or monthly payments, depending on my current payment plan (and, as a cheque for school staff who refer families but do not have children in the school).
- 3. Eligibility:** The referred student must not have previously been enrolled in The NEW School. Only one referral bonus will be awarded per referred student.
- 4. Enrollment Requirement:** To qualify for the referral bonus, the referred student must complete at least one full year of enrollment, or, ten "tuitioned" months. If the student withdraws before the ten-month period, I understand that I will not be eligible for the referral bonus.
- 5. Tax Liability:** I understand that the referral bonus may be subject to tax liability, and it is my responsibility to report this income according to local laws.
- 6. Privacy and Conduct:** I agree to respect the privacy of prospective families and not share their personal information without consent. I also agree not to make false or exaggerated claims about The NEW School in order to secure a referral.
- 7. Limitations:** The school reserves the right to modify or terminate the Referral Program at any time, with prior notice provided to participants.

By signing below, I confirm that I have read, understood, and agree to the terms and conditions of The NEW School's Referral Program:

Referrer Name: \_\_\_\_\_

Signature: \_\_\_\_\_

Date: \_\_\_\_\_

## The NEW School Representative Approval

Representative Name: \_\_\_\_\_

Signature: \_\_\_\_\_

Date: \_\_\_\_\_

How Did You Make the Referral?

In Person

By Email

Other (please specify): \_\_\_\_\_

**Additional Information**

Any Additional Notes or Comments:

\_\_\_\_\_

**Acknowledgment**

By submitting this form, I confirm that I have made the referral to the New Earth Wonders School, and I have notified the referred family about being contacted by the school for a tour, trial experience, and orientation. I understand that in order to qualify for the referral incentive, the referred student must meet the standard enrollment criteria and remain enrolled for a full academic year. I also acknowledge that I must remain enrolled for the entire academic year to receive the incentive.

Referring Parent/Guardian Signature:

\_\_\_\_\_

Date:

\_\_\_\_\_

---

**\*\*For School Use Only\*\***

Date Received:

\_\_\_\_\_

Contacted Referred Family on:

\_\_\_\_\_

Referred Family Enrollment Status:

Enrolled

Not Enrolled

Referred Family Interview Date:

\_\_\_\_\_

Confirmation of Connection with Referring Family:

YES / NO



## The NEW School Charitable Donation Form

Dear Donor,

The New School is a private, alternative elementary school with a mission to help families seeking a Christ-centered education for their children. Our students grow, learn, thrive, and seek the truth, guided through the New way of uncovering a strong sense of self and purpose.

Your generous donation allows The NEW School to continue providing a nurturing and faith-centered environment where children can grow in wisdom, character, and creativity. With your support, we are able to enhance our educational programs and invest in resources that ensure our students are equipped to become future leaders.

Thank you

### Donor Information:

Name:

Address:  City:  Province:

Postal Code:  Phone Number:

Email Address:

Credit Card Number:

Expiry Date (MM/YY)  Card Type:  Visa  MasterCard  Other:

Card Verification Value (CVV)

### Donation Frequency:

Annual Donation

Monthly Donation

One-Time Donation

### Amount

\$25  \$50  \$100  \$500  \$1000  Other:

Signature: \_\_\_\_\_

By signing, I authorize The NEW School to charge my credit card for the amount indicated above.

### Disclaimer:

All donations are tax-deductible as permitted by Canadian law, An annual donation summary will be send vai email. The NEW School is a registered charity with the Canada Revenue Agency (CRA). No goods or services were provided in exchange for this donation. By providing your contact information, you consent to receiving updates on how your donation is making an impact through email and mail. We respect your privacy and will not share your information with third parties.

Please check this box if you prefer to opt-out of receiving future updates or correspondence from The NEW School.