

**BERRY-BELL & HALL**  
**Fallbrook Mortuary, Inc.**

333 North Vine St., Fallbrook, CA 92028

FD-828

BERRY-BELL & HALL MORTUARY

333 N. VINE ST,

FALLBROOK, CALIFORNIA, 92028-2156

Effective Date: 05/15/2026

## Disclaimer of Warranties

DISCLAIMER OF WARRANTIES: OUR FUNERAL HOME MAKES NO REPRESENTATIONS OR WARRANTIES AS TO ANY CASKETS OR CONTAINERS. The only warranties, expressed or implied, granted in connection with caskets and/or containers sold are the express written warranties, if any, extended by the manufactures thereof. OUR FUNERAL HOME HEREBY EXPRESSLY DISCLAIMS ALL WARRANTIES EXPRESSED OR IMPLIED, IN RELATION TO CASKETS AND/OR CONTAINERS, INCLUDING, BUT NOT LIMITED TO, THE IMPLIED WARRANTIES OF MERCHANTABILITY AND FITNESS FOR A PARTICULAR PURPOSE. OUR FUNERAL HOME MAKES NO CLAIM AND THERE IS NO EVIDENCE THAT ANY CASKET REPRESENTED AS HAVING PROTECTIVE FEATURES, WHICH MAY INCLUDE A GASKET, WILL PRESERVE HUMAN REMAINS OR COMPLETELY PREVENT THE ENTRY OF GRAVESITE ELEMENTS. NO BURIAL PRODUCT PREVENTS THE DECOMPOSITION OF REMAINS.



## FEATURES:

- Constructed of Mahogany Solid
- Champagne Velvet Interior
- Suitable for Burial
- Living Memorial® Program
- Hand-Crafted Marquetry Veneer
- Wood Bars
- Antique Hardware
- Brown Painted Finish
- Glendale Stain
- Dark Exterior Color
- Memorial Record® System
- Pre-Interment Warranty



Batesville reserves the right to change or update any products (including, without limitation, features, attributes and descriptions) at any time without notice. While Batesville strives to maintain accurate product information and images both digitally and in print, (1) product changes may potentially result in the existence of outdated product information and (2) actual products delivered may contain slight design/color variations. Customers are encouraged to visit [Batesville.com](http://Batesville.com) to obtain the most current product information and specifications needed for purchase decisions

Montrachet Mahogany  
148243

**\$17,095**



## FEATURES:

- Constructed of Bronze 48 oz.
- Champagne Velvet Interior
- Memory Safe® Drawer
- Elegant Urn Corner Design
- Suitable for Burial
- Living Memorial® Program
- Semi-precious metal, naturally resistant to rust and corrosion
- 24-Karat Gold Plated Hardware
- Black Painted Finish
- Black Exterior Color
- Accepts Decorative Casket Panel
- Brushed Finish
- Memorial Record® System
- Limited Warranty



Batesville reserves the right to change or update any products (including, without limitation, features, attributes and descriptions) at any time without notice. While Batesville strives to maintain accurate product information and images both digitally and in print, (1) product changes may potentially result in the existence of outdated product information and (2) actual products delivered may contain slight design/color variations. Customers are encouraged to visit [Batesville.com](http://Batesville.com) to obtain the most current product information and specifications needed for purchase decisions

Z64 Classic Gold  
147959

**\$15,995**



## FEATURES:

- Constructed of Bronze 32 oz.
- Champagne Velvet Interior
- 3 Family Choices® Personalization Features Available
- Memory Safe® Drawer
- Elegant Urn Corner Design
- Suitable for Burial
- Living Memorial® Program
- Semi-precious metal, naturally resistant to rust and corrosion
- Brown Painted Finish
- Brown Exterior Color
- Accepts Decorative Casket Panel
- Brushed Finish
- Memorial Record® System
- Limited Warranty



Z65 8J3 D DaVinci Bronze  
280178

Batesville reserves the right to change or update any products (including, without limitation, features, attributes and descriptions) at any time without notice. While Batesville strives to maintain accurate product information and images both digitally and in print, (1) product changes may potentially result in the existence of outdated product information and (2) actual products delivered may contain slight design/color variations. Customers are encouraged to visit [Batesville.com](http://Batesville.com) to obtain the most current product information and specifications needed for purchase decisions

**\$11,995**



## FEATURES:

- Constructed of Bronze 32 oz.
- Moss Pink Velvet Interior
- 3 Family Choices® Personalization Features Available
- Memory Safe® Drawer
- Elegant Urn Corner Design
- Suitable for Burial
- Living Memorial® Program
- Semi-precious metal, naturally resistant to rust and corrosion
- White Painted Finish
- White Exterior Color
- Accepts Decorative Casket Panel
- Memorial Record® System
- Limited Warranty



Batesville reserves the right to change or update any products (including, without limitation, features, attributes and descriptions) at any time without notice. While Batesville strives to maintain accurate product information and images both digitally and in print, (1) product changes may potentially result in the existence of outdated product information and (2) actual products delivered may contain slight design/color variations. Customers are encouraged to visit [Batesville.com](http://Batesville.com) to obtain the most current product information and specifications needed for purchase decisions

Z65 Primrose Bronze  
280184

**\$11,995**



## FEATURES:

- Constructed of Mahogany Solid
- Champagne Velvet Interior
- Memory Safe® Drawer
- Suitable for Burial
- Living Memorial® Program
- Distinctive Shell Design
- Wood Bars
- Antique Hardware
- Brown Painted Finish
- Premier Stain
- Dark Exterior Color
- Accepts Decorative Casket Panel
- Memorial Record® System
- Pre-Interment Warranty



Batesville reserves the right to change or update any products (including, without limitation, features, attributes and descriptions) at any time without notice. While Batesville strives to maintain accurate product information and images both digitally and in print, (1) product changes may potentially result in the existence of outdated product information and (2) actual products delivered may contain slight design/color variations. Customers are encouraged to visit [Batesville.com](http://Batesville.com) to obtain the most current product information and specifications needed for purchase decisions

Premier Mahogany  
148245

**\$8,995**



## FEATURES:

- Constructed of Copper 32 oz.
- Champagne Velvet Interior
- Memory Safe® Drawer
- Suitable for Burial
- Living Memorial® Program
- Semi-precious metal, naturally resistant to rust and corrosion
- Brown Painted Finish
- Brown Exterior Color
- Accepts Decorative Casket Panel
- Brushed Finish
- Memorial Record® System
- Limited Warranty



Batesville reserves the right to change or update any products (including, without limitation, features, attributes and descriptions) at any time without notice. While Batesville strives to maintain accurate product information and images both digitally and in print, (1) product changes may potentially result in the existence of outdated product information and (2) actual products delivered may contain slight design/color variations. Customers are encouraged to visit [Batesville.com](http://Batesville.com) to obtain the most current product information and specifications needed for purchase decisions

Y39 Aegean Copper  
147935

**\$8,995**



## FEATURES:

- Constructed of Copper 32 oz.
- Light Blue Velvet Interior
- Dual Overlay (Lace or Tailored) Feature
- 3 Family Choices® Personalization Features Available
- Memory Safe® Drawer
- Suitable for Burial
- Living Memorial® Program
- Semi-precious metal, naturally resistant to rust and corrosion
- Blue Painted Finish
- Blue Exterior Color
- Accepts Decorative Casket Panel
- Memorial Record® System
- Limited Warranty



Batesville reserves the right to change or update any products (including, without limitation, features, attributes and descriptions) at any time without notice. While Batesville strives to maintain accurate product information and images both digitally and in print, (1) product changes may potentially result in the existence of outdated product information and (2) actual products delivered may contain slight design/color variations. Customers are encouraged to visit [Batesville.com](http://Batesville.com) to obtain the most current product information and specifications needed for purchase decisions

Y33 Finch  
147942

**\$7,995**



## FEATURES:

- Constructed of Cherry Solid
- Champagne Velvet Interior
- 4 Family Choices® Personalization Features Available
- Memory Safe® Drawer
- Suitable for Burial
- Living Memorial® Program
- Wood Bars
- Red Painted Finish
- Victorian Cherry Stain
- Dark Exterior Color
- Accepts Decorative Casket Panel
- Memorial Record® System
- Pre-Interment Warranty



Batesville reserves the right to change or update any products (including, without limitation, features, attributes and descriptions) at any time without notice. While Batesville strives to maintain accurate product information and images both digitally and in print, (1) product changes may potentially result in the existence of outdated product information and (2) actual products delivered may contain slight design/color variations. Customers are encouraged to visit [Batesville.com](http://Batesville.com) to obtain the most current product information and specifications needed for purchase decisions

Embassy Cherry  
148222

**\$6,095**



## FEATURES:

- Constructed of Maple Solids and Veneers
- Champagne Velvet Interior
- 4 Family Choices® Personalization Features Available
- Memory Safe® Drawer
- Suitable for Burial
- Living Memorial® Program
- Family Remembrance Pieta Included
- Wood Bars
- Antique Hardware
- Reversible Pillow and Overthrow
- Red Painted Finish
- Collector's Cherry Stain
- Dark Exterior Color
- Accepts Decorative Casket Panel
- Memorial Record® System
- Pre-Interment Warranty



Sacrament Maple  
205164

Batesville reserves the right to change or update any products (including, without limitation, features, attributes and descriptions) at any time without notice. While Batesville strives to maintain accurate product information and images both digitally and in print, (1) product changes may potentially result in the existence of outdated product information and (2) actual products delivered may contain slight design/color variations. Customers are encouraged to visit [Batesville.com](http://Batesville.com) to obtain the most current product information and specifications needed for purchase decisions

**\$5,595**



## FEATURES:

- Constructed of Maple Solid
- Moss Pink Velvet Interior
- Memory Safe® Drawer
- Suitable for Burial
- Living Memorial® Program
- Embroidered Cap Panel Design
- Wood Bars
- Brown Painted Finish
- Vintage Maple Stain
- Light Exterior Color
- Accepts Decorative Casket Panel
- Memorial Record® System
- Pre-Interment Warranty



Batesville reserves the right to change or update any products (including, without limitation, features, attributes and descriptions) at any time without notice. While Batesville strives to maintain accurate product information and images both digitally and in print, (1) product changes may potentially result in the existence of outdated product information and (2) actual products delivered may contain slight design/color variations. Customers are encouraged to visit [Batesville.com](http://Batesville.com) to obtain the most current product information and specifications needed for purchase decisions

Laurel Maple  
146806

**\$5,295**



## FEATURES:

- Constructed of Steel Basic Stainless
- Silver Velvet Interior
- 4 Family Choices® Personalization Features Available
- Memory Safe® Drawer
- Suitable for Burial
- Living Memorial® Program
- Basic Series Chromium Stainless Steel
- Antique Hardware
- Blue Painted Finish
- Blue Exterior Color
- Accepts Decorative Casket Panel
- Brushed Finish
- Charpente® Interior System
- Memorial Record® System
- Limited Warranty



UG1 Silver Sapphire  
185491

Batesville reserves the right to change or update any products (including, without limitation, features, attributes and descriptions) at any time without notice. While Batesville strives to maintain accurate product information and images both digitally and in print, (1) product changes may potentially result in the existence of outdated product information and (2) actual products delivered may contain slight design/color variations. Customers are encouraged to visit [Batesville.com](http://Batesville.com) to obtain the most current product information and specifications needed for purchase decisions

**\$4,995**



## FEATURES:

- Constructed of Oak Solid
- Rosetan Crepe Interior
- Suitable for Burial
- Living Memorial® Program
- Wood Bars
- Reversible Pillow and Overthrow
- Brown Painted Finish
- Autumn Oak Stain
- Shaded Finish
- Medium Exterior Color
- Accepts Decorative Casket Panel
- Satin Finish
- Memorial Record® System
- Pre-Interment Warranty



Batesville reserves the right to change or update any products (including, without limitation, features, attributes and descriptions) at any time without notice. While Batesville strives to maintain accurate product information and images both digitally and in print, (1) product changes may potentially result in the existence of outdated product information and (2) actual products delivered may contain slight design/color variations. Customers are encouraged to visit [Batesville.com](http://Batesville.com) to obtain the most current product information and specifications needed for purchase decisions

Autumn Oak  
146884

**\$4,295**



## FEATURES:

- Constructed of Oak Solid
- Oatmeal Duck Cloth Interior
- Multiple Overlay (Lace, Realtree Camouflage or Tailored) Feature
- 7 Family Choices® Personalization Features Available
- Suitable for Burial or Cremation
- Living Memorial® Program
- Rough Sawn Oak
- Brown Painted Finish
- Patina Finish (Natural Weathered Wood with Sealer)
- Medium Exterior Color
- Accepts Decorative Casket Panel
- Satin Finish
- Memorial Record® System
- Pre-Interment Warranty



Batesville reserves the right to change or update any products (including, without limitation, features, attributes and descriptions) at any time without notice. While Batesville strives to maintain accurate product information and images both digitally and in print, (1) product changes may potentially result in the existence of outdated product information and (2) actual products delivered may contain slight design/color variations. Customers are encouraged to visit [Batesville.com](http://Batesville.com) to obtain the most current product information and specifications needed for purchase decisions

Fireside  
269166

**\$4,295**



## FEATURES:

- Constructed of Select Hardwoods and Veneers
- Rosetan Crepe Interior
- 4 Family Choices® Personalization Features Available
- Memory Safe® Drawer
- Suitable for Burial
- Living Memorial® Program
- Wood Bars
- Red Painted Finish
- Collector's Cherry Stain
- Dark Exterior Color
- Accepts Decorative Casket Panel
- Memorial Record® System
- Pre-Interment Warranty



Batesville reserves the right to change or update any products (including, without limitation, features, attributes and descriptions) at any time without notice. While Batesville strives to maintain accurate product information and images both digitally and in print, (1) product changes may potentially result in the existence of outdated product information and (2) actual products delivered may contain slight design/color variations. Customers are encouraged to visit [Batesville.com](http://Batesville.com) to obtain the most current product information and specifications needed for purchase decisions

Weyburn Last Supper  
251853

**\$3,995**



## FEATURES:

- Constructed of Select Hardwood Solid
- Ivory Linwood Interior
- Dual overlay (Ivory or Black) Featured
- 5 Family Choices® Personalization Features Available
- Memory Safe® Drawer
- Suitable for Burial or Cremation
- Living Memorial® Program
- Time-Honored Craftsmanship
- Distinctive Shell Design
- Red Painted Finish
- Russet Stain
- Dark Exterior Color
- Accepts Decorative Casket Panel
- Satin Finish
- Memorial Record® System
- Pre-Interment Warranty



Batesville reserves the right to change or update any products (including, without limitation, features, attributes and descriptions) at any time without notice. While Batesville strives to maintain accurate product information and images both digitally and in print, (1) product changes may potentially result in the existence of outdated product information and (2) actual products delivered may contain slight design/color variations. Customers are encouraged to visit [Batesville.com](http://Batesville.com) to obtain the most current product information and specifications needed for purchase decisions

410 Forever Honored - Black  
283933

**\$3,995**



## FEATURES:

- Constructed of Select Hardwood Solid
- Ivory Linwood Interior
- Dual overlay (Ivory or Blue) Featured
- 5 Family Choices® Personalization Features Available
- Memory Safe® Drawer
- Suitable for Burial or Cremation
- Living Memorial® Program
- Time-Honored Craftsmanship
- Distinctive Shell Design
- Red Painted Finish
- Russet Stain
- Dark Exterior Color
- Accepts Decorative Casket Panel
- Satin Finish
- Memorial Record® System
- Pre-Interment Warranty



Batesville reserves the right to change or update any products (including, without limitation, features, attributes and descriptions) at any time without notice. While Batesville strives to maintain accurate product information and images both digitally and in print, (1) product changes may potentially result in the existence of outdated product information and (2) actual products delivered may contain slight design/color variations. Customers are encouraged to visit [Batesville.com](http://Batesville.com) to obtain the most current product information and specifications needed for purchase decisions

410 Forever Honored - Blue  
283934

**\$3,995**



## FEATURES:

- Constructed of Steel 18 ga. Medium Weight
- Blue with Silver Trim Velvet Interior
- 1 Family Choices® Personalization Features Available
- Memory Safe® Drawer
- Suitable for Burial
- Living Memorial® Program
- Military Branch Embroidery Emblem, Family Choices LifeSymbols or Display Medallions design feature (1)
- Blue Painted Finish
- Blue Exterior Color
- Memorial Record® System



Batesville reserves the right to change or update any products (including, without limitation, features, attributes and descriptions) at any time without notice. While Batesville strives to maintain accurate product information and images both digitally and in print, (1) product changes may potentially result in the existence of outdated product information and (2) actual products delivered may contain slight design/color variations. Customers are encouraged to visit [Batesville.com](http://Batesville.com) to obtain the most current product information and specifications needed for purchase decisions

N01 Neopolitan  
279144

**\$3,995**



## FEATURES:

- Constructed of Steel 18 ga. Medium Weight
- Black with Red Trim Velvet Interior
- 1 Family Choices® Personalization Features Available
- Memory Safe® Drawer
- Suitable for Burial
- Living Memorial® Program
- Military Branch Embroidery Emblem, Family Choices LifeSymbols or Display Medallions design feature (1)
- Black Painted Finish
- Black Exterior Color
- Memorial Record® System



Batesville reserves the right to change or update any products (including, without limitation, features, attributes and descriptions) at any time without notice. While Batesville strives to maintain accurate product information and images both digitally and in print, (1) product changes may potentially result in the existence of outdated product information and (2) actual products delivered may contain slight design/color variations. Customers are encouraged to visit [Batesville.com](http://Batesville.com) to obtain the most current product information and specifications needed for purchase decisions

N01 Midnight with Red  
279141

**\$3,995**



## FEATURES:

- Constructed of Steel 18 ga. Medium Weight
- Black with Gold Trim Velvet Interior
- 1 Family Choices® Personalization Features Available
- Memory Safe® Drawer
- Suitable for Burial
- Living Memorial® Program
- Military Branch Embroidery Emblem, Family Choices LifeSymbols or Display Medallions design feature (1)
- Black Painted Finish
- Black Exterior Color
- Memorial Record® System



Batesville reserves the right to change or update any products (including, without limitation, features, attributes and descriptions) at any time without notice. While Batesville strives to maintain accurate product information and images both digitally and in print, (1) product changes may potentially result in the existence of outdated product information and (2) actual products delivered may contain slight design/color variations. Customers are encouraged to visit [Batesville.com](http://Batesville.com) to obtain the most current product information and specifications needed for purchase decisions

N01 Midnight with Gold  
279142

**\$3,995**



## FEATURES:

- Constructed of Steel 18 ga. Medium Weight
- Blue with Silver Trim Velvet Interior
- 1 Family Choices® Personalization Features Available
- Memory Safe® Drawer
- Suitable for Burial
- Living Memorial® Program
- Military Branch Embroidery Emblem, Family Choices LifeSymbols or Display Medallions design feature (1)
- Blue Painted Finish
- Blue Exterior Color
- Memorial Record® System



Batesville reserves the right to change or update any products (including, without limitation, features, attributes and descriptions) at any time without notice. While Batesville strives to maintain accurate product information and images both digitally and in print, (1) product changes may potentially result in the existence of outdated product information and (2) actual products delivered may contain slight design/color variations. Customers are encouraged to visit [Batesville.com](http://Batesville.com) to obtain the most current product information and specifications needed for purchase decisions

N01 Sydney  
279143

**\$3,995**



## FEATURES:

- Constructed of Select Hardwoods and Veneers
- Ivory Linwood Interior
- 7 Family Choices® Personalization Features Available
- Memory Safe® Drawer
- Suitable for Burial or Cremation
- Living Memorial® Program
- Wood Bars
- Red Painted Finish
- Collector's Cherry Stain
- Dark Exterior Color
- Memorial Record® System
- Pre-Interment Warranty



Crimson Montgomery  
285795

Batesville reserves the right to change or update any products (including, without limitation, features, attributes and descriptions) at any time without notice. While Batesville strives to maintain accurate product information and images both digitally and in print, (1) product changes may potentially result in the existence of outdated product information and (2) actual products delivered may contain slight design/color variations. Customers are encouraged to visit [Batesville.com](http://Batesville.com) to obtain the most current product information and specifications needed for purchase decisions

**\$3,695**



## FEATURES:

- Constructed of Select Hardwoods and Veneers
- Rosetan Crepe Interior
- 4 Family Choices® Personalization Features Available
- Memory Safe® Drawer
- Suitable for Burial
- Living Memorial® Program
- Wood Bars
- Reversible Pillow and Overthrow
- Brown Painted Finish
- Light Pecan Stain
- Light Exterior Color
- Accepts Decorative Casket Panel
- Memorial Record® System
- Pre-Interment Warranty



Batesville reserves the right to change or update any products (including, without limitation, features, attributes and descriptions) at any time without notice. While Batesville strives to maintain accurate product information and images both digitally and in print, (1) product changes may potentially result in the existence of outdated product information and (2) actual products delivered may contain slight design/color variations. Customers are encouraged to visit [Batesville.com](http://Batesville.com) to obtain the most current product information and specifications needed for purchase decisions

Trenton  
205161

**\$3,495**



## FEATURES:

- Constructed of Select Hardwoods and Veneers
- Ivory Linwood Interior
- 4 Family Choices® Personalization Features Available
- Suitable for Burial or Cremation
- Living Memorial® Program
- Wood Embossed Bars
- Red Painted Finish
- Collector's Cherry Stain
- Dark Exterior Color
- Accepts Decorative Casket Panel
- Charpente® Interior System
- Memorial Record® System
- Pre-Interment Warranty



Riley  
263783

Batesville reserves the right to change or update any products (including, without limitation, features, attributes and descriptions) at any time without notice. While Batesville strives to maintain accurate product information and images both digitally and in print, (1) product changes may potentially result in the existence of outdated product information and (2) actual products delivered may contain slight design/color variations. Customers are encouraged to visit [Batesville.com](http://Batesville.com) to obtain the most current product information and specifications needed for purchase decisions

**\$3,495**



## FEATURES:

- Constructed of Steel 18 ga. Medium Weight
- Natural Velvet Interior
- 3 Family Choices® Personalization Features Available
- Suitable for Burial
- Living Memorial® Program
- Purple Painted Finish
- Violet Exterior Color
- Brushed Finish
- Memorial Record® System
- Limited Warranty



Batesville reserves the right to change or update any products (including, without limitation, features, attributes and descriptions) at any time without notice. While Batesville strives to maintain accurate product information and images both digitally and in print, (1) product changes may potentially result in the existence of outdated product information and (2) actual products delivered may contain slight design/color variations. Customers are encouraged to visit [Batesville.com](http://Batesville.com) to obtain the most current product information and specifications needed for purchase decisions

OT9 Violet Bouquet  
241566

**\$3,495**



## FEATURES:

- Constructed of Steel 18 ga. Medium Weight
- Ivory Velvet Interior
- 3 Family Choices® Personalization Features Available
- Suitable for Burial
- Living Memorial® Program
- Blue Painted Finish
- Blue Exterior Color
- Accepts Decorative Casket Panel
- Brushed Finish
- Memorial Record® System
- Limited Warranty



Batesville reserves the right to change or update any products (including, without limitation, features, attributes and descriptions) at any time without notice. While Batesville strives to maintain accurate product information and images both digitally and in print, (1) product changes may potentially result in the existence of outdated product information and (2) actual products delivered may contain slight design/color variations. Customers are encouraged to visit [Batesville.com](http://Batesville.com) to obtain the most current product information and specifications needed for purchase decisions

OT9 Indigo Blue  
255454

**\$3,495**



## FEATURES:

- Constructed of Steel 18 ga. Medium Weight
- Champagne Velvet Interior
- 3 Family Choices® Personalization Features Available
- Memory Safe® Drawer
- Suitable for Burial
- Living Memorial® Program
- Reversible Pillow and Overthrow
- Gold Painted Finish
- Gold Exterior Color
- Accepts Decorative Casket Panel
- Memorial Record® System
- Limited Warranty



Batesville reserves the right to change or update any products (including, without limitation, features, attributes and descriptions) at any time without notice. While Batesville strives to maintain accurate product information and images both digitally and in print, (1) product changes may potentially result in the existence of outdated product information and (2) actual products delivered may contain slight design/color variations. Customers are encouraged to visit [Batesville.com](http://Batesville.com) to obtain the most current product information and specifications needed for purchase decisions

O61 Cashmere  
273663

**\$3,395**



## FEATURES:

- Constructed of Steel 18 ga. Medium Weight
- Ivory Woven Interior
- 1 Family Choices® Personalization Features Available
- Family Choices® Personalization LifeView Decorative Casket Panel
- Suitable for Burial
- Living Memorial® Program
- Red Painted Finish
- Red Exterior Color
- Accepts Decorative Casket Panel
- Memorial Record® System
- Limited Warranty



Batesville reserves the right to change or update any products (including, without limitation, features, attributes and descriptions) at any time without notice. While Batesville strives to maintain accurate product information and images both digitally and in print, (1) product changes may potentially result in the existence of outdated product information and (2) actual products delivered may contain slight design/color variations. Customers are encouraged to visit [Batesville.com](http://Batesville.com) to obtain the most current product information and specifications needed for purchase decisions

NL1 Claret  
251960

**\$3,395**



## FEATURES:

- Constructed of Select Hardwoods and Veneers
- Khaki Linwood Interior
- 4 Family Choices® Personalization Features Available
- Suitable for Burial or Cremation
- Living Memorial® Program
- Wood Embossed Bars
- Brown Painted Finish
- Pecan Stain
- Medium Exterior Color
- Satin Finish
- Charpente® Interior System
- Memorial Record® System
- Pre-Interment Warranty



Bailey  
263781

Batesville reserves the right to change or update any products (including, without limitation, features, attributes and descriptions) at any time without notice. While Batesville strives to maintain accurate product information and images both digitally and in print, (1) product changes may potentially result in the existence of outdated product information and (2) actual products delivered may contain slight design/color variations. Customers are encouraged to visit [Batesville.com](http://Batesville.com) to obtain the most current product information and specifications needed for purchase decisions

**\$3,295**



## FEATURES:

- Constructed of Select Hardwoods and Veneers
- Rosetan Crepe Interior
- 4 Family Choices® Personalization Features Available
- Suitable for Burial or Cremation
- Living Memorial® Program
- Brown Painted Finish
- Montgomery Walnut Stain
- Medium Exterior Color
- Accepts Decorative Casket Panel
- Satin Finish
- Charpente® Interior System
- Memorial Record® System
- Pre-Interment Warranty



Dryden Brown  
278271

Batesville reserves the right to change or update any products (including, without limitation, features, attributes and descriptions) at any time without notice. While Batesville strives to maintain accurate product information and images both digitally and in print, (1) product changes may potentially result in the existence of outdated product information and (2) actual products delivered may contain slight design/color variations. Customers are encouraged to visit [Batesville.com](http://Batesville.com) to obtain the most current product information and specifications needed for purchase decisions

**\$2,995**



## FEATURES:

- Constructed of Select Hardwood Solid
- Rosetan Crepe Interior
- Dual Overlay (Lace or Shirred) Feature
- 1 Family Choices® Personalization Features Available
- Family Choices® Personalization LifeView Decorative Casket Panel
- Suitable for Burial or Cremation
- Living Memorial® Program
- Cremation Friendly Perforated Metal LifeStories Panel
- Red Painted Finish
- Victorian Cherry Stain
- Dark Exterior Color
- Accepts Decorative Casket Panel
- Satin Finish
- Memorial Record® System
- Pre-Interment Warranty



Batesville reserves the right to change or update any products (including, without limitation, features, attributes and descriptions) at any time without notice. While Batesville strives to maintain accurate product information and images both digitally and in print, (1) product changes may potentially result in the existence of outdated product information and (2) actual products delivered may contain slight design/color variations. Customers are encouraged to visit [Batesville.com](http://Batesville.com) to obtain the most current product information and specifications needed for purchase decisions

Clifton  
263630

**\$2,995**



## FEATURES:

- Constructed of Select Hardwoods and Veneers
- Rosetan Crepe Interior
- Suitable for Burial or Cremation
- Living Memorial® Program
- Veneer Construction
- Brown Painted Finish
- Vintage Maple Stain
- Light Exterior Color
- Limited Warranty

**NewPointe®**  
Constellation Collections

Batesville reserves the right to change or update any products (including, without limitation, features, attributes and descriptions) at any time without notice. While Batesville strives to maintain accurate product information and images both digitally and in print, (1) product changes may potentially result in the existence of outdated product information and (2) actual products delivered may contain slight design/color variations. Customers are encouraged to visit [Batesville.com](http://Batesville.com) to obtain the most current product information and specifications needed for purchase decisions

Libra Light Brown  
248177

**\$2,995**



## FEATURES:

- Constructed of Steel 20 ga.
- Ivory Woven Interior
- 3 Family Choices® Personalization Features Available
- Suitable for Burial
- Living Memorial® Program
- White Painted Finish
- White Exterior Color
- Accepts Decorative Casket Panel
- Memorial Record® System
- Limited Warranty



Batesville reserves the right to change or update any products (including, without limitation, features, attributes and descriptions) at any time without notice. While Batesville strives to maintain accurate product information and images both digitally and in print, (1) product changes may potentially result in the existence of outdated product information and (2) actual products delivered may contain slight design/color variations. Customers are encouraged to visit [Batesville.com](http://Batesville.com) to obtain the most current product information and specifications needed for purchase decisions

S01 Carnation Blush  
278485

**\$2,995**



## FEATURES:

- Constructed of Steel 20 ga.
- Champagne Velvet Interior
- 4 Family Choices® Personalization Features Available
- Suitable for Burial
- Living Memorial® Program
- Green Painted Finish
- Green Exterior Color
- Accepts Decorative Casket Panel
- Charpente® Interior System
- Memorial Record® System
- Limited Warranty



Batesville reserves the right to change or update any products (including, without limitation, features, attributes and descriptions) at any time without notice. While Batesville strives to maintain accurate product information and images both digitally and in print, (1) product changes may potentially result in the existence of outdated product information and (2) actual products delivered may contain slight design/color variations. Customers are encouraged to visit [Batesville.com](http://Batesville.com) to obtain the most current product information and specifications needed for purchase decisions

M39 Huntington Green  
278177

**\$2,995**



## FEATURES:

- Constructed of Steel 20 ga.
- Ivory Velvet Interior
- 4 Family Choices® Personalization Features Available
- Suitable for Burial
- Living Memorial® Program
- White Painted Finish
- White Exterior Color
- Accepts Decorative Casket Panel
- Charpente® Interior System
- Memorial Record® System
- Limited Warranty



Batesville reserves the right to change or update any products (including, without limitation, features, attributes and descriptions) at any time without notice. While Batesville strives to maintain accurate product information and images both digitally and in print, (1) product changes may potentially result in the existence of outdated product information and (2) actual products delivered may contain slight design/color variations. Customers are encouraged to visit [Batesville.com](http://Batesville.com) to obtain the most current product information and specifications needed for purchase decisions

M39 Carnation  
273920

**\$2,995**



## FEATURES:

- Constructed of Steel 20 ga.
- Ivory Crepe Interior
- 3 Family Choices® Personalization Features Available
- Suitable for Burial
- Living Memorial® Program
- Blue Painted Finish
- Blue Exterior Color
- Accepts Decorative Casket Panel
- Memorial Record® System
- Limited Warranty



Batesville reserves the right to change or update any products (including, without limitation, features, attributes and descriptions) at any time without notice. While Batesville strives to maintain accurate product information and images both digitally and in print, (1) product changes may potentially result in the existence of outdated product information and (2) actual products delivered may contain slight design/color variations. Customers are encouraged to visit [Batesville.com](http://Batesville.com) to obtain the most current product information and specifications needed for purchase decisions

S01 Ocean Blue  
252121

**\$2,995**



## FEATURES:

- Constructed of Steel 18 ga. Medium Weight
- Ivory Crepe Interior
- Optional Decorative Kit Personalization
- Suitable for Burial
- Living Memorial® Program
- Silver Painted Finish
- Silver Exterior Color
- Limited Warranty

**NewPointe®**  
Constellation Collections

Batesville reserves the right to change or update any products (including, without limitation, features, attributes and descriptions) at any time without notice. While Batesville strives to maintain accurate product information and images both digitally and in print, (1) product changes may potentially result in the existence of outdated product information and (2) actual products delivered may contain slight design/color variations. Customers are encouraged to visit [Batesville.com](http://Batesville.com) to obtain the most current product information and specifications needed for purchase decisions

Virgo Silver  
279131

**\$2,995**



## FEATURES:

- Constructed of Steel 18 ga. Medium Weight
- Light Blue Crepe Interior
- Optional Decorative Kit Personalization
- Suitable for Burial
- Living Memorial® Program
- Blue Painted Finish
- Blue Exterior Color
- Limited Warranty

**NewPointe®**  
Constellation Collections

Batesville reserves the right to change or update any products (including, without limitation, features, attributes and descriptions) at any time without notice. While Batesville strives to maintain accurate product information and images both digitally and in print, (1) product changes may potentially result in the existence of outdated product information and (2) actual products delivered may contain slight design/color variations. Customers are encouraged to visit [Batesville.com](http://Batesville.com) to obtain the most current product information and specifications needed for purchase decisions

Virgo Blue  
279127

**\$2,995**



## FEATURES:

- Constructed of Select Hardwood Solid
- Rosetan Crepe Interior
- Suitable for Burial
- Living Memorial® Program
- Wood Bars
- Red Painted Finish
- Victorian Cherry Stain
- Dark Exterior Color
- Accepts Decorative Casket Panel
- Satin Finish
- Memorial Record® System
- Pre-Interment Warranty



Batesville reserves the right to change or update any products (including, without limitation, features, attributes and descriptions) at any time without notice. While Batesville strives to maintain accurate product information and images both digitally and in print, (1) product changes may potentially result in the existence of outdated product information and (2) actual products delivered may contain slight design/color variations. Customers are encouraged to visit [Batesville.com](http://Batesville.com) to obtain the most current product information and specifications needed for purchase decisions

Westridge  
146815

**\$2,895**



## FEATURES:

- Constructed of Steel 20 ga.
- Rosetan Crepe Interior
- Suitable for Burial
- Living Memorial® Program
- Gold Painted Finish
- Gold Exterior Color
- Accepts Decorative Casket Panel
- Memorial Record® System
- Limited Warranty



Batesville reserves the right to change or update any products (including, without limitation, features, attributes and descriptions) at any time without notice. While Batesville strives to maintain accurate product information and images both digitally and in print, (1) product changes may potentially result in the existence of outdated product information and (2) actual products delivered may contain slight design/color variations. Customers are encouraged to visit [Batesville.com](http://Batesville.com) to obtain the most current product information and specifications needed for purchase decisions

QF8 Lumina  
148054

**\$2,895**



## FEATURES:

- Constructed of Steel 20 ga.
- Light Blue Crepe Interior
- Suitable for Burial
- Living Memorial® Program
- Blue Painted Finish
- Blue Exterior Color
- Accepts Decorative Casket Panel
- Memorial Record® System
- Limited Warranty



Q88 Churchill Blue  
148030

Batesville reserves the right to change or update any products (including, without limitation, features, attributes and descriptions) at any time without notice. While Batesville strives to maintain accurate product information and images both digitally and in print, (1) product changes may potentially result in the existence of outdated product information and (2) actual products delivered may contain slight design/color variations. Customers are encouraged to visit [Batesville.com](http://Batesville.com) to obtain the most current product information and specifications needed for purchase decisions

**\$2,795**



## FEATURES:

- Constructed of Steel 20 ga.
- Ivory Crepe Interior
- Suitable for Burial
- Living Memorial® Program
- White Painted Finish
- White Exterior Color
- Accepts Decorative Casket Panel
- Memorial Record® System
- Limited Warranty



Batesville reserves the right to change or update any products (including, without limitation, features, attributes and descriptions) at any time without notice. While Batesville strives to maintain accurate product information and images both digitally and in print, (1) product changes may potentially result in the existence of outdated product information and (2) actual products delivered may contain slight design/color variations. Customers are encouraged to visit [Batesville.com](http://Batesville.com) to obtain the most current product information and specifications needed for purchase decisions

QA2 Ivory Gold  
148040

**\$2,795**



## FEATURES:

- Constructed of Steel 18 ga. Medium Weight
- Champagne Velvet Interior
- Optional Decorative Kit Personalization
- Suitable for Burial
- Living Memorial® Program
- Black Painted Finish
- Black Exterior Color
- Brushed Finish
- Limited Warranty

**NewPointe®**  
Constellation Collections

Batesville reserves the right to change or update any products (including, without limitation, features, attributes and descriptions) at any time without notice. While Batesville strives to maintain accurate product information and images both digitally and in print, (1) product changes may potentially result in the existence of outdated product information and (2) actual products delivered may contain slight design/color variations. Customers are encouraged to visit [Batesville.com](http://Batesville.com) to obtain the most current product information and specifications needed for purchase decisions

Vega Golden Onyx  
281890

**\$2,695**



## FEATURES:

- Constructed of Steel 20 ga.
- Ivory Velvet Interior
- Optional Decorative Kit Personalization
- Suitable for Burial
- Living Memorial® Program
- Burgundy Painted Finish
- Burgandy Exterior Color
- Brushed Finish
- Limited Warranty

**NewPointe®**  
Constellation Collections

Batesville reserves the right to change or update any products (including, without limitation, features, attributes and descriptions) at any time without notice. While Batesville strives to maintain accurate product information and images both digitally and in print, (1) product changes may potentially result in the existence of outdated product information and (2) actual products delivered may contain slight design/color variations. Customers are encouraged to visit [Batesville.com](http://Batesville.com) to obtain the most current product information and specifications needed for purchase decisions

Aquarius Ruby Rose  
281903

**\$2,595**



## FEATURES:

- Constructed of Pine Solids and Veneers
- Rosetan Crepe Interior
- Suitable for Burial or Cremation
- Living Memorial® Program
- Veneer Construction
- Brown Painted Finish
- Pecan Stain
- Medium Exterior Color
- Limited Warranty

**NewPointe®**  
Constellation Collections

Batesville reserves the right to change or update any products (including, without limitation, features, attributes and descriptions) at any time without notice. While Batesville strives to maintain accurate product information and images both digitally and in print, (1) product changes may potentially result in the existence of outdated product information and (2) actual products delivered may contain slight design/color variations. Customers are encouraged to visit [Batesville.com](http://Batesville.com) to obtain the most current product information and specifications needed for purchase decisions

Lynx Brown  
262858

**\$2,495**



## FEATURES:

- Constructed of Steel 20 ga.
- Light Blue Crepe Interior
- Suitable for Burial
- Living Memorial® Program
- Blue Painted Finish
- Blue Exterior Color
- Limited Warranty

**NewPointe®**  
Constellation Collections

Aries Blue  
234314

Batesville reserves the right to change or update any products (including, without limitation, features, attributes and descriptions) at any time without notice. While Batesville strives to maintain accurate product information and images both digitally and in print, (1) product changes may potentially result in the existence of outdated product information and (2) actual products delivered may contain slight design/color variations. Customers are encouraged to visit [Batesville.com](http://Batesville.com) to obtain the most current product information and specifications needed for purchase decisions

**\$2,495**



## FEATURES:

- Constructed of Steel 20 ga.
- Ivory Crepe Interior
- Suitable for Burial
- Living Memorial® Program
- White Painted Finish
- White Exterior Color
- Limited Warranty

**NewPointe®**  
Constellation Collections

Aries White  
234322

Batesville reserves the right to change or update any products (including, without limitation, features, attributes and descriptions) at any time without notice. While Batesville strives to maintain accurate product information and images both digitally and in print, (1) product changes may potentially result in the existence of outdated product information and (2) actual products delivered may contain slight design/color variations. Customers are encouraged to visit [Batesville.com](http://Batesville.com) to obtain the most current product information and specifications needed for purchase decisions

**\$2,495**



## FEATURES:

- Constructed of Steel 20 ga.
- Silver Crepe Interior
- Suitable for Burial
- Living Memorial® Program
- Silver Painted Finish
- Silver Exterior Color
- Limited Warranty

**NewPointe®**  
Constellation Collections

Pisces Silver  
257956

Batesville reserves the right to change or update any products (including, without limitation, features, attributes and descriptions) at any time without notice. While Batesville strives to maintain accurate product information and images both digitally and in print, (1) product changes may potentially result in the existence of outdated product information and (2) actual products delivered may contain slight design/color variations. Customers are encouraged to visit [Batesville.com](http://Batesville.com) to obtain the most current product information and specifications needed for purchase decisions

**\$2,395**



## FEATURES:

- Constructed of Pine Solids and Veneers
- Rosetan Crepe Interior
- Suitable for Burial or Cremation
- Living Memorial® Program
- Veneer Construction
- Brown Painted Finish
- Dark Pine Stain
- Dark Exterior Color
- Satin Finish
- Limited Warranty

**NewPointe®**  
Constellation Collections

Batesville reserves the right to change or update any products (including, without limitation, features, attributes and descriptions) at any time without notice. While Batesville strives to maintain accurate product information and images both digitally and in print, (1) product changes may potentially result in the existence of outdated product information and (2) actual products delivered may contain slight design/color variations. Customers are encouraged to visit [Batesville.com](http://Batesville.com) to obtain the most current product information and specifications needed for purchase decisions

Lyra Brown  
269152

**\$2,195**



## FEATURES:

- Constructed of Pine Solids and Veneers
- Rosetan Crepe Interior
- Suitable for Burial or Cremation
- Living Memorial® Program
- Veneer Construction
- Natural Painted Finish
- Light Exterior Color
- Satin Finish
- Limited Warranty

**NewPointe®**  
Constellation Collections

Batesville reserves the right to change or update any products (including, without limitation, features, attributes and descriptions) at any time without notice. While Batesville strives to maintain accurate product information and images both digitally and in print, (1) product changes may potentially result in the existence of outdated product information and (2) actual products delivered may contain slight design/color variations. Customers are encouraged to visit [Batesville.com](http://Batesville.com) to obtain the most current product information and specifications needed for purchase decisions

Lyra Natural  
269150

**\$2,195**



## FEATURES:

- Constructed of Steel Non-Gasketed
- Moss Pink Crepe Interior
- Optional Decorative Kit Personalization
- Suitable for Burial
- Living Memorial® Program
- Purple Painted Finish
- Violet Exterior Color
- Limited Warranty

**NewPointe®**  
Constellation Collections

Batesville reserves the right to change or update any products (including, without limitation, features, attributes and descriptions) at any time without notice. While Batesville strives to maintain accurate product information and images both digitally and in print, (1) product changes may potentially result in the existence of outdated product information and (2) actual products delivered may contain slight design/color variations. Customers are encouraged to visit [Batesville.com](http://Batesville.com) to obtain the most current product information and specifications needed for purchase decisions

Spectra Orchid  
258362

**\$2,095**



## FEATURES:

- Constructed of Steel Non-Gasketed
- Silver Crepe Interior
- Optional Decorative Kit Personalization
- Suitable for Burial
- Living Memorial® Program
- Black Painted Finish
- Black Exterior Color
- Limited Warranty

**NewPointe®**  
Constellation Collections

Batesville reserves the right to change or update any products (including, without limitation, features, attributes and descriptions) at any time without notice. While Batesville strives to maintain accurate product information and images both digitally and in print, (1) product changes may potentially result in the existence of outdated product information and (2) actual products delivered may contain slight design/color variations. Customers are encouraged to visit [Batesville.com](http://Batesville.com) to obtain the most current product information and specifications needed for purchase decisions

Spectra Black  
256354

**\$2,095**



## FEATURES:

- Constructed of Steel Non-Gasketed
- Ivory Crepe Interior
- Optional Decorative Kit Personalization
- Suitable for Burial
- Living Memorial® Program
- Silver Painted Finish
- Silver Exterior Color
- Limited Warranty

**NewPointe®**  
Constellation Collections

Batesville reserves the right to change or update any products (including, without limitation, features, attributes and descriptions) at any time without notice. While Batesville strives to maintain accurate product information and images both digitally and in print, (1) product changes may potentially result in the existence of outdated product information and (2) actual products delivered may contain slight design/color variations. Customers are encouraged to visit [Batesville.com](http://Batesville.com) to obtain the most current product information and specifications needed for purchase decisions

Spectra Silver  
221507

**\$2,095**



## FEATURES:

- Constructed of Steel Non-Gasketed
- Ivory Crepe Interior
- Suitable for Burial
- Living Memorial® Program
- White Painted Finish
- White Exterior Color
- Limited Warranty

**NewPointe®**  
Constellation Collections

Batesville reserves the right to change or update any products (including, without limitation, features, attributes and descriptions) at any time without notice. While Batesville strives to maintain accurate product information and images both digitally and in print, (1) product changes may potentially result in the existence of outdated product information and (2) actual products delivered may contain slight design/color variations. Customers are encouraged to visit [Batesville.com](http://Batesville.com) to obtain the most current product information and specifications needed for purchase decisions

Gemini White  
217383

**\$1,895**



## FEATURES:

- Constructed of Steel Non-Gasketed
- Rosetan Crepe Interior
- Suitable for Burial
- Living Memorial® Program
- Brown Painted Finish
- Brown Exterior Color
- Limited Warranty

**NewPointe®**  
Constellation Collections

Gemini Copper  
217387

Batesville reserves the right to change or update any products (including, without limitation, features, attributes and descriptions) at any time without notice. While Batesville strives to maintain accurate product information and images both digitally and in print, (1) product changes may potentially result in the existence of outdated product information and (2) actual products delivered may contain slight design/color variations. Customers are encouraged to visit [Batesville.com](http://Batesville.com) to obtain the most current product information and specifications needed for purchase decisions

**\$1,895**



## FEATURES:

- Constructed of Wood Composite (MDF)
- Ivory Crepe Interior
- Designed Specifically for Cremation
- Living Memorial® Program
- Printed Woodgrain Finish Exterior
- Medium Exterior Color
- Limited Warranty

**NewPointe®**  
Constellation Collections

Batesville reserves the right to change or update any products (including, without limitation, features, attributes and descriptions) at any time without notice. While Batesville strives to maintain accurate product information and images both digitally and in print, (1) product changes may potentially result in the existence of outdated product information and (2) actual products delivered may contain slight design/color variations. Customers are encouraged to visit [Batesville.com](http://Batesville.com) to obtain the most current product information and specifications needed for purchase decisions

Hadley Cremation Container  
279185

**\$1,695**



## FEATURES:

- Constructed of Steel Non-Gasketed
- Moss Pink Crepe Interior
- Suitable for Burial
- Living Memorial® Program
- White Painted Finish
- White Exterior Color
- Limited Warranty

**NewPointe®**  
Constellation Collections

Batesville reserves the right to change or update any products (including, without limitation, features, attributes and descriptions) at any time without notice. While Batesville strives to maintain accurate product information and images both digitally and in print, (1) product changes may potentially result in the existence of outdated product information and (2) actual products delivered may contain slight design/color variations. Customers are encouraged to visit [Batesville.com](http://Batesville.com) to obtain the most current product information and specifications needed for purchase decisions

Apollo White/Pink  
221505

**\$1,495**



## FEATURES:

- Constructed of Steel Non-Gasketed
- Ivory Crepe Interior
- Suitable for Burial
- Living Memorial® Program
- Silver Painted Finish
- Silver Exterior Color
- Limited Warranty

**NewPointe®**  
Constellation Collections

Batesville reserves the right to change or update any products (including, without limitation, features, attributes and descriptions) at any time without notice. While Batesville strives to maintain accurate product information and images both digitally and in print, (1) product changes may potentially result in the existence of outdated product information and (2) actual products delivered may contain slight design/color variations. Customers are encouraged to visit [Batesville.com](http://Batesville.com) to obtain the most current product information and specifications needed for purchase decisions

Apollo Silver  
221502

**\$1,495**



## FEATURES:

- Constructed of Steel Non-Gasketed
- Light Blue Crepe Interior
- Suitable for Burial
- Living Memorial® Program
- Blue Painted Finish
- Blue Exterior Color
- Limited Warranty

**NewPointe®**  
Constellation Collections

Apollo Blue  
221503

Batesville reserves the right to change or update any products (including, without limitation, features, attributes and descriptions) at any time without notice. While Batesville strives to maintain accurate product information and images both digitally and in print, (1) product changes may potentially result in the existence of outdated product information and (2) actual products delivered may contain slight design/color variations. Customers are encouraged to visit [Batesville.com](http://Batesville.com) to obtain the most current product information and specifications needed for purchase decisions

**\$1,495**



## FEATURES:

- Constructed of Cloth Covered Fiberboard
- Ivory Crepe Interior
- Oversize Burial Vault Required
- Suitable for Burial or Cremation
- Living Memorial® Program
- Grey Exterior
- Grey Exterior Color
- Memorial Record® System



Batesville reserves the right to change or update any products (including, without limitation, features, attributes and descriptions) at any time without notice. While Batesville strives to maintain accurate product information and images both digitally and in print, (1) product changes may potentially result in the existence of outdated product information and (2) actual products delivered may contain slight design/color variations. Customers are encouraged to visit [Batesville.com](http://Batesville.com) to obtain the most current product information and specifications needed for purchase decisions

Grey Doeskin Oversize  
147972

**\$1,495**



## FEATURES:

- Constructed of Wood Composite (MDF)
- Ivory Crepe Interior
- Designed Specifically for Cremation
- Living Memorial® Program
- Printed Woodgrain Finish Exterior
- Light Exterior Color
- Limited Warranty

**NewPointe®**  
Constellation Collections

Batesville reserves the right to change or update any products (including, without limitation, features, attributes and descriptions) at any time without notice. While Batesville strives to maintain accurate product information and images both digitally and in print, (1) product changes may potentially result in the existence of outdated product information and (2) actual products delivered may contain slight design/color variations. Customers are encouraged to visit [Batesville.com](http://Batesville.com) to obtain the most current product information and specifications needed for purchase decisions

Novato Cremation Container  
279183

**\$1,195**



## FEATURES:

- Constructed of Oak Solid
- Rosetan Crepe Interior
- Designed Specifically for Cremation
- Living Memorial® Program
- Medium Exterior Color
- Accepts Decorative Casket Panel



Batesville reserves the right to change or update any products (including, without limitation, features, attributes and descriptions) at any time without notice. While Batesville strives to maintain accurate product information and images both digitally and in print, (1) product changes may potentially result in the existence of outdated product information and (2) actual products delivered may contain slight design/color variations. Customers are encouraged to visit [Batesville.com](http://Batesville.com) to obtain the most current product information and specifications needed for purchase decisions

Brockton Rental  
253467

**\$1,195**



## FEATURES:

- Constructed of Cloth Covered Fiberboard
- Ivory Crepe Interior
- Suitable for Burial or Cremation
- Living Memorial® Program
- Grey Exterior
- Grey Exterior Color
- Memorial Record® System



Batesville reserves the right to change or update any products (including, without limitation, features, attributes and descriptions) at any time without notice. While Batesville strives to maintain accurate product information and images both digitally and in print, (1) product changes may potentially result in the existence of outdated product information and (2) actual products delivered may contain slight design/color variations. Customers are encouraged to visit [Batesville.com](http://Batesville.com) to obtain the most current product information and specifications needed for purchase decisions

Grey Doeskin Oval Cut Top  
147970

**\$1,095**

## FEATURES:

- Constructed of Cardboard
- Ivory Crepe Interior
- Designed Specifically for Cremation
- Living Memorial® Program
- Printed Woodgrain Finish Exterior
- Brown Exterior Color



Batesville reserves the right to change or update any products (including, without limitation, features, attributes and descriptions) at any time without notice. While Batesville strives to maintain accurate product information and images both digitally and in print, (1) product changes may potentially result in the existence of outdated product information and (2) actual products delivered may contain slight design/color variations. Customers are encouraged to visit [Batesville.com](http://Batesville.com) to obtain the most current product information and specifications needed for purchase decisions

Caden Alternative Container  
252322

**\$695**

## FEATURES:

- Constructed of Wood Composite (MDF)
- No Fabric Interior
- Designed Specifically for Cremation
- Living Memorial® Program
- Printed Woodgrain Finish Exterior
- Brown Exterior Color



Batesville reserves the right to change or update any products (including, without limitation, features, attributes and descriptions) at any time without notice. While Batesville strives to maintain accurate product information and images both digitally and in print, (1) product changes may potentially result in the existence of outdated product information and (2) actual products delivered may contain slight design/color variations. Customers are encouraged to visit [Batesville.com](http://Batesville.com) to obtain the most current product information and specifications needed for purchase decisions

Stratus Alternative Container  
177129

**\$695**



## FEATURES:

- Constructed of Wood Composite (MDF)
- No Fabric Interior
- Designed Specifically for Cremation
- Living Memorial® Program
- Printed Woodgrain Finish Exterior
- Brown Exterior Color



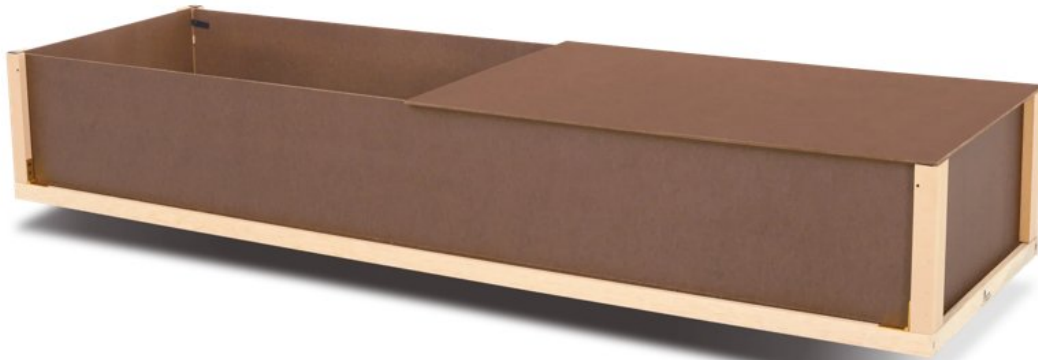
Batesville reserves the right to change or update any products (including, without limitation, features, attributes and descriptions) at any time without notice. While Batesville strives to maintain accurate product information and images both digitally and in print, (1) product changes may potentially result in the existence of outdated product information and (2) actual products delivered may contain slight design/color variations. Customers are encouraged to visit [Batesville.com](http://Batesville.com) to obtain the most current product information and specifications needed for purchase decisions

Standard Alternative Container  
145232

**\$490**

## FEATURES:

- Constructed of Wood Composite (MDF)
- No Fabric Interior
- Designed Specifically for Cremation
- Living Memorial® Program
- Dark Brown Exterior
- Brown Exterior Color



Batesville reserves the right to change or update any products (including, without limitation, features, attributes and descriptions) at any time without notice. While Batesville strives to maintain accurate product information and images both digitally and in print, (1) product changes may potentially result in the existence of outdated product information and (2) actual products delivered may contain slight design/color variations. Customers are encouraged to visit [Batesville.com](http://Batesville.com) to obtain the most current product information and specifications needed for purchase decisions

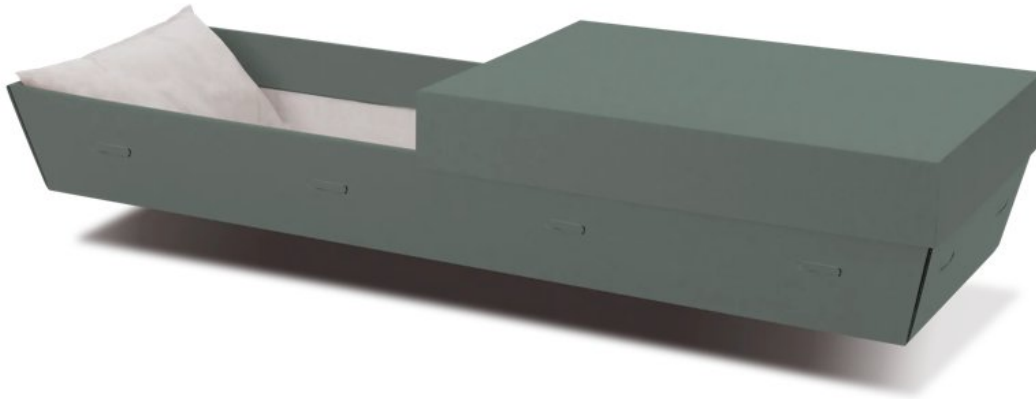
---

Standard Brown Alternative Container  
177130

**\$490**

## FEATURES:

- Constructed of Cardboard
- No Fabric Interior
- Designed Specifically for Cremation
- Living Memorial® Program
- Green Exterior
- Green Exterior Color



Batesville reserves the right to change or update any products (including, without limitation, features, attributes and descriptions) at any time without notice. While Batesville strives to maintain accurate product information and images both digitally and in print, (1) product changes may potentially result in the existence of outdated product information and (2) actual products delivered may contain slight design/color variations. Customers are encouraged to visit [Batesville.com](http://Batesville.com) to obtain the most current product information and specifications needed for purchase decisions

Baden Alternative Container  
252321

**\$390**



## FEATURES:

- Constructed of Cardboard
- No Fabric Interior
- Designed Specifically for Cremation
- Living Memorial® Program
- Brown Exterior
- Brown Exterior Color



Batesville reserves the right to change or update any products (including, without limitation, features, attributes and descriptions) at any time without notice. While Batesville strives to maintain accurate product information and images both digitally and in print, (1) product changes may potentially result in the existence of outdated product information and (2) actual products delivered may contain slight design/color variations. Customers are encouraged to visit [Batesville.com](http://Batesville.com) to obtain the most current product information and specifications needed for purchase decisions

---

Minimum Cardboard Alt. Container  
253870

**\$95**