

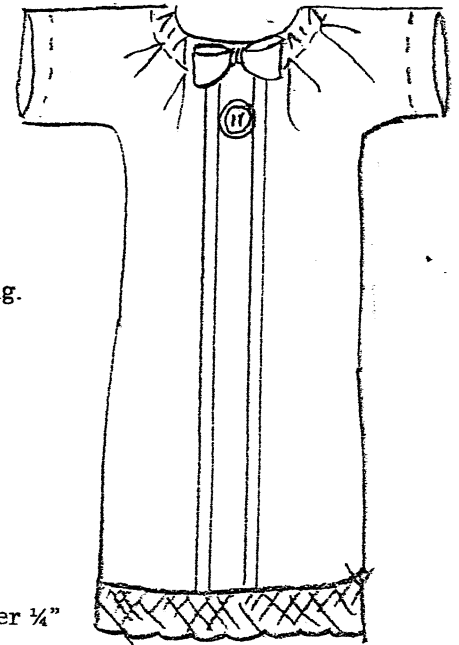
# Simple Burial Gown less than 1 lb

Burial gown opens all the way down the back.

Optional lace trim or pin tucks may be sewn down center front.

**SUGGESTED FABRICS:** Any thin opaque fabric that doesn't ravel easily: broadcloth, faille, knit flannel, or sateen.

**NOTE:** all seams are 1/4 inch.



- 1 **CUT OUT** gown and neck facing. Mark center back line on gown and facing.  
(The easiest way to mark it is to press a crease)

**OPTIONAL CENTER FRONT TRIM:** mark (or press) center front line.

**FOR GIRL:** Sew lace trim down center front

**FOR BOY:** Sew two pin tucks 1/2 to 3/4 inches apart. One on each side of the center line to look like a shirt front.

You may sew some rows of machine embroidery parallel to the pin tucks like a guayabera shirt.

- 2 **HEM SLEEVES OR MAKE OPTIONAL LACE CASINGS:**

**TO HEM:** Fold sleeve edge 1/8" to the inside and press. Then fold another 1/4" to the inside and press to make a 1/4" hem. Sew hem on sleeve.

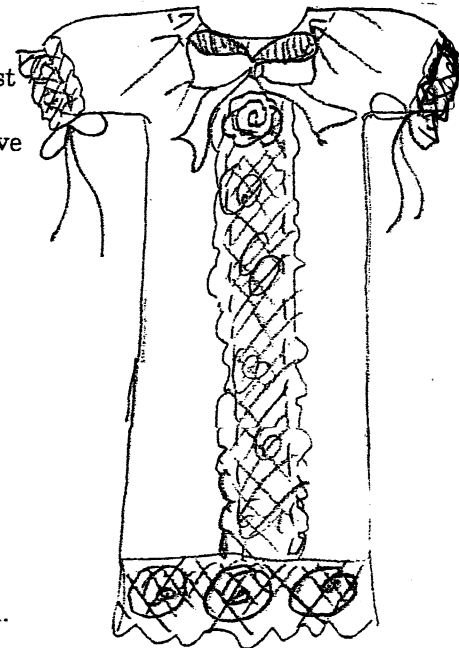
**TO MAKE OPTIONAL LACE CASINGS ON ENDS OF SLEEVES:**

With wrong sides together, place lace over edge of sleeve with the scalloped side inward and the straight side of lace barely overlapping the cut edge of sleeve ... it seems backwards, but it will work out.

Sew lace to sleeve 1/4" from sleeve edge.

With right side of fabric up, flip the lace so the scalloped edge extends past the sleeve. Press flat. Now it looks right.

Form a scant 1/4" casing by sewing the straight edge of the lace to the sleeve with a very narrow zig-zag stitch.



- 3 **NECK FACING:** Finish outside edge of facing with zig-zag stitch.

Place facing on gown with right sides together, matching center back.

Sew facing to gown with 1/4" seam allowance.

Trim and clip seam allowance. Turn right side out and press.

- 4 **CENTER BACK:** Cut all the way down the center back.

Turn facing up. Fold a narrow hem all the way down each side of the center back of the gown and facing. Press to inside and sew.

- 5 **NECK CASING:** Fold facing back down. Sew around facing 1/4" from neckline to form a casing.

- 6 **SIDE SEAMS:** Pin side seams. Sew side seams 1/4" from edge. Clip at underarm. Trim seams and finish with zigzag stitch or fray check. Press.

- 7 **FINISHING:** Sew lace to bottom of gown. Insert narrow ribbon into neckline casing. Tack at center front and have ends come out at center back. Leave ends 5 or 6 inches long. Gather neckline and tie ribbon at the back.  
**OPTIONAL:** Insert ribbon in sleeve casing starting and ending at underarm seam. Leave ends hanging down 5 or 6 inches. Tack ribbon with a few stitches at the top of sleeve so it won't pull out. Gather sleeve and tie ribbon at the bottom.

- 8 **DECORATION:**

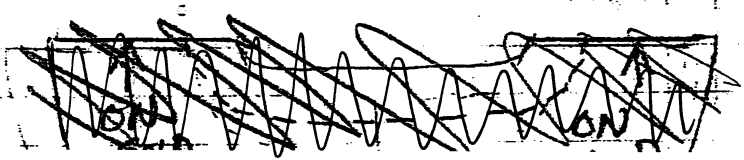
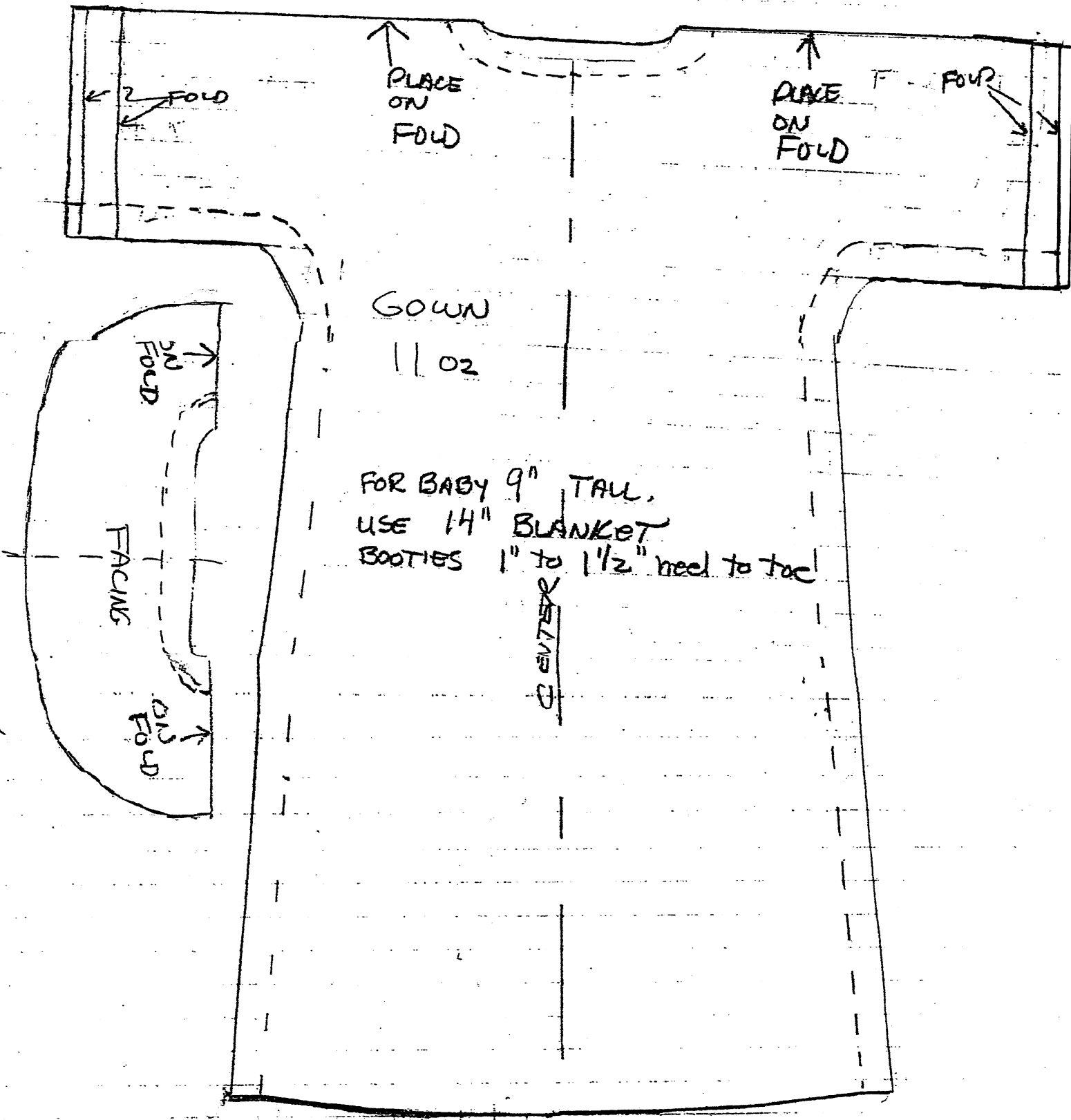
**BOYS:** Make a ribbon 'bow tie' and sew it to the center front.

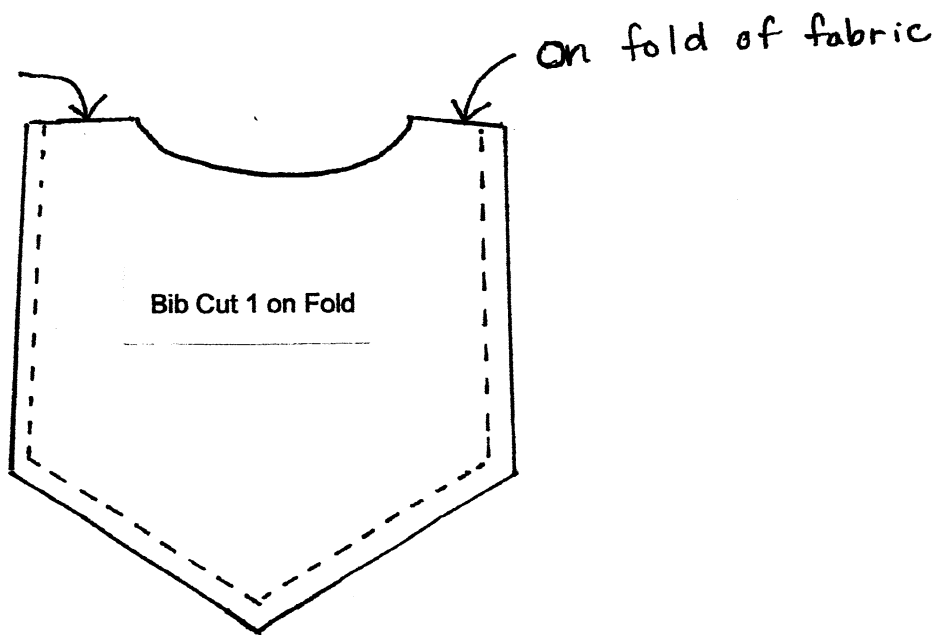
You may also sew a tiny shirt button below it.

**GIRLS:** Trim the neckline with a bow and/or silk rose.

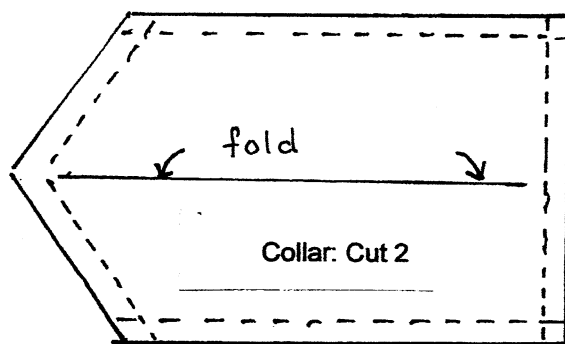
# SIMPLE BURIAL GOWN

'LESS THAN 1 LB'

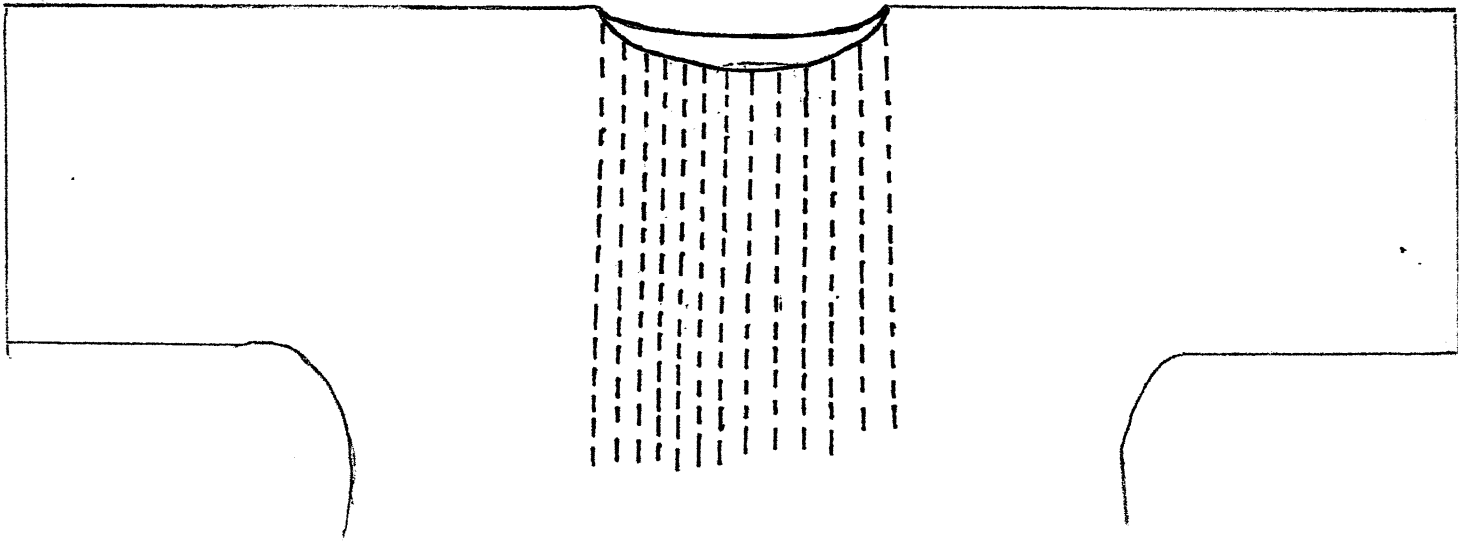




Bib front option: Cut pattern on fold of fabric, right side in. Sew straight edges, trim corners and pull to right side through neck opening. Press flat. Align with gown at neckline, raw edges together. Topstitch into place along straight edges. Finish with collar and a bow tie fashioned from a piece of ribbon . Buttons can be sewn down center front.



Collar: cut 2  
 Fold right sides together. Stitch front end. Stitch back end. Repeat on other collar piece. Trim corners and turn to right side. Press. Topstitch close to edges if desired. Stay stitch raw edges together. Align with neckline on gown. Sew in place. Add facing.



**BOY fashion adaptations to SIMPLE BURIAL GOWN 11 oz. size by Beth Cruse**

**Cut out gown following instructions. Top stitching can be added using a contrast color thread. Use illustration as a guide.**

**Repeat topstitching detail above hem: double row.**

**If collar is desired sew to neckline before facing.**