

HydraBric® III Standard Finish 8cm



APPEARANCE

Edge Detail - Microbevel
Surface Texture - Standard Smooth

TECHNOLOGIES

Permeable
Face Texture - Standard Finish

TECHNICAL INFORMATION

Conforms to ASTM C936
Eligible for LEED v4.1 credits

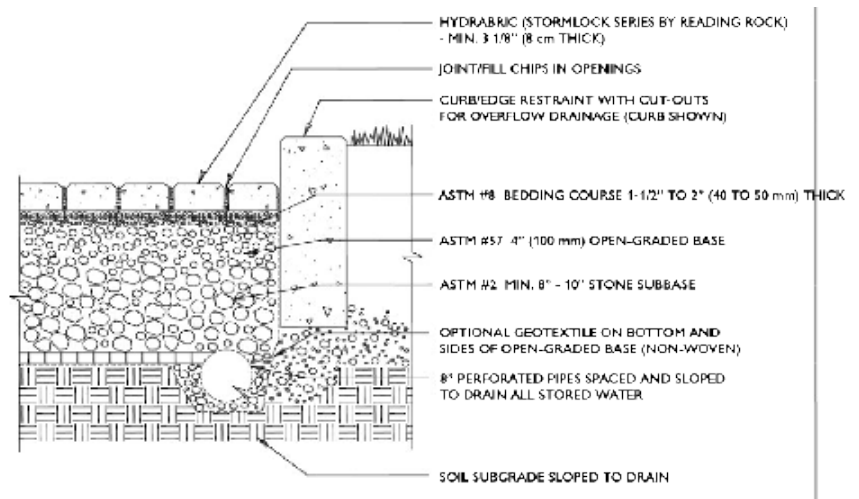
APPLICATIONS

Pedestrian
Residential Vehicular
Commercial Vehicular

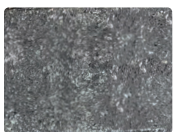
INSTALLATION METHODS

Hand
Machine

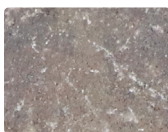
Product	Pieces / Sq. Ft. Per Layer / Pallet	Layers / Sq. Ft. Per Pallet
HydraBric III <i>sold by the pallet</i>	288 full pcs. per pallet; 84 half pcs. per pallet	6 layers/pallet = 84 sq. ft.
Weight Per Pallet / Sq. Ft.	Sq. Ft. per Drop	Joint Spacing
2,780.4 lbs./pallet 33.1 lbs./sq. ft.	14.01 sq. ft.	12.5 mm
Void Ratio	Infiltration Rate	ADA Compliant
14.10%	750 Average inches per hour	yes



NOTE: SUBBASE DEPTH MAY VARY PER DESIGN. FOR STRUCTURAL INTEGRITY, 8" - 10" MINIMUM IS RECOMMENDED. PLEASE REFER TO DESIGNER'S SPECIFICATION.



GRANITE (stock)



CIMARRON



RIVERSIDE



FULL
(H) 3 5/8" x (D) 3 3/4" x (L) 8"



HALF
(H) 2 5/8" x (D) 3 3/4" x (L) 3 3/4"

PATTERN (pallet)

