

Halfmark Elite Smooth 6cm



Product	Pieces / Sq. Ft. Per Layer / Pallet	Layers / Sq. Ft. Per Pallet	Weight Per Pallet / Sq. Ft.
Halfmark Elite <i>sold by the layer</i>	13.33 sq. ft./layer 60 pcs./layer	9 layers/pallet = 119.97 sq. ft.	3,285 lbs./pallet 27.4 lbs./sq. ft.

APPEARANCE

Edge Detail - Chamfer
Surface Texture - Smooth
Joint Spacing - 2.2 mm

TECHNOLOGIES

Face Texture - Elite Face-Mix Technology

TECHNICAL INFORMATION

Conforms to ASTM C936
Eligible for LEED v4.1 credits

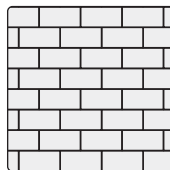
APPLICATIONS

Pedestrian
Residential Vehicular

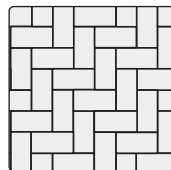
INSTALLATION METHODS

Hand

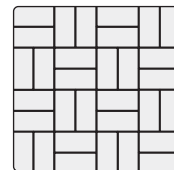
PATTERNS



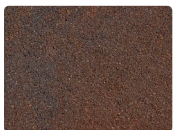
RUNNING BOND



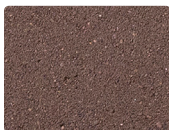
HERRINGBONE



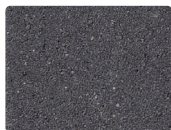
BASKET WEAVE



BURNT RED



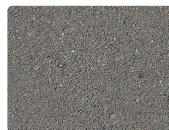
CHOCOLATE



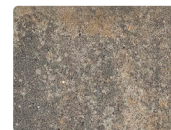
COAL



HAZELNUT



IRON



MESQUITE



PEARL



HALFMARK
(H) 2 $\frac{3}{8}$ " x (D) 4" x (L) 8"

Reading Rock recommends using a roller compactor on PaverLock Elite pavers.



Reading Rock, Inc. ♦ 800.482.6466