

ArchiSlab™ Elite Smooth 6cm



Product	Pieces / Sq. Ft. Per Layer / Pallet	Layers / Sq. Ft. Per Pallet	Weight Per Pallet / Sq. Ft.
ArchiSlab Elite <i>sold by the each</i>	16 sq. ft. per layer 4 pcs./layer	8 layers/pallet = 128 sq. ft.	3,590 lbs./pallet 28 lbs./sq. ft.
ArchiSlab XL (and with with False Joint) <i>sold by the each</i>	12 sq. ft. per layer 2 pcs./layer	8 layers/pallet = 96 sq. ft.	2,693 lbs/pallet 28 lbs./sq. ft.

APPEARANCE

Edge Detail - Microbevel
Surface Texture - Smooth
Joint Spacing - 0 mm

TECHNOLOGIES

Face Texture - Elite Face-Mix Technology

Colors	Reflectance
Misty Grey	SRI 39
Pearl	SRI 55
Sea Shell	SRI 44

TECHNICAL INFORMATION

Conforms to ASTM C1782
Eligible for LEED v4.1 credits

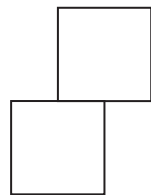
APPLICATIONS

Pedestrian
Pedestal Set / Rooftop

INSTALLATION METHODS

Hand
Vacuum

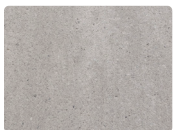
PATTERNS



RUNNING BOND



STACKED BOND



ASHEN



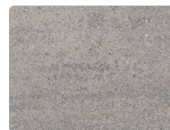
MISTY GREY



PEARL



SEA SHELL



COASTAL GREY



ARCHISLAB
(H) 2³/₈" x (D) 24" x (L) 24"



ARCHISLAB XL
(H) 2³/₈" x (D) 24" x (L) 36"



ARCHISLAB XL (with False Joint to complement ArchiSlab XL)
(H) 2³/₈" x (D) 24" x (L) 36"

Reading Rock recommends using a roller compactor on PaverLock Elite pavers.



Reading Rock, Inc. ♦ 800.482.6466