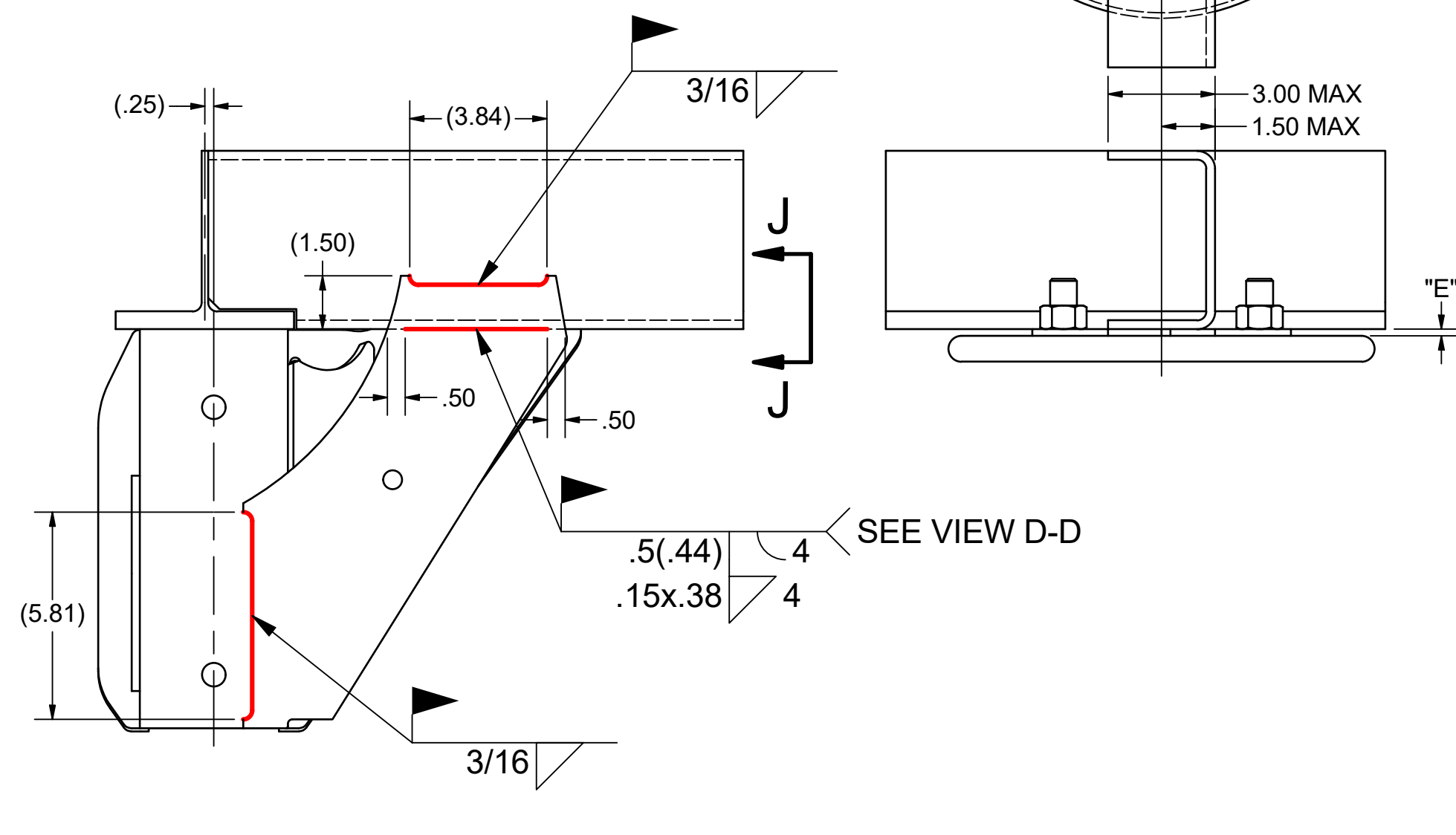
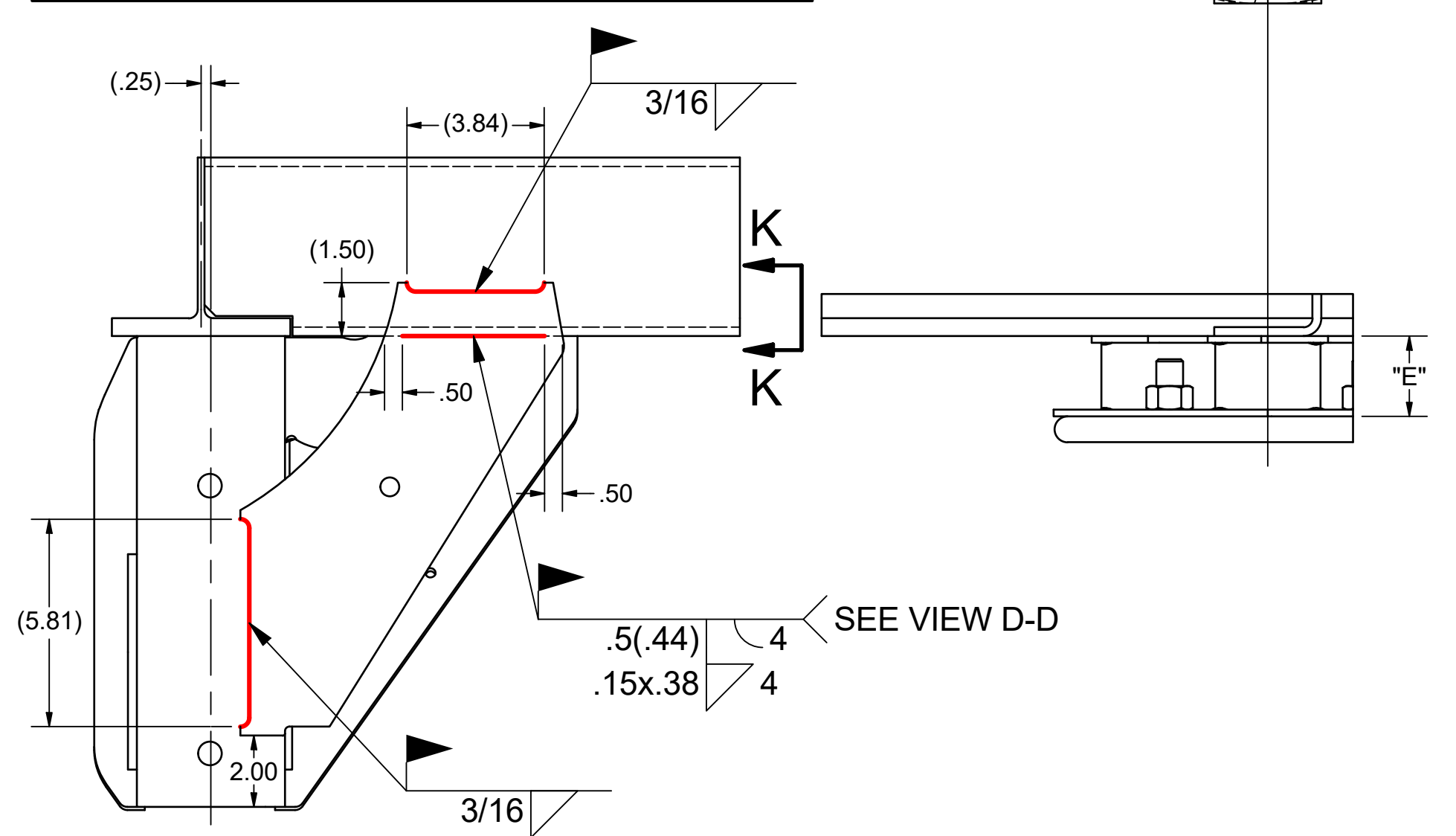


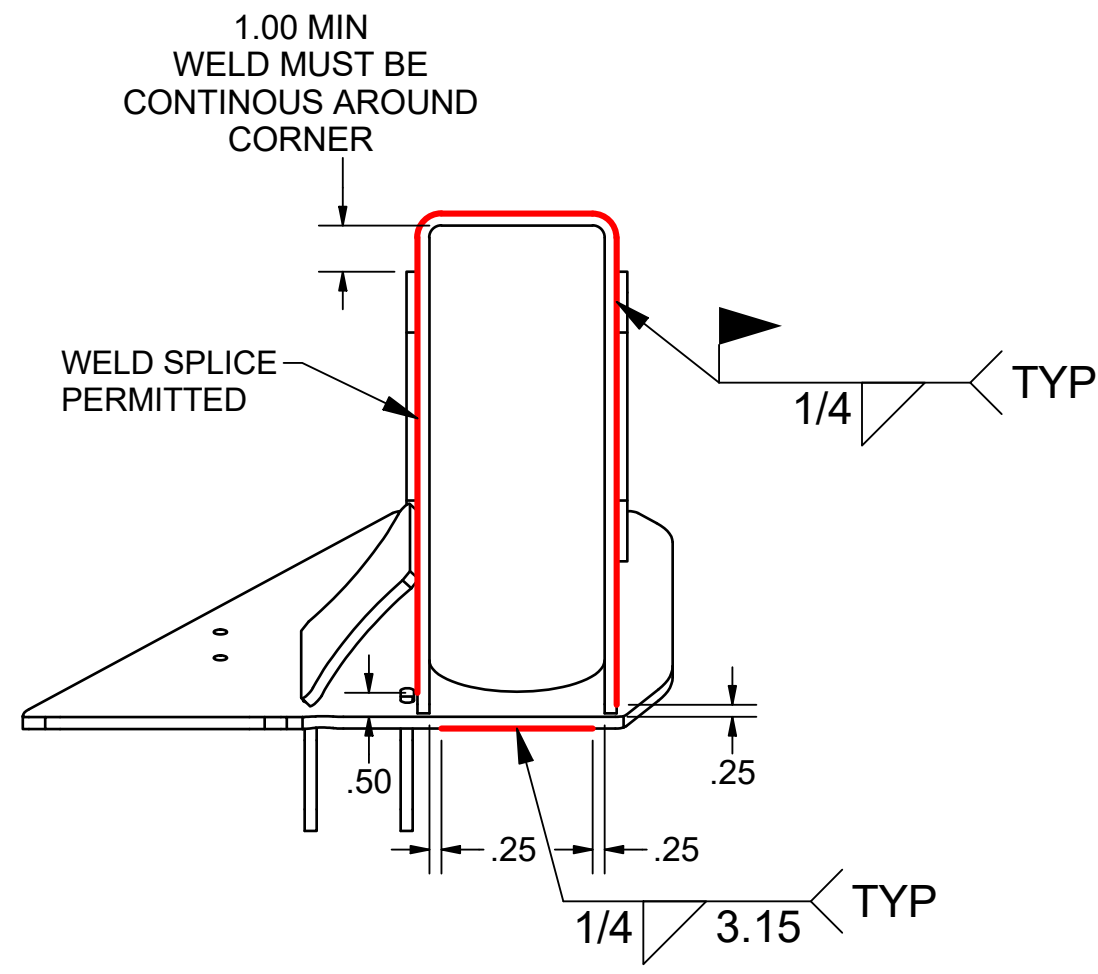
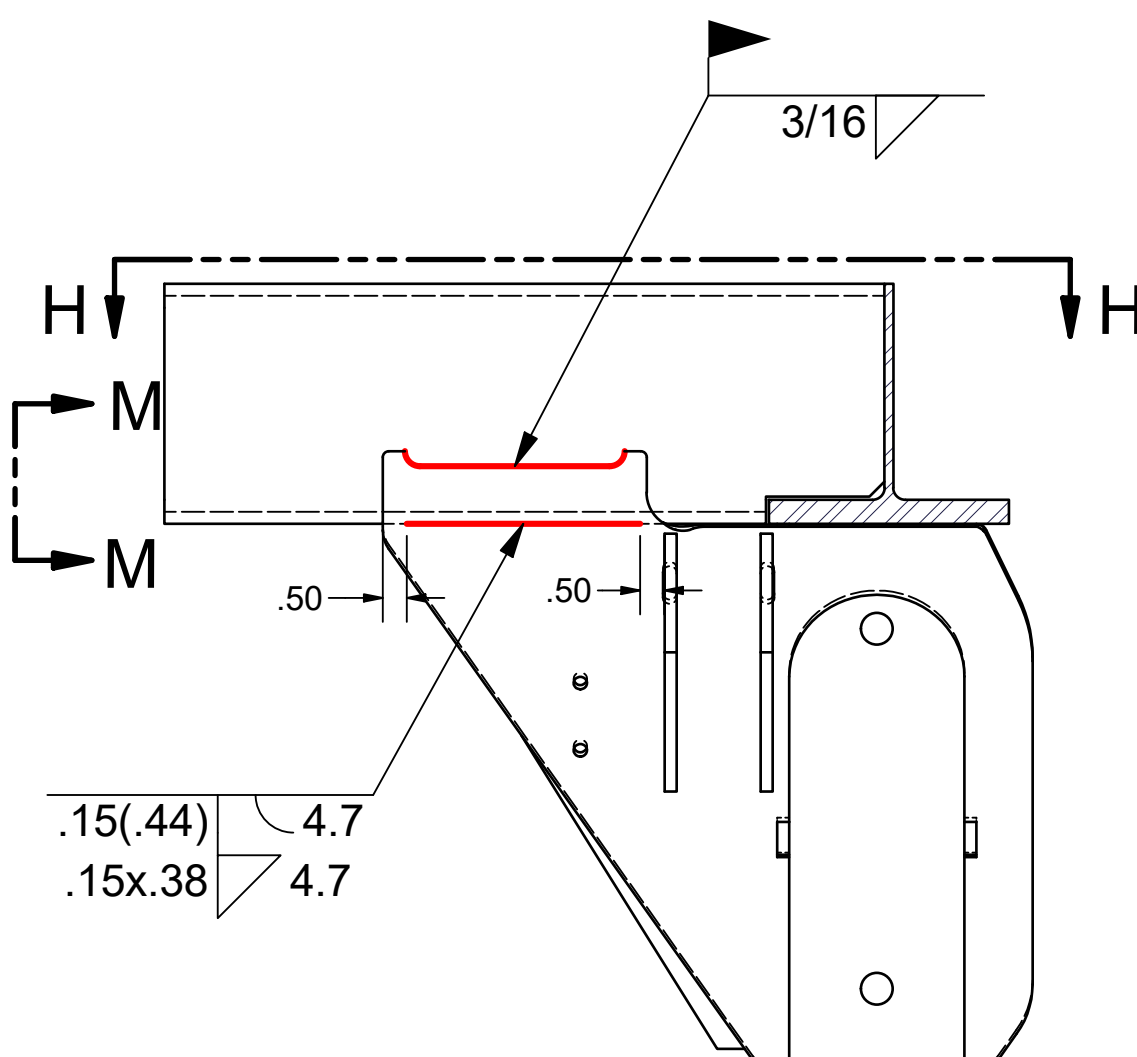
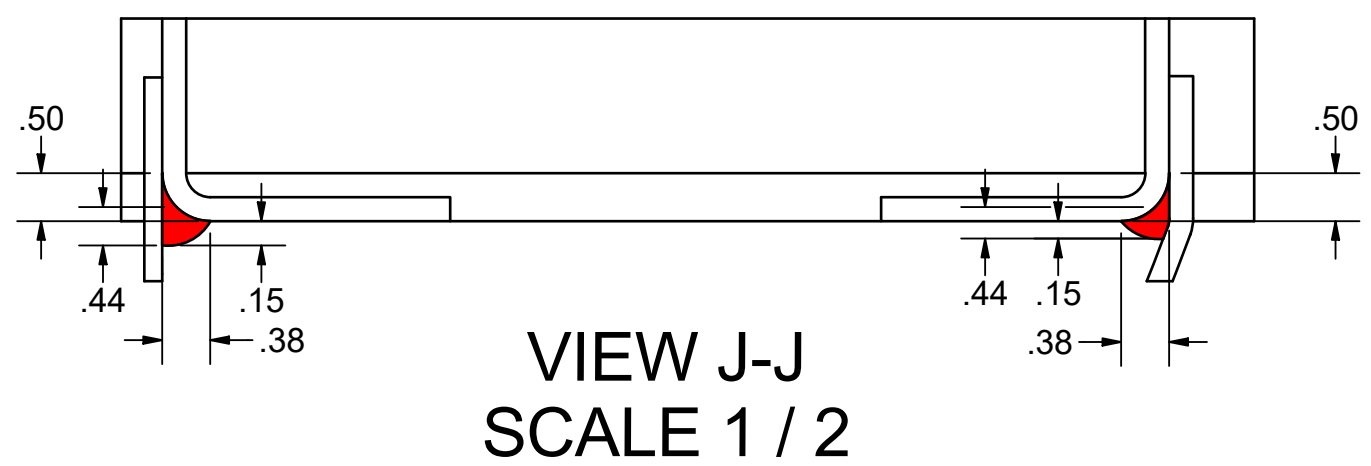
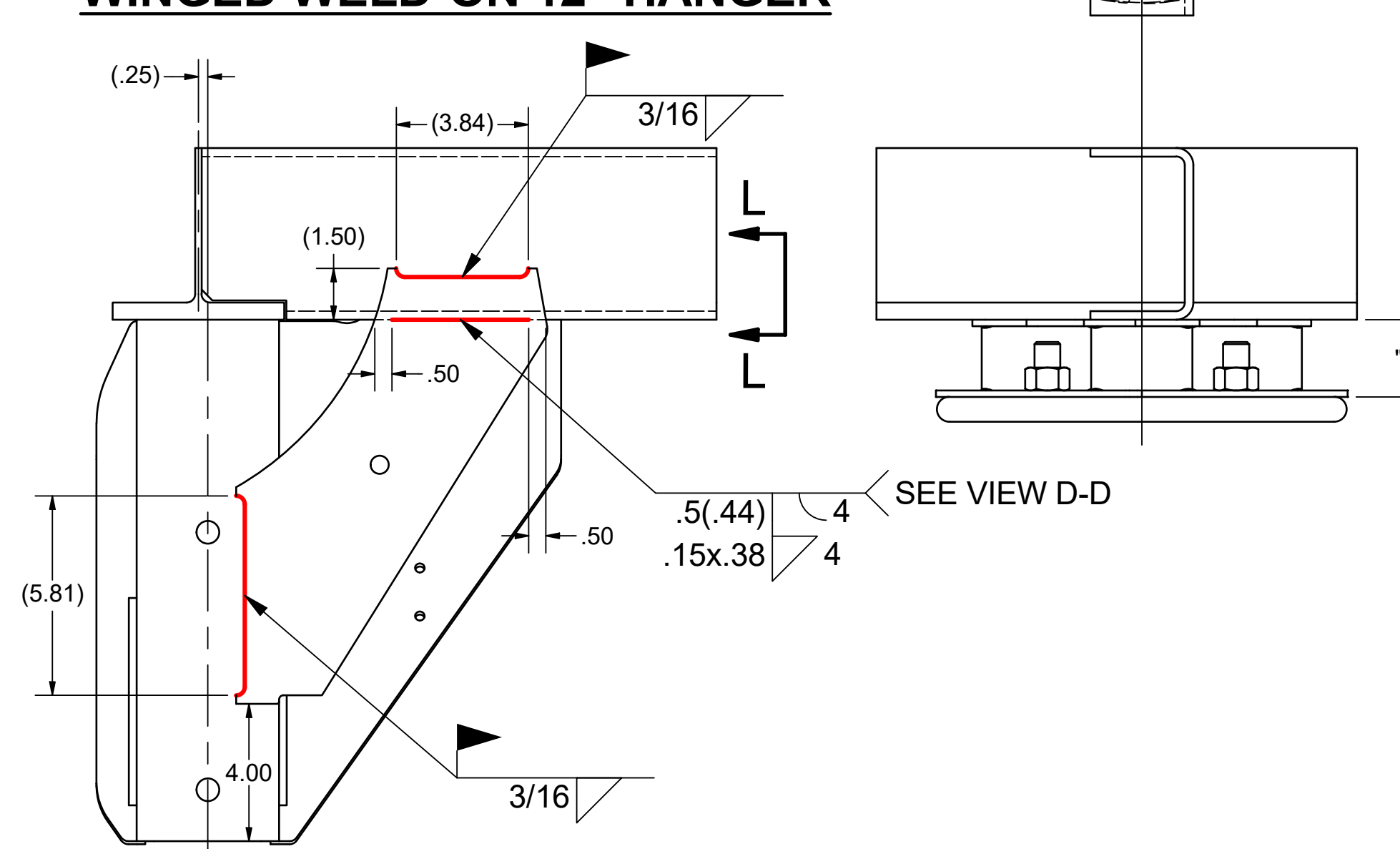
WINGED WELD-ON 8" HANGER



WINGED WELD-ON 10" HANGER



WINGED WELD-ON 12" HANGER



DCN#	0.1	UPDATED BOM (TOWER BOLT AND LOWER SHOCK BOLT)	4/28/18	JPS	CHK	APP
DCN#	REV	REVISION DESCRIPTION	DATE	BY	CHK	APP
DRAFTSMAN: DWALKER	12/11/2017	TITLE: WELDING NOTES SHEET				
CHECKED: CHK		CUSH BigFoot Narrow-hgr TOPMOUNT WELD-ON WINGED FRAME HANGER				
RELEASED: APP		1.5" TOWER, 14"-15.5" RH				
WEIGHT: N/A		Shown: 43.5" HANGER CENTERS, 77.5" TRACK				
MATERIAL:						
All of the Information shown herein is the intellectual property of Cush Corp and is submitted only on a confidential basis. The recipient agrees that no disclosure of this information will be made to a third party without written consent of Cush Corp.			TOLERANCE UNLESS OTHERWISE STATED: XX = +/- .002 FRACTIONS = +/- 1/16 XXX = +/- .001 ANGLES = +/- 1°			
PROJECT NO:	17116	SHEET: 6 OF 8	SCALE: A-SIZE: NTS B-SIZE: 1/X D-SIZE: 1/6	REV: 0.1	DRAWING(PART) NO: CBNT23Wx-x (Charted)	

