



**Crawford**  
International

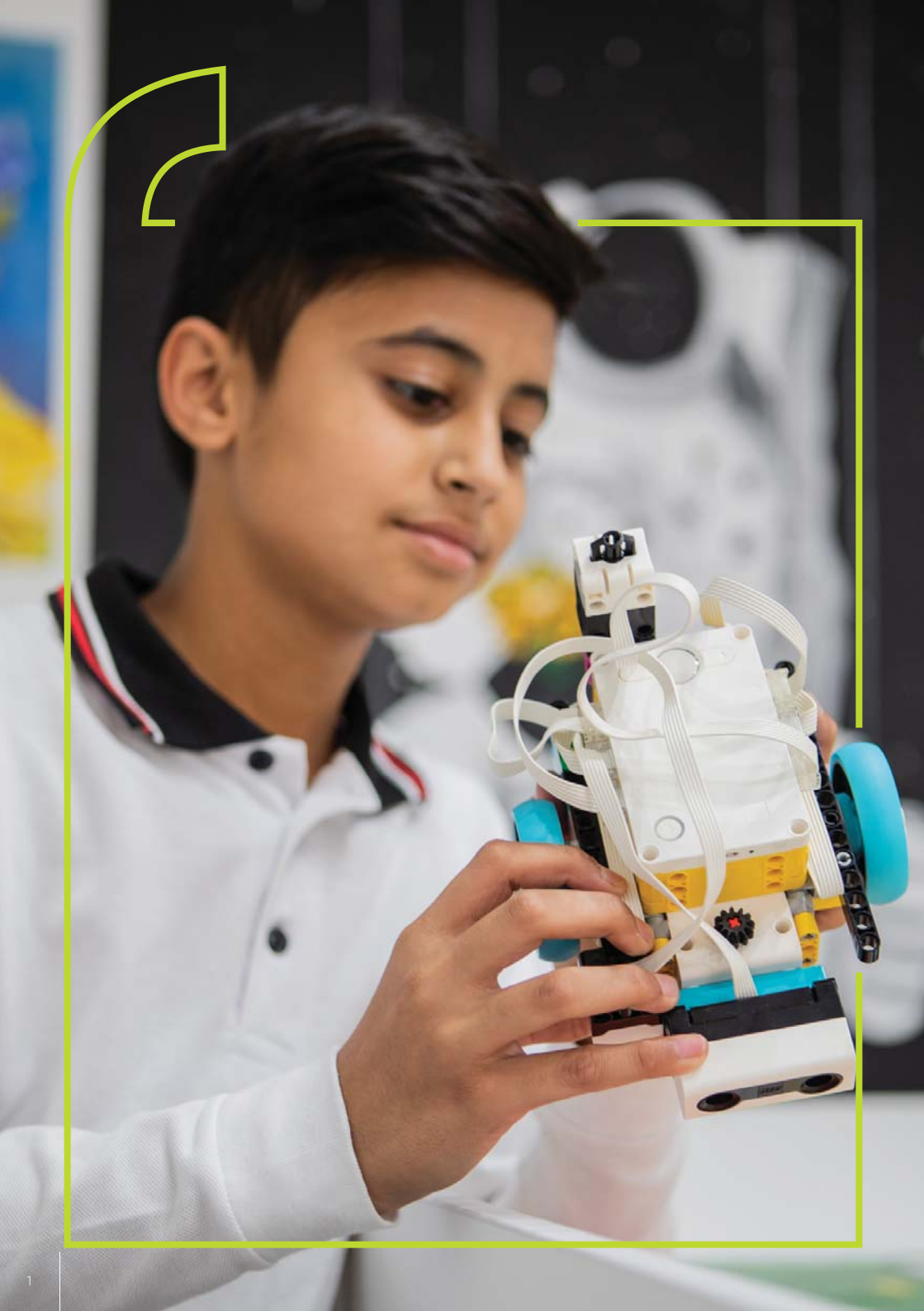
# Your school of voice and choice



# Contents

About Crawford International	2
Crawfordology	3
Our Value Proposition	5
International Baccalaureate	7
Academic Overview	9
Mentorship Framework	11
Crawford International Pre-Primary and Preparatory	13
Crawford International College	17
Assessments and Benchmarking	19
Sport	20
Cultural Offering	23
Co-Curricular Activities	25
Adventure Club/Aftercare	25
Multiforms (Uniforms)	26
Admissions	27





# About Crawford International

The first Crawford School opened its doors in Killarney, Johannesburg, in 1993. Today, the Crawford collection of schools constitute the largest single private school organisation in South Africa. The group now boasts 19 schools known for their future-focused, innovative approach to education.

## Every Child a Masterpiece

At Crawford International, we encourage our students to become empowered, curious young people who choose to make a difference in the world around them.

Our learning community embraces student agency where individuals take responsibility for their personal and academic success. We acknowledge effort and achievement on every front, and are invested in discovering the talents in every student because we believe every child is a masterpiece.

## Every Teacher a Professional

At Crawford International, we select and continuously develop our teachers to inspire, encourage and engage with our students throughout their learning journey. Our approaches to teaching and learning are continually aligned with international conversations and practices to ensure that our academic offering remains innovative and relevant.

## Participation as Leaders, Teams, and Individuals

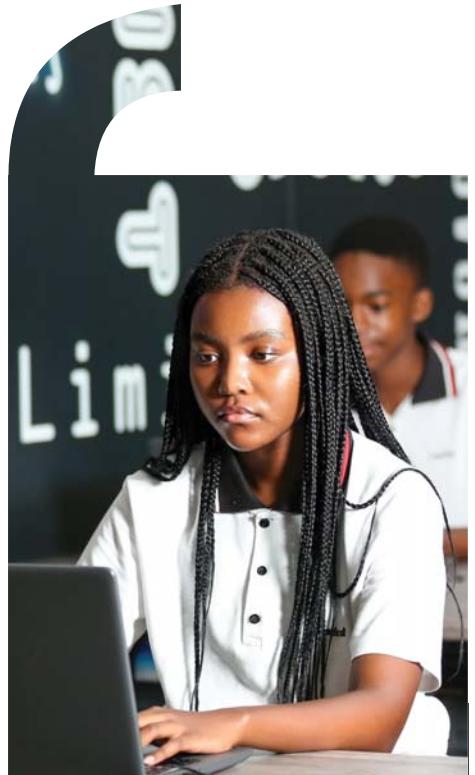
We provide a full spectrum of experiences and opportunities to enrich and expand students' personal interests and aspirations. We develop leadership capabilities through various sports, cultural activities and additional events taking place on a competitive, collaborative and/or social level.

## Our Philosophy

We implement a Crawfordology philosophy, which is internationally minded and respects each individual's needs, rights and dignity; and is centered on taking action to make the world around them a better place.

## ADvTECH Schools Group

Crawford International is part of the Schools Division of the ADvTECH Group, a JSE-listed company. Being part of a bigger group ensures ongoing investment, financial stability, efficient online systems and academic excellence.





# Crawfordology

At Crawford International, we implement a caring and empathetic philosophy that recognises each student's needs, rights and dignity.

## A Student-Focused Philosophy

We believe in mutual respect and a student-focused educational philosophy. Our Teaching and Learning Policy adapts to the students' needs by finding and creating different spaces in which every student is included and valued. At Crawford International, we encourage students to exercise agency through voice and choice. We believe students should be free to share their thoughts, perspectives, ideas, and confidently display who they are as the changemakers of tomorrow.

The simple secret to Crawford International's success is our teachers, who reach out, encourage, and mentor our students. Our teachers believe in their students, and our students trust, respect, and value their teachers. Crawford International teachers promote an inclusive classroom in which all students feel equally valued despite their diverse backgrounds.

At Crawford International, our student-centered approach focuses on wellbeing, motivation and inspiration. This is central to our mentorship programme, which provides guidance and encouragement to become confident and balanced individuals.

## Learning Community

Our Crawford International learning community recognises that education is a social endeavour

benefiting all its members. This means that a positive and nurturing environment exists in our schools, where individuality and mutual respect are promoted.

An inclusive and supportive learning community:

- lives peacefully together by engaging with the different ways of knowing and being;
- prioritises people and relationships; and
- assumes shared responsibility for learning, and the health and wellbeing of all its members.

Everyone in the learning community has agency, sees themselves as contributors to the community's strength and success, and takes action to effect change.

## A Commitment to Respect

Students from Grade 4 to 12 are required to sign our Code of Conduct which guides and defines the relationship between the school, its students and families.

The philosophy of a commitment to respect forms the basis of this Code of Conduct. In line with this philosophy, mature and dignified interactions are expected at all times.

Individuality and initiative are encouraged within these guidelines, leading to understanding the impact on fellow students, teachers and the broader learning community.

## Becoming Changemakers

Education at Crawford International is an evolving, engaging, and innovative process that requires various approaches to the teaching and learning taking place in the classroom. The students' understanding is extended and enhanced by the learning being connected across subjects, and being authentically linked to real-life situations and contexts.

We aspire for our students to become 'changemakers'.

Changemakers are:

- Open-minded with a positive perspective
- Curious and creative problem-solvers
- Doers, with ambition and drive
- Engaging communicators
- Risk-takers with confidence and courage

As 'changemakers', we aspire for our students to be internationally-minded, where they see themselves connected to local and global communities. Their personal attributes and behaviours provide skills and understanding, including respect, inclusion, and diversity in a globally connected world.





# Our **Value Proposition**

We are an international school that provides your child with an academically progressive, **future-focused** educational offering that is both **locally and globally** relevant. We do this by giving students **voice and choice** and providing a **personalised learning journey**, ultimately giving Crawford International students a globally competitive edge.



## How we deliver on this promise:

### **Committing to our academic offering by:**

- Retaining our International Baccalaureate authorisation as IB World Schools
- Delivering a future-focused, progressive offering
- Aligning our teaching and learning with international practices in education
- Achieving outstanding matric Results
- Focusing and delivering on our four academic pillars

### **Providing choice across our colleges, where students are:**

- Selecting from a wide variety of subjects
- Selecting personal subject combinations
- Selecting their Grade 12 teachers in certain subjects
- Selecting different ways they can share their knowledge and understanding as part of their learning journey
- Engaging with Global Education, as our partner in further studies, to explore the variety of opportunities to study abroad

### **Embracing who we are as global citizens:**

- Celebrating each student as an individual
- Supporting each student in their personal learning journey
- Welcoming multicultural families across our campuses
- Valuing different cultures, their beliefs, and the ways they express themselves
- Being non-denominational campuses
- Embracing the principles of respecting each other, ensuring the inclusion of all, and acknowledging the diversity between us
- Providing an all-inclusive sport, cultural and extra-curricular offering where students can engage in interests beyond the classroom

# International Baccalaureate

**As multi-campus schools, the Pre-Primary and Preparatory Schools offer the International Baccalaureate PYP Programme from Grade 000 - Grade 7.**

The IB PYP is an internationally recognised and rigorously integrated programme in which inquiry into local, regional, and global perspectives are embedded in all teaching and learning.

Crawford International collaborates with the International Baccalaureate Organisation (IBO) to bring world-class education to our schools and further enhance the Crawford International offering.

The International Baccalaureate Programme offers students ongoing opportunities to become active, lifelong learners. These lifelong learners demonstrate respect for themselves and others while developing the capacity to participate confidently in the world.

In 2022, more than 5 200 schools in 148 different countries taught the exclusive IB programmes.

## **The International Baccalaureate Organisation**

The IBO provides:

- curriculum and assessment development,
- ongoing teacher education,
- updated information sessions, and
- electronic networking within the global community of IB World Schools.

The International Baccalaureate further enhances the rigorous, globally aligned academic programme in our Pre-Primary and Preparatory Schools, preparing students to excel at high school and beyond.





# Academic Overview

At Crawford International, we focus on learning that is engaging, relevant, challenging, and significant. Our pedagogical approaches push beyond traditional subject-based teaching to innovative concept-based approaches.

We aspire to bring relevance, authenticity, and connection to our students' education to help them acquire the knowledge, skills and understanding they need to succeed in today's world. Our approach ensures learning has local and global significance for all students, in all cultures, and all places.

Therefore, Crawford International has identified four academic pillars that visualize, describe, and enhance our offering of a dynamic, personalised learning journey for each student.

**The four academic pillars that underpin academic excellence include:**

Acquiring knowledge, conceptual understandings and essential skill sets that are collectively applied to thrive in an innovative and fast-changing world.



Empowering student voice, choice and ownership of learning by encouraging personal interests, initiatives, perseverance and adaptability, driven by ongoing reflection and individual progress.



Shaping a learning journey, in which data-driven insights guide targeted instruction, content, skills, tools, pace and mentorship discussions to support and enrich each student as a unique individual.

Nurturing a shared awareness and understanding of local and global perspectives and cultures to encourage interconnectedness and international mindedness as future changemakers.





**Underpinning the academic pillars, we have:**

- A commitment to blended learning using Toddle, (LMS) and MS Teams platforms to deliver dynamic learning within and beyond the classroom;
- Our Communities of Excellence (CoEs) that engage teachers in continual professional development and conversations around future-focused teaching and learning;
- Evolving technologies as tools to enhance teaching and learning. Technology provides the means to investigate ideas, communicate findings, connect people, and create innovative solutions. Purposeful technology integration and implementation in authentic contexts can excite, invite, support, and extend learning in multiple ways.

**At Crawford International, our students are provided with unique opportunities to embrace learning as a chance to:**

- ask open-ended questions,
- try different learning processes,
- generate motivation and perseverance,
- set learning goals,
- reflect on achievement,
- self-assess as they learn, and
- adjust learning processes where necessary.



Crawford International

Your School of Voice and Choice



# Mentorship Framework

The unique Crawford International Mentorship Framework has been designed to empower continued lifelong success, defined through personal, social, emotional, and academic goals and action plans. These provide the direction each individual aspires, as part of their learning journey, and is motivated by personal awareness, targeted support, as well as individualised coaching, training and advice.





Crawford International

# Pre-Primary and Preparatory

Crawford International has been awarded authorisation as International Baccalaureate (IB) World Schools, offering the International Baccalaureate Primary Years Programme (PYP) from Grade 000 – Grade 7.

The International Baccalaureate Primary Years Programme (PYP) is an internationally recognised and rigorously integrated programme that aims to develop children as global citizens who choose to impact the world around them positively.

The programme places emphasis on universal development. It is designed to develop each child's understanding of the challenges and experiences of others locally and globally by continually exploring real-world issues.



Primary Years  
Programme

## The Primary Years Programme

- The PYP is an academically challenging programme that creates lifelong learners.
- It ensures that students evolve as inquirers, both within and beyond the classroom.
- It extends understanding beyond knowledge, by focusing on concepts, skills, attitudes, and actions.
- It encourages the establishment of personal values and attributes that provide a foundation upon which international-mindedness can be explored and understood.





## Age Requirements per Grade:

Grade 0000*	-	Age 2 turning 3
Grade 000	-	Age 3 turning 4
Grade 00	-	Age 4 turning 5
Grade 0	-	Age 5 turning 6

\*Grade 0000 is only offered at specific Crawford International campuses.

At Crawford International, we believe in inspiring our students to become lifelong learners. We focus on inquiry based learning across all units and interactive experiences, so that students naturally think, understand and apply.

## Meaningful Play as Inquiry

We tap into our students' unique abilities and talents, relying on their natural sense of curiosity and provoking their thinking through meaningful play opportunities. Our students are encouraged to explore, discover, and experiment.

## Explore and Discover Through Inquiry

Emphasis is placed on thinking skills, and students are encouraged to explore a variety of options when problem-solving to discover a workable solution. Through thinking routines, we teach our students to question and form opinions that are expressed through:

- discussion and debate;
- drawing;
- painting and creating; or
- role play and dramatisation.



# Pre-Primary

## Making Learning Visible

Communication, collaboration, creativity and critical thinking are purposefully included in learning engagements. Students are guided to make their thinking visible so that they are able to share their understandings.

## Holistic Development

By combining a strong sense of curriculum with the necessary global competencies, we believe that we create a scaffolding where our teachers can support our students and move them forward.

- **Physical**

We provide students with fun and challenging outdoor experiences to enhance large muscle development, which is vital for future learning.

- **Social and Emotional**

Our dedicated staff create a safe, nurturing environment where each student can develop confidence and social skills.

- **Intellectual**

As part of the PYP, students engage in four to six transdisciplinary units of inquiry. These include the PYP subjects of maths; languages; science; social studies; art; and personal, social, physical and emotional (PSPE) education.

- **Creative**

We celebrate the arts through dance; drama; art and music; and consider them instrumental in building self-esteem and allowing students to express themselves.





# Preparatory

## Grade 1 – 7

Crawford International Preparatory Schools are founded on the principle that students and staff are treated with dignity and respect. Individuality is always encouraged by promoting voice, choice, and ownership of the learning journey.

## Making a Difference

Crawford International students will use these interactive and collaborative learning experiences to express their ideas and opinions, and ultimately propose potential solutions that make a difference in their lives and the lives of others.

## Personalised Learning through the PYP

We provide personalised learning, mentorship, and support to ensure our students are immersed in a philosophy of responsibility from a young age. Teachers are provided with various professional development opportunities and are encouraged to use innovative ideas and methodologies in their classroom.

Students can also engage in extended 'option' subjects, which provide additional enrichment in art, music, languages, and technology.



# Crawford International College

## Grade 8 – 12

Crawford International Colleges prepare students for responsible adulthood and potential leadership. With a choice of more than 20 subjects, students are offered the opportunity to pursue special areas of interest as part of our holistic approach to education. Students are also encouraged to participate in various extra-curricular activities.

## Academics

Crawford International Colleges offer the widest and most flexible subject choices for students from Grade 10 – 12. The timetable allows for numerous combinations of subjects and each student is timetabled individually, according to their subject requirements.

## Crawford International Colleges are founded on the following Principles:

- Students adhere to a code of conduct, ensuring accountability and mutual respect.
- Small classes ensure individual attention.
- Matric students have an opportunity to select their teachers.
- Seniors can select an eight-subject timetable as a standard offering with after-hours support for additional subjects chosen.
- A mentorship programme is offered to support the personalised learning journey.
- School counselling and support is provided for career advice and assistance with tertiary applications.
- In partnership with Global Education, we provide specialist advice and support when considering further studies across the globe.

## Matric

The Grade 12 students write their final National Senior Certificate (NSC) through the Independent Examination Board (IEB). On application at universities in South Africa and globally, the academic criteria for entrance are based on the symbols achieved by the student on their NSC.

The IEB is accredited by Umalusi. Umalusi is the quality assurance body in South Africa, which moderates examinations and marking procedures; and issues the NSC.



# Assessments and Benchmarking

As a leading schools group, Crawford International is renowned for the number of graduates achieving top-end results at universities both locally and internationally. As part of this preparation and process, we believe in the value of tracking, monitoring and supporting student progress and performance throughout their learning journey. This includes evaluating and understanding our students' current strengths and areas where they can extend or develop their personal skill set.

In addition, as International Baccalaureate World Schools, we are continually evaluated by visiting IB teams on our delivery of globally aligned teaching and learning practices. This is to ensure that each school meets the required IB standards that have been defined for all schools authorised as IB World Schools.

## **Benchmarking Against Global Standards**

As of 2022, all our schools have implemented the MAP Suite of assessment tools, provided by the NWEA (a research-based organisation based in the USA).

MAP Growth is the most trusted and innovative assessment for measuring achievement and growth in K–12 math, reading, language usage, and science.

It provides teachers with accurate, actionable evidence to help inform instructional strategies regardless of how far students are above or below grade level.

Using MAP Growth as part of a comprehensive and balanced assessment plan, our teachers can confidently tailor instruction to challenge every student, whether they are below, at, or above grade level.

MAP Growth student reports also present realistic learning goals by subject areas so that, with the guidance of a teacher, students can individually see their progress and be inspired to take charge of their own learning.

## **Assessment as a transparent and ongoing process**

To understand what is expected to be achieved, students co-construct or are provided with success criteria connected to the learning outcomes defined in their curriculum.



Students reflect and self-assess, and are also formally assessed on knowledge, skills and understandings, which they can share with teachers in a variety of ways.

Tools used for assessing student progress and achievements can include:

- Checklists
- Rubrics
- Harvard Visible Thinking Strategies
- Observations
- Interviews
- Portfolios
- Various written assessments (formal, informal, IEB matric)
- Various practical tasks
- Apps and other technology tools (MAP Assessment)







Team play, leadership and sportsmanship are developed through two categories of sport. The first category of traditional, competitive sport which includes activities such as:

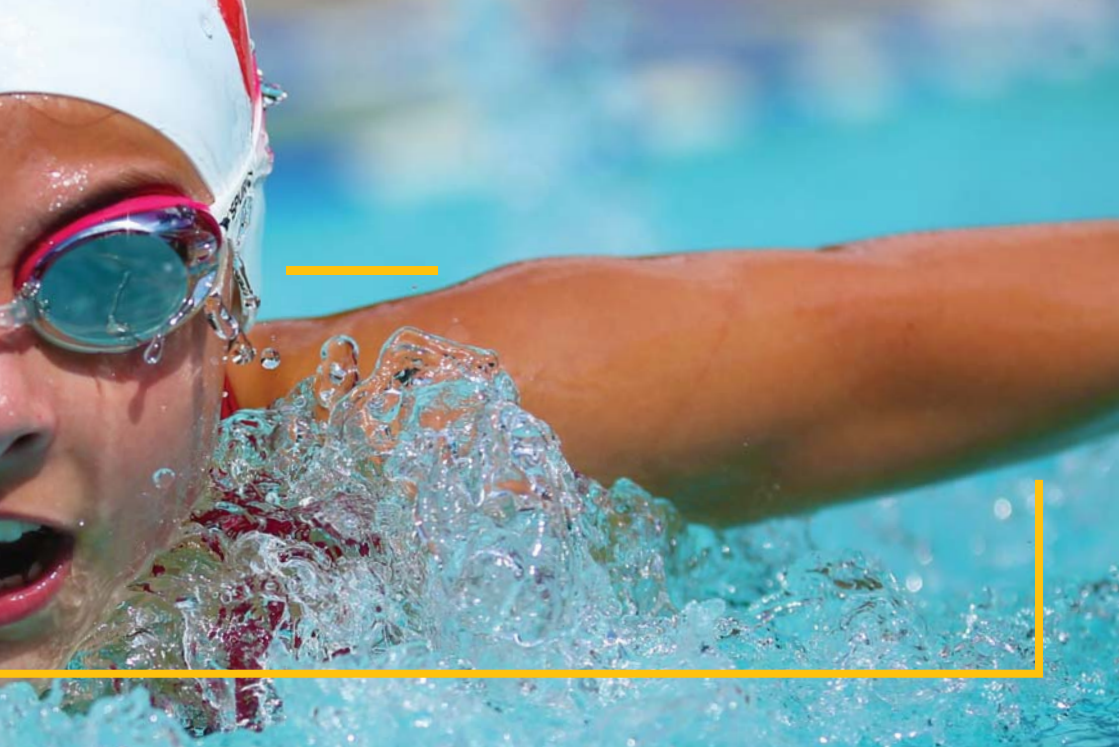
- swimming
- tennis
- soccer
- rugby
- Netball
- cricket
- hockey
- golf
- water polo
- squash
- volleyball
- chess
- athletics

The second category of enrichment sport, teaches our students that there is more to life than beating the opposition.

Companionship, teamwork, social interaction, and self-fulfilment are experienced through participation in activities such as:

- scuba diving
- horse riding
- water skiing
- rock climbing
- archery
- fencing

Selection varies according to the demand at each campus.



Sports coaches are employed to assist teachers with the training and preparation of sports teams, and many Crawford International campuses excel in sporting disciplines. Crawford International has many provincial and national representatives flying the Crawford International flag in the sporting arenas and as Olympians.

**Approximately 90% of Crawford International Preparatory students participate in some form of sporting activity.**

**Approximately 80% of Crawford International College students participate in some form of sporting activity.**



Cultural





Cultural enrichment is at the very heart of the Crawford International ethos. It is built into the school curriculum and is also offered via a range of extra-curricular activities. This ensures that each student leaves our school as a self-assured, confident, independent, and well-rounded individual.

Students are encouraged from an early age to express themselves as free-spirited individuals who see the world in different spectrums of colour, through the art forms of drama, music, art, public speaking, debating and dance.

Our schools participate in various festivals and competitions with many Crawford International students going on to achieve success in these additional offerings and experiences.

Depending on the demand, further activities are also available such as photography, musical productions, play festivals, video clubs, drumline and much more.

# Co-curricular Activities



We encourage and motivate students to try new pursuits by offering a variety of opportunities within and beyond the classroom. This fulfils a vital educational function, as active participation contributes to the all-round development of our students.

The activities further allow students to have fun while improving their health and wellness. It also creates a sense of community and belonging.



## Adventure Club /Aftercare

All Crawford International Pre-Primary and Preparatory Schools provide carefully structured, on-site, aftercare programmes to suit the needs of our Crawford International families. Parents can choose between full-time, part-time, or ad-hoc aftercare.

The aftercare facilities are run by suitably qualified staff members and operate from the end of the school day. Students can attend extra-curricular activities, enjoy free play or participate in various activities arranged in the afternoons. Supervised homework sessions and nutritious meals are offered to students.



# Multiforms (Uniforms)

Crawford International has a unique approach to uniforms. Rather than a uniform, we have a 'multiform' that encourages a sense of individuality and provides students, as young as five, with the opportunity to practise their decision-making skills daily.

Crawford International students have several uniform options available, which they can mix and match to create a casual multiform. This allows for freedom of expression within acceptable boundaries.

- In Pre-Primary, the multiform consists of a t-shirt, shorts, skorts, and a tracksuit. Various items, such as lunchboxes and backpacks are also available.

- The Preparatory multiform consists mainly of a golf shirt (sleeveless, short-sleeved or long-sleeved) to be worn with jeans, a skirt or a skort.
- The College has a 'step-out' multiform that consists of a white shirt, smart black trousers/skirt and a Crawford International tie and blazer. The casual multiform consists of black trousers/skirt, school golf shirt, and a variety of tops and other optional items.

At Crawford International, we allow concessions to the multiform to accommodate our multicultural environment.



# Admissions

Admissions for new enrolments start early in the previous school year and continue throughout the year. To avoid disappointment, parents/guardians are strongly encouraged to begin the application process well in advance.

## Visit the Campus

Prospective parents and students can visit the campus and collect all the necessary documentation before completing an enquiry or the online application process. Initial questions and visits require no commitment.

## Meet and Greet

Admissions are based primarily on a personal 'meet and greet'. Students may be required to undergo a placement screening, which may happen in the case of younger students, where school readiness needs to be assessed or a College student's academic level needs confirmation.

## Apply Online

The online application must be accompanied by the following:

- Application fee
- Passport-sized photographs of the student
- Most recent school reports (not applicable for Grade 0000 to Grade 0)
- ID copy of parents
- Unabridged birth certificate of the student
- Subject choices and a short biography (for applications to the Senior Preparatory and College)

## Visit our Website to Apply

**[crawfordinternational.co.za/apply-now](http://crawfordinternational.co.za/apply-now)**

On acceptance, a non-refundable enrolment fee is payable.

For more information on fees and admissions, kindly contact your Crawford International school of choice.

**For more information on fees and admissions, kindly visit our website to contact your Crawford International school of choice.**

**[www.crawfordinternational.co.za](http://www.crawfordinternational.co.za)**