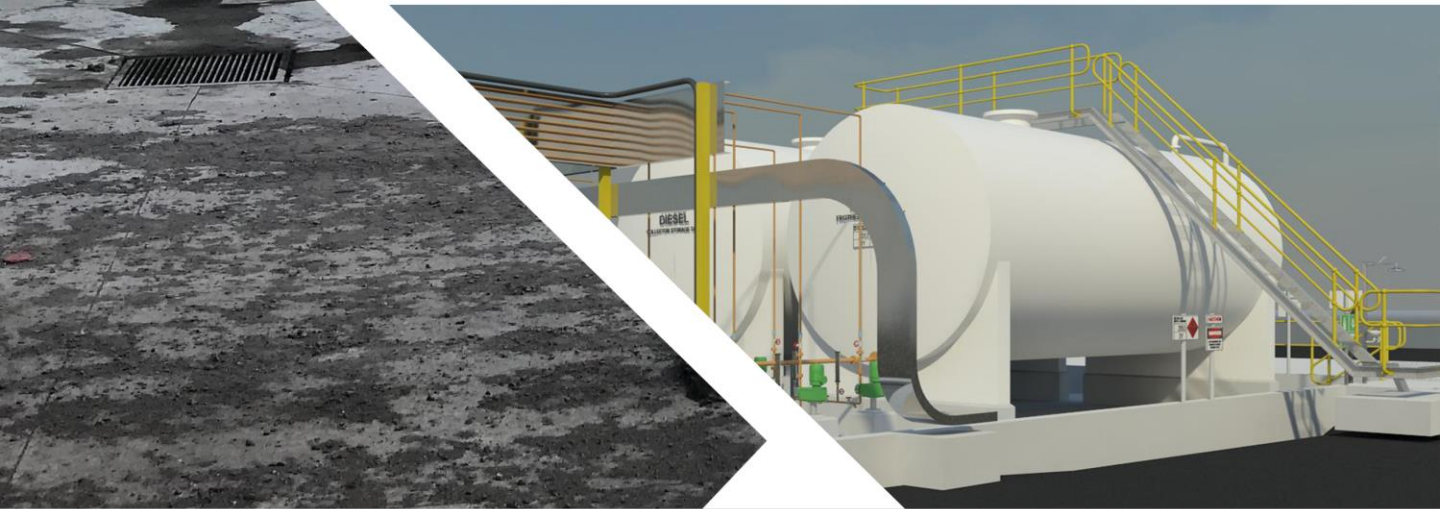


CAPABILITY STATEMENT

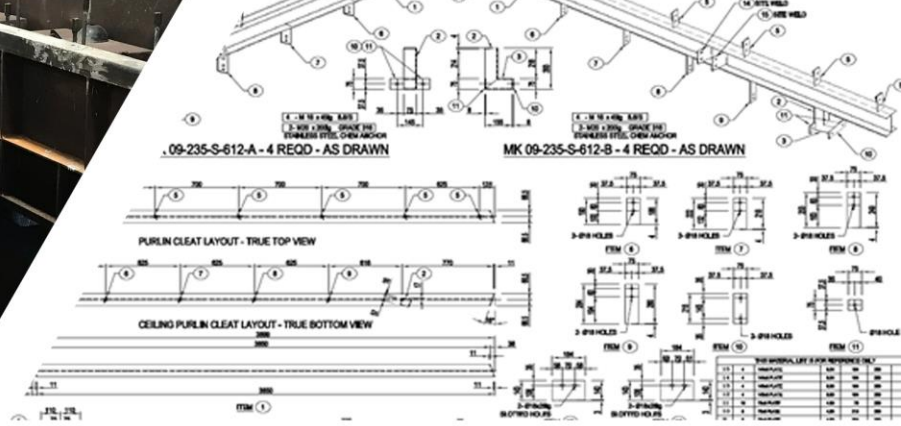
MINING & INDUSTRIAL

REDLINE DRAFTING & MARK UPS
STRUCTURAL ENGINEERING & CERTIFICATION
MINING INFRASTRUCTURE
STEEL DETAILING
FABRICATION DRAWINGS
PATENT DRAWINGS



CEADS

CAPRICORN **ENGINEERING**
AND **DRAFTING** SERVICES



PROFILE

CEADS is a CQ based design shop that has been servicing CQ and greater QLD since 2007. With a combined 40+ years experience in the construction & mining industries. Our team has the expertise to help you with any project and can manage your projects from concept to construction.

CEADS are one of the largest design firms in the region with a well-established reputation for producing quality work.

Our industrial team have demonstrated experience within the mining & fabrication industries. The team can help you with your design, fabrication/construction and project management needs. From conceptual design, visualisation (virtual & augmented reality) through to construction documentation and full consultancy management (structural, civil, hydraulic, electrical, mechanical & more) our team can lead the way throughout the design process.

Once designed CEADS can provide tender management services to find you the best fabricator/builder for your project. Once selected we can oversee the construction by providing project management to ensure the construction is completed as planned, on time and within budget.

Safety in design and construction is our number one priority. We have experience across multiple industrial sites and have the capability to work in with required site standards.

At CEADS we are more than designers we are a full turnkey solution for any industrial or mining project.

SPARK

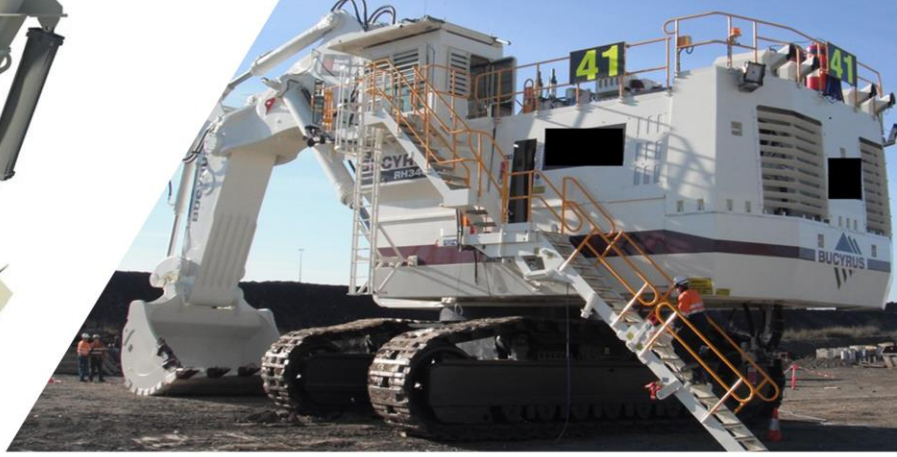
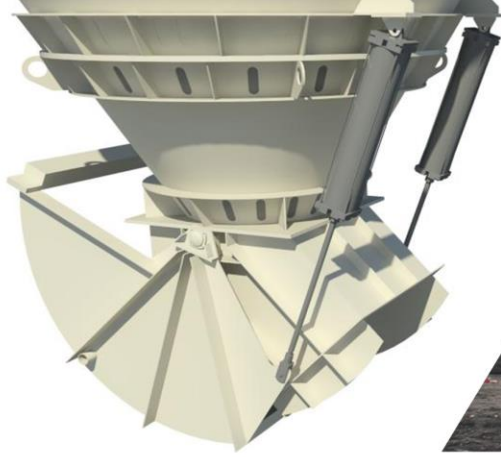
SPARK THE DREAM

IGNITE

IGNITE YOUR **IMAGINATION**

CREATE

CREATE THE REALITY



SERVICES

CONSULTANCY MANAGEMENT

CEADS are your one stop shop! We have a large network of consultants including surveyors, geotechnical, structural, civil, hydraulic, electrical, mechanical engineers. We can engage and manage any consultants that your project may require.

3D SCANNING

CEADS can arrange for 3D scanning of the site to ensure the topography, along with any existing structures are accurately captured to ensure your project is designed using the most accurate information.

DOCUMENTATION

We can prepare documentation providing the detailed information required for certification, patent lodgement and/or construction works. In some instances, structural engineering or other specialised consultants may be required. This work is integrated with our documentation to ensure that all required information is available to certify and/or complete your project.

STRUCTURAL ENGINEERING/CERTIFICATION

CEADS are experienced in steel detailing and can obtain the certification documentation required for your project.

FABRICATION DRAWINGS

Once the concept design is finalised and the engineering certification is in, its time for fabrication drawings. Our team has experience preparing shop drawings from plate profiles, structural steel, through to complex chute arrangements and more.

DRAWING REGISTERS/ REDLINE DRAWING MARK UPS

Our team can mark-up your existing CAD drawings from your red line drawings. We can also organise your existing drawings and produce drawing registers with a corresponding filing structure. This can be done remotely or on site!

SAFE DESIGN REPORTS

As part of our obligation under the WHS Act and Regulations 2011, CEADS will analyse designs and prepare safe design reports for all projects. These reports look at reducing and where possible removing hazards throughout demolition, construction, maintenance and in-use stages. We believe in a safe working environment, and we strive to ensure this carries on through to the worksites on our projects.

FEATURED PROJECTS



PLANT UPGRADES & MAINTENANCE

Location	Rockhampton, Queensland Port Hedland, Western Australia
Client	Austrak
Detail	Lead consultant for design & planning of ongoing maintenance and upgrades to concrete sleeper production factories.



RESERVOIR REFURBISHMENT

Location	Emu Park, Queensland
Client	Roth Plumbing – Livingstone Shire Council
Detail	Lead consultant for design of a proposed roof & access system to be installed onto existing concrete reservoir.



RAILWAY SLEEPER PRODUCTION

Location	Various
Client	Vossloh
Detail	Design, construction & commissioning of railway sleeper moulds for the Melbourne Level Crossing Upgrade Project



RECORD

Capricorn Engineering & Drafting Services has been operating throughout CQ for 10+ years. In this time, we have worked with local, national & multinational companies as well as local, state & federal levels of government.

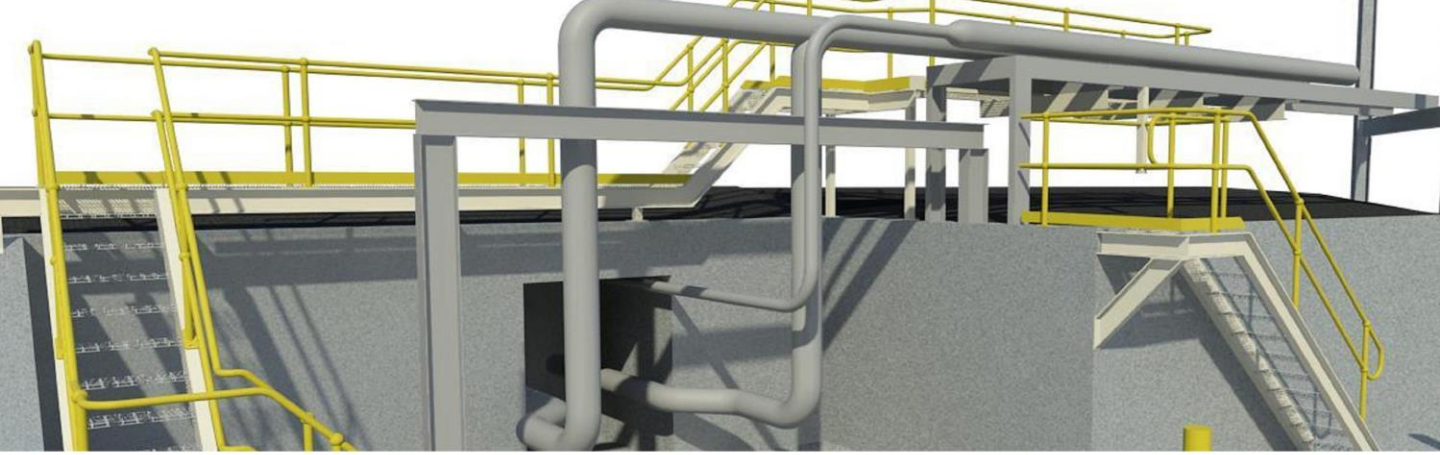
These include (but are not limited too)

- Anglicare
- Ashton Engineering
- Austrak
- Close Constructions
- CQ Water
- Enweld and Fabrication
- Fitzroy River Water
- Jellinbah Mining
- Link Mining Services
- Livingstone Shire Council
- Luke Hinton Concreting
- Northern Peninsula Area Regional Council
- Puma Energy
- Reid Liquor
- Rockhampton Regional Council
- Roth Plumbing
- SMW Group
- Steel Buildings Australia
- Teys Australia
- Tibbs Fleet Weld
- Vossloh
- Yancoal

RECOGNITION

CEADS are the proud recipients of the following design awards.

- 2021 BDAQ Regional Design Award – Best Special Project
- 2021 BDAQ Regional Design Award – New Residential House up to \$500,000 Construction Cost
- 2021 BDAQ Regional Design Award – Best Small Home / Gross Floor Area Under 150m²
- 2021 BDAQ Regional Design Award – Multi Residential Project Up to 3 Storeys
- 2021 BDAQ Regional Design Award – Residential Alterations-Additions / Houses up to \$350,000 Construction Cost
- 2022 BDQ Regional Design Award – New Home \$1M - \$2.5M
- 2022 BDQ Regional Design Award – Small Home Design
- 2022 BDQ Regional Design Award – Conceptual Building Design / Commercial
- 2022 BDQ Regional Design Award – Residential Interiors
- 2022 BDQ Regional Design Award – Conceptual Design / Residential
- 2022 BDQ Regional Design Award – Sustainable Building Design / Residential



MANAGEMENT SYSTEMS

QUALITY ASSURANCE

CEADS is committed to providing clients with the highest standard of service and products displaying a high level of professionalism. CEADS is dedicated to the ongoing development and improvement of the quality assurance procedures for the benefit of customers, staff and the company. All CEADS staff are responsible for performing their duties in accordance with all company policies and procedures. CEADS recognises its responsibility to identify and provide adequate resources including assigning trained personnel to perform appropriate tasks.

SAFETY IN DESIGN

As part of our obligation under the WHS Act and Regulations 2011 CEADS will analyse designs and prepare safe design reports for all projects. These reports look at reducing and where possible removing hazards throughout demolition, construction, maintenance and in-use stages. We believe in a safe working environment, and we strive to ensure this carries on through to the worksites on our projects.

ENVIRONMENTAL STATEMENT

As a design-based business, we have a responsibility to minimise our footprint on the earth. We pride ourselves on delivering energy efficient designs that utilise environmentally sustainable design principles whilst still working within our clients' budgets. Design principles include efficient water usage, natural daylighting, environmental heating/cooling and many more. Traditionally design-based businesses have a high output of paper wastage. At CEADS we are transitioning to a fully electronic based company meaning that rather than providing plans on paper, when practical we deliver plans electronically.





INSURANCES, LICENSING/MEMBERSHIPS , PREQUALIFICATIONS

INSURANCE

- Workcover
- Public Liability insurance - \$20,000,000.00
- Professional Indemnity insurance - \$1,000,000.00

LICENSING/MEMBERSHIPS

- QBCC License – 1126593
- QBCC License – 1126594
- BDQ Member – 1183
- BDQ Member – 1185

PREQUALIFICATIONS

- Queensland Government Dept. of Housing & Public Works PQC Level 3

MEMBERSHIPS

BDQ - Building Design Queensland - www.bdaq.com.au

QBCC - Queensland Building & Construction Commission - www.qbcc.qld.gov.au

HIA - Housing Industry Association - www.hia.com.au





CONTACT US

FOR MORE INFORMATION

If you would like further information or wish to discuss your future projects in greater detail, please do not hesitate to contact us.

Kim Laundry

Partner/3D Scanning Manager

- Diploma of Building Design
- QBCC Licence # 1126594
- BDQ CQ Branch Delegate and President
- Cert III Engineering Mechanical – Mining
- Real Estate Agent Licence

kim.l@ceads.com.au

Darryl Lindley

Partner/Specialty Projects Manager

- Building Design – Low Rise
- QBCC Licence # 1126593
- BDQ CQ Branch Secretary
- Bachelor of Engineering Technology
- Real Estate Agent Licence – Principal

darryl.l@ceads.com.au

General Office Enquiries

info@ceads.com.au

www.ceads.com.au

(07) 4925 0772

