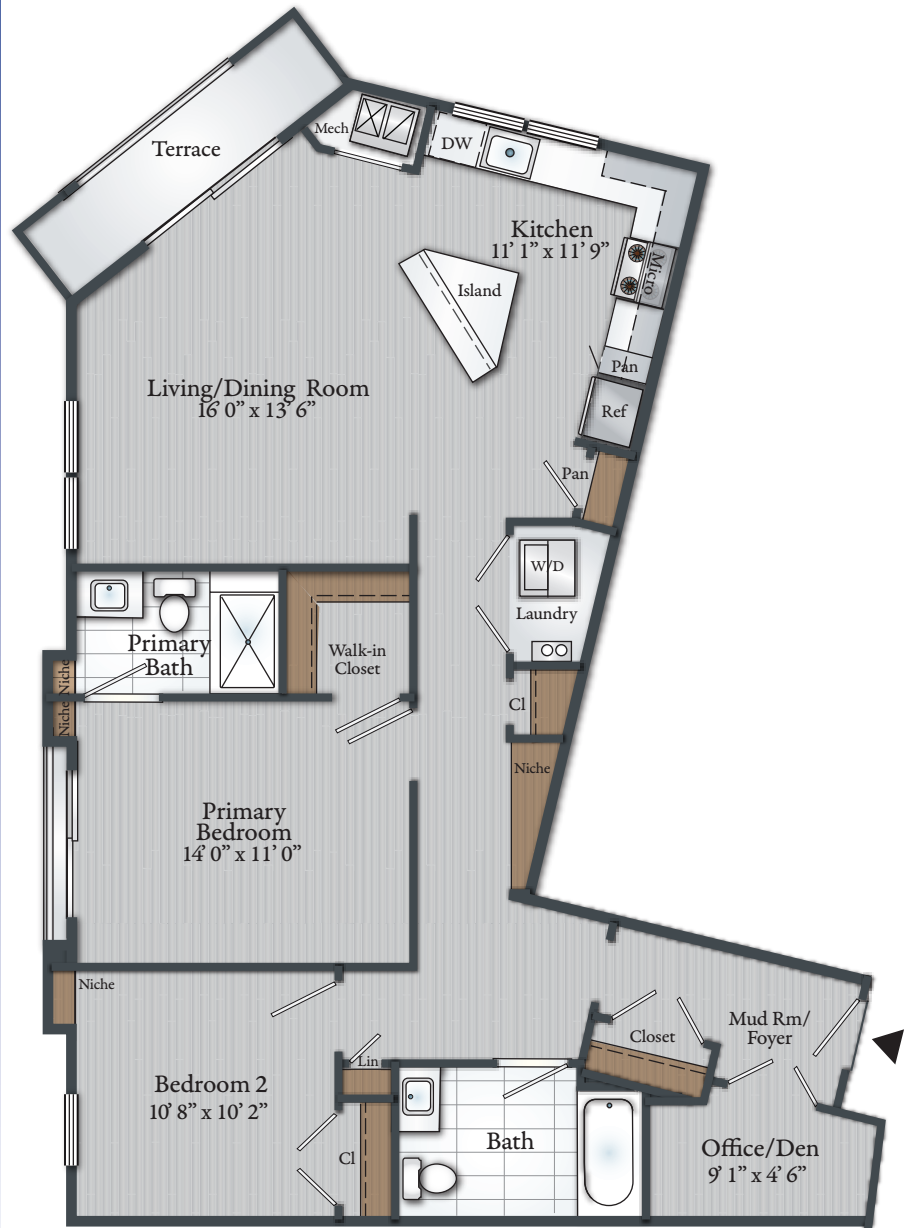


2 BEDROOM 2 BATH FLAT

Approx. 1,208 Sq. Ft.
inclusive of 53 Sq. Ft. Terrace

#204, #304

- Modern Kitchen
- Stainless steel appliances
- Quartz countertops
- Breakfast bar with pendant lights
- Luxury plank flooring
- Large Primary Bedroom with walk-in closet and Primary Bath
- Juliet Balcony in Primary Bedroom
- Ceiling fans in Bedrooms and Living Room
- Stacked washer/dryer
- Office/Den
- Terrace

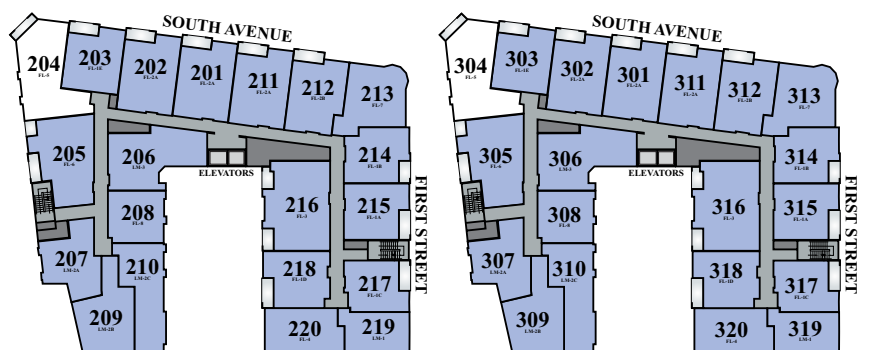


Soho

AT FANWOOD STATION

282 South Avenue
Fanwood, NJ 07023
908-224-5820

Email: Soho@AptRentNJ.com
AptRentNJ.com



SECOND FLOOR

KEY MAP

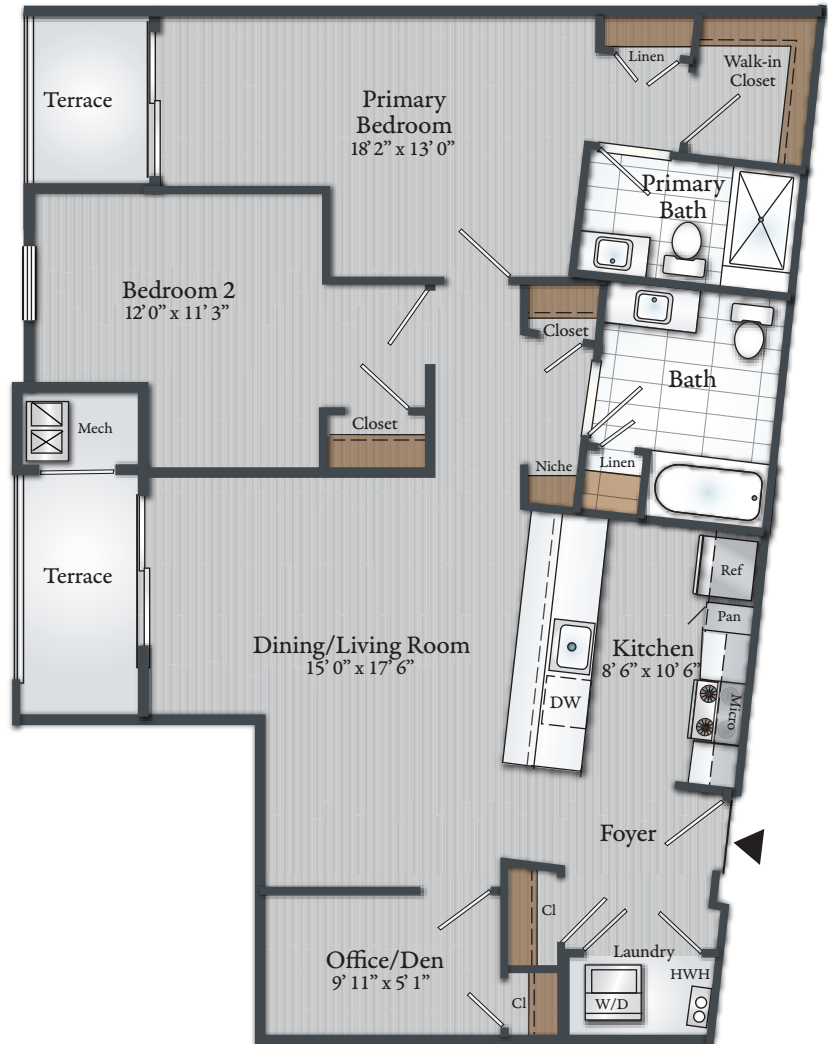
THIRD FLOOR

2 BEDROOM 2 BATH FLAT

Approx. 1,219 Sq. Ft.
inclusive of 89 Sq. Ft. Terrace

#205, #305

- Modern Kitchen
- Stainless steel appliances
- Quartz countertops
- Breakfast bar with pendant lights
- Luxury plank flooring
- Large Primary Bedroom with walk-in closet and Primary Bath
- Ceiling fans in Bedrooms and Living Room
- Stacked washer/dryer
- Office/Den
- 2 Terraces

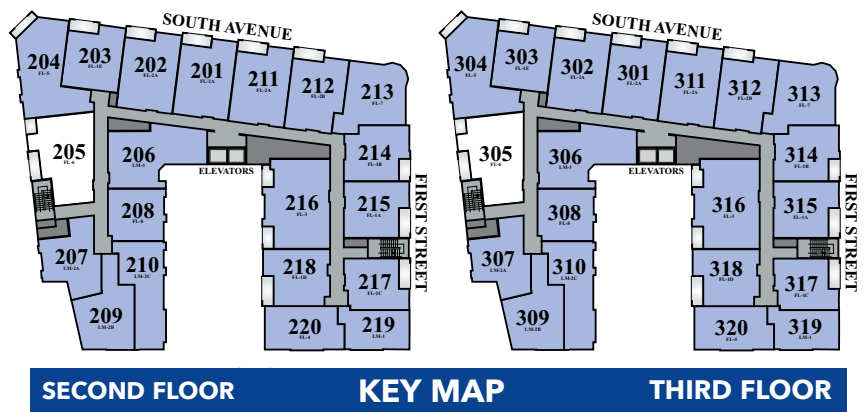


Soho

AT FANWOOD STATION

282 South Avenue
Fanwood, NJ 07023
908-224-5820

Email: Soho@AptRentNJ.com
AptRentNJ.com

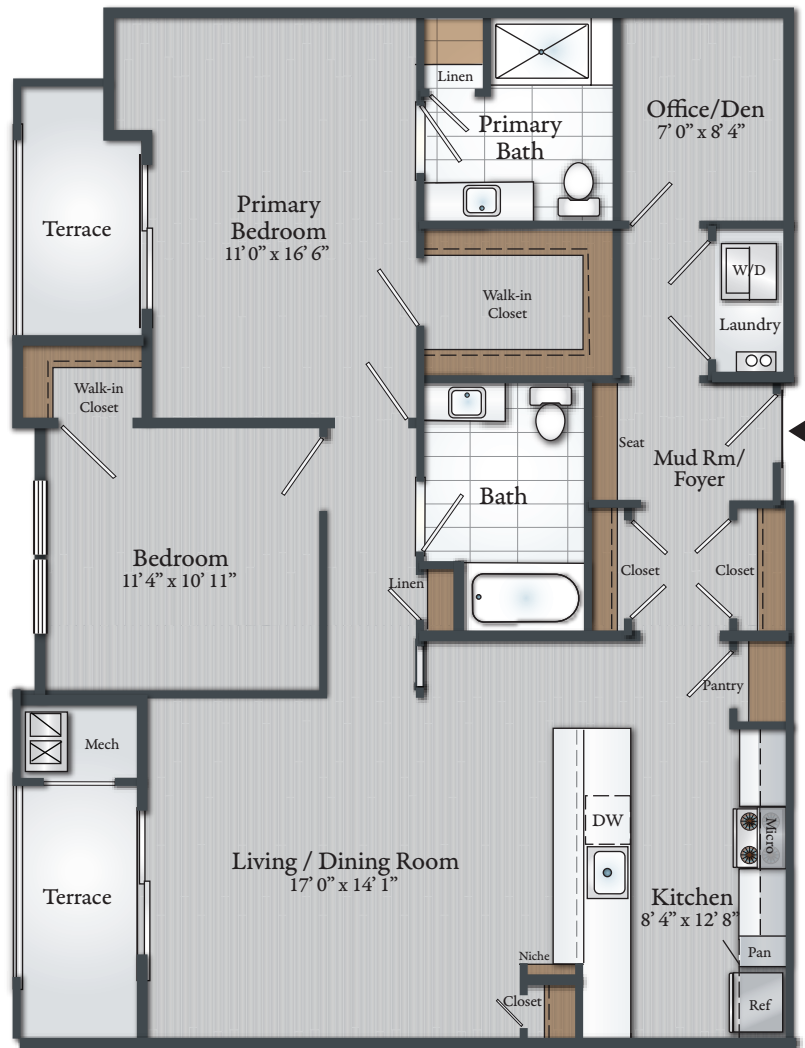


2 BEDROOM 2 BATH FLAT

Approx. 1,373 Sq. Ft.
inclusive of 104 Sq. Ft. Terrace

#216, #316

- Modern Kitchen
- Stainless steel appliances
- Quartz countertops
- Breakfast bar with pendant lights
- Luxury plank flooring
- Large Bedroom with walk-in closet
- Ceiling fans in Bedrooms and Living Room
- Stacked washer/dryer
- Office/Den
- Mud Room/Foyer with seat
- 2 Terraces



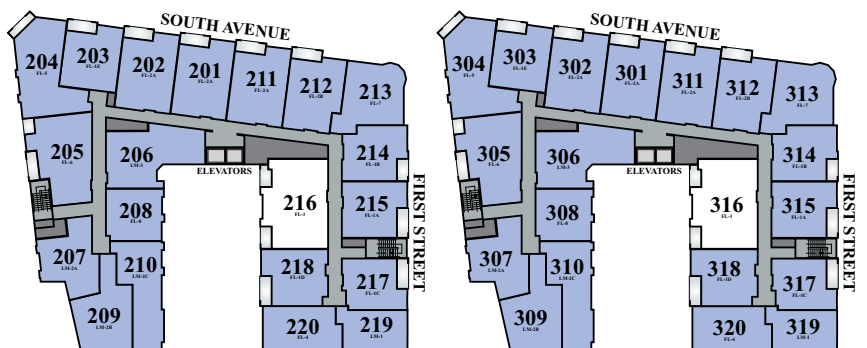
Soho

AT FANWOOD STATION

282 South Avenue
Fanwood, NJ 07023
908-224-5820

Email: Soho@AptRentNJ.com

AptRentNJ.com



SECOND FLOOR

KEY MAP

THIRD FLOOR