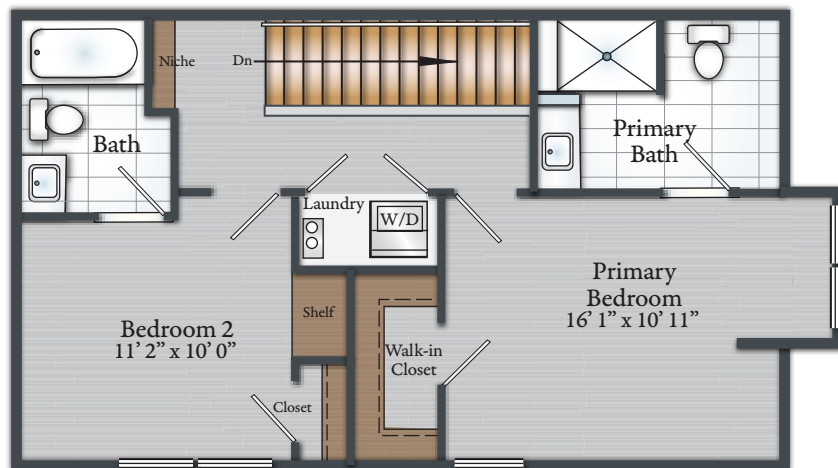


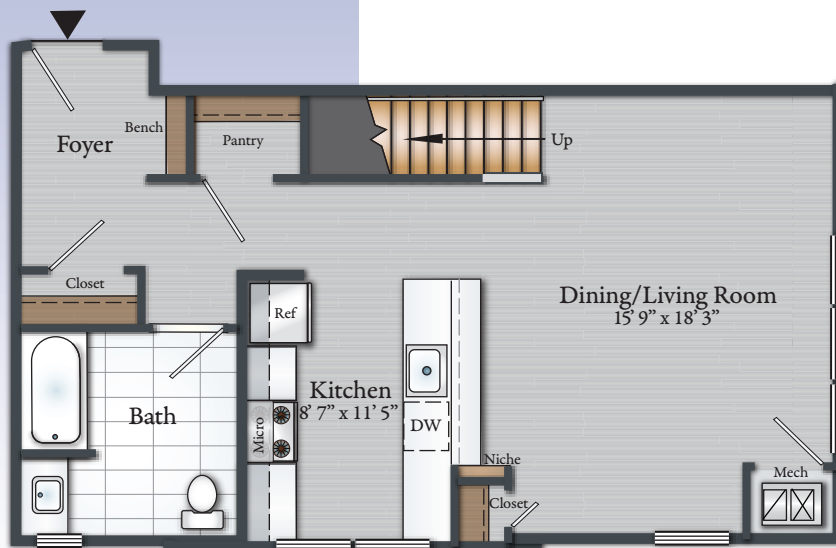
2 BEDROOM 3 BATH DUPLEX WITH LOFT

Approx. 1,226 Sq. Ft.
#319

- Modern Kitchen
- Stainless steel appliances
- Quartz countertops
- Breakfast bar with pendant lights
- Luxury plank flooring
- Large Primary Bedroom Suite with walk-in closet and Bath
- Ceiling fans in Bedrooms and Living Room
- Stacked washer/dryer



SECOND LEVEL



FIRST LEVEL

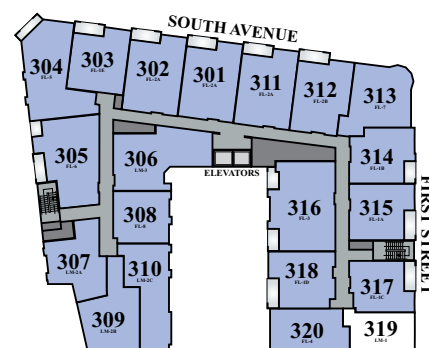
Soho

AT FANWOOD STATION

282 South Avenue
Fanwood, NJ 07023
908-224-5820

Email: Soho@AptRentNJ.com

AptRentNJ.com



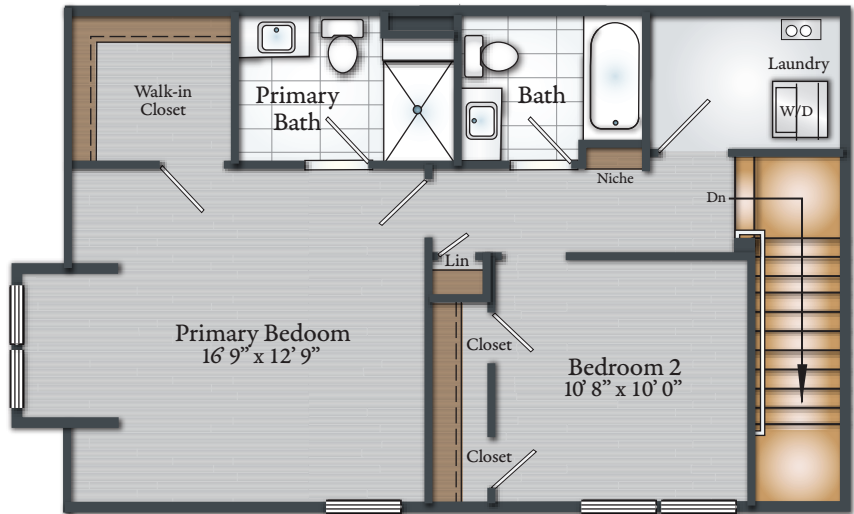
KEY MAP

THIRD FLOOR

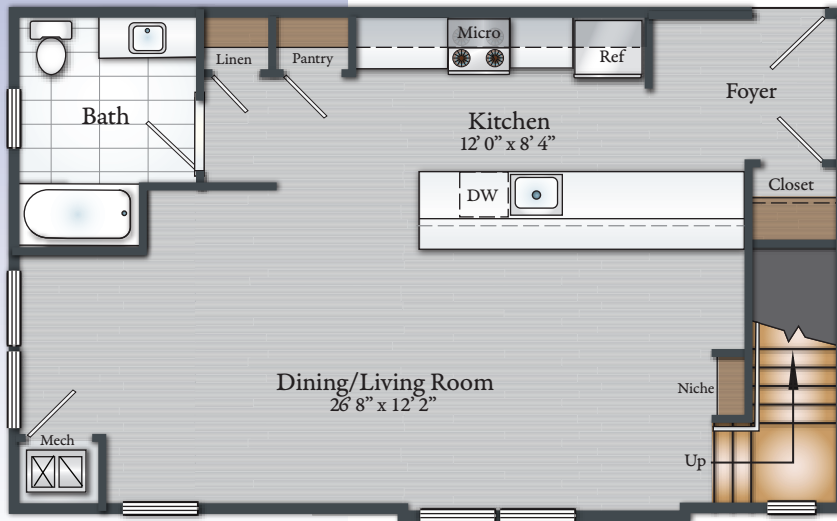
2 BEDROOM 3 BATH DUPLEX WITH LOFT

Approx. 1,346 Sq. Ft.
#320

- Modern Kitchen
- Stainless steel appliances
- Quartz countertops
- Breakfast bar with pendant lights
- Luxury plank flooring
- Large Primary Bedroom Suite with walk-in closet and Bath
- Ceiling fans in Bedrooms and Living Room
- Stacked washer/dryer



SECOND LEVEL



FIRST LEVEL

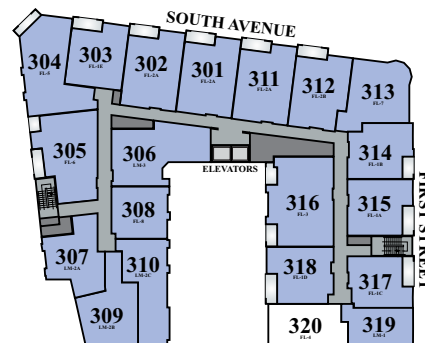
Soho

AT FANWOOD STATION

282 South Avenue
Fanwood, NJ 07023
908-224-5820

Email: Soho@AptRentNJ.com

AptRentNJ.com



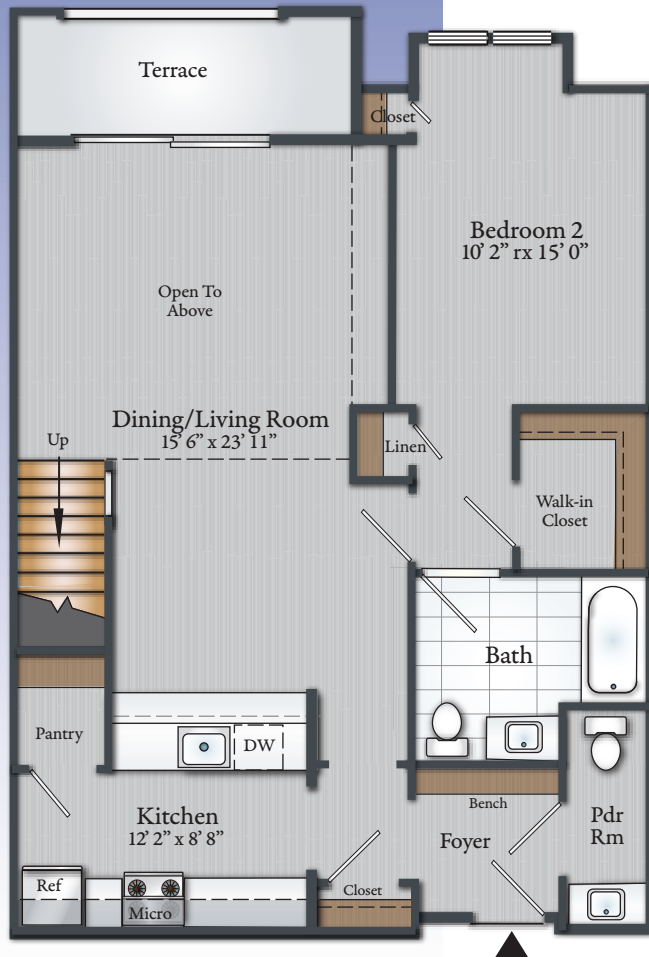
KEY MAP

THIRD FLOOR

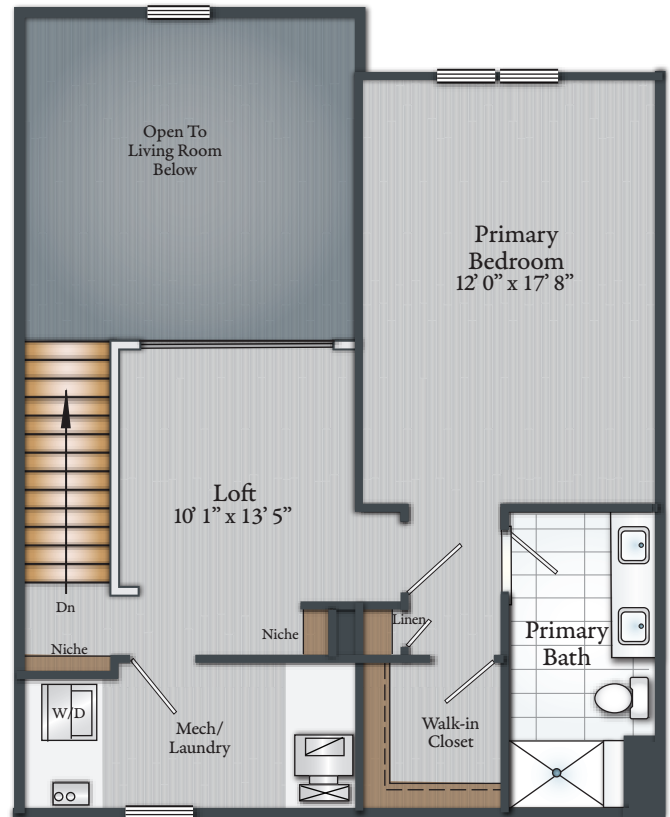
2 BEDROOM 2½ BATH DUPLEX WITH LOFT

Approx. 1,651 Sq. Ft.
inclusive of 71 Sq. Ft. Terrace

#401, #402, #410



FIRST LEVEL



SECOND LEVEL

- Modern Kitchen
- Stainless steel appliances
- Quartz countertops
- Breakfast bar with pendant lights
- Luxury plank flooring
- Large Primary Bedroom Suite with walk-in closet and Bath
- Ceiling fans in Bedrooms and Living Rooms (most units)
- Stacked washer/dryer
- Foyer/Mud Room with Seat
- Terrace

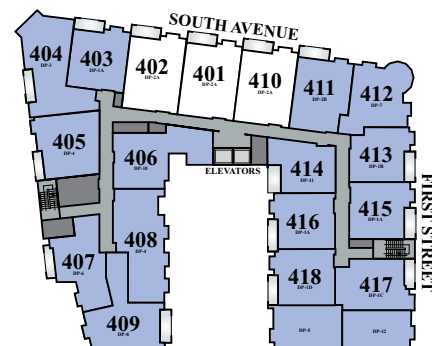
Soho

AT FANWOOD STATION

282 South Avenue
Fanwood, NJ 07023
908-224-5820

Email: Soho@AptRentNJ.com

AptRentNJ.com

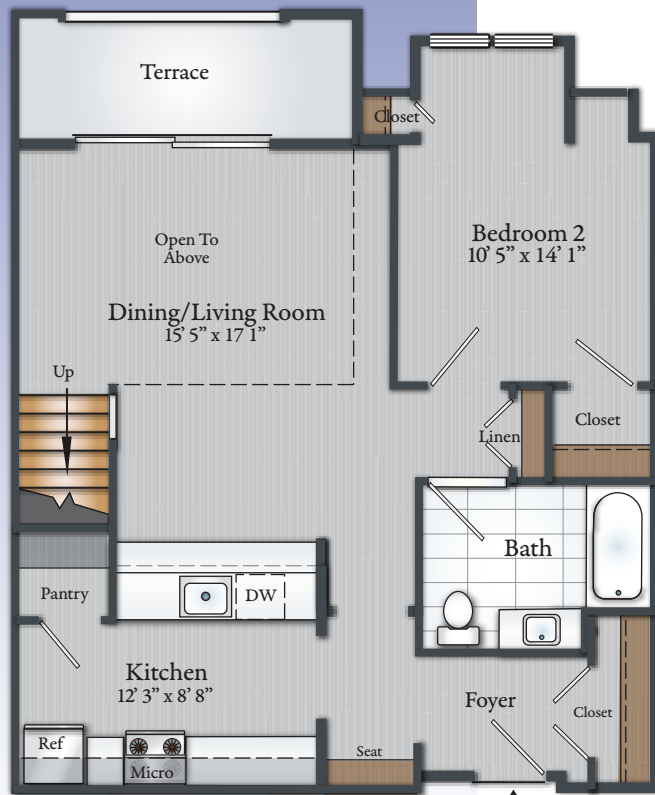


KEY MAP

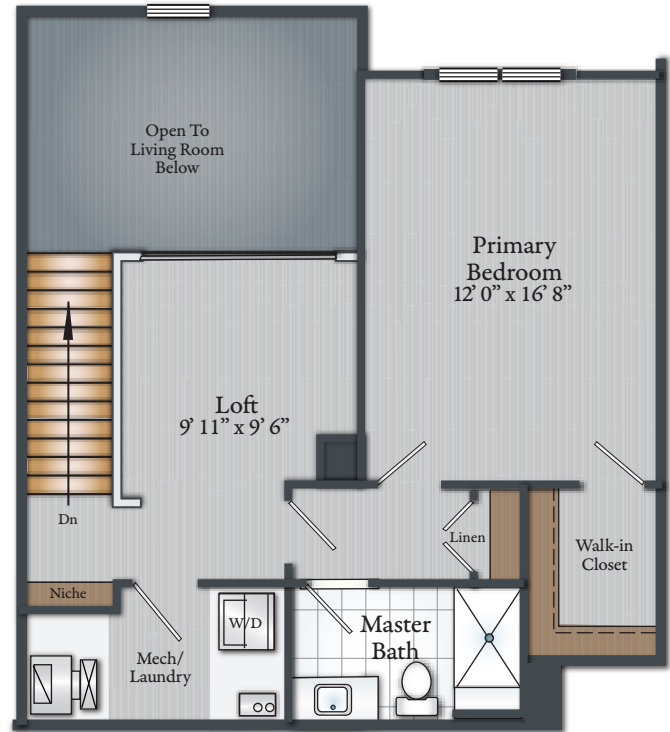
FOURTH FLOOR

2 BEDROOM 2 BATH DUPLEX WITH LOFT

Approx. 1,419 Sq. Ft.
inclusive of 71 Sq. Ft. Terrace
#403



FIRST LEVEL



SECOND LEVEL

- Modern Kitchen
- Stainless steel appliances
- Quartz countertops
- Breakfast bar with pendant lights
- Luxury plank flooring
- Large Primary Bedroom Suite with walk-in closet and Bath
- Ceiling fans in Bedrooms and Living Room
- Stacked washer/dryer
- Terrace

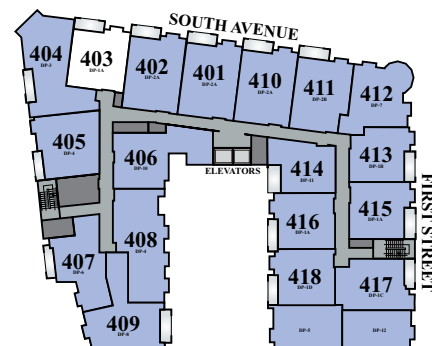
Soho

AT FANWOOD STATION

282 South Avenue
Fanwood, NJ 07023
908-224-5820

Email: Soho@AptRentNJ.com

AptRentNJ.com

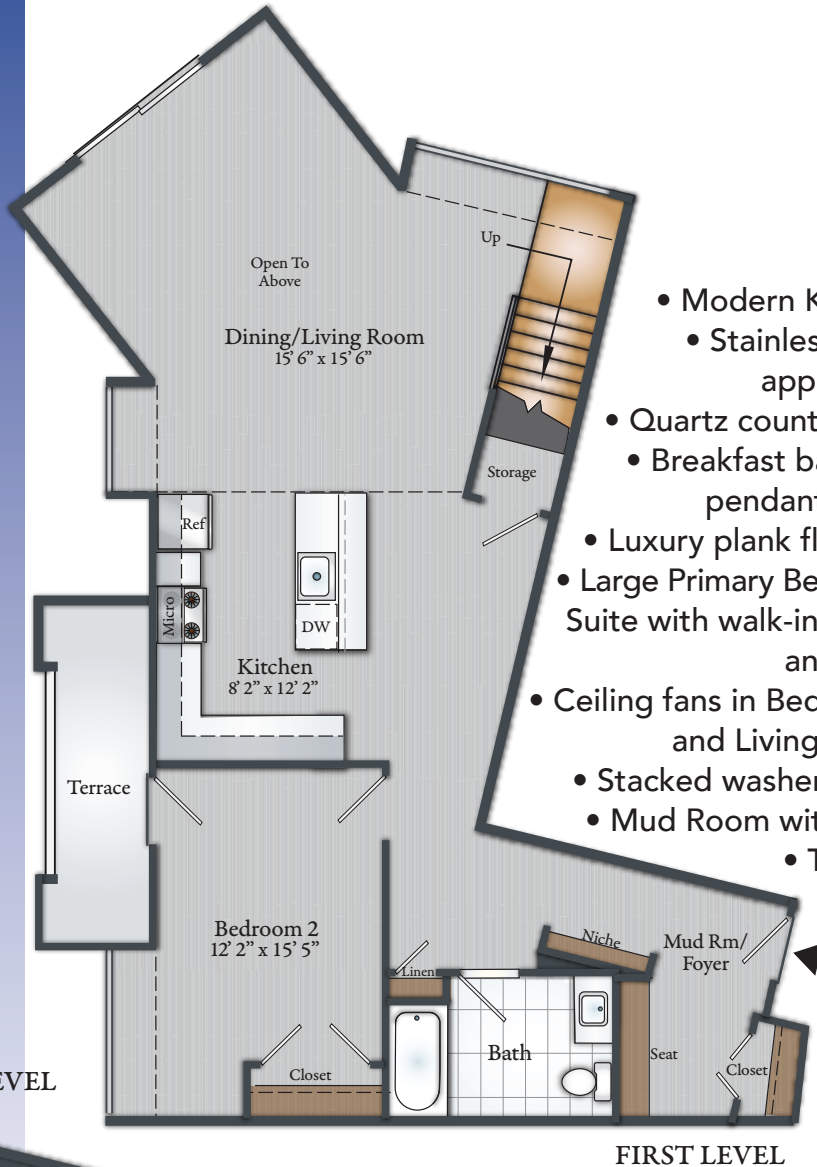
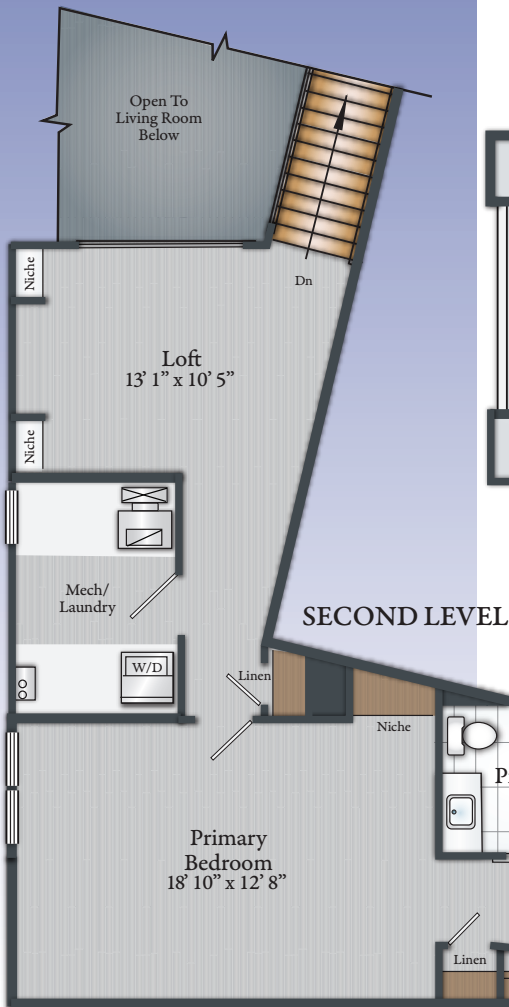


KEY MAP

FOURTH FLOOR

2 BEDROOM 2 BATH DUPLEX WITH LOFT

Approx. 1,783 Sq. Ft.
inclusive of 75 Sq. Ft. Terrace
#404



- Modern Kitchen
- Stainless steel appliances
- Quartz countertops
- Breakfast bar with pendant lights
- Luxury plank flooring
- Large Primary Bedroom Suite with walk-in closet and Bath
- Ceiling fans in Bedrooms and Living Room
- Stacked washer/dryer
- Mud Room with Seat
- Terrace

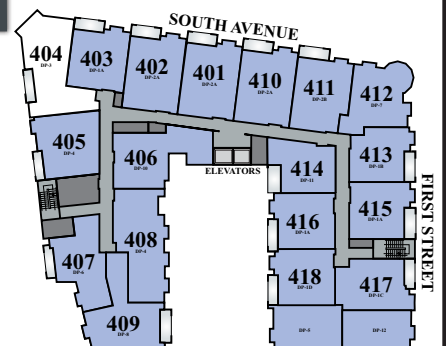
Soho

AT FANWOOD STATION

282 South Avenue
Fanwood, NJ 07023
908-224-5820

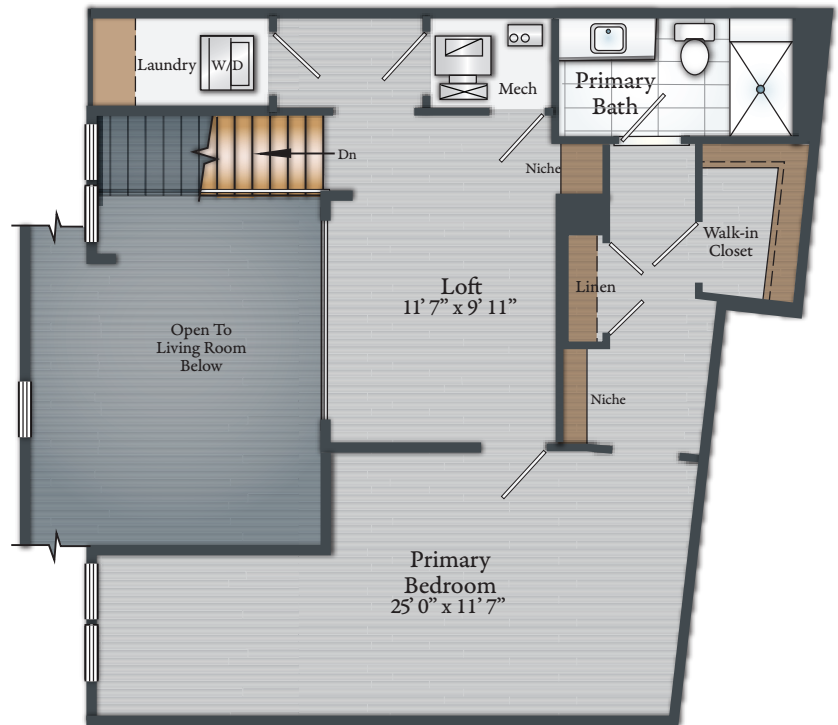
Email: Soho@AptRentNJ.com

AptRentNJ.com

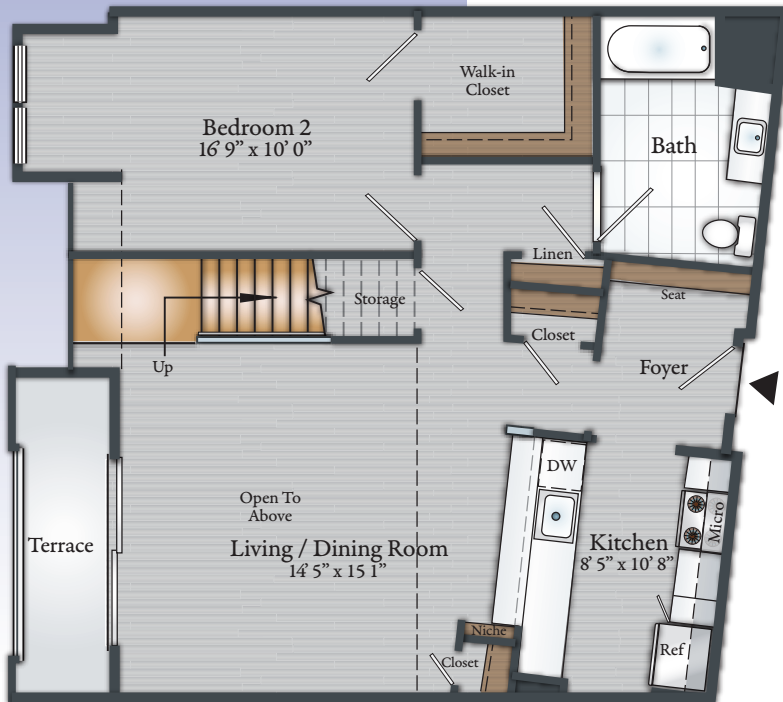


2 BEDROOM 2 BATH DUPLEX WITH LOFT

Approx. 1,613 Sq. Ft.
inclusive of 56 Sq. Ft. Terrace
#405



SECOND LEVEL



FIRST LEVEL

- Modern Kitchen
- Stainless steel appliances
- Quartz countertops
- Breakfast bar with pendant lights
- Luxury plank flooring
- Large Primary Bedroom Suite with walk-in closet and Bath
- Ceiling fans in Bedrooms and Living Room
- Stacked washer/dryer
- Foyer with Seat
- Terrace

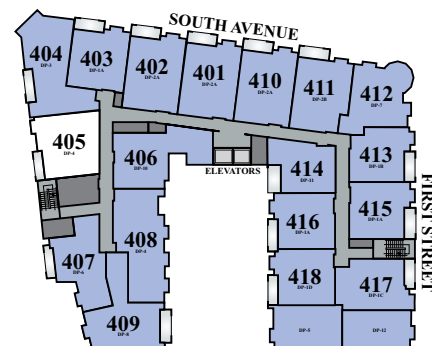
Soho

AT FANWOOD STATION

282 South Avenue
Fanwood, NJ 07023
908-224-5820

Email: Soho@AptRentNJ.com

AptRentNJ.com



KEY MAP

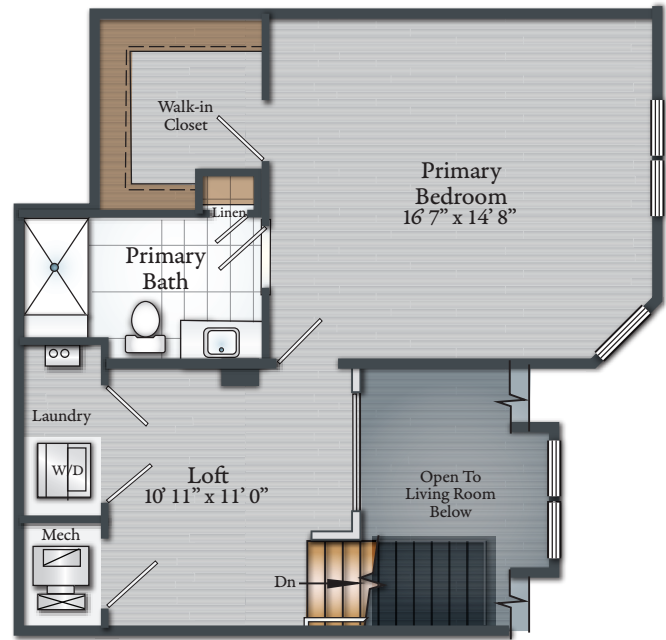
FOURTH FLOOR

2 BEDROOM 2 BATH DUPLEX WITH LOFT

Approx. 1,652 Sq. Ft.
inclusive of 43 Sq. Ft. Terrace

#406

- Modern Kitchen
- Stainless steel appliances
- Quartz countertops
- Breakfast bar with pendant lights
- Luxury plank flooring
- Large Primary Bedroom Suite with walk-in closet and Bath
- Ceiling fans in Bedrooms and Living Room
- Stacked washer/dryer
- Office/Den
- Terrace



SECOND LEVEL



FIRST LEVEL

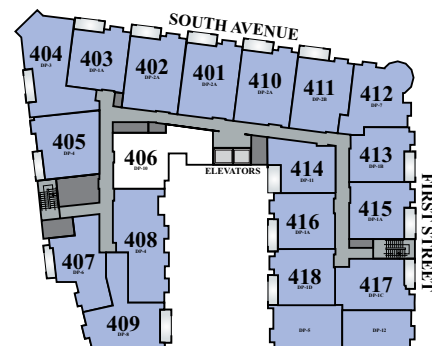
Soho

AT FANWOOD STATION

282 South Avenue
Fanwood, NJ 07023
908-224-5820

Email: Soho@AptRentNJ.com

AptRentNJ.com



KEY MAP

FOURTH FLOOR

2 BEDROOM 3 BATH DUPLEX WITH LOFT

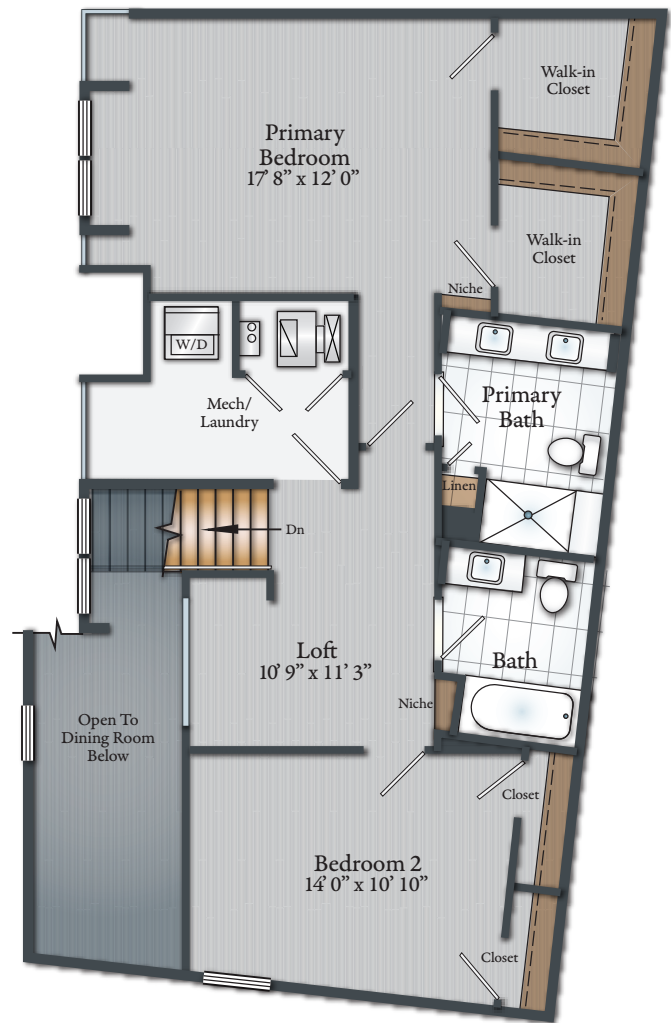
Approx. 1,757 Sq. Ft.
inclusive of 67 Sq. Ft. Terrace

#407

- Modern Kitchen
- Stainless steel appliances
- Quartz countertops
- Breakfast bar with pendant lights



FIRST LEVEL



SECOND LEVEL

- Luxury plank flooring
- Large Primary Bedroom Suite with walk-in closet and Bath
- Ceiling fans in Bedrooms and Living Room
- Stacked washer/dryer
- Terrace

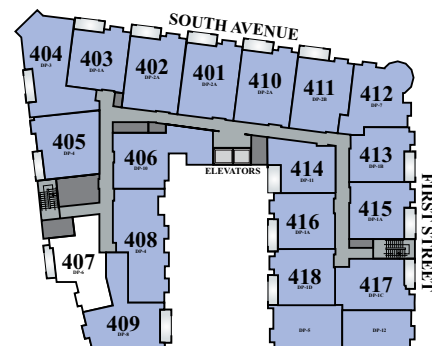
Soho

AT FANWOOD STATION

282 South Avenue
Fanwood, NJ 07023
908-224-5820

Email: Soho@AptRentNJ.com

AptRentNJ.com



KEY MAP

FOURTH FLOOR

2 BEDROOM 2 BATH DUPLEX WITH LOFT

Approx. 1,892 Sq. Ft.
inclusive of 49 Sq. Ft. Terrace

#408

- Modern Kitchen
- Stainless steel appliances
- Quartz counter-tops
- Breakfast bar with pendant lights
- Luxury plank flooring
- Large Primary Bedroom Suite with walk-in closet and Bath
- Ceiling fans in Bedrooms and Living Room
- Stacked washer/dryer
- Terrace

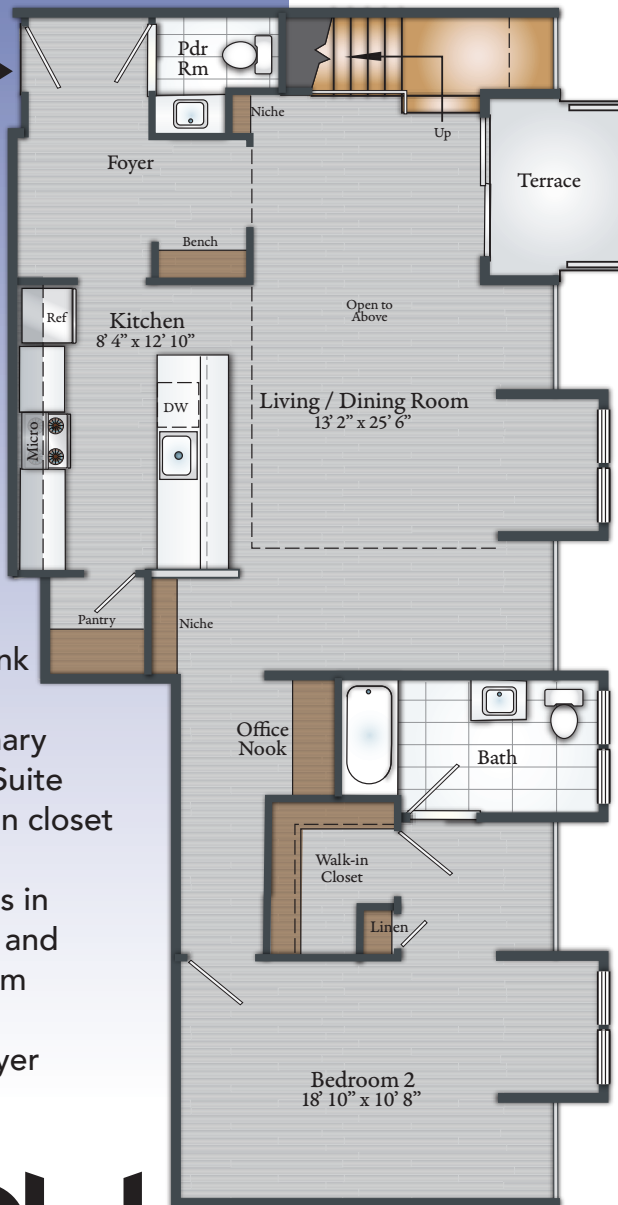
Soho

AT FANWOOD STATION

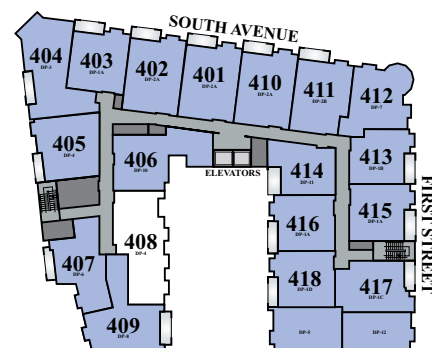
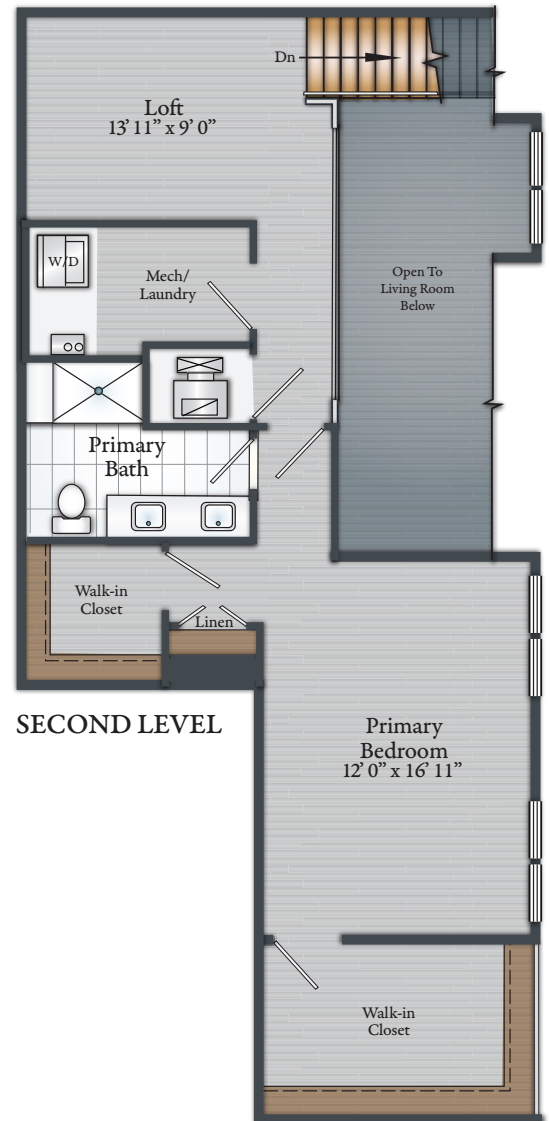
282 South Avenue
Fanwood, NJ 07023
908-224-5820

Email: Soho@AptRentNJ.com
AptRentNJ.com

FIRST LEVEL



SECOND LEVEL



KEY MAP

FOURTH FLOOR

2 BEDROOM 2 BATH DUPLEX WITH LOFT

Approx. 1,857 Sq. Ft.
inclusive of 80 Sq. Ft. Terrace
#409

- Modern Kitchen
- Stainless steel appliances
- Quartz countertops
- Breakfast bar with pendant lights
- Luxury plank flooring



- Large Primary Bedroom Suite with walk-in closet and Bath
- Ceiling fans in bedrooms and Living Room
- Stacked washer/dryer
- Terrace

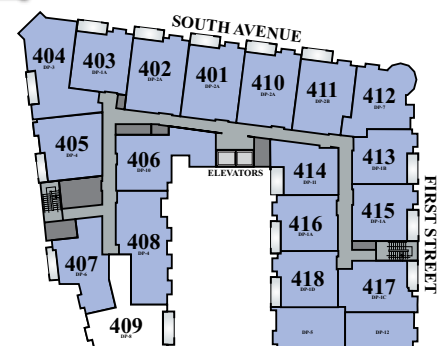
Soho

AT FANWOOD STATION

282 South Avenue
Fanwood, NJ 07023
908-224-5820

Email: Soho@AptRentNJ.com

AptRentNJ.com

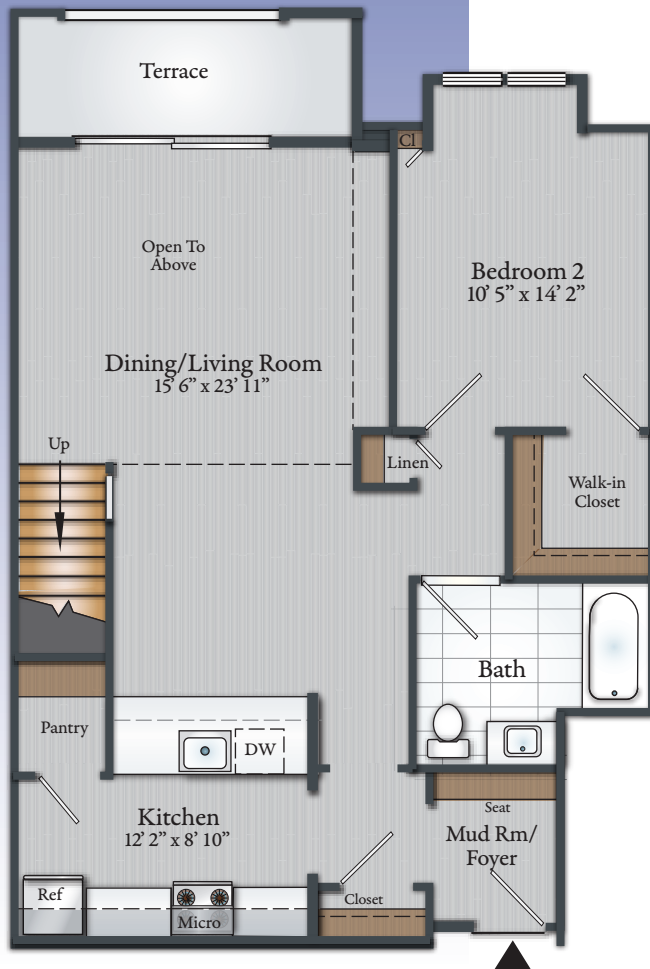


KEY MAP

FOURTH FLOOR

2 BEDROOM 2 BATH DUPLEX WITH LOFT

Approx. 1,524 Sq. Ft.
inclusive of 71 Sq. Ft. Terrace
#411



FIRST LEVEL

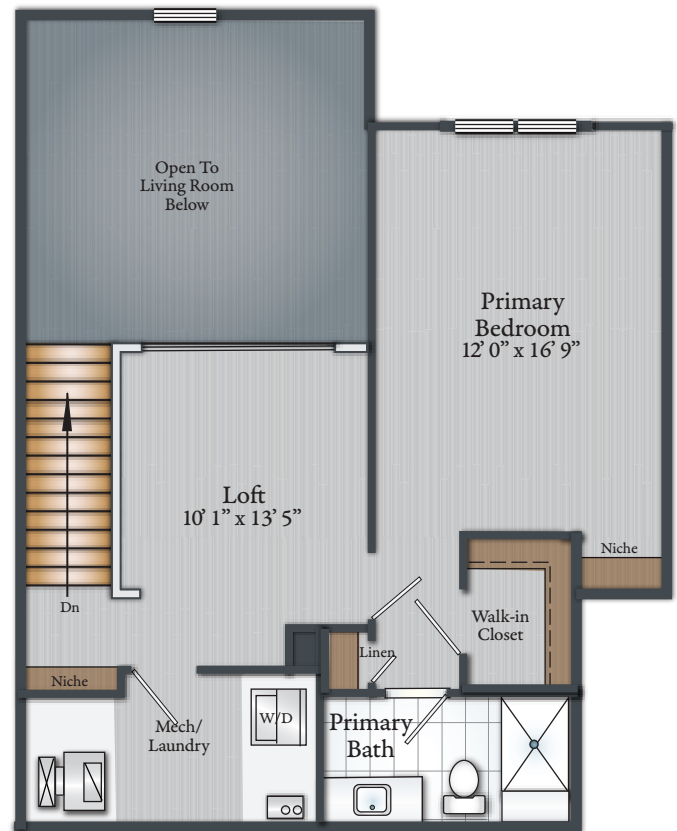
Soho

AT FANWOOD STATION

282 South Avenue
Fanwood, NJ 07023
908-224-5820

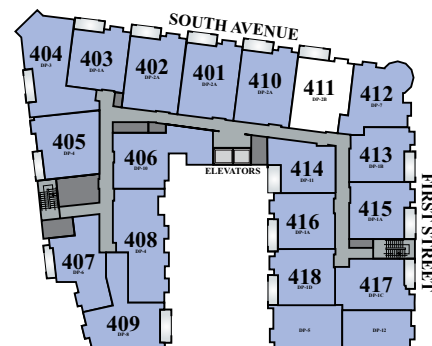
Email: Soho@AptRentNJ.com

AptRentNJ.com



SECOND LEVEL

- Modern Kitchen
- Stainless steel appliances
- Quartz countertops
- Breakfast bar with pendant lights
- Luxury plank flooring
- Large Primary Bedroom Suite with walk-in closet and Bath
- Ceiling fans in Bedrooms and Living Room
- Stacked washer/dryer
- Office/Den
- Mud Room/Foyer with seat
- Terrace



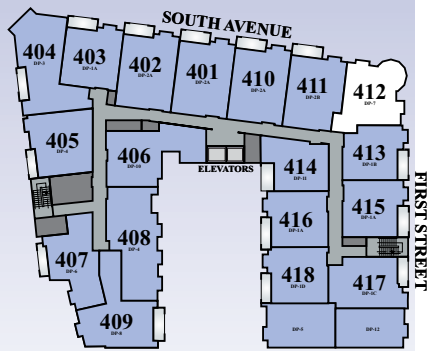
KEY MAP

FOURTH FLOOR

2 BEDROOM 2 BATH DUPLEX WITH LOFT

Approx. 1,423 Sq. Ft.
#412

- Modern Kitchen
- Stainless steel appliances
- Quartz countertops
- Breakfast bar with pendant lights
- Luxury plank flooring
- Large Primary Bedroom Suite with large walk-in closet and Bath
- Ceiling fans in Bedrooms and Living Room
- Stacked washer/dryer



KEY MAP

FOURTH FLOOR

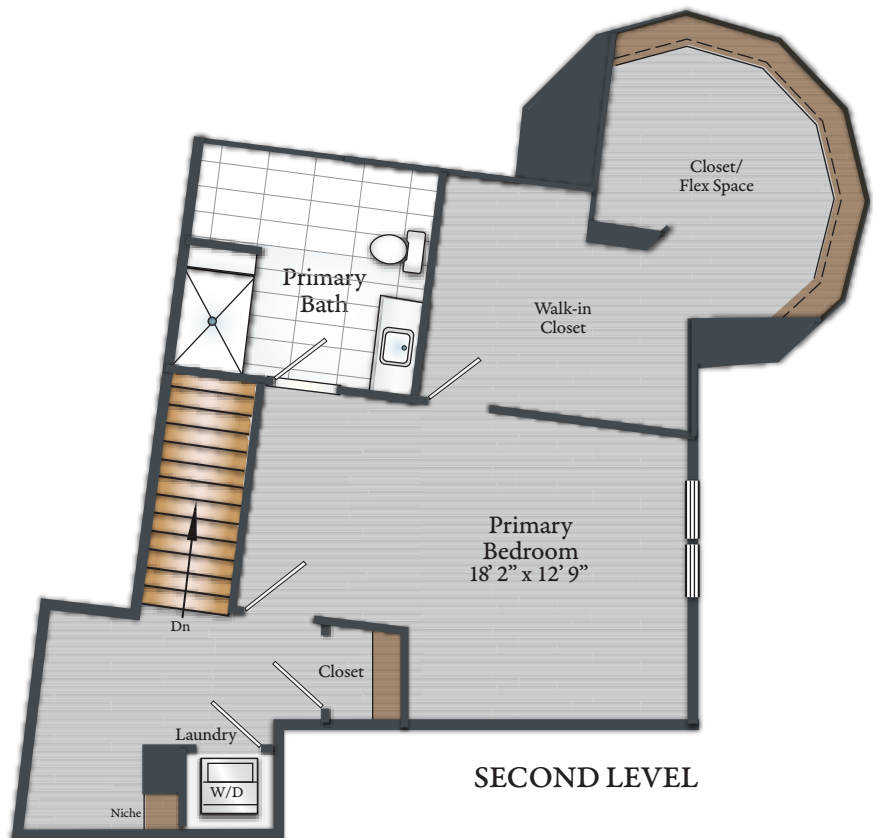
Soho

AT FANWOOD STATION

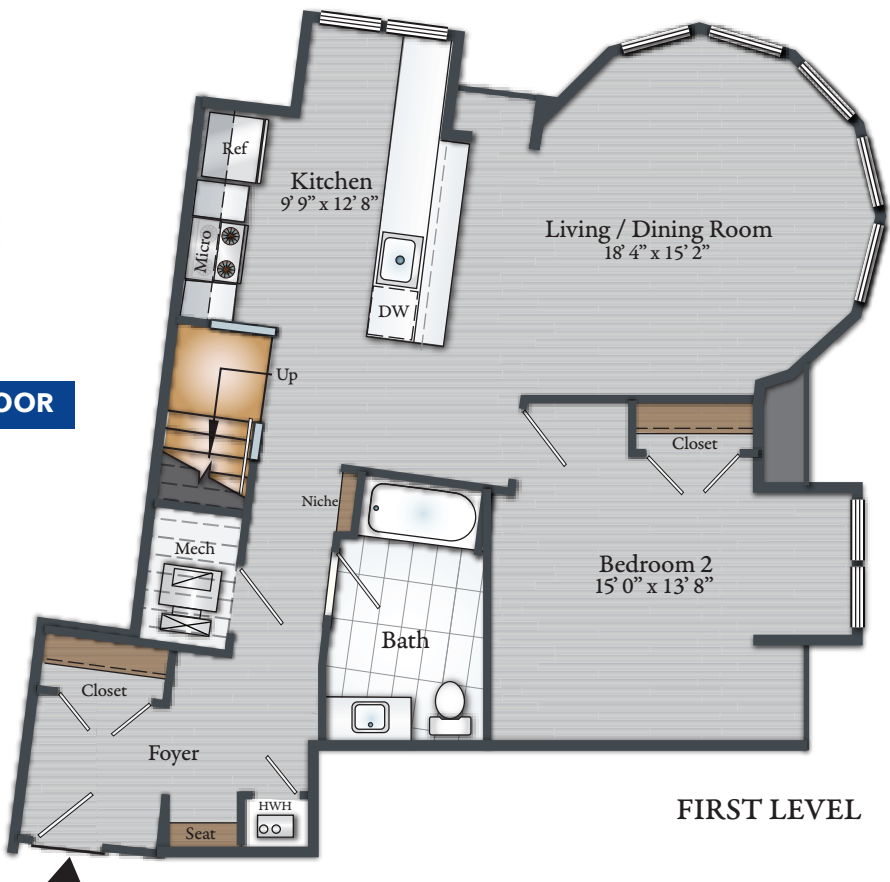
282 South Avenue
Fanwood, NJ 07023
908-224-5820

Email: Soho@AptRentNJ.com

AptRentNJ.com



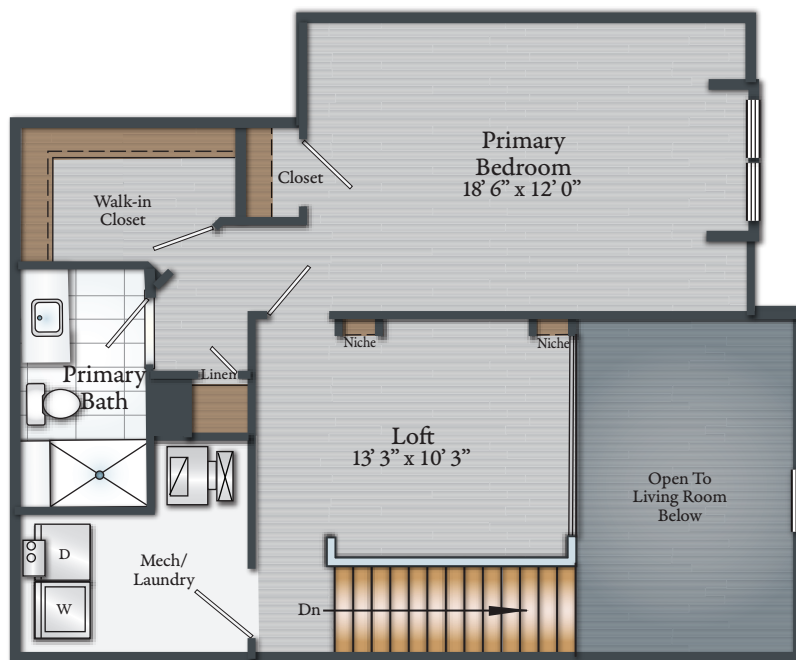
SECOND LEVEL



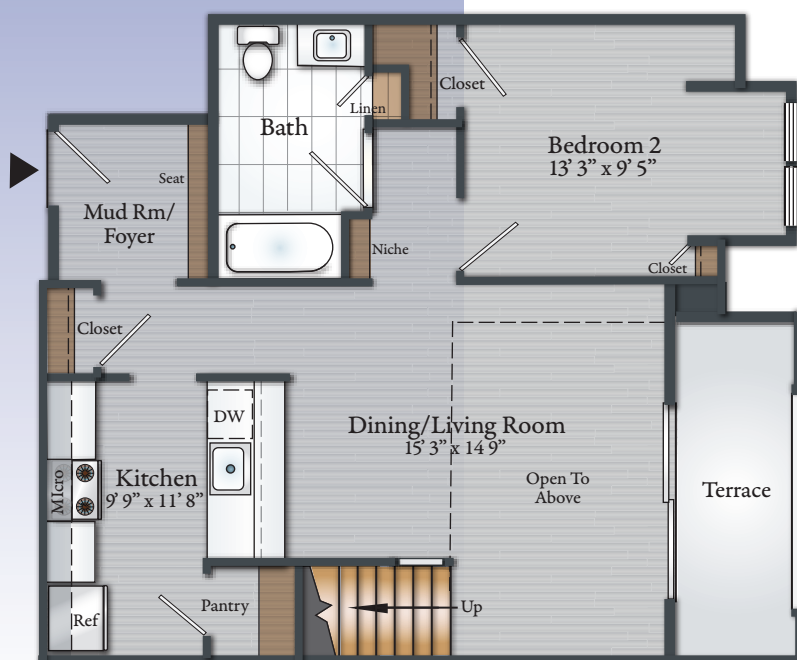
FIRST LEVEL

2 BEDROOM 2 BATH DUPLEX WITH LOFT

Approx. 1,413 Sq. Ft.
inclusive of 71 Sq. Ft. Terrace
#413



SECOND LEVEL



FIRST LEVEL

- Modern Kitchen
- Stainless steel appliances
- Quartz countertops
- Breakfast bar with pendant lights
- Luxury plank flooring
- Large Primary Bedroom Suite with walk-in closet and Bath
- Ceiling fans in Bedrooms and Living Room
- Stacked washer/dryer
- Mud Room/Foyer with seat
- Terrace

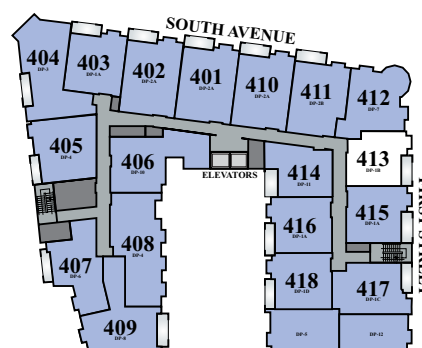
Soho

AT FANWOOD STATION

282 South Avenue
Fanwood, NJ 07023
908-224-5820

Email: Soho@AptRentNJ.com

AptRentNJ.com

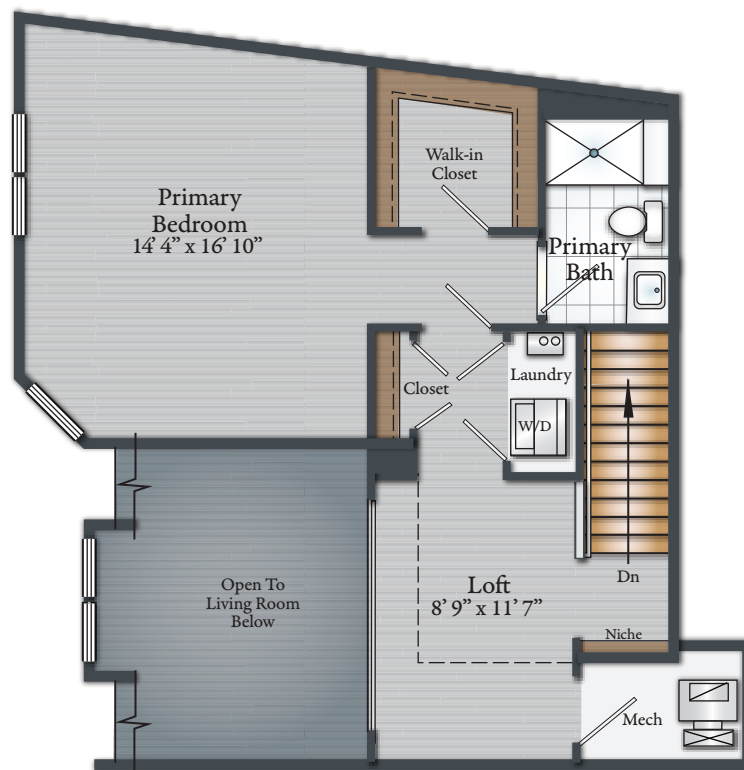


KEY MAP

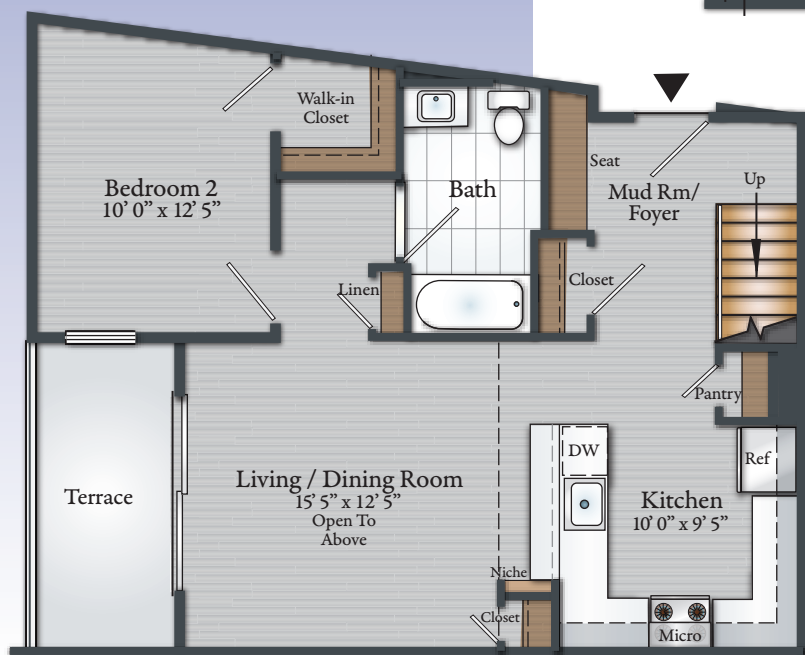
FOURTH FLOOR

2 BEDROOM 2 BATH DUPLEX WITH LOFT

Approx. 1,395 Sq. Ft.
inclusive of 79 Sq. Ft. Terrace
#414



SECOND LEVEL



FIRST LEVEL

- Modern Kitchen
- Stainless steel appliances
- Quartz countertops
- Breakfast bar with pendant lights
- Luxury plank flooring
- Large Primary Bedroom Suite with walk-in closet and Bath
- Ceiling fans in Bedrooms and Living Room
- Stacked washer/dryer
- Mud Room/Foyer with seat
- Terrace

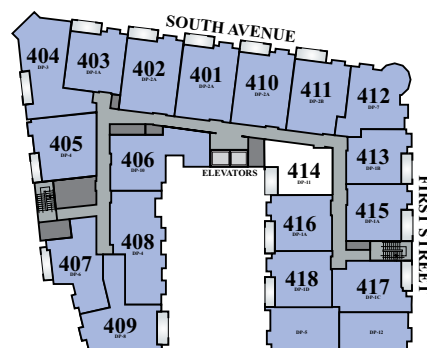
Soho

AT FANWOOD STATION

282 South Avenue
Fanwood, NJ 07023
908-224-5820

Email: Soho@AptRentNJ.com

AptRentNJ.com

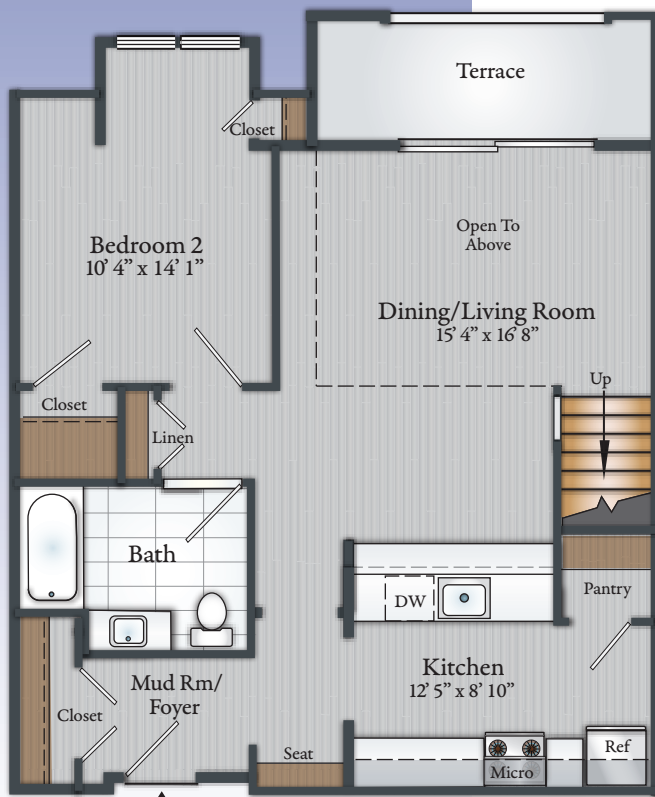


KEY MAP

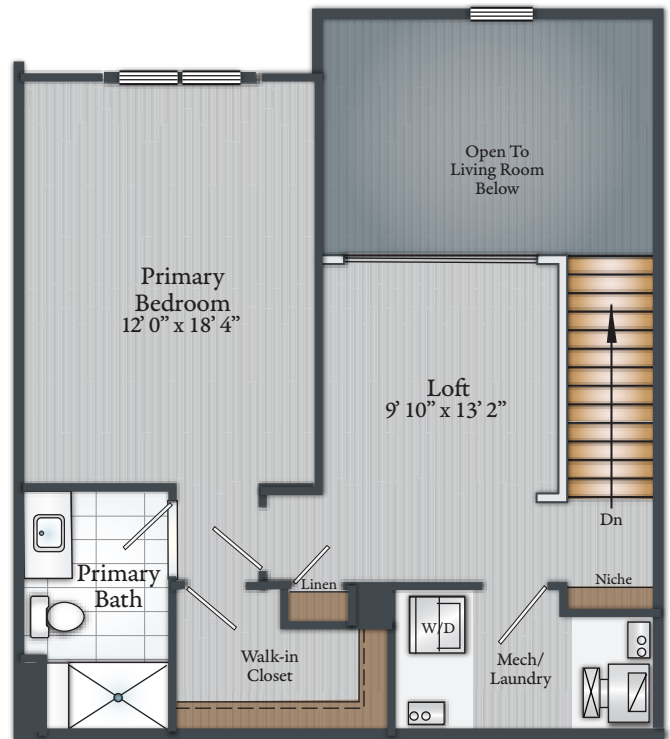
FOURTH FLOOR

2 BEDROOM 2 BATH DUPLEX WITH LOFT

Approx. 1,419 Sq. Ft.
inclusive of 71 Sq. Ft. Terrace
#415



FIRST LEVEL



SECOND LEVEL

- Modern Kitchen
- Stainless steel appliances
- Quartz countertops
- Breakfast bar with pendant lights
- Luxury plank flooring
- Large Primary Bedroom Suite with walk-in closet and Bath
- Ceiling fans in Bedrooms and Living Room
- Stacked washer/dryer
- Mud Room/Foyer with seat
- Terrace

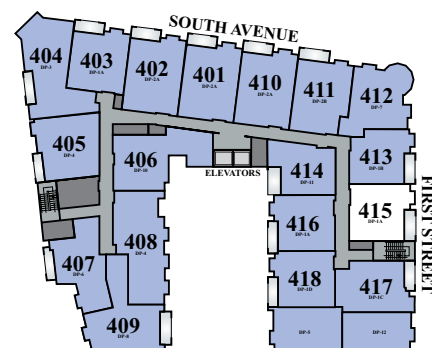
Soho

AT FANWOOD STATION

282 South Avenue
Fanwood, NJ 07023
908-224-5820

Email: Soho@AptRentNJ.com

AptRentNJ.com

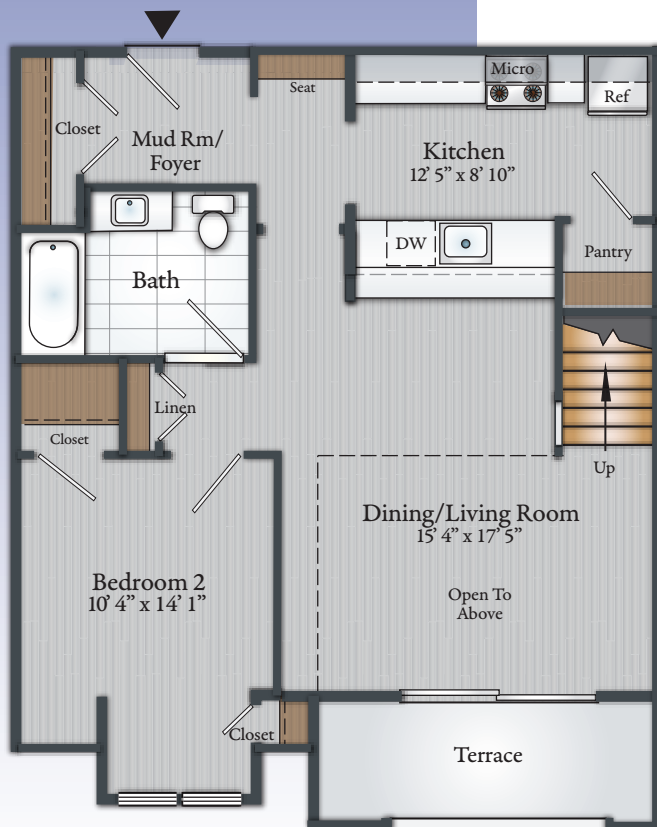


KEY MAP

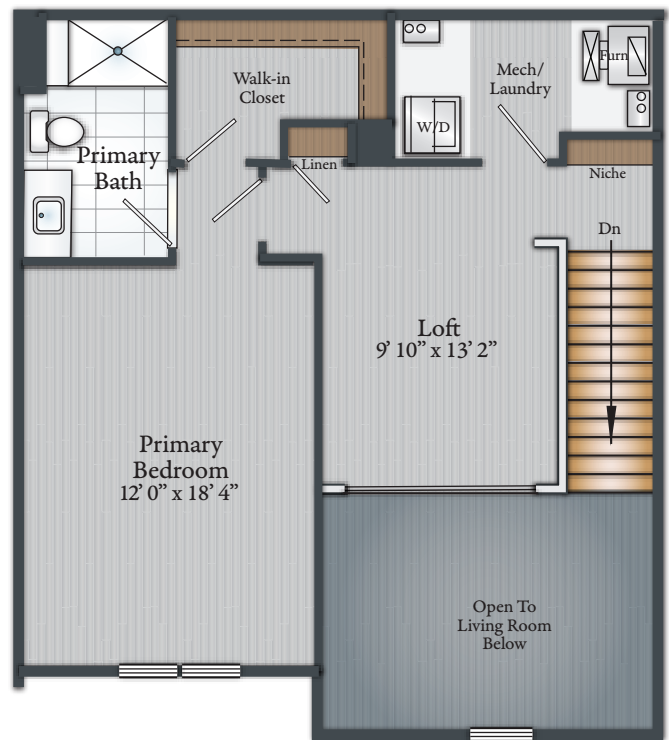
FOURTH FLOOR

2 BEDROOM 2 BATH DUPLEX WITH LOFT

Approx. 1,421 Sq. Ft.
inclusive of 72 Sq. Ft. Terrace
#416



FIRST LEVEL



SECOND LEVEL

- Modern Kitchen
- Stainless steel appliances
- Quartz countertops
- Breakfast bar with pendant lights
- Luxury plank flooring
- Large Primary Bedroom Suite with walk-in closet and Bath
- Ceiling fans in Bedrooms and Living Room
- Stacked washer/dryer
- Mud Room/Foyer with seat
- Terrace

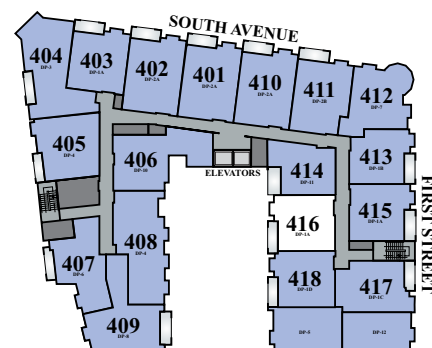
Soho

AT FANWOOD STATION

282 South Avenue
Fanwood, NJ 07023
908-224-5820

Email: Soho@AptRentNJ.com

AptRentNJ.com



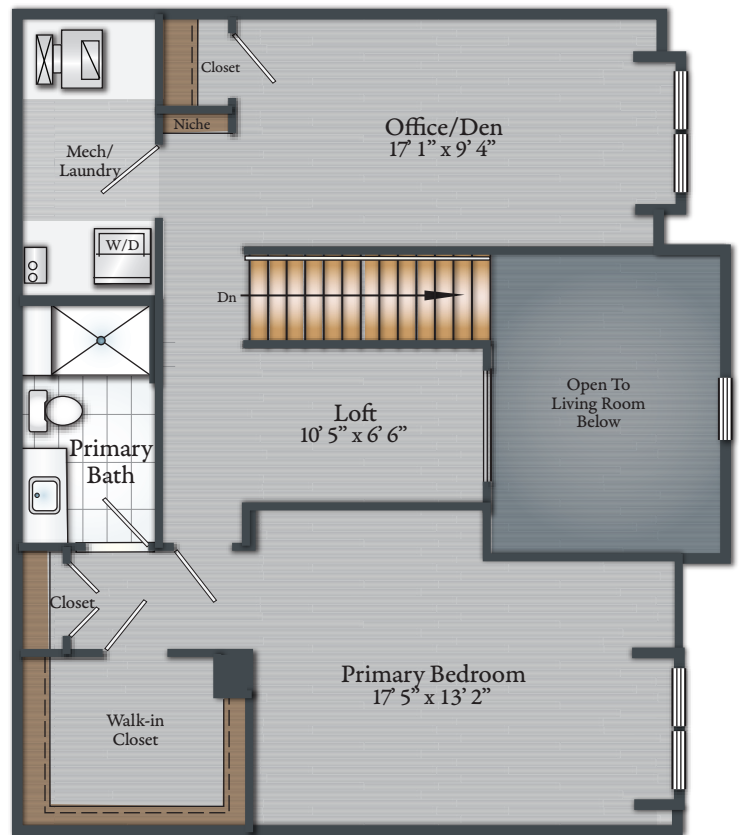
KEY MAP

FOURTH FLOOR

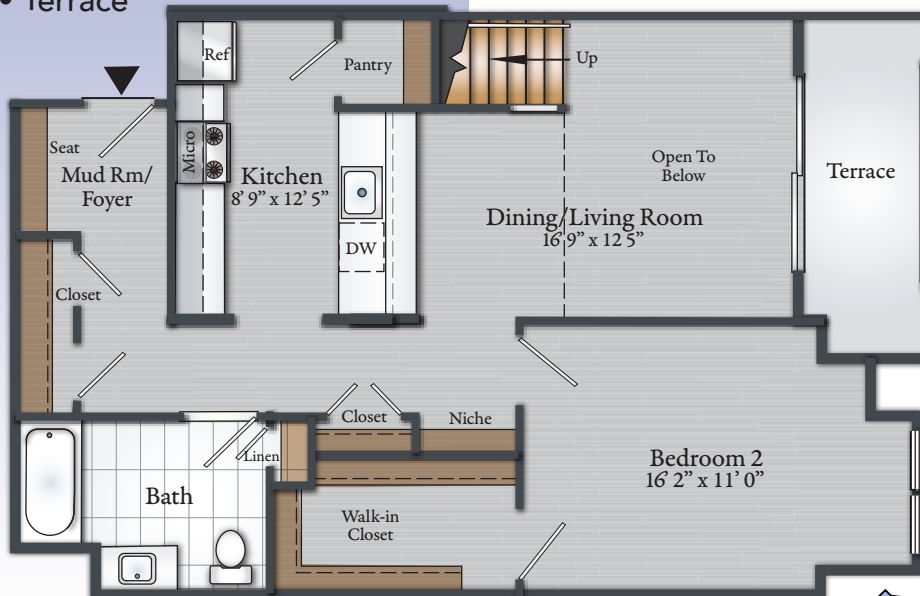
2 BEDROOM 2 BATH DUPLEX WITH LOFT

Approx. 1,687 Sq. Ft.
inclusive of 70 Sq. Ft. Terrace
#417

- Modern Kitchen
- Stainless steel appliances
- Quartz countertops
- Breakfast bar with pendant lights
- Luxury plank flooring
- Large Primary Bedroom Suite with walk-in closet and Bath
- Ceiling fans in Bedrooms and Living Room
- Stacked washer/dryer
- Mud Room/Foyer with seat
- Terrace



SECOND LEVEL



FIRST LEVEL

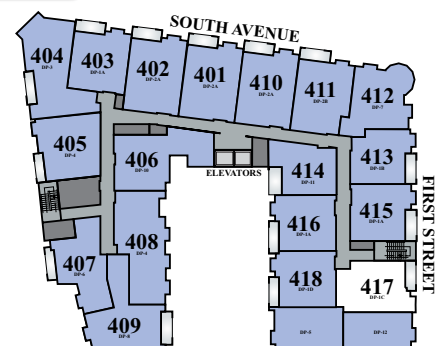
Soho

AT FANWOOD STATION

282 South Avenue
Fanwood, NJ 07023
908-224-5820

Email: Soho@AptRentNJ.com

AptRentNJ.com



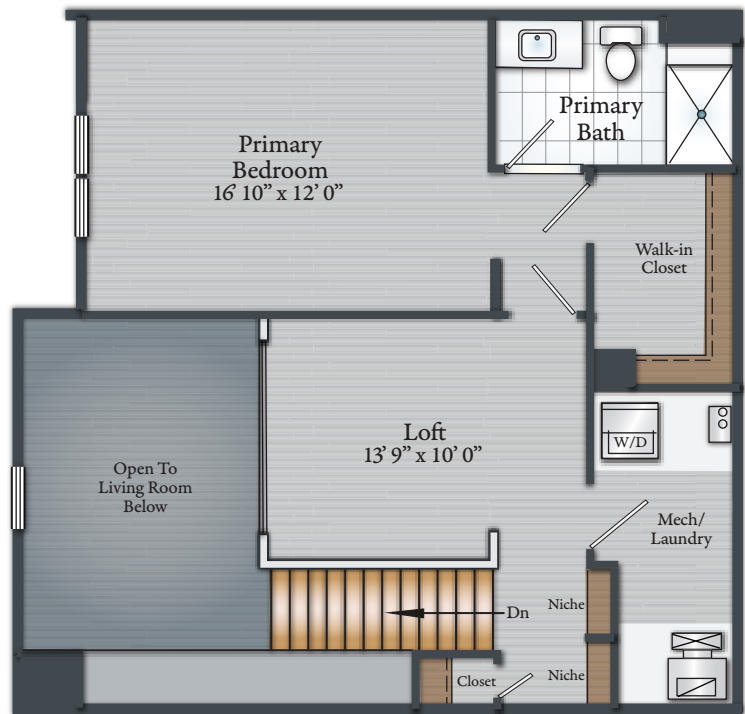
KEY MAP

FOURTH FLOOR

2 BEDROOM 2 BATH DUPLEX WITH LOFT

Approx. 1,477 Sq. Ft.
inclusive of 71 Sq. Ft. Terrace
#418

- Modern Kitchen
- Stainless steel appliances
- Quartz countertops
- Breakfast bar with pendant lights
- Luxury plank flooring
- Large Primary Bedroom Suite with walk-in closet and Bath
- Ceiling fans in Bedrooms and Living Room
- Stacked washer/dryer
- Mud Room/Foyer with seat
- Terrace



SECOND LEVEL

FIRST LEVEL



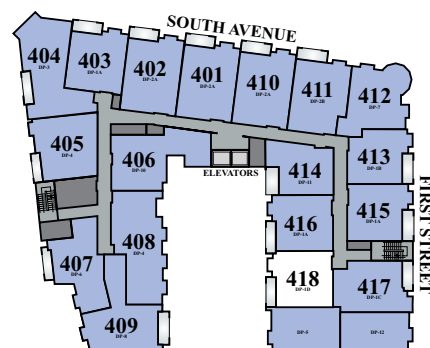
Soho

AT FANWOOD STATION

282 South Avenue
Fanwood, NJ 07023
908-224-5820

Email: Soho@AptRentNJ.com

AptRentNJ.com



KEY MAP

FOURTH FLOOR