

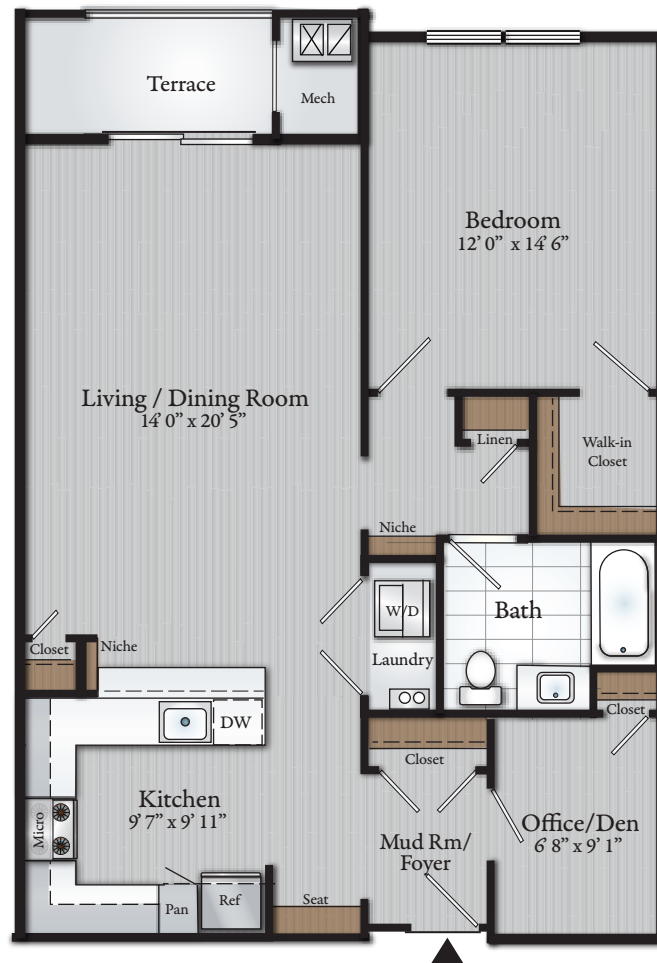
1 BEDROOM 1 BATH FLAT

Approx. 1,036 Sq. Ft.
inclusive of 54 Sq. Ft. Terrace

#201, #202, #211

#301, #302, #311

- Modern Kitchen
- Stainless steel appliances
- Quartz countertops
- Breakfast bar with pendant lights
- Luxury plank flooring
- Large bedroom with walk-in closet
- Ceiling fans in Bedrooms and Living Room
- Stacked washer/dryer
- Office/Den
- Mud Room/Foyer with seat
- Terrace



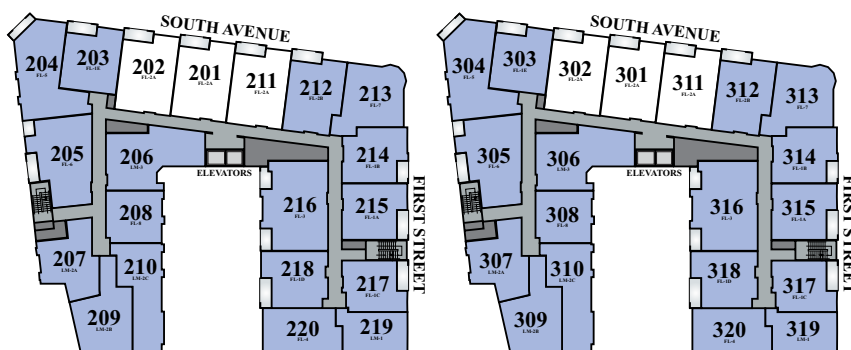
Soho

AT FANWOOD STATION

282 South Avenue
Fanwood, NJ 07023
908-224-5820

Email: Soho@AptRentNJ.com

AptRentNJ.com



SECOND FLOOR

KEY MAP

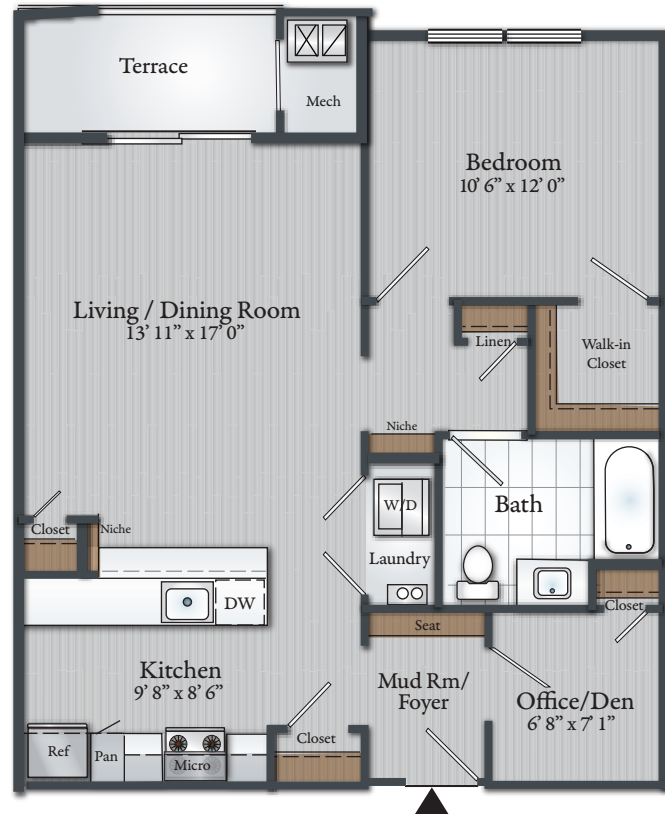
THIRD FLOOR

1 BEDROOM 1 BATH FLAT

Approx. 864 Sq. Ft.
inclusive of 54 Sq. Ft. Terrace

#203, #303

- Modern Kitchen
- Stainless steel appliances
- Quartz countertops
- Breakfast bar with pendant lights
- Luxury plank flooring
- Large bedroom with walk-in closet
- Ceiling fans in Bedrooms and Living Room
- Stacked washer/dryer
- Office/Den
- Mud Room/Foyer with seat
- Terrace



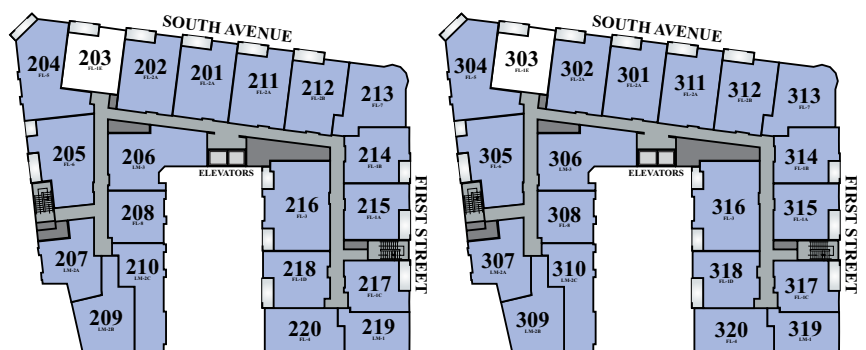
Soho

AT FANWOOD STATION

282 South Avenue
Fanwood, NJ 07023
908-224-5820

Email: Soho@AptRentNJ.com

AptRentNJ.com



SECOND FLOOR

KEY MAP

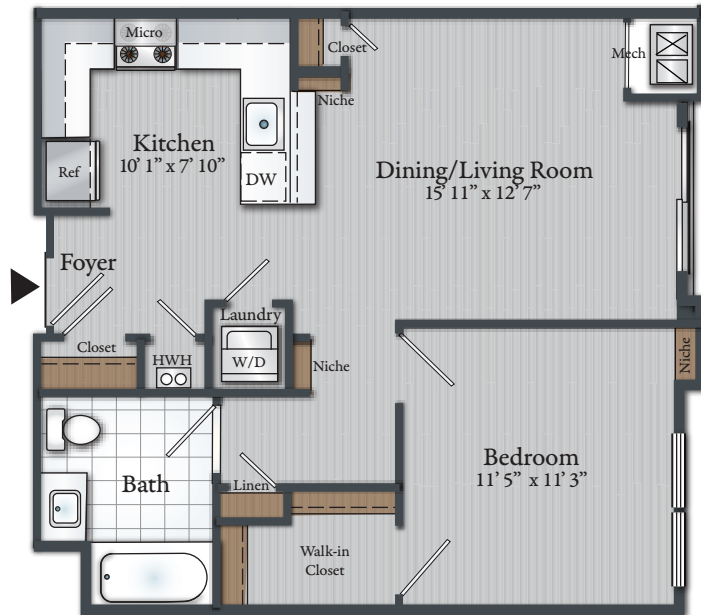
THIRD FLOOR

1 BEDROOM 1 BATH FLAT

Approx. 676 Sq. Ft.
inclusive of 54 Sq. Ft. Terrace

#208, #308

- Modern Kitchen
- Stainless steel appliances
- Quartz countertops
- Breakfast bar with pendant lights
- Luxury plank flooring
- Large bedroom with walk-in closet
- Ceiling fans in Bedrooms and Living Room
- Stacked washer/dryer



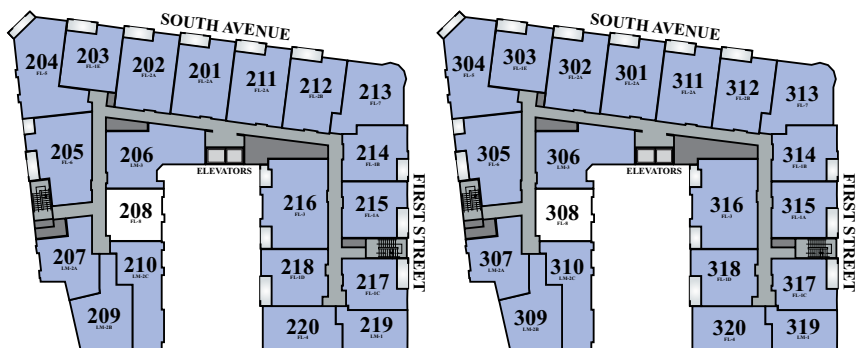
Soho

AT FANWOOD STATION

282 South Avenue
Fanwood, NJ 07023
908-224-5820

Email: Soho@AptRentNJ.com

AptRentNJ.com



SECOND FLOOR

KEY MAP

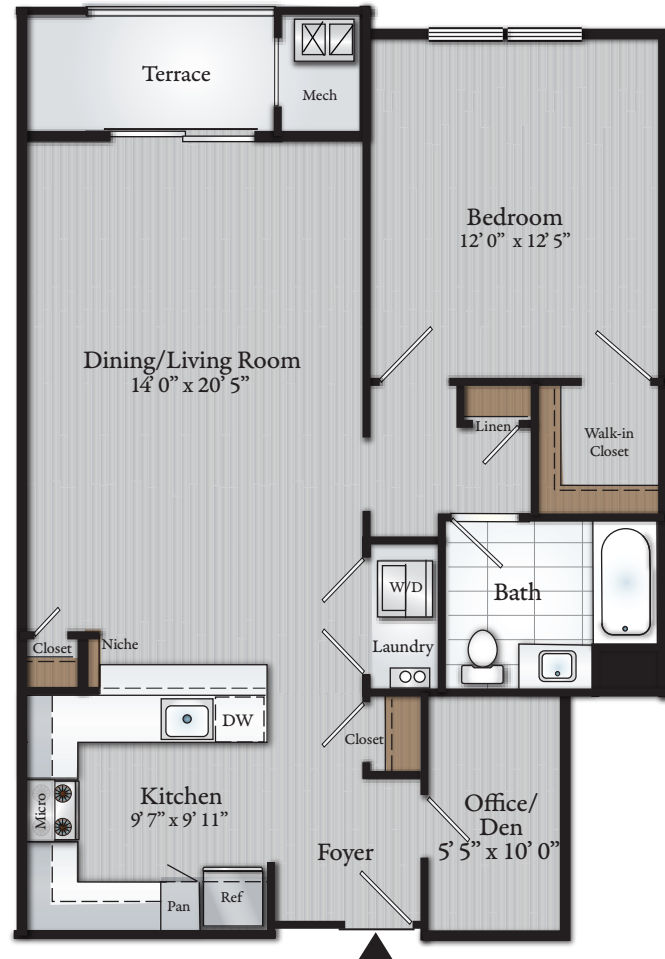
THIRD FLOOR

1 BEDROOM 1 BATH FLAT

Approx. 970 Sq. Ft.

#212, #312

- Modern Kitchen
- Stainless steel appliances
- Quartz countertops
- Breakfast bar with pendant lights
- Luxury plank flooring
- Large Bedroom with walk-in closet
- Ceiling fans in Bedrooms and Living Room
- Stacked washer/dryer
- Office/Den
- Terrace

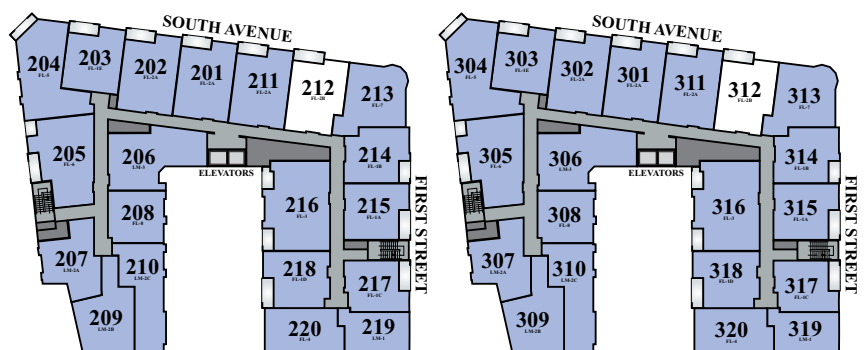


Soho

AT FANWOOD STATION

282 South Avenue
Fanwood, NJ 07023
908-224-5820

Email: Soho@AptRentNJ.com
AptRentNJ.com



SECOND FLOOR

KEY MAP

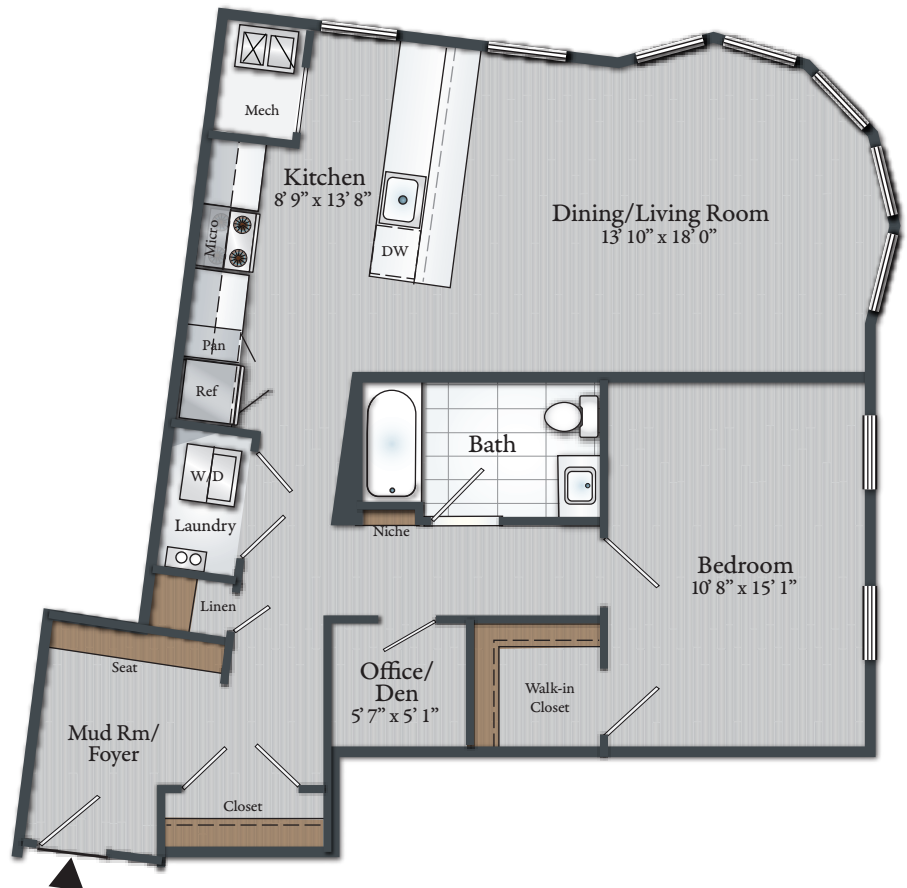
THIRD FLOOR

1 BEDROOM 1 BATH FLAT

Approx. 942 Sq. Ft.

#213, #313

- Modern Kitchen
- Stainless steel appliances
- Quartz countertops
- Breakfast bar with pendant lights
- Luxury plank flooring
- Large Bedroom with walk-in closet
- Ceiling fans in Bedrooms and Living Room
- Stacked washer/dryer
- Office/Den



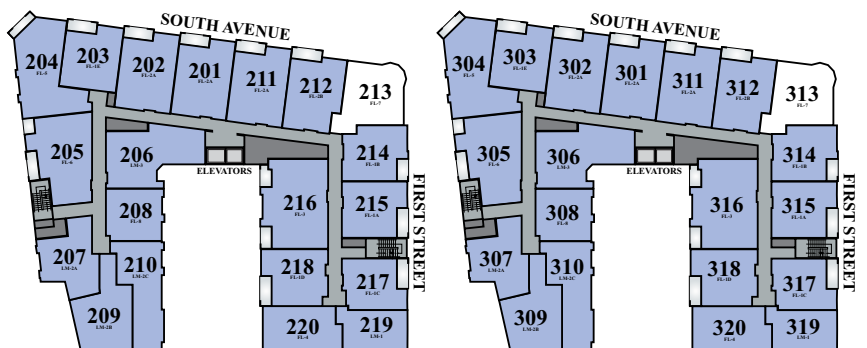
Soho

AT FANWOOD STATION

282 South Avenue
Fanwood, NJ 07023
908-224-5820

Email: Soho@AptRentNJ.com

AptRentNJ.com



SECOND FLOOR

KEY MAP

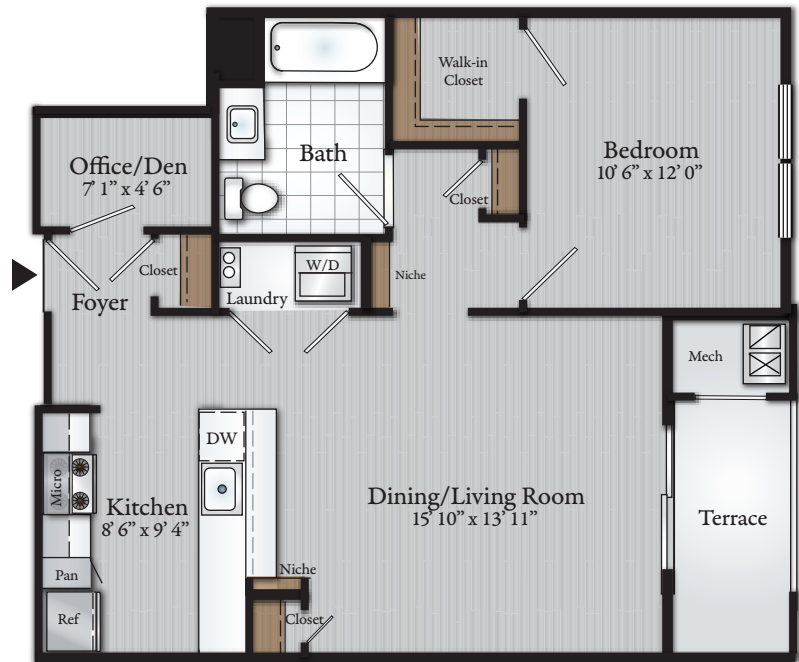
THIRD FLOOR

1 BEDROOM 1 BATH FLAT

Approx. 819 Sq. Ft.
inclusive of 54 Sq. Ft. Terrace

#214, #314

- Modern Kitchen
- Stainless steel appliances
- Quartz countertops
- Breakfast bar with pendant lights
- Luxury plank flooring
- Large Bedroom with walk-in closet
- Ceiling fans in Bedrooms and Living Room
- Stacked washer/dryer
- Office/Den
- Terrace



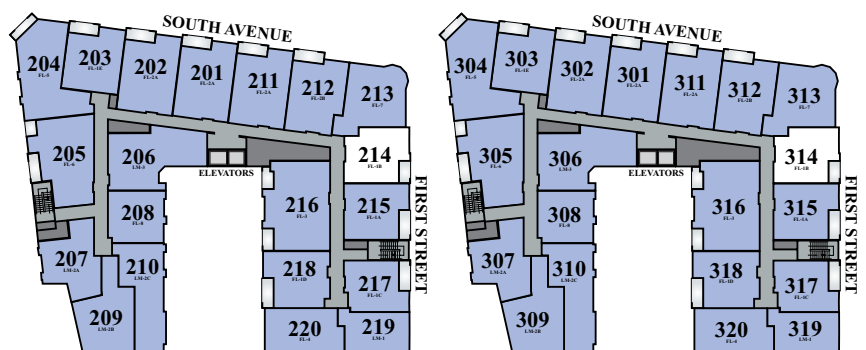
Soho

AT FANWOOD STATION

282 South Avenue
Fanwood, NJ 07023
908-224-5820

Email: Soho@AptRentNJ.com

AptRentNJ.com



SECOND FLOOR

KEY MAP

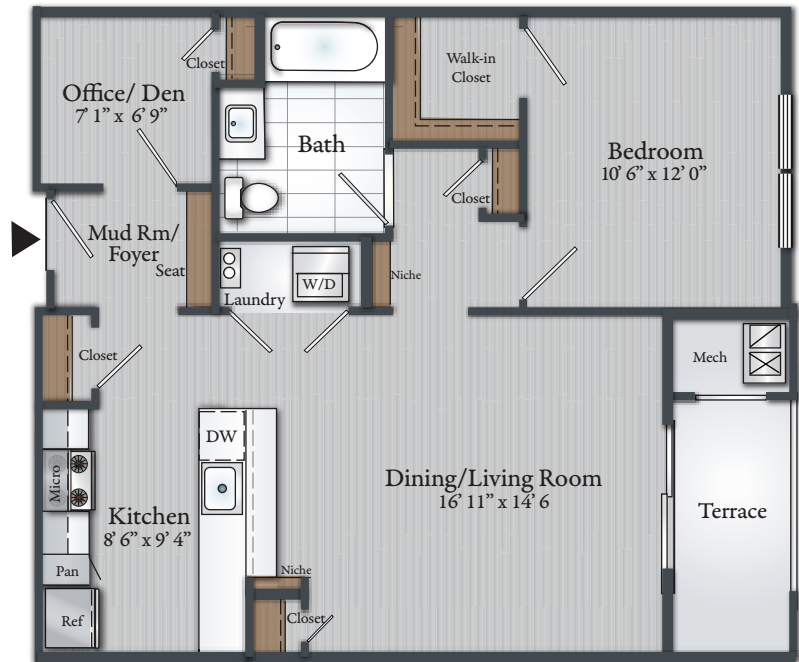
THIRD FLOOR

1 BEDROOM 1 BATH FLAT

Approx. 850 Sq. Ft.
inclusive of 54 Sq. Ft. Terrace

#215, #315

- Modern Kitchen
- Stainless steel appliances
- Quartz countertops
- Breakfast bar with pendant lights
- Luxury plank flooring
- Large Bedroom with walk-in closet
- Ceiling fans in Bedrooms and Living Room
- Stacked washer/dryer
- Office/Den
- Mud Room/Foyer with seat
- Terrace



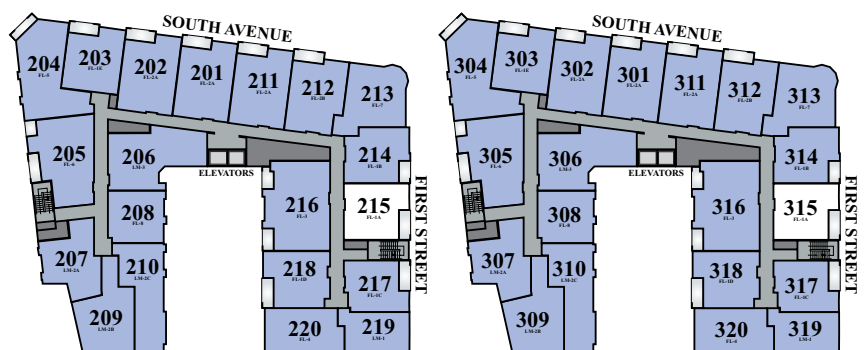
Soho

AT FANWOOD STATION

282 South Avenue
Fanwood, NJ 07023
908-224-5820

Email: Soho@AptRentNJ.com

AptRentNJ.com



SECOND FLOOR

KEY MAP

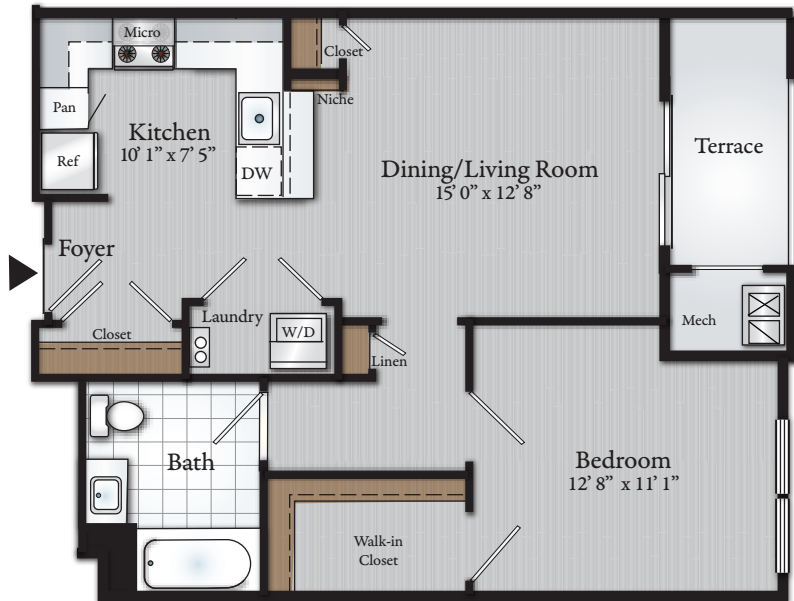
THIRD FLOOR

1 BEDROOM 1 BATH FLAT

Approx. 754 Sq. Ft.
inclusive of 54 Sq. Ft. Terrace

#217, #317

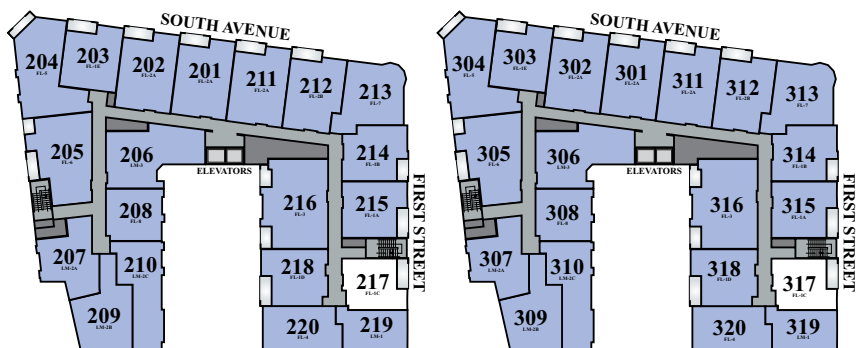
- Modern Kitchen
- Stainless steel appliances
- Quartz countertops
- Breakfast bar with pendant lights
- Luxury plank flooring
- Large Bedroom with walk-in closet
- Ceiling fans in Bedrooms and Living Room
- Stacked washer/dryer
- Terrace



AT FANWOOD STATION

282 South Avenue
Fanwood, NJ 07023
908-224-5820

Email: Soho@AptRentNJ.com
AptRentNJ.com



SECOND FLOOR

KEY MAP

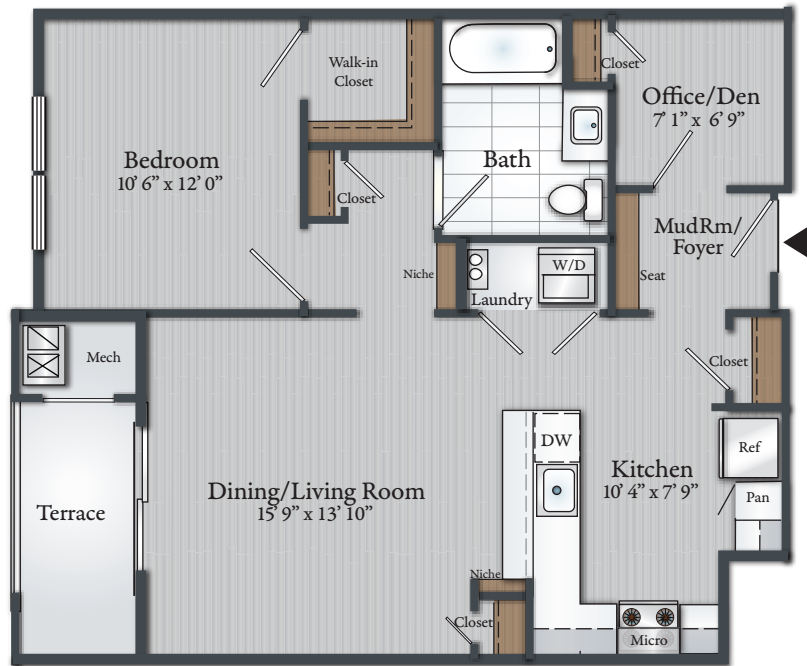
THIRD FLOOR

1 BEDROOM 1 BATH FLAT

Approx. 820 Sq. Ft.
inclusive of 54 Sq. Ft. Terrace

#218, #318

- Modern Kitchen
- Stainless steel appliances
- Quartz countertops
- Breakfast bar with pendant lights
- Luxury plank flooring
- Large Bedroom with walk-in closet
- Ceiling fans in Bedrooms and Living Room
- Stacked washer/dryer
- Office/Den
- Terrace

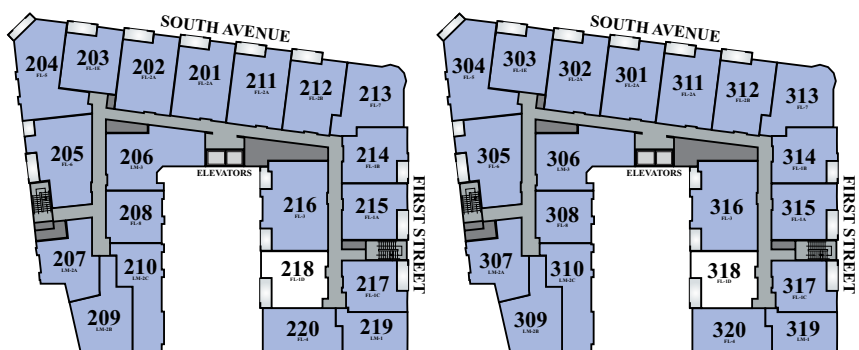


Soho

AT FANWOOD STATION

282 South Avenue
Fanwood, NJ 07023
908-224-5820

Email: Soho@AptRentNJ.com
AptRentNJ.com



SECOND FLOOR

KEY MAP

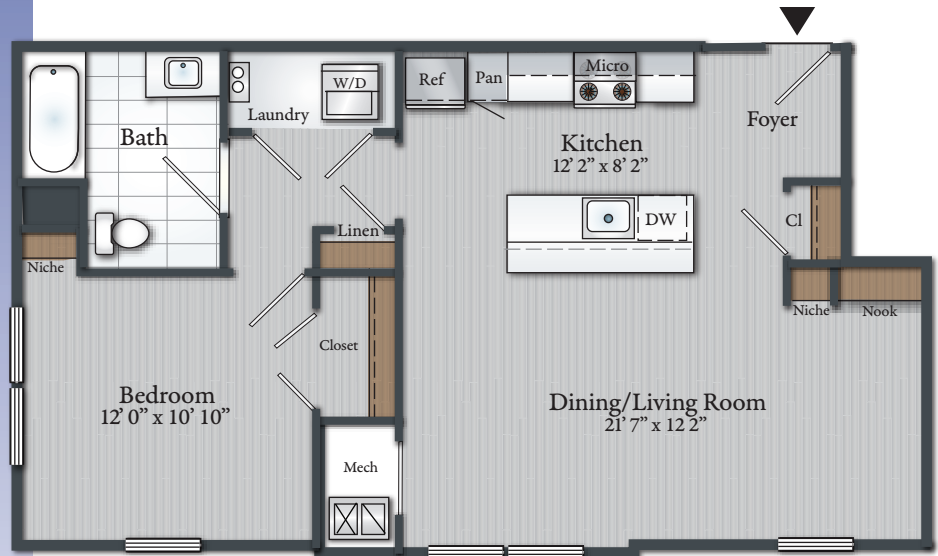
THIRD FLOOR

1 BEDROOM 1 BATH FLAT

Approx. 779 Sq. Ft.

#220

- Modern Kitchen
- Stainless steel appliances
- Quartz countertops
- Breakfast bar with pendant lights
- Luxury plank flooring
- Large Bedroom with walk-in closet
- Ceiling fans in Bedrooms and Living Room
- Stacked washer/dryer



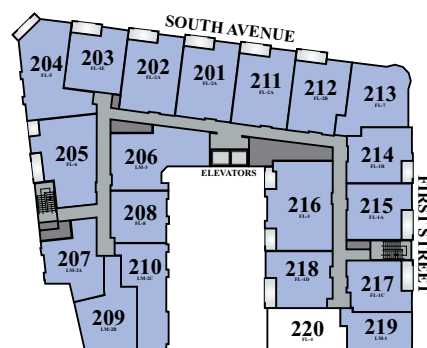
Soho

AT FANWOOD STATION

282 South Avenue
Fanwood, NJ 07023
908-224-5820

Email: Soho@AptRentNJ.com

AptRentNJ.com



KEY MAP

SECOND FLOOR