



DIESEL PNEUMATIC FORKLIFTS

40,000-55,000 LB. CAPACITY: DV180S-7 | DV250S-7



7-SERIES FEATURES & BENEFITS

THE BEAUTY OF THE BEAST

The DV Series of Super Duty Diesel Forklifts feature a strong, rigid chassis frame along with more steel in all the right places. Powered by Bobcat's own 7.6L DL08 engine matched to a proven reliable powertrain, the DV Series ensures that Bobcat is the best choice for even the heaviest of applications.

SAFETY FIRST FEATURES

OSS (Operator Sensing System)

- Truck will not move without an operator in the seat
- Lift and lower functions disabled if the operator is not in the seat
- Tilt function will be locked if no operator is in the seat
- Alarm will sound if operator leaves the seat without applying parking brake
- Seat belt warning light on dashboard to remind operator to fasten seat belt

RELIABLE ZF AUTOMATIC TRANSMISSION

The 4-Speed auto-shift transmission is particularly smooth with gear ratios that are optimized for heavy lifting. Reliability is ensured thanks to the transmission control module (TCM) with Can-Bus communications that constantly monitors the operation of the transmission and alerts the operator of any issues. The combination of these characteristics enables the truck to maintain high speeds, even under challenging conditions.



RELIABLE BOBCAT DL08P ENGINES AND COMPONENTS

Bobcat's 7.6 liter DL08P engine is one of the most powerful and cleanest diesel engines available. The DL08P engine provides highend torque at low engine rpms, reduces fuel consumption and meets all current emission regulations without need for a Diesel Particulate Filter (DPF).

LOAD DETECTION SYSTEM

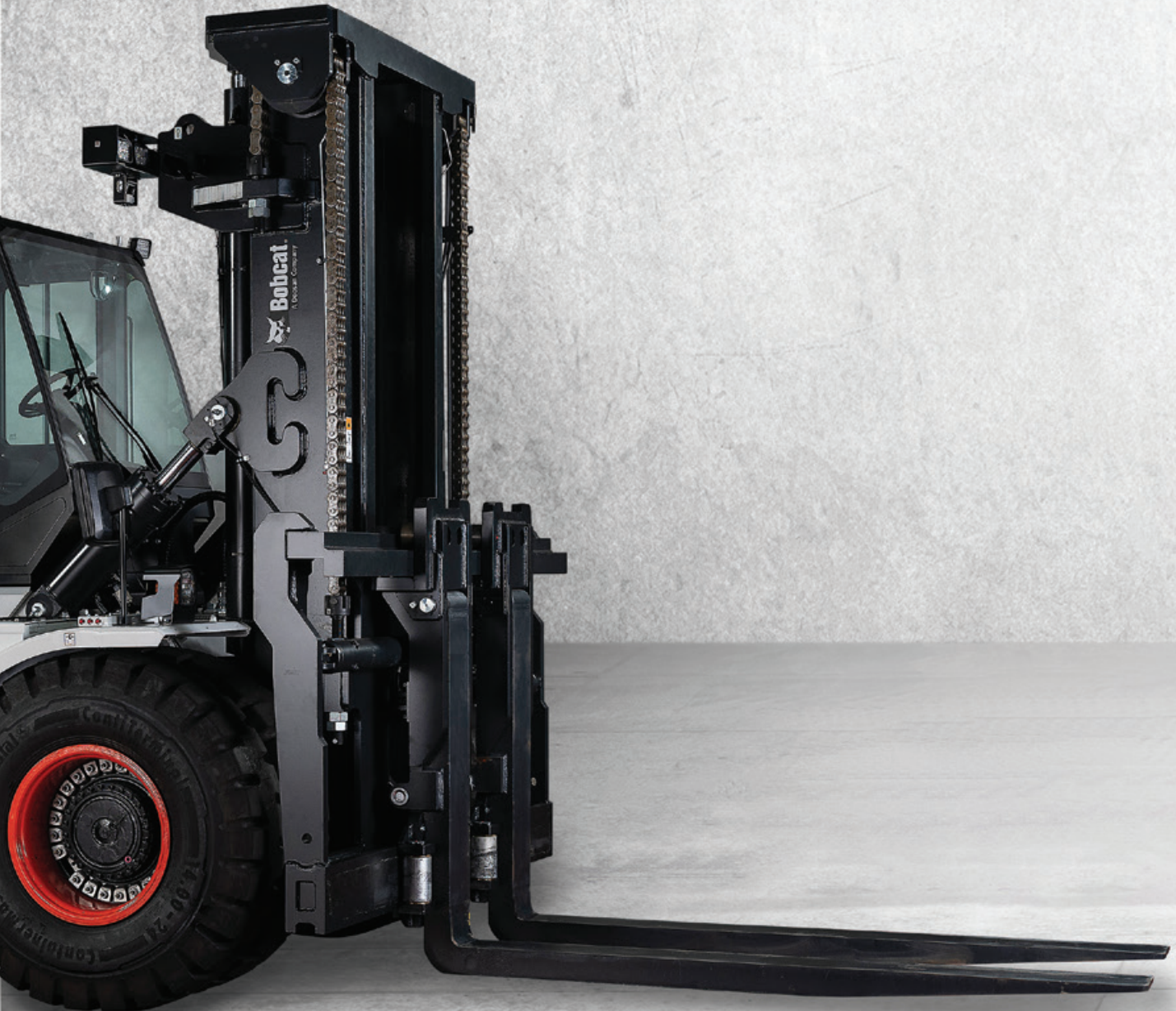
By detecting load presence the system channels additional power to the drivetrain to ensure smooth and efficient operation. The Bosh-Rexroth piston pumps with Closed Center Load Sensing (CCLS) technology reduces engine loads resulting in longer service life and better fuel economy.

COMFORTABLE, CONVENIENT OPERATOR COMPARTMENT

Designed to provide greater convenience and comfort, the Zeus Cabin offers outstanding visibility, clean dashboard and a high quality interior design, as well as powerful heating and air conditioning options.

BOBCAT'S OIL-COOLED DISC BRAKES (OCDB)

- Much greater friction surface provides superior stopping power compared to other brake systems
- Easier to maintain than other braking systems
- Fully enclosed system prevents ingress of dirt, dust and debris
- OCDB extends brake life of up to 5 years or 10,000 hours



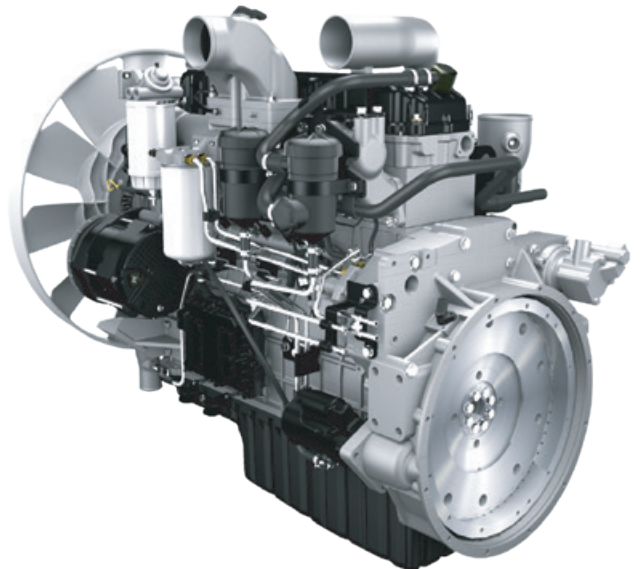
GREATER DURABILITY. EASIER MAINTENANCE.



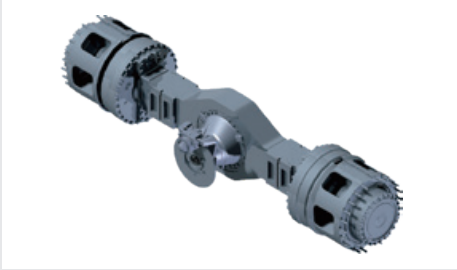
The powerful Bobcat 7.64L DL08P electronically controlled engine delivers excellent fuel efficiency and is combined with a proven ZF auto-shift transmission and heavy-duty Kessler driveaxle. This combination provides great productivity and durability to Bobcat's heavy forklifts, reducing down time and repairs, ensuring a lower cost of ownership.

Bobcat's innovative technology using Diesel Oxidation Catalyst (DOC) and Selective Catalytic Reduction (SCR) ensures the most reliable system to meet all the latest emission regulations.

Robust chassis design and heavy duty build quality ensure Bobcat's 7-Series is the natural choice when it comes to tackling even the toughest of applications.



Fuel Injected, Turbo-Charged 7.64L
Bobcat DL08P Diesel Engine



RELIABLE POWERTRAIN

Only well-proven driveaxle, transmission system, brakes and other powertrain components are used. The electronically controlled transmission transfers plenty of power where its needed, and reliable hydraulic pumps provide the ability to operate the mast and attachment functions with speed and precision.



DURABLE STEERAXLE

The use of an I-beam structured steeraxle adds great strength, while heavier bearings and king pin increase rigidity, durability and stability.



ANTI SLIP STEP PLATE

Added safety for when the operator enters or exits the forklift, especially in inclement weather conditions. Large, convenient tool box located next to anti slip steps.



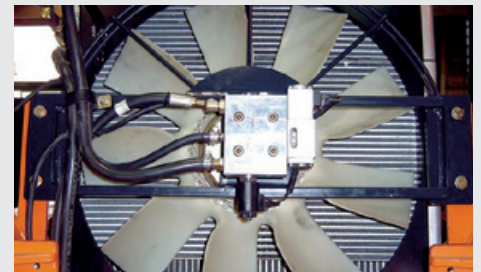
EASY ACCESS

Thanks to the power-tilt operator cabin and wide rear hood opening, service technicians can access the key drivetrain components easily and safely.



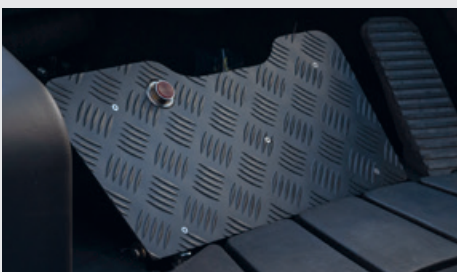
EASY ACCESS STEERAXLE GREASE POINTS

The centralized steeraxle grease points are located in a strategic position, ensuring accessibility and ease of maintenance.



HYDRAULIC MOTORIZED COOLING FAN

A large capacity cooling fan is driven by a remote hydraulic motor. This effectively manages operating temperatures to minimize engine wear and maximize engine efficiency.



ALL-IN-ONE ELECTRONIC INCH AND BRAKE PEDAL

- The all-in-one pedal enables the operator to maneuver precisely while maintaining high engine revs to support hydraulic functions
- The red control button means the operator can seamlessly regulate the speed with the brake pedal while lifting at full power



LED LIGHTING

LED lighting provides greater visibility and safer operating conditions in low-light applications and last much longer than conventional halogen bulbs.

BOBCAT'S ZEUS CABIN

COMFORT, SAFETY, PRODUCTIVITY



OPERATOR COMFORT

- Tilting and telescopic steering column provides practically infinite adjustability, adapting to operators of all sizes, while the hydrostatic power steering system provides light steering and improved handling of the forklift
- Height adjustable, premium leather clad, fully adjustable, suspension seat reduces operator fatigue, increasing throughput and safety
- Centralized seat placement and low dash height provide greater visibility while remaining in a comfortable sitting posture
- Strategically placed heat and A/C ducts keep the operator space comfortable, while dedicated defrost vents ensure visibility and safety



HIGH QUALITY MATERIALS

- Leather covered dash board and inside doors
- Multi-functional audio system: CD/MP3, radio, USB port (*option)
DV250S-7



BOBCAT'S ZEUS CABIN

ADDITIONAL FEATURES



LIFTING, TILTING AND INTERLOCKING FORK POSITIONER

- Directional lever safety button prevents indeliberate movement of the directional selector level, increasing safety at the job site
- Strategically placed short throw hydraulic levers reduce operator fatigue while increasing through put
- Easily identifiable and accessible control function rocker switches simplify operation



CAGE TYPE HYDRAULIC FORK POSITIONER

- To reduce wear and ensure quicker, smoother fork positioning, the fork carriers ride on eight bearing equipped roller assemblies
- Fork carrier design accepts various forks and attachments to ensure application versatility

EXCEPTIONAL LIGHTING

Up to 10 working lights (six front spotlights, four rear lights), plus an interior work task light. Additional options are available.

LED BRAKE LIGHTS

Convenient safety function when working in dark conditions.





SPACIOUS LEG ROOM AND OPERATOR COMFORT

- The neat and wide-open floorboard provides the operator with plenty of leg space to make entry and exit a breeze
- Low noise level and low vibration level



CONVENIENCE PACKAGE

- Deck mounted control valve levers simplify hydraulic actuation
- Convenience tray keeps paperwork and supplies organized and handy



FULL COLOR LCD DISPLAY

- Engine speed and RPMs
- Error codes
- DEF level
- Load weight indicator (*option)

EASY TO OPEN AND CLOSE HOOD

- Opens 60° degrees from the front to the back
- Gas springs reduce the effort needed to lift the hood

ELECTRIC/MANUAL COMBINED TILTING SYSTEM

- Cab can open up to 65° degrees, allowing easy access to major components
- Even with engine shut off the cab can be opened thanks to a dedicated electric motor
- Tilting safety locking system



Electric Cabin Tilt Button



Manual Cabin Tilt

PROVEN QUALITY

A RELIABLE PARTNER

When you own a Bobcat forklift, a knowledgeable, friendly and responsive customer support team comes with it.

The Bobcat network starts with your local dealer and ends with a national team of highly qualified and experienced personnel standing ready to support all your material handling needs.

You will receive the best after-sales service from your authorized local or national factory-trained dealer, backed by Bobcat's own customer service center.

And Bobcat provides industry-leading parts inventory, to insure downtime is kept to a minimum.



STANDARD FEATURES

AND OPTIONAL EXTRAS

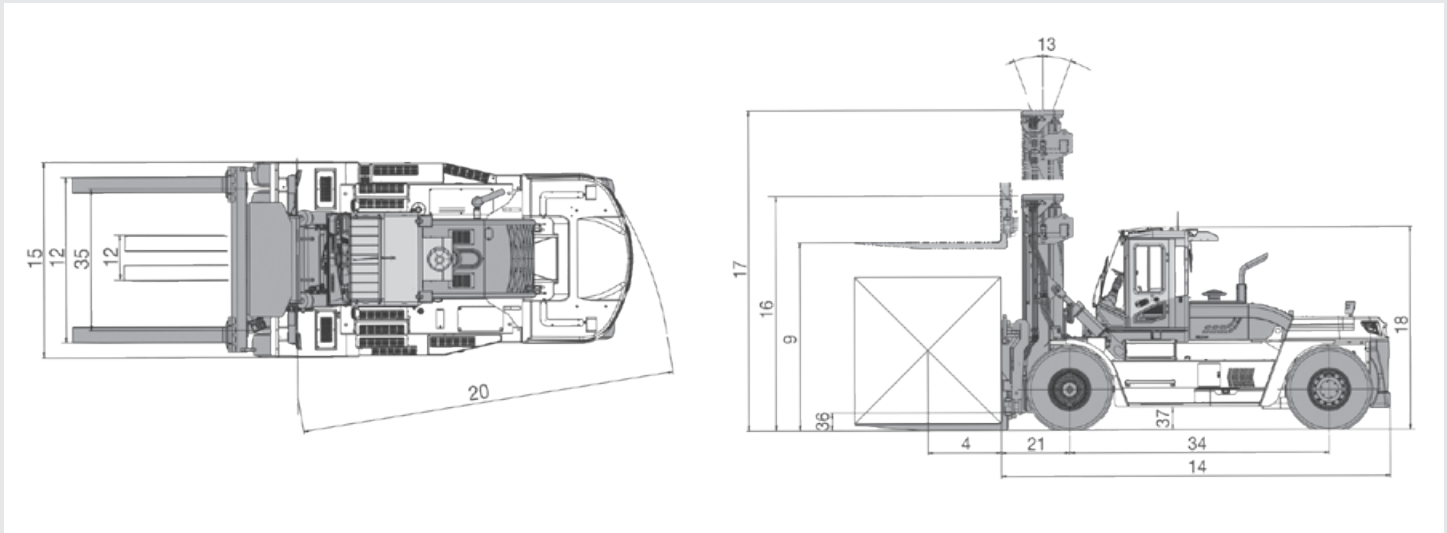
SAFETY	STANDARD	OPTIONAL
Direction Lever Safety Function	•	
Operator Sensing System	•	
Orange Anti-Cinching Type Seat Belt	•	
Autoshift Controller	•	
Emergency Switch	•	
Panoramic Rear View Mirror	•	
Combination Lamps	•	
Tilt Forward 6° Warning Alarm	•	
Back-up Alarm	•	
Side Mirrors w/ Heat	•	
Weight Load Indicator		•
Siren and Microphone		•
2 Front 1 Rear View Camera		•
Rear View Camera (w/ Steer Tire Angle Indicator)		•
Strobe Light (Amber/ Red, LED)		•
Ground Speed Control		•
PRODUCTIVITY	STANDARD	OPTIONAL
Electrically Controlled (Turbo Charged Intercooler) Bobcat Engine	•	
Optimized Pedal Location (Accelerator, Brake and Inching)	•	
All-in-One Electronic Brake and Inching Pedals	•	
Rear Grab Bar (w/ Horn)	•	
2 Front LED Lights on Mast (DV180S-7 only)	•	
4 Front LED Lights on Mast (DV250S-7 only)	•	
2 Rear Lights on Counterweight		•
COMFORT	STANDARD	OPTIONAL
Telescopic Steering Column	•	
Integrated Instrument Panel, Analog and Digital	•	
Seat - Suspension w/ Heat	•	
Easy to Service	•	
<ul style="list-style-type: none"> • Integrated Electric Components (Relays and Fuses) • Automatic Tilttable OPC • Wide Opening Hood 		
Full Cabin (ZEUS)	•	
<ul style="list-style-type: none"> • Wide Front and Rear View • Low noise & Low Vibration Level • Electric Tilttable Cabin • Front, Rear & Top Wiper • CD & MP3 Player • Sun Visor 		
Heater		•
Air Conditioner		•
Steering Knob		•
Sound Suppression (Only for DV180S-7)		•
Air Compressor		•
DURABILITY	STANDARD	OPTIONAL
Waterproof Connectors	•	
Dual Element Air Cleaner	•	
Pre-Cleaner	•	
Rigid Driveaxle (w/ OCDB)	•	
Full Autoshift Transmission	•	
ENVIRONMENT	STANDARD	OPTIONAL
Emission Regulation (Tier IV and Stage IV)	•	
ISO 9001/ ISO 14001	•	
HOMOLOGATION	STANDARD	OPTIONAL
UL		•
CE		•

*Other options are also available. Please ask your local Bobcat representative for more details.

TECHNICAL DATA

		DV180S-7	DV250S-7	
GENERAL SPECIFICATIONS	Capacity	40,000 lb. (18,000 kg)	55,000 lb. (25,000 kg)	
	Load Center		48 in. (1,200 mm)	
	Power Type		Diesel	
	Operator Type		Rider-Seated	
	Tire		Pneumatic	
	Wheels (x = Drive)		x, 4/2	
DIMENSIONS	Lift/Std.	Maximum Fork Height	137.8 in. (3,500 mm)	157.5 in. (4,000 mm)
	Two-Stage Mast	Free Lift	0	0
	Forks	Thickness x Width x Length	3.94 x 9.84 x 94.49 in. (100 x 250 x 2,400 mm)	4.33 x 9.84 x 94.49 in. (110 x 250 x 2,400 mm)
		Fork Spacing (Min. x Max.)	27.95 x 94.25 in. (710 x 2,394 mm)	31.50 x 102.36 in. (800 x 2,600 mm)
	Tilt of Mast	Forward/Backward	10°/9°	12°/10°
		Length to Fork Face	220.3 in. (5,595 mm)	250.0 in. (6,350 mm)
	Overall Dimensions	Width	100 in. (2,540 mm)	120.1 in. (3,050 mm)
		Mast Lowered Height	137.2 in. (3,485 mm)	151.6 in. (3,850 mm)
		Mast Extended Height	204.9 in. (5,205 mm)	228.7 in. (5,810 mm)
		Cab Height	115.4 in. (2,930 mm)	130.3 in. (3,310 mm)
		Seat Height	70.9 in. (1,800 mm)	84.6 in. (2,150 mm)
		Min. Outside Turning Radius		201.6 in. (5,120 mm)
	Load Moment Constant		39.4 in. (1,000 mm)	44.1 in. (1,120 mm)
	90° Stacking Aisle	2,400 x 2,400	343.3 in. (8,720 mm)	380.7 in. (9,670 mm)
90° Intersecting Aisle		184.6 in. (4,690 mm)	215.0 in. (5,460 mm)	
PERFORMANCE	Speed	Travel, Loaded/Unloaded	24.2 mph (39 km/h) / 26.1 mph (42 km/h)	23.0 mph (37 km/h) / 24.9 mph (40 km/h)
		Lift, Loaded/Unloaded	74.8 fpm (380 mm/s) / 80.7 fpm (410 mm/s)	61.0 fpm (310 mm/s) / 66.9 fpm (340 mm/s)
		Lowering, Loaded/Unloaded	78.7 fpm (400 mm/s) / 68.9 fpm (350 mm/s)	78.7 fpm (400 mm/s) / 68.9 fpm (350 mm/s)
	Drawbar Pull	@ 1.6km/h, Loaded	32,298 lbs. (14,650 kg)	50,063 lbs. (22,708 kg)
Gradeability	@ 1.6km/h, Loaded	35.6%	36.0%	
WEIGHT	Total Weight	Unloaded	58,202 lbs. (26,400 kg)	84,878 lbs. (38,500 kg)
	Axle Load	With Load, Front/Rear	90,853 lbs. (41,210 kg) / 7,033 lbs. (3,190 kg)	127,641 lbs. (57,897 kg) / 12,353 lbs. (5,603 kg)
		Without Load, Front/Rear	27,888 lbs. (12,650 kg) / 30,314 lbs. (13,750 kg)	42,439 lbs. (19,250 kg) / 42,439 lbs. (19,250 kg)
CHASSIS	Tires	Number, Front/Rear	4 / 2	
		Size, Front Single	12.00 R20	14.00-24"– 28PR
		Size, Rear	12.00 R20	14.00-24"– 28PR
	Wheel Base		147.6 in. (3,750 mm)	167.3 in. (4,250 mm)
	Tread	Front/Rear	73.1 in. (1,858 mm) / 77.8 in. (1,976 mm)	86.6 in. (2,200 mm) / 84.3 in. (2,140 mm)
		Ground Clearance	Loaded, @ Lowest Point	8.3 in. (210 mm)
	Ground Clearance	Loaded, @ Center of Wheelbase	12.8 in. (325 mm)	15.0 in. (380 mm)
		Brake	Service	Oil-Cooled Disc
	Parking		Mechanical	
	DRIVE	Battery	Voltage/Ampere-hour	24 V (12 x 2) / 150 AH
Manufacturer/Model			Bobcat/DL08P	
Engine		Rated Output (DIN)	246.5 hp (250 ps) / 2,100 rpm	285.9 hp (290 ps) / 2,100 rpm
			183.7 kw / 2,100 rpm	213.3 kw / 2,100 rpm
		Max. Torque	853 lb-ft / 1,300 rpm	911 lb-ft / 1,300 rpm
			118 kg-m / 1,300 rpm	126 kg-m / 1,300 rpm
		Cycle/Cylinders/Displacement	4 / 6 / 7,640 cc	
Fuel Tank Capacity		80 gal. (300 lit.)	105 gal. (400 lit.)	
DEF (AdBlue)		8 gal. (30 lit.)		
Manufacturer/Model		ZF /4WG211		
Transmission Type	Full Autoshift			
No. of Speeds, Forward/Reverse	4 / 3			
Driveaxle	Manufacturer/Model	Kessler D81	Kessler D91	
Operating Pressure	System/Attachment	3,408 psi (235 bar) / 2,683 psi (185 bar)	3,336 psi (230 bar) / 3,191 psi (220 bar)	

DIMENSIONAL DRAWING



MAST SPECIFICATIONS AND RATED CAPACITIES

Mast Type	Max. Fork Height		Mast Lowered Height		Extended Height		Free Lift		Rated Load Capacities				
					w/ Load Backrest		w/ Load Backrest		Tilt Angle		LC 1200mm		LC 48in
	Fwd	Bwd	kg	lb									
	mm	in	mm	in	mm	in	mm	in	deg	deg	kg	lb	
DV180S-7	STD	3,000	118	3,235	127	4,705	185	0	0	10	10	18,000	40,000
		3,500	138	3,485	137	5,205	205	0	0	10	10	18,000	40,000
		4,500	177	3,985	157	6,205	244	0	0	10	10	18,000	40,000
		5,000	197	4,235	167	6,705	264	0	0	10	10	18,000	39,500
	FFT	4,500	138	2,930	115	5,920	233	1,550	61	10	10	17,000	37,500
		5,000	157	3,100	122	6,430	253	1,720	68	10	10	17,000	37,500
DV250S-7	STD	4,000	157	3,600	142	5,310	209	0	0	12	10	25,000	55,000
		4,500	177	3,850	152	5,810	229	0	0	12	10	25,000	55,000
		5,000	197	4,350	171	6,810	268	0	0	12	10	25,000	55,000
		5,600	220	4,650	183	7,410	292	0	0	12	10	25,000	54,600

Note: Mast Specifications & Rated Capacities are based on standard chassis with dual pneumatic tires and without side shifter.





**YOU ARE
ONE
TOUGH
ANIMAL.**

Everything we put into Bobcat® equipment is designed to make more of whatever you bring to the job. Whether it's strength, versatility, speed or agility, it's built around you.



Certain specification(s) are based on engineering calculations and are not actual measurements. Specification(s) are provided for comparison purposes only and are subject to change without notice. Specification(s) for your individual Bobcat equipment will vary based on normal variations in design, manufacturing, operating conditions, and other factors. Where applicable, dimensions are in accordance with ISO standards. Specifications and design are subject to change without notice. Pictures of Bobcat units may show other than standard equipment. All dimensions are given for material handling equipment with standard tires. All dimensions are shown in inches. Respective metric dimensions are enclosed by parentheses. Bobcat Company complies with the requirements of ISO9001 as registered with BSI.



Bobcat Company is a member of the Doosan Group. Doosan is a global leader in construction, grounds maintenance and material handling equipment, power and water solutions, and engineering that has proudly served customers and communities for more than a century. Bobcat®, the Bobcat logo and the colors of the Bobcat machine are registered trademarks of Bobcat Company in the United States and various other countries.
©2025 Bobcat Company. All rights reserved.

BOBCAT COMPANY • 250 EAST BEATON DRIVE • WEST FARGO, ND 58078 • BOBCAT.COM

DOOSAN

B-3310 (04/25)
EP-M-0425-16946-E