



ELECTRIC HIGH LEVEL ORDER PICKER

3,000 LB. CAPACITY: BOP15S-9



PRODUCT FEATURES OVERVIEW

ADVANCED DESIGN

Bobcat's 9-Series Order Picker combines innovative safety features, superior performance, and thoughtful ergonomics, making your warehouse operation safer and more efficient.

INTELLIGENT SAFETY

- Auto Directional Alignment (Key on)
- Electromagnetic Parking Brake
- AC Proportional Lift/Lower Control
- Height and Descent Proximity Sensors
- Safety Side Gate with Electronic Lockout Function
- Battery Side Gate & Hood Cover Safety Interlock
- Bobcat GSS (Guardian Stability System)
 - Driving Speed Control
 - Cornering Speed Control
- Rigid High-Stability Mast
- Chain Slack Sensor
- Emergency Stop Button
- Back-Up Alarm

OUTSTANDING PRODUCTIVITY & COMFORT

- LED Lighting and High Performance Operator Fans
- Electric Power Steering
- Three Travel Modes
- Pre-Height Selector
- Wide View Mast
- Top-Tier Travel and Lift Speeds
- Excellent Operator Comfort
 - Oversized Cushioned Operator Platform
 - USB Port and Power Supply
 - Ergonomically Designed Control Handle
 - Operator Convenience Add-ons for Scanners, Clip Boards, and Cup Holders

EXCEPTIONAL RELIABILITY

- All AC Curtis Controller
- Industry-Proven Prestolite Motors
- Schabmuller Steer Motor
- Reliable ZF Drive Unit
- Heavy-Duty Stellana Drive Tire and Load Wheels



EASY MAINTENANCE

- Wide-Opening Tool-Free Service Doors
- Easy Access Hood
- Lift Chain Slack Sensor
- Easy Access to Drive Tire
- Quick-Charge Connector
- Easy Access to Hydraulic Pump, Drive Motor, and Steering Components
- Extended Maintenance Intervals (2,500-hr. Hydraulic Oil Changes)

OPTIONAL FEATURES

- Clear Poly-Carbonate Screen
- Dual Operator Cooling Fans
- Front/Rear Safety Lights
- Freezer/Low Temp Packages
- Fire Extinguisher
- Blue Safety Spotlight



SAFETY FIRST

STABILITY & CONTROL

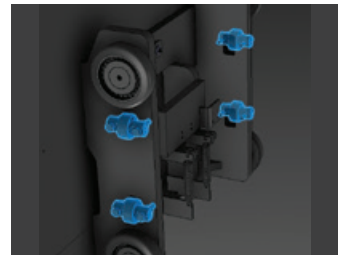
Maneuver narrow aisles quickly and easily with Bobcat's High Level Order Picker, equipped with 'Smart-Tec'.

STABLE MAST & OPERATOR PLATFORM

Highly rigid mast channels allow the operator to work comfortably and confidently, increasing productivity.

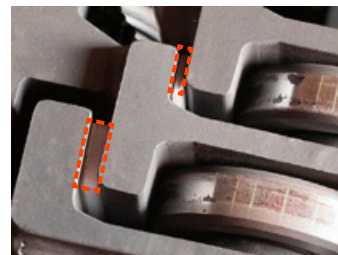
HEIGHT AND DESCENT PROXIMITY SENSORS

- Monitors Lifting/Lowering Speed to Minimize Shock when Reaching the End of Lift and Lower Cycles
- Provides Operators with Smooth Transitions
- Hydraulic Accumulator Further Aids in Absorbing Shock



MAST SIDE THRUST ROLLERS

Strategically placed side rollers minimize lateral platform movement.



RAIL WEAR GUIDE STRIPS

Mast pads help minimize unintended forward/backward movement of the mast, improving operator safety and comfort.



PALLET CLAMP

- Securely Holds Pallet in Place When Engaged
- Accommodates Various Center Stringer Sizes

RIGID MAST DESIGN

Operators can pick without worry thanks to the exceptionally stable mast design.

'Smart-Tec' sensors continuously monitor travel speed and lift height to maintain maximum productivity and safety.

SAFETY INTERLOCK

Multi-point safety interlock functions continuously check the truck's parameters to assure safe operations.

CHAIN SLACK SENSOR

Should the chain tension fall outside of the safety parameters, all functions are restricted except for platform lift.

OPERATOR SAFETY SIDE GATE

If the safety side gate is raised, all functions except lowering are suspended.

CONVENIENT FOOT SWITCH

All functions are restricted and parking brake is applied automatically when footswitch is not pressed.

BATTERY SIDE GATE

Travel is disabled when the battery side gate is not in place.

REAR DOOR/HOOD SENSORS

If the sensors detect the doors are open, all truck functions are disabled.

DOOR SENSORS

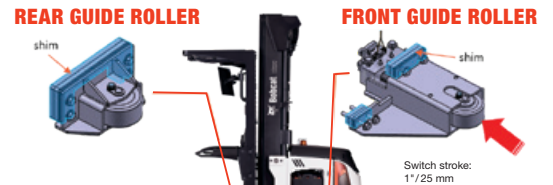


AUTO-CENTERING DRIVE

At start up and after extended inactivity, the steering system is auto-aligned to the forward direction for added safety.

NARROW AISLE RAIL GUIDANCE (OPTION)

Side rollers help the vehicle maintain straight travel. When the side roller is depressed, the drive tire is automatically aligned to neutral until the side rollers are released.



AUTO DECELERATION

The GSS (Guardian Stability System) enables auto deceleration when mast is above a specific level and/or steering angle is increased.

ELECTROMAGNETIC PARKING BRAKE

Automatically applied 3 seconds after truck stops.

BLUE SAFETY LIGHT (OPTION)

Warning is given to pedestrians by reflecting the blue light in both directions.



OUTSTANDING PRODUCTIVITY

POWER MEETS PERFORMANCE

■ FAST & RESPONSIVE LIFTING

The powerful pump motor and reliable AC controller provide efficient lifting and travel speeds, making order picking more productive.



PRE HEIGHT SELECTOR

- Pre-Set up to 8 Different Heights
- Automatically Lifts and Stops when the Operator Selects the Desired Setting on the Keypad.

The combination of superior power and handling control maximizes performance and improves productivity in a variety of applications.

CLEAR VISIBILITY

Mast layout and cylinder placement is optimized to assure unobstructed forward vision.



FAST TRAVEL SPEED

Operators will appreciate top travel speeds, especially in large warehouse environments.

BRIGHT LED PLATFORM LIGHTS

Operator compartment lighting provides better visibility even in dark operations.



**AVAILABLE IN 210"/240"/273"
OR 300" MAST HEIGHTS**

OPERATOR CONVENIENCE

THE KEY TO PRODUCTIVITY

CONVENIENCE



OPERATOR COOLING FANS

- High-Powered Fan Motors
- Adjustable Fan Direction
- Tilted Vent for Improved Air Flow



AUXILIARY POWER

- 5V USB Power
- 12V Power Jack
- Cup Holder



QUICK-CHARGE ACCESS PORT

Sensor detects the charger's connection and cuts the power to the truck during charging, preventing sudden travel.



AMPLE STORAGE

- Upper Compartment for Documents or Small Items
- Lower Compartment for Larger Items



SPACIOUS OPERATOR PLATFORM

- The Bobcat 9-Series Order Picker Provides Ample Floor Space for All Operators
- The Large Platform Makes Picking Safer and More Convenient





LED LIGHTING

Long-life LED lights provide increased brightness versus halogen lights.



ACCESSORY BAR FOR ADDITIONAL DEVICES

- Accessory Bars on Both Sides
- Document Clip Board (Optional)
- Scanner Holder (Optional)



BRIGHT AND INTUITIVE DISPLAY

Provides quick access to the truck's adjustable performance settings.



ERGONOMIC CONTROL HANDLE

- Intentional Design and Placement
- More Natural 8° Hand Position
- Rubber Grip for Anti-Slip Control
- Driving/Lifting/Lowering/Horn



CUSHION FLOOR MAT

- Cushion Floor Mat Reduces Fatigue by Absorbing Vibration and Impact
- Surface: Rubber with Anti-skid Pattern
- Inner: PE Foam



UNSURPASSED DURABILITY

RELIABLY ENGINEERED

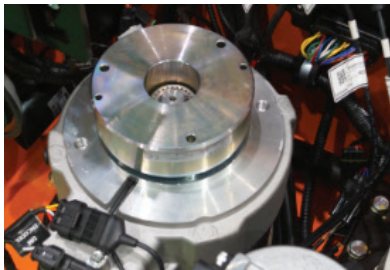
EXTENDED SERVICE INTERVALS

- Hydraulic Oil Filter: 2,000 hrs.
- Hydraulic Oil: 2,500 hrs.



PROTECTED AND ENCLOSED MOTORS

- Powerful Motors that Ensure Maximum Durability
- IP43 Rated and Enclosed for Increased Protection from Dirt, Dust and Moisture



RELIABLE AC CONTROLLERS

IP65 Rated AC controller is industry-proven in various types of applications.



DURABLE TIRE AND LOAD WHEELS

- Sturdy Stellana Polyurethane Tires Surpass the Performance Requirements for Heavy-Duty Applications
- Provides Excellent Wear Resistance
- Bolt-On Design for Ease of Maintenance



ZF TRANSFER

- Patented Hypoid Bevel Gear-Set Reduces Heat, Noise and Wear
- No Need for Additional Oil Changes after its First Servicing





SERVICEABILITY SIMPLIFIED

PRODUCTIVITY AMPLIFIED

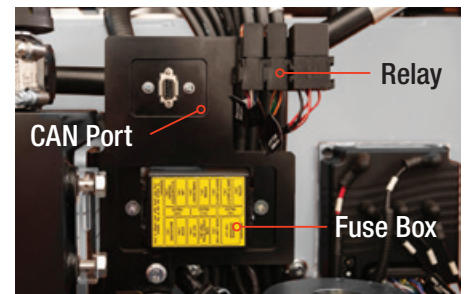
WIDE OPEN REAR DOOR & HOOD

Allows ample access to the main components once the rear doors and upper hood are opened.



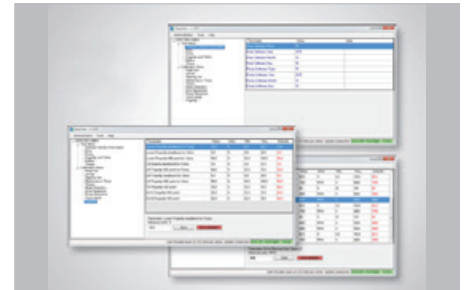
CENTRAL JUNCTION BOX

Fuse, relay & controller area network (CAN) ports are centralized for convenient access.



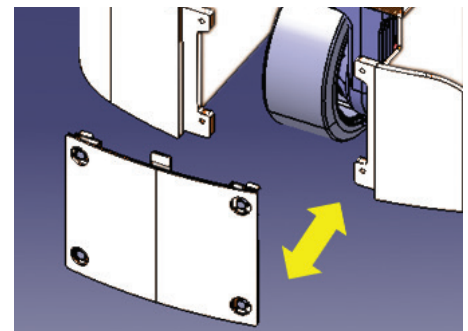
ON-BOARD DIAGNOSTICS

Diagnose the Order Picker and set its performance parameters via laptop (no special tools required).



REMOVABLE DRIVE TIRE ACCESS COVER

Quick and convenient access to drive tire and drive assembly.



TECHNICAL DATA

BOP15S-9w

Capacity	3000 lb. (1360 kg)
Load Center	24.0 in. (610 mm)
Power Type	24V
Drive	Electric
Drive Motor Rating S2 60 min.	5.8 hp (4.3 kW)
Lift Motor Rating S3 15%	14.7 hp (11.0 kW)
Steering Rating S3 15%	1.1 hp (0.85 kW)
Standard Battery Connector	SB350 Red
Max. Battery Compartment (L x W x H)	13.0 x 38.0 x 32.3 in. (330 x 965 x 820 mm)
Operator Type	Order Picker
Service Brake	Regenerative
Parking Brake	Electric Disc
Travel Speed: Loaded/Unloaded	7.5 mph (12.0 km/hr.) / 7.5 mph (12.0 km/hr.)
Lift Speed: Loaded/Unloaded	45.0 fpm (0.23 m/s) / 67.0 fpm (0.34 m/s)
Lowering Speed: Loaded/Unloaded	79.0 fpm (0.40 m/s) / 79.0 fpm (0.40 m/s)
Tire Type	Polyurethane
Tire Size (Rear)	6.0 x 2.8 in. (152 x 70 mm)
Wheels, Load/Caster (x=Drive)	1x/4
Service Weight Without Battery	6237 lb. (2829 kg)
Min. Battery Weight	1532 lb. (695 kg)
Fork Height (Fully Lowered)	3.0 in. (75 mm)
Operator Compartment Height	79.0 in. (2008 mm)
Top of Fork to Floor Height	5.2 in. (132 mm)
Side Safety Gate Height	39.5 in. (1003 mm)
Wheelbase	57.1 in. (1450 mm)
Standard Fork Length	42.0 in. (1065 mm)
Length to Forkface	78.0 in. (1982 mm)
Driver Compartment Length	26.7 in. (679 mm)
Overall Width (Chassis)	40.0 in. (1016 mm)
Width Over Forks	22.0 in. (570 mm) / 30.0 in. (762 mm)
Ground Clearance	2.0 in. (52 mm)
Outside Turning Radius	67.8 in. (1722 mm)
Fork Size (T x W x L)	2.0 x 4.0 x 42.0 in. (50 x 100 x 1065 mm)

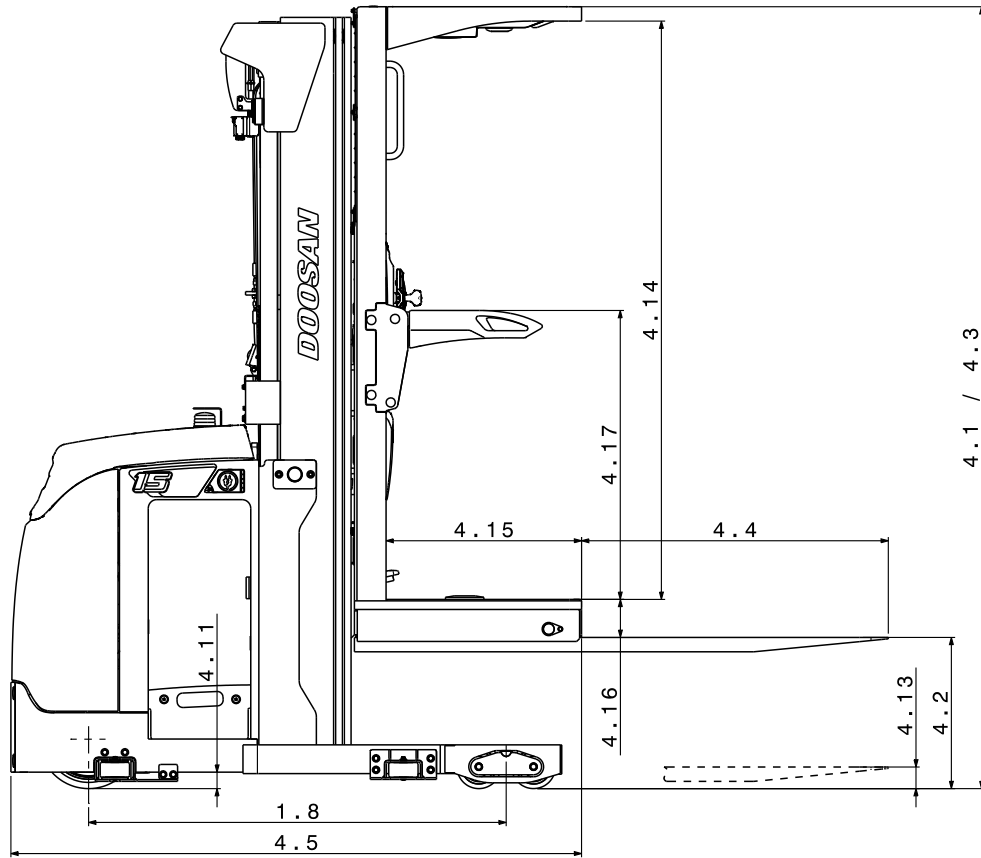
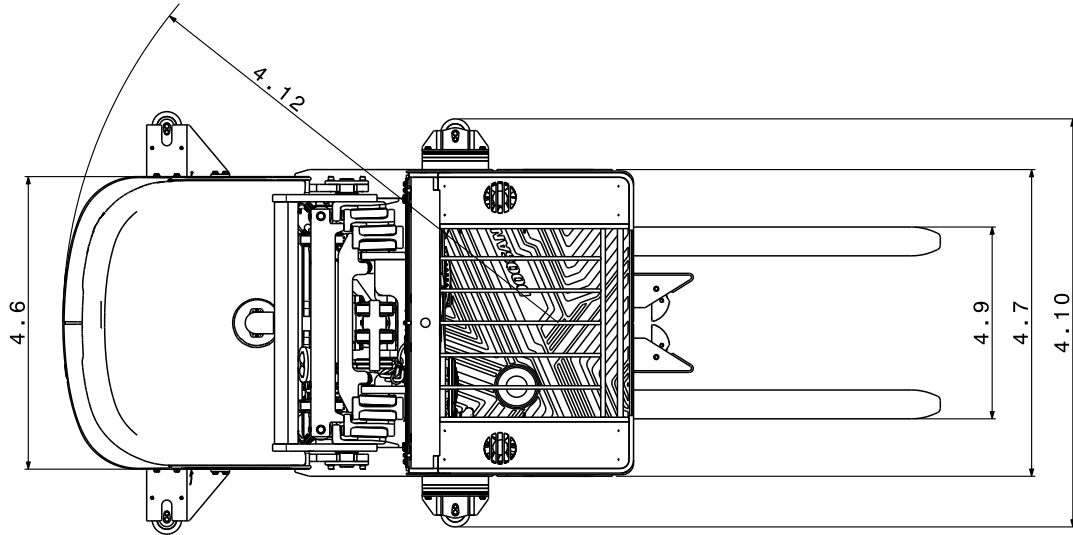
MAST SPECIFICATIONS AND RATED CAPACITIES

BOP15S-9

MAST TYPE	Maximum Fork Height		Maximum Lowered Height		Fully Extended Height		Free Lift	
	in.	mm	in.	mm	in.	mm	in.	mm
FFT	210	5,330	95.3	2,420	296.7	7,535	6.1	155
FFT	240	6,100	105.3	2,675	327.0	8,305	16.1	410
FFT	273	6,940	116.3	2,955	360.0	9,145	27.2	690
FFT	300	7,620	124.4	3,185	387.2	9,835	36.2	920

NOTE: Products and specifications are subject to improvement and change without prior notices.

DIMENSIONAL DRAWING





Bobcat.
A Doosan Company

DOOSAN

PROPERTY OF
CASA-COLA-21

AX103 U20

AX103 U30

AX103 T30

AX103 S30

AX103 T20

AX103 S20

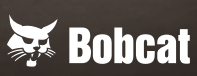


**YOU ARE
ONE
TOUGH
ANIMAL.**

Everything we put into Bobcat® equipment is designed to make more of whatever you bring to the job. Whether it's strength, versatility, speed or agility, it's built around you.



Certain specification(s) are based on engineering calculations and are not actual measurements. Specification(s) are provided for comparison purposes only and are subject to change without notice. Specification(s) for your individual Bobcat equipment will vary based on normal variations in design, manufacturing, operating conditions, and other factors. Where applicable, dimensions are in accordance with ISO standards. Specifications and design are subject to change without notice. Pictures of Bobcat units may show other than standard equipment. All dimensions are given for material handling equipment with standard tires. All dimensions are shown in inches. Respective metric dimensions are enclosed by parentheses. Bobcat Company complies with the requirements of ISO9001 as registered with BSI.



Bobcat Company is a member of the Doosan Group. Doosan is a global leader in construction, grounds maintenance and material handling equipment, power and water solutions, and engineering that has proudly served customers and communities for more than a century. Bobcat®, the Bobcat logo and the colors of the Bobcat machine are registered trademarks of Bobcat Company in the United States and various other countries.
©2025 Bobcat Company. All rights reserved.

DOOSAN

BOBCAT COMPANY • 250 EAST BEATON DRIVE • WEST FARGO, ND 58078 • BOBCAT.COM

B-3307 (04/25)
EP-M-0425-8333247812-E