



# PNEUMATIC TIRE ELECTRIC 80V FORKLIFTS

5,000-10,000 LB. CAPACITY: B25X-7 | B30X-7 | B35X-7 | B40X-7 | B45X-7 | B50X-7



# PRODUCT FEATURES OVERVIEW

# FAST. STRONG. RELIABLE.

Bobcat's 80V BX-7 Series provides low power consumption and high performance. With a reliable Curtis AC controller, heavy-duty drive motors and hydraulic pump, Bobcat forklifts deliver cost-effective, reliable operation, job after job.

## OPERATOR'S COMPARTMENT

The operator's compartment is ergonomically designed to maximize comfort and convenience.

## THREE-POINT ENTRY

An anti-slip step plate, OHG-mounted grab handle and arm rest combine to increase operator safety when entering or exiting the truck.

## ERGONOMIC PEDAL SYSTEM

The electronic accelerator pedal provides the operator with safe and precise speed control while reducing fatigue.

## CLOTH OR VINYL SUSPENSION SEAT

Spacious and fully adjustable for ultimate comfort.

## LARGE, INTUITIVE INSTRUMENT PANEL

Easy-to-monitor critical systems at a glance.

## EMERGENCY SHUT-OFF

Conveniently located for quick shut-down of truck functions in case of emergency.

## BOBCAT OPERATOR SENSING SYSTEM (OSS)

Automatically shuts down hydraulics and travel should the operator leave the seat.

## BOBCAT GUARDIAN STABILITY SYSTEM (GSS)

The BX-7 Series offers Bobcat's own Guardian Stability System (GSS), an advanced safety feature.

## TURTLE MODE

Limits travel speed and acceleration without limiting lift speed for working in close confines or highly trafficked pedestrian areas. Reduces battery consumption and increases safety.



## DUST AND WATER PROTECTION

IP65 controller and IP43 motors, wiring and connectors are sealed, preventing the penetration of dust, debris and moisture.

## RUGGED AND DURABLE TWIN DRIVE MOTORS

Twin drive motors are directed by an integrated drive controller for effective transfer of power and torque resulting in smooth, quiet operation.

## RELIABLE AC CONTROLLER

AC controllers provide an unbeatable combination of power, performance and functionality.

## AC MOTOR

AC technology used within the drive and hydraulic motors eliminates motor brushes and commutator, reducing maintenance and lowering overall operating cost.

## THERMAL PROTECTION

Reduces power to controller and motors should their temperatures rise beyond safe limits.

## WIDER VIEW MAST – FFT

Improved forward vision (through mast) by 12% over previous models. You get FF visibility in a FFT mast.

## BATTERY DISCHARGE INDICATOR

Notifies the operator of the battery charge status and guides charging when the battery is below 20% to extend battery life.

## EASY ACCESS TO MAINTENANCE ITEMS

Wide-opening engine cowlings makes maintenance and safety checks a breeze.

## 5-YEAR/10,000 HOUR OCDB WARRANTY

Bobcat's exclusive Oil-Cooled Disc Brakes (OCDB) last 5 times longer than conventional shoe brakes and are virtually maintenance free.



# SAFETY

## FIRST AND ALWAYS

Operators work best when they are comfortable and safe. From the fully adjustable seat and steering column to the Operator Sensing System, the Bobcat BX-7 family of trucks are unmatched in both ergonomic design and the quality of built-in safety features.



### ANTI-SLIP STEP & ENTRY GRAB BAR

Anti-slip steps and entry grab bars help operators to easily get on or off the truck safely.



### EMERGENCY SWITCH

The operator can push the emergency shut-off switch quickly while keeping one hand on the steering wheel.



### SAFE SPEED CONTROL

### TURTLE MODE

This mode ensures slower travel in busy operations and high pedestrian work zones. This doesn't affect lift speeds.



### UNLIMITED RAMP HOLD\*

The automatic, electromagnetic parking brake prevents the forklift from rolling back when stopped on a slope.

(\*B25X/B30X/B35X Models Only)

### BOBCAT GUARDIAN STABILITY SYSTEM (GSS)

The BX-7 Series offers the Guardian Stability System (GSS), an advanced safety feature providing:

- Decreased travel speed (50%) when mast is raised beyond the primary stage
- Alarm will sound when mast is raised above the primary stage with mast tilted beyond 2°
- An angle sensor controls travel speed in sharp turns



### FORWARD TILT CONTROL

Part of the GSS, forward tilt is reduced 2° when the mast is raised beyond the primary stage.



### BOBCAT OPERATOR SENSING SYSTEM (OSS)

When the operator leaves the seat, the truck travel and hydraulic functions stop. This system helps prevent the operator from moving loads in an unsafe manner.



### HYDRAULIC LOCKING FEATURE (OSS FEATURE)

Part of the OSS, the hydraulic locking system prevents natural lowering and tilting, which safeguards the forklift and the load if the operator leaves the truck.



### CLEAR VIEW FORWARD

The precision designed overhead guard profile, with angled roof bars, provides a clear view upwards while adding increased strength for safety.



**SMOOTH ACCELERATION**

Reduced initial acceleration for safety. Increased acceleration during mid- and high-speed levels for optimum travel.



**PREMIUM SUSPENSION SEAT (OPTIONAL GRAMMER SEAT UPGRADE)**

The full suspension seat is adjustable to accommodate individual preferences.



**FINGERTIP CONTROLS (OPTION)**

Fast, precise and easily controllable, makes operating effortless and efficient. Especially useful for frequent lifting and lowering of loads, or when handling fragile loads requiring more of a refined control.



**ADJUSTABLE STEERING COLUMN**

The operator can adjust the position of the column for convenience and comfort.



**OPERATOR SPACE**

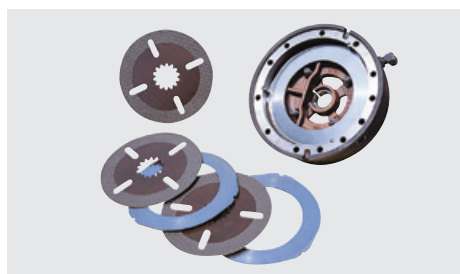
The large, thick rubber floor mat, angled toe board, and pedal position ergonomics provide operator comfort, while the rounded hood makes it easier to get on/off the truck.



**CONVENIENCE TRAY**

Features of the operator convenience tray include:

- Large Cup Holder
- Note Pad Holder
- USB Port
- 12v Power Outlet
- Emergency Shut-off Button



**OIL-COOLED DISC BRAKES (OCDB)**

Bobcat's Oil-Cooled Disc Brakes (OCDB) last 5X longer (up to 10,000 hours) than conventional shoe brakes and are virtually maintenance free.



**EASY-READ INSTRUMENT PANEL**

Keeps operator informed and provides access to pre-set travel parameters.

# SIMPLE SERVICING

## EASY TO OWN

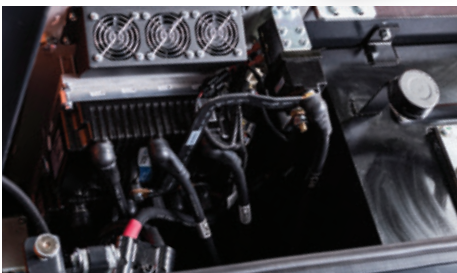
Bobcat's 80V BX-7 Series provides low power consumption and high performance. With one of the lowest total cost of ownerships in the business, these trucks work as hard as you do, without breaking the bank.

### HOOD COVER

Wide opening with locking type gas spring means easy access for routine maintenance and added safety.

### SIDE PANEL

Tool-free removal with air ventilation slots for cooler operation.



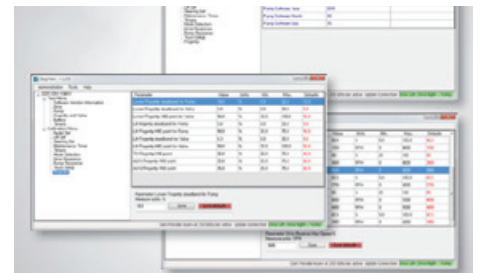
### CENTRALIZED CONTROLLER ACCESS

The controller space is open and easy to access so that systems can be checked and serviced quickly.



### BRAKE OIL INDICATOR

Check brake oil level directly from the dash panel. A display warning indicator is also located on the instrument panel.



### CUSTOMIZED PERFORMANCE

Travel, lift and lowering speeds are completely customizable depending on your application needs.

# PRIMARY SPECIFICATIONS

MAJOR SPECIFICATIONS	B25X-7	B30X-7	B35X-7	B40X-7	B45X-7	B50X-7
Load Capacity/Rated Load	5,000 lb. (2,268 kg)	6,000 lb. (2,722 kg)	7,000 lb. (3,175 kg)	8,000 lb. (4,000 kg)	9,000 lb. (4,500 kg)	10,000 lb. (5,000 kg)
Load Center Distance	24 in. (600 mm)					
Load Distance, Center of Drive Unit to Fork	17.6 in. (448 mm)	17.9 in. (454 mm)		22.5 in. (572 mm)		
Wheelbase	62.6 in. (1,589 mm)	68.3 in. (1,734 mm)	68.9 in. (1,750 mm)	78.7 in. (2,000 mm)		
Turning Radius	76.8 in. (1,950 mm)	82.5 in. (2,095 mm)	84.8 in. (2,155 mm)	103.1 in. (2,620 mm)		104.1 in. (2,645 mm)
Travel Speed, Loaded/Unloaded	9.9/11.2 mph (16/18 km/h)			9.3/9.9 mph (15/16 km/h)		
Lift Speed, Loaded/Unloaded	94.8/118.2 fpm (480/600 m/sec) < B25X-7	82.8/118.2 fpm (420/600 m/sec)	75.0/118.2 fpm (380/600 m/sec)	68.9/92.5 fpm (350/470 m/sec)	65.0/92.5 fpm (330/470 m/sec)	61.0/92.5 fpm (310/470 m/sec)
Lowering Speed, Loaded/Unloaded	96.6/90.6 fpm (490/460 m/sec)		98.4/90.6 fpm (500/460 m/sec)	94.5/88.6 fpm (480/450 m/sec)		
Max. Drawbar Pull, Loaded/Unloaded, 5 min. Rating	3,898/3,693 lb. (17,339/16,427 N)			4,186/4,186 lb. (18,620/18,620 N)		
Max. Gradeability, Loaded/Unloaded, 5 min. Rating	25/38%	22/34%	20/31%	17/27%	16/26%	15/25%
Battery Voltage/Nominal Capacity K5	80/720 V/Ah					

# STANDARD FEATURES AND OPTIONS\*\*

## SAFETY & STABILITY

Bobcat OSS (Operator Sensing System)	Standard Features
Anti roll back	Standard Features
Low battery warning alarm	Standard Features
ISO 3691 mast inter-lock & tilt lock	Standard Features
Emergency stop switch	Standard Features
Adjustable speed control	Standard Features
Back-up alarm	Standard Features
Large mirrors	Standard Features
Amber strobe	Standard Features
Electromagnetic parking brake*	Standard Features
Bobcat GSS (Guardian Stability System)	Standard Features
LED lights	Standard Features

## OPERATOR COMFORT (ERGONOMICS)

Entry grip, entry bar & large entry step with anti-slip pattern	Standard Features
Large, angled floor plate with heavy duty rubber mat	Standard Features
Rounded battery hood cover	Standard Features
Easy to read display panel	Standard Features
Adjustable tilt steering column & easy grip steering wheel	Standard Features
Large cup holder, USB port & 12V electric jack, clip board	Standard Features
Fully adjustable suspension seat	Standard Features
Fingertip controls	Options
Premium seat upgrade: Grammer seat	Options
Panoramic mirror	Options

## PRODUCTIVITY

High visibility mast	Standard Features
Rounded counterweight	Standard Features
Hydraulic cushioned valve in secondary cylinder (FF & FFT)	Standard Features
Smooth and responsive acceleration	Standard Features
Cold storage application package	Standard Features
2 Front / 1 Rear flood light	Standard Features
6 Forward / 9 Back Tilt	Standard Features
Auto tilt leveling	Options
Directional switch on hydraulic lever	Options

## DURABILITY & SERVICEABILITY

Full AC system	Standard Features
Curtis controller rated IP65 protection for water & debris	Standard Features
Robust frame & reinforced overhead guard	Standard Features
Easy to access controller	Standard Features
Wide open battery hood cover	Standard Features
Tool-less side cover with air ventilation	Standard Features
Oil-cooled disc brakes (OCDB)	Standard Features
Drive/pump motors rated IP43 protection for water & debris	Standard Features

Standard Features

Options

\* Remark: Applies to B25X/  
B30X/B35X-7 models only

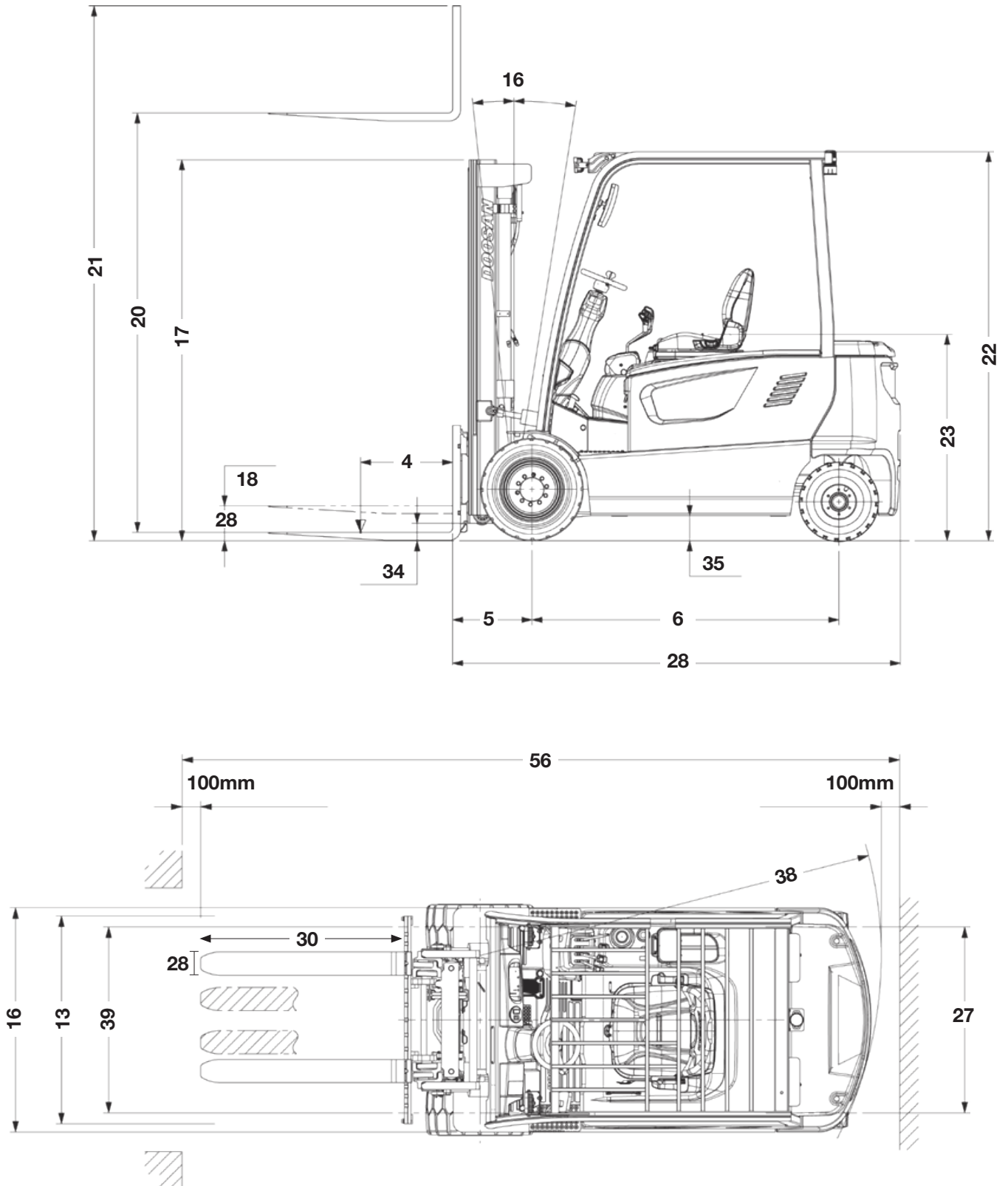
\*\* Remark: This list is based  
on factory data. Standard  
or optional features may  
vary by country.

# TECHNICAL DATA

		B25X-7		B30X-7	
CHARACTERISTICS	Drive: Electric (Battery)	1	AC Electric		
	Operator Type: Standing, Seated, Order-Picker	2	Seated		
	Load Capacity/Rated Load	3	5,000 lb. (2,268 kg)		6,000 lb. (2,722 kg)
	Load Center Distance	4	24 in. (600 mm)		
	Load Distance, Center of Drive Axle to Fork	5	17.6 in. (448 mm)		17.9 in. (454 mm)
	Wheelbase	6	62.6 in. (1,589 mm)		68.3 in. (1,734 mm)
WEIGHTS	Service Weight (w/Min. Weight of Battery)	7	10,192 lb. (4,623 kg)		11,173 lb. (5,068 kg)
	Axle Loading, Loaded Front/Rear	8	13,834 lb. (6,275 kg) / 1,870 lb. (848 kg)		15,867 lb. (7,197 kg) / 1,918 lb. (870 kg)
	Axle Loading, Unloaded Front/Rear	9	5,035 lb. (2,284 kg) / 5,157 lb. (2,339 kg)		5,615 lb. (2,547 kg) / 5,558 lb. (2,521 kg)
WHEELS AND TIRES	Tires: Pneumatic (P), Super-elastic (SE), Solid (E)	10	P, E		
	Tire Size, Front	11	23x10-12		
	Tire Size (Rear)	12	18x7-8		
	Wheels, Number Front/Rear (X=Drive Wheels)	13	2/2x		
	Tread Width (Front)	14	39.3 in. (998 mm)		
	Tread Width (Rear)	15	39.3 in. (998 mm)		
DIMENSIONS	Tilt of Mast/Fork Carriage (Forward/Backward)	16	6°/9°		
	Mast Lowered Height	17	85.0 in. (2,160 mm)		
	Free Lift	18	5.8 in. (147 mm)		6.0 in. (152 mm)
	Lift (w/ STD 2-Stage Mast)	19	127.2 in. (3,230 mm)		127.2 in. (3,230 mm)
	Max Fork Height	20	128.8 in. (3,272 mm)		129 in. (3,277 mm)
	Height, Mast Extended	21	176.4 in. (4,480 mm)		176.4 in. (4,480 mm)
	Height to Top of Overhead Guard	22	86.0 in. (2,185 mm)		87.0 in. (2,210 mm)
	Seat Height/Stand Height	23	42.1 in. (1,070 mm)		42.1 in. (1,070 mm)
	Towing Coupling Height	24	-		-
	Overall Length	25	133.1 in. (3,381 mm)		139 in. (3,531 mm)
	Length to Face of Forks	26	91.7 in. (2,329 mm)		97.6 in. (2,480 mm)
	Overall Width	27	49.0 in. (1,245 mm)		49.0 in. (1,245 mm)
	Fork Dimensions	28, 29, 30	1.6 x 3.9 x 41.3 in. (40 x 100 x 1,050 mm)		1.8 x 4.9 x 41.3 in. (45 x 125 x 1,050 mm)
	Fork Carriage ISO 2328	31	Class II		Class III
	Fork Carriage Width	32	-		-
	Fork Spacing (Min/Max)	33	10.7 x 40.8 in. (272 x 1,035 mm)		11.3 x 41.1 in. (286 x 1,040 mm)
	Ground Clearance, w/Load, Below Mast	34	5.1 in. (130 mm)		
	Ground Clearance, Center of Wheelbase	35	5.5 in. (140 mm)		
	Aisle Width for Pallets 40X48 Cross-ways	36	139.5 in. (3,543 mm)		145.5 in. (3,696 mm)
Aisle Width for Pallets 48x40 Length-ways	37	145.7 in. (3,701 mm)		151.7 in. (3,853 mm)	
Outer Turning Radius	38	76.8 in. (1,950 mm)		82.5 in. (2,095 mm)	
Inner Turning Radius	39	13.7 in. (348 mm)		13.4 in. (340 mm)	
PERFORMANCE	Travel Speed (Loaded/Unloaded)	40	9.9 mph (16 km/hr.) / 11.2 mph (18 km/hr.)		
	Lifting Speed (Loaded/Unloaded)	41	94.8 fpm (480 mm/s) / 118.2 fpm (600 mm/s)		82.8 fpm (420 mm/s) / 118.2 fpm (600 mm/s)
	Lowering Speed (Loaded/Unloaded)	42	96.6 fpm (490 mm/s) / 90.6 fpm (460 mm/s)		
	Max. Drawbar Pull (Loaded/Unloaded) 5 min. Rating	43	3,898 lbf. (17,339 N) / 3,693 lbf. (16,427 N)		
	Max. Gradeability (Loaded/Unloaded) 5 min. Rating	44	25 / 38%		22 / 34%
	Service Brake	45	HYD		
	Parking Brake	46	AUTO-ELECTRIC		
ELECTRIC	Drive Motor Rating S2 60 Minute	47	13 hp (10 kW) x 2		
	Lifting Motor Rating at S3 15%	48	28 hp (21 kW)		
	Battery As Per DIN 43531/35/36 A, B, C, Number	49	DIN 43536 A		
	Battery Voltage/Nominal Capacity K5	50	80V / 720 Ah		
	Battery Weight (Min)	51	3,439 lb. (1,560 kg)		4,127 lb. (1,872 kg)
	Battery Compartment L x W x H	52	28.3 x 40.5 x 31.5 in. (1,028 x 720 x 802 mm)		34.0 x 40.5 x 31.5 in. (1,028 x 863 x 802 mm)
OTHER	Type of Drive Control Unit	53	MOSFET Inverter		
	Working Pressure for Attachments	54	2,799.2 psi (193 bar) syst. 2,248.1 psi (155 bar) attach.		3,002.3 psi (207 bar) syst. 2,248.1 psi (155 bar) attach.
	Sound Level @ Driver's Ear According To EN12053	55	70 dB / (A)		
	Plunge Angle Stack	56			

B35X-7		B40X-7		B45X-7		B50X-7	
AC Electric							
Seated							
7,000 lb. (3,175 kg)		8,000 lb. (4,000 kg)		9,000 lb. (4,500 kg)		10,000 lb. (5,000 kg)	
24.0 in. (600 mm)				24.0 in. (600 mm)			
17.9 in. (454 mm)				22.5 in. (572 mm)			
68.9 in. (1,750 mm)				78.7 in. (2,000 mm)			
12,095 lb. (5,486 kg)		15,459 lb. (7,012 kg)		16,374 lb. (7,427 kg)		17,114 lb. (7,763 kg)	
17,505 lb. (7,940 kg) / 2,306 lb. (1,046 kg)		21,768 lb. (9,874 kg) / 2,509 lb. (1,138 kg)		23,384 lb. (10,607 kg) / 2,910 lb. (1,320 kg)		25,243 lb. (11,450 kg) / 2,893 lb. (1,312 kg)	
5,582 lb. (2,532 kg) / 6,513 lb. (2,954 kg)		8,223 lb. (3,730 kg) / 7,236 lb. (3,282 kg)		8,146 lb. (3,695 kg) / 8,228 lb. (3,732 kg)		8,311 lb. (3,770 kg) / 8,801 lb. (3,992 kg)	
P, E		SE					
23x10-12		250-15		28x12.5-15			
18x7-8		7.00-12		7.00-12			
2/2x							
39.3 in. (998 mm)		46.0 in. (1,168 mm)		45.7 in. (1,160 mm)			
39.3 in. (998 mm)		43.7 in. (1,111 mm)					
6°/9°							
85.0 in. (2,160 mm)		91.7 in. (3,170 mm)		92.1 in. (2,340 mm)			
6.0 in. (152 mm)		5.9 in. (150 mm)		6.3 in. (160 mm)			
118.0 in. (3,000 mm)		128 in. (3,250 mm)		128 in. (3,250 mm)			
120.1 in. (3,051 mm)		129.9 in. (3,300 mm)		129.9 in. (3,300 mm)			
167.3 in. (4,250 mm)		164.2 in. (4,170 mm)		164.6 in. (4,180 mm)		165.6 in. (4,205 mm)	
87.0 in. (2,210 mm)		92.3 in. (2,345 mm)		92.5 in. (2,350 mm)			
42.1 in. (1,070 mm)		51.1 in. (1,297 mm)		51.3 in. (1,303 mm)			
-		16.3 in. (415 mm)					
142.4 in. (3,617 mm)		157.8 in. (4,007 mm)		0.00 in. (0 mm)			
101.0 in. (2,564 mm)		116.4 in. (2,957 mm)		0.00 in. (0 mm)			
49.0 in. (1,245 mm)		57.9 in. (1,470 mm)		0.00 in. (0 mm)			
1.8 x 4.9 x 41.3 in. (45 x 125 x 1,050 mm)		2.0 x 5.9 x 41.3 in. (50 x 150 x 1,050 mm)					
Class III				Class IV			
-		49.2 in. (1,250 mm)					
11.3 x 41.1 in. (286 x 1,040 mm)		12.2 x 46.5 in. (310 x 1,182 mm)					
5.1 in. (130 mm)		4.7 in. (120 mm)		5.1 in. (130 mm)			
5.5 in. (140 mm)		6.3 in. (160 mm)					
147.8 in. (3,754 mm)		170.4 in. (4,328 mm)		171.3 in. (4,351 mm)			
154 in. (3,912 mm)		176.8 in. (4,491 mm)		177.7 in. (4,514 mm)			
84.8 in. (2,155 mm)		103.2 in. (2,620 mm)		104.1 in. (2,645 mm)			
13.4 in. (340 mm)		34.5 in. (877 mm)		34.6 in. (879 mm)			
9.9 mph (16 km/hr.) / 11.2 mph (18 km/hr.)		9.3 mph (15 km/hr.) / 9.9 mph (16 km/hr.)					
75.0 fpm (380 mm/s) / 118.2 fpm (600 mm/s)		68.9 fpm (350 mm/s) / 92.5 fpm (470 mm/s)		65.0 fpm (330 mm/s) / 92.5 fpm (470 mm/s)		61.0 fpm (310 mm/s) / 92.5 fpm (470 mm/s)	
98.4 fpm (500 mm/s) / 90.6 fpm (460 mm/s)		94.5 fpm (480 mm/s) / 88.6 fpm (450 mm/s)					
3,898 lbf. (17,339 N) / 3,693 lbf. (16,427)		4,186 lbf. (18,620 N) / 4,186 lbf. (18,620)					
20 / 31%		17% (9.6°) / 27% (15.1°)		16% (9.1°) / 26% (14.6°)		15% (8.5°) 25% (14.0°)	
HYD				FOOT/HYD			
AUTO-ELECTRIC				HAND/MECH			
13 hp (10 kW) x 2							
28 hp (21 kW)				28 hp (21 kW)			
DIN 43536 A							
80V / 720 Ah							
4,127 lb. (1,872 kg)		4,762 lb. (2,160 kg)					
34.0 x 40.5 x 31.5 in. (1,028 x 863 x 802 mm)		39.6 x 40.9 x 33.0 in. (1,007 x 1,040 x 804 mm)					
MOSFET Inverter				Inverter AC			
3408.4 psi (235 bar) syst. 2,248.1 psi (155 bar) attach.		2,756 psi (190 bar) syst. 2,248.1 psi (155 bar) attach.		3,046 psi (210 bar) syst. 2,248.1 psi (155 bar) attach.		3,336 psi (230 bar) syst. 2,248.1 psi (155 bar) attach.	
70 dB / (A)							

# DIMENSIONAL DRAWING





**YOU ARE  
ONE  
TOUGH  
ANIMAL.**

Everything we put into Bobcat® equipment is designed to make more of whatever you bring to the job. Whether it's strength, versatility, speed or agility, it's built around you.



Certain specification(s) are based on engineering calculations and are not actual measurements. Specification(s) are provided for comparison purposes only and are subject to change without notice. Specification(s) for your individual Bobcat equipment will vary based on normal variations in design, manufacturing, operating conditions, and other factors. Where applicable, dimensions are in accordance with ISO standards. Specifications and design are subject to change without notice. Pictures of Bobcat units may show other than standard equipment. All dimensions are given for material handling equipment with standard tires. All dimensions are shown in inches. Respective metric dimensions are enclosed by parentheses. Bobcat Company complies with the requirements of ISO9001 as registered with BSI.



Bobcat Company is a member of the Doosan Group. Doosan is a global leader in construction, grounds maintenance and material handling equipment, power and water solutions, and engineering that has proudly served customers and communities for more than a century. Bobcat®, the Bobcat logo and the colors of the Bobcat machine are registered trademarks of Bobcat Company in the United States and various other countries.

©2025 Bobcat Company. All rights reserved.

**DOOSAN**

**BOBCAT COMPANY • 250 EAST BEATON DRIVE • WEST FARGO, ND 58078 • BOBCAT.COM**

**B-3304 (04/25)**  
EP-M-0425-8333206154-E