

# TAFT GARDENS

GARD DRIVE & NORTH TAFT AVENUE. LOVELAND, CO

## Heather



\$644,900

3 bedroom . 2½ bathroom

1,986 Total Sq. Ft.

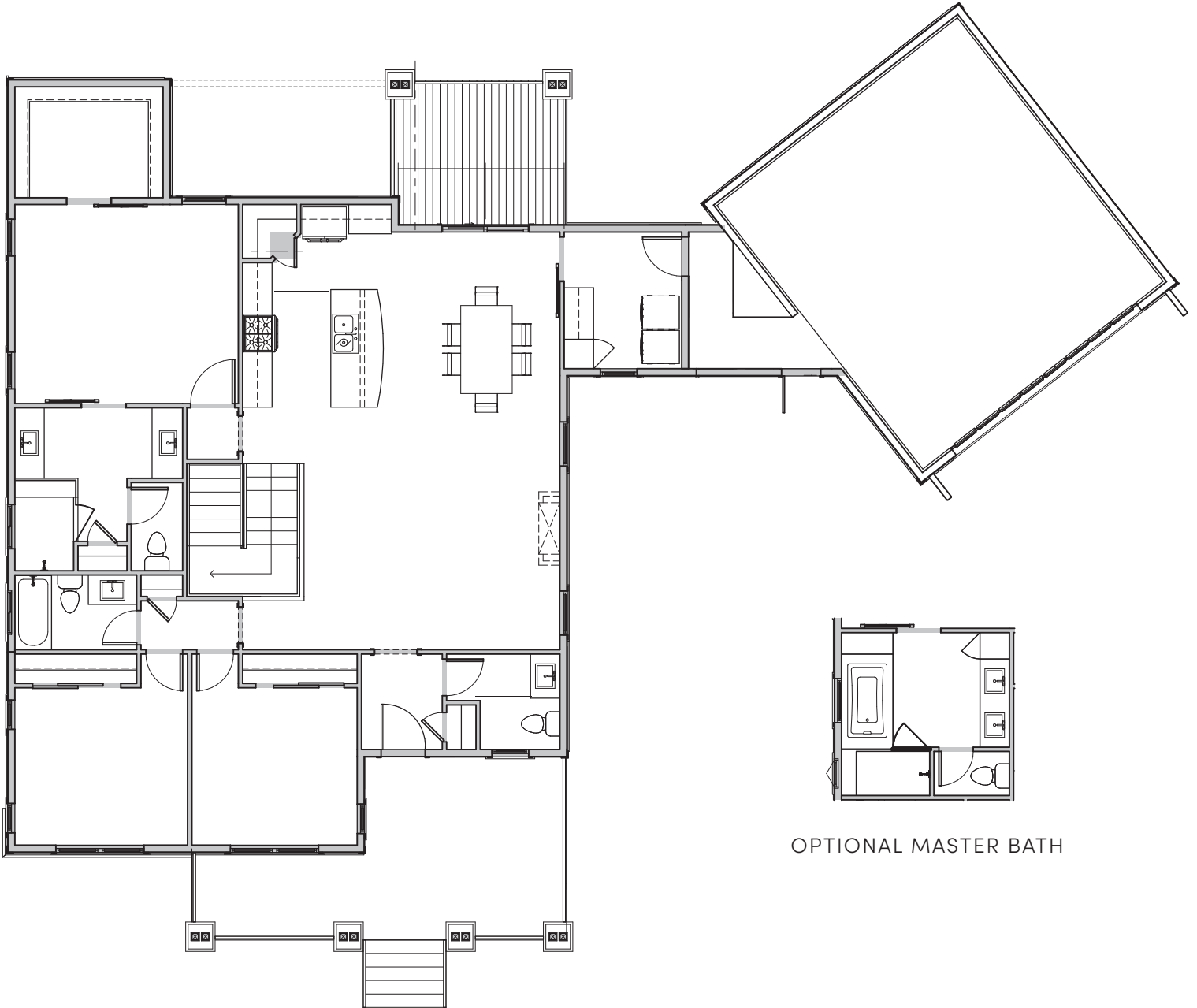
|                    |       |
|--------------------|-------|
| Main Floor Sq. Ft. | 1,753 |
| Basement Sq. Ft.   | 1,566 |
| Garage Sq. Ft.     | 587   |

- Modern Farmhouse With Exceptional Quality
- Low HOA Dues, Snow Removal Included
- No Metro District
- 24 Lot Community
- Close To Downtown Loveland & Major Thoroughfares

# TAFT GARDENS

GARD DRIVE & NORTH TAFT AVENUE. LOVELAND, CO

## Heather floor plan



OPTIONAL MASTER BATH



**FRED COOKE** REAL ESTATE BROKER

Cell: (970) 379-7696 • Office: (970) 667-1232

Email: [FGCooke@InsigniaHomesLTD.com](mailto:FGCooke@InsigniaHomesLTD.com)

[www.InsigniaHomesLTD.com](http://www.InsigniaHomesLTD.com)