

TAFT GARDENS

GARD DRIVE & NORTH TAFT AVENUE. LOVELAND, CO

Columbine



\$629,900

3 bedroom . 2½ bathroom

2,105 Total Sq. Ft.

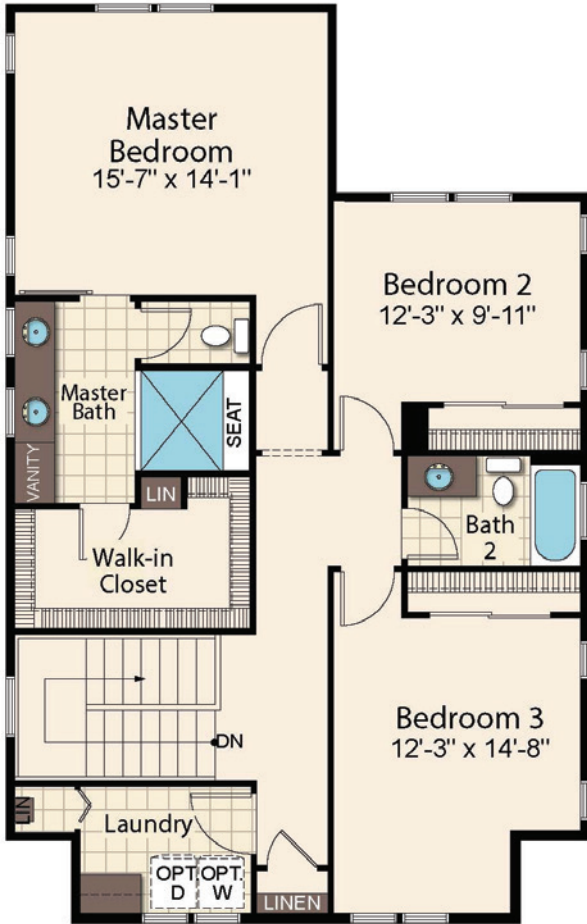
Main Floor Sq. Ft.	1,003
Second Floor Sq. Ft.	1,102
Basement Sq. Ft.	1,003
Garage Sq. Ft.	448

- Modern Farmhouse With Exceptional Quality
- Low HOA Dues, Snow Removal Included
- No Metro District
- 24 Lot Community
- Close To Downtown Loveland & Major Thoroughfares

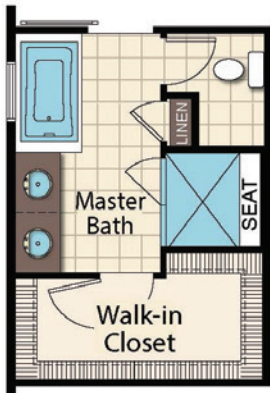
TAFT GARDENS

GARD DRIVE & NORTH TAFT AVENUE. LOVELAND, CO

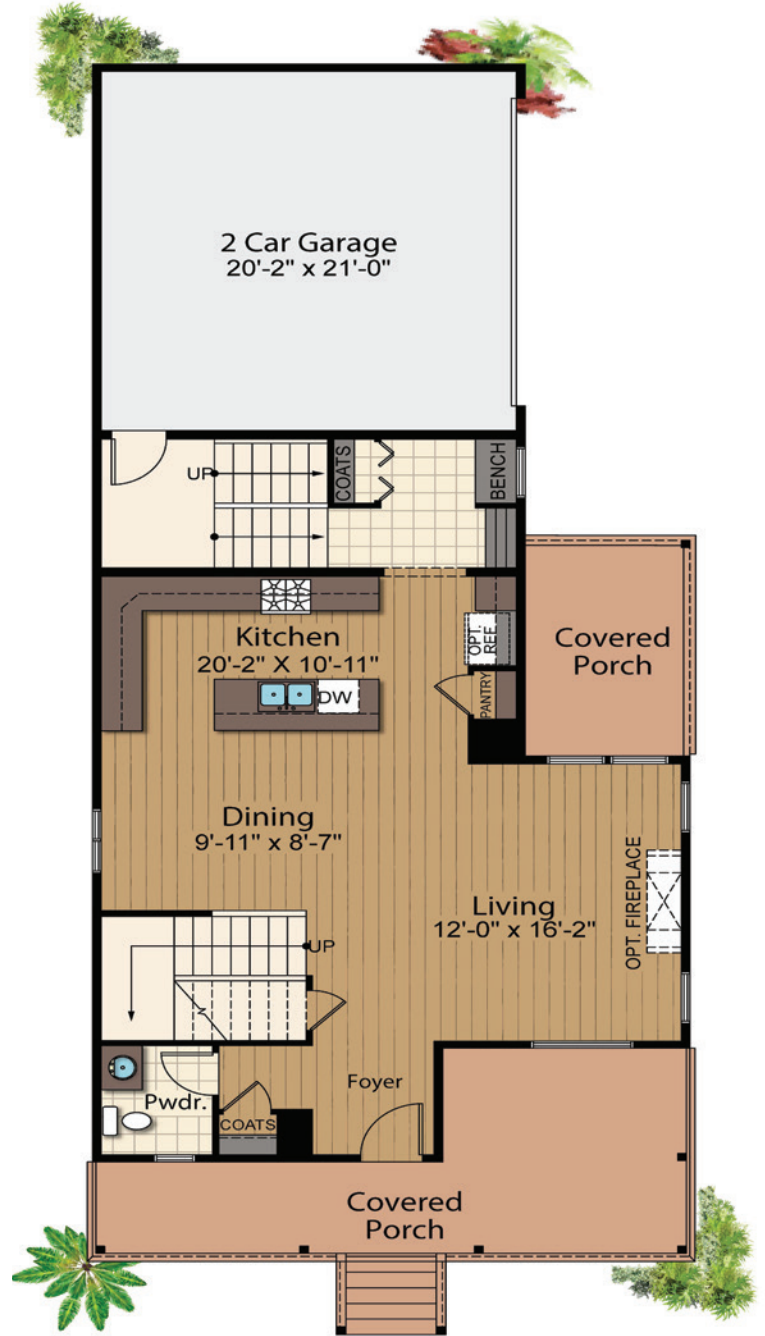
Columbine floor plan



SECOND STORY



OPTIONAL MASTER BATH



FRED COOKE REAL ESTATE BROKER
Cell: (970) 379-7696 • Office: (970) 667-1232
Email: FGCooke@InsigniaHomesLTD.com
www.InsigniaHomesLTD.com

*Renderings are conceptual representations of finishes/floorplans and are subject to change.