

# MARIGOLD MODEL

GARD DRIVE & NORTH TAFT AVENUE. LOVELAND, CO



## QUALITY NEW CONSTRUCTION HOMES AT TAFT GARDENS

- Modern Farmhouse Style Neighborhood
- Centrally Located - Close to Downtown Loveland
- Unique Subdivision in the Heart of Northern Colorado
- No Metro District
- Low HOA Dues



### THE DETAILS

**2,017**  
SQ FT

**3**  
BEDROOM

**2½**  
BATHROOM

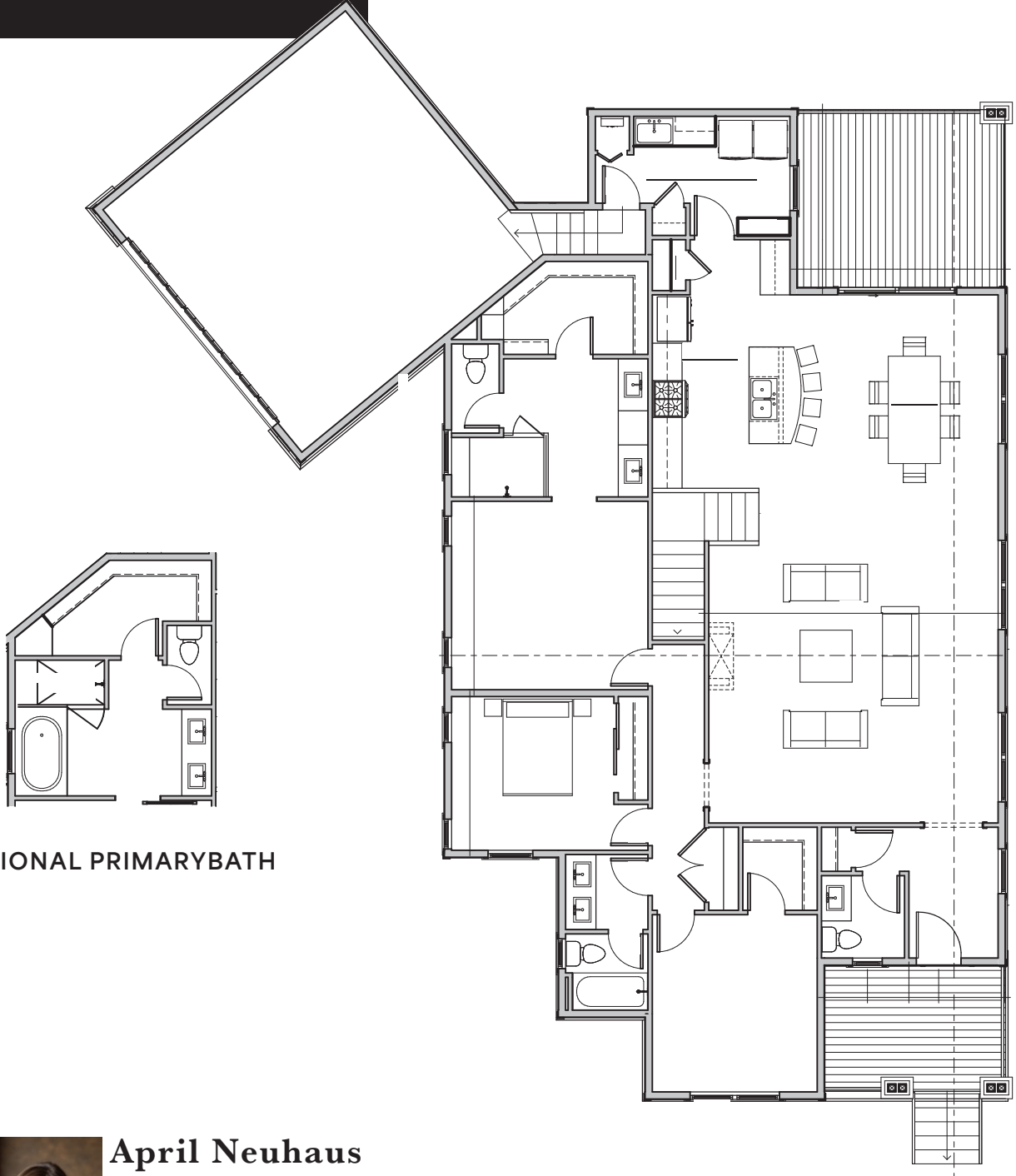


\*Renderings are conceptual representations of finishes/floorplans and are subject to change.

# MARIGOLD

MODEL FLOOR PLANS  
GARD DRIVE & NORTH TAFT AVENUE. LOVELAND, CO

Main Floor 2,017 Sq. Ft.  
Garage 513 Sq. Ft.



OPTIONAL PRIMARYBATH



**April Neuhaus**  
**Aubrie Larsen**

bhgreneuhaus@gmail.com

720.514.2400

**Better**  
**Homes**  
and Gardens  
REAL ESTATE

NEUHAUS

www.BHGRENeuhaus.com

