

HEATHER MODEL

GARD DRIVE & NORTH TAFT AVENUE. LOVELAND, CO



QUALITY NEW CONSTRUCTION HOMES AT TAFT GARDENS

- Modern Farmhouse Style Neighborhood
- Centrally Located - Close to Downtown Loveland
- Unique Subdivision in the Heart of Northern Colorado
- No Metro District
- Low HOA Dues



THE DETAILS

1,986
SQ FT

3
BEDROOM

2½
BATHROOM



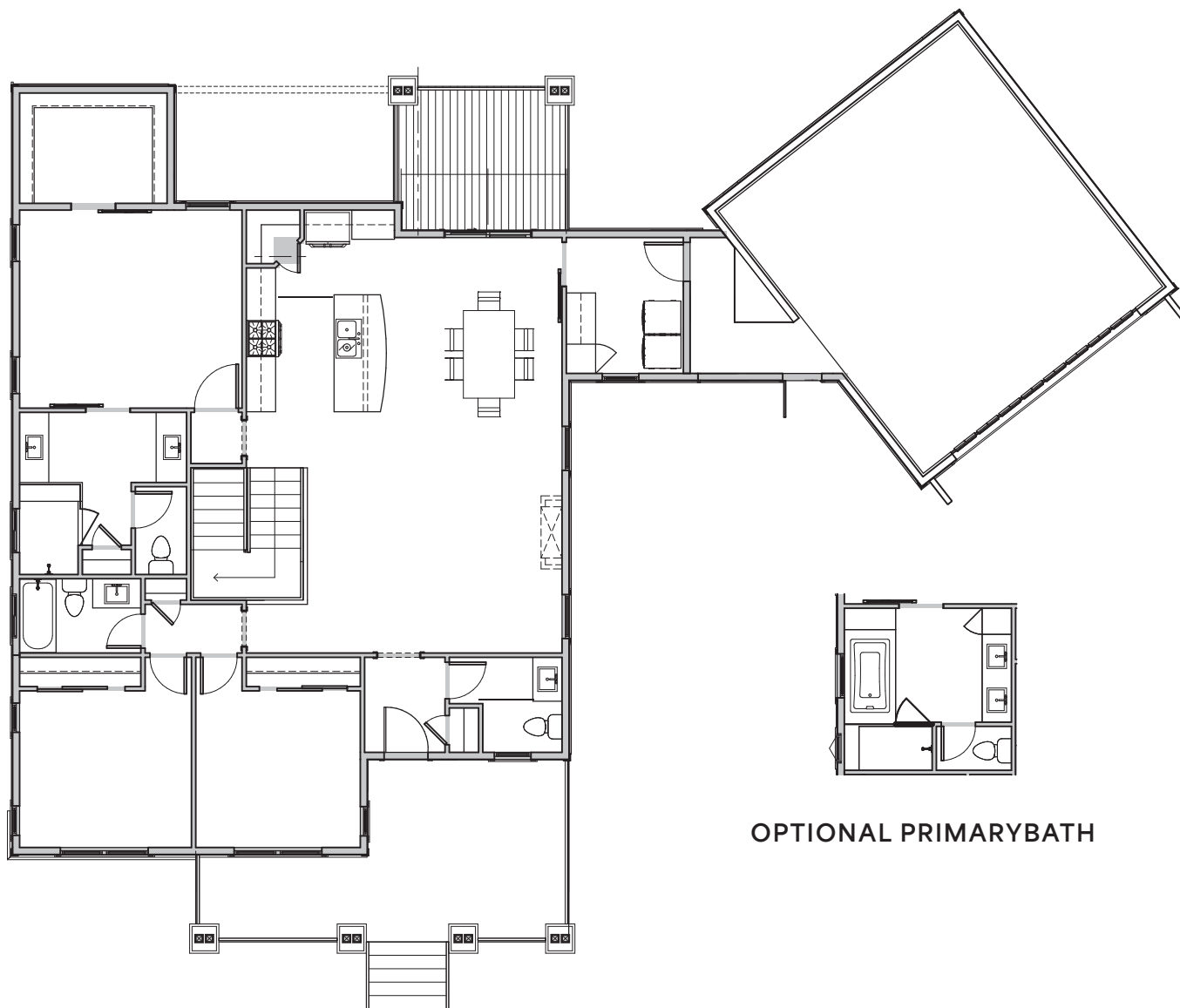
*Renderings are conceptual representations of finishes/floorplans and are subject to change.

HEATHER

MODEL FLOOR PLANS

GARD DRIVE & NORTH TAFT AVENUE. LOVELAND, CO

Main Floor 1,986 Sq. Ft.
Garage 587 Sq. Ft.



April Neuhaus
Aubrie Larsen

bhgreneuhaus@gmail.com

720.514.2400

Better
Homes
and Gardens
REAL ESTATE

NEUHAUS

www.BHGREneuhaus.com